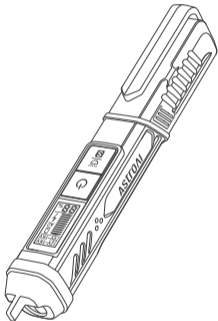


# Astromi



**VTS1000H**

## VOLTAGE TESTER USER MANUAL

## INTRODUCTION

Thank you for purchasing the AstroAI Voltage Tester.

It is a versatile circuit testing tool for non-contact voltage testing, live wire identifying and breakpoint finding. Also it features auxiliary functions such as dual-sensitivity range, audible and visual alarms, auto shut-off, low battery indication and built-in flashlight, and is designed to provide a convenient circuit inspection experience to electricians and homeowners. In addition, the tester equips a high-strength screwdriver at the tail for practical purpose.

Thank you again for choosing AstroAI, if you have any issues or concerns regarding your product, contact us via [support@astroai.com](mailto:support@astroai.com).



Please read this manual carefully before use and strictly observe the safety rules and cautions, notes, warnings, etc. listed in the user manual.

## WARNINGS

Observe the following rules to avoid possible electric shocks or personal injury:

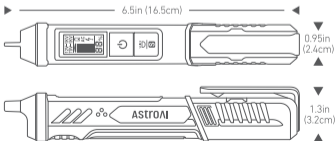
- If these instructions are not followed while using this tester, its protection function may be rendered ineffective.
- Do not use this device if its screen will not turn on.
- Before use, test the product on a known charged power source to ensure it works normally.
- During use, voltage may still be present even if there is no display or audible alarm. This tester indicates the effective voltage when a sufficiently strong electrostatic field is generated by a supply voltage. If the field intensity is weak, the tester cannot detect the presence of voltage. The presence of voltage can be affected by several factors including, but not limited to: shielded wire/cable, thickness and type of insulation, distance from the voltage source, fully insulated body, differences in outlet design, etc.
- Do not use the product if it is damaged or does not work properly. Before use, thoroughly check the tip of the probe for cracks or breaks. If you suspect a problem, please contact AstroAI customer support for maintenance.

- Do not apply more than the rated voltage marked on the tester.
- Exercise extreme caution when testing voltages above 30V AC, there are risks of electric shock with such voltages.
- Observe local and national safety standards and use appropriate protective equipment in accordance with local and national authorities.

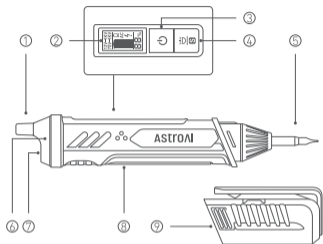
## PACKAGE INCLUDES

User Manual	× 1	Storage Bag	× 1
Voltage Tester	× 1	Batteries	× 2

## DIMENSIONS



## DIAGRAM



① Probe (NCV Sensor)

② Screen

③ Power Button

④ Sensitivity Switch/  
Flashlight Button

⑤ Screwdriver

⑥ Signal Indicator

⑦ Flashlight

⑧ Battery Cover

⑨ Screwdriver Cover

# AstroAI

Web: [www.astroai.com](http://www.astroai.com)

E-Mail: [support@astroai.com](mailto:support@astroai.com)

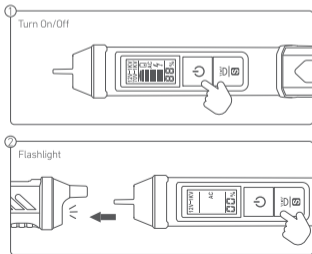
# INSTRUCTIONS

## Turn On/Off

Press and hold the Power Button to turn on the tester, the buzzer will beep once and the screen will illuminate- the tester is now ready for testing. Press the Power Button again to turn off the unit.

## Flashlight

Press and hold the Sensitivity Switch/Flashlight Button to turn on the flashlight. Press and hold it again to turn the light off. The light also will go off if there are no signal sensed or user input in 5 minutes.



## Switch Sensitivity Range

Load the battery to be tested and turn on the unit, it is set at low sensitivity testing range by default. When the battery is reloaded or depleted, the default low sensitivity range will be restored. Press the Sensitivity Switch/Flashlight Button to choose between high sensitivity and low sensitivity range.

### Note:

- High sensitivity range: 12V ~ 1KV;
- Low sensitivity range: 70V ~ 1KV.

## AC Voltage Testing

The signal indicator will illuminate and the backlight will turn red when the tester probe is close to the AC voltage source. The screen's analog bar, percentage value, and buzzer volume will increase as the sensed voltage signal becomes stronger. With a variety of indication methods, users can get more intuitive, accurate results.

The red backlight typically indicates the tested object is electrically charged.



## Notes:

1. Due to the varying structures of different sockets, the measured signal intensity may not be consistent across different outlets. Users can identify the live wire and neutral wire according to the signal percentage value. The bigger number indicates the live wire and the smaller one indicates the neutral wire.
2. Identify the live wire and neutral wire: If the two wires are very close, separate them to test each one; if they are inseparable, distinguish them by the signal intensity analog bar: more bars indicate strong signal and the live wire and less bars indicate weak signal and the neutral wire.

## Auto Shutoff

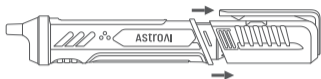
The tester will automatically turn off if there are no detected signals or user input in 5 minutes; this is to prolong the battery life.

## Low Battery Indication

When the battery power is low, the screen will display the "🔋" symbol. When it drops below 2.3V the unit will turn off automatically. Please promptly replace the battery when the low battery indicator appears.

## Use the Screwdriver

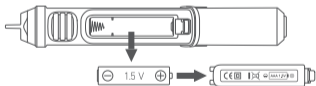
Remove the screwdriver cover to use the screwdriver and put the cover back when finished using.



## MAINTENANCE

### Battery Replacement

Open the battery cover as instructed in the following picture and take out the old battery. Load a new one in, paying special attention to the polarities.



### Caution

To avoid electric shock, do not use the unit to test voltage before you replace the back and secure the battery cover.

## Cleaning

Use a damp cloth to clean the product.

### Note:

After cleaning, do not use the tester immediately, wait until it is fully dry.

## SPECIFICATIONS

**Operating Voltage:** AC Voltage 12 ~ 1000V, 50/60Hz

**Operating Temperature:** 32 ~ 104°F (0 ~ 40°C)

**Storage Temperature:** 14.0 ~ 122.0°F (-10 ~ 50°C)

**Humidity:** ≤95%

**Altitude:** ≤6562ft (2000m)

**Safety Class:** CAT.II 1000V; CAT.IV 600V

**Battery:** 1 × 1.5V AAA

**Drop Protection:** 6.6ft (2m)

## RECYCLING

You may dispose of this product when its service life has ended, please recycle the recyclable parts according to local guidelines.

## WARRANTY PERIOD

### 3-Year Limited Warranty from AstroAI

Each AstroAI Voltage Tester will be free from defects in material and workmanship.

This warranty does not cover disposable batteries and damages caused by negligence, misuse, contamination, alteration, accidents, or abnormal conditions of operation.

This warranty only covers the original purchaser and cannot be transferred.

If the product is found to be defective, contact our customer support via [support@astroai.com](mailto:support@astroai.com).