



Questions, problems, missing parts?

For customer service support and the fastest response, please email us at dorothyewcc@hotmail.com or visit our website www.ewccusa.com

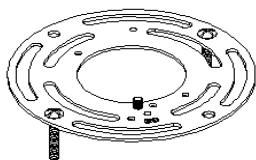
Before returning to your retailer, call our customer service at 1-888-722-5089

PACKAGE CONTENTS



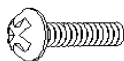
HARDWARE AND PART CONTENTS Note: Hardware not shown actual size.

A



Mounting Bracket x 1

B



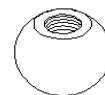
Mounting Screws x 2

C



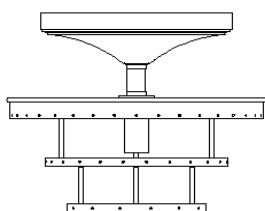
Wire Nuts x 3

D



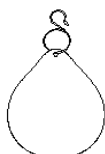
Ball Nuts x 2

E



Lamp Body x 1

F



Crystal Drop x 35+1

G



Crystal Drop x 35+1

⚠ SAFETY INFORMATION

Please read and understand this entire manual before attempting to assemble, operate or install the product.

WARNING

Turn off electricity at main fuse box (or circuit breaker box) before beginning installation by removing fuse (or switching off circuit breaker).

Be careful not to damage or cut the wire insulation (covering) during fixture installation. Do not permit wires to contact any surface having a sharp edge. To do so may damage or cut the wire insulation, which could cause serious injury or death from electric shock.

CAUTION

All electrical connections must be in agreement with local codes, ordinances or the national electric code (NEC). Contact your municipal building department to learn about your local codes, permits and or inspections.

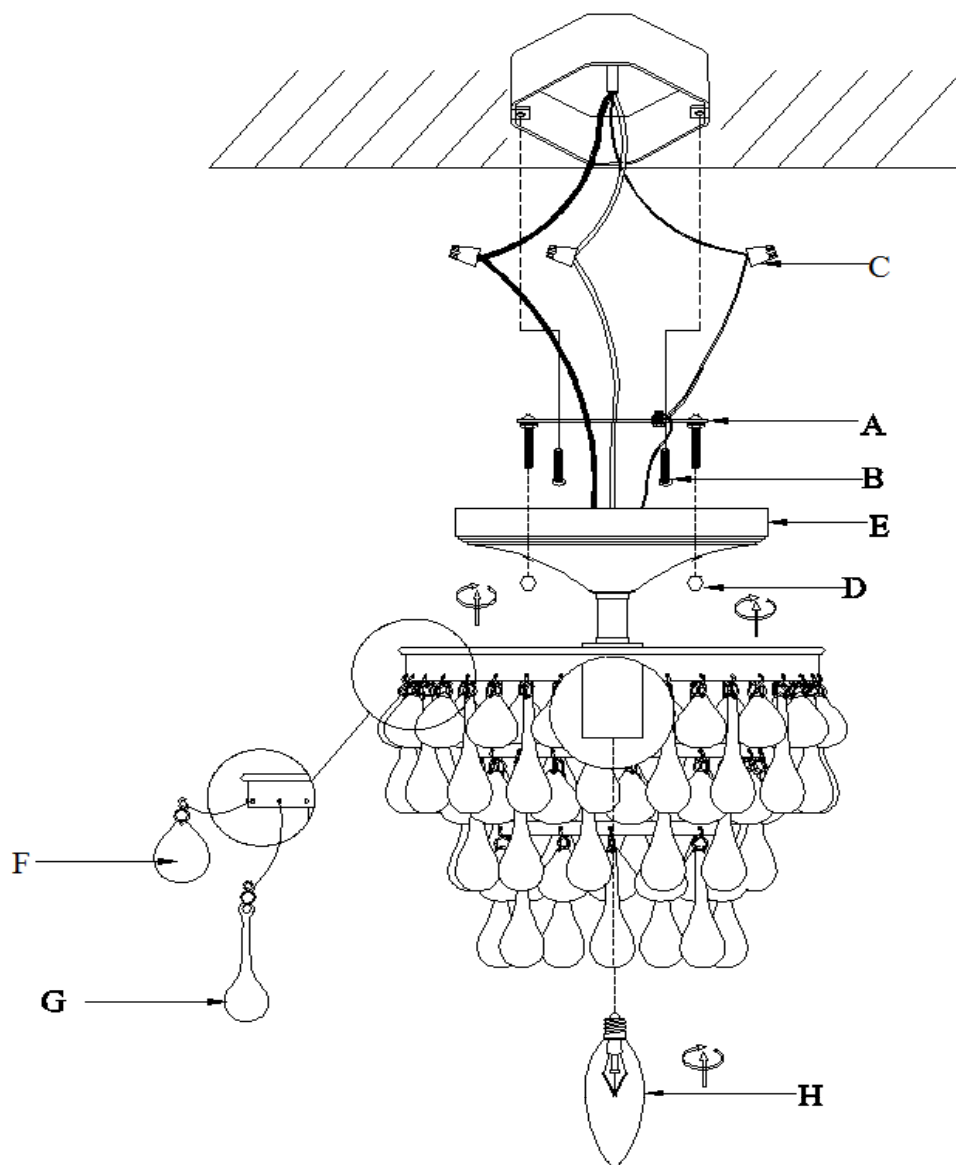
Do not connect this fixture to an electrical system that does not provide a means for equipment grounding. Never use a fixture in a two-wire system that is not grounded. If you are not sure your lighting system has a grounding means, do not attempt to install this fixture. Contact a qualified, licensed electrician for information with regards to proper grounding methods as required by the local electrical code in your area.

PREPARATION

Before beginning assembly, installation or operation of the product, make sure all parts are present. If any part is missing or damaged, do not attempt to assemble, install or operate the product. Contact customer service for replacement parts.

Tools Required for Assembly (not included): Screwdriver, Phillips Screwdriver, Pliers, Electrical Tape, Wire Cutters, safety Glasses, Ladder, Wire Stripper.

ASSEMBLY INSTRUCTIONS



Turn off the power at fuse or circuit box.

Step 1: Unscrew (2) Ball Nuts (D) from the Lamp Body (E) and take the Mounting Bracket (A) off.

Step 2: Mount the Mounting Bracket (A) to outlet box using Mounting Screws (B).
Make sure the screws on the Mounting Bracket (A) are facing out from the outlet box.

Step 3: Wrap the ground wire from the fixture around the ground screw on the Mounting Bracket (A), then connect to the ground wire from the outlet box with a Wire Nut(C).

Connect the black wire from the fixture to the black wire from the outlet box with a Wire Nut (C).

Connect the white wire from the fixture to the white wire from outlet box with a Wire Nut (C).

Note: Wrap the Wire Nuts (C) with electrical tape for a more secure connection.

Carefully tuck wires and Wire Nuts (C) into the outlet box

Step 4: Position the fixture over screws on Mounting Bracket (A) and secure fixture in place with Ball Nuts (D)

Step5: Insert the Crystal Drop (F) and Crystal Drop (G) alternately into the 3 layers of the frame as diagram. Make sure two drops should be alternately aligned in each layer. And the beginning drop of the bottom layer should be different from the one above the layer.

Step 6: Install the Bulb (H)(Bulb is not included) into the Socket. Be sure to use Bulb(H) with wattage no greater than specified on this fixture. Make sure that electrical current is turned off before changing bulbs.

CARE AND MAINTENANCE

- Use a dry soft cloth to dust the surface.
- Do not clean with abrasive materials, bleach, or solvents.

TROUBLESHOOTING

Problem: The light does not come on at all.

- a) Ensure the power supply is turned on.
- b) Verify that bulb is installed correctly.
- c) Ensure the circuit breaker is set in the "ON" position.

FIVE-YEAR LIMITED WARRANTY: If, during normal use, this PATRIOT LIGHTING® lighting fixture breaks or fails due to a defect in material and workmanship within five (5) years from the date of original purchase, simply bring this lighting fixture with the original sales receipt back to your nearest MENARDS® retail store. At its discretion, PATRIOT LIGHTING® agrees to have the product or any defective part(s) repaired or replaced with the same or similar PATRIOT LIGHTING® product or part free of charge, within the stated warranty period, when returned by the original purchaser with original sales receipt. This warranty; (1) excludes expendable parts including but not limited to light bulbs; (2) does not cover damage that has resulted from abuse or misuse; and (3) does not cover any losses, labor, injuries to persons/property or costs. This warranty does give you specific legal rights and you may have other rights, which vary from state to state.