

**DRAPER**<sup>®</sup>

RECHARGEABLE  
**HEAD LAMP**  
WITH ACTION SENSOR  
54374



These instructions accompanying the product are the original instructions. This document is part of the product, keep it for the life of the product passing it on to any subsequent holder of the product. Read all these instructions before assembling, operating or maintaining this product.

This manual has been compiled by Draper Tools describing the purpose for which the product has been designed, and contains all the necessary information to ensure its correct and safe use. By following all the general safety instructions contained in this manual, it will ensure both product and operator safety, together with longer life of the product itself.

All photographs and drawings in this manual are supplied by Draper Tools to help illustrate the operation of the product.

Whilst every effort has been made to ensure the accuracy of information contained in this manual, the Draper Tools policy of continuous improvement determines the right to make modifications without prior warning.

# 1. TITLE PAGE

---

## 1.1 INTRODUCTION:

USER MANUAL FOR: Rechargeable Head Lamp with Action Sensor

**Stock No:** 54374

**Part No:** RHL3

## 1.2 REVISIONS:

**Date first published June 2018.**

---

---

---

---

As our user manuals are continually updated, users should make sure that they use the very latest version.

**Downloads are available from:** <http://drapertools.com/manuals>

Draper Tools Limited

Hursley Road

Chandler's Ford

Eastleigh

Hampshire

SO53 1YF

UK

**Website:** [drapertools.com](http://drapertools.com)

**Product Helpline:** +44 (0) 23 8049 4344

**General Fax:** +44 (0) 23 8026 0784

## 1.3 UNDERSTANDING THIS MANUALS SAFETY CONTENT:

**WARNING!** – Information that draws attention to the risk of injury or death.

**CAUTION!** – Information that draws attention to the risk of damage to the product or surroundings.

## 1.4 COPYRIGHT © NOTICE:

Copyright © Draper Tools Limited.

Permission is granted to reproduce this publication for personal and educational use only. Commercial copying, redistribution, hiring or lending is prohibited.

No part of this publication may be stored in a retrieval system or transmitted in any other form or means without written permission from Draper Tools Limited.

In all cases this copyright notice must remain intact.

---

## 2. WARRANTY

---

### 2.1 WARRANTY

Draper tools have been carefully tested and inspected before shipment and are guaranteed to be free from defective materials and workmanship.

Should the tool develop a fault, please return the complete tool to your nearest distributor or contact:

**Draper Tools Limited, Chandler's Ford, Eastleigh, Hampshire, SO53 1YF. England.**

**Telephone Sales Desk: (023) 8049 4333 or:**

**Product Helpline (023) 8049 4344.**

A proof of purchase must be provided.

If upon inspection it is found that the fault occurring is due to defective materials or workmanship, repairs will be carried out free of charge. This warranty period covering labour is 12 months from the date of purchase except where tools are hired out when the warranty period is 90 days from the date of purchase. The warranty is extended to 24 months from the date of purchase for parts only. This warranty does not apply to any consumable parts, any type of battery or normal wear and tear, nor does it cover any damage caused by misuse, careless or unsafe handling, alterations, accidents, or repairs attempted or made by any personnel other than the authorised Draper warranty repair agent.

Note: If the tool is found not to be within the terms of warranty, repairs and carriage charges will be quoted and made accordingly.

This warranty applies in lieu of any other warranty expressed or implied and variations of its terms are not authorised.

Your Draper warranty is not effective unless you can produce upon request a dated receipt or invoice to verify your proof of purchase within the warranty period.

Please note that this warranty is an additional benefit and does not affect your statutory rights.

**Draper Tools Limited.**

## 3. INTRODUCTION

---

### 3.1 SCOPE

Head lamp activated by either pressing a button on the unit or by swiping your hand over the action sensor. Supplied with rechargeable Li-Ion battery, USB charging cable.

As part of our core range, this product is suitable for enthusiasts and tradespeople alike. Any application other than that it was intended for, is considered misuse.

### 3.2 SPECIFICATION

Stock No's .....	54374
Part No's .....	RHL3
LED .....	3W
LED temperature .....	6500K
Lumens output	
High .....	300
Low .....	100
Beam distance.....	20M
Battery:	
Type .....	Li-Ion
Rated voltage.....	3.7V
Rating .....	1.5Ah
Charging time.....	3hrs
Continuous head lamp operating time (on one full charge):	
High .....	2hrs
Low .....	6hrs

## 3. INTRODUCTION

### 3.3 HANDLING AND STORAGE

Store in a dry location out of the reach of children.

## 4. HEALTH AND SAFETY INFORMATION

### 4.1 HEAD LAMP SAFETY INFORMATION

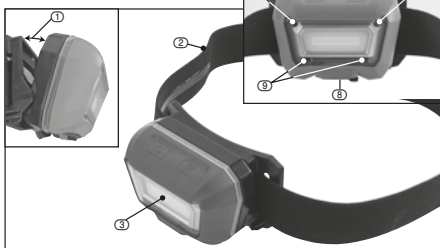
- Do not point (shine) the light into any persons or animals eyes.
- Do not use near children.
- Store out of the reach of children.
- Do not put this unit into a fire or use near any flammable object.
- Do not use in explosive atmospheres or environments.
- Do not use excessive force as it can permanently damage the head lamp.
- Only use the USB charging cable in a standard environment.
- Do not use the USB charging cable to charge any other product and only use the supplied USB charging cable to charge this head lamp.

### 4.2 CONNECTION TO THE POWER SUPPLY (CHARGER)

This head lamp is used in conjunction with a UK standard 3 pin charger. It is designed for connection to a domestic power supply rated at 230V AC. If an extension lead is required, use an approved and compatible lead rated for this appliance. Follow all the instructions supplied with the extension lead. This product requires no earth connection as supplementary insulation is applied to the basic insulation to protect against electric shock in the event of failure of the basic insulation.

## 5. IDENTIFICATION

### 5.1 TECHNICAL IDENTIFICATION



- ① Angle adjustment.
- ② Elasticated strap.
- ③ 3 Watt COB LED.
- ④ Charging indicator LED.
- ⑤ 3 Stage ON/OFF switch.
- ⑥ Action sensor switch.
- ⑦ Sensor.
- ⑧ Micro USB charging port.
- ⑨ Action sensors.

## 6. UNPACKING AND CHECKING

### 6.1 WHAT'S IN THE BLISTER?

As well as the head lamp; there are parts not fitted or attached to it.



- ⑩ USB charging cable

## 7. OPERATION AND USE

### 7.1 CHARGING – FIG. 1

FIG.1

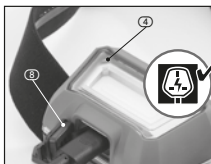


Before using the head lamp, charge the battery fully.



The table below highlights the approximate hours of continuous usage available when fully charged:

High:	2 hours
Low:	6 hours



As the charge diminishes, the light intensity will begin to reduce. The battery should be recharged before it is drained completely.

- Before charging, ensure head lamp is OFF.
- Insert the USB cable (⑩) into a 230V USB power adaptor and the micro USB connect into the head lamp (⑧) and turn on the charger.
- The head lamp's LED indicator (④) light will illuminate RED.
- Charge the unit for 3 hours, when light changes to GREEN the lamp is fully charged, then disconnect from the power supply.

**Note:** Do not completely discharge the battery before recharging.

## 7. OPERATION AND USE

**Note:** if stored for emergencies, ensure it is fully charged and recharge every three months regardless of use.

- Lithium-ion cells prefer small charges often.
- Lithium-ion technology is lightweight and compact due to increased capacity in comparison to other battery chemistries.
- Lithium-ion cells have no 'memory effect' and a long cycle life with outstanding discharge performance.
- Lithium-ion cells suffer from a loss in capacity or thermal runaway if over charged and will degrade if allowed to enter deep discharge, however all of these situations are negated due to the complex circuitry incorporated within this product.
- Charging must be carried out in an environment with an ambient air temperature between 5°C to 45°C with the transformer supplied.
- To prevent overheating, do not cover the transformer.

**Warning!** If the cable is damaged or the non-self resetting protective device is activated due to short circuit/overload, the transformer shall be scrapped. A replacement of identical specification, design and application shall be obtained.

### 7.2 HEAD LAMP OPERATION – FIG. 2

The head lamp is operated via the ON/OFF/ beam setting switch (5).

- 1 Press once for the one third power beam.
- 2 Press twice for full powered beam.
- 3 Press again to switch off the head lamp.

**Warning!** This head lamp is extremely bright. Do not shine directly into any person's or animal's eyes.

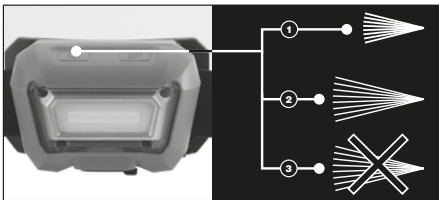


FIG.2

### 7.3 ACTION SENSOR OPERATION – FIG. 3

- 1 Press (6). The action sensor is active. Motion within 10cm of the head lamp will turn the light ON / OFF.
- 2 Press (6). The action sensor is deactivated.

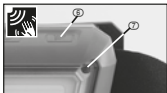


FIG.3

## 8. MAINTENANCE


### 8.1 MAINTENANCE


Use only mild soap and damp cloth to clean this head lamp. Do not submerge into liquid.


## 9. EXPLANATION OF SYMBOLS

### 9.1 EXPLANATION OF SYMBOLS

 **WEEE**  
Do not dispose of Waste Electrical & Electronic Equipment in with domestic rubbish.


 **Li-ion**  
Lithium-ion product.  
Refer to your local authority for advice on disposal and recycling.

 **Indoor use only.**  
Do not expose to rain.


 **F**  
Short-circuit-proof safety isolating transformer.

 Polarity indication.

 Rated voltage.

 Do not incinerate or throw onto fire.

 **Warning!** Read the instruction manual.

 **Warning!** Do not aim beam at bystanders or look directly into light source.

 230V charger adaptor

## 10. DISPOSAL

### 10.1 DISPOSAL

At the end of the machine's working life, or when it can no longer be repaired, ensure that it is disposed of according to national regulations.

Contact your local authority for details of collection schemes in your area.

In all circumstances:

- Do not dispose of power tools with domestic waste.
- Do not incinerate.
- Do not abandon in the environment.
- Do not dispose of WEEE\* as unsorted municipal waste.



### 10.2 HEALTH AND SAFETY FOR BATTERIES

**Warning!** Do not put in fire or mutilate – cells may burst or release toxic materials.

- Do not short circuit cells, may cause burns.
- The battery must be removed from the appliance before it is scrapped.
- The battery is to be disposed of safely.
- Do not mutilate batteries, corrosive electrolyte will be released.
- Do not incinerate – danger of explosion and release of toxic fumes.
- Do not dispose of batteries or cells in a charged condition.

Expired lithium-ion batteries must be recycled/disposed of in accordance with the appropriate regulation or legislation. They should be returned to your local warranty agent/stockist.

## CONTACT US

Draper Tools Limited, Hursley Road,  
Chandler's Ford, Eastleigh, Hampshire. SO53 1YF. U.K.

Helpline: (023) 8049 4344

Sales Desk: (023) 8049 4333

Internet: [drapertools.com](http://drapertools.com)

E-mail: [sales@drapertools.com](mailto:sales@drapertools.com)

General Enquiries: (023) 8026 6355

Service/Warranty Repair Agent:

For aftersales servicing or warranty repairs, please contact the  
Draper Tools Helpline for details of an agent in your local area.

YOUR DRAPER STOCKIST

RWMC0718

©Published by Draper Tools Limited.

No part of this publication may be reproduced, stored in a retrieval system or transmitted in any form or by any means, electronic, mechanical photocopying, recording or otherwise without prior permission in writing from Draper Tools Ltd.