

APP



Google Play and the Google Play logo are trademarks of Google Inc.



Apple and the Apple logo are trademarks of Apple Inc.

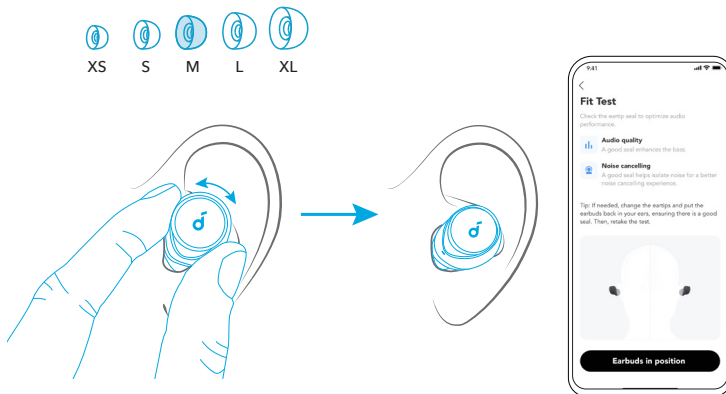


Download the soundcore app to enhance your experience (3D Surround Sound, Ambient Sound modes, adaptive noise control, HearID Sound, equalizer tuning, custom controls, firmware update, and more).

Click this link to download: <http://dl-soundcore.soundcore.com/qcdl?flow=soundcore>

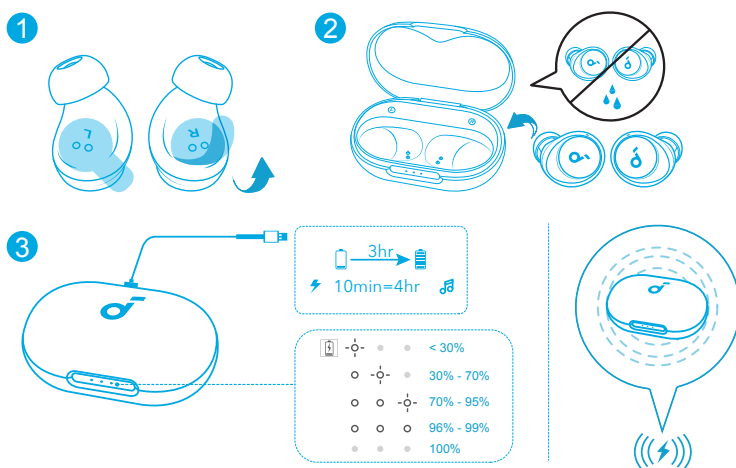
If your earbuds cannot connect with the soundcore app, update it to the latest version in your mobile app store.

WEARING



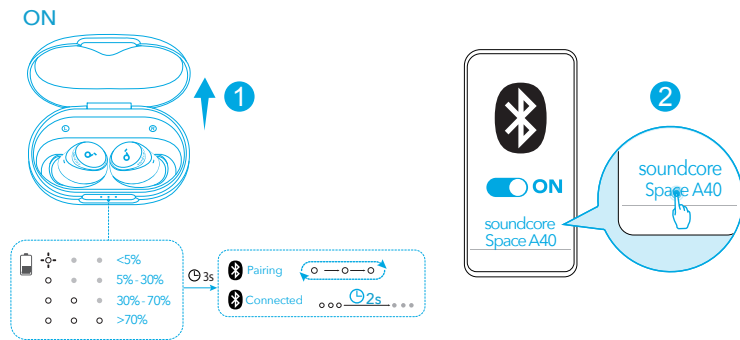
Choose the Ear Tips that fit your ears best and take a fit test in the soundcore app to ensure you get the best ANC performance.

CHARGING



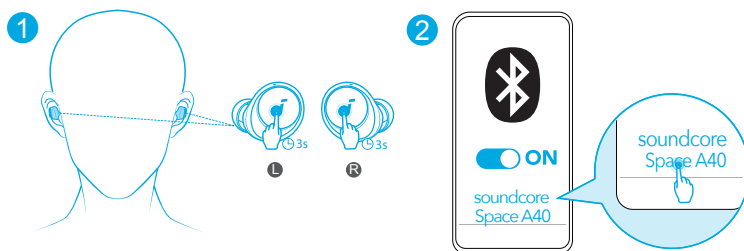
1. Tear off the insulation sticker on the earbuds before first use.
2. Place the earbuds in the charging case and close it.
 - Fully dry off the earbuds and the USB-C charging port before charging.
3. Connect the charging case to the power supply by using a certified USB-C charging cable. Alternatively, position the charging case at the center of your wireless charger for wireless charging.
 - Fully charge both the earbuds and the charging case before the first use. When they are fully charged, the LED indicators will turn off.

POWERING ON AND PAIRING



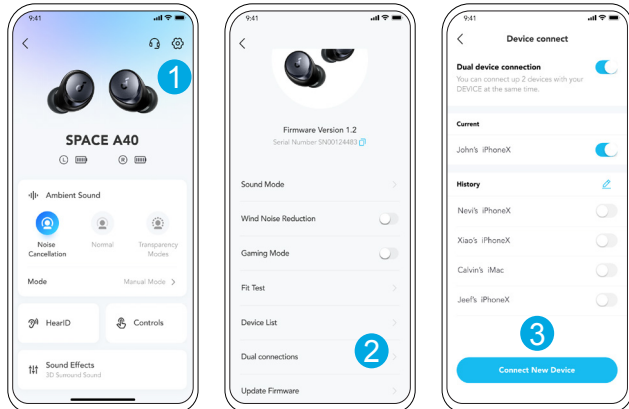
Open the charging case, the earbuds will automatically power on and enter Bluetooth pairing mode. Select "**soundcore Space A40**" from your device's Bluetooth list when connecting for the first time.

MULTIPOINT CONNECTION



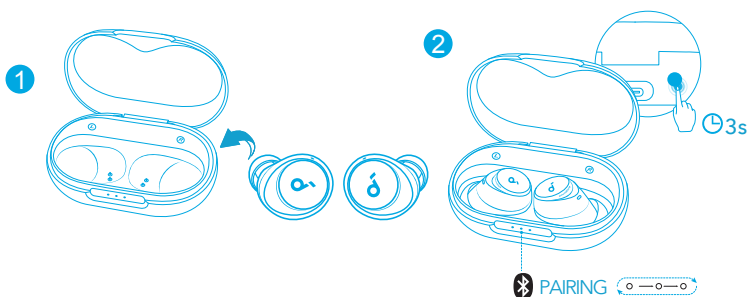
The earbuds can connect with two devices at the same time so you can switch between them effortlessly. Wear the earbuds, then press and hold the touchpad on both earbuds for 3 seconds simultaneously.

Select "**soundcore Space A40**" from your device's Bluetooth list to connect.



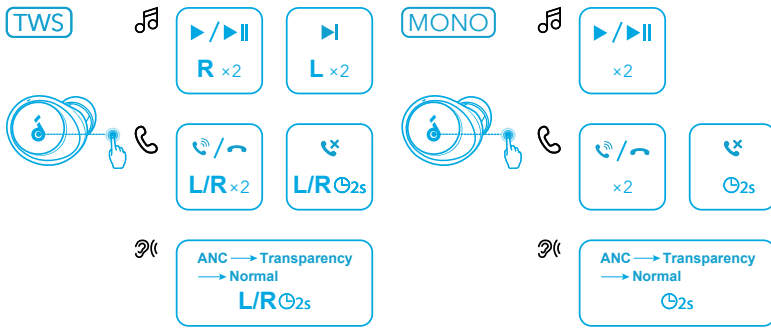
In the soundcore app, go to settings and select **Dual Connections > Connect New Device**.

MANUAL PAIRING



To manually enter Bluetooth pairing mode, place the earbuds in the charging case and leave the case open, then press and hold the button on the charging case for 3 seconds until the LED indicators flash white in sequence continuously.

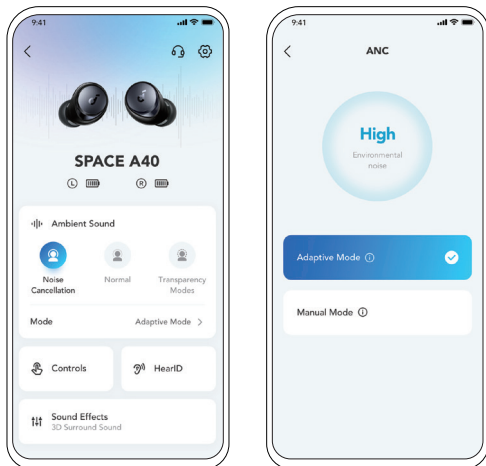
CONTROLS



x2: Tap twice 2s: Tap and hold for 2 seconds
 * You can also customize controls in the soundcore app.

		TWS mode	Mono mode
🎵	Play / Pause	Tap twice (R)	Tap twice
	Next track	Tap twice (L)	/
☎️	Answer / End a call	Tap twice (L/R)	Tap twice
	Reject a call	Tap and hold for 2 seconds (L/R)	Tap and hold for 2 seconds
🔊	Switch ambient sound modes (ANC / Transparency / Normal)	Tap and hold for 2 seconds (L/R)	Tap and hold for 2 seconds

NOISE CANCELLATION

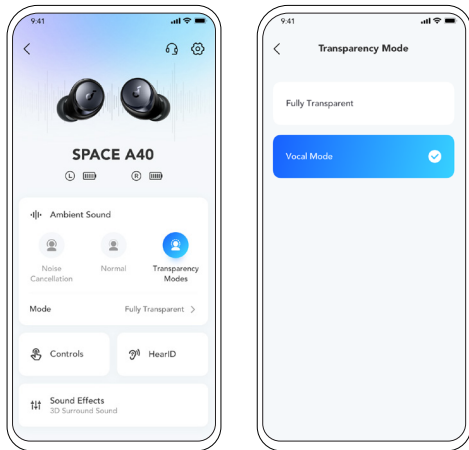


To reduce unwanted ambient noise, select a noise cancellation mode in the soundcore app.

- **Adaptive Mode:** Automatically switch to the most suitable noise cancelling equalizer for different user scenarios.
- **Manual Mode:** Set the level of noise cancellation manually.

Based on the SGS Lab testing result, the deepest band of noise reduction is up to 38dB, and the comprehensive noise reduction is up to 23dB. Key word of "Reduces Noise By Up to 98%*"

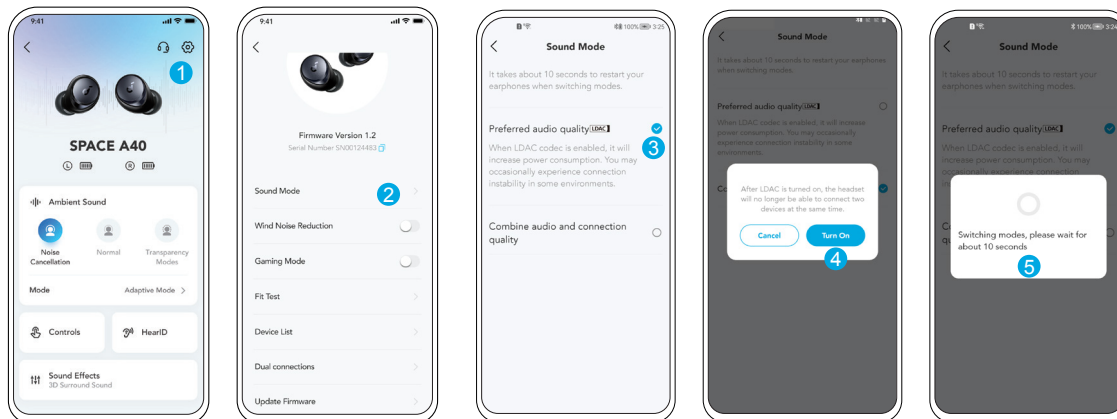
TRANSPARENCY



To stay aware of your surroundings while listening to music, select a transparency mode in the soundcore app.

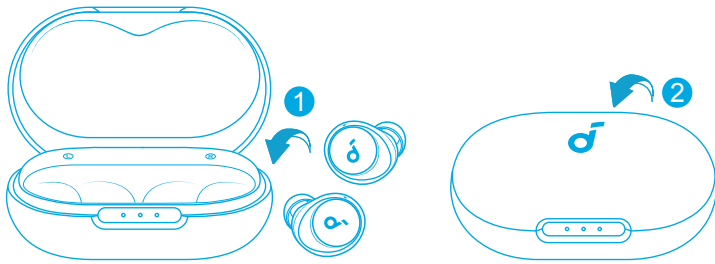
- **Fully Transparent:** Hear all ambient sounds.
- **Vocal Mode:** Voices stand out more clearly from other ambient sounds.

LDAC



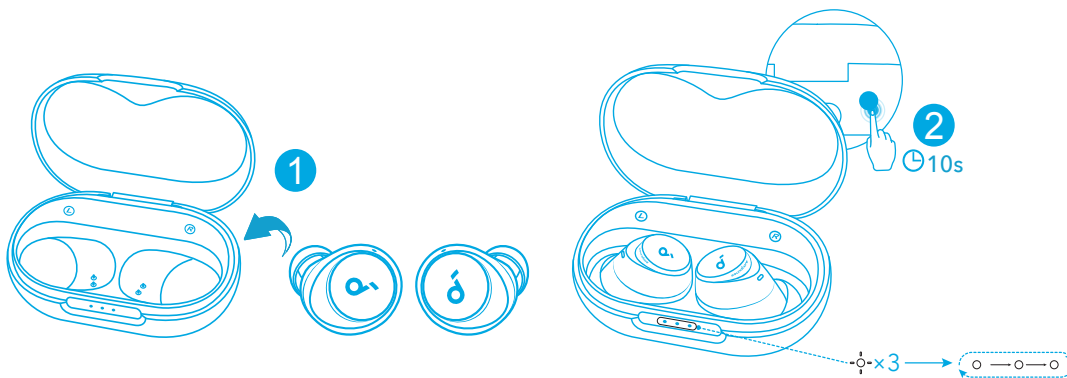
- Use devices powered by Android 8.0 or later to experience LDAC quality sound.
 - LDAC provides higher quality sound, increases power consumption, and reduces playtime.
 - Enable LDAC in a low-interference environment to ensure a stable Bluetooth connection.
1. Go to settings in the soundcore app.
 2. Click on "**Sound Mode**".
 3. Select "**Preferred audio quality**" to switch to LDAC codec.
 4. You will be notified that the earbuds do not support LDAC when connected to two devices. Select "**Turn on**" to continue.
 5. It takes about 10 seconds to switch audio codecs. You may be requested to update the earbuds' firmware if available.

POWERING OFF



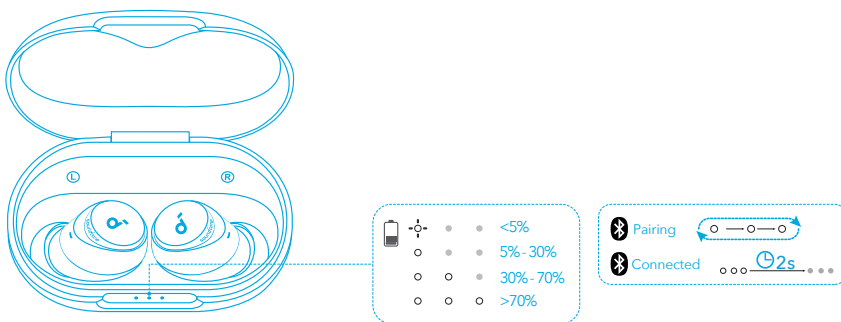
Return the earbuds to the charging case and close the case. The earbuds will automatically power off after 30 minutes if they are not connected. The duration can be set in the soundcore app.

RESET



Reset if the earbuds have issues pairing with each other or with other devices. Delete the pairing history from your Bluetooth device first. Place the earbuds in the charging case and leave the case open. Then press and hold the button on the case for 10 seconds until the LED indicators on the case flash white 3 times and then flash in sequence.

LED LIGHT GUIDE



○	Steady white
◐	Flashing white
◑	Flashing white in sequence
●	Light off

FIRMWARE UPDATE



You will be informed once the new version of firmware is detected when you connect the earbuds with the app. Ensure the earbuds are placed in the charging case and the case remains open until the firmware update is completed. During the update, ensure the earbuds are being charged and avoid any usage.

SPECS

Specifications are subject to change without notice.

Input	5V $\overline{\text{---}}$ 0.65A
Rated output power	2.2mW
Battery capacity	53mAh x 2 (earbuds); 800mAh (charging case)
Charging time	2 hours
Playtime (with ANC off)	Up to 10 hours (Total 50 hours with the charging case)
Playtime (with ANC on)	Up to 8 hours (Total 40 hours with the charging case)
Driver unit	10mm dynamic driver
Frequency response	20Hz-20KHz
Impedance	16 Ω
Waterproof level (Earbuds)	IPX4
Bluetooth version	5.3
Bluetooth range	10m / 33ft

Customer Service



service@soundcore.com
support.mea@soundcore.com (For Middle East and Africa Only)
support@anker.com (日本)

+1 (800) 988 7973 (US/Canada)
+44 (0) 1604 936200 (UK)
+49 (0) 69 9579 7960 (DE)
03 4455 7823 (日本)
+86 400 0550 036 (中国)
+82 02-1661-9246 (한국)
+971 529750842 (Middle East & Africa)
+971 8000320817 (UAE)
+966 8008500030 (KSA)
+965 22069086 (Kuwait)
+20 8000000826 (Egypt)
+61 3 8331 4800 (Australia)
+90 (850) 460 14 14 (Türkiye)
+8 (800) 511-86-23 (Russia)
+91 18003138831 (India)



Note: The 'x' of SN Code: xxxxxxxxxxxxxxxx is a variable, see below table.

Variable 'x'	Range of variable	Content
Eighth	8,9,A,B,C...	Denotes the year, 8 means 2018, 9 means 2019, A means 2020, B means 2021, C means 2022, and so on.
Ninth and tenth	01,02,03...	Denotes weeks, 01 means the first week in this year, 02 means the secondary week in this year, and so on.
Eleventh	1-7	Denotes date, 1 means Monday, 2 means Tuesday..., 7 means Sunday and so on.
The last five	00001-99999	Denotes serial No.

Hereby, Anker Innovations Limited declares that this device is in compliance with The Product Security and Telecommunications Infrastructure (Security Requirements for Relevant Connectable Products) Regulations 2023. For the Statement of Compliance, visit the website: <https://uk.soundcore.com/pages/psti-related>.

1. Power consumption in standby mode: $\leq 0.5W$
2. Powermanagement: $\leq 20min$
3. Information of applicable adapter:
Brand: ANKER
Manufacturer: Anker Innovations Limited
Model: A2337
Input: 100-240Vac, 1A, 50-60Hz
Output: 5V \equiv 3A / 9V \equiv 3A / 12V \equiv 2.5A / 15V \equiv 2A / 20V \equiv 1.5A (30W Max)

Default Open Port: Classic Bluetooth

Port Description: After the device is powered on, Classic Bluetooth visibility (or pairing mode) is automatically enabled, providing Bluetooth pairing (or control) services. The Bluetooth service is disabled when the device is powered off.