

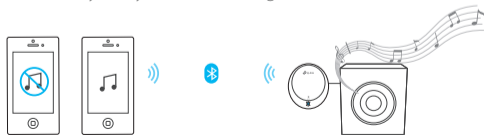
## Play Music on Another Smart Device

1. On the currently paired device, end the connection by:
  - Disabling Bluetooth or disconnecting **TP-Link\_Music**, or
  - Placing its back against the NFC Tag or Music Receiver (*only for NFC-enabled Android devices*)
2. On another device, pair to the Music Receiver, then play and enjoy music!

### Bonus Tips

After pairing a second device, you can restore connection of the former device to enjoy music from them *in turns*. Simply pause music on one device and play on the other one.

Note that audio may delay when switching from an iOS device.



## FAQ

### Q1. Why can't I pair the Music Receiver?

- A. The Music Receiver is ready to be paired only when its LED turns white. Check the LED.
  - If it is off, re-plug the power cable or try another power outlet.
  - If it is blue, check your other paired devices and end the connection.

### Q2. What can I do if my music does not come out from my stereo?

- A1. Make sure your smart device and the Music Receiver are successfully connected, within 20 meters (66 feet) of each other, and within a direct line of sight. The Music Receiver will be disconnected if your device's Bluetooth signal is blocked, interfered, or out of range for longer than 5 minutes.
- A2. Make sure your stereo and the Music Receiver are correctly connected via one of the provided audio cables, and both are powered on.
- A3. Make sure the volume on your music player and stereo are at an audible level.



For more information, please visit:  
[www.tp-link.com](http://www.tp-link.com)

#### Technical Support

Tel: +86 755 2650 4400

E-mail: [support@tp-link.com](mailto:support@tp-link.com)

Web: <http://www.tp-link.com/support>



©2017 TP-Link 7106507772 REV2.0.2



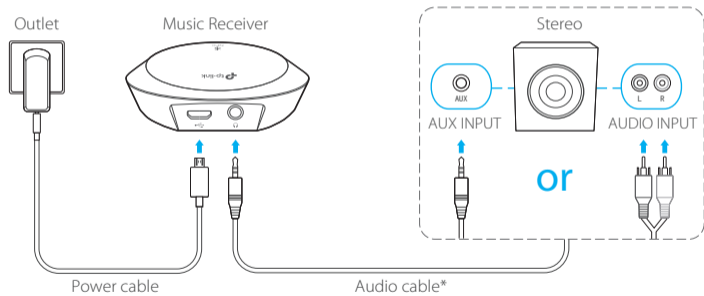
## NFC-Enabled Bluetooth® Music Receiver

Bringing Bluetooth to your home stereo

## Connect

1

Add Bluetooth to your home stereo as shown. The LED on the Music Receiver will turn white.



\* Two audio cables are provided. Choose the one that suits your home stereo.



## Pair

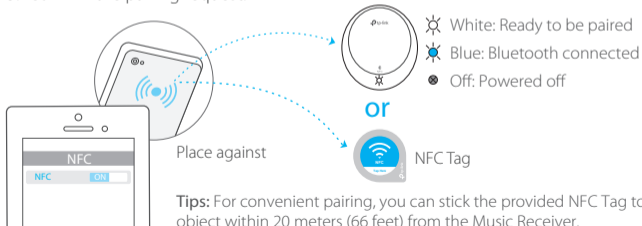
2

### Method 1: Bluetooth pairing

1. On your smart device, enable Bluetooth in **Settings**.
2. Pair **TP-Link\_Music** in the list of found devices.

### Method 2: NFC pairing *(Only for NFC-equipped Android devices)*

1. On your Android device, enable NFC (Near Field Communication) in **Settings**.
2. Place the back of your device against the Music Receiver or provided NFC Tag until the pairing request pops up.
3. Confirm the pairing request.



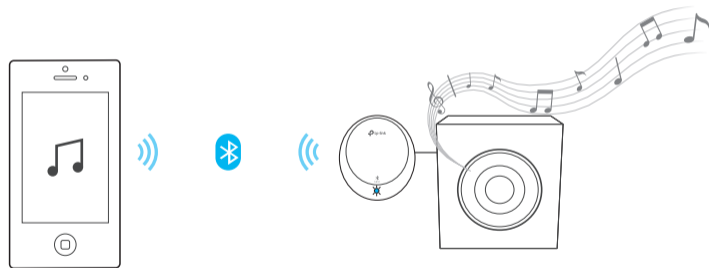
**Tips:** For convenient pairing, you can stick the provided NFC Tag to a handy object within 20 meters (66 feet) from the Music Receiver.

## Enjoy

😊

### It's music time!

Keep in mind that you can play your music from up to 20 meters (66 feet), within a direct line of sight.



**More:** Want to play music on another smart device? Flip the paper for instructions.