

Hisense

life reimagined

USER'S OPERATION MANUAL

Before operating this unit, please read this manual thoroughly, and retain for future reference.

HWF511015
HWF511015*3

HWF511015*

HWF511015*2

EN

English

Thank you very much for choosing our company's products.

- Please correctly install and use this product, and do not use this product to wash clothes that are not suitable for machine washing.
- The images in the manual are for illustration purposes only. The appearance, printing, etc. shall be subject to the actual product.
- Our company emphasizes technology updates. In order to enhance the overall performance of this appliance, we will make technical changes to it without further notice. Your understanding is appreciated.
- This product is for household use only.

The following symbols in this manual are indicated as follows:

 Information, suggestions, prompts, or advice

 WARNING - GENERAL HAZARD

 WARNING - ELECTRIC SHOCK HAZARD

 WARNING - BURN HAZARD

 WARNING - FIRE HAZARD



Please read the user manual carefully.

CONTENTS

4 SAFETY PRECAUTIONS 10 PRODUCT DESCRIPTION 11 Specifications	INTRODUCTION
12 INSTALLATION AND CONNECTION 12 Packing/Packaging 14 Removing the transport screws 15 Installation location 15 Adjustable feet 15 Installation clearance 16 Connecting to water supply 19 Connecting and securing the drain hose 20 Connecting to power mains 21 Transportation after installation 22 BEFORE THE FIRST USE	PREPARATION BEFORE FIRST USE
26 PROGRAMS AND FUNCTIONS 27 Program table 29 Additional settings and functions 35 Start the program 35 End of the program 36 PROGRAM INTERRUPTIONS AND CHANGES 38 MAINTENANCE AND CLEANING 38 Cleaning the detergent drawer 39 Cleaning the water inlet hose, detergent drawer outer compartment, and rubber door gasket 40 Cleaning the pump filter 41 Cleaning the inlet filter 41 Cleaning the outside of your washer	WASHING STEPS CLEANING AND MAINTENANCE
42 TROUBLESHOOTING 45 FAULT CODES AND TROUBLESHOOTING 46 SERVICING 46 USAGE RECOMMENDATIONS 47 RECOMMENDATIONS FOR SPECIFIC STAIN REMOVAL 49 DISPOSAL	TROUBLE- SHOOTING MISCELLANE- OUS

SAFETY PRECAUTIONS



Please read the manual carefully before using this appliance.

Do not use this appliance if you have not read or understood this manual.

This manual is applicable to multiple models. Therefore, this manual may contain functions not covered by this model.

Failure to follow the instructions or improper operation may damage clothing or the appliance, or cause injury to you. Please place the manual near the appliance for easy access.

This appliance is intended to be used in household and similar applications such as:

- staff kitchen areas in shops, offices and other working environments
- farm houses;
- by clients in hotels, motels and other residential type environments;
- bed and breakfast type environments;
- areas for communal use in blocks of flats or in launderettes.

If the appliance is used for professional, for-profit purpose or purpose exceeding normal use in a household and similar applications, or if the appliance is used by a person who is not a consumer, the warranty period shall be equal to the shortest warranty period required by relevant legislation.

This appliance is not intended for use by persons (including children) with reduced physical, sensory or mental capabilities, or lack of experience and knowledge, unless they have been given supervision or instruction concerning use of the appliance by a person responsible for their safety.

Children should be supervised to ensure that they do not play with the appliance.

Children of less than 3 years should be kept away unless continuously supervised.

This appliance can be used by children aged from 8 years and above and persons with reduced physical, sensory or mental capabilities or lack of experience and knowledge if they have been given supervision or instruction concerning use of the appliance in a safe way and understand the hazards involved.

Children shall not play with the appliance. Cleaning and user maintenance shall not be made by children without supervision.

The maximum capacity in some cycles for dry clothes to be used is Wash (10.0 kg).

The recommended maximum capacity may vary among different programs. For best results, see "PROGRAM TABLE".

To connect the appliance to water supply, make sure to use the supplied water supply hose and gaskets. Water pressure has to be between 0.1-1 MPa (1-10 bar; 1-10 kp/cm²; 10-100 N/cm²).

Always use a new water supply hose to connect the appliance to water supply, do not reuse an old water supply hose.

For appliances with ventilation openings in the base, the ventilation openings must not be obstructed by a carpet.

If the supply cord is damaged, it must be replaced by the manufacturer, its service agent or similarly qualified persons in order to avoid a hazard.

ELECTRICAL SAFETY

This appliance complies with relevant safety standards.

Before connecting the appliance to the power supply, please wait at least 2 hours to ensure it reaches room temperature.

This appliance must be repaired by an authorized service center, and only spare parts recognized by the authorized manufacturer shall be used.

Any repairs and maintenance related to safety or performance should be conducted by trained professionals.

Do not attempt to repair this appliance yourself. Repairs by unprofessional personnel may cause personal injury or more serious malfunctions. Please consult your local service center and always use original spare parts.

Do not attempt to operate the appliance if it is damaged, malfunctioning, partially disassembled, or has missing or damaged parts, including damaged wires or plugs.

Do not bend the power cord excessively or place heavy objects on it.

Do not spray water to clean inside or outside the device.

In case of flooding, please disconnect the power plug and contact the after-sales service center.

Models with drying functions have automatic heating device shutdown protection to prevent overheating. If the temperature exceeds the protection temperature, the system will automatically shut down the heating device, and when the temperature drops below the protection temperature, the heating device will resume operation.

Do not use multiple outlets, extended power cords, or dual adapters on the appliance. Do not use an extended cord to connect the appliance to the power supply.

Do not connect the appliance to the electrical socket of an electric shaver or hair dryer.

Do not connect the appliance to an electrical outlet specifically designed for low-load appliances.

Before connecting the appliance to the power supply, ensure that the electric voltage specified on the rating plate matches the Voltage of your socket.

The power socket must be safely grounded, and the water supply must remain unobstructed.

Do not connect the appliance to the power supply with an external switching appliance (such as a program timer) or connect it to a power supply that is turned on and off regularly by the power supplier.

The exhaust gas must not be discharged into the flue used to discharge combustion gases or other fuel exhaust gases.

INSTALLATION

Before using the appliance, be sure to remove the packaging (sponge, polystyrene foam, etc.) attached to the bottom of the appliance.

Please install the appliance correctly according to the instructions and connect the water and electricity (see "INSTALLATION AND CONNECTION"). The connection of water and electricity should be carried out by fully trained technicians or professionals.

Do not install this appliance in places where door opening is restricted.

Do not install the appliance in an area where the temperature may drop to 5°C below, otherwise, the parts may be damaged when water freezes.

Place the appliance on a sturdy flat surface. If the appliance is installed on a high platform, it must be secured to prevent it from tipping over.

The end of the drain hose should be placed in the drainage system.

This appliance must not be stored or used in any outdoor locations.

Avoid lint accumulation near the appliance.

Do not install the appliance near heaters or any flammable items.

Do not install the appliance in locations where gas leakage may occur.

Please ensure good ventilation conditions to avoid the gas generated by this appliance from flowing back into the room, thereby causing a fire.

USAGE

Before the first use, remove the transport screws; Otherwise, serious damage may occur when the machine is turned on (see "INSTALLATION AND CONNECTION/REMOVAL OF TRANSPORT BOLTS"). Such damage is not covered under warranty.

Inspect the appliance to see if it has been damaged during transportation. Never operate the appliance in a damaged condition.

Use detergents suitable for the appliance cleaning and clothes washing. We are not responsible for damage or discoloration of seals and plastic parts caused by the use of bleach or dyes.

Do not attempt to separate any panels or disassemble the appliance.

Do not use sharp objects like pins, knives, or fingernails to press the button.

Do not use wet hands to touch the power plug or operate the appliance.

This appliance is only suitable for ordinary washing or drying of clothes (models with drying function), not for dry cleaning.

Because the appliance is heavy, you may injure yourself trying to lift it. Do not lift the appliance yourself; your hands may be cut by its sharp edges.

Do not grasp the appliance by its protruding parts. The protruding parts on the appliance may break when lifting or pushing the appliance.

Do not wash clothes with large buttons or other heavy metal items. Make sure all the pockets in the laundry are empty. To prevent odors and mildew, open the door after the wash cycle ends and let the drum air dry.

Do not leave metal objects in the drum for a long time.

The door glass may break due to strong impact, so be careful when using the appliance.

Place the laundry completely inside the drum so that the clothes will not be caught by the door.


When the appliance is not in use, turn off the water supply and unplug the power cord from the power socket.

Do not put animals (such as pets) into the appliance.

TRANSPORTATION/TRANSPORT AFTER INSTALLATION


If you plan to move the installed appliance, install the transport screws (See "INSTALLATION AND CONNECTION/MOVING AND TRANSPORTING AFTER INSTALLATION"). Before installing the transport screws, unplug the power plug!

After the washing program ends, turn off the tap and unplug the power plug. Never unplug an appliance by pulling on the power cord. Always firmly grasp the power plug and pull it directly out from the socket.

 Do not use detergents containing solvents, as these may release toxic gases, damage the appliance, and cause fire or explosion hazards.

Do not force the door open while the appliance is in operation (high temperature washing/dehydrating).

Do not use the appliance after cleaning with industrial chemicals.

 The wastewater discharged during high-temperature washing is hot, so do not touch it to prevent burns.

Clothes stained with substances such as cooking oil, acetone, alcohol, gasoline, kerosene, stain removers, turpentine, wax and wax removers should be washed first with hot water and plenty of detergent, then washed in the drum.

Use softeners or similar products according to the instructions for use with the softener.

Please remove all items from the garment pocket, such as lighters and matches.

BURN HAZARD

The door may become hot during washing and drying. Be careful to avoid burns. Do not let children play near the door. Do not touch the door glass during the operation of the appliance.

WATER LEAKAGE PROTECTION (while the appliance is on)

If the water level in the appliance exceeds the normal level, the water level protection function will be activated. This function will stop the water supply and start draining. The current program is interrupted and an error message is reported.

Do not wash or dry items such as foam rubber (latex foam), shower caps, waterproof fabrics, rubber products, clothes with foam rubber pads, or pillows in the drum.

WARNING

If your appliance has a drying function, do not stop the program before the drying cycle ends. If you need to interrupt the program for any reason, carefully remove the clothes to avoid burns. Quickly remove the clothes and spread them out to cool down quickly.

CHILD SAFETY

Before you close the appliance door and run the program, please ensure that there is only clothing in the drum. Make sure that no children climb into the appliance and close the door from the inside.

Do not let the appliance door stay open. Children may hang on the door or climb inside the appliance, causing damage or injury.

Keep all packaging materials in a place out of the reach of children, as these may be dangerous.

Keep detergent and softener out of the reach of children.

SERVICING

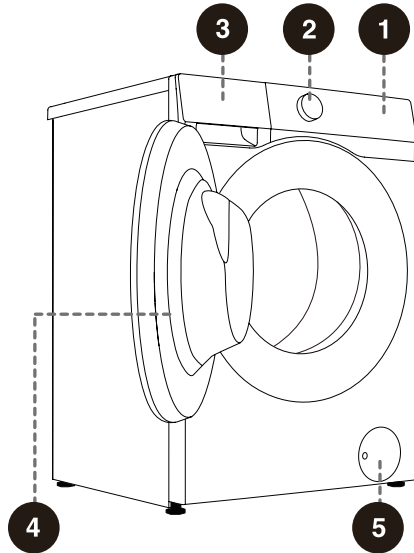
The user shall be responsible for the maintenance cost of damage caused by improper connection, improper installation and use, or repair by unauthorized personnel, as such damage is not included in the warranty.

The warranty does not include consumables, slight color deviations, increased noise due to device aging (which does not affect the functionality of the device), and cosmetic defects of parts (which do not affect the functionality and safety of the appliance).

PRODUCT DESCRIPTION

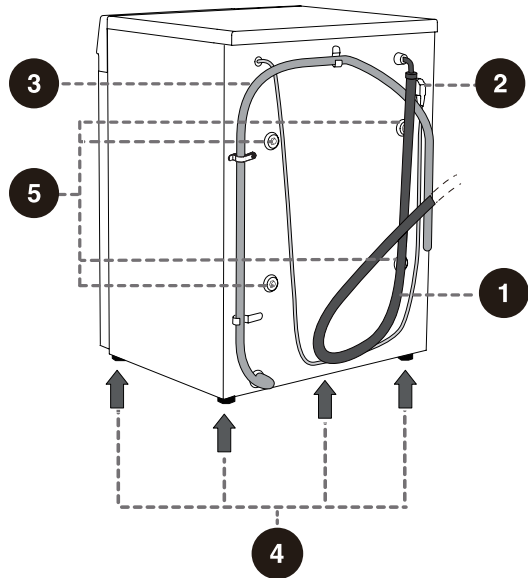
FRONT


- 1 Control panel
- 2 Knob
- 3 Detergent drawer
- 4 Door
- 5 Drain pump filter door cover



BACK

- 1 Water inlet hose
- 2 Power cord
- 3 Drain hose
- 4 Adjustable feet
- 5 Transport screw



 The illustrations in this manual are for demonstration purposes only. Due to product improvements and series expansion, the product appearance, color, and functional components you receive may differ from the illustrations in this manual. Please refer to the actual product.

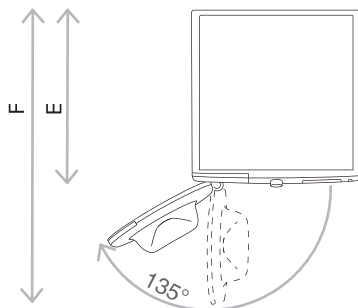
SPECIFICATIONS

(DEPENDING ON THE MODEL)

Maximum load	10.0kg
Net weight	65kg
Rated voltage	220-240V~
Frequency	50Hz
Rated power	1900W

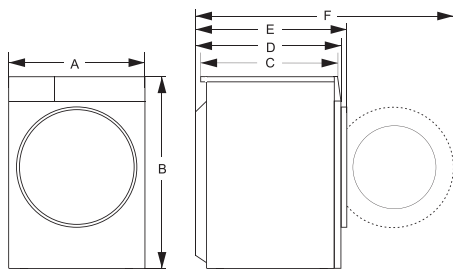
DIMENSIONS (MM)

Index	Dimensions (mm)
A	595
B	845
C	515
D	550
E	580
F	1075



E = Appliance depth

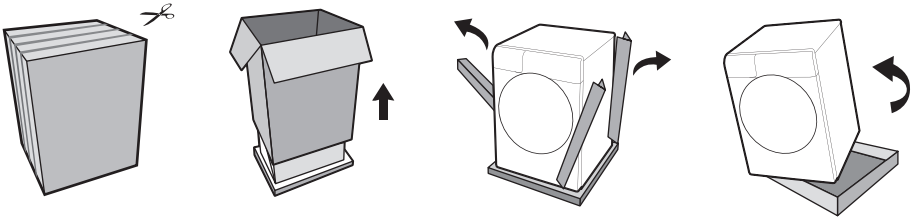
F = Depth with door open



INSTALLATION AND CONNECTION

PACKING/PACKAGING

💡 Please first remove all the packaging and foam, especially the foam base. When unpacking the device, please do not use sharp objects to damage it. Keep packaging materials (plastic bags, other plastic parts, etc.) out of reach of children.



💡 The process of packing the machine is just the opposite of unpacking above.

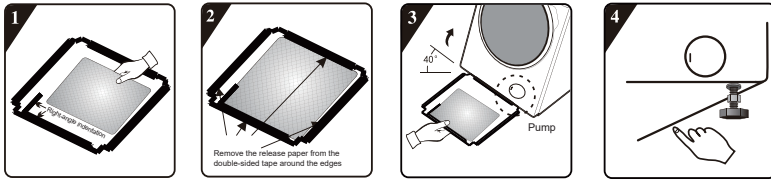
💡 Please check the device for any damage. If damaged, do not use it, and immediately contact after-sales service.

The accessories included with this appliance include one or more of the following:

- User Manual;
- 4 transport screw covers;
- Water inlet hose;
- Water drain hose bracket;
- Wrench;
- Noise reduction board/sponge strip/none (subject to the actual model).

Different models have different configurations, and the accessories included with this device are subject to the actual configuration of the model.

INSTALLATION METHOD OF THE NOISE REDUCTION BOARD:



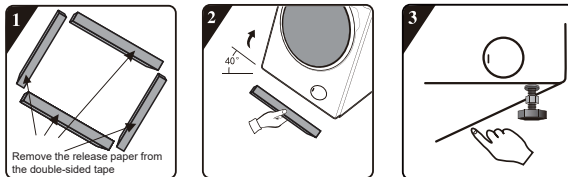
1 Before installing the noise reduction board, align and attach the sound-absorbing cotton along the right-angle crease on the bottom cover (this step can be skipped for some models without sound-absorbing cotton).

2 Peel off the release paper from the double-sided tape around the bottom cover.

3 Tilt the appliance at a 40° angle, with the right-angle notch facing the front of the appliance as shown in the illustration. Insert the oblique-angle notch between the two foot screws at the rear of the appliance until fully inserted. Close the bottom panel so that it fits tightly against the bottom of the appliance.

4 Use your hand to press the double-sided tape around the edges firmly, ensuring the noise reduction board is securely attached to the appliance body.

INSTALLATION METHOD OF THE SPONGE STRIPS:



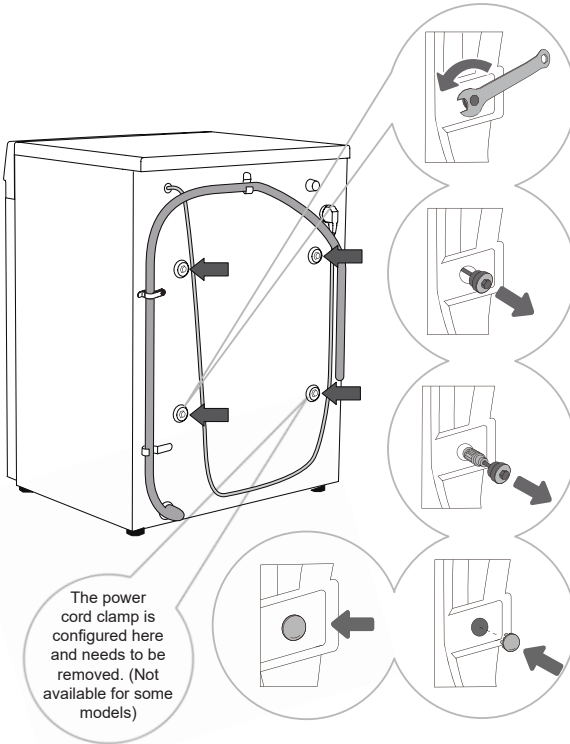
1 Peel off the release paper from the double-sided tape on the sponge strips.

2 Tilt the appliance at a 40° angle, stick 2 long sponge strips on the front and rear support positions at the bottom of the appliance body, and stick 2 short sponge strips on the left and right support positions.

3 Use your hand to press and firmly attach the sponge strips.

REMOVING THE TRANSPORT SCREWS

⚠ After removing all packaging, remove the transport screws. Otherwise, this equipment may be damaged during use. Such damage is not covered under warranty.



1 Place the drain hose aside. Using a suitable wrench to loosen the 4 screws on the back by turning counterclockwise in the direction indicated by the arrows. Loosen each screw by approximately 30 mm.


2 Pull out the 4 transport screws horizontally.

3 Horizontally pull out the transport screws together with the rubber and plastic parts.

4 Use transport screw covers to cover the screw holes. (Transport screw covers and instruction manual are included in the supplied accessories.)

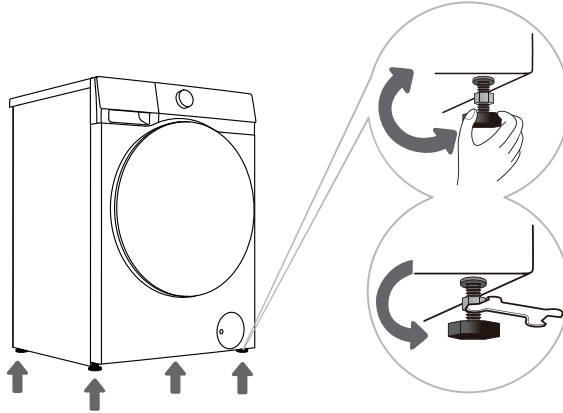
💡 Please keep the transport screws for future transportation. If reinstallation of the transport screws is required, follow the above steps in reverse order.

INSTALLATION LOCATION

 Please place the appliance on a solid surface and keep it steady. The flat surface should be kept clean and dry; otherwise, the appliance may slip. Also, clean the bottom of the adjustable feet.


ADJUSTABLE FEET


Use a spirit level and a suitable wrench.



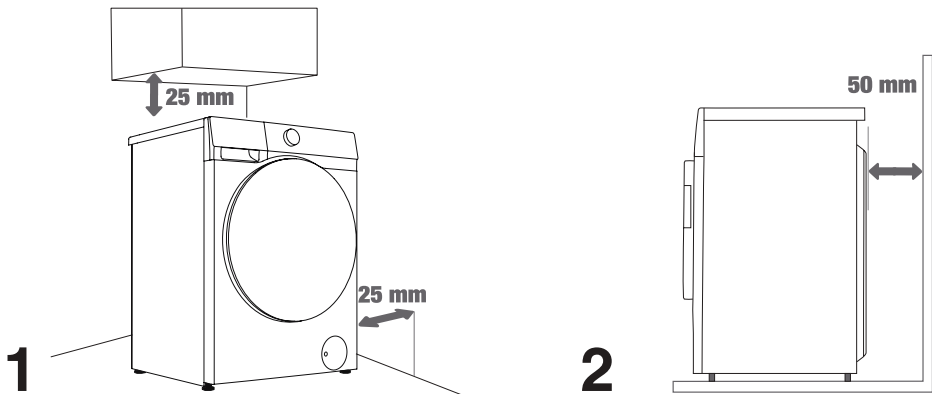
1 Adjust the level by rotating the adjustable feet. The adjustable feet allows for 2 cm of level adjustment.


2 After adjusting the height, tighten the lock nut anticlockwise using a suitable wrench (see the figure).

 If the equipment is not placed steadily, it may cause vibration, sliding, and noise. The damage caused by improper level adjustment is not covered by the warranty.

 During appliance operation, abnormal or noisy sounds may occur, which are mainly caused by improper installation.

INSTALLATION CLEARANCE

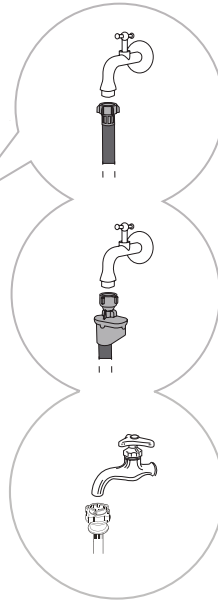
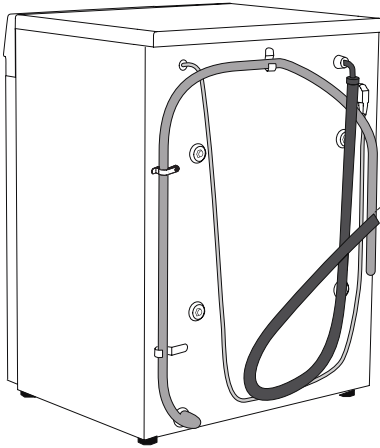


 Space should be left between the appliance and the walls or furniture. To ensure optimal operation of the appliance, leave some clearance on all sides as shown in the figure.

Failure to maintain the minimum required clearance may result in safety hazards, abnormal operation. Overheating may also occur (Figures 1 and 2).

CONNECTING TO WATER SUPPLY

Different models have different water inlet hoses. Connect the inlet hose to the tap properly according to the actual hose.



A European water inlet hose connection

B AquaStop connection

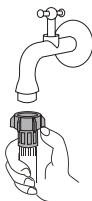
C Chinese water inlet hose connection

- ☀ To ensure normal operation, the inlet water pressure must be between 0.1-1 MPa (1-10 bar, 1-10 kp/cm², 10-100 N/cm²). The minimum dynamic water pressure can be determined by measuring the water flow. Open the tap fully and 3 liters of water should flow out within 15 seconds.
- ☀ Use the new water hose that comes with the appliance. Do not use old water hoses or other water hoses.
- ☀ Ensure the water hoses are not damaged. If the water hose is aged, brittle or cracked, it must be replaced.
- ☀ The appliance can only be connected to a cold water inlet and cannot be connected to a hot water inlet.

EUROPEAN WATER INLET HOSE CONNECTION

Gently tighten the water hose by hand to ensure a good seal (maximum torque: 2 Nm). Check whether there is any water leakage at the seal.

Do not use pliers or similar tools to avoid damaging the threads of the nut.



AQUASTOP CONNECTION

If the internal pipes or water hoses are damaged, the shutdown system will be automatically activated to cut off the water supply to the appliance. In this case, the control window (a) will turn red. Please replace the water pipes.



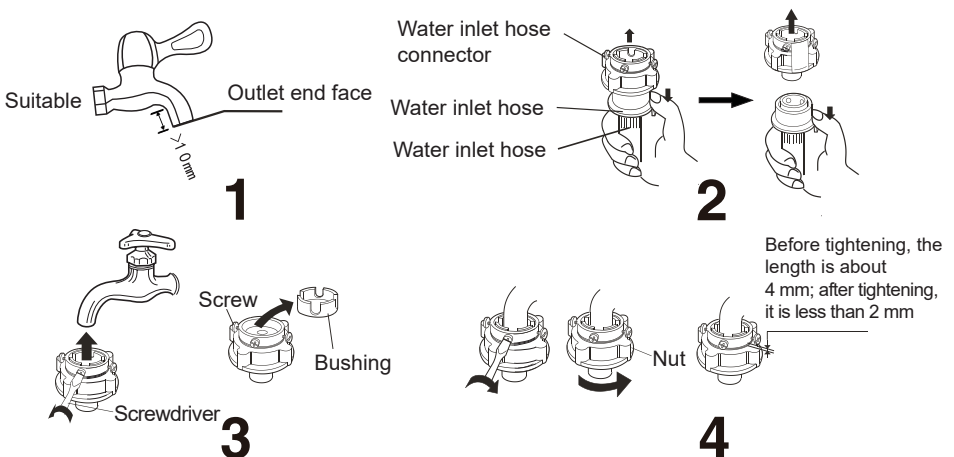
The AquaStop system contains an electric valve; therefore, do not immerse the water hose equipped with the AquaStop system in water.

The water hose can also be connected without using a check valve.

CHINESE WATER INLET HOSE CONNECTION

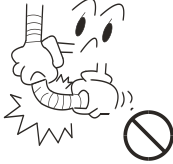
1. Select a suitable water tap; the front end length of the water tap must be greater than 10 mm. The outlet end face must be kept flat. If it is uneven, file it flat with a file to prevent water leakage after installation, as shown in Figure 1.
2. Push the slider downward to detach the water inlet hose connector from the water inlet assembly, as shown in Figure 2.
3. Loosen the 4 screws on the water inlet hose connector, then connect the water inlet hose connector to the water tap (if the water tap diameter is too large and cannot connect to the water inlet hose connector, loosen the 4 screws and remove the bushing), as shown in Figure 3.
4. Evenly tighten the 4 screws on the water inlet hose connector, then tighten the nuts, as shown in Figure 4.
5. If the appliance is to be used once or multiple times within a week, push down the slider and do not disassemble the water inlet hose connector to prevent damage to the fixing screws.

Note: The exposed thread length before tightening the fastening nut is approximately 4 mm; after tightening, the exposed thread length is less than 2 mm, as shown in Figure 4.



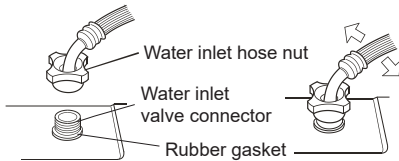
CHECK THE CONNECTION BETWEEN THE WATER INLET HOSE AND THE WATER TAP


1. Gently pull the water inlet hose to check if the connection is secure.
2. Open the water tap to check for any leaks.
3. The water inlet hose should be free of twists and bends.
4. Before each use, check the water inlet hose connection to prevent improper connection.



CONNECTION BETWEEN THE WATER INLET HOSE AND THE APPLIANCE

Connect the water inlet hose nut to the appliance water inlet valve connector, tighten the nut, and gently shake it to check if it is tightened, as shown in the right figure.

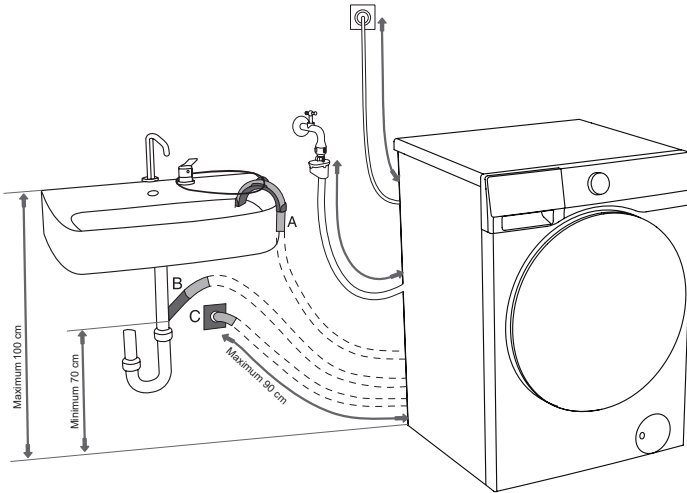


 Note:

1. Tighten evenly and do not screw into the water inlet hose, otherwise the water inlet hose joint will be damaged.
2. Do not remove the rubber gasket. Check whether the rubber gasket is detached or damaged every time you use the appliance. If there is any damage, contact after-sales immediately.

CONNECTING AND SECURING THE DRAIN HOSE

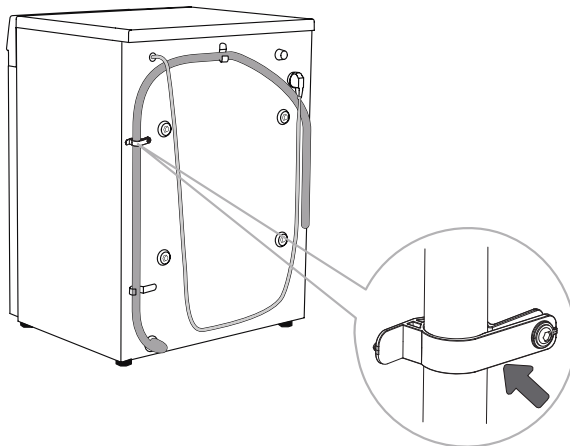
Put the drain hose into the washbasin or bathtub, or connect it directly to the drain outlet (the minimum diameter of the drain hose is 4 cm). The vertical distance of the drain hose from the ground is 70-100 cm. There are three ways to connect the drain hose (A, B, C).



A Put the end of the drain hose into the sink or bathtub. Use cable ties to secure the drain hose through the elbow bracket to prevent it from slipping.

B Place the drain hose directly into the sink drain outlet. Do not use a small sink. Note that the drained water may be hot.

C Connect the drain hose to the drain outlet on the wall with the water storage bend, and install it correctly for cleaning.



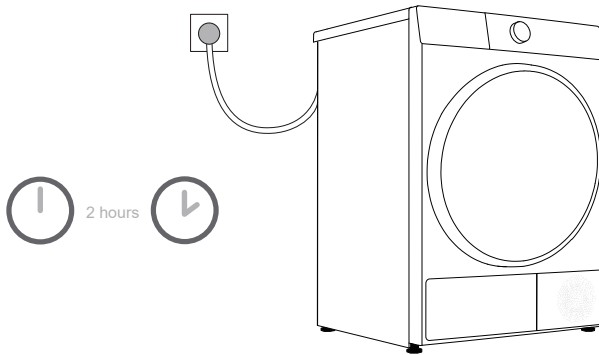
D The drain hose must be fixed to the hose clamp on the back of the appliance as shown.


⚠ The hose clamp is not allowed to be removed, otherwise, it will cause improper washing.

💡 Make sure the drain hose is not damaged.

💡 Failure to properly install the drain hose may result in safety hazards or abnormal operation.

CONNECTING TO POWER MAINS




 **Before connecting the appliance to the power supply, please wait at least 2 hours to ensure it reaches room temperature.**


This appliance is connected to a grounded power socket, and there should be no obstructions between the appliance and the socket. The power socket should have compliant grounding protection. For basic information about the appliance, please refer to the nameplate.


 **It is recommended to use overvoltage protection devices to protect this appliance from lightning strikes.**

 Do not use an extension cord to connect the appliance to the power supply.

 Do not connect the appliance to a power outlet designated for light-load appliances.

 Please do not plug or unplug the appliance with wet hands.

 The repair and maintenance of this appliance should be handled by professionally trained personnel.

 Only personnel authorized by the manufacturer can replace a damaged power cord.

TRANSPORTATION AFTER INSTALLATION

💡 If you need to transport an installed device, first unplug the power plug, turn off the tap, remove the water inlet and drain hoses, and make sure the detergent box and door are closed properly.

Be sure to reinstall the transport screws to prevent vibrations during transport from damaging the device (see "INSTALLATION AND CONNECTION/REMOVING THE TRANSPORT SCREWS/RODS"). If you accidentally lose the transport screws, you can order them from the manufacturer.

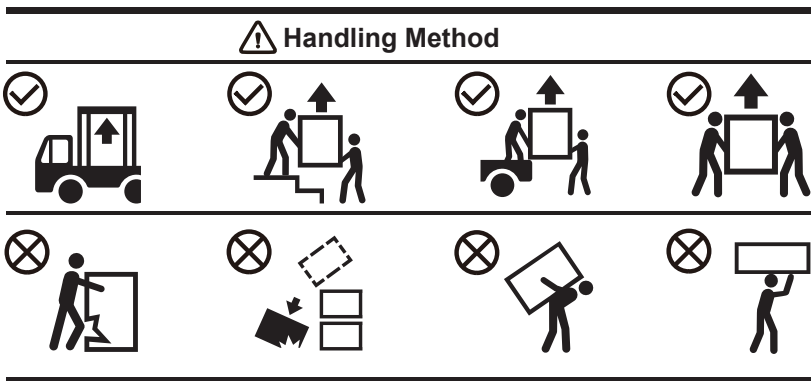
Pack all packaging materials (plastic bags, other plastic parts, etc.).

⚠️ The device is heavy. Please use at least two people to move it. When transporting, do not hold protruding parts such as the door, top cover, etc., to prevent them from falling off or being damaged.

⚠️ After transport, let the device sit for at least 2 hours before connecting it to the power supply. The device should be installed and connected by trained technicians.

⚠️ Please read the instructions carefully before reconnecting the device. Damage caused by improper connection or use is not covered by the warranty.

Transport and Handling Method




BEFORE THE FIRST USE



























THE FIRST USE

The appliance has been tested before leaving the factory, and there may be a small amount of water residue. It is recommended to run the "Drum Clean" (or other high-temperature) program before use to clean the residual water in the drum.

- Connect the power and turn on the tap. Do not put clothes in the drum. Select and start the program.

 Do not use solvents or cleaning agents that may damage the appliance (please follow the recommendations and warnings provided by the cleaning agent manufacturer).

PAY ATTENTION TO CLOTHING LABELS



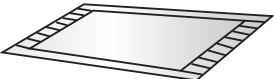


Washing	Maximum water temperature 95°C  	Maximum water temperature 60°C  	Maximum water temperature 40°C  	Maximum water temperature 30°C  	Hand wash only 	Do not wash 
Rinsing	Rinse in cold water 			Do not rinse 		
Dry cleaning	It can be dry cleaned. No restrictions on detergent 	Dry clean with petroleum solvent R11 and R113 	Dry clean with kerosene, pure alcohol, and R113 		Do not dry clean 	
Ironing	Maximum ironing temperature 200°C 	Maximum ironing temperature 150°C 	Maximum ironing temperature 110°C 		Do not iron 	
Drying	Dry flat (placed on a flat surface) 	Drip dry  Line dry 	High heat  Low temperature 		Do not dry 	

PREPARATION FOR WASHING





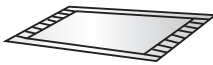



1. Classify clothing according to its type (cotton, blended fiber, silk, wool, etc.), label requirements, color (white, colored, etc.), degree of soiling, etc.
2. Empty all pockets. Remove metal items that could damage clothing or the appliance. Fasten buttons and turn garments with buttons or embroidery inside out. Zip up and tie any drawstrings.
3. Place sensitive clothing and small, lightweight clothing into a mesh laundry bag and wash them together with other clothing.
4. For clothes with pilling surfaces or long pile fabrics, please turn them over before washing.
5. Stains will be difficult to clean after being left for a long time. Please pre-treat the soiled areas such as the cuffs and collars of your clothes before washing (refer to "RECOMMENDATIONS FOR SPECIFIC STAIN REMOVAL").
6. Do not wash heavy quilts, plush toys, or clothes in laundry bags separately to avoid unbalance error.




CLOTHES THAT ARE UNSUITABLE FOR BOTH WASHING AND DRYING

 <p>Leather or fur products (may cause deformation)</p>	 <p>Rayon and its blended fabrics (may cause discoloration or deformation)</p>	 <p>Rubber-made or large-sized thick mats (may cause damage or malfunction)</p>
 <p>Hats containing hard materials (may damage the washing machine and cause malfunctions)</p>	 <p>Seat cushions, pillows, items containing cotton wool, foam, and other sponge materials, and carpet covers (may cause damage or malfunction)</p>	<p>Others:</p> <p>Wrinkled or embossed processed clothing; coated down clothing; crepe fabrics;</p> <p>Clothing prone to deformation (suits, jackets, ties, dresses, etc.);</p> <p>Clothes prone to pilling (silk velvet or cotton velvet).</p>

CLOTHES THAT ARE UNSUITABLE FOR DRYING (APPLICABLE TO MODELS WITH A DRYING FUNCTION)

 <p>Any clothing marked with any of the above symbols (may damage the clothing)</p>	 <p>Woolen clothing (may cause shrinkage and pilling)</p>	 <p>Tights and stockings (may cause damage or deformation)</p>	 <p>Starched clothing</p>
 <p>Mats and fur clothing (may cause damage or malfunction)</p>	 <p>Quilt (may cause damage or malfunction)</p>	 <p>Clothes with lace and embroidery and new synthetic fibers (ultra-fine fibers) (may cause deformation)</p>	 <p>Silk</p>

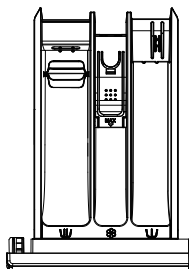
 Non-washable•Dryable/Non-dryable clothes include, but are not limited to, the above-mentioned clothes.

 Check the clothing label to confirm that the garment has a machine-washable/dryable symbol.

 Wet clothes that are still dripping are not suitable for drying and may cause the appliance to alarm.

ADD DETERGENT/SOFTENER

DETERGENT DRAWER



DETERGENT DRAWER	
	Prewash compartment
	Main wash compartment
	Softener compartment

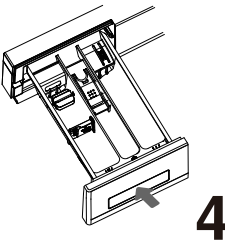
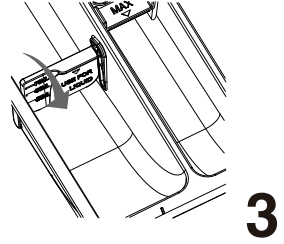
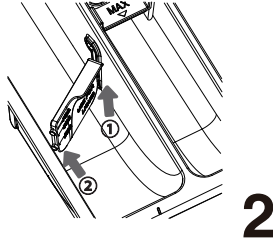
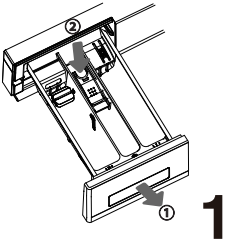
PRECAUTIONS FOR USE


1. Always use a high-efficiency neutral low-foaming detergent suitable for this appliance. The amount of detergent to be used depends on the type of clothing, degree of soiling, color of clothing, and washing temperature. Please add an appropriate amount according to the detergent manufacturer's instructions.
2. Excessive detergent may cause foaming, which will affect the washing effect. If the appliance detects too much foam, it may pause the program for defoaming.
3. If insufficient detergent is used, it may result in poor washing performance and could also lead to the formation of limescale in the drum and water hoses.
4. When adding powder detergent, we recommend adding it immediately before the wash program starts. If you add detergent in advance, make sure that the detergent drawer is completely dry; otherwise, the powdered detergent may harden and clump before the washing program begins.
5. If you are using the "Reservation" function (if available) or have selected the "Pre-Wash" function (if available), do not use liquid detergent, as liquid detergent will be dispensed immediately and may become sticky in the dispenser drawer or drum.
6. Do not allow detergent to harden, as this may cause clogging, poor rinsing, or odor.
7. Pour the softener into the compartment marked with the "" symbol in the detergent box and follow the instructions on the softener packaging. Do not add more softener than the MAX mark on the softener compartment, otherwise the softener will be added to the clothes too early, resulting in poor washing results.
8. Keep detergent and softener out of the reach of children.
9. Corrosive descaling agents may damage the appliance. Do not use solvents. Do not wash clothing that has been cleaned with solvents or flammables.
10. If you use modern phosphate-free detergent, white residue (streaks, etc.) may appear on black clothing. In this case, you can scrub off the white stripes and then use a liquid detergent.
11. Before starting a program, gently close the detergent drawer. Closing the detergent drawer forcefully may cause the detergent to spill into other compartments or be placed in the drum earlier than the time set in the program. When closing the detergent drawer, be careful not to get your hands caught.
12. At the end of the program, a small amount of water may remain in the dispenser drawer.
13. The detergent dispenser drawer is not designed for adding disinfectants. It is not recommended to use disinfectant. If disinfectants are necessary, make sure to choose products designed for fabrics. Avoid using disinfectants containing strong corrosive or bleaching agents. Use only after proper dilution, and strictly control the concentration and frequency of use (it is recommended to use no more than once a month) to prevent damage to equipment or fabrics.

INSTALLING/USING THE BAFFLE

If your accessories are equipped with baffles, follow the steps below to install the baffles in place for a better detergent dissolution effect when using detergent.


1. Pull out the detergent drawer. Press the small tab in the detergent drawer to pull out the detergent drawer.
2. With the scale line of the baffle facing the operating side, first, insert the two guide posts on one side of the baffle into the slots, then gently pull the detergent drawer, and finally, insert the two guide posts on the other side into the slots on that side.
3. Slide the baffle forward and downward to lower the baffle.
4. Put the detergent drawer back into place.




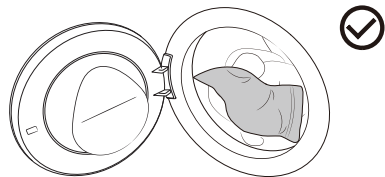
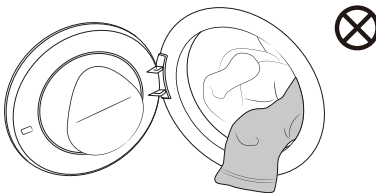
 When using powdered detergent or gel detergent, always remove the baffle to prevent detergent residue.

PUT IN THE LAUNDRY

Open the machine door, make sure there is no foreign matter in the drum, and put the clothes loosely into the drum. Close the door until you hear a "click" indicating it is securely closed.

 Do not overload the drum! Refer to the "PROGRAM TABLE" for the maximum load. If the drum is too full, the clothes may not be cleaned effectively.

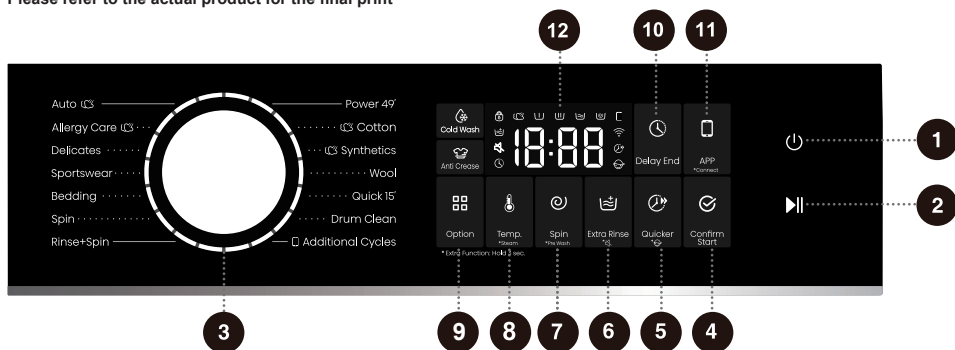
 Please put the laundry into the drum completely to prevent the clothes from getting caught in the door.





PROGRAMS AND FUNCTIONS

CONTROL PANEL

Please refer to the actual product for the final print







1 Power 
Used to turn on/off the device power.


2 Start/Pause 
Used to enter the ready-to-start state, activate the startup process, and pause the program.

3 Cycle Selector
Turn the knob to select the program.

4 Confirm Start
Used to confirm and ultimately start the device. It must be pressed within 60 seconds after the "Start/Pause" key is pressed when the device is in the start preparation state.


5 Quicker 
Short press the button to reduce the washing time of the program.
* 
Long-press turns the Child Lock function on/off.

6 Extra Rinse 
Press to increase the number of extra rinses for the program.
* 
Press and hold to turn the mute function on/off.

7 Spin
Press to select the program's spin speed.
* **Pre Wash** 
Long press to turn on/off the prewash function of the program.

8 Temp.
Press briefly to select the washing temperature of the program.
* **Steam**
Press and hold to activate/deactivate the steam function.

9 Option
Press this button to select additional functions for the program.

10 Delay End 
This function allows you to schedule laundry at your convenience.

11 APP 
Short press to turn on/off the device's APP remote control.
* **Connect** 
Long press to turn on/off the Wi-Fi function of the device.

12 Display
Used to display the remaining time of the program, reservation time, fault code, and other related information.


***Extra Function: Hold 3 sec.**

For extra function:
Press and hold for 3 seconds.

PROGRAM TABLE

Turn on the power of the appliance and turn the main knob to select the appropriate program (depending on the type of clothing and the degree of dirtiness). During operation, the main knob will not turn automatically.

Program	Maximum load (kg)	Maximum speed (rpm)	Program description
Power 49' (-, 20°C, 30°C, 40°C)	5	1500	This program is suitable for washing a small amount of heavily soiled laundry, with an intensive wash cycle in a short period of time.
Cotton (-, 20°C, 30°C, 40°C, 60°C, 90°C)	10	1500	This program is suitable for washing cotton or linen fabrics that are moderately and heavily soiled.
Synthetics (-, 20°C, 30°C, 40°C, 60°C)	5	1500	This program is suitable for washing synthetic fabrics with a moderate soil levels.
Wool (-, 20°C, 30°C, 40°C)	2	600	This program is suitable for washing machine washable woolen clothes (refer to the laundry label requirements).
Quick 15' (-, 20°C, 30°C, 40°C)	2	800	This program is suitable for washing a small amount of laundry or lightly soiled laundry. If you change the default setting, the washing time will be longer.
Drum Clean (90°C)	/	800	This program is used to clean the drum and remove detergent residues, as well as bacteria that accumulate and grow when washing at low temperatures. Do not add detergent/softener for this program.
Rinse+Spin -	10	1500	This program is for separate rinsing and spinning of laundry. Do not add detergent for this program.
Spin -	10	1500	This program is used for separate spinning of laundry. Do not add detergent/softener for this program.
Bedding (-, 20°C, 30°C, 40°C, 60°C)	3	1500	This program is suitable for washing large-sized clothes, such as curtains, sheets, quilt covers, etc.
Sportswear (-, 20°C, 30°C, 40°C)	4	1000	This program is suitable for washing machine washable sportswear clothing.
Delicates (-, 20°C, 30°C, 40°C)	3	600	This program is suitable for washing machine washable silk fabrics (refer to the laundry label requirements). It is not recommended to add softener for this program.
Allergy Care (60°C)	2	1500	This program is suitable for washing clothes that are resistant to high temperatures and are not easy to fade. It removes allergens such as pollen, mites, parasites, etc. through high temperatures. This program includes the steam wash function by default and it cannot be canceled.
Auto (-, 20°C, 30°C, 40°C)	6	1500	This program can automatically adjust the main wash time and rinse times according to the weight of the laundry and is suitable for washing lightly soiled clothing.

Program	Maximum load (kg)	Maximum speed (rpm)	Program description
 Additional Cycles			
Baby Care (40°C, 60°C, 90°C)	2	1500	This program is suitable for washing baby clothes, underwear, etc., and sterilizes them at high temperatures. It is not recommended to add softener for this program.
Down (-, 20°C, 30°C, 40°C)	3	600	This program is suitable for machine-washable items filled with down, such as pillows, mattresses, and bed covers, as well as items filled with synthetic fibers.
Pet (-, 20°C, 30°C, 40°C, 60°C)	5	1500	It is suitable for washing clothes with pet hair.

Note for Additional Cycles:


Users need to enable the device's APP remote control module and connect the APP on their smartphone to use Additional Cycles. When the device is not connected to the network, the default program for Additional Cycles is "Pet". After connection, users can select "Pet," "Down," "Baby Care," and other programs in Additional Cycles through the mobile APP.


Australian Performance Testing Programmes:


The program 'Cotton+Press Option 5 Seconds' is recommended for a normally soiled load of 10 kg.

Note

- (1) Water temperature: Select the appropriate water temperature according to the selected washing program. When washing, follow the clothing manufacturer's washing label or instructions to avoid damaging the clothing.
- (2) The actual water temperature may differ from the stated program temperature.
- (3) Test results depend on water pressure, water hardness, inlet water temperature, room temperature, type and amount of laundry, degree of soiling, detergent used, power supply fluctuations and other options selected.
- (4) If you add too much laundry during the wash cycle, the laundry may be washed less efficiently because the machine initially detects a lower weight and adds less water. Insufficient water can also cause damage to the laundry and the wash time will be longer.
- (5) Drum Clean (if available): The drum must be emptied before using the Drum Clean program. It is recommended to run it at least once a month.
- (6) For descaling, use a descaling agent with corrosion protection (only use non-corrosive descaling agents and follow the instructions for use of the descaling agent). Run the "Drum Clean" (or other high temperature) program several times to remove any descaling agent residues and complete descaling. It is recommended to descale at least once every six months.

 The maximum or nominal load applies to laundry prepared in accordance with the relevant provisions of standard IEC60456.

 For better washing performance, we recommend that you fill no more than 2/3 of the drum volume when using the Cotton program.

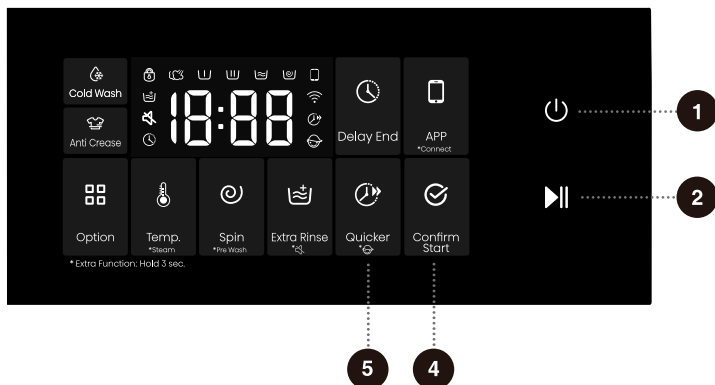
 The loading procedure for the performance program is as follows:
From bottom to top, in order: first half of the bed sheets, then all bath towels, tablecloths, shirts, T-shirts, and pillowcases, followed by the remaining half of the bed sheets. All underwear, dishcloths, and handkerchiefs should be placed in the gaps.

ADDITIONAL SETTINGS AND FUNCTIONS

The program comes with default settings, and some functions can be changed by user. You can adjust the settings by pressing the corresponding function button (before pressing the **Start/Pause** button).

Some settings cannot be selected or changed in some programs. These settings will not light up, and the buttons are inactive (see "FUNCTION SELECTION TABLE").

Most functions can only be set in standby mode, i.e., before a program starts. After starting the program, most functions cannot be adjusted anymore.



2 Power

Used to turn the device's power on or off.

If you need to shut down the program during operation, press and hold the "Power" button to shut down.

In standby mode, after a program ends, if no operations are performed for a period of time, the device will automatically shut down.


3 Start/Pause

Used to enter the ready-to-start state, activate the startup process, and pause the program.

Press this button to enter the ready-to-start state and start a 60-second countdown. Within these 60 seconds, the device awaits the confirmation operation of the "Confirm Start" button. If the "Confirm Start" button is not pressed within 60 seconds, the device will automatically exit the ready-to-start state.

4 Confirm Start

To ensure child safety, the "Confirm Start" button must be pressed within 60 seconds after the "Start/Pause" button is pressed. This button serves as the final confirmation for startup. The device will formally start only if the "Confirm Start" button is pressed while it is in the ready-to-start state.


 The device cannot be started if the door is not closed or the door lock is not locked.

5 Quicker

This function can shorten the washing time and speed up the washing process. Press this key. When the icon lights up, the quick wash mode is activated. For each shorter time gear selected, the maximum laundry load capacity is reduced to half that of the preceding gear. Press this button repeatedly until the icon turns off to disable this function; the washing time and maximum laundry load capacity will return to their initial settings. The selectable acceleration gears may vary depending on the model and program. For programs with auto-weighing, this function will pause auto-weighing when enabled. The auto-weighing feature will resume after it is disabled.

* 

To prevent children from operating the device accidentally and protect their safety, this device is equipped with a child lock function.

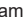
Long-press the button, the Child Lock icon  lights up and the child lock function is turned on. The same operation can be used to disable the Child Lock.

When the child lock is activated, only the Power button (for turning off the appliance) and the child lock release function remain operable. All other buttons and knob operations are locked. The child lock function is automatically released when the program ends or after a restart.




8 7 6

6 Extra Rinse

The function is used to increase the additional rinse times for the program. Before starting the program, short press the button, the "" icon lights up, and the "Extra Rinse" function is turned on. The same operation can be used to turn off this function. By adding an extra rinse, the program will perform an additional rinse cycle before softening, and the total program running time will be increased accordingly.

* 

Press and hold this button to mute all prompt sounds except the alarm sound, reducing noise. When the device is in standby, pause, or running state, long-press the button, the "" icon lights up and the Mute function is turned on. Except for the alarm sound, all sounds of the device are muted. The same operation can be used to disable the Mute function, and all notification sounds will be restored.

7 Spin

This function can adjust the program's spin speed before the program starts. Press this button; the current spin speed will be displayed for the first time. Continue to press to cycle through the set gears (when the spin speed is set to "0", the device will drain water only without spinning).

* Pre Wash

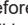
This function can add a prewash process before the main wash phase to enhance the washing effect. Before starting the program, press and hold this button to turn this function on/off. When you select the prewash function, please add detergent to the prewash compartment of the detergent box.

8 Temp.

This function changes the temperature of the selected program. Each program has a preset temperature. Before starting the program, press this button; the current set temperature will be displayed for the first time. Press again to cycle through the set temperature gears (– indicates cold wash).

The heating temperature that can be set for each program is different.

* Steam

This function can add a steam wash program to the washing process. Before starting the program, press and hold this button. The "" icon will light up, and the "Steam" function will be activated. The same operation can be used to turn off this function.



9 Option

This function selects additional functions for the current program before the program starts. The corresponding icon will light up after the additional function is selected. The additional functions that can be selected for each program are different.

Cold Wash


The additional function uses cold water for washing. It can automatically adjust the washing intensity and water level to achieve energy-saving and environmentally friendly washing performance.

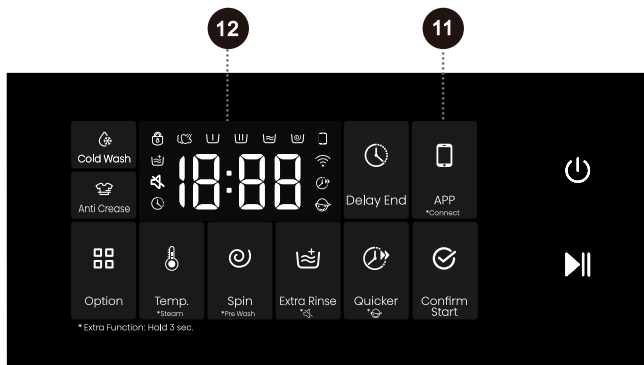
Anti Crease

The additional function is used to turn on the anti-crease mode. After the program ends, the inner drum rotates intermittently to prevent creases from being generated when clothes are not taken out for a long time. When the additional function is turned on, the program automatically enters the anti-crease mode at the end. During the anti-crease function, pressing any button or turning the knob will end this function. If no operation is performed, the program will automatically end after a maximum of 12 hours by default. When the dehydration speed is set to "0", the anti-crease function cannot be set.

10 Delay End


This function allows you to schedule laundry at your convenience.

After selecting the program and function, make a delay end schedule. Press this button, and the reservation icon lights up, allowing you to enter the reservation time settings. Press again to cycle through the preset time gears. Each time you press it, the time changes by 1 hour. The maximum time you can choose is 24 hours. The delay end time is the completed time of the program and includes the entire program operation time, so the delay end time must be greater than the program operation time. After selecting the reservation time, first press the "Start/Pause" button, then press the "Confirm Start" button within 60 seconds to confirm and begin the reservation process. During the schedule process, the " " icon on the display will light up or flash. After the schedule process is completed, the icon will go out. If the Delay End function has been selected before the program starts, it can be canceled by selecting another program or function button. After the program is started, if you need to cancel the Delay End function, you need to shut down and restart.





11 APP

The function activates the APP remote control module of the device.

Short-press the button, the  icon lights up, and the APP remote control module of the device is activated. The same operation can be used to turn off this function.

Before activating the APP function, check and make sure that the Wi-Fi function is turned on and connected normally.

When the Wi-Fi function is turned on and connected normally, and the  icon on the screen is not lit, you can view the status or set the program parameters and function items (depending on the different permissions of the model) through your mobile phone, but you cannot start the program remotely.

When the Wi-Fi function is turned on and connected normally, and the  icon on the screen is lit, you can set the program parameters and function items through your mobile phone, and you can start the program remotely.

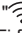
Once the Remote Control is activated, if the door of the appliance is opened at any time before it starts, the remote activation function will be canceled.

You need to enable Remote Control again to remotely start the program.


After turning on the Remote Control mode, if there is no operation on the entire machine and the App for a period of time, it will enter the Energy Saving mode, and it will automatically shut down if there is no operation within 7 days.

After the Remote Control is started, children should be closely monitored to prevent them from crawling into the drum and causing danger.

* Connect

Wi-Fi intelligent control function is supported on this device. Long press this button, the  icon flashes, and the Wi-Fi function is turned on. The same operation can be used to turn off the Wi-Fi function.

Network configuration steps:


1. Press the Power button to turn on the machine.
2. Long-press the ****Connect** button until the  icon flashes and "b0n" is displayed on the screen.
3. Open the APP, and follow the instructions to connect the appliance to the network.
4. If not successful, you can start over from step one.

After the appliance is successfully connected to the network and paired, the Wi-Fi icon stays solid. The remote control module of the appliance is activated, and the appliance can be remotely controlled through the mobile APP.



12 Display

Used to display the remaining time of the program, reservation time, fault code, and other related information.

Icon description

	<p>Door lock indicator icon. When the door lock is locked, this icon lights up. Do not force the door open at this time to avoid causing injury.</p>
---	--

FUNCTION SELECTION TABLE

Program	Temp.	*Steam	Spin	*Pre Wash	Extra Rinse		Quicker		Delay End	Cold Wash	Anti Crease
Power 49'	•	-	•	•	•	•	-	•	•	-	•
Cotton	•	•	•	•	•	•	•	•	•	•	•
Synthetics	•	•	•	•	•	•	•	•	•	•	•
Wool	•	-	•	-	•	•	-	•	•	-	-
Quick 15'	•	-	•	-	•	•	-	•	•	-	•
Drum Clean	-	-	-	-	-	•	-	•	•	-	-
Rinse+Spin	-	-	•	-	•	•	-	•	•	-	•
Spin	-	-	•	-	-	•	-	•	•	-	•
Bedding	•	-	•	•	•	•	-	•	•	•	•
Sportswear	•	-	•	•	•	•	-	•	•	•	•
Delicates	•	-	•	-	•	•	-	•	•	-	-
Allergy Care	-	◦	•	•	•	•	-	•	•	-	•
Auto	•	•	•	•	•	•	-	•	•	-	•
Baby Care	•	◦	•	•	•	•	•	•	•	-	•
Down	•	-	•	-	•	•	-	•	•	-	•
Pet	•	•	•	•	•	•	-	•	•	•	•

- The function is optional
- The function is not optional
- Function default and cannot be canceled

SMART NETWORKING

Enter the "Settings" interface of your smartphone or tablet PC, enable Bluetooth and wireless connections, and connect to a wireless network.

Note:

This appliance supports 2.4 GHz Wi-Fi.

When the Wi-Fi function is activated, the energy consumption of the appliance will increase. However, the Wi-Fi power is less than 2W, so it has no impact on the energy efficiency rating of the appliance.

Download

In the app store on your smartphone or tablet PC (Google Play Store or Apple App Store), you can find the ConnectLife application, download and install it.

Note:

To improve performance and experience, the application may be updated without notice.

Log in

You need to log in to ConnectLife with your account first. If you don't have a ConnectLife account, you need to create a new account. Please refer to the application usage instructions for details.

Note:




If you already have a Google account, you can use your Google account to log in directly.

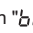
Device Binding


1. Open ConnectLife on your smartphone or tablet PC.
2. Bind your appliance on ConnectLife as follows:
 - A. Click "+" on the "Home" interface, and select "Add device" or "Scan".
 - B. Select "Washing Machine" or click "Scan QR/BAR code" or "Manual entry" below.
 - C. Scan the "QR/BAR code" on the appliance or manually enter the "AUID/SN" of the appliance. If you can't find it, click "(?)" to view instructions.
 - D. Click "SET UP APPLICATION".
 - E. Read the instructions and operate the appliance until it reaches "Networking" or "Binding" state, then click "NEXT".
 - F. At this time, APP begins searching for devices. You can select the device you want to connect to the network from the search list; if no device is found, please check whether your Bluetooth is turned on. Please keep Bluetooth turned on at all times, and click "NEXT".
 - G. Select your home Wi-Fi, enter the password, and then click "CONNECT". The device starts networking and binding.
 - H. After the binding is successful, you can set the device name and room.
 - I. Now you can remotely control the device through the APP.

Note:

How to reset Wi-Fi and unbind all devices?

1. Turn on the device power and make sure the " icon lights up or blinks.
2. Long press the Spin + Quicker buttons until the screen displays " - .
3. Power off and restart the device to perform the new binding.
4. After unbinding, you must restart the device; otherwise, the next binding will fail. Unbinding will delete the user information previously stored in the device.
5. How to exit the network pairing mode?

If you want to cancel the network connection when " Done" is displayed on the screen, no operation is required, and it will automatically exit after the timeout.

 Some models do not support unbinding on the device; unbinding can be done through the APP.


START THE PROGRAM

Select the program and additional functions, and confirm that the detergent has been added to the detergent drawer. First, press the "Start/Pause" button, then press the "Confirm Start" button within 60 seconds to start the program.



After pressing the "Start/Pause" and "Confirm Start" keys, other settings cannot be changed except turning Child Lock on/off, turning Mute on/off (if available), and adjusting Water Level (if available).

When the program starts, if the display shows "---", it indicates that the clothes are being weighed.

 Some programs automatically detect the weight of clothes before washing, and the program duration will be automatically adjusted.

END OF THE PROGRAM

When the program finishes, the device emits an acoustic signal and "End" appears in the display. If you do not perform any operation for a period of time, the device will automatically shut down.

1. Turn off the device power.
2. Turn off the water tap.
3. Unplug the power cord from the outlet.
4. Open the machine door.
5. Remove the clothes from the drum.

PROGRAM INTERRUPTIONS AND CHANGES

Cancel program

To cancel a program while it is running, you need to turn off the device power.

Change program

If you want to change the program while it is running, you need to turn off the power of the device first; After powering on, reselect the program and additional functions, press the **"Start/Pause"** button, and press the **"Confirm Start"** button within 60 seconds to confirm and start the program.

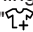
Pause the program

You can press the **"Start/Pause"** button to pause the program at any time during the program operation. When the remaining program time on the display flashes, the program is paused. If the following conditions are met, the door lock is unlocked and the machine door can be opened.

1. The temperature in the drum must be suitable;
2. The water level in the drum must be below a specific value.

To resume the program, first close the door, then press the **"Start/Pause"** button, and press the **"Confirm Start"** button within 60 seconds to confirm and start the program. The wash program is paused and started again, and the program continues from where it was interrupted. The spin program is paused and restarted, and the program starts from the beginning of the spin cycle.

Add Clothes

If you need to add clothes during the program, after confirming that the water level and temperature in the machine are safe, press the **"Start/Pause"** button to pause the program. The remaining program time on the display will flash, and the door lock icon will go out (the **"Add Clothes"** icon  will light up for some models), and then you can open the door to add clothes. If the door lock icon does not go out, the door opening conditions are not met and you cannot add clothes.


Fault

If the device fails, the program will be interrupted.

If this happens (see **"FAULT CODES AND TROUBLESHOOTING"**), the device will sound an alarm and the fault code (FXX) will appear on the display.

Power failure

In the event of a power failure (blackout), the washing program will be interrupted. When the power supply is restored, the program will continue running from the stage where it was interrupted.

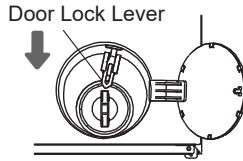
 **If there is still water in the appliance after a power outage, do not open the door before manually draining the water using the drain pump filter.**

EMERGENCY DOOR OPENING


If the door cannot be opened due to special reasons such as power failure, please use the door lock lever at the door cover of the pump to open the door urgently.


 Note:

1. Please do not use this function when the device is operating normally.
2. Before operation, make sure that the inner drum has stopped rotating, that the water temperature is not high and that the water level is below the feeding port to avoid danger. If the water level is too high, drain the water through the drain hose (if any) or by slowly unscrewing the drain pump filter.
3. Operation method: Open the door cover of the drain pump, use the tool to pull down the door lock lever, and then open the door (as shown in the figure). After opening the door, please restore the door lock lever in time.



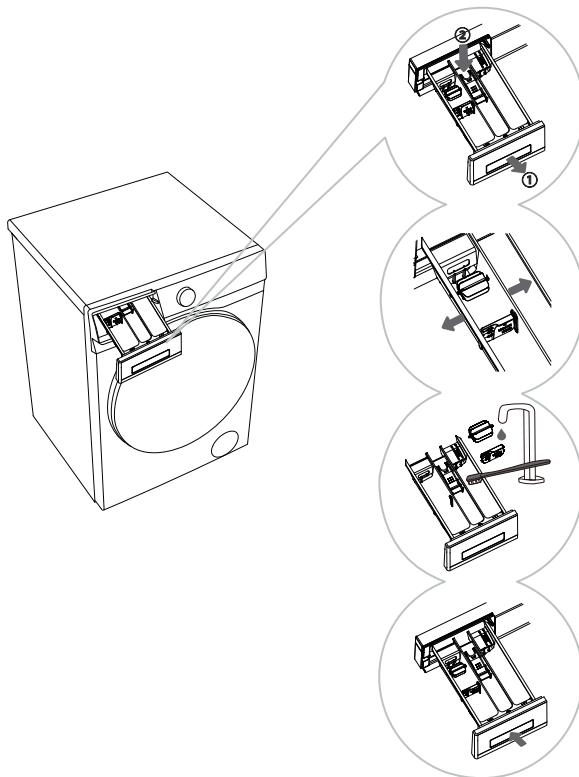
MAINTENANCE AND CLEANING

 Regular maintenance can extend the appliance's service life. Before maintenance, please be sure to cut off the power supply and turn off the faucet.

 Children are not allowed to clean or perform any maintenance work on this device without supervision.

CLEANING THE DETERGENT DRAWER

 Clean the detergent drawer regularly.




1 Pull out the detergent drawer. Press the small tab in the detergent drawer to pull out the detergent drawer. (See the position indicated by the arrow in the left figure.)

2 Gently bend the main wash compartment of the detergent drawer by hand to slightly deform it, and remove the baffle and roller.

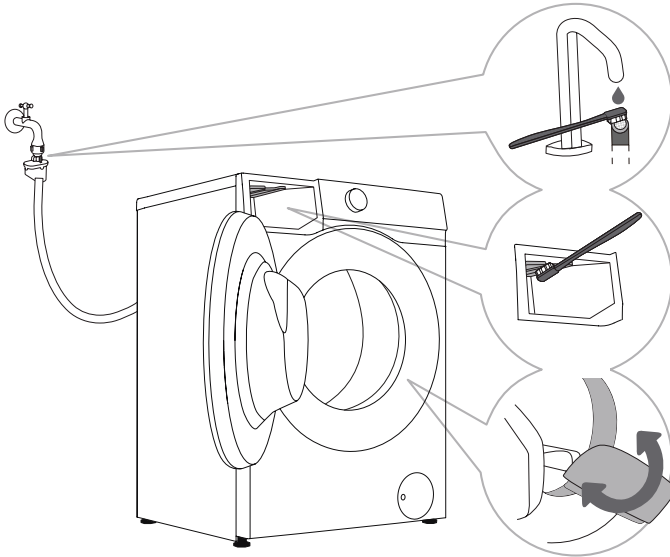
3 Use a brush to clean the baffle, roller, and detergent drawer separately.

4 Clean any remaining detergent from the bottom of the detergent drawer and wipe it dry. After wiping the baffle and roller dry, reinstall them in their original positions and reinstall the detergent drawer into place.

 When installing the roller, make sure that the positioning posts at both ends of the roller match the positioning holes of the detergent drawer.

 Do not place the detergent box in the dishwasher for cleaning.

CLEANING THE WATER INLET HOSE, DETERGENT DRAWER OUTER COMPARTMENT, AND RUBBER DOOR GASKET




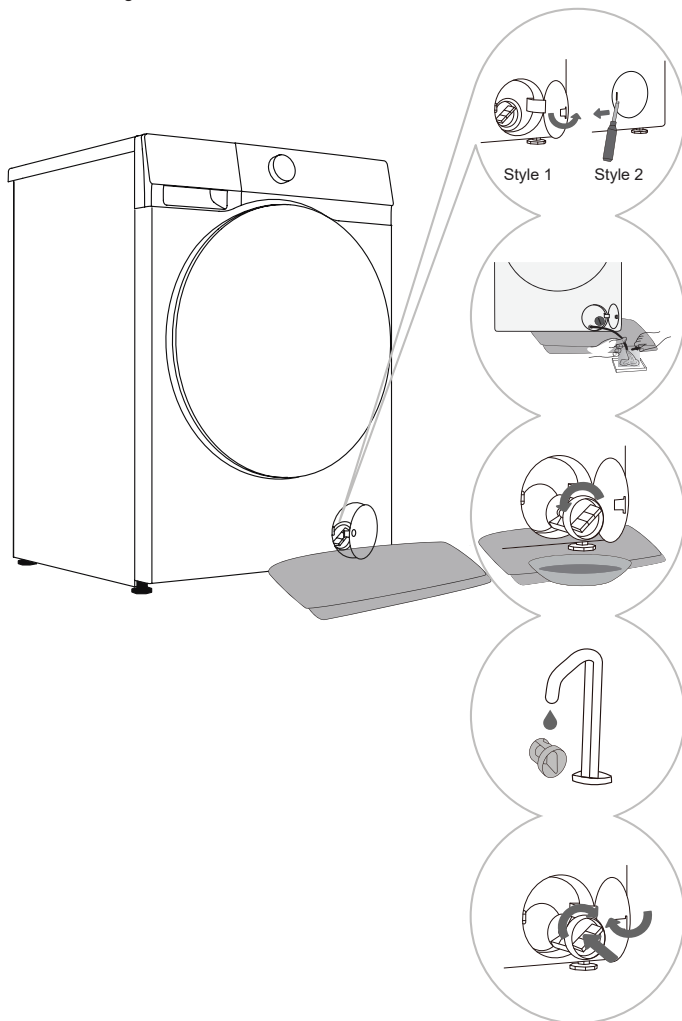
1 Clean the water inlet hose filter regularly.

2 Use a brush to clean the detergent drawer outer compartment, especially the nozzle on the upper side of the compartment.

3 After each wash, wipe the rubber door gasket to extend its life. After washing, keep the appliance door slightly open to release moisture before closing it, to prevent the door seal from getting moldy.

CLEANING THE PUMP FILTER

 When cleaning the pump filter, water may spill out. Therefore, it is recommended to place an absorbent cloth on the floor. Before draining the water, make sure the water has cooled down.




1 Open the drain pump filter cover. Style 1: Press the door cover; the filter cover pops out; Style 2: Use the appropriate tool (flat head screwdriver or a similar tool) to open the drain pump filter cover. (The style depends on different models.)


2 Place a towel under the filter door. If the device has a discharge pipe, place the discharge pipe end into a container, rotate the discharge pipe plug, remove it after it loosens, wait until the water drains out naturally, and reinstall the discharge pipe plug. If the device does not have a discharge pipe, place a container under the pump filter. (The style depends on different models.)


3 Slowly turn the pump filter counterclockwise. Pull out the pump filter to allow water to drain slowly.


4 Clean the pump filter with tap water.

5 Reinstall the pump filter as shown in the illustration, and tighten it clockwise. To ensure a good seal, the filter sealing ring surface should be kept clean.

 It is recommended to clean the drain pump filter every two months.

 It is recommended to clean the drain pump filter every time you wash items such as quilts and bath towels that are prone to shedding.

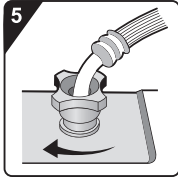
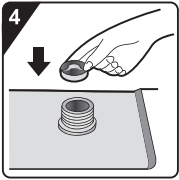
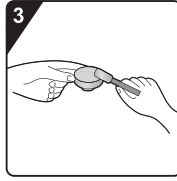
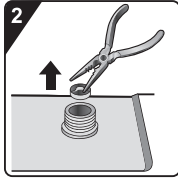
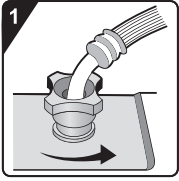
 If the spin program cannot start or there is debris (buttons, coins, hairpins, etc.) in the drain pump, clean the pump filter.

 Do not open the pump filter while the device is in operation. Do not operate the device before the pump filter is installed in place to avoid water leakage or malfunction.

CLEANING THE INLET FILTER

Check and clean the inlet filter regularly.

If the water inlet speed is slow, please clean the filter at the water inlet in time. The specific steps are as follows:




1 Turn off the water tap and loosen the water inlet hose.

2 Remove the inlet filter.


3 Clean the inlet filter.

4 Install the inlet filter.


5 Connect the water inlet hose. Turn on the water tap and make sure there are no leaks at the connections.


 The inlet filter collects impurities and sediment in the water supply of the equipment. It is recommended to clean the inlet filter at least once every six months. If the water is hard or there are limescale deposits, the filter should be cleaned more frequently.

CLEANING THE OUTSIDE OF YOUR WASHER

 Before cleaning the outside of your washer, please be sure to disconnect the machine from the power supply.

Clean the appliance housing and control panel with a soft, damp cloth. Then wipe them dry with a soft dry cloth.

 Do not use solvents, abrasive cleaners, or cleaning agents that may damage the device (please follow the recommendations and warnings provided by the cleaning agent manufacturer). Wipe the drum door with a damp cloth, and then wipe it dry with a soft dry cloth.

 If cleaning with a wet towel, make sure to ring out the water from the towel before wiping down the washer.

TROUBLESHOOTING

The device is equipped with various automatic safety functions, ensuring that faults can be detected promptly and effective safety countermeasures can be initiated.


These faults are usually minor and can be eliminated in a very short time.

When the device cannot operate normally, the display will show abnormal information. Please refer to the warning content and take appropriate actions.

If the fault persists after you have handled it yourself according to the recommended processing method, please contact after-sales service.

If the user performs maintenance by themselves or hires non-manufacturer after-sales personnel, all consequences will be assumed by the user.

Fault Description	Recommended handling methods
<p>The device cannot start normally</p>	<ul style="list-style-type: none"> ◇ Check whether the device power supply is plugged into the power socket, and whether the power socket is working properly (you can test the power socket with other electrical devices). ◇ Check if the machine door is closed properly. ◇ Confirm whether the "Start/Pause" button and the "Confirm Start" button have been pressed effectively.
<p>The device stops operating under normal working conditions</p>	<ul style="list-style-type: none"> ◇ Check if the machine door is closed properly. ◇ Check for excessive foam. When the device detects excessive foam, it will enter a draining or standby state, or water will be taken to eliminate foam for defoaming treatment. The program is paused during this process, and the time displayed on the screen remains unchanged. After defoaming is completed, the device will automatically resume operation. If foam overflows and leaks, wipe away the foam to prevent corrosion of the device. ◇ Check if the device has activated the alarm protection.
<p>The time at which the program starts displaying may be extended or shortened by a certain duration</p>	<p>This is an adaptive adjustment made by the device in response to factors affecting the washing time.</p> <ul style="list-style-type: none"> ◇ Excessive foam. ◇ Bulky clothing causes imbalance. ◇ The low inlet water temperature causes the heating time to be prolonged. <p>Due to the above reasons, the remaining time displayed by the program will be recalculated and updated in a timely manner (when the device is making imbalance adjustments, the displayed time remains unchanged). In addition, during the water intake phase, the device detects the load and adjusts the program time accordingly (fuzzy control).</p>
<p>After washing, there is residual detergent or other additives in the detergent drawer</p>	<ul style="list-style-type: none"> ◇ Check whether the detergent drawer is installed correctly and kept clean. ◇ Check whether the water pressure is normal and whether the filter of the water inlet hose is blocked (refer to "MAINTENANCE AND CLEANING").
<p>The equipment has an odor</p>	<ul style="list-style-type: none"> ◇ The odor may be caused by the rubber material inside the device. This is the smell of the rubber itself and will automatically disappear after a few uses.

 Faults or problems caused by external factors (such as lightning strikes, power grid failures, natural disasters, etc.) are not covered by the warranty.

Fault Description	Recommended handling methods
Abnormal sound/noise occurs during the washing process	<ul style="list-style-type: none"> ◇ A foreign object, such as a key, coin, or pin, may have fallen into the drum. Shut down the equipment and check whether there is any foreign matter in the drum. If there is still abnormal noise after restarting, please contact after-sales service. ◇ The laundry may be unevenly distributed in the drum. Pause the program and redistribute the laundry after unlocking the door.
The equipment vibrates intensely during spinning	<ul style="list-style-type: none"> ◇ Check whether the device is placed level, with the four feet stably supported on a flat surface. ◇ Check that the transport screws have been removed. Before using the equipment, the transport screws must be removed. ◇ Check that all bottom support foam has been removed.
Poor Spin Effect	<p>The device has a balance detection and correction system. If clothes are very heavy (such as bathrobes), the system detects imbalance and, after trying to spin dry multiple times, will automatically reduce the spin speed or even stop spinning to protect the device.</p> <ul style="list-style-type: none"> ◇ If clothes are still very wet after the spin cycle, take them out, shake them out, and select the spin cycle again. ◇ Excessive foam will affect the spin effect. Please use an appropriate amount of low-foaming detergent. ◇ Check whether the speed selection is set to "0" or "No Spin".
Water leakage problem occurs	<ul style="list-style-type: none"> ◇ The water inlet hose is leaking. Check whether the tap and the water inlet hose connector are leaking. If there is leakage, wrap sealing tape around the end of the tap or replace it with a suitable tap. It is recommended to check whether the water inlet hose connector and the water inlet valve port are tightened. After tightening, the leakage will be eliminated. ◇ The drain hose is leaking. For top-drain models, the drain hose fixing clip should not be removed; otherwise, the drainage will not stop. ◇ The detergent drawer is leaking. The detergent drawer is not closed tightly. Please push the handle of the detergent drawer tightly to close it. ◇ The door gasket is leaking. Check the door gasket for any foreign matter and clean it.
Excessive wrinkling	<ul style="list-style-type: none"> ◇ Clothes were not taken out of the machine in time. After the washing program is completed, please take out the clothes from the machine in time. ◇ The device is overloaded. The drum should not be tightly packed with clothing, and the door should close easily. ◇ The spin speed may be too high. Set the appropriate speed for the clothing type.

DRYING MALFUNCTION (applicable to models with drying function)

Fault Description	Recommended handling methods
Appliance not drying	<ul style="list-style-type: none"> ◇ Check if a drying program has been set. ◇ Check whether the water tap is turned off. ◇ Check if the machine door is closed properly. ◇ Check if the load of laundry is excessive (refer to the "PROGRAM TABLE" for the recommended capacity for the selected program). Remove some items and restart the drying cycle.
Insufficient drying	<ul style="list-style-type: none"> ◇ Check if the load of laundry is excessive. Overloading can result in poor drying performance and may cause wrinkles. Dry the load in separate batches. ◇ Check whether clothes that are difficult to dry (such as thick cotton) are mixed with clothes that are easy to dry (such as synthetic fibers). ◇ Dry different types of clothes separately.
Drying time is too long	<ul style="list-style-type: none"> ◇ Check if the load of laundry is excessive (refer to the "PROGRAM TABLE" for the recommended capacity for the selected program). Remove some items and restart the drying cycle. ◇ Insufficient spin of laundry (refer to the "POOR SPIN EFFECT" section for handling). ◇ The load contains many thick items (such as denim).
Odor during drying	<ul style="list-style-type: none"> ◇ The use of detergents or softeners with strong chemical fragrances may cause odors during clothes drying. ◇ If the appliance is not thoroughly cleaned inside, residual dirt may cause odors during clothes drying. Please clean the appliance regularly (refer to "MAINTENANCE AND CLEANING") and promptly remove clothes after the drying cycle ends.

FAULT CODES AND TROUBLESHOOTING

When the device does not operate normally and the display shows the following code, it may not be a fault. Please refer to the content in the fault code and take the corresponding measures.


Problem/ Fault	Description	Solution
F01	Water inlet fault	<p>Check the following items:</p> <ol style="list-style-type: none"> 1. Is the water tap open? Is the water pressure too low? 2. Is the water inlet hose pinched? 3. Is the water inlet hose filter clogged? 4. Is the water inlet hose frozen? <p>After troubleshooting, press the "Start/Pause" button, then press the "Confirm Start" button within 60 seconds to confirm and continue operation.</p>
F03	Water outlet fault	<p>Check the following items:</p> <ol style="list-style-type: none"> 1. Is the drain hose pinched? Is there water flowing in the hose? 2. Is the drain hose filter clogged? 3. Is the drain hose frozen? <p>After troubleshooting, press the "Start/Pause" button, then press the "Confirm Start" button within 60 seconds to confirm and continue operation.</p>
F24	Overflow	<p>Pause the program first, press the "Start/Pause" button, and press the "Confirm Start" button within 60 seconds to confirm and start the program.</p> <p>If the device continues to overflow, please turn off the tap and contact a service technician.</p>
F13	Door locking fault	<p>The appliance door is closed but cannot be locked.</p> <p>First, turn off the machine, then turn it on. Press the "Start/Pause" button, and press the "Confirm Start" button within 60 seconds to confirm and start the program.</p> <p>If the fault still exists, please contact a service technician.</p>
F14	Door unlocking fault	<p>The appliance door is closed but cannot be locked.</p> <p>Turn off the machine first, then turn it on. If the fault still exists, please contact a service technician.</p>
Other	Electronic module fault	<p>Turn off the machine, then turn it on;</p> <p>Press the "Start/Pause" button, then press the "Confirm Start" button within 60 seconds to confirm and start the program.</p> <p>If the fault still exists, please contact a service technician.</p>
Unb	Unbalance alarm	<p>To clear the unbalance alarm, follow these steps:</p> <ol style="list-style-type: none"> 1. Entangled laundry <p>If the laundry is tangled together, first turn off the machine, open the door, and loosen clothes. Then, place them back into the drum, close the door, and select the separate "Spin" program to try again.</p> <ol style="list-style-type: none"> 2. Insufficient laundry weight <p>Turn off the machine, open the door, and add more clothes (or add one or two towels). Close the door, and select the separate "Spin" program to try again.</p>
F15-F18	Drying abnormality (applicable to models with drying function)	<p>Turn the appliance off and then turn it on.</p> <p>If the fault still exists, please contact a service technician.</p>


SERVICING

BEFORE CALLING MAINTENANCE PERSONNEL

When you contact the service center, please first state your device model.

Information such as model number, code/ID, model type, and serial number are displayed on the nameplate of the device.

 In case of defects, only use spare parts approved by the authorized manufacturer.

 Repairs or any warranty claims resulting from incorrect connection or use of the device are not covered by the warranty. In this case, the maintenance costs shall be borne by the user.

USAGE RECOMMENDATIONS

When washing colored clothes for the first time, separate them by color.

When washing heavily soiled clothes, load fewer clothes each time and use more powder detergent or select the prewash function (if available).

Before starting the wash, apply a special stain remover to stubborn stains. Refer to "RECOMMENDATIONS FOR SPECIFIC STAIN REMOVAL".

If you frequently wash clothes with cold water and liquid detergent, the appliance may develop bacteria, resulting in unpleasant odors. We recommend running the "Drum Clean" (or other high-temperature) program periodically to clean the drum.

Avoid washing very small loads to prevent energy waste and poor cleaning results.

Shake out clothes that are folded or tangled together before putting them into the drum.

Use detergents specifically designed for machine washing.

If the water hardness exceeds 14°dH, use a water softener. Damage to the heater caused by improper use of water softeners is not covered by the warranty. Consult your local water supplier for water hardness information.

The use of chlorine-containing bleach is not recommended, as it may damage the heater.

If using descaling agents, bleaches, or colorants, ensure they are suitable for this washing machine.

Do not use solvents or similar chemicals (such as paint thinner, turpentine, gasoline, etc.).

Do not put hardened powder detergent into the detergent dispenser, as this may clog the internal hoses of the appliance.

Powder or liquid detergents should be added according to the manufacturer's instructions, the wash temperature, and the selected washing program.

When using thick liquid fabric care products, it is recommended to dilute them with water to prevent clogging the detergent drawer drainage outlet.

Liquid detergents are suitable for washing programs without a prewash cycle.

Be careful not to confuse detergent and softener.

The higher the spin speed, the less moisture remains in the clothes. Therefore, using an appliance with a drying function is more economical and efficient for drying clothes.

RECOMMENDATIONS FOR SPECIFIC STAIN REMOVAL

Before using specialty stain removers, try natural, environmentally friendly methods to remove lighter, stubborn stains. It is easier to remove stains if you treat them promptly!

Please wash with cold water (warm water) according to the following stain removal methods. Do not use hot water!

Stain type	Stain removal method
Mud	<p>If the stain is dried mud, first scrape it off the garment, then put it into the machine for washing.</p> <p>For stubborn stains, soak the garment first in an enzyme-based stain remover before washing.</p> <p>For less stubborn stains, pre-treat the garment with liquid or powder detergent manually before washing.</p>
Antiperspirant	<p>Before placing the garment in the machine for washing, apply liquid detergent directly to the stains.</p> <p>For stubborn stains, use a stain remover for treatment. or wash with an oxygen bleach.</p>
Tea	Soak or wash the garment in cold water. Add the stain remover if necessary.
Chocolate	Soak or wash the garment in warm soapy water, then apply lemon juice and rinse.
Ink	Before starting the wash, apply a stain remover to stains. You may also use the denatured alcohol, turn the garment inside out and place a tissue paper under the stain, apply alcohol from the back side of the garment, then wash the garment thoroughly after treatment.
Marker pen writing	Dilute some starch with water, then apply it to the stain. After it dries, brush it off with a brush; then, put the garment into the machine for washing.
Baby stains (urine, mud, or food)	Soak the stained area in warm water for at least half an hour before putting the garment into the machine for washing. To make it easier to remove stains, an enzyme-based detergent can be added.
Grass	Before putting the garment into the washing machine, soak them in an enzyme-based detergent first. You can also soak it in diluted lemon juice or white vinegar (for about 1 hour) to remove grass stains.
Egg	Soak the garment in an enzyme-based detergent. Soak it in cold water for at least 30 minutes. If the stain is stubborn, you can soak it for several hours. Then, put the garment into the machine for washing.
Coffee	Soak the garment in salt water. For older stains, you can soak it with a mixture of castor oil, ammonia, and alcohol.
Shoe polish	Apply edible oil to the stain, then wash the garment.

Stain type	Stain removal method
Blood	For fresh blood stains, first rinse the garment with cold water, then put it into the machine for washing. For dried blood stains, soak the garment in an enzyme-based detergent. Then, put the garment into the machine for washing. If the stain remains, consider using a bleach product suitable for the fabric type.
Glue or chewing gum	Put the garment in a bag, then place it in the refrigerator until the stains harden. Scrape it off with a dull knife. Dilute the stain with a prewash stain remover and wash thoroughly. Finally, put the garment into the machine for washing.
Makeup	Use a stain remover to pre-wash, then put the garment into the machine for washing.
Butter	Before putting the garment in the washing machine, apply a stain remover to the stains. Then wash with hot water (temperature permitted by the garment).
Milk	Soak the garment in an enzyme-based detergent. Soak the garment for at least 30 minutes. If the stain is stubborn, you can soak it for several hours. Then, put the garment into the machine for washing.
Juice	Apply salt water to the stains. Leave it for a short while, then wash. Alternatively, before putting the garment in the washing machine, apply baking soda, white vinegar, or lemon juice to the stains. For old stains, apply castor oil to the stains, and rinse with cold water after 20 minutes. Finally, put the garment into the machine for washing.
Wine	Soak the garment in cold water for at least 30 minutes. Use the detergent at the same time. Then, put the garment into the machine for washing.
Wax	Put the garment in the refrigerator until the wax stains harden. Then scrape it off. Place a piece of paper towel over the stain, then iron on top until the paper towel absorbs the remaining wax.
Sweat	Before placing the garment in the machine for washing, apply liquid detergent directly to the stain.
Chewing gum	Put the garment in the refrigerator until the chewing gum harden, then scrape it off. Then, put the garment into the machine for washing.

DISPOSAL



The packaging is made of environmentally friendly materials and can be recycled, reused, processed, or destroyed without causing harm to the environment. For this purpose, the packaging materials are marked with appropriate labels.

This icon on the product or its packaging indicates that this product cannot be disposed of as household waste. Please dispose of this product at a collection point for the recycling of electrical and electronic equipment.

When the device reaches the end of its life and needs to be scrapped, please remove all power cords, destroy door locks and switches to prevent the doors from locking. This is to avoid the risk of children or small animals becoming trapped inside.

The labeling of the appliance complies with the provisions of the European WEEE Directive.

Ensure this product is handled correctly and avoid inappropriate waste disposal measures for this product, as this helps prevent potential negative impacts on the environment and human health. For more information on product recycling, please contact your local municipal department, your household waste disposal service center, or the store where you purchased the product.

Hisense
life reimagined

20206444-N6020017744A