

READ AND SAVE THIS GUIDE

**WARNING!**

Read Safety Guide. Failure to follow all guides and rules could cause personal injury or property damage. When using this appliance, always exercise basic safety precautions including the following:

- To avoid hazard due to instability of the appliance, it must be fixed in accordance with installation instructions.
- Ensure the installer has completed the final checklist in the installation guide.
- This appliance must be installed in accordance with the installation instructions before use.
- Stacking kit is only designed for house hold applications.
- Children should be supervised to ensure they do not play with the stacking kit.
- Do not swing on the stacking kits shelf.
- Appliances are heavy, we recommend 2 persons to move and install the appliance.

**STACKING KIT**

- This stacking kit can only be installed with compatible Fisher & Paykel appliances.
- To ensure stability, the stacking kit must be fitted correctly with the appliance.
- For further installation instructions and compatible appliance models, go to [fisherpaykel.com/specify](http://fisherpaykel.com/specify) and search by product name or model.

**⚠ WARNING!**



**Tip Hazard**

- This product may tip. Keep children away and take care. Failure to follow this advice may result in injury.
- This appliance is top-heavy and must be secured to prevent the possibility of tipping forward.

**INSTALL STACKING KIT TO WASHER**



1. Remove screws from washer using a screw driver or drill on the lowest torque setting.

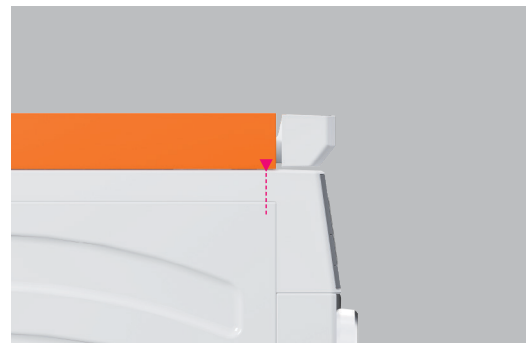


3. Screw the brackets into place using a screw driver or drill on the lowest torque setting.

⚠ WARNING: Failure to tighten screws could create a tipping hazard.



2. Fit Brackets onto the rear of the washer.



4. Place the stacking kit over the brackets. To ensure correct alignment, the FRONT arrow on the stacking kit should line up between the console and the top panel.



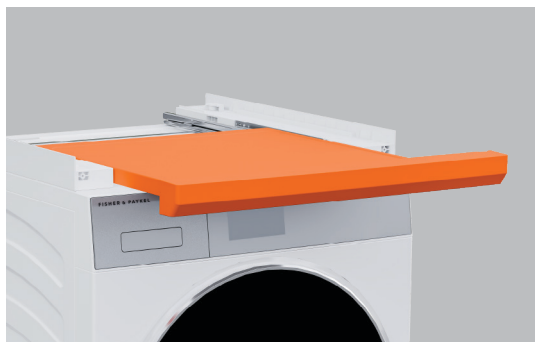
5. Ensure the stacking kit is centred to the washer. Peel off the VHB backing tabs and press down to secure the front of the stacking kit in place.



6. Fit two screws between the stacking kit and the brackets to secure the back of the stacking kit in place. Screw positions differ depending on the washer/ dryer variant.

**⚠️ WARNING:** Failure to tighten screws could create a tipping hazard.

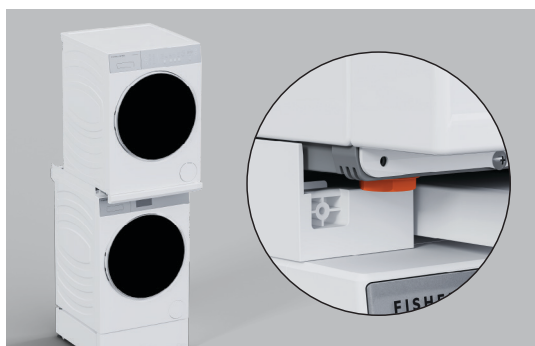
INSTALL DRYER TO STACKING KIT



1. Push the front of stacking kit so stacking kit tray is partially open.



3. Remove the screw from the front of the dryer then fit front brackets.



2. Lift the dryer over the stacking kit and slide the dryer back until it stops. Ensure the front dryer feet do not catch on the front edge of the stacking kit and the dryer remains centred on the stacking kit.



4. Re-fit screw to the dryer, and use supplied screw to secure brackets to stacking kit. Push the front of the stacking kit to close the tray.

**⚠️ WARNING:** Failure to tighten screws could create a tipping hazard.