



WIRELESS RV LEVELING SYSTEM



User Manual

Copyright © 2026 Carmtek

Product Information:



Product: Wireless RV Leveling System

Trademark: CARMTEK

Model No: CTK-WLS-2601

Compatibility: Works With All RV Types

Warranty: Lifetime Warranty

For lifetime warranty information or claims, please visit www.carmtek.com



Designed in US 

For the American RV Adventures



Contact Us:

email: support@carmtek.com

web: <https://www.carmtek.com>



Installing the unit

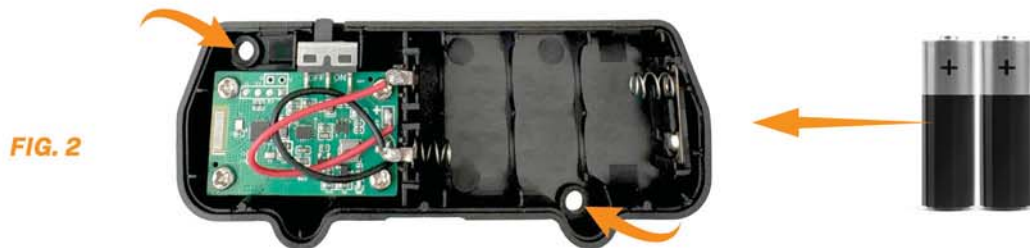


● **Remove the Front Cover** - Before installation, the front cover of the device must be removed to access the mounting holes. To remove it, place your finger in the indicated position and gently pull the front cover outward, as shown in Fig 1. The cover will detach from the main housing, exposing the bottom section that contains the battery compartment and wall-mount screw holes.



● **Mount the Base to the Wall** - Position the bottom housing (the section that holds the batteries) against the wall where you plan to install the unit and use the two provided screws to secure the unit to the wall through the mounting holes as shown in Fig 2.

If you prefer not to drill holes into your RV wall, you may use 3M adhesive as an alternative mounting method. Try to mount the unit flat against the wall. It does not need to be perfectly level.



● **Install the Batteries** - Insert two AA batteries, making sure the polarity (+/-) is correct as shown in Fig 2. (NOTE - batteries are NOT included).

● **Turn On the Device** - Switch the power button to the “ON” position as shown in Fig 3.

A small red LED located on the circuit board, within the red circle shown in Figure 3, will blink intermittently to indicate that the unit is powered on.



● **Reattach the Front Cover** - To reinstall the front cover, align it with the bottom housing and push the cover firmly onto the base until it snaps into place.

Important Installation Tips



● **Install Near the Driver's Seat** - For optimal wireless performance, position the device as close as possible to the driver's seat of your RV or truck.

Avoid placing large objects such as cabinets or appliances between the leveler unit and the driver's seat, as these may interfere with the signal. Installing the unit near a window can also help improve connectivity.

● **Test Before Final Installation** - Before permanently mounting the device, test the connection in several locations to determine the best placement. While the unit has strong wireless capability, signal performance may vary depending on the layout and materials of your RV. In many cases, installing the device in an external storage compartment provides the best results.

● **Mount as Level as Possible** - Install the device as level as possible on the wall. However, perfect leveling is not required, as the unit will be recalibrated during the setup process.

Pair with Your Phone

● **Download the Mobile App** - Download the app from the Google Play Store or the Apple App Store. The app is called "**CARMTEK Wireless Leveling System**" and is available for free.

Scan the QR code or visit the product page directly on our website:

<https://www.carmtek.com/wireless-leveling-system>

Scan me



● **Power On the Device** - Ensure the device has batteries installed and the power switch is in the "ON" position.

● **Start the Setup Process** - Open the app and follow the on-screen instructions to begin setup.

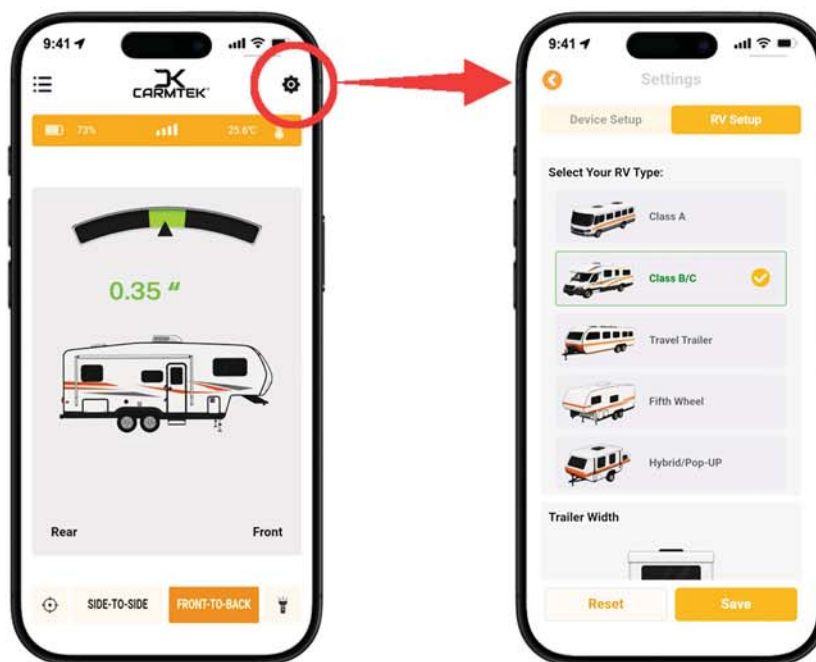
Application Setup



It is not necessary to enter all information correctly during the initial setup. You can update or adjust settings at any time within the app.

RV Setup:

- **Open Settings** - Tap the gear icon in the top-right corner of the app to access settings.
- **Select Your RV Type** - Selecting your RV type does not affect measurement accuracy, but it will provide a more accurate visual representation of your RV.

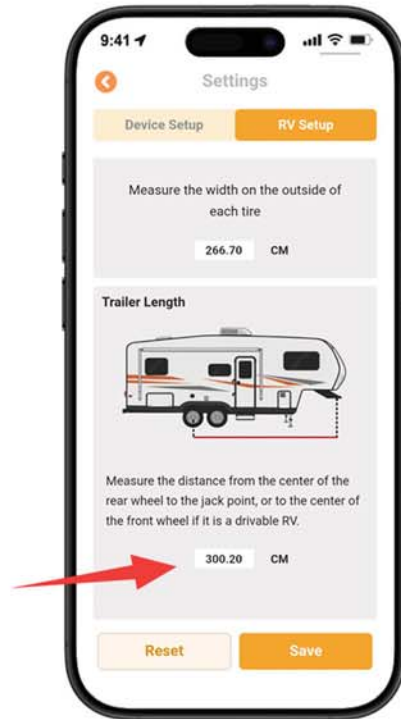
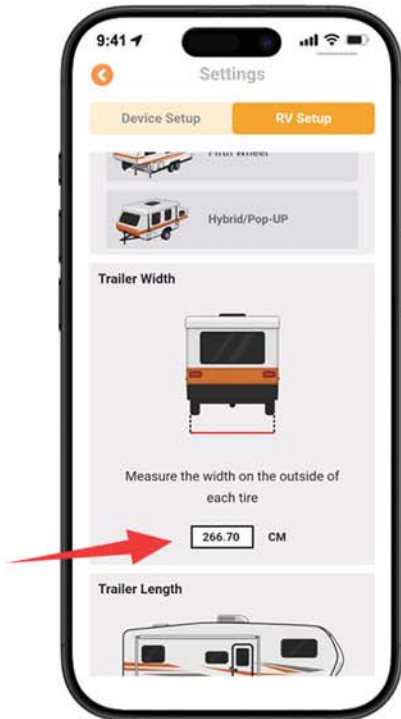


Vehicle Measurements

These settings are critical to the accuracy of the leveling measurements.

- Within “Trailer Settings”, scroll down to Trailer Width and Trailer Length.
- **Trailer Width** - Measure the distance between the outer edges of the tires (from outside to outside). Enter this measurement in the corresponding field.
- **Trailer Length:**
 - Travel Trailer: Measure the distance from the center of the rear wheel to the jack.
 - Drivable RV (Class A, B, C): Measure the distance from the center of the rear wheel to the center of the front wheel.
- Enter the measurement in the appropriate field.
- **Save Settings** - Tap the “Save” button to apply your measurements.

Application Setup

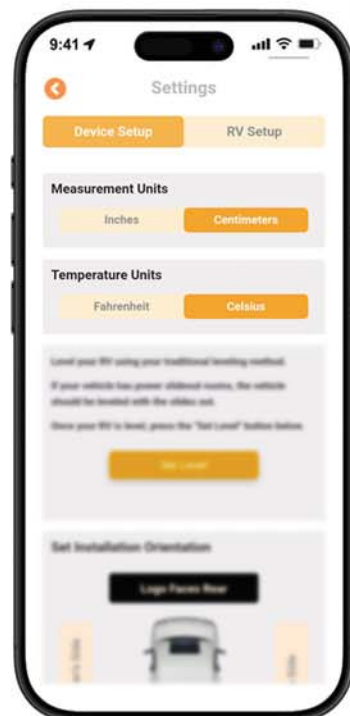


Device Setup:

• Set Measurement & Temperature Units

Within "Device Setup", select your preferred units:

- Measurement: centimeters (cm) or inches (in)
- Temperature: Celsius (°C) or Fahrenheit (°F)



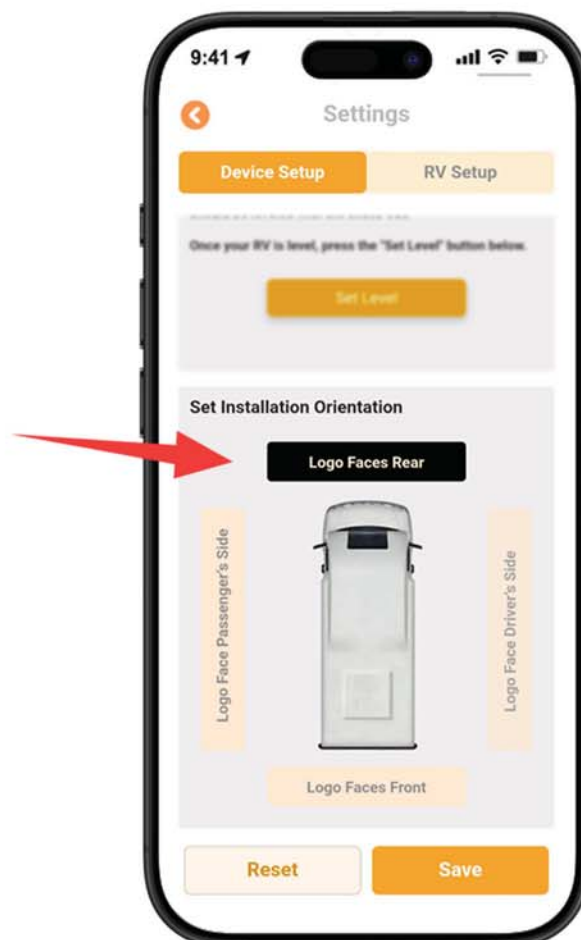
● Set Unit Installation Location

Within “Device Setup”, scroll down to Set Installation Orientation.

Select the orientation based on the direction the unit logo is facing after installation:

- If the unit is installed on the driver-side wall and the logo faces the passenger side, select “Facing Passenger Side.”
- If the unit is installed on a cabinet along the passenger side, but the logo faces the rear of the RV, select “Facing Rear.”

After making the correct selection, tap the “Save” button.



Application Setup



● Set Your Trailer as Level

This step must be completed before using the unit at a campground.

This process calibrates the device to recognize what is considered perfectly level.

Calibration Procedure:

1. Ensure the device is properly installed on your RV wall. If not, refer to the installation instructions before proceeding.
2. Park your RV on level ground. Use a bubble level or other leveling tools to confirm the RV is level both side-to-side and front-to-back.
3. Open Device Setup and tap the “Set Level” button. When prompted, confirm by tapping “Set Level” again.
4. Return to the leveling screen. Both Side-to-Side and Front-to-Back should read 0.00°, indicating successful calibration.

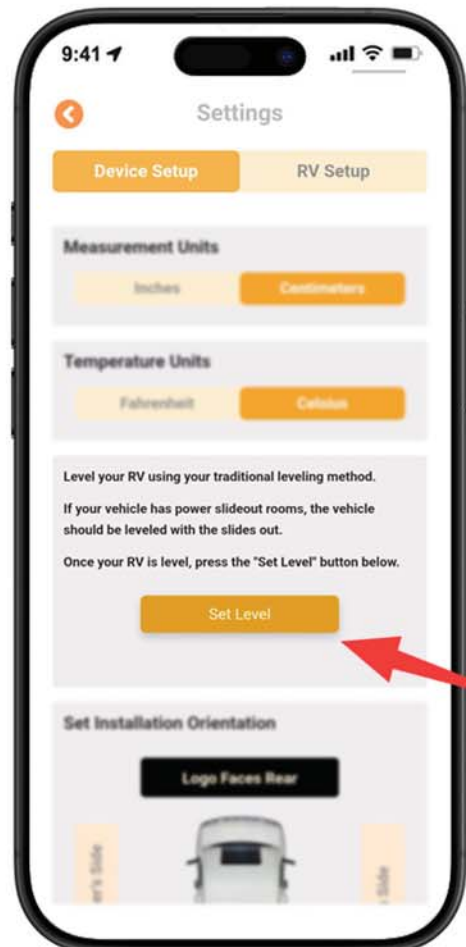
IMPORTANT:

Use the “Set Level” function with caution.

If you press this button while the RV is not level, the device will incorrectly store that position as level.

Tips:

In most cases, this calibration only needs to be performed once during initial setup. However, you can recalibrate at any time through the settings if needed.



Using the Application



● Leveling Screen Overview

There are two main leveling screens:

- Side-to-Side (Roll)
- Front-to-Back (Pitch)

Each screen includes a gauge, measurement value and a vehicle image. These elements work together to make the leveling process simple and intuitive.

The pointer, scale, and vehicle image update in real time to reflect the current level of your RV.

● Color Indicators

The system uses three color zones to indicate how level your RV is:

- Red: More than 3 inches from level
- Yellow: Between 1 and 3 inches from level
- Green: Within 1 inch of level

● Side-to-Side (Roll)

- Measures leveling from Side-to-Side
- Gauge arrows:
 - Arrow on the right side = Passenger Side Low
 - Arrow on the left side = Driver Side Low
- The vehicle image shows a rear view of the RV:
 - Driver's side appears on the left



● Front-to-Back (Pitch)

- Measures leveling from Front to Back
- Gauge arrows:
 - Arrow on the left side = Front High
 - Arrow on the right side = Front Low



Leveling Your RV



Once your device is installed and set up, you are ready to level your RV using the app.

• Step 1: Position Your RV at the Campsite

When you arrive at your campsite, open the app and check both the Roll and Pitch screens.

Some campsites are level, while others may have uneven surfaces.

Try to position your RV on the most level area available to minimize adjustments.

• Step 2: Level Side-to-Side (Roll)

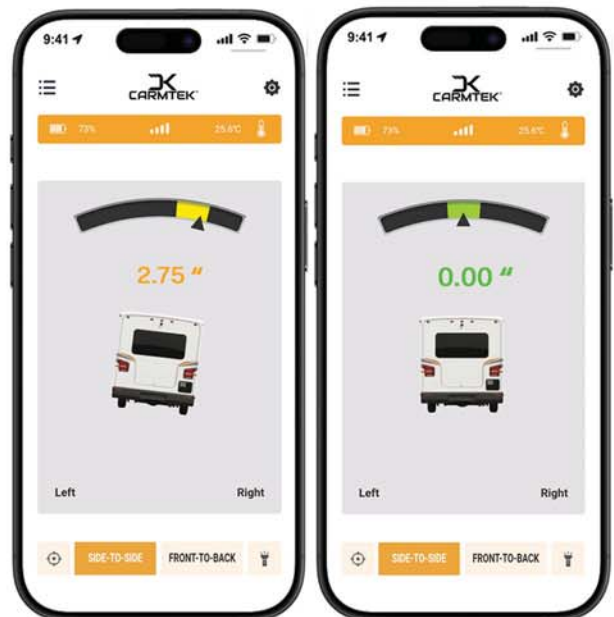
a. Open the Side-to-Side screen and check the measurement.

▪ In this example: "Passenger Side Low – 2.75"

b. Place leveling ramps under the lower-side tires (in this case, the passenger side), and slowly drive onto the ramps.

The measurement will move closer to 0.00" in real time.

c. Once the reading is as close to 0.00" as possible,



• Step 3: Level Front-to-Back (Pitch)

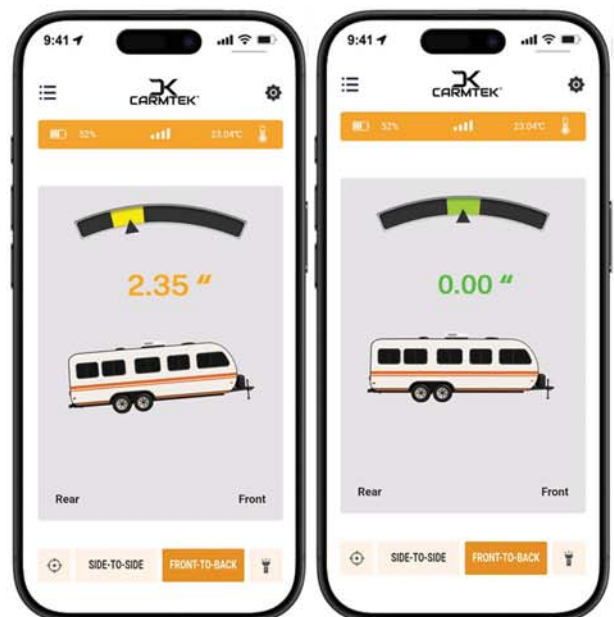
a. Once the RV is level side-to-side, open the Front-to-Back screen and check the measurement.

b. Use the tongue jack to raise or lower the front of the RV.

The measurement will move closer to 0.00" in real time.

c. Adjust until the reading is as close to 0.00" as possible.

d. Your RV is now level side-to-side and front-to-back.



● Device Not Connecting

If you are having trouble connecting the device to your phone, follow these steps:

1. Check Batteries - Ensure the batteries are installed correctly and are fresh. Replace them if necessary.

2. Enable Location Services (Android Only) - Make sure Location Services are turned on. Some Android devices require this setting enabled for Bluetooth connections.

3. Check Wireless Range - Ensure your phone is within range of the device. Move closer to the unit and refresh the app to see if it appears. While the device has a strong wireless signal, distance and obstructions can still affect connectivity.

4. Check for Existing Connections - If the device is already connected to another phone, it will not appear as available. Make sure the app is closed on any other connected devices before attempting to connect.

5. Reset the Device - Remove the batteries, wait 15-20 seconds, and reinstall them. This will reset the connection and make the device available again. Then reopen the app and try reconnecting.

6. Restart Your Phone and Reinstall the App - Restart your phone and reinstall the app if necessary. This can help resolve persistent connection issues.

If you are still unable to connect, refer to the LED indicators below.

● LED Indicator Guide

An LED located on the circuit board (PCB) inside the device indicates its current status.

To view the LED, remove the front cover and locate the (PCB). The red LED can be seen at the position indicated in Fig 3 (refer to the “Installing the Unit” section).

LED Status Meanings:

1. Blinking Once Every 5 Seconds - The device is powered on and actively searching for a connection. It should appear on the “Connect to Device” screen in the app.

2. Blinking Once Every 1 Sec - The device is powered on and already connected to a phone. If it does not appear on your phone, check whether it is connected to another user’s device.

3. Not Blinking - The device is not receiving power. Check that the batteries are installed correctly. Replace with fresh batteries if needed

If the LED still does not blink, the device may be defective. Please contact us at:

Incorrect Measurements



If the device is displaying incorrect measurements, check the following:

1. Vehicle Measurements - Go to Settings and verify that your vehicle measurements are entered correctly for both side-to-side (width) and front-to-back (length).

Refer to the measurement section of this manual for proper instructions. Also, check for any input errors or typos, as incorrect values can significantly affect the readings.

2. Installation Location - Go to Settings and confirm that the correct installation location is selected.

For example, if the device is mounted on the passenger-side wall and the logo faces the driver's side, select "Logo Facing Driver Side."

If the device is mounted on a cabinet along the passenger side, but the logo faces the front of the RV, select "Logo Facing Front."

Selecting the wrong orientation can result in inaccurate readings.

3. Calibration (Set Level) - If the device was not calibrated correctly, it will store an incorrect reference point for "level."

This can happen if the "Set Level" function was used when the RV was not truly level.

To resolve this:

- Park your RV on very level ground
- Use traditional leveling tools (such as a bubble level) to confirm accuracy
- Recalibrate the device using the "Set Level" function in the app

Tip: Incorrect measurements are most commonly caused by wrong input values, incorrect installation orientation, or improper calibration.

If anything is missing, incorrect, or different from what you expected, please contact us. We will be happy to assist you promptly and answer any questions you may have.



support@carmtek.com

WWW.CARMTEK.COM

FCC Statement

This device complies with Part 15 of the FCC Rules. Operation is subject to the following two conditions: (1) this device may not cause harmful interference, and (2) this device must accept any interference received, including interference that may cause undesired operation

This device has been tested and found to comply with the limits for a Class B digital device, pursuant to Part 15 of the FCC Rules. These limits are designed to provide reasonable protection against harmful interference in a residential installation. This device generates, uses and can radiate radio frequency energy and, if not installed and used in accordance with the instructions, may cause harmful interference to radio communications.

However, there is no guarantee that interference will not occur in a particular installation. If this device does cause harmful interference to radio or television reception, which can be determined by turning the device off and on, the user is encouraged to try to correct the interference by one or more of the following measures:

- Reorient or relocate the receiving antenna.
- Increase the separation between the device and receiver.
- Connect the device into an outlet on a circuit different from that to which the receiver is connected.
- Consult the dealer or an experienced radio/TV technician for help

Changes or modifications not expressly approved by the party responsible for compliance could void the user's authority to operate the equipment