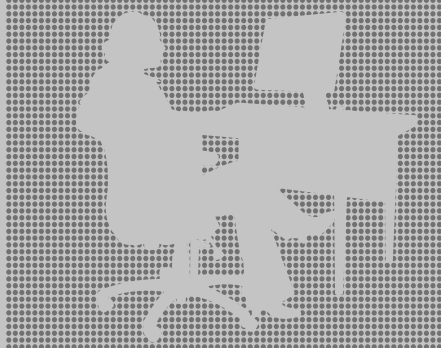


SENCOR

Let's live!



**MOBILE PHONE
MOBILNÍ TELEFON
MOBILNÝ TELEFÓN
MOBILTELEFON
TELEFON KOMÓRKOWY**

**INSTRUCTIONS FOR USE
NÁVOD K OBSLUZE
NÁVOD NA OBSLUHU
HASZNÁLATI ÚTMUTATÓ
INSTRUKCJA OBSŁUGI**

Element P010



Table of Contents

1. Basic information	5
1.1 Basic description of functions.....	5
2. Before using	6
2.1 Labelling and description of parts	6
2.1.1 Unit description	6
2.1.2 Description of buttons.....	7
2.2 Inserting SIM and memory cards.....	8
2.3 Turning the phone on/off.....	11
2.4 Charging the battery	11
2.5 Security password	12
3. Quick calling operation guide	13
3.1 Dialling a call	13
3.2 Rejecting a call.....	13
3.3 Answering a call	13
3.4 Ending a call	14
3.5 Emergency calls	14
3.6 Fast key selection	14
3.7 Call volume level.....	14
4. Phone menu functions	15
4.1 Call history list.....	15
4.2 Contacts.....	15
4.3 Message	15
4.4 Camera	16
4.5 Sound	17
4.6 Picture	17
4.7 Video	17

4.8 Video recorder	17
4.9 FM radio player.....	18
4.10 Tools	18
4.10.1 File list.....	18
4.10.2 Games.....	19
4.10.3 Recording device.....	19
4.10.4 Internet.....	19
4.10.5 Calendar	20
4.10.6 Calculator	20
4.10.7 World time	20
4.10.8 Bluetooth.....	20
4.10.9 Lamp.....	21
4.10.10 SIM Toolkit.....	21
4.10.11 Alarm clock	21
4.11 Settings	22
4.11.1 Call settings	22
4.11.2 Phone settings	23
4.11.3 Display	24
4.11.4 Security.....	24
4.11.5 Profiles	24
4.11.6 Connection.....	25
5. Entering text	25
5.1 Letters (upper case, normal).....	25
5.2 Numbers	26
6. Care and maintenance	26
6.1 Battery care	26
6.2 Care and maintenance.....	27
7. Technical specifications	28

1. Basic information

1.1 Basic description of functions

Thank you for selecting the Element mobile phone with colour display. While reading this manual, get familiar with the phone operation, features and control method.

The mobile is designed to be used in GSM/GPRS network environment and allows for using two SIM cards in the standby mode. While there is an ongoing call on one of the SIM cards, the other SIM is disabled. In addition to the basic call features, the phone offers a number of handy features such as address book, operating modes (profiles), messages, audio/video player, camera and video camera, alarm clock, calculator and other features that come in handy both at work and during leisure activities.

The mobile phone meets the GSM/GPRS requirements and has been certified by relevant authority.

Our company reserves the right to modify the content of this manual without prior notice.

2. Before using

2.1 Labelling and description of parts

2.1.1 Unit description



- | | |
|---|------------------------|
| 1. Loudspeaker | 8. Call end button |
| 2. LCD display | 9. Lamp |
| 3. Centre OK key and directional navigation keys (↑, ↓, →, ←) | 10. USB charging input |
| 4. Left soft button | 11. Headphones output |
| 5. Dial button | 12. Microphone |
| 6. Text and number keys | 13. Camera |
| 7. Right soft button | |

2.1.2 Description of buttons

Buttons	Function
Left/right soft button	<ol style="list-style-type: none"> 1. Performing the functions show in the left/right display bottom corner. 2. In standby, press the left soft button to enter the phone Menu or press the right button to enter Contacts (unless otherwise specified).
Navigation buttons	<p>The navigation buttons correspond to the direction buttons except for the special functions. During the call, press the up/down keys to decrease/increase the speaker volume.</p>
Dial button	<ol style="list-style-type: none"> 1. Press this button to dial a number or accept an incoming call. 2. Press this button in standby to enter the call history list.
OK button (centre key)	<p>This is used to access the phone Menu from standby. Press OK in other screens to confirm your selection.</p>
Call end button	<ol style="list-style-type: none"> 1. Hold down the button to turn your phone on/off. 2. Press in any screen to return to the standby screen. 3. Press to end the ongoing call or reject an incoming call.

Buttons	Function
Text and number keys	These are used to dial and input numbers and characters. Hold down the number 1 button to go to the preset voicemail. In the text mode, you can input the desired text.
* key	To enter a key number, in the standby screen, type * after entering a phone number; enter the desired key as soon as the "+" appears.
# key	<ol style="list-style-type: none"> 1. In the text edit screen, press # to switch the text input method. 2. In the standby screen, hold down the # button to switch between Normal, Silent, Vibrations and Outdoor phone profiles.
"0" key	In standby mode, hold down the "0" key to enable/disable the phone lamp.

2.2 Inserting SIM and memory cards

Before using your phone for the first time, it is necessary to insert the SIM card. You will obtain the SIM card from your mobile operator.

If you buy the services in a mobile network, you will obtain the SIM card along with the details such as your PIN code and optional services available.

Attention: Avoid bending the SIM card and protect it from scratching. Do not expose the SIM card to static electricity, water and pollution. When inserting and removing the SIM cards as well as the memory card, take utmost care to avoid damage to the slots and the phone's motherboard.

Warning:

Before handling cards (SIM and memory cards), first disconnect the charger, turn off the phone and remove the battery.

To open the rear cover, lift it with your nail or a flat tool in the notch (in the bottom right corner of the phone near the battery rear cover) and loose the cover gently all along the phone's circumference.

Lift the battery with your nail or a flat tool on the phone top part in the notch near the battery (on the inserted battery's top edge).

Insert the **SIM cards** into the appropriate slots under the battery with the contacts facing downwards so that the SIM card contacts touch the built-in SIM contacts inside the phone. Insert the SIM 1 card into the left slot with the tapered corner facing the lower right corner of the slot, then insert the SIM 2 card into the right slot with the tapered corner facing the lower right corner of the slot.

The memory card is to be inserted into the slot in the lower right corner of the space under the battery which is protected by a retaining tab. Press the retaining tab gently and shift it to the right to release.

Insert the memory card under the retaining tab with the contacts facing downward in a way that the memory card contacts touch the phone built-in contacts for a memory card and the memory card edge with notches faces the battery contacts downward. If the memory card is inserted correctly, the notches should copy the slot shape and the card can be smoothly pressed by gently pressing into the slot. Position the retaining tab over the memory card with a slight pressure while moving it to the left to secure the tab against motion.

Attention: If the memory card does not work, please check if it is correctly inserted and the contacts are good. The maximum size of the supported memory cards is 8GB.

When inserting the battery into the phone, first connect the battery contacts with the contacts inside the phone (at the bottom right) and then gently push the battery downwards into the battery compartment.

When putting on the rear cover, make sure that the cover is correctly placed on the battery compartment and gradually, gently push down the cover edges from the top edge downwards along the entire perimeter until it slides properly onto the phone body at all points.

Attention: phone functions such as voice calls, receiving and sending text and multimedia messages, and data transmission of various speeds, are only possible and available when at least one SIM card with activated operator functions and within the range of the operator's GSM network is inserted. Request information from your operator about available services on your SIM card and the accessibility of the network.

2.3 Turning the phone on/off

To turn the phone on, hold down the call end button.

To turn the phone off, hold down the call end button in the standby mode.

2.4 Charging the battery

Connect the charger in the charging socket at the phone bottom.

Then connect the charger in a standard power outlet.

The battery icon on the display will start to move.

The phone standby screen will show the information on the charging in progress (to remove this notification from the screen, press the "End" button). When the battery icon stops moving, the charging is finished. Press the charger connector with two fingers and pull it slightly to disconnect the charger from your phone.

Attention: To ensure a reliable phone operation, always use the original charger.

2.5 Security password

■ PIN

The PIN code is designed to prevent illegal usage of your SIM card. The PIN code is usually attached to your SIM card. If you enter a wrong PIN three times consecutively, you can unlock it by entering the PUK. For more details, please contact your mobile operator.

■ PIN2

PIN2 should be entered to enable some functions (such as call charges); if you enter a wrong PIN2 three times consecutively, you can unlock it by entering the PUK2. For more details, please contact your mobile operator.

■ PUK

When removing the locked PIN code, you must enter the PUK. The PUK code is attached to your SIM card. If the PUK is not attached, please contact your cellular operator. If you enter a wrong PUK ten times consecutively, you will no longer be able to use your SIM card. Please contact your phone operator to purchase a new card. The PUK cannot be changed. If you lose the PUK, please contact your cellular operator.

■ PUK2

When removing the locked PIN2 code, you must enter the PUK2. If you enter a wrong PUK2 ten times consecutively, you will no longer be able to use the functions that require entering the PIN2. Please contact your phone operator to purchase a new card. The PUK2 cannot be changed. If you lose the PUK, please contact your cellular operator.

3. Quick calling operation guide

If English is the default language after initial turning the phone on, please navigate through the phone Menu items as follows: Go to Menu/ Settings/ Phone settings/ Language settings/ Display language and select a desired language here.

To unlock/lock the key lock, press left soft key and then press * on the standby screen.

3.1 Dialling a call

In standby, press the numeric keys to enter the number you wish to dial. When the number is entered, press the dial number to make a call. If there are 2 active SIM cards in your phone, your phone will prompt you to select the SIM to be used for calling. If you want to make an international call, add an area prefix before the number.

3.2 Rejecting a call

You can reject an incoming call by pressing the call end button.

3.3 Answering a call

If there is an incoming call, the phone will alert you in an appropriate manner (by vibration, ringing etc.). If this feature is supported by your telephone network, the display will show the caller's name and phone number; at this moment, you can press the dial button to accept the incoming call.

3.4 Ending a call

When finished with the conversation, you can end the call by pressing the call end button.

3.5 Emergency calls

You can make emergency calls directly without a SIM card. Different networks use different emergency numbers. For details, please contact your mobile operator.

3.6 Fast key selection

To insert a pause into the phone number being entered (such as for dialling into an extension number), press the "*" key while entering the phone number. Then select Options/Insert/ Pause P and continue with entering the extension number. A short time pause will be inserted between the numbers while dialling so that the target exchange can recognize the extension correctly.

3.7 Call volume level

During the call, you can change the volume level by pressing the directional navigation keys (↑↓). The shared speaker is designed in a manner to allow ringing, handsfree function and the earpiece and does not allow for more audio operations to be performed at one time. No sound is output from the speaker as well as the earpiece at higher volume levels.

4. Phone menu functions

4.1 Call history list

The call history list offers you the call overview and the option to delete the items.

Missed calls: A list of recently missed calls is shown here.

Called numbers: A list of recently calls numbers is shown here.

Received calls: A list of recently received is shown here.

Rejected calls: A list of all recent calls is shown here.

Press the Options button to select a desired function for the selected item in each overview such as Call number, Type SMS, Add number to contacts, Add to Blacklist or Delete a record from the call history.

Delete all: You can delete all records on the called numbers as well as received, missed and rejected calls.

4.2 Contacts

This function allows you to browse through the telephone directory, as well as save, edit and delete names and phone numbers in phone and on the SIM card.

The capacities of SIM cards vary and the maximum capacity of the phone's memory is 300 contacts.

To save a new contact, please select Options/New, to edit a selected saved record, press the centre key and select Options/Edit.

4.3 Message

The message service is in fact the service of the phone network. The correct function of this menu depends on

your SIM card type and on the services provided by your mobile operator. Therefore, verify them before using this function. The message capacity of your SIM depends on the SIM type. Before using this function, make sure to set your phone operator's service centre number.

Typing a message: Insert the message recipient's number in the upper row or press the centre OK key to enter the contact list ("+" icon) and confirm the desired contact. Type the message text in the rows below the recipient list. For instructions on how to insert text, please refer to a separate chapter. To send the message, use the menu accessed by the left soft key (Options/Send) or by pressing the OK central key ("↑" icon).

Inbox: Stores the received messages.

Outbox: Stores the messages that were not sent successfully.

Concepts: Stores saved unfinished messages.

Sent: Stores successfully sent messages.

Templates: allow you to edit the templates of messages or sending messages based on a selected text template by pressing OK central key ("↑" icon).

4.4 Camera

The unit is equipped with a camera. For correct camera function, the memory card should be inserted and set as the default storage.

To adjust zoom, press the up/down arrow key. Press OK to take an image, to save the image, press the left soft button.

Press the Options button (during shooting) to display the menu of available functions:

Image viewer: allows you to enter the viewer of saved images.

Video mode: Allows you to take and save a video using the Camera function in the Video camera mode.

Settings: allows you to adjust the properties settings.

4.5 Sound

Your phone can play MP3 files saved in the phone's memory or on the memory card and supports background playback. To operate the player and the volume, please use the navigation keys and the centre key. Pressing the left soft key will take you to the playlist editing or further to the Settings:

Repeat: Set the playback repeat mode

Random: Set the random playback mode

4.6 Picture

Allows you to enter the viewer of saved images.

4.7 Video

Allows you to watch videos. Your phone supports 3GP, AVI and MP4 video formats. To operate the player and the volume, please use the navigation keys and the centre key.

4.8 Video recorder

The recording device allows you to record audio and video. Press OK to start/pause playback.

4.9 FM radio player

To receive FM radio, we recommend to connect the headphones which serve as the phone's antenna. You can dial and receive calls without limitation while listening to the radio. The radio sound will be muted automatically during the call. Press left/right arrow key to switch stations. Press OK to stop/switch on the FM radio broadcast.

To control the volume, please use the up/down arrow key. In the radio playback screen, press the left soft button to enter the Options menu where you can do the following:

Automatic searching and storing: Starts automatic searching and stores the found stations in the station list.

Channel list: Allow you to play, edit the name or the frequency of a selected station.

Manual searching: You can search and store the frequencies manually.

Turn the speaker on: Allows you to perform a loud playback.

Background playback: Allows you to turn background radio listening on and off.

4.10 Tools

4.10.1 File list

Allows you to view images and photos or video files on the memory card or in the phone using the photo album. Furthermore, you can set an image as the wallpaper or share a file via Bluetooth.

Tip: The files taken by the camera are stored in the Photos folder and the videos are stored in the Video folder.

4.10.2 Games

The phone offers games which can be controlled with navigation keys, central key or keyboard buttons.

4.10.3 Recording device

The recording device allows you to record audio. Press OK to start/pause playback.

4.10.4 Internet

Your phone is equipped with an internet browser.

For correct browser function, a memory card with free space must be inserted. Before making first settings, make sure to have mobile data services enabled with your cellular provider. If the network connection parameters are not set automatically, you must set them manually in the application Settings section. For parameters necessary for mobile data, please contact your cellular operator.

The browser is designed to work with basic web sites.

Enter the desired web site address in the row at the top of the display (URL address field).

Attention: The internet function primarily shows the Wap pages. Web pages may not always be shown correctly and may not support some active graphic elements. The unit may show an alert to a lack of space if the web page is too big and the integrated browser cannot show it.

4.10.5 Calendar

You can use this function to display the calendar days easily. Press the up/down/left/right arrow keys to go to another date and enter a task for a given day.

4.10.6 Calculator

This function allows you to perform simple mathematical operations. To control, please use the navigation arrow keys and the central key according to the display hint.

4.10.7 World time

This function allows you to display the current time in the selected cities.

4.10.8 Bluetooth

Bluetooth: If the Bluetooth connection is enabled, further Bluetooth setting options can be edited. To enable/disable the Bluetooth, please use the first "Bluetooth" item by pressing the "Enable/Close" left soft key.

Visibility: You can choose if your phone will be visible or hidden during the Bluetooth connection. If the Bluetooth visibility is disabled, other devices will be unable to discover your phone.

Paired device: A list of already paired devices is shown here. You can search for other Bluetooth devices and find compatible ones. If the pairing passwords of two devices are identical, the pairing will be successful. Some Bluetooth devices (such as Bluetooth headphones) have their pairing connection code preset. To find this code, please refer to the appropriate device's user manual.

4.10.9 Lamp

Allows you to control the lamp located at the top of the phone. You can also enable/disable the lamp by pressing and holding the "O" key on the phone's standby screen.

Attention: Never aim the lamp directly into anyone's eyes. Should the light beam aim directly into your eyes, turn away your eyes immediately. Do not use any magnifying devices along with the lamp that would amplify the light beam.

4.10.10 SIM Toolkit

The SIM toolkit services availability is based on the SIM card. For more information, please contact your mobile operator.

4.10.11 Alarm clock

You can make presets of several enabled or disabled alarm clocks. For each alarm clock, please select if it's to be enabled or disabled. Press the centre OK key to enter in the selected alarm clock edit mode. In the edit mode, you can use the arrow buttons to move up or down and

go to other options. With the cursor on the desired item, you can press the left/right buttons to select the change options with some items (such as hours and minutes of the wake-up time). With other items (usually marked with a drop-down list icon), press "OK" and then select one of the displayed options.

4.11 Settings

You can adjust your phone settings, display, security or ringing profiles.

4.11.1 Call settings

In the Settings/Call settings, you will find the following functions for individual SIM cards.

Dual SIM: This is used to set the active SIM cards (only the selected SIM or both SIM cards). The aircraft mode is used to turn off all of the phone's transmission and reception modes (such as turning off the GSM/GPRS and Bluetooth signals).

Note: During the flight, do not use this function but turn the entire unit off instead.

Call forwarding: When the function is enabled, you can allow for forwarding the incoming call to the voicemail or other phone numbers under specified conditions (such as all calls, when busy, when there is no answer, when the number is unavailable etc.).

Call waiting: You can turn this function on or off. If this function is enabled, you can receive another incoming call even while calling.

Call locked: If this function is enabled, you can restrict the calls (you must request your phone operator) under specified conditions (all outgoing/incoming calls, calls during roaming, international calls).

Hide the caller's ID: This function allows you to hide the outgoing call phone number.

Other: This allows you to enable other functions (reminder of the ongoing call length, automatic redial in case of a connection failure, vibrations when the call is connected, answer SMS in case of a call rejection, automatic voice call recording).

4.11.2 Phone settings

Time and date: You can set the phone's date and time as well as their display mode.

Language settings: You can change the phone language.

Shortcuts: You can change the speed dial assignment for the right soft key as well as the navigation keys in standby (up, down, right, left).

Automatic activation: The phone allows you to set the automatic shut down and power on time.

Attention: If your SIM card is protected by the PIN code, you must enter the PIN when the phone is automatically turned on to allow for logging in the cellular network.

Reset settings: You can reset some phone settings to their default values. The initial code to restore the factory settings is as follows: "1122".

Caution: restoring the factory settings may lead to losing the stored settings and data.

4.11.3 Display

This allows you to adjust the phone's display wallpaper in standby, contrast, keyboard backlighting time interval as well as the automatic keyboard lock option.

4.11.4 Security

This contains the item to setup individual SIMs and the phone security:

PIN: allows you to enable/disable and/or change the PIN code.

PIN2 change: allows you to change the PIN2 code settings.

Locked phone: allows you to enable or disable the phone lock. The default password is "1122".

Edit the phone password: allows you to change the phone password.

Privacy: you can setup the phone's lock application to opening selected functions.

Locked Display: Allows you to enable/disable the keyboard lock in the standby screen by pressing the end call key.

Enabled outgoing number: Allows you to set up the enabled outgoing numbers. To edit the settings, you must use the PIN 2 code.

Blacklist: You can enable or disable rejecting the blacklisted numbers. You can edit the blacklist of numbers.

4.11.5 Profiles

The preset profiles are Normal, Silent, Vibration alert,

Interior and Outdoor. The settings of some profiles can be adjusted.

4.11.6 Connection

Network account: This is used to set up the SIM designed to data connection. For correct data account settings to transfer via GPRS please contact your mobile operator.

5. Entering text

The unit offers several text input modes to allow you to enter text or data into your contacts, edit contact entries, search for names and type SMS messages.

If you want to change the input method in the "text input" mode, press the "#" button. The selected text input mode appears at the top of the screen.

5.1 Letters (upper case, normal)

Enter the editing page, press the "#" button and switch the input mode to "letters" (such as "Cz"), then use the numeric buttons and the selected numbers will appear on the screen.

Press the numeric button once to enter the first letter shown on the button, press twice quickly to enter the second letter. If the letter to be entered is located on the same button as the previous letter, wait for the cursor to reappear and then input the next letter.

If you want to enter "ok", for example, you must press the "6" button three times to input "o", then press the "5" button twice and the display will show "k". Press the right soft button to delete the entered text.

5.2 Numbers

Enter the edit mode and press "*" to switch the input method to "numbers" (such as "123"). Then use the numeric buttons and the display will show the relevant numbers.

Individual 0-9 buttons represent the numbers from 0 to 9.

After entering the desired number, you can press the relevant button. Press the right soft button to delete the input number.

To input the **punctuation marks** in letter mode, use the selection by pressing the * button. To speed up the selection, you can use the "1" key (press repeatedly).

To insert a **space** in text in the letter mode, press the "0" key.

6. Care and maintenance

6.1 Battery care

The unit is powered from the battery. The battery must be recharged when flat. To reach the maximum power of a new battery, only charge a fully flat battery.

Disconnect the charger from the mains socket and the unit if it's not to be used. Do not let a fully charged battery be charging longer than it's necessary. Overcharging may lead to shortening the battery's lifetime.

The temperatures influence the level to which the battery can be charged. Therefore, the battery must be left at room temperature before charging. The battery cannot be charged if its temperature exceeds 40 °C.

Use the battery only for the intended purpose and prevent it from short-circuiting. A random short-circuit may occur if a metallic object causes direct connection between the

positive (+) and negative (-) battery contact.

Do not use a damaged battery.

Do not leave the battery at hot or cold locations. This will shorten its capacity and lifetime. A unit with a hot or cold battery may not function temporarily even if the battery is fully charged.

Do not put the batteries in fire as they may explode. Please dispose in accordance with local regulations.

6.2 Care and maintenance

The following recommendations will help you to extend your phone's lifetime.

Keep the unit and accessories out of the reach of small children.

Keep your device dry. All kinds of fluids and humidity will lead to electronic circuitry malfunction.

Avoid keeping the unit in rooms with high ambient temperature. High temperatures may shorten the lifetime of electronic devices and deform or melt some plastics.

Do not attempt to open the unit in a different manner than is described in this manual. Unprofessional handling may lead to damaging the unit.

When cleaning the unit, do not use aggressive chemicals or strong cleaning agents.

Note: Use only supplied or approved spare accessories. Using unoriginal accessories may lead to the phone malfunction and void the warranty.

7. Technical specifications

Display

Size: 1,77" TFT

Resolution: 160 x 128

Chipset

CPU: SC6531

Memory

RAM: 32 MB

ROM: 32 MB

Micro SDHC slot (up to 8GB)

Camera

Rear: 0.08Mpx (VGA)

Network/connectivity

GSM Dual Band 900/1800MHz

Bluetooth 2.1

Features

FM radio

Vibration ringing

Video and music player

Keyboard lock

Other

Micro USB

3.5mm audio connector

Batteries: 600mAh Li-Ion battery

Dimensions: 112 x 45 x 13 mm

Weight: 58g

Accessories: Charger, user's manual

INSTRUCTIONS AND INFORMATION REGARDING THE DISPOSAL OF USED PACKAGING MATERIALS

Dispose of packaging material at a public waste disposal site.

DISPOSAL OF USED ELECTRICAL AND ELECTRONIC APPLIANCES



The meaning of the symbol on the product, its accessory or packaging indicates that this product shall not be treated as household waste.

Please, dispose of this product at your applicable collection point for the recycling of electrical & electronic equipment waste. Alternatively in some states of the European Union or other European states you may return your products to your local retailer when buying an equivalent new product. The correct disposal of this product will help save valuable natural resources and help in preventing the potential negative impact on the environment and human health, which could be caused as a result of improper liquidation of waste. Please ask your local authorities or the nearest waste collection centre for further details. The improper disposal of this type of waste may fall subject to national regulations for fines.

For business entities in the European Union

If you wish to dispose of an electrical or electronic device, request the necessary information from your seller or supplier.

Disposal in other countries outside the European Union

If you wish to dispose of this product, request the necessary information about the correct disposal method from local government departments or from your seller.

CE Hereby, FAST ČR, a.s. declares that the radio equipment type Element P010 is in compliance with Directive 2014/53/EU.

For full version of the EU declaration of conformity, please refer to www.sencor.eu website.

Changes to the text, design and technical specifications may occur without prior notice and we reserve the right to make these changes.

The original version is in the Czech language.

Address of the manufacturer: FAST ČR, a.s.,
Černokostecká 1621, Říčany CZ-251 01

SENCOR®

EN Warranty conditions

Warranty card is not a part of the device packaging.

This product is warranted for the period of 24 months from the date of purchase to the end-user. Warranty is limited to the following conditions. Warranty is referred only to the customer goods using for common domestic use. The claim for service can be applied either at dealer's shop where the product was bought, or at below mentioned authorized service shops. The end-user is obligated to set up a claim immediately when the defects appeared but only till the end of warranty period. The end user is obligated to cooperate to certify the claiming defects. Only completed and clean (according to hygienic standards) product will be accepted. In case of eligible warranty claim the warranty period will be prolonged by the period from the date of claim application till the date of taking over the product by end-user, or the date the end-user is obligated to take it over. To obtain the service under this warranty, end-user is obligated to certify his claim with duly completed following documents: receipt, certificate of warranty, certificate of installation.

This warranty is void especially if apply as follows:

- Defects which were put on sale.
- Wear-out or damage caused by common use.
- The product was damaged by unprofessional or wrong installation, used in contrary to the applicable instruction manual, used in contrary to legal enactment and common process of use or used for another purpose which has been designed for.
- The product was damaged by uncared-for or insufficient maintenance.
- The product was damaged by dirt, accident of force majeure (natural disaster, fire, and flood).
- Defects on functionality caused by low duality of signal,

electromagnetic field interference etc.

- The product was mechanically damaged (e.g. broken button, fall).
- Damage caused by use of unsuitable media, fillings, expendable supplies (batteries) or by unsuitable working conditions (e.g. high temperatures, high humidity, quakes).
- Repair, modification or other failure action to the product by unauthorized person.
- End-user did not prove enough his right to claim (time and place of purchase).
- Data on presented documents differs from data on products.
- Cases when the claiming product cannot be indentified according to the presented documents (e.g. the serial number or the warranty seal has been damaged).

Authorized service centers

Visit www.sencor.eu for detailed information about authorized service centers.

SENCOR®

Let's live!

