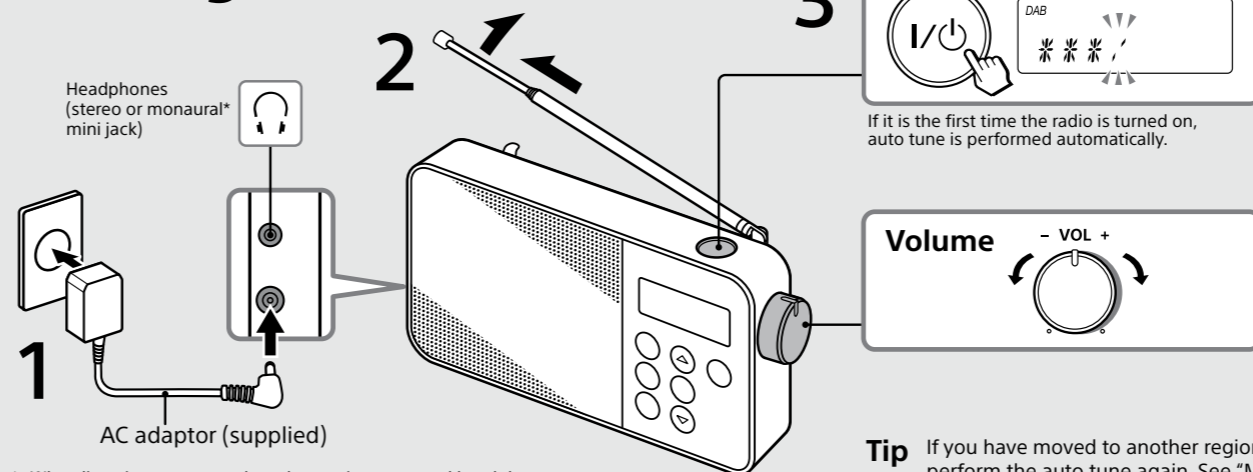




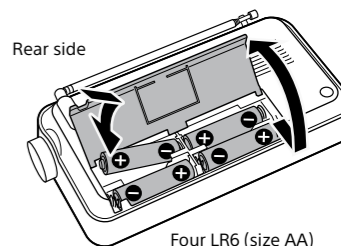
Getting Started



* When listening to a stereo broadcast using monaural headphones, you will hear sound from the left channel only.

To use the unit on batteries

Rear side



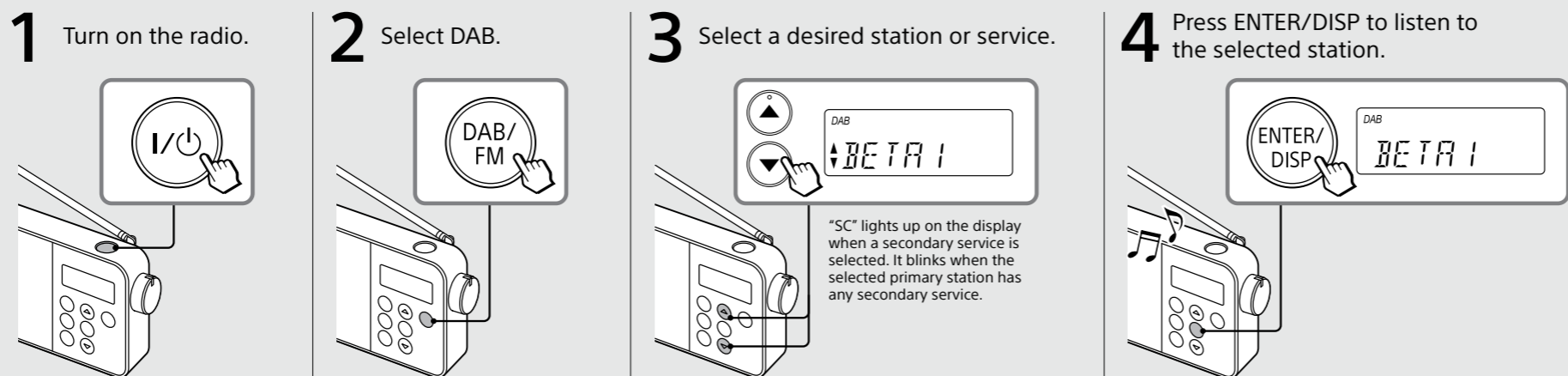
Four LR6 (size AA) batteries (not supplied)

Insert the side of the battery first.

Tip If you have moved to another region and want to make a new list of DAB stations, perform the auto tune again. See "MENU Settings" for details. **MENU → AUTOTUNE**

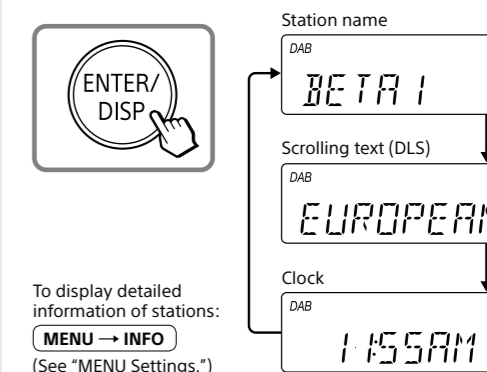
Listening to the Radio

DAB



To change the display **DAB**

Press ENTER/DISP repeatedly.

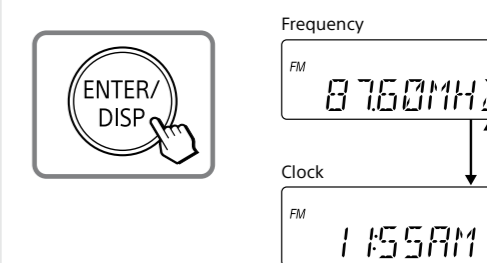


FM



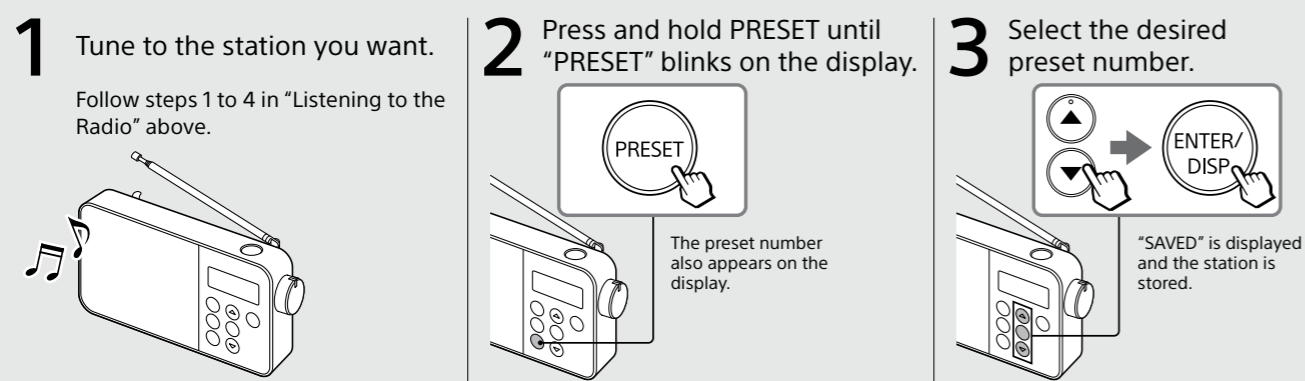
To change the display **FM**

Press ENTER/DISP repeatedly.

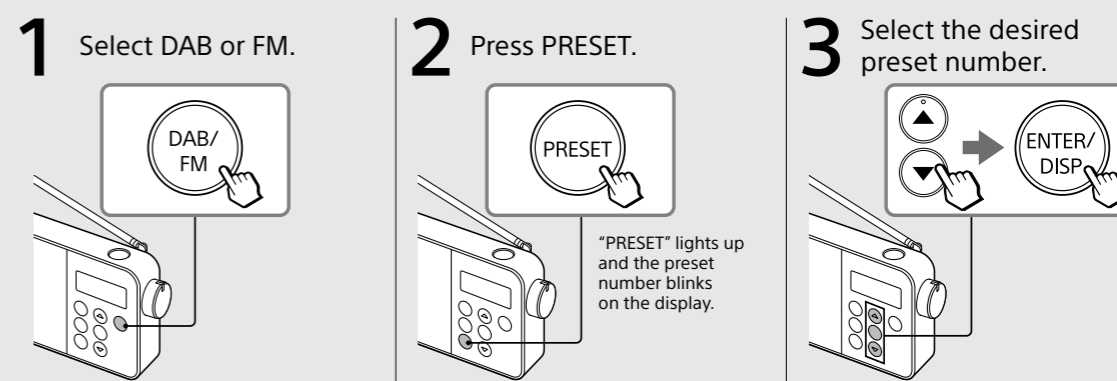


Presetting stations **DAB** **FM**

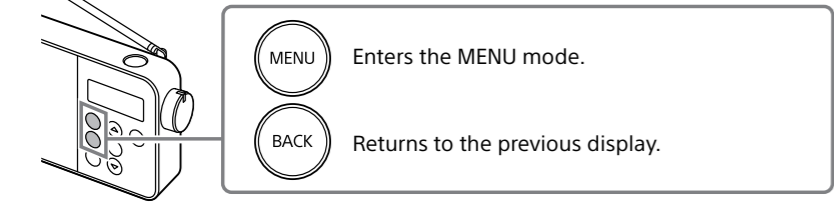
Tip The preset DAB stations remain in the unit's memory even after the auto tune is performed.



Listening to a preset station **DAB** **FM**



MENU Settings



In the MENU mode, press **▲** or **▼** to select the desired menu item or setting, and then press ENTER/DISP to confirm the selection.

AUTOTUNE – Auto tuning

DAB

If you have moved to another region, or when the unit is reset, perform the auto tune to make a new list of receivable DAB stations.

Select “YES” to start the auto tune process. When finished, the unit receives the first station in alphabetical order stored by auto tune.

Notes

- DAB auto tune may take a few minutes depending on the region.
- To cancel the auto tune process halfway, press MENU or BACK. Any stations received before cancellation are stored in the unit.

SLEEP – Sleep timer

The unit automatically turns off after the set time has elapsed. Select the desired timer setting (minutes) from the following:

60/45/30/15/OFF (deactivated)

When the sleep timer is set, “SLEEP” appears on the display.

PRESET – Presetting stations

You can preset up to 10 stations each for DAB and FM. See the previous “Presetting stations” section for details on how to preset stations using the PRESET button.

SAVE: The station you are listening to will be stored in the unit. Select the desired preset number, then press ENTER/DISP.

Note

If another station is already assigned to the selected preset number, that station is replaced by the new one.

DELETE: You can delete any unnecessary stations from the preset list. Select the preset number you want to clear, then press ENTER/DISP.

INFO – Station information

DAB

You can display the various information of the DAB station you are listening to.

CHANNEL: Channel (See the DAB frequency table in “Specifications.”)

ENSEMBLE: Ensemble label (up to 16 characters long)

STATION: Station name

PTY: PTY label (See “PTY (programme type)” in “Specifications.”)

BIT RATE: Bit rate

SIGNAL: Signal level, from 0 (no signal) to 100 (maximum)

Notes

- If there is no ensemble label or no station name, “NO NAME” will be displayed.
- Characters that cannot be displayed appear as “_”.

LIGHT – Backlight

ON: The backlight will be on all the time when the unit is powered by the AC adaptor. When you use the unit on batteries, the backlight will turn off automatically if no operation is performed for 30 seconds.

AUTO: The backlight will turn off automatically if no operation is performed for 30 seconds.

MANUAL – Manual tuning

DAB

If the DAB reception by auto tune is poor quality, try manual tuning.

- Select a desired DAB channel. The unit starts scanning for the receivable stations in the selected channel.
- Select the station you want to listen to.

Tip

The new DAB station received by manual tuning is stored in the unit.

TIME – Setting the clock

SET: “AUTO” is set by default, which enables the clock to synchronize with any DAB data being received. Select “MANUAL” to set the clock manually using the **▲**, **▼** and ENTER/DISP buttons.

12H/24H: Select the clock display mode, 12-hour clock or 24-hour clock.

Note

When the clock is set manually, the clock will be reset if the AC adaptor is unplugged and the batteries are removed for more than 1 minute.

BEEP – Operation beep

Select “ON” to enable the beep that sounds when you operate the unit.



RESET – Resetting the unit

Select “OK” to reset the unit to the factory defaults. All the settings, presets and the list of receivable DAB stations will be deleted.

WARNING

To reduce the risk of fire or electric shock, do not expose this apparatus to rain or moisture.

To avoid electrical shock, do not open the cabinet. Refer servicing to qualified personnel only.

Do not install the appliance in a confined space, such as a bookcase or built-in cabinet. To reduce the risk of fire or electric shock, do not place objects filled with liquids, such as vases, on the apparatus.

As the main plug of AC adaptor is used to disconnect the AC adaptor from the mains, connect it to an easily accessible AC outlet. Should you notice an abnormality in it, disconnect it from the AC outlet immediately.

The unit is not disconnected from the AC power source (mains) as long as it is connected to the wall outlet, even if the unit itself has been turned off.

The nameplate and important information concerning safety are located on the bottom exterior of the main unit and on the surface of the AC adaptor.

Excessive sound pressure from earphones and headphones can cause hearing loss.

Do not expose the batteries (battery pack or batteries installed) to excessive heat such as sunshine, fire or the like for a long time.

In case of battery leakage

If the battery fluid has leaked, do not touch the fluid with your bare hands. Battery fluid may remain inside the unit. Consult your nearest Sony dealer. If battery liquid gets into your eyes, do not rub your eyes, as blindness may occur. Quickly wash your eyes with plenty of clean water and immediately seek medical attention. If battery liquid gets on your body or clothing, burns or injury may occur. Quickly wash off with clean water, and seek medical attention if skin inflammation or injuries occur.

Notice for customers: the following information is only applicable to equipment sold in countries applying EU directives

This product has been manufactured by or on behalf of Sony Corporation, 1-7-1 Konan Minato-ku Tokyo, 108-0075 Japan. Inquiries related to product compliance based on European Union legislation shall be addressed to the authorized representative, Sony Deutschland GmbH, Hedelfinger Strasse 61, 70327 Stuttgart, Germany. For any service or guarantee matters, please refer to the addresses provided in the separate service or guarantee documents.

Precautions

- Operate the unit only on the power sources specified in “Specifications.” For battery operation, use four LR6 (size AA) alkaline batteries. For AC operation, use only the supplied AC adaptor. Do not use any other type of AC adaptor.
- Failure to use the supplied AC adaptor may cause the unit to malfunction, as the polarity of the plugs of other manufacturers may be different.
- When operating the unit on batteries, it is recommended that you remove the AC adaptor from the wall outlet and the DC IN 6 V jack. Disconnect the plug of the external power source before operating the unit.
- Use the unit within a temperature range of 0°C to 40°C. If it is used in temperatures higher than this range, numbers may appear in the display which have nothing to do with the frequency being received. If it is used in temperatures lower than this range, the numbers displayed may change very slowly. (These irregularities will disappear and there will be no damage to the unit when the unit is used in the recommended temperature range again.)
- When listening with headphones, use stereo (3-pole) or monaural (2-pole) mini plug headphones. Sound may not be heard with other types of headphones.
- Avoid exposure to temperature extremes, direct sunlight, moisture, sand, dust or mechanical shock. Never leave in a car parked in the sun.
- Should any solid object or liquid fall into the unit, disconnect the AC adaptor and remove the batteries, and have the unit checked by a qualified personnel before operating it any further.
- Since a strong magnet is used for the speakers, keep personal credit cards using magnetic coding or spring-wound watches away from the unit to prevent possible damage from the magnetism.
- To clean the casing, use a soft dry cloth. Do not use any type of solvent, such as alcohol or benzine, which may damage the finish.
- Do not operate the unit with wet hands since it may cause a short circuit.



this product is disposed of correctly, you will help prevent potential negative consequences for the environment and human health, which could otherwise be caused by inappropriate waste handling of this product. The recycling of materials will help to conserve natural resources. For more detailed information about recycling of this product, please contact your local Civic Office, your household waste disposal service or the shop where you purchased the product.

Europe Only



This symbol on the battery or on the packaging indicates that the battery provided with this product shall not be treated as household waste. On certain batteries this symbol might be used in combination with a chemical symbol. The chemical symbols for mercury (Hg) or lead (Pb) are added if the battery contains more than 0.0005% mercury or 0.004% lead. By ensuring these batteries are disposed of correctly, you will help prevent potentially negative consequences for the environment and human health which could otherwise be caused by inappropriate waste handling of the battery. The recycling of the materials will help to conserve natural resources.

In case of products that for safety, performance or data integrity reasons require a permanent connection with an incorporated battery, this battery should be replaced by qualified service staff only. To ensure that the battery will be treated properly, hand over the product at end-of-life to the applicable collection point for the recycling of electrical and electronic equipment. For all other batteries, please view the section on how to remove the battery from the product safely. Hand the battery over to the applicable collection point for the recycling of waste batteries. For more detailed information about recycling of this product or battery, please contact your local Civic Office, your household waste disposal service or the shop where you purchased the product.

If you have any questions or problems concerning your unit, please consult your nearest Sony dealer.

Troubleshooting

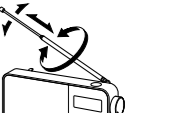
Should any problem persist after you have made the following checks, consult your nearest Sony dealer.

Display is dim, or no indication is displayed.

- The unit is being used in extremely high or low temperatures or in a place with excessive moisture.

Very weak or interrupted sound, or unsatisfactory reception.

- If you are in a building, listen near a window.
- Extend the antenna and adjust the length and the angle for best reception.
- Replace all the batteries with new ones if they are exhausted.
- If a mobile phone is placed close to the unit, a loud noise may be heard from the unit. Keep the phone away from the unit.

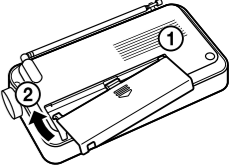


Batteries get exhausted very quickly.

- Be sure to turn off the unit when not using it. The estimated battery life is 10 – 13 hours. See “Specifications” for details.

The battery compartment lid has come off.

- The battery compartment lid is designed to come off when opened with excessive force. Insert the right hinge of the lid into the right hole of the compartment (①), then insert the left hinge into the left hole (②).



Messages

LOW BATT (flashes, and the power is turned off)

- The batteries are exhausted. Replace all the batteries with new ones.

NO SIGNAL

- There is no supported DAB broadcast in your region.
- You have lost the reception of the selected DAB broadcast.

NO PRESET

- There is no preset station.

STATION FULL

- The list of DAB stations stored in the unit is full.

OFF AIR

- The selected station or service is currently not broadcasting.

Specifications

Frequency range

DAB (Band-III): 174.928 MHz – 239.200 MHz

FM: 87.5 MHz – 108 MHz (0.05 MHz step)

Intermediate frequency

DAB (Band-III): 2.048 MHz

FM: 1.943 MHz

DAB (Band-III) frequency table (MHz)

Channel	Frequency
5A	174.928
5B	176.640
5C	178.352
5D	180.064
6A	181.936
6B	183.648
6C	185.360
6D	187.072
7A	188.928
7B	190.640
7C	192.352
7D	194.064
8A	195.936
8B	197.648

Channel	Frequency
8C	199.360
8D	201.072
9A	202.928
9B	204.640
9C	206.352
9D	208.064
10A	209.936
10N	210.096
10B	211.648
10C	213.360
10D	215.072
11A	216.928
11N	217.088
11B	218.640

Channel	Frequency
11C	220.352
11D	222.064
12A	223.936
12N	224.096
12B	225.648
12C	227.360
12D	229.072
13A	230.784
13B	232.496
13C	234.208
13D	235.776
13E	237.488
13F	239.200

Speaker: Approx. 6.6 cm dia., 8 Ω, monaural

Audio power output: 0.3 W

Output: ∅ (headphones) jack (ø 3.5 mm, stereo mini jack)

Power requirements: 6 V DC, four LR6 (size AA) alkaline batteries

External power source: DC IN 6 V

Battery life (JEITA)*:

Approx. 13 hours for DAB, 10 hours for FM (Using Sony (LR6SG) alkaline batteries)

Approx. 11 hours for DAB, 9 hours for FM (Using Sony (NH-AA) Ni-MH batteries)

Dimensions: Approx. 180 mm × 95 mm × 36 mm (W/H/D) excl. projecting parts and controls

Mass: Approx. 445 g incl. batteries

Supplied accessories: AC adaptor (1)

* When listening through the speaker. Measured by JEITA (Japan Electronics and Information Technology Industries Association) standards. The actual battery life may vary depending on usage and circumstances.

Design and specifications are subject to change without notice.

PTY (programme type)

This function indicates services in programme type, such as NEWS, SPORT of the PTY list, transmitted in the DAB.

Programme type	Display
No programme type	NO PTY
News	NEWS
Current Affairs	AFFAIRS
Information	INFO
Sport	SPORT
Education	EDUCATE
Drama	DRAMA
Culture	ARTS
Science	SCIENCE
Varied	TALK
Pop Music	POP
Rock Music	ROCK
Easy Listening Music	EASY
Light Classical	CLASSICS
Serious Classical	CLASSICS

Programme type	Display
Other Music	OTHER M
Weather/meteorology	WEATHER
Finance/Business	FINANCE
Children’s programmes	CHILDREN
Social Affairs	FACTUAL
Religion	RELIGION
Phone In	PHONE IN
Travel	TRAVEL
Leisure	LEISURE
Jazz Music	JAZZ
Country Music	COUNTRY
National Music	NATION M
Oldies Music	OLDIES
Folk Music	FOLK
Documentary	DOCUMENT