



User Manual

Govee Smart Bulb



Govee Home App

For FAQs and more information,
please visit: www.govee.com

Step1

Download Govee Home App
Scan the code to connect to 2.4GHz network

Téléchargez l'application Govee Home
Scannez le code pour vous connecter au réseau
2.4GHz

Scarica l'App Govee Home
Scansiona il codice per connetterti alla rete a
2,4GHz

Descargar la aplicación Govee Home
Escanear el código para conectarse a la red de
2.4 GHz

Laden Sie die Govee Home-App herunter
Scannen Sie den Code, um sich mit dem 2,4
GHz-Netzwerk zu verbinden

Govee Homeアプリをダウンロード
コードをスキャンして 2.4 GHz ネットワークに接続



Download on the
App Store

GET IT ON
Google Play



Step2

Installing your bulb
Screw the bulb into base

Installation der Glühbirne
Schrauben Sie die Glühbirne in den Sockel

Instalación de la bombilla
Enrosque la bombilla en la base

Installation de l'ampoule
Vissez l'ampoule dans la douille

Installazione della lampadina
Avvitare la lampadina nella base



Step3

Search your device in Govee Home App

Recherchez votre appareil dans l'application Govee Home

Cerca il dispositivo nell'App Govee Home

Buscar el dispositivo en la aplicación Govee Home

Suchen Sie Ihr Gerät in der Govee Home-App

Govee Homeアプリでデバイスを検索



Step4

Voice Control Guidance and Matter Guide

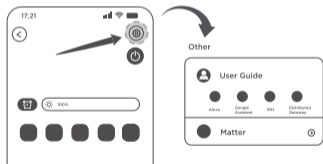
Guide pour la commande vocale et Guide Matter

Guida al controllo vocale e guida di Matter

Guía de control de voz y Guía de Matter

Anleitung zur Sprachsteuerung und zum Matter-Leitfaden

音声制御ガイダンスと Matter ガイド



Matter Guide

Cautions:

1. You will need to complete the network connection of apps that support Matter (e.g. Google Home/Apple HomeKit, etc.) within 15 minutes after the product is powered on when using Matter for the first time.
2. An IPv6 network is required.
3. Changing the network may cause Matter to malfunction.
4. If the product cannot connect to the app, first restore the product to factory settings by switching on and off for 4 times. After restoring, try connecting again.

Step1

Find the Matter QR code or device number on the product or on the "Device Settings" page in Govee Home App.

Step2

Turn on Bluetooth on your smartphone.

Step3

Download and open an app that supports Matter like Google Home, Apple HomeKit, etc.

Step 4

Use the device number or QR code located on the product or in the app to complete the network connection for the product for Matter.