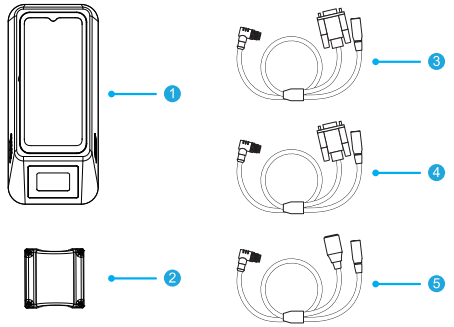


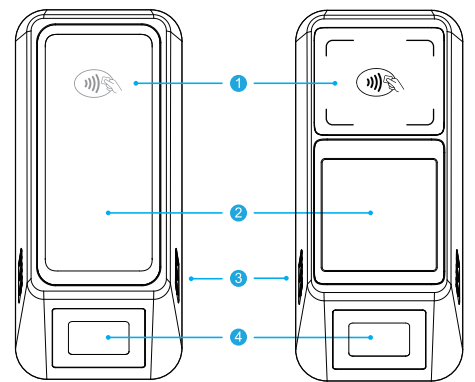
Thank you for choosing our product!  
We sincerely hope that wizarPOS will enable smart payments and enhance the convenience of your daily business.

Before powering up the device, please check the terminal and accessories as follows:



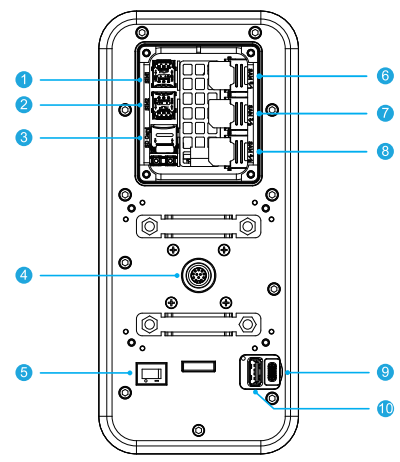
- 1 Q3 BU
- 2 Mounting Bracket
- 3 RS485 Cable (Optional)
- 4 RS232 Cable (Optional)
- 5 POE Cable (Optional)

Please contact your product provider if anything is missing.



Q3 BU 6.5" Display      Q3 BU 4" Display

- 1 NFC Contactless
- 2 6.5" / 4" Display
- 3 Speaker
- 4 Scanner

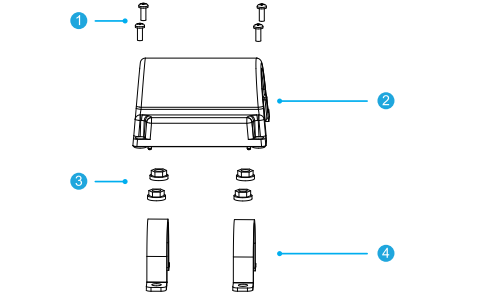


- 1 SIM1
- 2 SIM2
- 3 SD Card
- 4 Aviation Plug
- 5 Power Button
- 6 SAM 0/1
- 7 SAM 2/3
- 8 SAM 4/5
- 9 USB Type-C (Slave)
- 10 USB Type-A (Host)

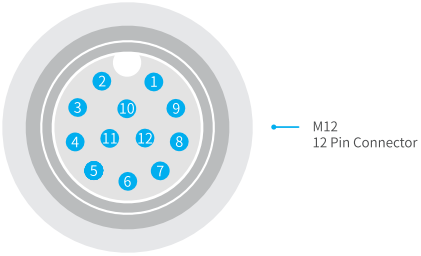
# Q3 Ticket Validator User Manual



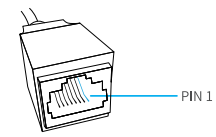
www.wizarpos.com



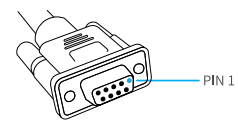
- 1 Screw PM 3.0x8.0
- 2 Bracket Back-cover
- 3 M5 anti-slip nut
- 4 Locking piece of the fixing seat
- 5 Bus pole (32.5±1mm)
- 6 Bracket Rubber pad



PIN Number	POE	RS232	RS485
1,2	DC Power +	DC Power +	DC Power +
3,9	DC Power -	DC Power -	DC Power -
4	RX +	RS232_RX	RS485A
5	RX -	RS232_TX	RS485B
6	POE AC -	GND	GND
7	TX +	Relay Pin 1	Relay Pin 1
8	TX -	Relay Pin 2	Relay Pin 2
10	POE AC +	GND	GND
11	POE AC +	DIN 1	DIN 1
12	POE AC -	Pulse 1	Pulse 1



POE Wiring		
12 Flying Leads		Mates with RJ45 Female Connector
Grey	RJ45 Female Connector	3
Black		6
Purple		4
Light Blue		5
Yellow		7
Orange		8
Pink		1
Green		2
Red, White	DC 5.5 × 2.5 mm Female Connector	5525 Female connector (-)
Blue, Brown		5525 Female connector (+)



RS485 Wiring		RS232 Wiring	
PIN Definition	Signal	PIN Definition	Signal
1	RS485A	2	RS232_TX
2	RS485B	3	RS232_RX
5	GND	5	GND

Thank you for choosing WizarPOS!

Intelligent + Security



## 1 Power on/off

- Power on: Connect the power supply; the terminal will power on automatically.
- Power off: Disconnect the power supply; the terminal will power off automatically.

## 2 Access network

After powering on the terminal, please connect to Wi-Fi or 4G to access network services.

WLAN Setting:

- Swipe down from the top of the screen to access the notification panel. Click the Wi-Fi button to turn on or off the internet. Hold on the button to get into the Wi-Fi setting.
- You can also click Settings and choose WLAN to get into Wi-Fi settings. Activate the Wi-Fi function, select the network that has been automatically detected, and enter the password. You can also tap on 'Add Network', input the network name, and then enter the password to connect to a Wi-Fi network. Swipe up from the screen to access the 3-button navigation. Click the circle to return to the home page. You can repeat this process multiple times for any additional networks available, including 4G and Mobile Phone Hot Spots.

## 3 Settings all done

Once you have completed the above settings, please contact your service provider for assistance with application downloads and technical support.

## 4 Terminal self-diagnostic

To verify the functionality of the equipment, utilize the terminal's self-check capabilities. Click Settings > Self-check and choose the functionality or parts that you want to test.

## 5 Card Transactions

Contactless Transactions: Tap a contactless enabled card or smartphone to the top end of the terminal at the area marked by the contactless symbol, to engage the contactless sensor.

Trouble	Trouble shooting
Cannot connect the mobile network	<ul style="list-style-type: none"> <li>◆ Check whether the function of "data" is open.</li> <li>◆ Check whether the APN is correct.</li> <li>◆ Check whether the data service of SIM is activated.</li> </ul>
Display unstable	◆ The display may be interfered by instability voltage when charging, please reconnect the plug.
No response	◆ Restart the APP or operation system.
Operation very slow	◆ Please exit APPs which are not necessary.

## 6 FCC Statements

This device has been tested and found to comply with the limits for a Class B digital device, pursuant to part 15 of the FCC Rules. These limits are designed to provide reasonable protection against harmful interference in a residential installation. This equipment generates, uses and can radiate radio frequency energy and, if not installed and used in accordance with the instructions, may cause harmful interference to radio communications. However, there is no guarantee that interference will not occur in a particular installation. If this equipment does cause harmful interference to radio or television reception, which can be determined by turning the equipment off and on, the user is encouraged to try to correct the interference by one or more of the following measures:

- Reorient or relocate the receiving antenna.
- Increase the separation between the equipment and receiver.
- Connect the equipment into an outlet on a circuit different from that to which the receiver is connected.
- Consult the dealer or an experienced radio/TV technician for help.

Caution: Any changes or modifications to this device not explicitly approved by manufacturer could void your authority to operate this equipment.

This device complies with part 15 of the FCC Rules. Operation is subject to the following two conditions:

This device may not cause harmful interference, and (2) this device must accept any interference received, including interference that may cause undesired operation.

- 6 Radiation Exposure Statement  
This equipment complies with FCC radiation exposure limits set forth for an uncontrolled environment. This equipment should be installed and operated with minimum distance 20cm between the radiator and your body.

## 7 Safety Warning

- WizarPOS provides after-sales service in accordance with applicable laws and regulations. Please review the warranty terms outlined below.
- Warranty Period: The terminal and charger are covered by a one-year warranty. During this period, if the product experiences a failure not caused by user negligence, WizarPOS will offer free repair or replacement services. For assistance, it is recommended to first contact your local distributor, and provide a completed warranty card with accurate information.
- The warranty does not cover the following situations: unauthorized maintenance of the terminal, modifications to the terminal's operating system, installation of third-party applications causing malfunction, damage due to improper use (such as dropping, crushing, impact, immersion, fire, etc.), missing or inaccurate warranty information, expired warranty period, or any other activities that violate legal regulations.
- Follow installation instructions carefully and use only the specified power adapter. Replacing it with other adapters is prohibited. Ensure that the power socket meets the required voltage specifications. It is recommended to use a socket with a fuse and ensure proper grounding.
- To clean the terminal, use a soft, lint-free cloth—avoid using chemicals and sharp objects.
- Keep the terminal away from liquids to prevent short circuits or damage caused by splashes, and avoid inserting foreign objects into any ports. The terminal should not be exposed to direct sunlight, high temperatures, smoke, dust, or humidity.
- If the terminal malfunctions, contact certified POS maintenance professionals for repair. Unauthorized personnel should not attempt repairs.
- Do not modify the terminal without authorization. Modifying a financial terminal is illegal. Users assume the risks associated with installing third-party applications, which may cause the system to operate at reduced speeds.

- In case of abnormal odors, overheating, or smoke, immediately disconnect the power supply.
- The disposal of equipment and accessories must comply with local regulations. These items cannot be discarded as household waste. Improper disposal of batteries may lead to hazardous situations such as explosions.

## 8 Environment

 Operating Temperature  
-35°C~60°C (31°F to 140°F)

Repair date	Repair content

For more information, please log on to the company's official website <http://www.wizarpos.com>

Specification	Detailed Description
Software Platform	Secure Android 14
Memory	2GB RAM + 32GB Flash, 4GB RAM + 32GB Flash (Optional)
Processor	Quad-Core @ 2.0GHz
Display	4" multi-touch color LCD panel (480 x 480) 5.56" multi-touch color LCD panel (720x1612) covered with Gorilla Glass™m 3
Scanner	1D & 2D barcode scanning
Sensor	G-Sensor
Certification	PCI PTS 5.X, SRED, EMV L1 & L2, EMV CL L1, TQM, PayPass, PayWave, ExpressPay, D-PAS, Anatel, Interac Flash L2, Rupay, MIR, Jspeedy, RoHS, FCC, CE, UnionPay Transit and Visa Transit certified
Connectivity	WiFi 2.4GHz / 5GHz, BT 5.0, GSM, 3G, 4G LTE, eSIM supported (Optional) RS32 / RS485 / Ethernet (PoE) x1 USB Type-A x1 / USB Type-C x1, Relay x1, SIM x2, SAM x6 GPS, GLONASS, BEIDOU, Galileo
Card Readers	NFC contactless, ISO 14443 Type A & B, MIFARE, Sony Felica
Power	9~40V DC in / POE power supply
Enclosure	IP 65 dust / waterproof rating IK 08 vandal-proofing -35°C to +60°C operating temp
Dimensions	235 x 106 x 60.25 mm (9.25 x 4.17 x 2.37 inches)
Weight	700g (1.54lb)

All features and specifications are subject to change without notice. Contact wizarPOS website for more details.  
[www.wizarpos.com](http://www.wizarpos.com)

wizarPOS

