

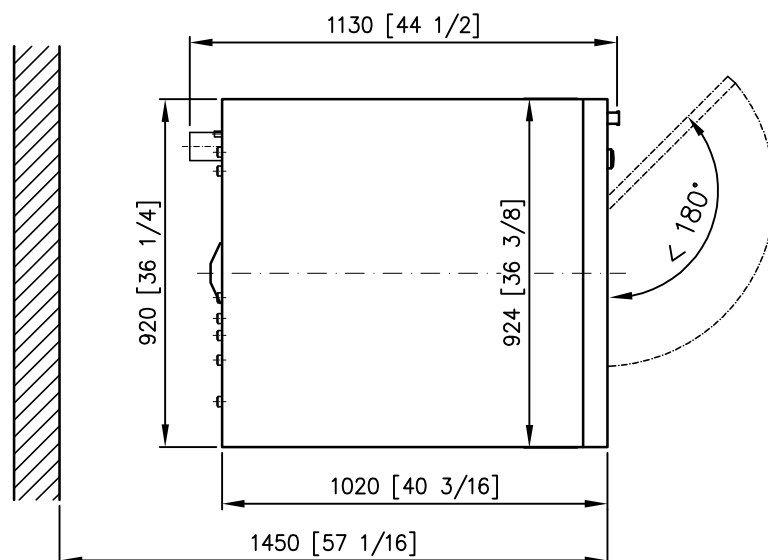
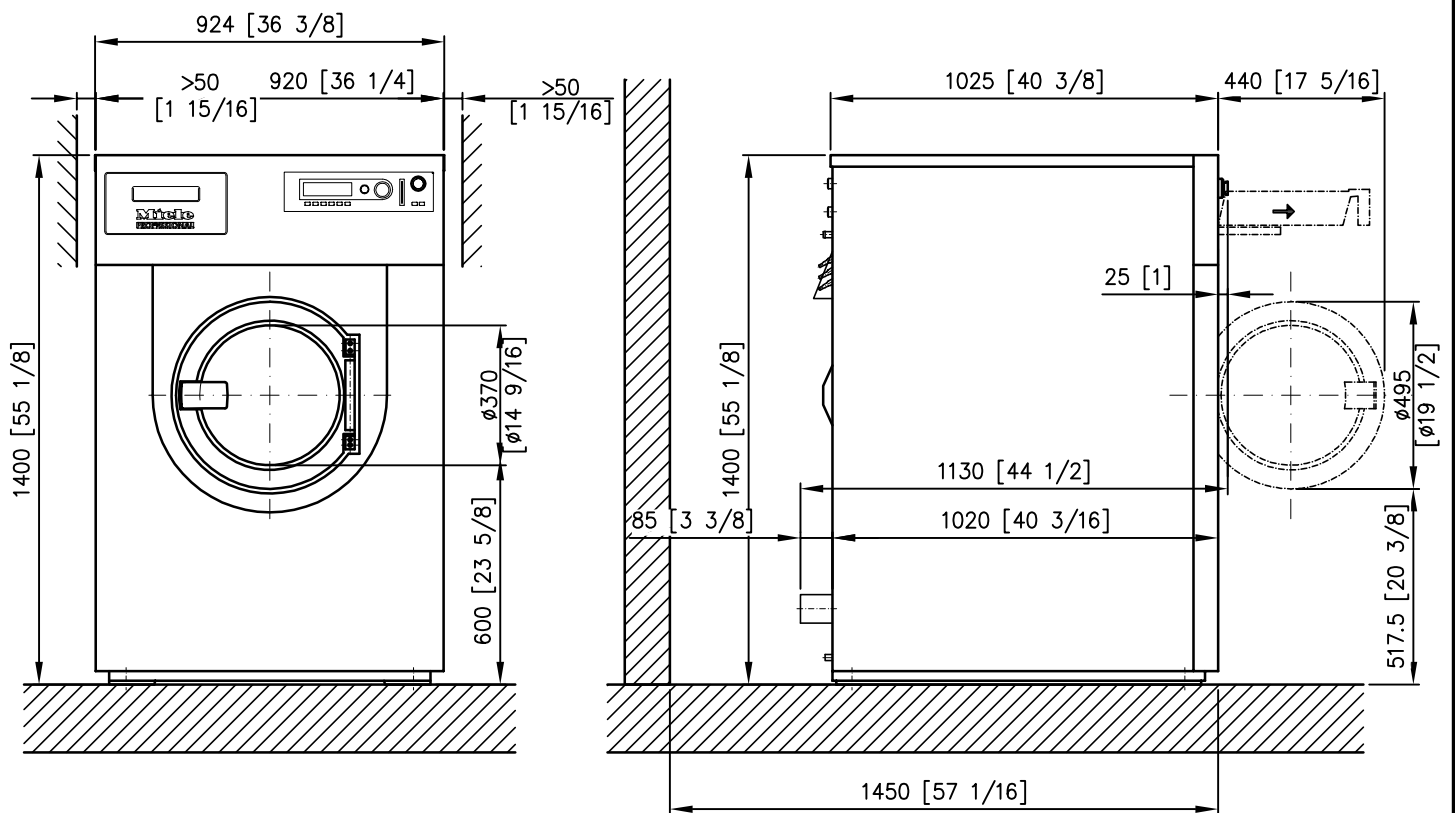
Installation plan
Washer

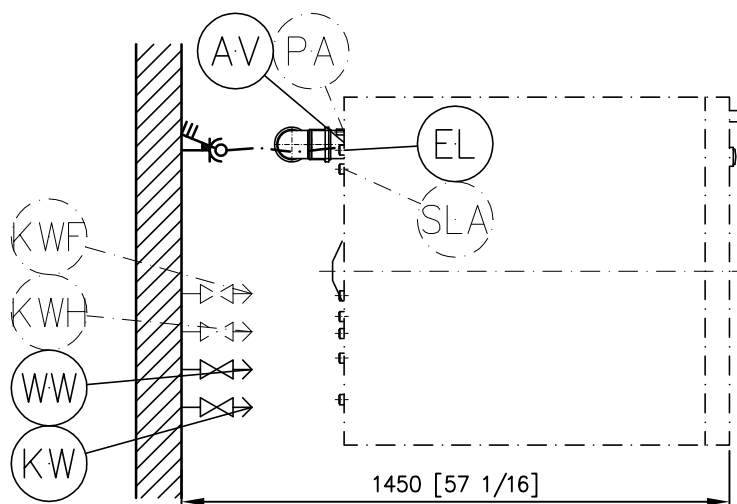
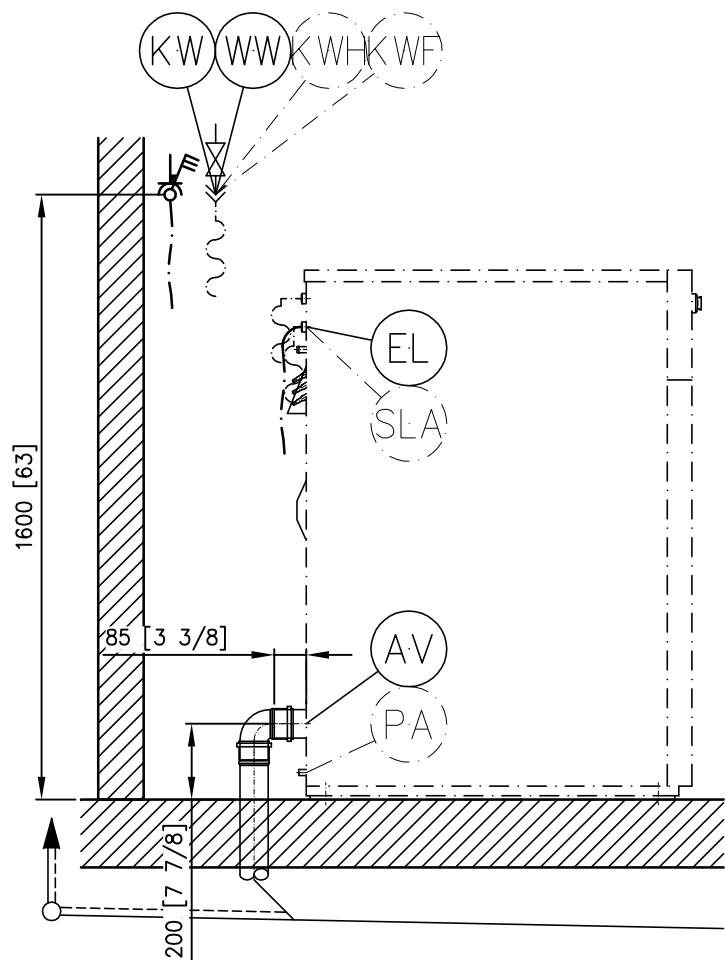
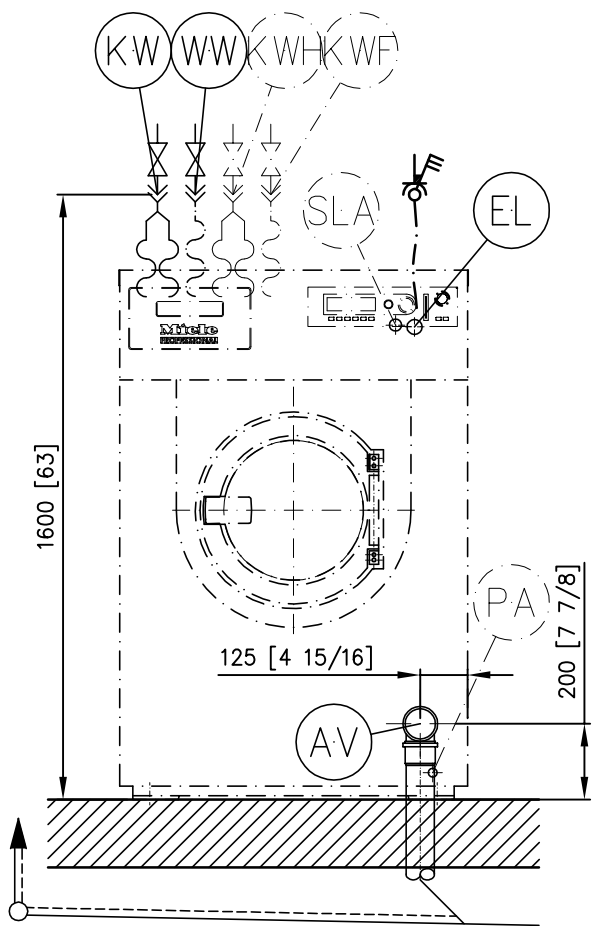


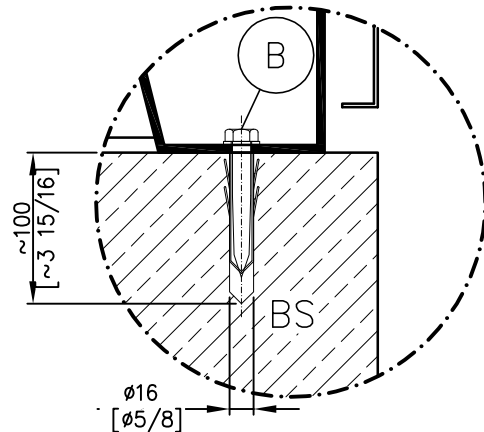
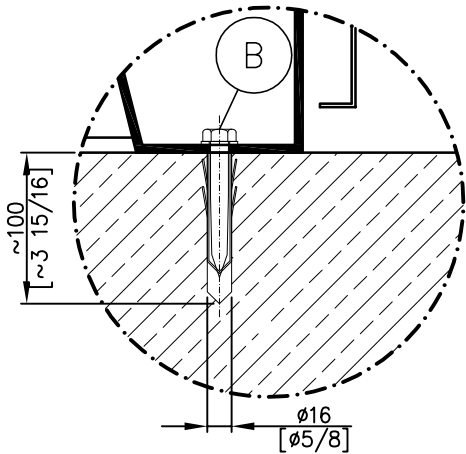
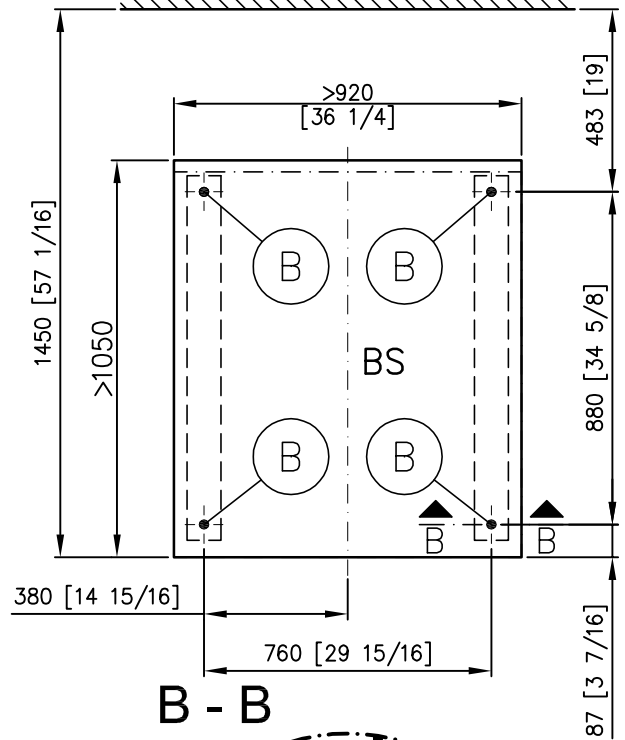
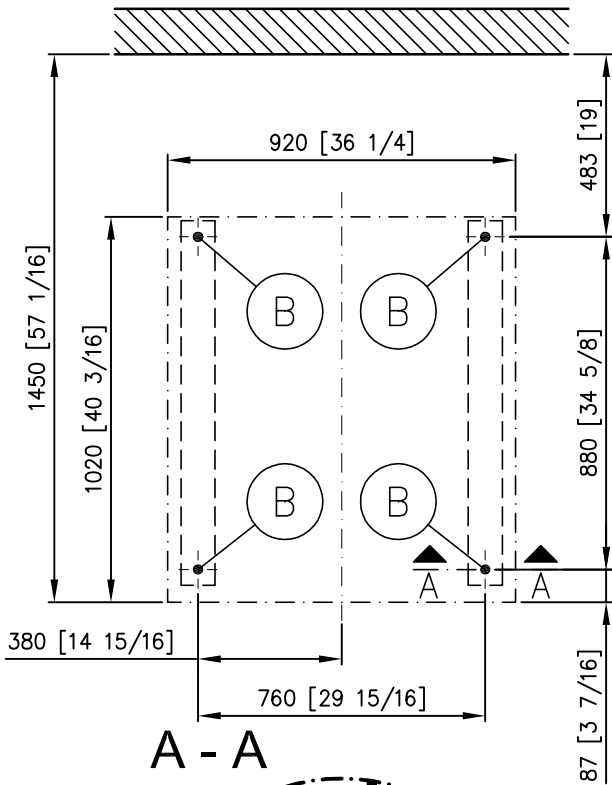
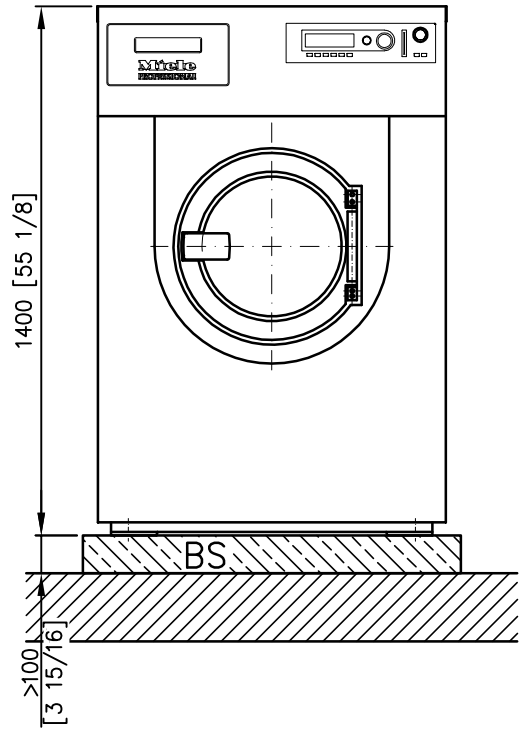
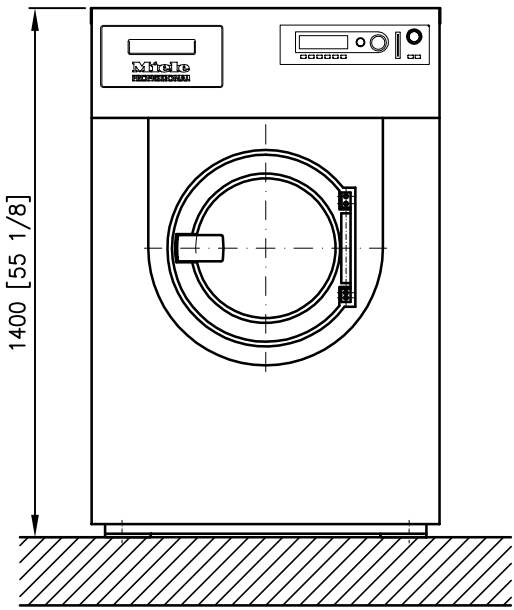
PW 6207 EL

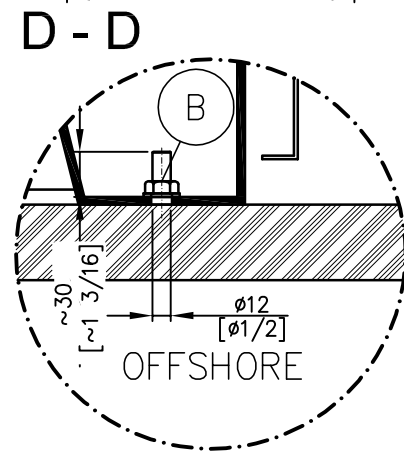
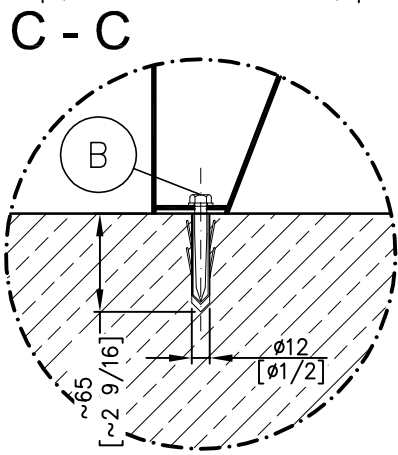
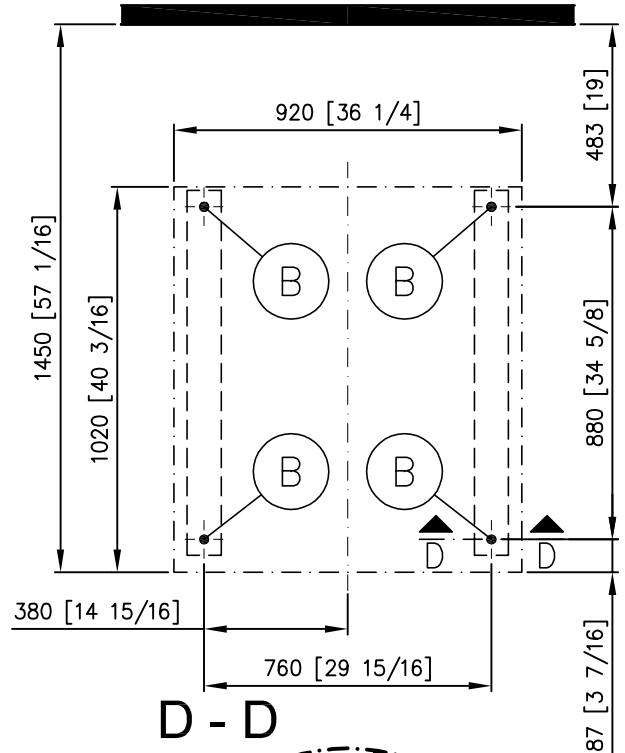
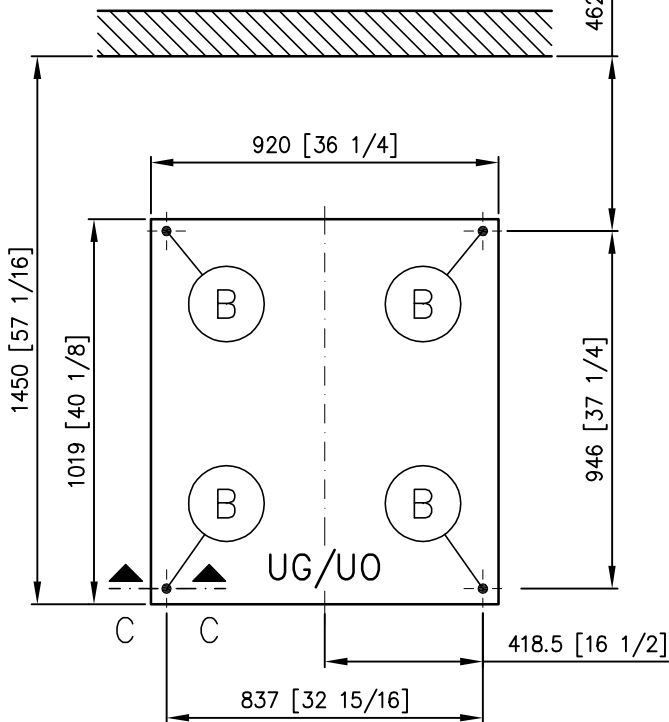
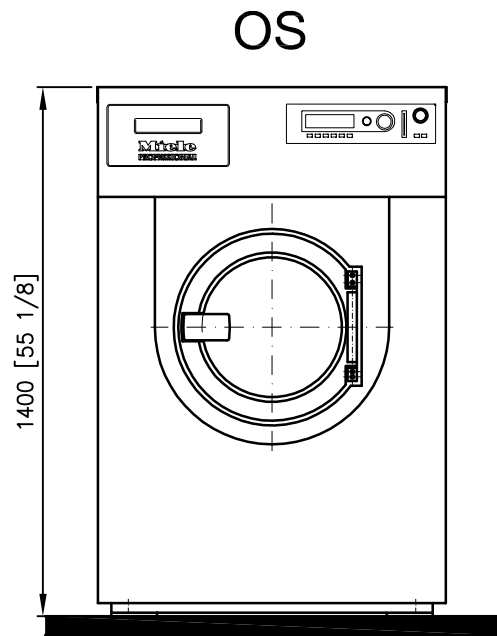
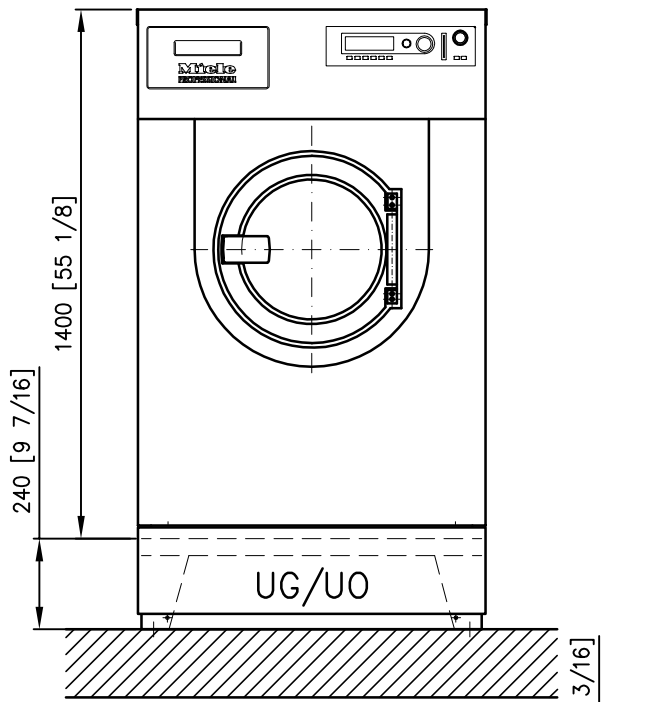
en - US











Technical Data Sheet

Miele
PROFESSIONAL

Washer:
Type of heating:

PW 6207
Electric (EL)

Legend:



Circled, bold-type abbreviations mean:
Connection required



Abbreviations surrounded by broken circle:
Connection optional or required, depending on model





en - US





Options/Accessories:

UM	Miele base	UO 6020 (UO = open base)	9 7/16"	240 mm
		Height	36 1/4"	920 mm
		Width	39 3/4"	1,009 mm
		Depth		
		UG 6020 (UG = closed-in base)	9 7/16"	240 mm
		Height	36 1/4"	920 mm
		Width	40 1/8"	1,019 mm
		Depth		
BS	Concrete platform	Recommended height	9 7/16"	240 mm
		Minimum height	3 15/16"	100 mm
		Min. platform width	36 1/4"	920 mm
		Min. platform depth	41 5/16"	1,050 mm
WI	Weighing system	Version with built-in weighing system		
OS	Offshore	Special version Offshore		

Machine connections:

(EL)	1. Standard voltage (as delivered) *	3 AC 220-240 V	3 AC 220-240 V
	Frequency	50 – 60 Hz	50 – 60 Hz
	Rated load	18 kW	18 kW
	Fuse rating	3 x 50 A	3 x 50 A
	Connection cable, min. cross-section	4 x 10 mm ²	4 x 10 mm ²
	Connection cable not included.		
	Alternative voltage (switchable)	3 AC 208 V	3 AC 208 V
	Frequency	60 Hz	60 Hz
	Rated load	15,3 kW	15,3 kW
	Fuse rating	3 x 50 A	3 x 50 A
	Connection cable, min. cross-section	4 x 10 mm ²	4 x 10 mm ²
	Connection cable not included.		
* If power supply includes a stinger leg, please contact Technical Service at USA 1-800-991-9380 CDN 1-800-643-5361			

		<p>The electrical connection may only be made to an electrical system listed in accordance with the national laws, ordinances and directives as well as the local provisions. In addition to this, the regulations of the power supply utility, the accident prevention regulations and the insurance company applicable at the site of installation as well as the recognized standards of technology must also be observed.</p> <p>The installation must be performed by a qualified person (electrician).</p> <p>The appliance can be connected either via permanent connections or via plug connections according to IEC 60309-1. Wall receptacles or mains separation devices must be accessible after the appliance is installed.</p> <p>However, we recommend connecting the appliance via a plug connection so that an electrical safety check can be carried out, e.g. during repair or maintenance.</p> <p>If it is necessary to install a residual current device (RCD) in accordance with the local regulations, a residual current device type B (AC/DC-sensitive) must always be used.</p>		
	Potential equalization	<p>Externally threaded supports for shims and nuts</p> <p>Accessories such as shims and nuts are only included with the OS version.</p> <p>If necessary, equipotential bonding with good galvanic contact must be created, in compliance with all applicable local installation specifications.</p>	<p>3/8" x 1 3/8" 10 M</p>	<p>10 x 35 mm 10 M</p>
	Peak load switch-off	<p>Connected voltage for the control contacts Connection cable, min. cross-section</p> <p>Connection cable not included.</p> <p>We recommend making the connection with a flexible connection line and an additional separator. When installed, the separator should be visible and directly accessible.</p>	<p>AC 230 V 5 x 1.5 mm²</p>	<p>AC 230 V 5 x 1,5 mm²</p>
	Cold water Soft water	<p>Water pressure/Min. flow rate Water pressure/Max. flow rate Max. volume flow Max. volume flow (in absence of hot and hard water supply)</p> <p>2 Connector hoses with threaded joint 3/4" including Y fitting (3/4" / 1") included with the unit. Threaded connector fitting at site as per DIN 44 991 (flat sealing) Length of connector hose</p> <p>Average water requirement for a standard program (60° colored washing) determined at cold, hot and hard water connection.</p> <p>If no hot water, add the corresponding water requirement to the cold water requirement.</p> <p>If connecting to industrial water (option), subtract that water requirement from the cold water requirement.</p>	<p>14.5 psi 145.04 psi 5.7 gal/min 9.2 gal/min</p> <p>1" external thread 4' 11 1/16"</p> <p>30.6 gal/h</p>	<p>100 kPa 1.000 kPa 26 l/min 42 l/min</p> <p>1" external thread 1,500 mm</p> <p>approx. 116 l/h</p>
	Hot water Soft water	<p>Max. water temperature Water pressure/Min. flow rate Water pressure/Max. flow rate Max. volume flow</p> <p>1 Connector hose with threaded joint 3/4" included with the unit. Threaded connector fitting at site as per DIN 44 991 (flat sealing) Length of connector hose</p> <p>Average water requirement for a standard program (60° colored washing) determined at cold, hot and hard water connection.</p> <p>If no hot water supply, connect hose to cold water!</p>	<p>158°F 14.5 psi 145.04 psi 4.2 gal/min</p> <p>3/4" external thread 4' 11 1/16"</p> <p>31.4 gal/h</p>	<p>70 °C 100 kPa 1.000 kPa 16 l/min</p> <p>3/4" external thread 1,500 mm</p> <p>approx. 119 l/h</p>

	<p>Cold water Hard water</p>	<p>Water pressure/Min. flow rate Water pressure/Max. flow rate Max. volume flow</p> <p>2 Connector hoses with threaded joint 3/4" including Y fitting (3/4" / 1") optionally included with the unit. Threaded connector fitting at site as per DIN 44 991 (flat sealing) Length of connector hose</p> <p>Average water requirement for a standard program (60° colored washing) determined at cold, hot and hard water connection.</p>	<p>14.5 psi 145.04 psi 7 gal/min</p> <p>1" external thread 4' 11 1/16"</p> <p>19 gal/h</p>	<p>100 kPa 1,000 kPa 32 l/min</p> <p>1" external thread 1,500 mm approx. 72 l/h</p>
	<p>Cold water Liquid dispensing</p>	<p>Water pressure/Min. flow rate Water pressure/Max. flow rate Max. volume flow</p> <p>1 Connector hose with threaded joint 3/4" optionally included with the unit. Threaded connector fitting at site as per DIN 44 991 (flat sealing) Length of connector hose</p>	<p>14.5 psi 145.04 psi 1.45 gal/min</p> <p>3/4" external thread 4' 11 1/16"</p>	<p>100 kPa 1,000 kPa 5.5 l/min</p> <p>3/4" external thread 1.500</p>
	<p>Drainage Dump valve</p>	<p>Max. water outflow temperature Drainage supports in machine (outer diameter)</p> <p>On-site drain connection (inner diameter)</p> <p>Max. transient throughput</p> <p>Vented drainage required. If ventilation is insufficient, fit Miele kit, Mat. no. 05238090. Drain manifolds serving several machines must be of sufficient cross-section.</p>	<p>203°F 2 15/16" [DN 2 3/4"] 2 15/16" [DN 2 3/4" sleeve] 43.99 gal/min</p>	<p>95 °C 75 mm [DN 70] 75 mm [DN 70 sleeve] 200 l/min</p>
	<p>Fittings</p>	<p>without plinth It is essential to ensure that the appliance is fastened adequately to the substrate!</p> <p>Fastening material included with unit: 2 × wood screws DIN 571 (Ø × length) 2 × screw anchors (Ø × length)</p> <p>A sufficiently firm substrate with sufficient load-bearing capacity is necessary for the installation. The fastening material included is only suitable for a solid concrete substrate. The fastening material for other suitable substrates must be provided on site.</p> <hr/> <p>on concrete platform It is essential to ensure that the appliance is fastened adequately to the substrate!</p> <p>Fastening material included with unit: 2 × wood screws DIN 571 (Ø × length) 2 × screw anchors (Ø × length)</p> <p>The quality of the concrete and its strength must be assessed according to the machine load. Ensure that the location of the platform is fixed adequately in the case of dynamic loads!</p> <hr/> <p>Miele base It is essential to ensure that the base is fastened adequately to the substrate!</p> <p>Fastening material included with base: 4 × wood screws DIN 571 (Ø × length) 4 × screw anchors (Ø × length)</p> <p>The installation and assembly of the appliance and base must follow the installation instructions provided</p>	<p>1/2" x 3 9/16" 5/8" x 3 1/8"</p> <p>1/2" x 3 9/16" 5/8" x 3 1/8"</p> <p>5/16" x 3 1/8" 1/2" x 2 3/8"</p>	<p>12 x 90 mm 16 x 80 mm</p> <p>12 x 90 mm 16 x 80 mm</p> <p>8 x 80 mm 12 x 60 mm</p>

	Version WI	<p>It is essential to ensure that the appliance is fastened adequately to the substrate!</p> <p>Fastening material included with unit: 4 × wood screws DIN 571 (Ø × length) 4 × screw anchors (Ø × length)</p> <p>A sufficiently firm substrate with sufficient load-bearing capacity is necessary for the installation. The fastening material included is only suitable for a solid concrete substrate. The fastening material for other suitable substrates must be provided on site.</p>	1/2" x 3 9/16" 5/8" x 3 1/8"	12 x 90 16 x 80
	Version OS	<p>It is essential to ensure that the appliance is fastened adequately to the substrate!</p> <p>The fastening material is not included with the unit Female thread for the fastening</p> <p>The fastening must be carried out on site corresponding to the local requirements and conditions. The appliance is supplied without feet so that the female thread can be used for fastening with studs.</p>	1/2"	12 mm
	Machine data	Width Depth Height Housing width Housing depth Width loading opening (clear width) Recommended wall spacing (to front edge of appliance front) Minimum wall spacing (to rear edge of appliance cover) Net weight Max. floor loading in operation. Max static loading Max dynamic loading Max. drum rotation frequency Average heat dissipation in the installation room (dependent on room temperature and selected program) Noise level (re 20 mPA), relative to the workplace (distance 1 m and 1.6 m high)	36 3/8" 44 1/2" 55 1/8" 36 1/4" 40 3/16" 36 5/8" 57 1/16" 15 3/4" 1120 lbs 6,203 N 5,670 N 533 N 18.3 Hz 1,520 W 70 dB (A)	924 mm 1,130 mm 1,400 mm 920 mm 1,020 mm 930 mm 1,450 mm 400 mm 508 kg 6,203 N 5,670 N 533 N 18.3 Hz 1,520 W 70 dB (A)
Installation should only be carried out by authorized installers and must comply with local and national building codes. Observe installation instructions when installing this machine. Alteration rights reserved.				

