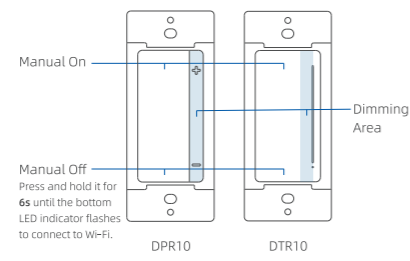


# Installation Instruction

Smart Dimmer Switch  
Single Pole



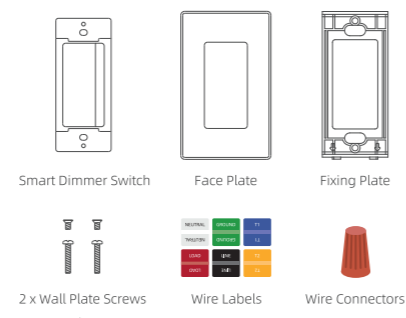
## PRODUCT INTRODUCTION



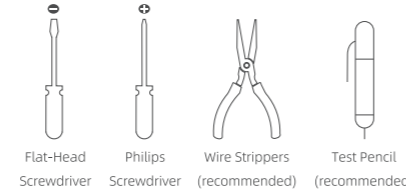
## LED INDICATOR

White	Power On Customizable in ELEGRP HOME App
Flashing White	Connecting to Wi-Fi
Flashing Red	Disconnected from Wi-Fi

## WHAT'S IN THE BOX



## TOOLS NEEDED



## CHECK COMPATIBILITY

Rating: 120VAC, 60Hz  
Operating Temperature: 0°C~40°C (32°F~104°F)  
Storage Temperature: -40°C~60°C (-40°F~140°F)  
Wiring Type: Single Pole



## Max Load for Each Bulb Type

Bulb Type	Dimmable LED / CFL	INC / HAL
Max Load	150W	450W

## Max Load for Multi-Devices (Exclusive for Incandescent)

In incandescent multi-dimmer installations, the reduction of the dimmer's capacity is required.

Single Device	Two Devices	More than 2 Devices
450W	400W	400W

**The white neutral wire is required to connect.** The device will not function if the neutral wire is not connected.

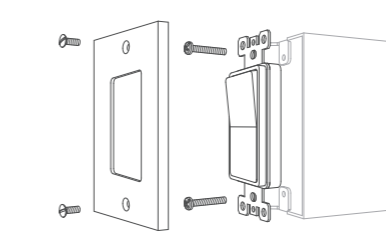
## BEFORE WE START



- WARNINGS:** To avoid fire, shock, or death, turn off power at circuit breaker or fuse and test that the power is off before wiring!
- CAUTIONS:** To reduce the risk of overheating and possible damage to other equipment, DO NOT install to control a receptacle, a motor operated appliance, a fluorescent lighting fixture, or a transformer-supplied appliance.
- AVERTISSEMENTS:** Pour éviter le feu, les chocs ou la mort, éteignez le disjoncteur ou le fusible et vérifiez que l'alimentation est coupée avant le câblage!
- ATTENTIONS:** Pour réduire le risque de surchauffe et d'endommagement possible d'autres équipements, NE PAS installer pour contrôler une prise, un appareil actionné par moteur, un appareil d'éclairage fluorescent ou un appareil alimenté par un transformateur.

**Consult a qualified electrician** if you are unfamiliar with electrical codes and regulations, or are uncomfortable performing the installation.

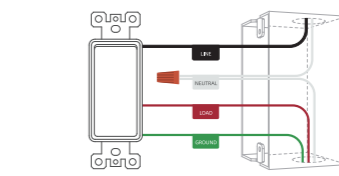
## REMOVE OLD SWITCH



After power is turned off, remove wall plate and switch mounting screws. Carefully pull out the old switch from the wall box (do not remove wires).

**Turn Off Power**  
Before removing, turn off power at circuit breaker or fuse, and use a test pencil to confirm whether power is off before wiring or servicing fixture!

## IDENTIFY & LABEL WIRES



Wire Label	Line	Load	Neutral	Ground
Wire Color	Black	Red or Black	White	Green or Bare Copper

- STEP 1: Identify and Label Neutral & Ground**  
Neutral wires are usually white and Ground wires are usually green / bare copper.
- STEP 2: Identify and Label Line & Load**  
Turn on power and test the remaining wires with a test pencil. When the test pencil glows, then that wire is line wire, but when the pencil does not glow at all, then that is load wire. Turn off the power at the circuit breaker before labelling the wires.

**Be Safe**  
To prevent severe shock or electrocution, make sure your fingers do not touch the wall box, wires or the screw terminals when power is restored!

90 mm

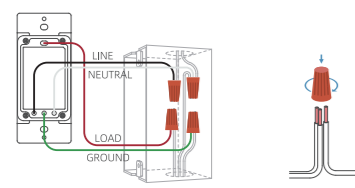
420 mm

## STRIP WIRES



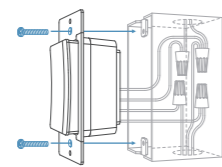
Disconnect wires from the switches, make sure that the ends of the wires from the wall box are straight (cut if necessary). Remove 0.6" (15mm) of insulation from each wire in the wall box.

## CONNECT SWITCH



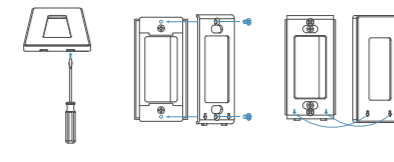
Match every wire as labeled  
Screw on clockwise  
Use provided wire connectors to connect wires in the wall box to the wires of the smart switch.

## FINISH WIRING



Form all wires carefully into wall box, and mount switch with mounting screws supplied.

## MOUNT WALL PLATE



Push a flat-head screwdriver into the slot at the bottom of the faceplate. Gently pry apart the two pieces. Use the short screws to mount the fixing plate. Push faceplate onto the fixing plate and snap it into place.

## TROUBLESHOOTING

- After installation, the switch does not turn on?**
  - Check that the bulb is properly installed and has not failed.
  - Check if the circuit breaker or fuse is connected properly.
  - Try swapping your Line and Load wires.

## Difficulty in connecting smart switch to a WiFi network?

- Make sure the WiFi network is a 2.4 GHz network.
- The WiFi connection may not have good coverage. Try moving your WiFi router closer to the smart switch.

**Refer to help center in the app for additional troubleshooting suggestions**

## FCC COMPLIANCE STATEMENT

This device complies with part 15 of the FCC Rules. Operation is subject to the following two conditions: (1) This device may not cause harmful interference, and (2) this device must accept any interference received, including interference that may cause undesired operation.

FCC Caution: Any Changes or modifications not expressly approved by the party responsible for compliance could void the user's authority to operate the equipment. This product must be installed and operated with a minimum distance of 20 cm between the radiator and user body. Contains Transmitter Module FCC ID: 2ANDL-CB25.

Note: The manufacturer is not responsible for any radio or TV interference caused by unauthorized modifications to this equipment. Such modifications could void the user's authority to operate the equipment. This equipment has been tested and found to comply with the limits for a Class B digital device, pursuant to part 15 of the FCC Rules. These limits are designed to provide reasonable protection against harmful interference in a residential installation. This equipment generates, uses and can radiate radio frequency energy and, if not installed and used in accordance with the instructions, may cause harmful interference to radio communications. However, there is no guarantee that interference will not occur in a particular installation. If this equipment does cause harmful interference to radio or television reception, which can be determined by turning the equipment off and on, the user is encouraged to try to correct the interference by one or more of the following measures:

- Reorient or relocate the receiving antenna.
- Increase the separation between the equipment and receiver.
- Connect the equipment into an outlet on a circuit different from that to which the receiver is connected.
- Consult the dealer or an experienced radio/TV technician for help.

## ISED CANADA COMPLIANCE STATEMENT

This device contains license-exempt transmitter(s)/receiver(s) that comply with Innovation, Science and Economic Development Canada's license exempt RSS(s). Operation is subject to the following two conditions:

- This device may not cause interference.
- This device must accept any interference, including interference that may cause undesired operation of the device.

L'émetteur/récepteur exempt de licence contenu dans le présent appareil est conforme aux CNR d'Innovation, Sciences et Développement économique Canada applicables aux appareils radio exempts de licence. L'exploitation est autorisée aux deux conditions suivantes :

- L'appareil ne doit pas produire de brouillage;
- L'appareil doit accepter tout brouillage radioélectrique subi, même si le brouillage est susceptible d'en compromettre le fonctionnement.

## RADIATION EXPOSURE STATEMENT

This equipment complies with RSS-102 radiation exposure limits set forth for an uncontrolled environment. This equipment should be installed and operated with minimum distance 20cm between the radiator & your body.

Déclaration d'exposition aux radiations:  
Cet équipement est conforme aux limites d'exposition aux rayonnements CNR-102 établies pour un environnement non contrôlé. Cet équipement doit être installé et utilisé avec un minimum de 20 cm de distance entre la source de rayonnement et votre corps.

CAN RSS-247/CNR-247

## ONE YEAR LIMITED WARRANTY

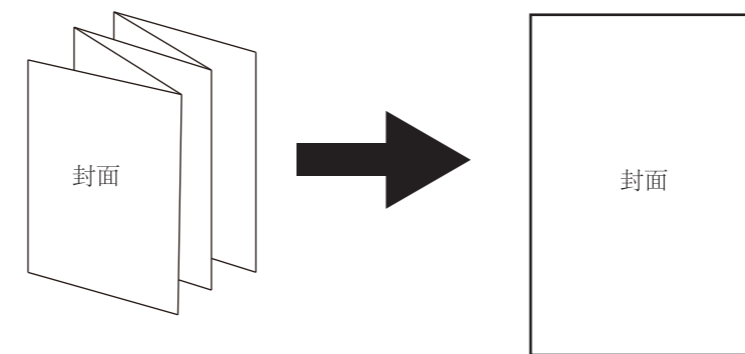
The warranty gives you specific rights and you may also have other rights, which vary in different states and countries. Our company warrants to the original consumer purchaser that this product is free of defects in materials and workmanship for 1 year from the purchase date. This warranty does not cover labor for removal or reinstallation of the product and is void on any product installed improperly or in an improper environment, overloaded, misused, opened, abused, or altered in any manner. Our company excludes incidental or consequential damages for breach of any warranty on this product. Some jurisdictions may not allow limitations on how long an implied warranty lasts or the exclusion or limitation of incidental or consequential damages, so the above exclusions or limitations may not apply to you.

**Contact Us**  
Website: www.elegrp.com  
Email: support@elegrp.com  
Search ELEGRP on social media  
Call us on: 866-267-3272 Mon-Fri 9:00-17:00 EST (US)

90 mm

420 mm

90\*60mm



## 技术要求:

- 材质: 150g纹理纸 (三好纸业 150G 细格), 双面彩色印刷。
- 公差: ±1mm
- 表面光洁, 无污迹、折痕; 切口平整无毛刺。

	签名	日期	名称	说明书	ELEGRP 益而益集团
设计	李星玉	2023.4.12	料号	G	
标准化			材料	150g纹理纸	版本
审核			产品型号		比例
批准	更改标识	更改人	日期	试图方式	1/1
					图纸

A2  
A3  
M  
版本  
更改记录

A0  
A3