



Welcome to the Kwikset family!

This guide will get you ready to install your new low profile dead bolt.

If you have any issues, please visit our support center: kwikset.com/support or call us at 1-800-327-5625.

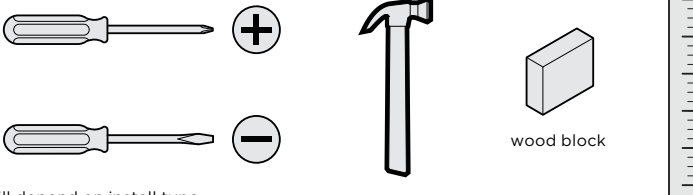
Installation and Reference Guide

This manual can be used to install a variety of dead bolt. Please determine your function type prior to installation.



Entry
(Keyed)

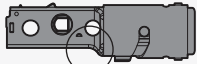
Recommended Tools



*Tools will depend on install type

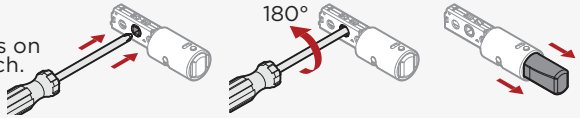
[Door Prep:](#) If you need help in preparing your door
[Drilling template:](#) If you need help in drilling your door

1 Extend latch bolt



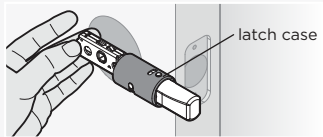
Make sure the curve is on the bottom of the latch.

Use a screwdriver to extend the latch bolt.

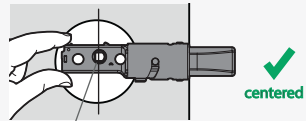


2 Adjust backset of the latch (if needed)

A Hold the latch in front of the door hole, with the latch case flush against the door edge.

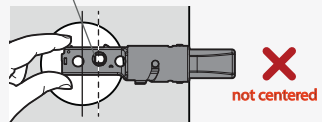


B If the D-shaped hole is centered in the door hole, no adjustment is required. Proceed to step 3.

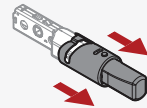
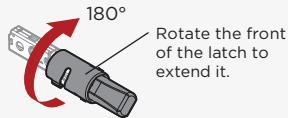


If the D-shaped hole is NOT centered, adjust latch. See "Latch Adjustment" (step C).

D-shaped hole

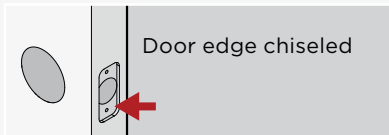


C Latch Adjustment (only if needed)

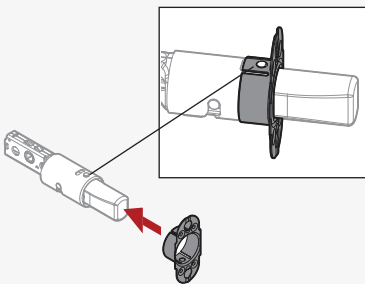


3 Install latch (chiseled door)

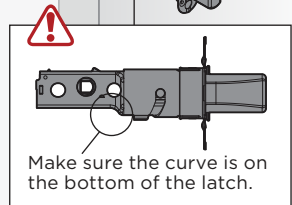
A



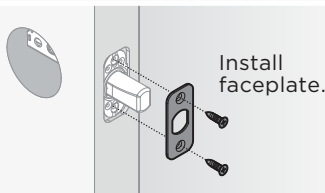
B Install backplate.



C



D



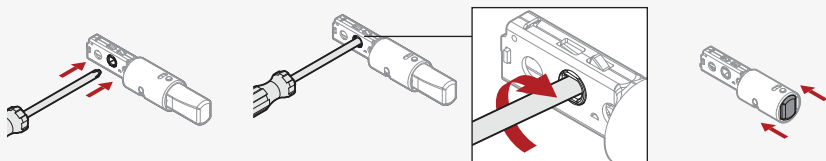
Install faceplate.

3 Install latch (non-chiseled door)

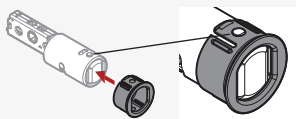
A



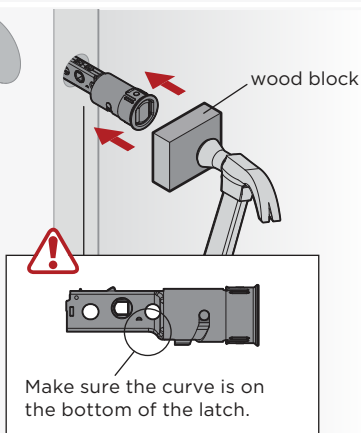
B Use a screwdriver to retract the latch bolt.



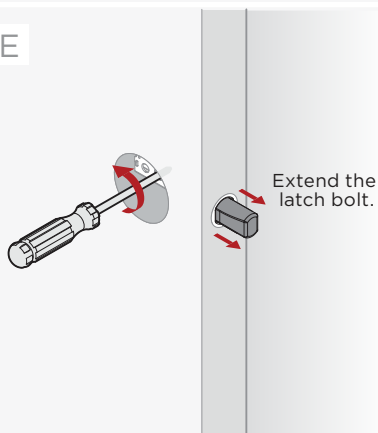
C Install drive-in collar.



D

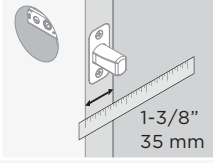


E

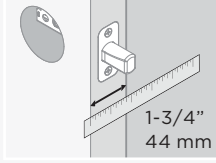


4 Determine mounting screws

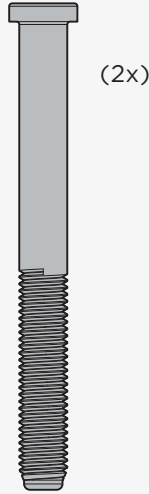
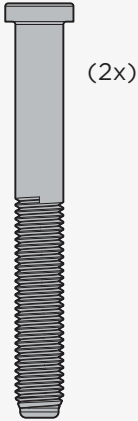
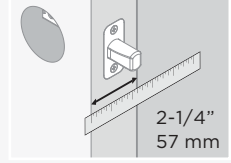
Measure the thickness of your door to determine the required mounting screws for step 6.



or



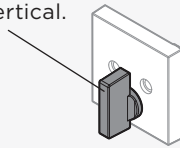
or



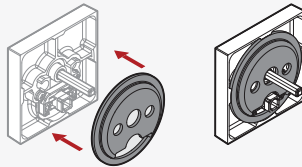
Call Kwikset to order a service kit for 2-1/4" (57 mm) thick doors. Use the screws provided in the kit.

5 Install deadbolt interior

A Make sure turnpiece is vertical.



B Mounting plate should be pre-installed on interior. If removed, re-install.



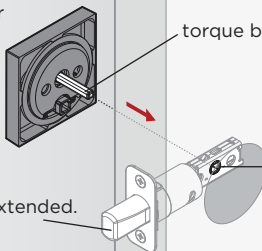
C

interior

torque blade

latch cam

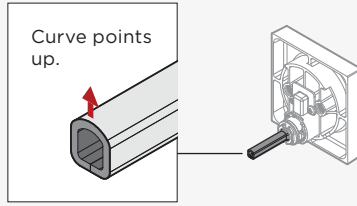
Make sure latch bolt is fully extended.



6

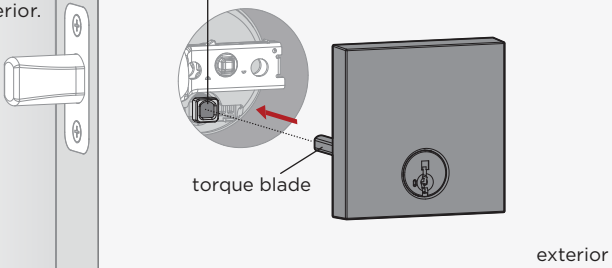
Install deadbolt exterior

A



B

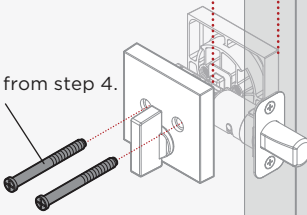
Support deadbolt interior while installing exterior.



C

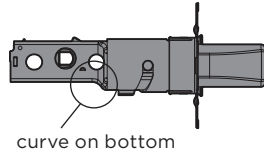
Keep parallel.

Use screws from step 4.



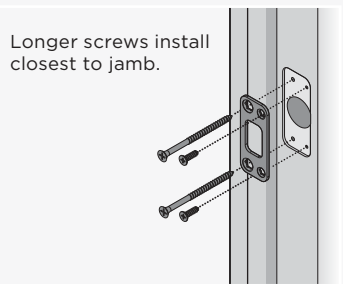
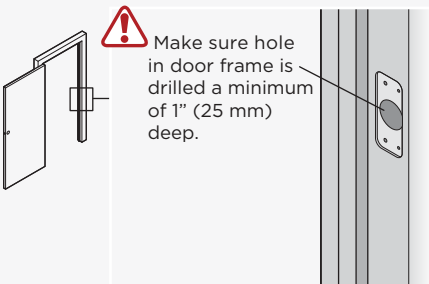
Troubleshooting

If the screws are difficult to tighten, make sure the latch is installed correctly.



7

Install strike on door frame



Note: The longer screws, 3" (76 mm) must be used to maintain highest security.

SmartKey Rekeying Instructions



**SMARTKEY
SECURITY™**

**ONE KEY
FOR ALL
YOUR LOCKS™**

Easily re-key
yourself

Reset tool
goes here



WITH PROTECTION AGAINST
ADVANCED BREAK-IN TECHNIQUES

The lock you can
re-key yourself in
seconds for any
situation, including:



**Recently
Moved**



**Lost
Keys**



**Multiple
Doors**



**Carry
Less Keys**

For rekeying instructions, you can also visit:

<https://www.kwikset.com/support/answers/how-to-re-key-your-smartkey-security-locks>

If you have any issues, please visit our
support center: [kwikset.com/support](https://www.kwikset.com/support)
or call us at 1-800-327-5625.



WARNING: This Manufacturer advises that no lock can provide complete security by itself. This lock may be defeated by forcible or technical means, or evaded by entry elsewhere on the property. No lock can substitute for caution, awareness of your environment, and common sense. Builder's hardware is available in multiple performance grades to suit the application. In order to enhance security and reduce risk, you should consult a qualified locksmith or other security professional.