



ENGLISH

SMARTCODE 909

TOUCHPAD ELECTRONIC DEADBOLT

Installation and User Guide

Required tools

4 AA Batteries Ruler Phillips head screwdriver

Additional Tools (depending on application)

Hammer Wood block

Kwikset
1-800-327-5625
www.kwikset.com

Parts in the box

Latch 	Exterior Assembly 	Interior Assembly
Strike 	Adapter ring 	Mounting Plate
Keys 	SmartKey Tool 	Fasteners 03809 46780
		48654 27526 64109

"B" is not included. If needed, please contact Kwikset to order a drive-in latch for your lock.

1 Prepare the door and check dimensions

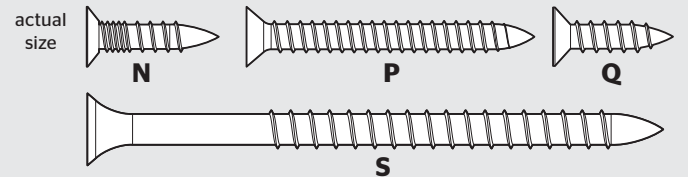
If drilling a new door, use the supplied template and the complete door drilling instructions available at www.kwikset.com/doorprep.

<p>A Measure to confirm that the hole in the door is either 2-1/8" (54 mm) or 1-1/2" (38 mm).</p>	<p>B Measure to confirm that the backset is either 2-3/8" or 2-3/4" (60 or 70 mm).</p>	<p>C Measure to confirm that the hole in the door edge is 1" (25 mm).</p>	<p>D Measure to confirm that the door is between 1-3/8" and 1-3/4"* (35 mm and 44 mm*) thick.</p>
--	---	--	--

Note: Additional door preparation may be required for doors with 1-1/2" (38 mm) holes. Consult the deadbolt drilling instructions at www.kwikset.com/doorprep.

*Service kits for 2-1/4" (57 mm) thick doors are available through Kwikset.

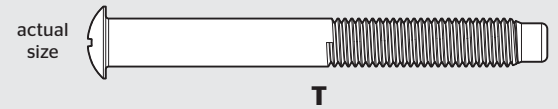
2 Install the latch and strike



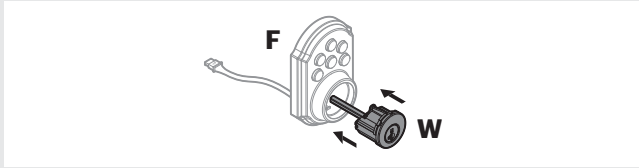
<p>A Is the door edge chiseled?</p> <p>YES Use latch "A". If the latch bolt is not already extended, extend the latch bolt as shown.</p> <p>NO Use latch "B" (not included). If the latch bolt is not already extended, extend the latch bolt as shown.</p>	<p>B Hold the latch in front of the door hole, with the latch face flush against the door edge.</p>	<p>D Which latch are you installing?</p> <p>Latch "A" or Latch "B"</p>
<p>C Are the latch holes centered in the door hole?</p> <p>YES No adjustment is required. Proceed to next step.</p> <p>NO Rotate latch face as shown to extend latch.</p>	<p>E Install strike on the door frame.</p> <p>⚠ Make sure the hole in the door frame is drilled a minimum of 1" (25 mm) deep.</p>	



3 Install the exterior keypad

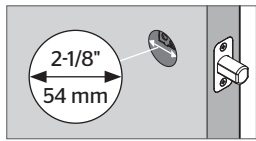


A Insert cylinder into keypad.

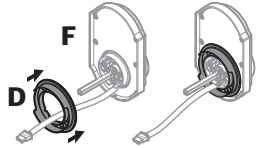


B What is the diameter of the hole in the door?

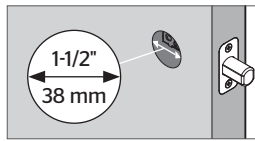
Diameter is 2-1/8" (54 mm)



"D" is required for installation. Install "D" on "F".



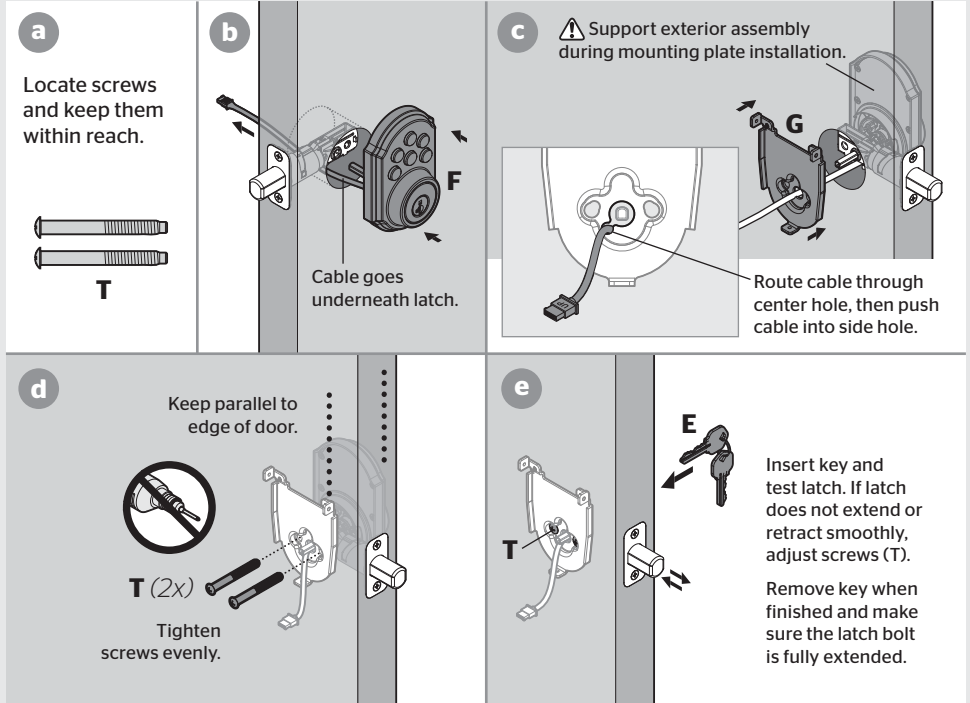
Diameter is 1-1/2" (38 mm)



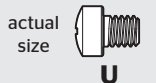
"D" is not needed for installation. Discard "D".



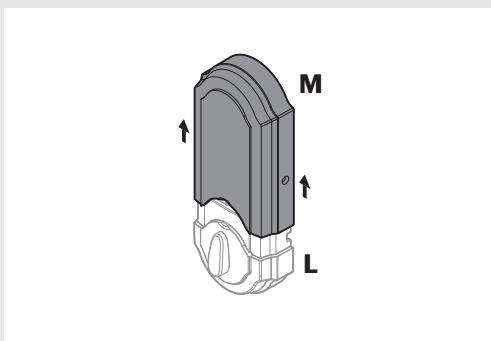
C Install exterior keypad and mounting plate.



4 Install the interior assembly



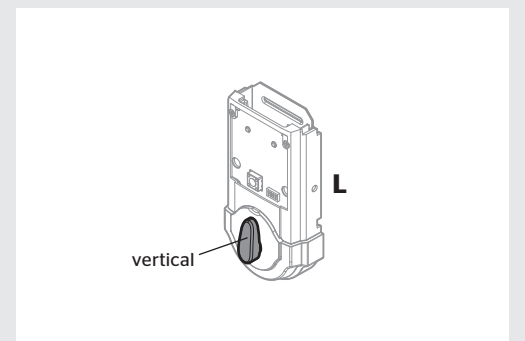
A Remove battery cover.



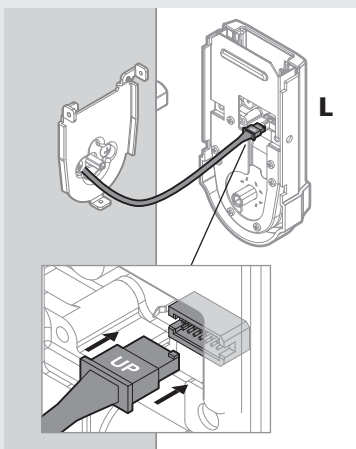
B Remove battery pack.



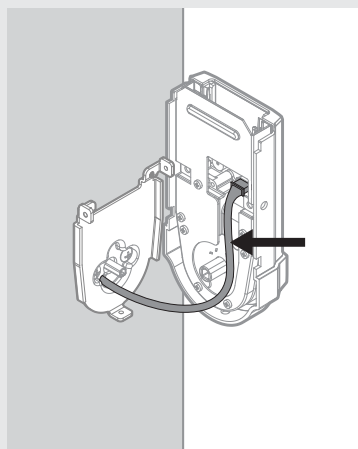
C Make sure the turnpiece is in the vertical position.



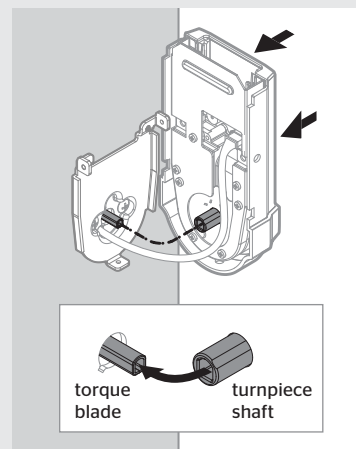
D Connect cable. Ensure tight cable connection.



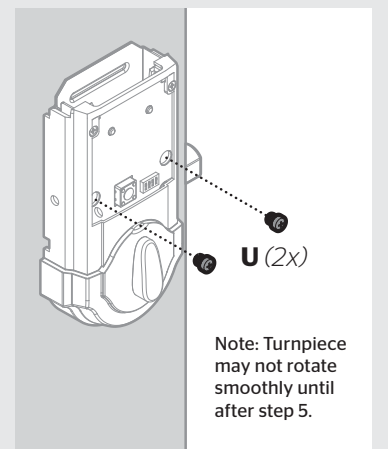
E Lay cable flat against the interior housing.



F Push turnpiece shaft onto torque blade.



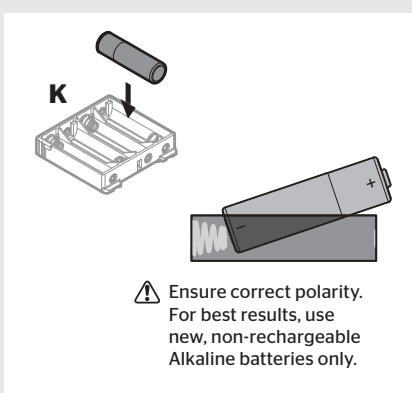
G Secure interior assembly with supplied screws.



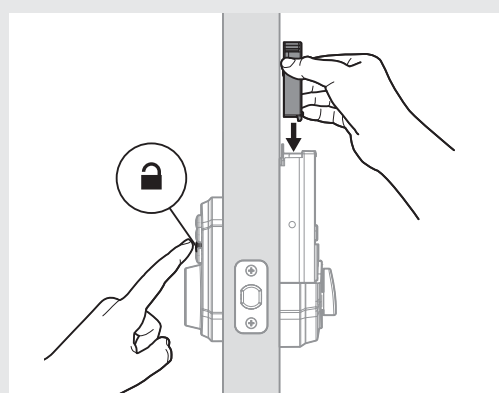
5 Install the batteries and perform the door handing process

This step will teach your lock the orientation of your door and is crucial to lock operation.

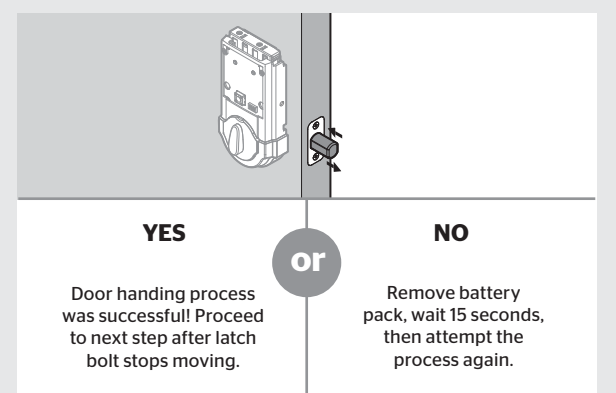
A Install 4 AA batteries in battery pack.



B Press and HOLD the Lock button while installing battery pack. Hold button until the latch bolt starts moving on its own.



C Did the latch bolt retract and extend on its own when the battery pack was installed?



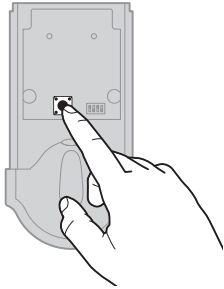
6 Add user codes (8 max)

Programming Timeout

If no button is pressed for five seconds, the system will time out and you will need to restart the procedure.

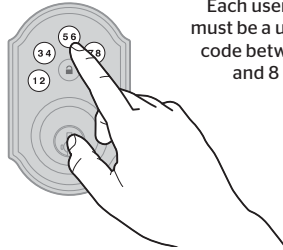
- A** Make sure the door is open. Press the Program button the number of times that corresponds to the user code position being programmed.

Example: If programming the third code, press the button three times.

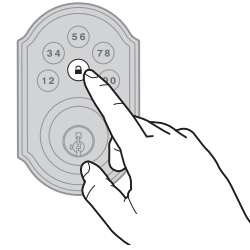


- B** Enter user code. A total of 8 user codes may be programmed.

Each user code must be a unique code between 4 and 8 digits.

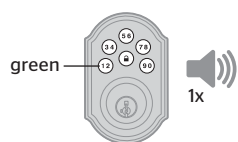


- C** Press Lock button once.



- D** What lights and sounds does the lock produce?

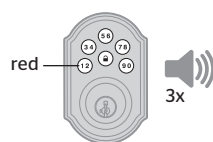
One green flash with one beep*



Programming was successful.

or

Three red flashes with three beeps*



Programming was unsuccessful.

Make sure the user code is not a duplicate and that it is between 4 and 8 digits during your next attempt.

or

Two beeps*



Programming time out.

Make sure not to pause for more than 5 seconds during programming.

*Beeping sound will only be heard if switch #3 (on the lock interior) is in the on position. See "Switches and Status LED Colors" on page 4.

Mastercode

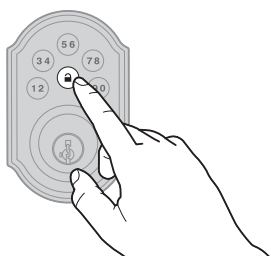
For enhanced security, a mastercode may be used when adding and deleting user codes. For more information about the mastercode, download the Programming and Troubleshooting Guide on the SmartCode 909 page at www.kwikset.com.

7 Test the lock (review normal operation)

Confirm that the code(s) added in previous step can unlock the door.

Locking the Door

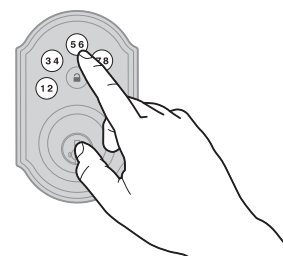
Press Lock button once.




Unlocking the Door

Enter user code.

Tip: You can press the Lock button before entering your user code to light up the keypad at night.



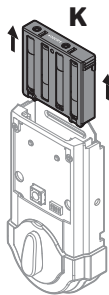
8 Re-key the lock (if needed) and install the battery cover

actual size 

- A** Re-key the lock (if needed).

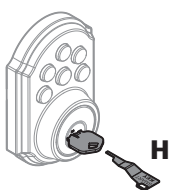
a

IMPORTANT: Remove battery pack before re-keying.



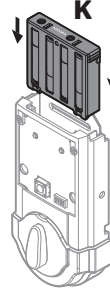
b

Re-key the lock to work with your existing key. See the supplied SmartKey Re-key instructions for more information.



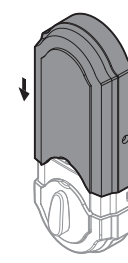
c

Reinstall battery pack.

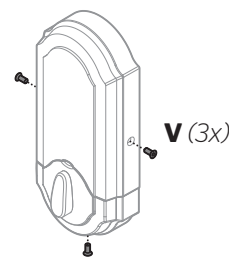


- B** Install the battery cover.

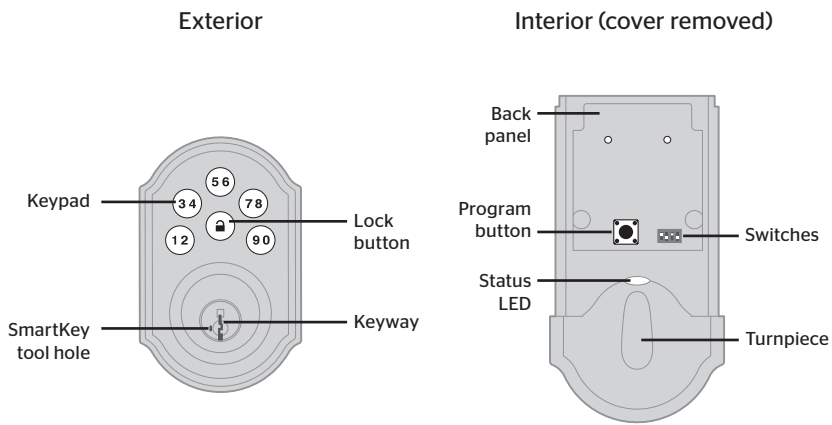
a



b



SmartCode at a Glance

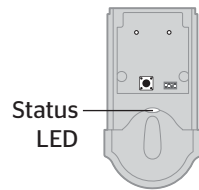
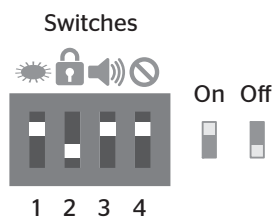


System Alerts

Alert	Reason	Solution
Keypad flashes red 1 time with 1 beep*	Door jammed while attempting to lock.	Manually re-lock door. If needed, reposition strike.
Keypad flashes red 3 times with 3 beeps*	Unsuccessful programming.	Attempt programming procedure again.
	One incorrect code entered.	Re-enter code.
	No user code programmed.	Program at least one user code.
Keypad flashes red 10 times with 10 beeps*	Low battery.	Replace batteries.
Lock beeps 2 times.	Programming timeout.	Attempt programming procedure again, making sure not to pause for more than 5 seconds.
Keypad flashes red 3 times.		
Keypad flashes red 6 times with 6 beeps*.		
Keypad flashes red 15 times with 15 beeps*	Three incorrect codes entered within one minute.	Re-enter code after 60 second keypad lockout.

*Beeping sound will only be heard if switch #3 is on.

Switches and Status LED colors



Switch	Function
1	Door lock status LED blinks every 6 seconds
2	Lock automatically re-locks door 30 seconds after unlocking. Disabled if no codes are programmed.
3	Audio
4	Not used

Color	Lock Status
Blinking green	Unlocked
Blinking amber	Locked
Blinking red	Low battery
Solid red	Door handing process did not work properly. See the online Programming and Troubleshooting Guide.

Troubleshooting

A complete SmartCode 909 Programming and Troubleshooting Guide is available at www.kwikset.com.

Deleting a user code

In order to delete a user code, you must override the code by adding a different user code in the same position. For example, if you want to delete the third code, add a different user code in position three.

⚠ Test the old user code to make sure it can no longer unlock the door.

If you cannot remember the user code position, you may wish to perform a factory reset to delete all codes associated with the lock.

Factory Reset

A factory reset will delete all codes associated with the lock.

1 Remove battery pack.

2 Press and HOLD the Program button while reinserting the battery pack. Keep holding the button for 30 seconds until the lock beeps and the status LED flashes red.

3 Press the Program button once more. When the LED flashes green and you hear one beep, the lock has been reset.

4 Perform the door handing process again to teach the lock the orientation of the door, and add user codes to your lock.

Important Safeguards

1. Read all instructions in their entirety.
2. Familiarize yourself with all warning and caution statements.
3. Remind all family members of safety precautions.
4. Protect your user codes and mastercode.
5. Dispose of used batteries according to local laws and regulations.

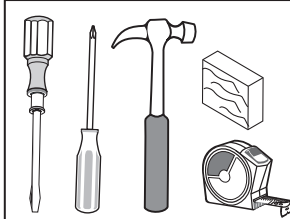
⚠ **CAUTION:** Prevent unauthorized entry. Since anyone with access to the back panel can change the user codes, you must restrict access to the back panel and routinely check the user codes to ensure they have not been altered without your knowledge. The use of a mastercode can help protect your system's settings.

⚠ **WARNING:** This Manufacturer advises that no lock can provide complete security by itself. This lock may be defeated by forcible or technical means, or evaded by entry elsewhere on the property. No lock can substitute for caution, awareness of your environment, and common sense. Builder's hardware is available in multiple performance grades to suit the application. In order to enhance security and reduce risk, you should consult a qualified locksmith or other security professional.

IMPORTANT INSTALLATION INSTRUCTIONS
INSTRUCTIONS D'INSTALLATION IMPORTANTES
IMPORTANTES INSTRUCCIONES DE INSTALACIÓN
INSTRUÇÕES IMPORTANTES DE INSTALAÇÃO
重要安装指南
重要安装指示

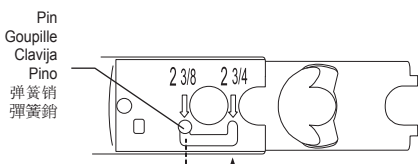
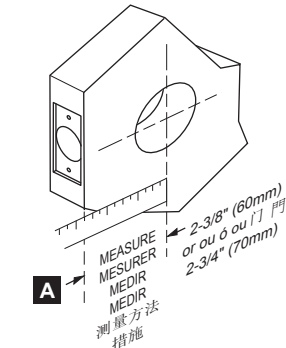
LEVER - PRIVACY & PASSAGE
 WITH 6-WAY LATCH
44594 / 01 CP

? 1-800-327-5625
 USA and CANADA
 www.kwikset.com



Required tools
Outils nécessaires
Herramientas requeridas
Ferramentas necessárias
 所需工具
 需要的工具

1 PREPARE LATCH AND INSTALL
PRÉPAREZ LE VERROU ET INSTALLEZ-LE
PREPÁRESE EL PASADOR E INSTÁLELO
PREPARE O TRINCO E INSTALE
 准备并安装锁栓
 準備並安裝鎖栓



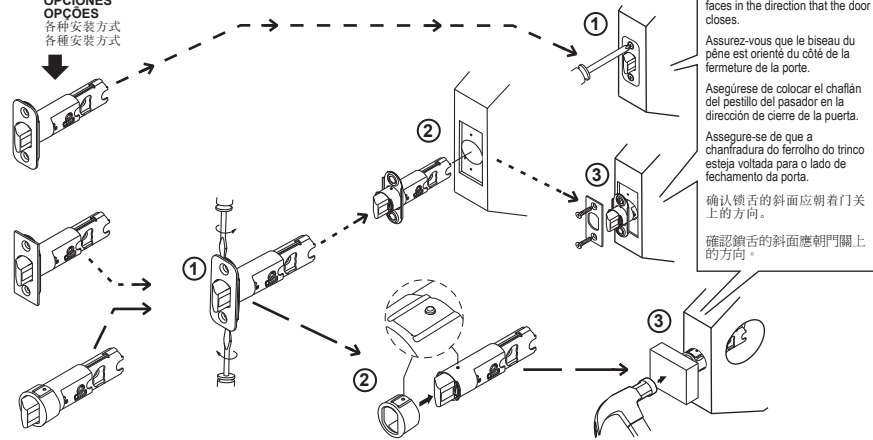
B
 If backset of door measured 2-3/4" (70mm), adjust latch as follows: Grasp the spring pin and move it to the 2-3/4" slot.
 Si l'écartement de la porte mesuré est de 2-3/4" (70 mm), réglez le verrou comme suit : Se saisir de la goupille-ressort et déplacer la goupille-ressort à l'encoche de 2-3/4" (70mm)
 Si la distancia al centro de la puerta que se midió es de 2-3/4" (70 mm), ajuste el pasador de la siguiente manera. Agarre la clavija del resorte y mueva la clavija del resorte hasta la ranura de 2-3/4" (70mm).

Caso seja necessária uma distância de 2-3/4 pol. (70 mm) do buraco da chave, ajuste o trinco da seguinte maneira: pegue o pino de mola e mova-o para a ranhura de 2-3/4 pol. (70 mm).

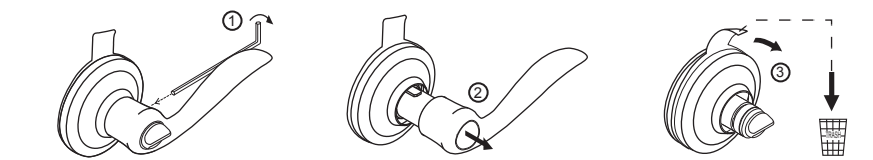
若鎖心距離為 2-3/4 (70mm)，請按照以下步驟調整鎖栓：抓住彈簧銷，將它移到 2-3/4" 槽中。

若鎖心距離為 2-3/4 (70mm)，請依以下步驟調整鎖栓：抓住彈簧銷，將它移到 2-3/4" 槽中。

C OPTIONS
OPTIONS
OPCIONES
OPÇÕES
 各种安装方式
 各種安裝方式



2 REMOVE LEVER AND COVER FROM LEVER ASSEMBLY
ENLEVEZ LE LEVIER ET LE COUVREZ DE L'ASSEMBLEE DE LEVIER
QUITE LA MANIJA Y CUBRALA DE UNIDAD DE LA MANIJA
REMOVA A MAÇANETA E A TAMPA DO CONJUNTO DA MAÇANETA.
 将水平把手和盖板从把手组中拆下
 將水平把手和蓋板從把手組中拆下



3 FOR LEFT HAND DOORS - ONLY
POUR DES PORTES DE MAIN GAUCHE - SEULEMENT
PARA LAS PUERTAS DE LA MANO IZQUIERDA - SOLAMENTE
PARA PORTAS DE MÃO ESQUERDA APENAS
 仅适用于在门左边安装
 僅適用於在門左邊安裝

Switch lever on exterior assembly as follows.
 1. Insert wrench into set screw hole and loosen set screw.
 2. Remove lever, replace with other lever and retighten set screw.

Échangez le levier, de l'assemblée extérieure comme suit.
 1. Insérez l'outil dans le trou de vis de réglage et détachez la vis de réglage. 2. Enlevez le levier, le remplacez avec l'autre levier et serrez la vis de réglage.

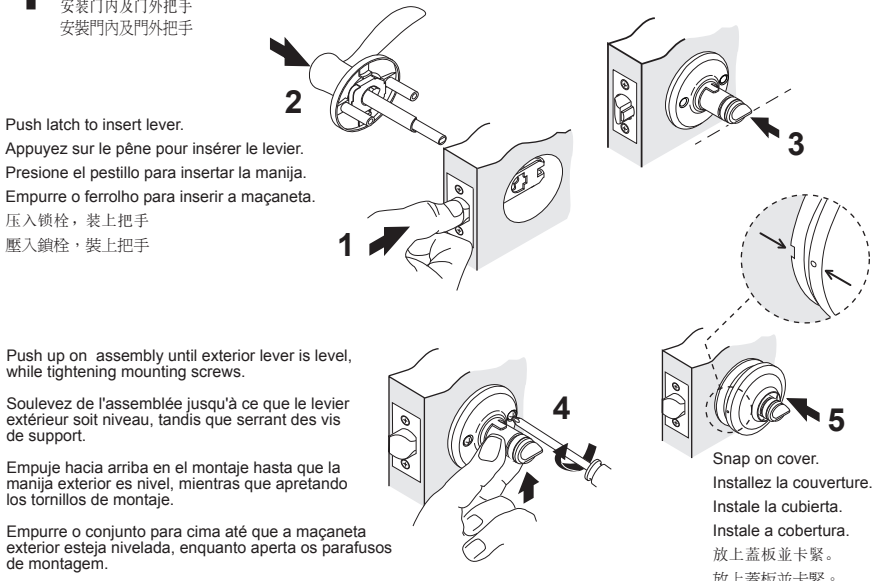
Intercambie la manija de la unidad exterior, según lo demostrado.
 1. Inserte la llave en el agujero del tornillo de presión y afloje el tornillo de presión. 2. Quite la manija, sustitúyala por la otra manija apriete el tornillo de presión.

Mude a maçaneta do conjunto exterior conforme mostrado.
 1. Insira a ferramenta no orifício do parafuso de fixação e afrouxe-o.
 2. Retire a maçaneta, substitua-a pela outra e reaperte o parafuso de fixação.

按照以下步驟調換門外把手：
 1. 把扳手插進固定螺絲孔，鬆開螺絲。 2. 將把手拆下，換上另一只把手，然後重新拧紧上固定螺絲。

依照以下步驟調換門外把手：
 1. 把扳手插進止付螺絲孔，鬆開螺絲。 2. 將把手拆下，換上另一支把手，然後重新鎖上止付螺絲。

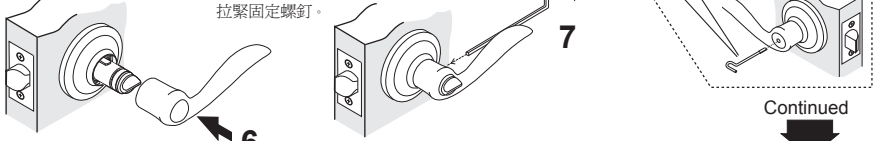
4 INSTALL EXTERIOR & INTERIOR ASSEMBLIES
INSTALLEZ ASSEMBIES EXTÉRIEUR ET INTÉRIEUR
INSTALE ASSEMBIES EXTERIOR Y INTERIOR
INSTALE OS CONJUNTOS EXTERIOR E INTERIOR
 安装门内及门外把手
 安裝門內及門外把手



Keep handy for emergency unlocking.
 Ayez comode en cas de déverrouillage d'urgence.
 Mantenga cerca, para abrir en casos de emergencia.
 mantenha à mão para destravar em caso de emergência.
 将开锁针放在手边，以备紧急开锁之用。
 將開鎖針備妥，以備緊急開鎖之用。

Install lever.
 Installez le levier.
 Instale la manija.
 Instale a maçaneta.
 装上把手。
 裝上把手。

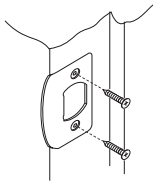
Tighten set screw to secure lever.
 Apriete el tornillo de presión, para asegurar la manija.
 Serrez la vis de réglage, pour fixer le levier.
 Aperte o parafuso de fixação para prender a maçaneta.
 拉緊固定螺釘。
 拉緊固定螺釘。



Continued

5 INSTALL STRIKE INSTALLEZ LA GÂCHE INSTALE LA PLACA DEL RECIBIDOR INSTALE A TESTA DA FECHADURA

安装挡板
 安裝擋板



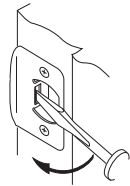
Adjust tang as needed.

Ajustez la languette autant que de besoin.

Ajuste a langueta.

Ajuste a lingüeta conforme necessário.

根据需要调整卡舌
 視需要調整卡榫



WARNING: This Manufacturer advises that no lock can provide complete security by itself. This lock may be defeated by forcible or technical means, or evaded by entry elsewhere on the property. No lock can substitute for caution, awareness of your environment, and common sense. Builder's hardware is available in multiple performance grades to suit the application. In order to enhance security and reduce risk, you should consult a qualified locksmith or other security professional.

AVERTISSEMENT: Le fabricant tient à vous aviser qu'aucun verrou ne peut à lui seul offrir une sécurité complète. Ce verrou peut être mis hors d'état par la force ou des moyens techniques ou être évité par l'utilisation d'une autre entrée sur la propriété. Aucun verrou ne peut remplacer la surveillance de votre environnement et le bon sens. La quincaillerie pour le constructeur est offerte selon différents grades de performance pour différentes applications. Afin d'augmenter la sécurité et de réduire le risque, vous devriez consulter un serrurier qualifié ou un autre professionnel de la sécurité.

ADVERTENCIA: Este Fabricante hace saber que no hay cerrajos que puedan proporcionar completa seguridad por sí mismos. Puede hacerse que falle este cerrajo forzándolo o utilizando medios técnicos, o puede evadirse entrando por otra parte de la propiedad. No hay cerrajos que puedan hacer de sustitutos para la precaución, el estar al tanto del entorno, y el sentido común. Pueden obtenerse piezas de ferretería de constructor con diversos grados de rendimiento para ajustarse a la aplicación. Para realizar la seguridad y reducir los riesgos, debe consultar con un cerrajero capacitado u otro profesional de seguridad.

AVISO: O fabricante adverte que nenhuma fechadura oferece, por si só, segurança completa. Esta fechadura pode ser aberta por arrombamento ou meios técnicos, ou evitada por meio de outro ponto de entrada na propriedade. Nenhuma fechadura é capaz de substituir a cautela, a conscientização do ambiente e o bom senso. Ferragens para construtores estão disponíveis em vários níveis de desempenho para atender à aplicação específica. Para aumentar a segurança e reduzir o risco, consulte um serralheiro ou outro profissional em segurança qualificado.

警告: 本制造商要提醒您，沒有任何鎖能絕對保證安全。外人可能用暴力或技術手法使這鎖失效，或是從建築物的其它地方入侵。不管是哪一種鎖，都不能取代謹慎、常識以及對周圍環境保持警覺。製造商的产品有各種不同的功能等級，能適合不同的需要。為了鞏固安全，降低風險，您應該諮詢合格的鎖匠或其他專業保全業者的意見。

警告: 製造商要提醒您，沒有任何鎖能保證絕對的安全。外人可能用暴力或技術手法使這個鎖失效，或是從建築物的其他地方入侵。不管是哪一種鎖，都不能取代謹慎、對周遭環境保持警覺以及常識。製造商的产品有各種不同的功能等級，能適合不同的需要。為了鞏固安全，降低風險，您應該諮詢合格鎖匠或其他專業保全業者的意見。

For assistance or warranty information,
USA and CANADA:
 Call 1-800-327-5625
 or visit www.kwikset.com

Pour de l'aide ou des informations sur la garantie,
USA et CANADA:
 veuillez appeler le 1-800-327-5625
 ou visiter www.kwikset.com

Si desea ayuda o información sobre la garantía,
USA y CANADA:
 llame al 1-800-327-5625
 o visite www.kwikset.com

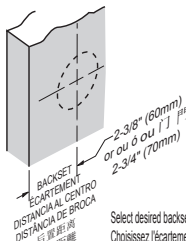
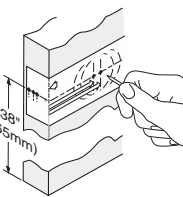
Para assistência ou informações sobre garantia,
EUA e CANADA:
 Ligue para 1-800-327-5625
 ou visite o site www.kwikset.com

如有疑问，请联系当地经销商或当地百得分公司

如有疑问，請聯絡當地經銷商或當地百得分公司

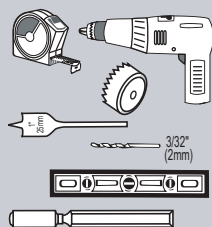
DOOR DRILLING • PERÇAGE DE LA PORTE • PERFORACIÓN DE PUERTAS • FUROS PERFURANDO • 在门上钻孔 • 在門上鑽孔

1 Mark Holes on Door Marquez les Trous sur la Porte Marque los Orificios en la Puerta Marque os orificios na porta 在门上为孔画线 在門上畫出鑽孔記號

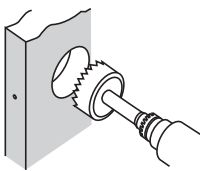


Select desired backset
 Choisissez l'écartement désiré
 Seleccione la distancia al centro deseado
 Marque os orificios na porta
 在门上画出钻孔记号
 在門上畫出鑽孔記號

**Required tools:
 Outils nécessaires:
 Herramientas requeridas:
 Ferramentas necessárias**
 所需工具
 需要的工具



2 Drill Hole in Door Face Percez un trou dans la face avant de la porte Perfore el orificio en la cara de la puerta Faça um orificio na face da porta 在门面上钻孔 在門面鑽孔



Using a 2-1/8" (54mm) diameter hole saw, drill from one side until the point of drill just breaks through, then complete hole from the other side to prevent splintering.

À l'aide d'une mèche-scie pour trou de 2-1/8" (54 mm) de diamètre, percez à partir d'un côté jusqu'à ce que les dents de la scie apparaissent de l'autre côté puis, pour éviter d'avoir des échardes, finissez à partir de l'autre côté.

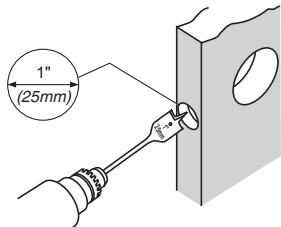
Usando una broca con sierra para orificio de 2-1/8" (54mm) de diámetro, taladre de un lado hasta que la punta de la brocasalga al otro lado, luego complete el orificio del otro lado para prevenir astillas.

Usando uma broca de serra para orificios de 2-1/8 pol. (54 mm), perfure de um lado até que a ponta da broca saia do outro lado. Então, conclua o orificio do outro lado para evitar lascas.

用直径为2-1/8" (54mm)的孔钻从门的一边钻入，为防门板破裂，钻头将穿透时从另一面完成钻孔。

用一支直徑 2-1/8" (54mm) 的挖孔鋸從門的一面鑽孔，直到鑽頭尖端剛好穿透門板為止，然後從另一面往回挖，以避免孔邊碎裂。

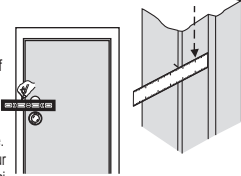
3 Drill Hole in Door Edge Percez un trou dans le rebord de la porte Perfore el orificio en el canto de la puerta Faça um orificio na borda da porta 在门边钻孔 在門的側面鑽孔



1" (25mm)

4 Mark Hole for Strike Plate Marquez le Trou pour la Gâche Marque el Orificio para la Placa del Recibidor Marque o orificio para a testa da fechadura 为锁扣面板做画线 畫出擋板鑽孔的位置

Extend mark across jamb to door stop. Locate center of strike hole by measuring back from door stop, 1/2 the thickness of door.



Continuez la marque sur le chambranle jusqu'à la porte. Trouvez le centre du trou pour la gâche en mesurant sur e champ de la porte à la moitié de l'épaisseur de celle-ci.

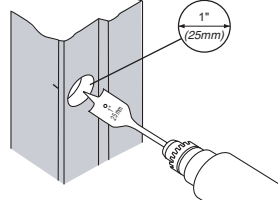
Extienda la marca a través del marco hasta el parador de la puerta. Ubique el centro del orificio del recibidor marcando desde el parador la mitad del espesor de la puerta.

Continue a marca ao longo do marco até o batente. Localize o centro do orificio da testa da fechadura medindo, a partir do batente, a metade da espessura da porta.

延伸标记，越过门柱到达门止，从门止往回量，至门板厚度的1/2为扣板孔。

將記號從門柱延長至門擋。從門擋往回量，在門板 1/2 厚度的地方做記號，作為鑽孔的中心點。

5 Drill Strike Hole Percez le Trou pour la Gâche Perfore el Orificio del Recibidor Faça o orificio da testa da fechadura 钻锁扣盒孔 鑽擋板孔



Drill hole 5/8" (16mm) deep.

Percez un trou de 5/8" (16 mm) de profondeur.

Perfore un orificio de 5/8" (16mm) de profundidad.

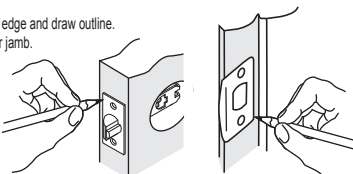
Faça um orificio de 5/8 pol. (16 mm) de profundidade.

孔深 5/8" (16mm)。

鑽一個深 5/8" (16mm)。

6 Face and Strike Plate Cutouts Découps pour La Plaque de Recouvrement et La Gâche Aberturas de la Placa Frontal y del Recibidor Recortes da placa frontal e da testa da fechadura 面板及锁扣面板槽 鑿出鎖栓固定板和擋板的凹槽

Align latch face plate on door edge and draw outline. Repeat for strike plate on door jamb.



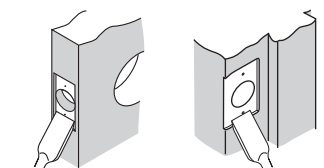
Alignez la plaque de recouvrement entourant le pêne sur le bord de la porte et tracez le pourtour. Répétez l'opération pour l'emplacement de la gâche sur le chambrane de la porte.

Alinee la placa frontal del pasador en el borde de la puerta y marque su silueta. Haga lo mismo con la placa del recibidor en el marco de la puerta.

Alinhe a placa frontal do ferrolho na borda da porta e marque o seu contorno. Faça o mesmo com a testa da fechadura e o marco da porta.

将插销面板放在门边画出边沿线，在门柱上同样画出锁扣面板线条。

將固定板貼緊門邊，描出輪廓。同樣地，在門柱上畫出擋板輪廓。



Chisel out area until face plate sits flush and drill 3/32" (2mm) diameter pilot holes for screws. Repeat for strike plate.

Creusez l'emplacement au ciseau à bois jusqu'à ce que la plaque de recouvrement s'y encaste et soit de niveau avec l'épaisseur ouchamp de la porte. Percez des trous de guidage de 3/32" (2 mm) de diamètre pour les vis. Répétez l'opération pour la gâche

Corte el área con el cincel hasta que la placa frontal se asiente al ras y luego perfore orificios guía de 3/32" (2mm) de diámetro para los tornillos. Repita para la placa del recibidor.

Selecione a distância desejada do buraco da chave.

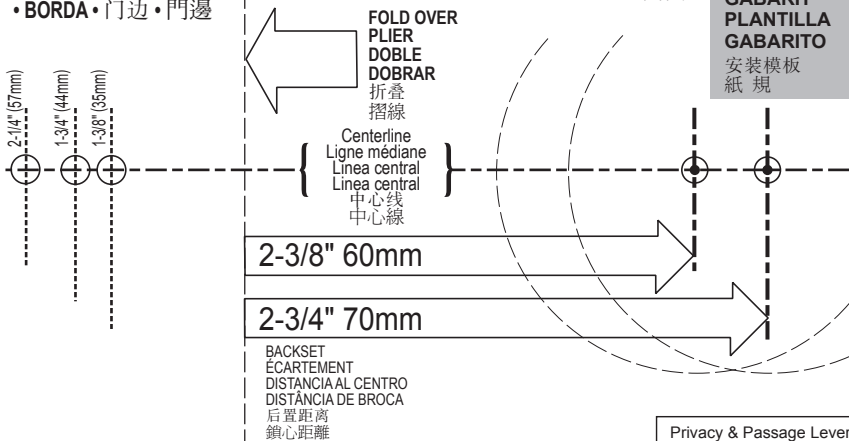
凿出凹槽，直到固定板可以完全嵌入为止，然后再钻出直径 3/32" (2mm) 的定位孔，供拧螺丝之用。以同样方式凿出挡板凹槽。

鑿出凹槽，直到固定板可以完全嵌入為止，然後再鑽出直徑 3/32" (2mm) 的導孔，供鎖螺絲之用。以同樣方式鑿出擋板凹槽。

• EDGE • CHAMP • BORDE
 • BORDA • 门边 • 門邊

• FACE • FACE • FRENTÉ • FRENTÉ • 门正面 • 門面

**TEMPLATE
 GABARIT
 PLANTILLA
 GABARITO**
 安裝模板
 紙規



Privacy & Passage Lever
44594 / 01 CP