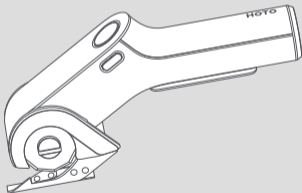


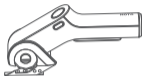
HOTO EdgeFlow Cordless Electric Scissors





Visit our website for more Cool Tools
(www.hototools.com)

01 Package Content



HOTO EdgeFlow Cordless
Electric Scissors x 1



Storage Bag x 1



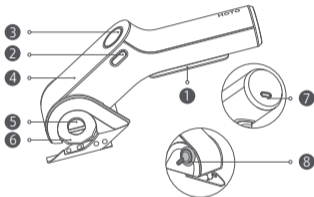
Safety Warning x 1
User Manual x 1



USB-C
Charging Cable x 1

02 Package Overview

Read this manual carefully before use, and retain it for future reference. Thank you for choosing HOTO EdgeFlow Cordless Electric Scissors.



1 ON/OFF Switch

2 Lock Off Button

3 BOOST Button

4 Display Screen

5 Blade-change Switch

6 Blade

7 USB-C Charging Port

8 Sharpen Switch

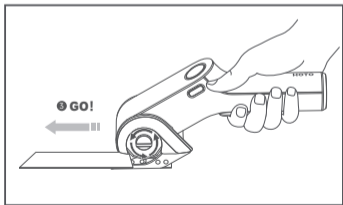
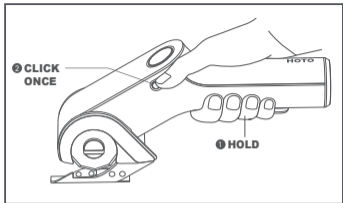
03 User Manual

Product Usage

This tool is designed for cutting flexible and soft materials with a thickness of no more than 6.5 mm, such as carpets, PVC, cardboard, leather, fabrics, and similar materials.

Start the Device

- This tool is locked off to prevent accidental starting.
- To start the tool, please depress the ON/OFF Switch then the Lock Off Button and release the Lock Off Button.
- If the Lock Off Button is not clicked, the device will power on but will not boot; if the Lock Off Button is not released, the screen will display an E1 error.

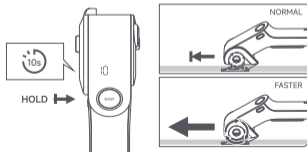


Notes:

1. Keep the Blade sharp for cleaner, faster cuts and reduced motor load during operation.
2. When cutting materials with adhesive backing, clean the Blade regularly. Adhesive residue can accumulate, reducing cutting quality and overloading the motor.
3. When cutting curves, avoid tilting the tool; keep the Blade perpendicular to the workpiece.
4. Do not apply excessive forward pressure when pushing the tool. With practice, you will learn how to achieve smoother and easier cuts.
5. In low-battery protection mode (battery level $\leq 5\%$), the device cannot operate in normal mode.

BOOST Mode

1. The BOOST Button is used to activate the high-power cutting mode.



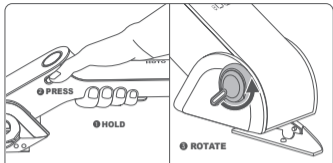
2. When encountering materials that are too hard or thick, or if the blade gets stuck during cutting, press the BOOST Button to increase cutting power for the next 10 seconds. The Display Screen will show a 10-second countdown.
3. After 10 seconds, the device will return to normal cutting mode, and the display will revert to showing the battery percentage and icon.
4. During normal operation, press and hold the BOOST Button to activate BOOST Mode.
5. If the device enters a stall state in normal mode while the ON/OFF Switch is still pressed, simultaneously press and hold the BOOST Button to activate BOOST Mode.

Note:

BOOST Mode cannot be activated in low-battery protection state (battery level \leq 5%).

Sharpening Mode

1. Sharpening Mode is used to sharpen the Blade to maintain its cutting efficiency. Activate this mode by turning the Sharpen Switch in the direction of the arrow.
2. In normal mode, turn and hold the Sharpen Switch to enter Sharpening Mode. The Display Screen will show the sharpening mode with a 10-second countdown.
3. Operate the device to allow the sharpening stone to grind the Blade until the countdown ends. Release the Sharpen Switch to complete the sharpening process.

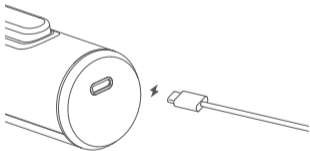


Notes:

1. Sharpening Mode lasts for 10 seconds by default. If the user does not release the knob after the countdown, the display will show "00" with the "SHARPEN" indicator flashing.
2. BOOST Mode and Sharpening Mode are mutually exclusive. If the Sharpen Switch is turned during BOOST Mode, the device will exit BOOST Mode and switch to normal speed for sharpening.
3. Turning the Sharpen Switch while the device is powered off will not activate Sharpening Mode.

Charging the Tool

1. This device is equipped with a universal USB-C Charging Port and includes a USB-C charging cable. A charger is not included. Please use a charger with DC output, 5V voltage, and 500mA-2000mA current to charge the battery.
2. Charging time is approximately 2.5 hours, depending on the charger. For safety, do not operate the device while charging.
3. Charge the battery promptly when the power level is too low.
4. Avoid overcharging or deep discharging the battery, as this may damage its capacity.



Battery Level Display

1. While Charging

When connected to a power source, the battery percentage remains lit, and the battery icon flashes .

2. Fully Charged

Displays 100%, and the battery icon remains lit .

3. Low Battery

In low-battery protection state (battery level $\leq 5\%$ and $>0\%$), the display shows 0%, and the battery icon blinks rapidly three times before the screen turns off .



Flashes : $5\% < \text{Battery level} < 100\%$



Remains lit : Battery level = 100%



Blinks three times and turns off :
 $0\% < \text{Battery level} \leq 5\%$

Notes:

1. When the battery is fully depleted, the device will shut down via the protection circuit: the blade will stop moving.
2. The battery may overheat and become temporarily unchargeable in warm environments or after frequent use. Allow the battery to cool before charging.
3. The electric scissors will not operate while charging.

Blade Replacement Instructions

1. Rotate the Blade-change Switch in the direction shown by the arrow (Fig. 1) until it is completely unscrewed and removed.
2. Replace the Blade by following the arrow direction indicated in (Fig. 2).
3. Reverse the rotation of the Blade-change Switch (opposite direction as Fig. 1) until it is fully tightened and secured.



Note:

1. Do not power on or use the device until the blade is completely and properly installed.
2. Failure to comply may result in damage to the machine or loss of components or risk of serious personal injury.

Screen Display

Normal Display

1. When pressing the Lock Off Button and ON/OFF Switch, the Display Screen will show the battery percentage and icon. The screen will turn off after prolonged inactivity.

Error Display

When a malfunction occurs, the Smart Digital Display will show an error message.

Error Code	Symptom	Cause	Solution
E1	Screen displays "E1"	Error caused by long-pressing the Lock Off	Release the Lock Off
E2	Device stops working, screen displays "E2" (Overheat Protection). If the display persists while holding the ON/OFF Switch, it will turn off after releasing the switch.	Operating environment temperature exceeds 70°C	Move the electric scissors to an environment between -10° C and 70°C
E3	Device stops working, screen displays "E3" (Low-Temperature Protection). If the display persists while holding the ON/OFF Switch, it will turn off after releasing the switch.	Operating environment temperature is below -10°C	Move the electric scissors to an environment between -10 ° C and 70°C
Low Battery Protection	Cannot enter Normal Mode or BOOST Mode. Screen shows 0%, and the battery icon blinks rapidly three times before turning off.	Battery level $\leq 5\%$	Charge the electric scissors immediately

04 Maintenance & Storage

Daily Cleaning & Care

Keep all components, vents, and motor housing free from dirt and dust.

Wipe the machine with a clean cloth or use compressed air to remove debris.

Clean the machine immediately after each use. Regularly wipe with a damp cloth and mild soap.

Do not use detergents or corrosive solvents, as they may damage plastic parts.

Prevent water from entering the machine interior to avoid electric shock hazards.

Product Storage

Store the machine and accessories in a cool, dry place at -20°C to 60°C (ideal range: 5°C - 30°C). Use the original packaging for storage.

Before storage, charge the battery to 50%-75%. Recharge every 3-6 months to maintain battery health.

05 Safety Precautions

Ensure the power is disconnected before servicing electrical components.

This product is not a toy. Do not allow children to operate. For users aged 16+ only.

Use only compatible blades designed for this electric scissors. Avoid excessive force to prevent material or blade damage.

Thin materials (e.g., fabric) may get pulled into the tool during cutting. For optimal results:

Do not apply excessive pressure.

Hold the fabric taut and cut slowly.

WARNING!

Never let the support stand get stuck during cutting. The foot must remain parallel to the cutting line.

06 Specification

Product Name:

HOTO EdgeFlow Cordless Electric Scissors

Product Model: QWJDA001

Item Dimensions:

Approx. 215.4*106.8*60.9 mm / 8.50*4.21*2.40 inch

Net Weight: Approx. 430 g / 0.95 lb

Nominal Voltage: 3.6 V 

Input Parameter: 5 V  1 A

Nominal Capacity: 2000 mAh

Charging Time: Approx. 150 min

Continuous Usage Time: Approx. 40 min

No-Load Speed: 285 RPM

Maximum Torque: 2 N·m / 17.7 lb·in

Information:

The declared vibration total value(s) and the declared noise emission value(s) have been measured in accordance with a standard test method and may be used for comparing one tool with another; The declared vibration total value(s) and the declared noise emission value(s) may also be used in a preliminary assessment of exposure.

The vibration and noise emissions during actual use of the power tool can differ from the declared values depending on the ways in which the tool is used especially what kind of workpiece is processed; and It is necessary to identify safety measures to protect the operator that are based on an estimation of exposure in the actual conditions of use (taking account of all parts of the operating cycle such as the times when the tool is switched off and when it is running idle in addition to the trigger time).

Declaration of the noise emission values according to EN 62841(considered uncertainty 5 dB(A))

Sound pressure level: 67 dB (A)

Sound power level: 73 dB (A)

Declaration of the vibration emission according to EN 62841 (considered uncertainty 1.5 m/s²): 16.5 m/s²



All products bearing this symbol are waste electrical and electronic equipment (WEEE as in directive 2012/19/EU) which should not be mixed with unsorted household waste. Instead, you should protect human health and the environment by handing over your waste equipment to a designated collection point for the recycling of waste electrical and electronic equipment, appointed by the government or local authorities. Correct disposal and recycling will help prevent potential negative consequences to the environment and human health. Please contact the installer or local authorities for more information about the location as well as terms and conditions of such collection points.

Troubleshooting

Fault	Cause	Solution
Unable to turn on	Out of battery	Please charge the equipment in time.
Device stops rotating during use	Device is operating under heavy load continuously, triggering overheat protection or low voltage protection	Let the device cool down

Unable to install accessories	Accessory size does not match the tool head	Use the accessories provided in the box, or accessories of the correct size
Unable to charge	Charging cable is not properly connected	Reconnect the charging cable

Notes for packaging



The packaging materials are recyclable. Please dispose of packaging in an environmentally friendly manner.

CE We Shanghai HOTO Technology Co., Ltd., hereby, declares that this equipment is in compliance with the applicable Directives and European Norms, and amendments.

Manufacturer: Shanghai HOTO Technology Co., Ltd.

Address: Building 45, No. 50, Moganshan Road, Shanghai, China



HOTO EUROPE AB
 Pumpgatan 1, 417 55 GÖTEBORG,
 Sweden
service@hototools.com

Federal Communications Commission Supplier's Declaration of Conformity

This supplier's declaration of conformity is hereby for
We declare that the above mentioned device has been
tested and found in compliance with CFR 47 Part 15
Regulation.

Product: HOTO EdgeFlow Cordless Electric Scissors

Product model: QWJDA001

Brand/Trade: HOTO

This device complies with part 15 of the FCC Rules.

Operation is subject to the following two conditions: (1)

This device may not cause harmful interference, and (2)

this device must accept any interference received,
including interference that may cause undesired operation.

Note: This equipment has been tested and found to comply
with the limits for a Class B digital device, pursuant to part 15
of the FCC Rules. These limits are designed to provide
reasonable protection against harmful interference in a
residential installation. This equipment generates, uses and
can radiate radio frequency energy and, if not installed and
used in accordance with the instructions, may cause harmful
interference to radio communications. However, there is no
guarantee that interference will not occur in a particular
installation. If this equipment does cause harmful
interference to radio or television reception, which can be
determined by turning the equipment off and on, the user is
encouraged to try to correct the interference by one or
more of the following measures:

- Reorient or relocate the receiving antenna.
- Increase the separation between the equipment and receiver.
- Connect the equipment into an outlet on a circuit different from that to which the receiver is connected.
- Consult the dealer or an experienced radio/TV technician for help.

Representative of Responsible Party for SDoC

Company: HOTO (US) TECHNOLOGY CO LTD

Address: 919 North Market Street, Suite 950,
Wilmington DE 19801

Country: U.S.A.

Customer Service(US): +1 855-577-2659

service@hototools.com

Mon-Fri 9:00am-5:00pm(CST)

DECLARATION OF CONFORMITY



EU Declaration of Conformity

We

Shanghai HOTO Technology Co., Ltd.

Declare that the product:

HOTO EdgeFlow Cordless Electric Scissors

QWJDA001

Complies with the essential health and safety requirements of
the following directives:

2014/30/EU Electromagnetic Compatibility directive References
to the following harmonized standard were made:

EN IEC 55014-1:2021

EN IEC 55014-2:2021

EN IEC 61000-3-2:2019+A1:2021+A2:2024

EN 61000-3-3:2013/A2:2021/AC:2022-01

2011/65/EU+ (EU) 2015/863 Restrictions of the Use of Certain
Hazardous Substances in Electrical and Electronic Equipment

Authorised signatory and technical file holder:

Shanghai HOTO Technology Co., Ltd.

Building 45, No.50 Moganshan Road, Shanghai, China