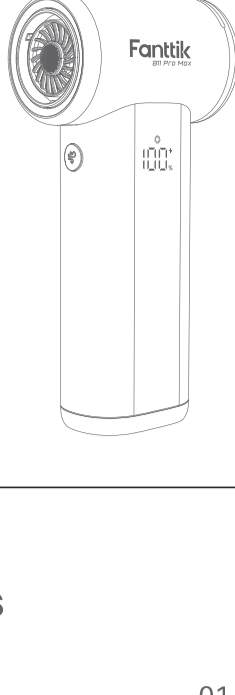


## B11 Pro Max

Electric Air Duster

# User Manual

Please read this instruction manual carefully before use and keep it for future reference.



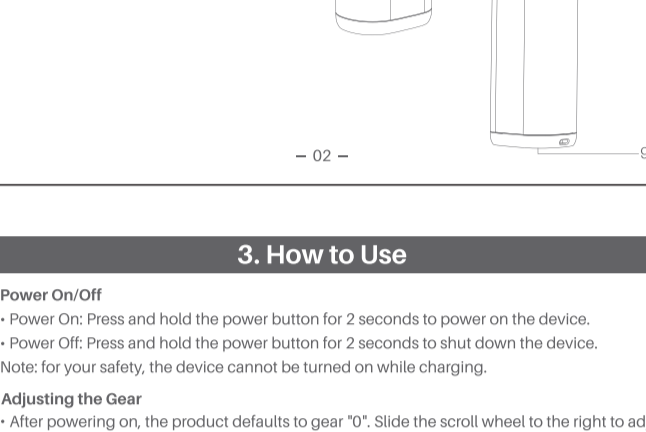
## Contents

1.Package Contents.....	01
2.Product Overview .....	02
3.How to Use .....	03
4.Nozzle Replacement Procedure.....	05
5.Specifications.....	06
6.Troubleshooting .....	07
7.Safety Warnings .....	09
8.Warranty .....	11

## 1. Package Contents



## 2. Product Overview



## 3. How to Use

- Power On/Off**
- Power On: Press and hold the power button for 2 seconds to power on the device.
  - Power Off: Press and hold the power button for 2 seconds to shut down the device.
- Note: for your safety, the device cannot be turned on while charging.
- Adjusting the Gear**
- After powering on, the product defaults to gear "0". Slide the scroll wheel to the right to adjust the gear up to "100".
  - The product features intelligent speed sensing; the gear adjustment speed adapts to the scroll wheel speed.
- Turn the Light On/Off**
- When the switch is turned on, the lights turn on simultaneously.
  - A short press of the switch adjusts the light brightness, cycling through three brightness levels: 1, 2, and 3.
  - When the switch is turned off, the lights turn off simultaneously.
- LED Display**
- 1.Power on
- The LED light turns on simultaneously when the switch button turns on.
  - The LED light turns off simultaneously when the switch button turns off.

After powering on, the screen displays "0.....100" gear, which changes to the battery level indicator after 5 seconds. When the gear adjustment button is pressed, the screen shows the current gear level (0.....100). When the boost mode button is held down, the screen displays "HP", and reverts to showing the current gear level after the boost mode button is released.

**2.Charging**  
When charging, the charging icon blinks and displays the battery level ranging from 0% to 100%.

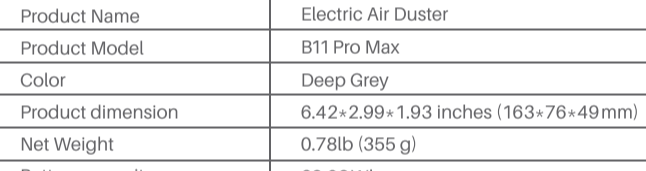
**3.Power Indicator**  
• After powering on, the LED display activates and shows the remaining battery percentage (0%-100%).  
• When battery drops below 20%, the power indicator flashes rapidly.  
• While charging, the indicator slowly blinks green.  
• At full charge, the indicator remains solid green.

**Circular LED Light**  
When the battery level drops below 10%, the light turns red to indicate the remaining battery level.

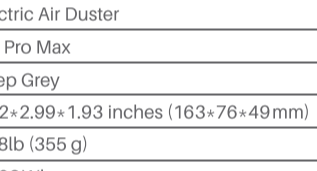
**Battery charging**

- This device features a Type-C charging port and includes a Type-C cable.
- Note: The power adapter is not included—please use a standard 5V Type-C charger.

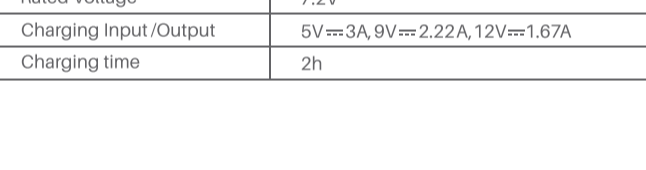
## 4. Nozzle Replacement Procedure



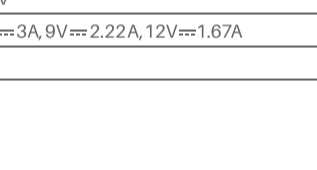
A: Turn the nozzle counterclockwise.



B: Turn the nozzle counterclockwise.



C: Align the new nozzle with the machine groove.



D: Turn the nozzle clockwise until it clicks into place.

## 5. Specifications

Product Name	Electric Air Duster
Product Model	B11 Pro Max
Color	Deep Grey
Product dimension	6.42*2.99*1.93 inches (163*76*49mm)
Net Weight	0.78lb (355 g)
Battery capacity	28.08Wh
Rated Voltage	7.2V
Charging Input/Output	5V==3A, 9V==2.22A, 12V==1.67A
Charging time	2h

## 6. Troubleshooting

Troubles	Possible Causes	Solutions
"E5" Code	Excessive motor current	1. Check for any foreign objects sucked into the motor; 2. Check if water has accidentally entered the product; 3. If neither of these is the case, please contact our customer service.
"E8" Code	The temperature has exceeded the NTC's set limit.	1. Check for foreign objects blocking the air outlet or inlet. 2. Please allow it to cool for 5 minutes before turning it on.
Low speed	Check for air blockage	1. Check the air inlet and outlet for any obstructions. 2. When using the mouthpiece, check if it is clogged. 3. If none of these are the case, please contact our customer service, thanks!

Troubles	Possible Causes	Solutions
Startup lag	Motor protection oil is viscous	After powering on, switch to speed 2 and let it run for a while until it works normally. Otherwise, please contact our customer service, thanks!
LED not lit	loose wiring	Check if it has been bumped or operated in a humid environment. If not, please contact our customer service, thanks!
Excessive Noise	Check for foreign objects in the air intake.	Check the air intake for foreign objects that may be causing increased motor noise. If not, contact our customer service, thanks!

## 7. Safety Warnings

- Avoid moisture, dust, and drop.
- Do not store the product in extreme temperature environment.
- Stay alert, watch what you are doing and use common sense when operating. Do not operate while you are tired or under the influence of drugs, alcohol, or medication.
- This product is not a toy and should not be used by kids under 7 years old.
- This product has built-in battery, do not throw it into fire and should be recycled by local laws and regulations.
- Do not dismantle the machine by yourself. Have your power tool serviced by a qualified repair person or contact us for advice.
- Do not use with wet hands.
- Do not place this product in a splashing or soaking environment.
- Do not insert foreign objects into the air outlet and air inlet.
- Do not place this product near a heat source (stove or heater, etc.) or in a car on a hot day.
- Do not use it near LPG or other flammables (such as volatile agents, paint thinners, sprays, etc.), otherwise it may cause an explosion or fire.
- Do not block the air inlet and air outlet when the product is working.
- If the product has abnormal noise, odor, high temperature, or abnormal fan blade rotation, please stop using it immediately.

- Do not disassemble the entire product. If it is accidentally disassembled and causes abnormal operation, please contact after-sales service to send it back.
- Do not blow the air flow to the eyes, ears, mouth and other human organs during use.
- Do not store this product where children and pets can reach it.
- Do not use this product in an environment where the temperature is too high or too low.
- Regularly remove the attachments from the air outlet and air inlet.
- Do not press or rub the air outlet and air inlet with your fingernails or sharp objects.
- Do not overcharge or over-discharge the battery, otherwise it will damage the battery.
- Do not press or rub the air inlet and air outlet with your fingernails or sharp objects to avoid damaging the product.
- Do not use alcohol, nail polish remover or detergent to clean this product, otherwise it may cause malfunction, cracking or fading.
- Do not use this product near a bathtub, shower, washbasin or other utensils filled with water.

## 8.Warranty

**Your Warranty Includes 12-Month Coverage**  
Within 12 months of purchase, we will provide timely and effective online after-sales service.

