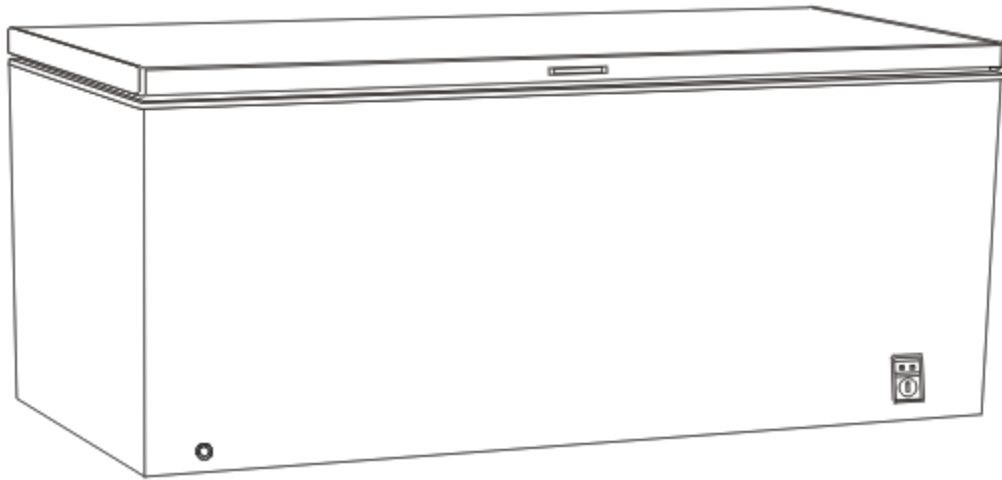


# SUMMIT

## Chest Freezer

Models SCFM232



### *Owner's Manual*

Write the Serial Number here:

\_\_\_\_\_

Felix Storch, Inc.  
Summit Appliance Division  
ISO 9001:2015 registered  
770 Garrison Avenue  
Bronx, NY 10474  
[www.summitappliance.com](http://www.summitappliance.com)

## TABLE OF CONTENTS

<b>Important Safeguards .....</b>	<b>2 - 4</b>
<b>Names of Parts.....</b>	<b>4</b>
<b>Transportation Instructions .....</b>	<b>4 - 5</b>
<b>Installation Instructions.....</b>	<b>5</b>
<b>Start-Up .....</b>	<b>5</b>
<b>Freezer Operation .....</b>	<b>5- 6</b>
<i>Temperature Adjustment.....</i>	<i>5 - 6</i>
<i>Indicator Lights.....</i>	<i>6</i>
<i>Storing Frozen Food.....</i>	<i>6</i>
<i>Freezing Fresh Food.....</i>	<i>6</i>
<i>Defrosting.....</i>	<i>6</i>
<b>Cleaning and Care .....</b>	<b>7</b>
<b>Limited Warranty .....</b>	<b>10</b>

# IMPORTANT SAFEGUARDS

This freezer contains an environmentally friendly but flammable refrigerant, R600a. There is the danger of explosion if for any reason the refrigerant is allowed to escape from the system. The refrigeration system must never be accessed by unauthorized personal. When transporting and installing the unit, ensure that no part of the tubing system is damaged. If the tubing is damaged and a leak occurs, avoid any ignition sources and naked flames near the unit, and ventilate the room immediately. In order to avoid formation of flammable gas/air mixtures in case of a leak from the refrigeration system, for every ounce of coolant at least 325 cubic feet of room space is required. The amount of coolant in the appliance is stated on the data plate attached to the appliance.

## DANGER!

- This appliance is not intended for use by persons (including children) with reduced physical, sensory or mental capabilities, or lack of experience and knowledge, unless they have been given supervision or instruction concerning use of the appliance by a person responsible for their safety.
- Children should be supervised to ensure that they do not play with the appliance.
- Do not store explosive substances such as aerosol cans with a flammable propellant in this appliance.
- This appliance is intended to be used in household and similar applications such as staff kitchen areas in shops, offices and other working environment farm houses and by clients in hotels, motels and other residential type environments; bed and breakfast type environments; catering and similar not-retail applications.
- If the supply cord is damaged, it must be replaced by the manufacturer, its service agent or similarly qualified persons in order to avoid a hazard.

## WARNING!

- The ventilation openings must never be covered or blocked. Never use a water stream or pressure cleaning device during cleaning or defrosting in order to avoid short circuits in the electrical system.
- Do not place any electrical devices in the freezer.
- Products containing flammable gases and explosives must not be stored in the freezer.
- Avoid damaging the refrigerant tubing which would increase the risk of a leak.

## ***DANGER! Risk of child entrapment!***

Child entrapment and suffocation are not problems of the past. Junked or abandoned appliances are still dangerous, even if they will “just sit in the garage a few days”.

*Before discarding your old refrigerator:*

- *Take off the doors*
- *Leave the shelves in place so that children may not easily climb inside.*

**- SAVE THESE INSTRUCTIONS -**

## SAFETY WARNING!



It is hazardous for anyone other than authorized service personnel to carry out servicing or repairs which involves the removal of covers. To avoid the risk of an electric shock do not attempt to repair this appliance yourself.

## WARNING!

Risk of fire / flammable materials.



## Safety tips

Do not use electrical appliances such as a hair dryer or heater to defrost your Freezer.

Containers with flammable gases or liquids can leak at low temperatures.

Do not store any containers with flammable materials, such as spray cans, fire extinguisher refill cartridges etc. in the Freezer.

Do not place carbonated or fizzy drinks in the Freezer compartment. Ice pops can cause “Frost/Freeze burns” if consumed straight from the Freezer.

Do not remove items from the Freezer compartment if your hands are damp/wet, as this could cause skin abrasions or “Frost/Freezer burns”. Bottles and cans must not be placed in the Freezer compartment as they can burst when the contents freeze.

Manufacturer’s recommended storage times should be adhered to. Refer to relevant instructions.

Do not allow children to tamper with the controls or play with the Freezer. The Freezer is heavy. Care should be taken when moving it. It is dangerous to alter the specifications or attempt to modify this product in any way.

Do not store inflammable gases or liquids inside your Freezer.

If the power cable is damaged, it must be replaced by the manufacturer, its service agent or similarly qualified persons in order to avoid a hazard.

This appliance can be used by children aged from 8 years and above and persons with reduced physical, sensory or mental capabilities or lack of experience and knowledge if they have been given supervision or instruction concerning use of the appliance in a safe way and understand the hazards involved. Children shall not play with the appliance. Cleaning and user maintenance shall not be performed by children without supervision.

This appliance is intended to be used in household and similar applications such as

- staff kitchen areas in shops, offices and other working environments;
- farm houses and by clients in hotels, motels and other residential type environments;
- bed and breakfast type environments;
- catering and similar non-retail applications.

Keep ventilation openings in the appliance enclosure or in the built-in structure clear of obstruction.

Do not use mechanical devices or other means to accelerate the defrosting process, other than those recommended by the manufacturer.

Do not damage the refrigerant circuit.

Do not use electrical appliances inside the food storage compartments of the appliance, unless they are of a type recommended by the manufacturer.

Do not store explosive substances such as aerosol cans with a flammable propellant in this appliance.

This appliance is not intended for use by persons (including children) with reduced physical, sensory or mental capabilities, or lack of experience and knowledge, unless they have been given supervision or instruction concerning use of the appliance by a person responsible for their safety. Children should be supervised to ensure that they do not play with the appliance.

Do not use extension cords or ungrounded (two prong) adapters.

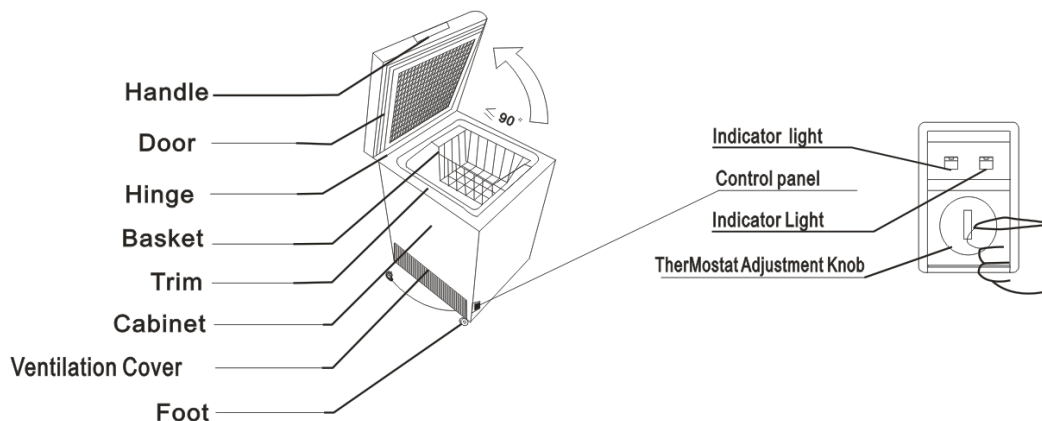
- WARNING: Keep all ventilation openings in the appliance enclosure or in the structure for building-in clear of obstruction.
- WARNING: Do not use mechanical devices or other means to accelerate the defrosting process, other than those recommended by the manufacturer.
- WARNING: Do not damage the refrigerant circuit.
- WARNING: Do not use electrical appliances inside the food storage compartments of the appliance, unless they are of the type recommended by the manufacturer.
- WARNING: Refrigerating appliances – in particular a refrigerator-freezer Type I – might not operate consistently (There is possibility of defrosting of contents or temperature becoming too warm in the frozen food compartment) when used for an extended period of time below the cold limit of the temperature range for which the refrigerating appliance is designed;
- WARNING: It is necessary that, for doors or lids fitted with locks and keys, the keys be kept out of the reach of children and not in the vicinity of the refrigerating appliance, in order to prevent children from being locked inside.
- WARNING: The refrigerant used in your appliance and insulation materials needs special disposal procedures.
- WARNING: When positioning the appliance, ensure the supply cord is not trapped or damaged.
- WARNING: Do not locate multiple portable socket-outlets or portable power supplies at the rear of the appliance.
- WARNING: In order to reduce flammability hazards, the installation of this appliance must only be carried out by a suitably qualified person.

DANGER: Risk of child entrapment. Before you throw away your old refrigerator or freezer,

\* Take off the doors.

\* Leave the shelves in place so that children may not easily climb inside.

## NAMES OF THE PARTS



**⚠WARNING⚠**: Never touch the interior of the Freezer Chamber or frozen foods in the compartment with wet hands as this could result in frost bite.

KEEP THE KEY OUT OF REACH OF CHILDREN AND NOT IN THE VICINITY OF THE FREEZER.

## TRANSPORTATION INSTRUCTIONS

The appliance should be transported only in a vertical upright position. The packing as supplied must be intact during transportation.

If the product is transported horizontally during the transport, it must only be laid on its left-hand side (when facing the door front) and must not be operated for at least 4 hours after the appliance is brought back to upright position to allow the system to settle.

1. Failure to comply with the above instructions could result in damage occurring to the appliance. The manufacturer will not be held responsible if these instructions are disregarded.

2. The appliance must be protected against rain, moisture and other atmospheric influences.

**IMPORTANT**: Care must be taken while cleaning / carrying the appliance to avoid touching the condenser metal wires at the back of the appliance, as you might injure your fingers and hands or damage your product.

**IMPORTANT**: This appliance is not designed for stacking with any other appliance. Do not attempt to sit or stand on top of your appliance as it is not designed for such use. You could injure yourself or damage the appliance.

**IMPORTANT:** Make sure the power cable is not caught under the appliance during and after carrying / moving the appliance, to avoid the cable being cut or damaged.

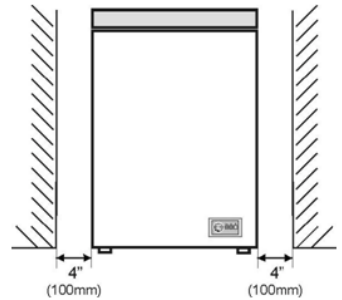
When positioning your appliance, take care not to damage your flooring, pipes, wall coverings etc. Do not move the appliance by pulling by the lid or handle. Do not allow children to play with the appliance or tamper with the controls. Our company declines to accept any liability should the instructions not be followed.

**INSTALLATION INSTRUCTIONS**

1. If possible, avoid placing the appliance near cookers, radiators or in direct sunlight as this will cause the compressor to run for long periods. If installed next to a source of heat or refrigerator, maintain the following minimum side clearances:

From Cookers	4" (100 mm)
From Radiators	12" (300 mm)
From Fridges	4" (100 mm)

2. Make sure that sufficient room is provided around the appliance to ensure free air circulation. Ideally, a space of no less than 10cm must be left around the freezer, and ensure the gaps as shown in the below diagram.



3. The appliance should be located on a smooth surface.
4. It is forbidden to use the freezer outdoors.
5. Protection from moisture. Do not locate the freezer in moist space to avoid the metal parts getting rusted. Do not spray water on the freezer, otherwise insulation will be weakened and current leakage may occur.
6. Refer to "Cleaning and Care" section to prepare your appliance for use.
7. If the freezer is installed in unheated areas, garages etc., in cold weather, condensation may form on the outer surfaces. This is quite normal, rather than a fault. Remove the condensation by wiping with a dry cloth.

**START-UP**

**Final Check**

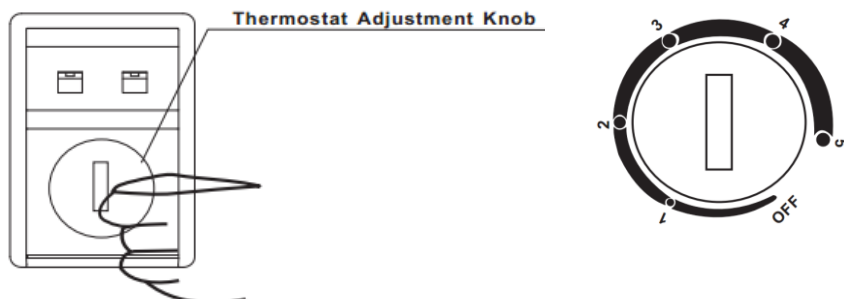
Before you start to use the freezer, please check that:

1. The interior is dry and air can circulate freely at the rear.
2. Clean the interior as recommended under "CLEANING AND CARE".
3. Insert the plug into the wall socket and switch on the electricity supply; the Red light goes on. Avoid accidental disconnection by taping over the switch. When the Green light glows, the compressor starts running.
4. You will hear a noise as the compressor starts up. The liquid and gases sealed within the refrigeration system may also give rise to noise, whether the compressor is running or not, which is quite normal.
5. If you are about to store frozen food, open the freezer lid and check whether the freezer has reached the correct temperature. Then you can put in the frozen food.
6. Do not load the appliance immediately after it is switched on. Wait until the correct storage temperature is reached. It is recommended to check the temperature with an accurate thermometer.

**Important Notes:**

- The climate class is 5/7, and the room temperature is between 35°C and 40°C.
- In case of a power failure, do not open the lid. Frozen food will not be affected if the failure lasts for less than 20 hours. If the failure time is longer, the food should be checked and eaten immediately, or cooked and then refrozen.
- If the lid of the chest freezer is difficult to open just after being closed, don't worry. This is due to the pressure difference, which will equalize after a few minutes, allowing the lid to be opened normally.

**FREEZER OPERATION**



**Temperature adjustment**

The temperature of the freezer is adjusted by means of the knob assembled with the thermostat. "1, 2, 3, 4 or 5" does not represent a specific temperature. The smaller the number, the higher the temperature. So, position "5" is the lowest temperature.

Figures mean:

"OFF": Forced Shutdown Point



### 1—5: Frozen Interval (from -12 °C to -30 °C)

The realized temperatures vary with the conditions of use of the appliance, such as installation place of the appliance, ambient temperature, and frequency of lid opening, extent of filling the freezer with food. The position of the thermostat knob should be adjusted according to these factors. Normally, for an ambient temperature of approx. 25°C, the thermostat knob should be adjusted to the mid position.

We recommend you to check the temperature with a thermometer to ensure the Freezer is kept at the desired temperature. Remember to take your reading very quickly, since the thermometer temperature will rise very rapidly after it is removed from the freezer.

Please remember each time the lid is opened the internal temperature will rise with the escaping cold air. Therefore, never leave the lid open and ensure it is closed immediately after food is put in or taken out.


#### Indicator lights

The indicator lights are placed on the front side of the freezer for easy visibility.

Functions of the indicator lights are as follows:

- Red Light – indicates that the appliance is supplied with electric energy.
- Green Light – indicates that the compressor is working.

#### STORING FROZEN FOOD

Prepackaged commercially frozen food should be stored in accordance with the frozen food manufacturer's instructions for a  freezer compartment.

To ensure high quality is achieved by the frozen food manufacturer and the food retailer, the following should be remembered:

1. Put packets in the freezer as quickly as possible after purchase.
2. Do not exceed "Use By", "Best Before" dates on the packaging.

#### FREEZING FRESH FOOD

Place fresh food to be frozen near the side walls to ensure fast freezing and away from the frozen food, if possible.

Never exceed this maximum capacity. Do not freeze too large a quantity at any one time.

The quality of the food is best preserved when it is frozen right through to the center as quickly as possible.

Take special care not to mix frozen food and fresh food.

#### DEFROSTING

Defrost twice a year or when a frost layer of around 7 mm (1/4") has been formed.

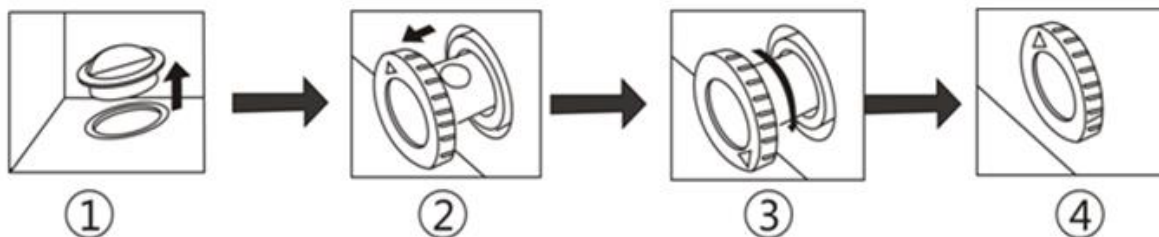
Alternatively, you may switch off the freezer at the socket outlet and pull out the power plug.

Extract the water conduit and put in a water container.

6 hours before the defrosting, please set the thermostat knob at "5" position to make sure the food is at the lowest temperature when taken out. All food should be wrapped in several layers of newspaper and stored in a cool place (e.g. fridge or larder).

Remove the freezer basket, and leave the lid open. Containers of warm water may be placed carefully in the freezer to speed up the defrosting.

Never use hairdryers, electrical heaters or other such electrical appliances for defrosting. When defrosting is finished, flow out the defrost water which is collected at the bottom of the freezer as in the below diagram and dry the interior thoroughly. Switch on the Fast Freeze and leave it on for about three hours.



1. A drain outlet is designed at the bottom of the freezer liner, and when defrosting, remove its rubber cover (you can find the rubber cover in the freezer accessory bag and install it yourself), the defrost water flows out and is discharged from the drain pipe. (NOTE: PLEASE KEEP THE RUBBER COVER IN A SAFE PLACE DURING THE DEFROSTING AND PUT IT BACK AFTER DEFROSTING IS DONE )
2. Extract the water conduit by 20-25mm until the water hole can be seen.
3. Twist the water conduit until the arrow points downward.
4. After defrosting is done, make sure there is no more water coming out before putting the water conduit in place and make the arrow point upward.

#### Important Notes:

- Do not use pointed or sharp-edged objects such as knives or forks to remove the frost.
- Never use hairdryers, electrical heaters or other such electrical appliances for defrosting.
- It is normal that water beads or frosts appear on the freezer collar and door gaskets in wet weather, which will not affect normal use. In such cases, please clean it with a dry cloth in a timely manner.

## **CLEANING AND CARE**

- \*\* It is recommended to switch off the freezer at the socket outlet and pull out the power plug before cleaning.
- \*\* Never use any sharp abrasive instrument, soap, household cleaner, detergent and wax polish for cleaning.
- \*\* Use lukewarm water to clean the cabinet of the freezer and wipe it dry.
- \*\* Use a damp cloth soaked with a solution of one teaspoon of bicarbonate of soda to one pint of water to clean the interior and wipe it dry.
- \*\* Excess deposits of ice should be removed on a regular basis using a plastic ice scraper available from your local store. Large accumulations of ice will impair the performance of the freezer.
- \*\* If the freezer is not to be used for a long period of time, switch it off, remove all food, clean it and leave the lid ajar.
- \*\* Check lid seals regularly to ensure they are clean and free from food particles.

### **Important Notes:**

Never use water to wash the compressor position; wipe it with a dry cloth thoroughly after cleaning to prevent rust.

## **DO'S AND DON'TS**

**Do** – Defrost food from the freezer thoroughly in a fridge or in a microwave oven by following the defrosting and cooking instructions.

**Do** – Ensure that chest freezer lid is completely closed after each use.

**Do** – Defrost frozen meat completely before cooking.

**Do** – Close the lid gently.

**Do** – Check contents of the freezer at regular intervals.

**Do** – Clean and defrost your freezer regularly (See “Defrosting”)

**Do** – Keep food for as short a time as possible and adhere to “Best Before”, “Use By” dates.

**Do** – Store commercially frozen food in accordance with the instructions given on the packets that you buy.

**Do** – Always choose high quality fresh food and be sure it is thoroughly clean before you freeze it.

**Do** – Prepare fresh food for freezing in small portions to ensure rapid freezing.

**Do** – Wrap all foods in aluminum foil or freezer quality plastic bags and make sure any air is excluded.

**Do** – Wrap frozen food when you buy it and put it in to the freezer as soon as possible.

**Do** – Store small items in the basket provided.

**Do** – Remove ice cream from the freezer 10-20 minutes before serving.

**Don't** – Leave the lid open for long periods as this will make the freezer more costly to run and cause excessive ice formation.

**Don't** – Use pointed sharp edged objects such as knives, forks to remove the ice.

**Don't** – Put hot food in the freezer. Let it cool down first.

**Don't** – Put liquid-filled bottles or sealed cans containing carbonated liquids into the freezer as they may burst.

**Don't** – Store poisonous or dangerous substances in the freezer. Your freezer has been designed for the storage of edible foodstuffs only.

**Don't** – Consume ice-cream and water ices direct from the freezer. The low temperature may cause ‘freezer burns’ on lips.

**Don't** – Freeze fizzy drinks.

**Don't** – Try to keep frozen food which has thawed, it should be eaten within 24 hours or cooked and refrozen.

**Don't** – Remove items from the freezer with wet hands.

**Don't** – Shut the lid with force. You will damage the appliance.

• This appliance is not intended for use by persons (including children) with reduced physical, sensory or mental capabilities, or lack of experience and knowledge, unless they have been given supervision or instruction concerning use of the appliance by a person responsible for their safety.

• Children should be supervised to ensure that they do not play with the appliance.

• Do not store explosive substances such as aerosol cans with a flammable propellant in this appliance.

• If the supply cord is damaged, it must be replaced by the manufacturer, its service agent or similarly qualified persons in order to avoid a hazard.

## **ELECTRICAL INFORMATION**

### **THIS APPLIANCE MUST BE GROUNDED.**

This appliance is fitted with a fused three pin plug to BS 1363 which will be suitable for use in all houses fitted with sockets to current specifications.

If the fitted plug is not suitable for your socket outlets, it should be cut off and carefully disposed of. To avoid a possible shock hazard, do not insert the discarded plug into a socket.

:

# NOTES



# NOTES



# LIMITED WARRANTY

## ONE-YEAR LIMITED WARRANTY

Within the 48 contiguous United States, for one year from the date of purchase, when this appliance is operated and maintained according to instructions attached to or furnished with the product, warrantor will pay for factory-specified parts and repair labor to correct defects in materials or workmanship. Service must be provided by a designated service company. Outside the 48 states, all parts are warranted for one year from manufacturing defects. Plastic parts, shelves and cabinets are warranted to be manufactured to commercially acceptable standards, and are not covered from damage during handling or breakage.

## 5-YEAR COMPRESSOR WARRANTY

1. The compressor is covered for 5 years.
2. Replacement does not include labor.

### *ITEMS WARRANTOR WILL NOT PAY FOR:*

1. Service calls to correct the installation of your appliance, to instruct you how to use your appliance, to replace or repair fuses or to correct wiring or plumbing.
2. Service calls to repair or replace appliance light bulbs or broken shelves. Consumable parts (such as filters) are excluded from warranty coverage.
3. Damage resulting from accident, alteration, misuse, abuse, fire, flood, acts of God, improper installation, installation not in accordance with electrical or plumbing codes, or use of products not approved by warrantor.
4. Replacement parts or repair labor costs for units operated outside the United States.
5. Repairs to parts or systems resulting from unauthorized modifications made to the appliance.
6. The removal and reinstallation of your appliance if it is installed in an inaccessible location or is not installed in accordance with published installation instructions.

## DISCLAIMER OF IMPLIED WARRANTIES; LIMITATION OF REMEDIES

CUSTOMER'S SOLE AND EXCLUSIVE REMEDY UNDER THIS LIMITED WARRANTY SHALL BE PRODUCT REPAIR AS PROVIDED HEREIN. IMPLIED WARRANTIES, INCLUDING WARRANTIES OF MERCHANTABILITY OR FITNESS FOR A PARTICULAR PURPOSE, ARE LIMITED TO ONE YEAR. WARRANTOR SHALL NOT BE LIABLE FOR INCIDENTAL OR CONSEQUENTIAL DAMAGES. SOME STATES DO NOT ALLOW THE EXCLUSION OR LIMITATION OF INCIDENTAL OR CONSEQUENTIAL DAMAGES, OR LIMITATIONS ON THE DURATION OF IMPLIED WARRANTIES OF MERCHANTABILITY OR FITNESS, SO THESE EXCLUSIONS OR LIMITATIONS MAY NOT APPLY TO YOU. THIS WARRANTY GIVES YOU SPECIFIC LEGAL RIGHTS AND YOU MAY ALSO HAVE OTHER RIGHTS, WHICH VARY FROM STATE TO STATE.



**WARNING: This product can expose you to chemicals including Nickel (Metallic) which is known to the State of California to cause cancer, birth defects or other reproductive harm.**

For more information go to [www.P65Warnings.ca.gov](http://www.P65Warnings.ca.gov)

Note: Nickel is a component in all stainless steel and some other metallic compositions.

**FELIX STORCH, INC.**  
770 Garrison Avenue  
Bronx, NY 10474  
Phone: (718) 893-3900  
Fax: (844) 478-8799  
[www.summitappliance.com](http://www.summitappliance.com)

# SUMMIT

For parts and accessory ordering,  
troubleshooting and helpful hints, visit:  
[www.summitappliance.com/support](http://www.summitappliance.com/support)

