

## REGISTER YOUR GRILL

Current has a limited 10-year warranty with product registration within 60 days from date of purchase.

Without registration, we offer a limited 5-year warranty.



## CONTACT US

Consider us your personal VIP Concierge. Our team is passionate about helping you create great food and amazing experiences, making outdoor cooking easy and accessible for all.

📞 1-866-CURRENT

✉️ [Support@CurrentBackyard.com](mailto:Support@CurrentBackyard.com)

💬 Or live chat with an agent at [www.CurrentBackyard.com](http://www.CurrentBackyard.com)

## WELCOME TO CURRENT®

I'm thrilled to welcome you into our electric cooking community. We founded Current® on the belief that outdoor cooking should be limitless - no longer restricted by space, fuel, or inconvenience. That's why we completely reimagined the grill, swapping gas for electricity to make it more accessible, easier and more efficient.

Your new Model G2 Dual Zone Electric Grill is the result of that vision: a sleek, state-of-the-art cooking system that's a smart addition to your home. It's designed to make outdoor cooking feel simple, yet elevated, whether you're on a high-rise balcony, a townhome patio, or in your backyard. With Current®, anyone can experience the joy of outdoor cooking.

Thank you for trusting us to change the way you cook outdoors. We are committed to making sure your experience is seamless from day one. Whether you have a question about the app or need help with setup, we're here to ensure nothing stands between you and delicious food.

Sincerely,

Tom Penner - CEO

## SOCIALS

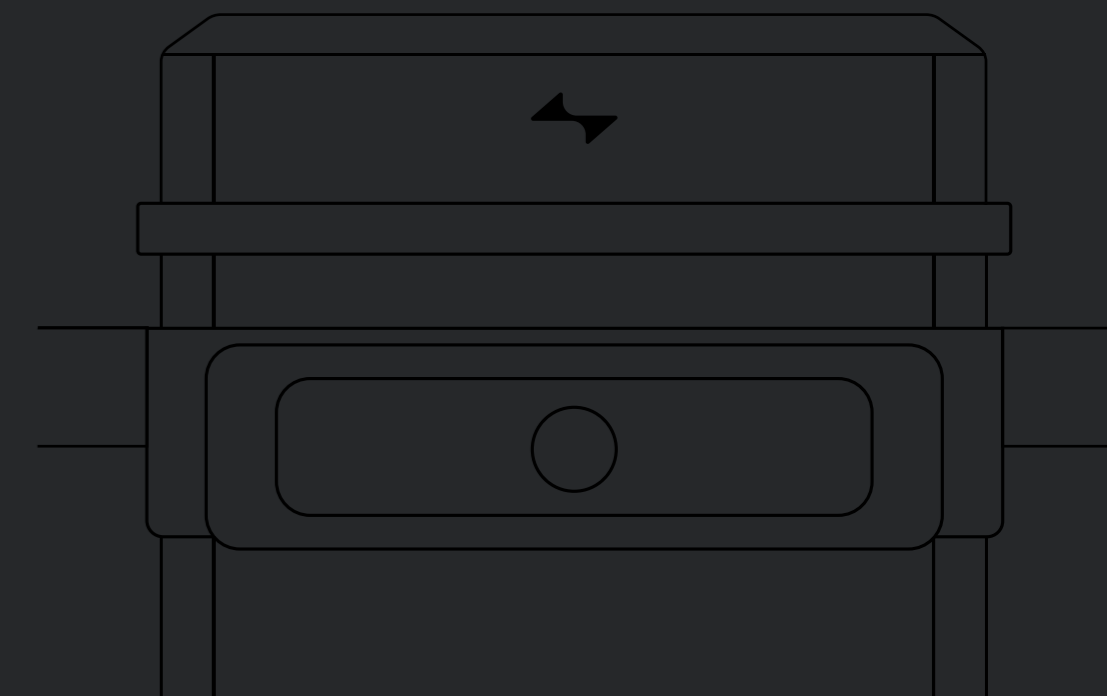
Connect with Current®.

Follow us on socials for inspiring content, education, and news.



## MODEL G2

Quick Start Guide



CURRENT

CURRENTBACKYARD.COM  
Current Backyard, LLC 2026®  
All rights reserved.

AW#CUR-25-76

26554001 26554001A  
26554002 26554002A  
26554003 26554003A  
26554005 26554005A



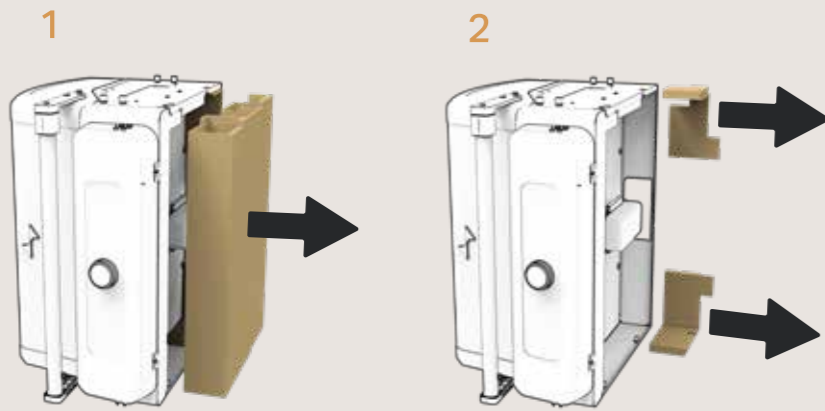


## PLEASE READ BEFORE UNPACKING

### Prior to assembly:

With two people, place the grill head on its side on cardboard or other clean, soft surface to prevent scratching.

Remove packaging material from below grill head as shown below.



## FOR BEST RESULTS

A 15A breaker with a 15A GFCI outlet is the minimum requirement to run your grill.

## GETTING STARTED

Download and connect to the Current App for ultimate control of your new grill.

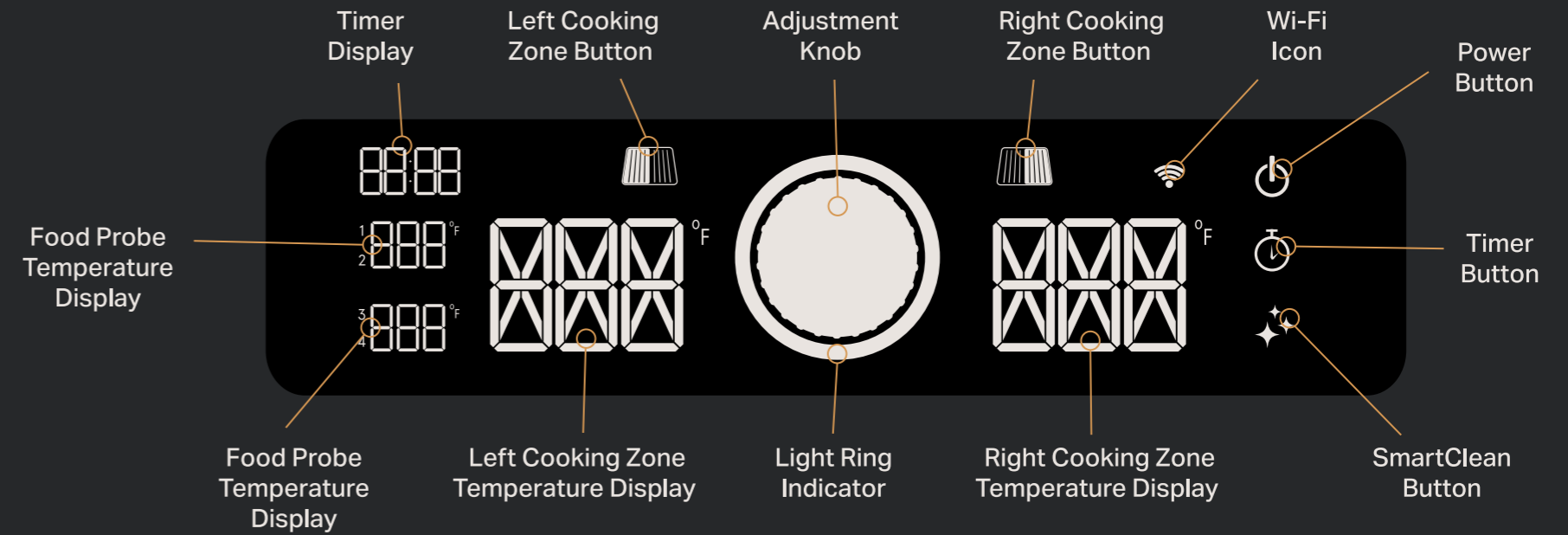


To assemble your grill, we recommend using the BILT App that you can download here.

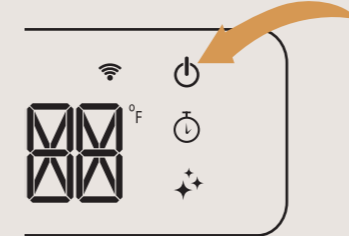


# BILT.

## KNOW YOUR CONTROLS

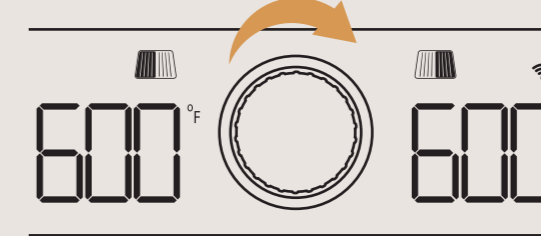


### STEP 1



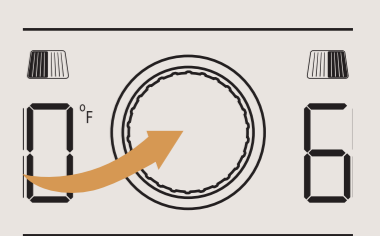
Plug in grill - Press Power Button to turn on

### STEP 2



Turn knob to set grill to desired temperature

### STEP 3



Push knob to confirm and start preheating

### LIGHT RING INDICATOR GUIDE



**SOLID BLUE**  
Power on; Idle Mode



**FLASHING RED**  
Preheating Mode



**SOLID RED**  
Set Temp Reached



**FLASHING YELLOW**  
SmartClean Mode\*\*



**FLASHING ORANGE**  
Error Mode\*

\*\*Press knob to confirm and start SmartClean

\*See Instruction Manual for Error Code Guide

