

# SW6

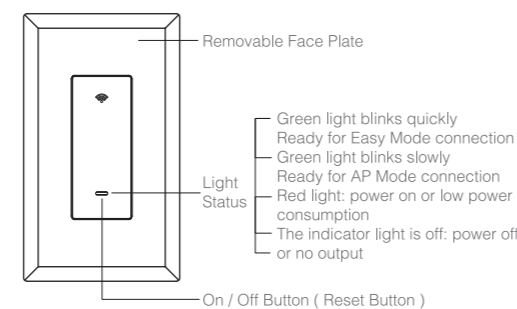


Since the device only supports 2.4G Wi-Fi connection, please ensure that the mobile phone and the device are connected to 2.4G Wi-Fi simultaneously.

## Parameters

Model: SW6  
 Input: 120V~ 50/60Hz  
 Output: 15A Max. (Travaler1+Travaler2)  
 Wi-Fi Frequency: 2.4GHz only  
 Wireless Standard: IEEE802.11 b/g/n  
 Operating Temp.: 0~40°C  
 Operating Control Type 1  
 Pollution Degree: 2  
 Impulse Voltage: 2500V

## Product Overview



Green light blinks quickly  
 Ready for Easy Mode connection  
 Green light blinks slowly  
 Ready for AP Mode connection  
 Red light: power on or low power consumption  
 The indicator light is off: power off or no output

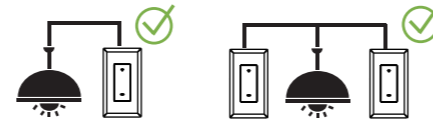
-2-

## Before You Install

### Installation Tips!



Incorrect installation may be dangerous or illegal. Multiple circuit breakers may need to be de-energized for safe installation. If you are not familiar with electrical work, please call a professional electrician.



## Before You Install

**Live Wire (Line Wire):** A live wire is a wire carrying an electric current. If you keep your tester here, it will show indication when power is there.  
**Load Wire:** The load wire connects your light switch to your light fixture. It is usually attached to a brass terminal on the previous switch. It is sometimes black or red.  
**2 load wires are required for connecting with dual dimmer switch.**

-4-

**Neutral Wire:** A neutral wire which normally in white color allows the switch to be powered while simultaneously allowing the lighting circuit connected to your lights to be power off.

**Ground Wire:** Ground wire is a bare copper wire that provides a conducting path to the earth.

If the wires in your switch wall box are different from the ones listed below, we recommend consulting a qualified electrician.

## Identify Wires By Color

Tip #1: An easy way to identify the wires in your wall box is by looking at the color.

Neutral	White or Grey
Ground	Green, Copper or Green with Yellow Strip
Line	Black
Load	Red or Black
Traveler	White or Black

-5-

## If Line and Load Are Both Black

Tip #2: The Load wire is usually coming from the top of the box. The Line wire is usually coming from the bottom of the box.

Tip #3: Before removing the switch, test each wire with a voltage tester.

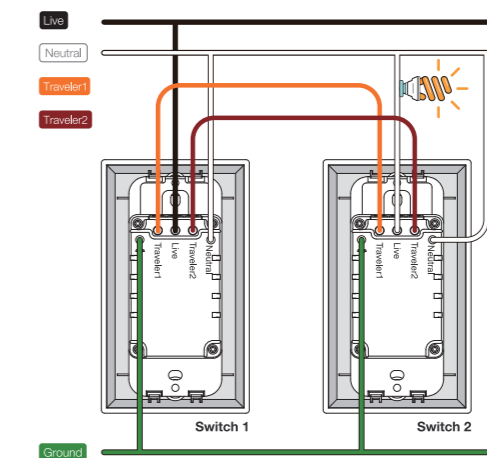
**CAUTION:** Risk of electric shock. Do NOT touch any wires during this process.

- After removing the face plate, turn the breaker back on.
- Very carefully, press the voltage pen against each wire.
- The pen will glow red when the wire is hot.
- The wire that causes the pen to glow red is the hot wire; also known as the Line wire.
- The wire that does not cause the pen to glow red is the Load wire.

**CAUTION:** Risk of electric shock. Before continuing with the rest of the installation process, make sure to turn the power breaker off.

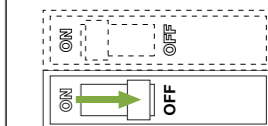
-6-

## Install the 3-way Switch Kit



## Install the Switch

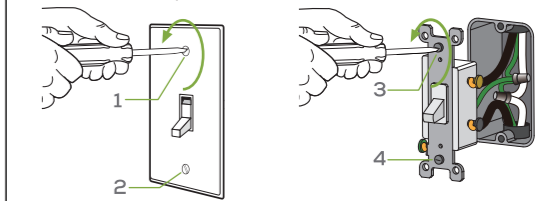
**Step 1** Shut OFF the power at the circuit breaker for the switch you are replacing.



You may need to shut OFF more than one circuit breaker/switch to make sure the switch you're working on is powered OFF.

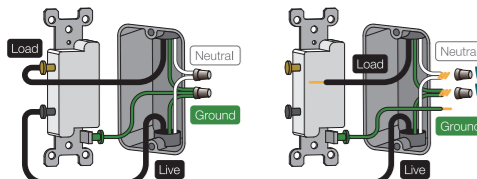
**IMPORTANT:** USE A NON-CONTACT VOLTAGE DETECTOR OR FLIP YOUR LIGHT SWITCH A FEW TIMES TO MAKE SURE THAT THE POWER IS OFF.

**Step 2** Unscrew the old switch and pull it out of the wall by using a screwdriver. Do not remove any wires.



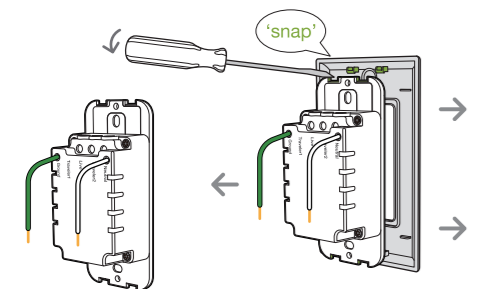
Remove the wall plate from switch. Remove the switch and pull it away from the wall.

-8-



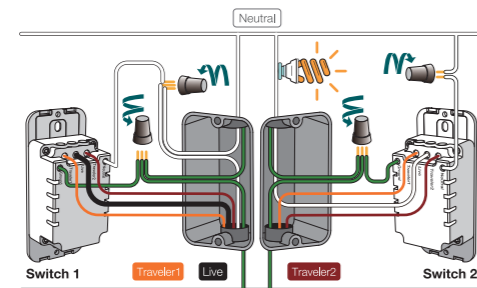
Disconnect all wires from the switch.

**Step 3** Install the Switch. Insert wire to the terminal, then tighten the screw.

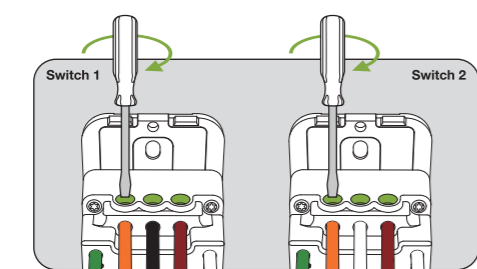


Use a flat-head screwdriver to pry open the panel.

-9-



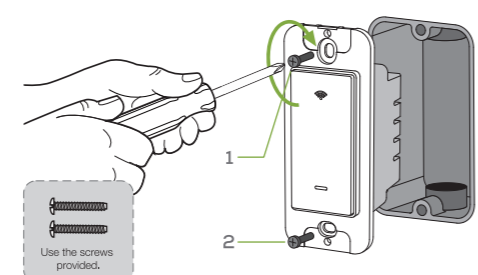
Connect the wires in order.



Tighten the incoming wires.

-10-

**Step 4** Mount the device using the provided screws.



Use the screws provided.

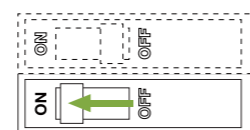


Close the top cover.

-11-

(If you installed the dimmer next to other dimmers or switches, you'll need to install a wallplate with the correct size/number of openings to accommodate all the devices.)

**Step 5** Turn power on at circuit breaker.



## How to Download the App

- Option 1:** Search for "Gosund" in the Apple APP Store or Google Play.
- Option 2:** Scan the QR code below to enter the download page.



-12-

## How to Pair with the App

1. Open the APP and create your account.
2. Turn on the switch and put it close to the router when pairing.
3. Press and hold the ON/OFF button for 5 seconds and release it when the switch starts blinking fast, enter the network pairing mode.
4. Tap "+" on the upper right corner to select "Add Manually", and then select "Switch (Wi-Fi)". Follow the App instructions to complete the operation.

## Reset

Turn on the power, hold the Reset button for 5 seconds and let it go when the Switch starts to flash quickly, the reset is successful.

When the Switch is in a new network environment, you need to restore the factory settings, and then reconnect to the network.

-13-

## Warnings and Precautions

- Keep it out of the reach of children and pets.
- Do not use this product in humid environments or outdoors. It's for indoor use only.
- Do not place this product near heating devices, such as microwave ovens, stoves, or radiators.
- Protect the product from extreme temperatures, direct sunlight, strong jolts, high humidity, moisture, flammable gases, vapors and solvents.
- Do not disassemble, modify, or repair your device, and ask help from the authorized professionals for device malfunction.
- Do not use the device when it is no longer working properly or visibly damaged.
- Do not store the device for extended periods in poor ambient conditions.
- Never use aggressive detergents such as rubbing alcohol or other chemical solutions because these could damage the casing or even impair the functioning of the product.

**Note:** The image shown in the manual is indicative only. If there is inconsistency between the image and the actual product, the actual product shall govern.

-14-

## FCC Warnings

**NOTE:** This equipment has been tested and found to comply with the limits for a Class B digital device, pursuant to part 15 of the FCC Rules. These limits are designed to provide reasonable protection against harmful interference in a residential installation. This equipment generates uses and can radiate radio frequency energy and, if not installed and used in accordance with the instructions, may cause harmful interference to radio communications. However, there is no guarantee that interference will not occur in a particular installation. If this equipment does cause harmful interference to radio or television reception, which can be determined by turning the equipment off and on, the user is encouraged to try to correct the interference by one or more of the following measures:

- Reorient or relocate the receiving antenna.
- Increase the separation between the equipment and receiver.
- Connect the equipment into an outlet on a circuit different from that to which the receiver is connected.
- Consult the dealer or an experienced radio/TV technician for help. Changes or modifications not expressly approved

-15-

by the party responsible for compliance could void the user's authority to operate the equipment.

This device complies with Part 15 of the FCC Rules. Operation is subject to the following two conditions: (1) this device may not cause harmful interference, and (2) this device must accept any interference received, including interference that may cause undesired operation.

**RF Exposure Warning Statements:**  
 This equipment complies with FCC radiation exposure limits set forth for an uncontrolled environment. This equipment shall be installed and operated with minimum distance 20cm between the radiator & body.



4.02.000.0872 V2.0

料号: 4.02.000.0872 V2.0

名称: SW6白牌说明书

材质: 105g哑粉纸 / 正反面4色印 / 风琴折

尺寸: 75X100mm



正面

背面