



2IN1 FACIAL
STEAMER



Newbealer

Newbealer

2In1 FACIAL STEAMER

NB-8318B

IMPORTANT SAFETY INSTRUCTIONS

When using electrical appliances, especially when children are present, basic safety precautions should always be followed, including the following:

READ ALL INSTRUCTIONS BEFORE USING

DANGER—To reduce the risk of electrocution:

1. Always unplug this appliance immediately after using.
2. Do not use while bathing.
3. Do not place or store appliance where it can fall or be pulled into a tub or sink.
4. Do not place in or drop into water or other liquid.
5. Do not reach for an appliance that has fallen into water. Unplug immediately.

WARNING – To reduce the risk of burns, electrocution, fire, or injury to persons:

1. An appliance should never be left unattended when plugged in.
2. Close supervision is necessary when this appliance is used by, on, or near children or individuals with certain disabilities.
3. Use this appliance only for its intended use as described in this manual. Do not use attachments not recommended by the manufacturer.
4. Never operate this appliance if it has a damaged cord or plug, if it is not working properly, or if it has been dropped, damaged, or dropped into water. Return the appliance to a service center for examination and repair.

5. Keep the cord away from heated surfaces. Do not wrap the cord around the appliance.
6. Never block the air openings of the appliance or place it on a soft surface, such as a bed or couch, where the air openings may be blocked. Keep the air openings free of lint, hair, and the like.
7. Never use while sleeping.

USING TIPS

1. Use only distilled water or pure water in the tank. Do not add other liquids.
2. Before adding water, you must turn off and unplug the unit. Then add water to the water tank.
3. The new machine may have a slight odor. It is recommended to use distilled water or purified water and let the steamer run a few times prior to your first use.
4. While using the high-temperature steam will be sprayed. Please adjust the distance between the face and the nozzle (about 25cm) according to the degree of heat sensitivity to avoid scalding the skin.
5. Do not adjust nozzle while steaming to avoid scald.
6. Please keep your steamer stable and in a safe place. Refrain from moving your machine often, especially when in use.
7. Not for use for individuals with heat-sensitivity issues or equipped to avoid burns such as the elderly and children.

Features

2IN1 FACIAL STEAMER -- Combination of Steamer and Aroma Diffuser

*Hot steam opens pores so skin is more receptive to serums, masks, and treatments.

*The aromatherapy function allows you to add favorite essential oils for boosted steaming sessions, creating a high level of fragrance.

*An extra chamber to warm little towels for ultimate refreshment or quick and easy makeup removal.

*Ozone-free, healthier and safer.

*Enjoy a professional facial spa at home easily.

Skincare Routine

STEP 1. Cleaning and Care

Remove daily grime and make-up with Cleansing Brush to prepare your skin for a relaxing hot steam session.

STEP 2: Add Essential Oils

To enhance your at-home steam facial with a spa-like perk, add essential oils into the basket. Essential oils can deliver a relaxing aroma and make your steam facial even more enjoyable.

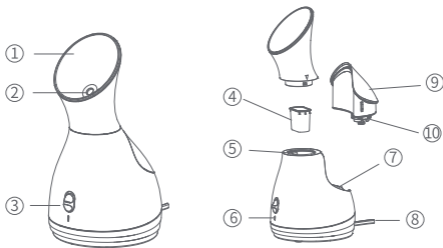
STEP 3. Hot Steam Session

For five to ten minutes, inhale and exhale slowly as you let the warm, soothing steam hit your face. To avoid irritation, keep your eyes closed.

STEP 4. MOISTURIZE

Pores are open after using hot steam, apply your favorite creams, serums and masks. All active ingredients of your mask or cream will deeply penetrate into the skin, leaving it feeling plumped and hydrated.

Parts Identification



- ① Nozzle ② Steam outlet ③ On/Off Switch ④ Aromatherapy Basket
 ⑤ Towel Warming Chamber ⑥ Indicator Light ⑦ Water Outlet
 ⑧ Power Cable ⑨ Water Tank ⑩ Water supply cap

Specification:

Product: 2IN1 FACIAL STEAMER	Rated power: 430W
Model No.: NB8318B	Frequency: 60 Hz
Working Time: 22mins	Water tank capacity: 5.74oz (170ml)

What Water to Use?

Only add distilled or pure water to the tank. Tap water is not recommended. Never use water containing additives (starch, perfume, aromatic substances, softeners, etc.), or condensation water (for example water from tumble dryers, water from refrigerators, water from air conditioning units, rainwater). This water contains organic waste materials or minerals that concentrate under the effect of heat and cause spitting, brown coloring or premature ageing of your steamer.

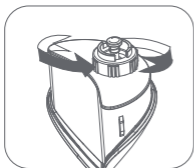
Before Use



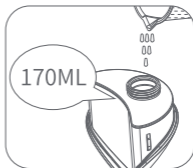
1. Wash your face before steaming.



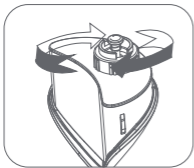
2. Take out the water tank from main unit.



3. Open the tank cap counterclockwise.



4. Add distilled water or purified water to the maximum scale of 170ml.



5. Close the tank cap clockwise.



6. Place the water tank back into place.

When the appliance is used for the first time, some water may remain around the water supply tank. This is residual water used for inspection in the factory, and does not cause any sanitation problems.

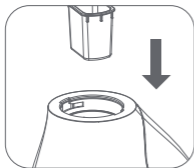
Using Aroma Basket



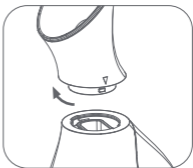
1. Unscrew the nozzle counterclockwise.



2. Put dried flowers/essential oils in the aromatherapy basket.



3. Put back the aroma basket.

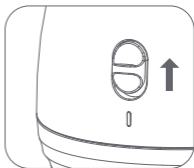


4. Insert the nozzle head back as shown on the picture, and tighten by turning it in clockwise direction.

Hot Steam Time



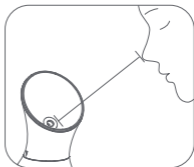
1. Plug the steamer in.



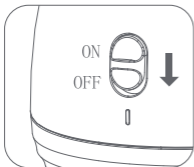
2. Slide the power switch upwards to turn on the appliance, the indicator lights up red.



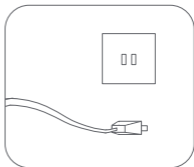
3. In about 80 seconds the machine will spray hot mist.



4. Adjust according to your skin's heat sensitivity by taking a distance between the face and the steam nozzle (keep at least 25cm away).



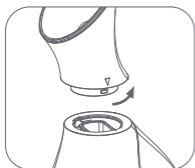
5. Slide the power switch downwards to turn off the appliance and indicator light off.



6. Plug off after use

If there is no water in the water supply tank, no steam will emit from the steam outlet. Please turn off the appliance and add water after allowing the appliance to cool down for at least 5 minutes.

Using Towel Warming Chamber



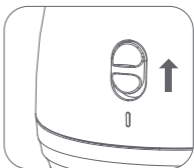
1. Unscrew the nozzle counterclockwise.



2. Take out the aromatherapy basket.



3. Put the little towel in the towel warming chamber.



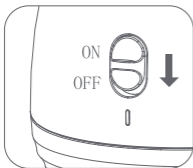
4. Slide the power switch upwards to turn on the appliance, the indicator lights up red.



5. Wait minutes until the towel heats up.



6. Take out the warm towel and apply it to your face, it's good for opening the pores to clean the residue on the surface of the face, detoxify, promote blood circulation.



7. Slide the power switch downwards to turn off the appliance and indicator light off. Plug off after use.

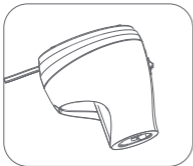
After Use



1. After use, let it sit for 5 minutes until the residual water temperature drops.



2. Remove water tank and the nozzle.



3. Turn the machine upside down and pour out the residual water.



4. Wipe the device down with a damp cloth or fabric.

NOTE: Water containing mineral levels will vary depending on the place where you live in. To ensure the continuous operation of the steamer, never store it without cleaning and removing excess water from the water container or tank.

If you fill your steamer with tap water, you may experience mineral build-up due to the high mineral content in the water supply in many cities. Mineral residue inside your steamer's internal heater may cause intermittent steaming or, in severe cases no steaming at all.

To avoid the problem, only use purified water or distilled water in your steamer. If you are unable to use purified or distilled water, we recommend you to follow the cleaning procedure below at least once a month to help avoid mineral build-up.

Anti Calc

- Anti-calc operation can be done if you notice your appliance performance has decreased.
- Do this operation in a vented room.

Steps:

Use Citric Acid or White Vinegar

01. Add 0.06oz citric acid into the base of tank, fill up the reservoir with distilled water and then install it back to the appliance. (you can also use 50% water and 50% white vinegar).

02. Let the citric acid solution rest in the unit for 5 minutes.

03. Shake the device from side to side & lift the water tank up and down.

Drain steamer with hot mist

04. Refill with distilled water, let the steamer heat to steaming for minutes.

05. Check steam status. Feel free to repeat the above process 2-3 times if the steam is still abnormal.

Tips

Mask absorption

Step1: add lavender essential oil

Step2: hot steam for 8 to 10 min

Step3: apply the mask and steam it cold for 10-15min at the same time

Step4: humidify the environment for 40min

Sensitive skin

Step1: add chamomile essential oil

Step2: cold steamed 10-15 min

Step3: humidify the environment for 40min

After sun repair

Step1: add chamomile or rose essential oil

step2: steam cold for 10-12min

Step3: humidify the environment for 40min

Troubleshooting

If your Facial Steamer is not operating properly, please check if it is related to any of the following problems or conditions. If you are still unable to detect and solve the problem, please contact us to ask for a replacement. Service mailbox: newbealer@outlook.com

Problems	Possible Causes	Solutions
Device does not give any steam	The steamer is not plugged in or not switched on.	Check that your steamer is correctly plugged in and switched on.
	Household power fuse is broken.	Reset or replace fuse.
	The water tank is not fully in place.	Ensure that the water tank is clicked in properly.
	The steamer is not heated to full temperature.	Fill with water but no further than the full mark, leaving about 1/2" space.
	Calcium build-up.	Refer to 'ANTI CALC' section below in instructions for use.
Water leaks	There water tank is overfilled.	Fill with water leaving about 1/2" space, do not overflow.
	The appliance is in a titled position.	Gently put steamer in a flat position. Keep the device stable and don't shake or move it during use.
	The water tank is not fully in place or the cover is not closed properly.	Ensure that cover is closed and that the water tank is clicked in properly.
Water spits	You are using water with additives.	Never add any additive in the water tank.
	The water is too hard.	Read carefully the "What water to use" section.
	There is remaining water after last use which became condensation water and stored in the steam head.	After each use, empty the water tank.
	The appliance has not been rinsed enough after the descaling operation.	Read carefully the 'ANTI CALC' section in instructions for use.

Warranty Details

Thank you for selecting Newbealer Facial Steamer. Enjoy a warranty for one year!

If you experience any issues with this product, or its performance is not what you had expected, please contact us, we would like to offer a replacement.

SAVE THESE INSTRUCTIONS

Please read this manual carefully before using and keep this in a safe place for future reference.