

Product Manuals

Model: WX003

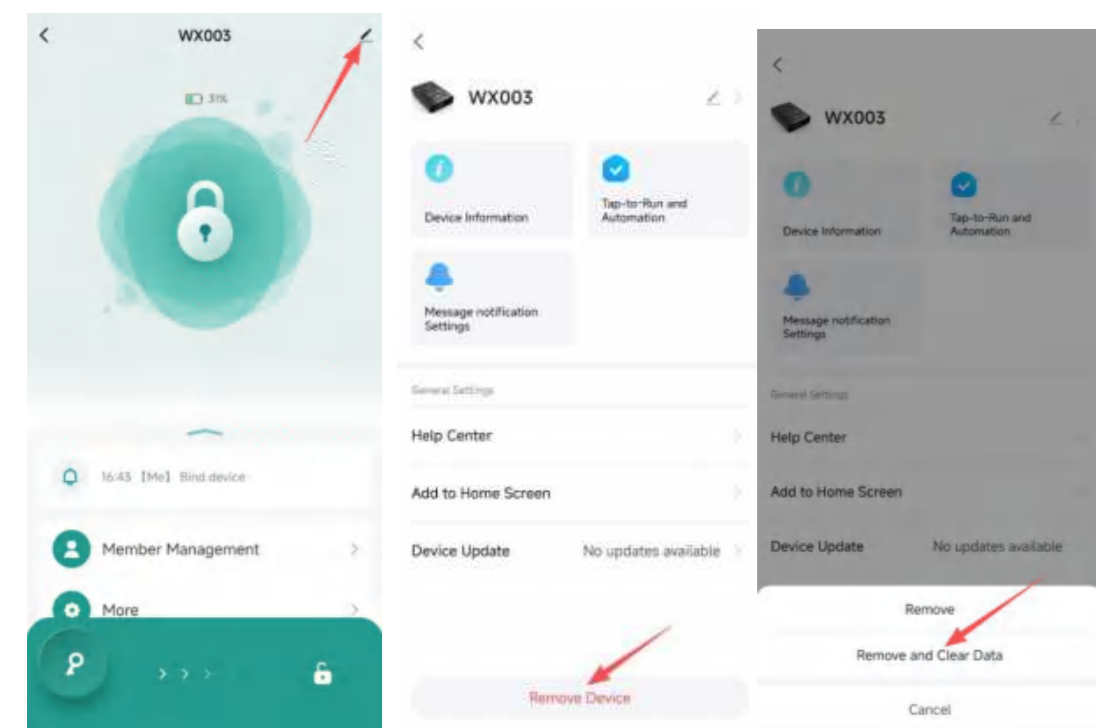
NOTE: This equipment has been tested and found to comply with the limits for a Class B digital device, pursuant to Part 15 of the FCC Rules. These limits are designed to provide reasonable protection against harmful interference in a residential installation. This equipment generates, uses and can radiate radio frequency energy and, if not installed and used in accordance with the instructions, may cause harmful interference to radio communications. However, there is no guarantee that interference will not occur in a particular installation. If this equipment does cause harmful interference to radio or television reception, which can be determined by turning the equipment off and on, the user is encouraged to try to correct the interference by one or more of the following measures:

- Reorient or relocate the receiving antenna.
- Increase the separation between the equipment and receiver.
- Connect the equipment to a power outlet on a circuit different from that to which the receiver is connected.
- Consult the dealer or an experienced radio/TV technician for help.

Warning: changes or modifications not expressly approved by the party responsible for compliance could void the user's authority to operate the equipment

Radiation Exposure Statement
This equipment complies with FCC radiation exposure limits set forth for an uncontrolled environment.
This equipment should be installed and operated with minimum distance 20cm between the radiator and your body.

7. When you need to re-pair the account, perform the app to remove the device.



12

THANK YOU

We stand by our product and our customers. On behalf of the entire team, we sincerely thank you for your purchase.

TABLE OF CONTENTS

- P2 1 Product Introduction
- P3 1.1 Power Supply
 - 2.1 Battery Installation (Batteries NOT Included)
- P4 2.2 Unlock the Safe with Key
 - 2.3 Setting Password
- P5 2.4 Unlock the Safe with Password
 - 2.5 Setting Fingerprint
- P6 2.6 Unlock the Safe with Fingerprint
 - 2.7 Delete Fingerprint and Password
 - 2.8 Lockout Mechanism
- P7 3.1 LED Touch Screen
- P8 3.2 LED Touch Screen-Set Time
- P9 3.3 Wireless Charging
 - 3.4 Security the Safe

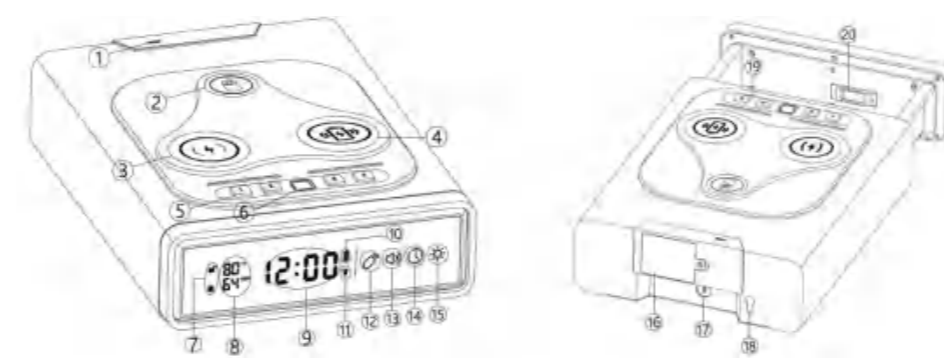
PACKAGE INCLUDES

- Fingerprint Safe *1
- Security Cable *1
- Power Adapter *1
- Key *2
- USB-TypeC Cable *1
- Rubber Pad *4

1

1 PRODUCT INTRODUCTION

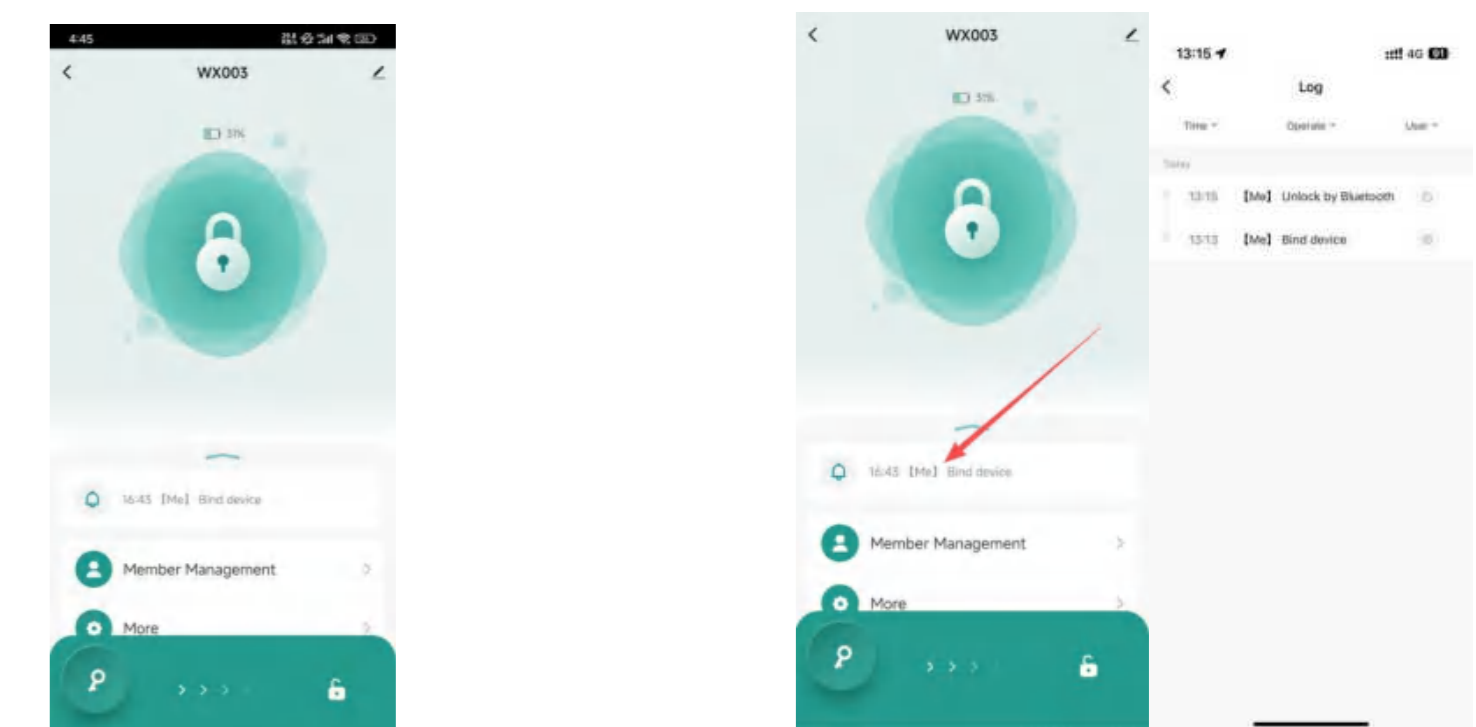
The safe is a durable biometric access safe. Its sturdy structure and penetration-resistant design make it ideal for storing valuable items such as firearms, jewelry, cash, and personal belongings. The safe combines advanced security with comprehensive access control.



- 1.type-c
- 2.Headphone charging
- 3.Wireless charging for mobile phones
- 4.Wireless charging for mobile phones
- 5.Digital buttons
- 6.Fingerprint recognition
- 7.Open and closed state
- 8.Temperature and humidity display
- 9.Time display
- 10.Battery level display
- 11.Power connection display
- 12.Bluetooth
- 13.Turn on the volume function
- 14.Set the time
- 15.Screen onstantly on/off function
- 16.Battery box
- 17.Emergency Key Hole
- 18.Security Cable Hole
- 19.Setting Button (On The Top Part Inside The Box)
- 20.Internal LED

2

5. After pairing, the lock can be unlocked with one click, and the lock can be unlocked by sliding through the app. 6. You can view the door opening record, electricity, error alarm and other information.



11

- 1.Direct search: Go to the app store, or go to the Google App Store to download "Tuya APP".
- 2.Scan the QR code to download Tuya APP



- 3.Touch the Remote Connection Button , then press once the Setting Key. The safe body will emit a signal for pairing with the Tuya App. The button's blue flashing light indicates connection is in progress. A solid green light indicates a successful connection. Once connected, the Bluetooth unlock function via the app becomes available.
- 4. Enable the Bluetooth function of the mobile phone



10

1.1 Power Supply

NOTE: Please connect the power adapter before use. Batteries are only for emergency opening of the lock mechanism.
1. The lock mechanism can be powered by either the batteries or the power adapter. With both source connected, the adapter will have the priority for supplying power to the lock.
2. If you choose to use the safe with the adapter connected, you can skip battery installation in 2.1.

2.1 BATTERY INSTALLATION

- 1. On the back of the safe, uncover the battery compartment.
- 2. Load 4 AAA batteries (batteries not included) into the compartment.

Caution:

- Please use alkaline or carbon batteries.
- Do not mix old and new batteries.
- The safe cannot be powered by rechargeable batteries.

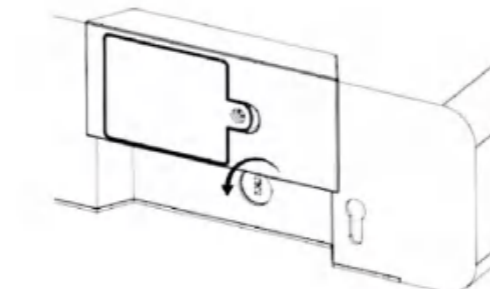
Low Battery Warning

When the battery voltage is lower than 4.8V, the buzzer beeps 5 times when opening the door. Please replace the battery as soon as possible.
Note: When the battery is nearly depleted, it can no longer support door opening.

3

2.2 UNLOCK THE SAFE WITH KEY

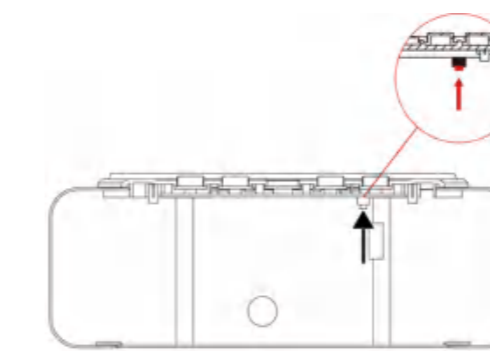
- Place the Emergency Key into the Emergency Key Hole on the back of the safe.
- Rotate the key and the door will open automatically.



2.3 SETTING PASSWORD

- First-time users should change the Default Password "1234" as soon as possible to prevent unauthorized access to your safe.
- Setting a new password will overwrite the old one.
- Only one password can be set.

- 1. Entering Setup Mode
In standby mode, press and hold the setting button for 2 seconds until the buzzer beeps twice and the blue indicator flashes twice. The fingerprint sensor area will light up.
- 2. Setting a New Password
Enter a new password consisting of 4 to 8 digits. Wait for 2 seconds; the buzzer will emit one long beep to indicate that the operation is complete. In silent mode, a green light at the fingerprint sensor indicates successful operation.



4

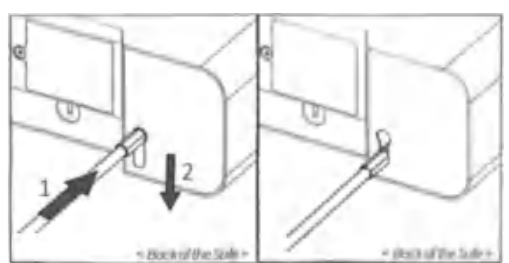
3.3 WIRELESS CHARGING

NOTE: Wireless charging can only be used when the power adapter is connected. To ensure proper functionality of wireless charging, please use a thin phone case or remove the phone case altogether.

Place a smartphone with wireless charging capability on the wireless charger pad, and the wireless module will automatically detect the phone for charging. You can observe the charging symbol on the phone screen, indicating that the charging is in progress.

3.4 SECURITY THE SAFE

- Using Security Cable
STEP 1: When the safe is in the unlocked state, loop the security cable around a secured object.
STEP 2: Run the end of the cable through the eye of the other end and pull tight around the object.
STEP 3: Open safe drawer and insert the clamped end of the security cable into the rear slot.
STEP 4: Slide the cable end all the way down.
STEP 5: Shut the safe drawer to lock the security cable in place.



NOTE: The security cable can only be inserted and removed while the safe drawer is open.

9

3.2 LED TOUCH SCREEN-SET TIME

Smart Safe Operation Guide

- 1. Remote Connection Button
Touch the Remote Connection Button (A), then press the Settings Key. The safe body will emit a signal for pairing with the Tuya App. The button's blue flashing light indicates connection is in progress. A solid green light indicates a successful connection. Once connected, the Bluetooth unlock function via the app becomes available.

- 2. Volume Button
The Volume Button (B) is blue by default when volume is ON. In this state, audible feedback (a "beep") will sound when entering a password or using the fingerprint sensor. Touch the Volume Button to switch to Mute mode; the button will illuminate red in this state.

- 3. Clock Setting Button
Touch the Clock Button (C) to enter clock setting mode. The time display will blink. Use the numbered password keys above to set the time as follows:
* Keys 1, 2, 3, and 4 correspond to the four digits of the time display (e.g., hours and minutes).
* Press a key once to switch to and adjust its corresponding digit.
* To confirm and save the new time, touch the Clock Setting Button again within 10 seconds. The setting is successful only after this confirmation.
* If no action is taken for 10 seconds, the system will exit time setting mode and the changes will be discarded.

- 4. Brightness Adjustment Button
The Brightness Button (D) is blue when Screen Always-On mode is active. The screen has three brightness levels, which can be cycled through by touching the button once.
* "Always-On Mode": In this state, the screen will not dim or turn off. *Note: This mode can only be activated when the safe is connected to a power adapter.*
* To deactivate Always-On mode, press and hold the Brightness Adjustment Button until it turns red. In standard mode (not Always-On), the screen display will automatically turn off 10 seconds after the last interaction.



8

2.4 UNLOCK THE SAFE WITH PASSWORD

- Enter the password you have set, and the door of the safe will automatically open.

2.5 SETTING FINGERPRINT

- STEP 1: In standby mode, press and hold the setting button for 2 seconds until the buzzer beeps twice and the blue light flickers twice. And the fingerprint area will light up.
- STEP 2: After 5 press, the buzzer will beep twice and all light will off. It means the fingerprint setting is successful. In silent mode, a green light at the fingerprint sensor indicates successful operation.

NOTE:

The safe can store up to 30 fingerprints.
The default password will be invalid after setting fingerprints.

5

2.6 UNLOCK THE SAFE WITH FINGERPRINT

- Press your finger which has already registered onto the fingerprint scanner, and the door of the safe will automatically open.

2.7 DELETE FINGERPRINT AND PASSWORD

- Press and hold the Setting Button for 6 seconds, during which the digital keypad will blink four times. Then the blue light turns off and all the fingerprints and passwords are deleted. The password will be reset to "1234".

2.8 LOCKOUT MECHANISM

- The safe will be locked for 1 minute in the following two situations:
(1) If the password is entered incorrectly 3 times in a row.
(2) If the fingerprint is entered incorrectly 3 times in a row

The alarm and lockout will stop once the power is disconnected, and the safe can be unlocked by entering the correct password.

Note:

- Once the locking mechanism is triggered, all keypad buttons will be disabled.
- During the lockout period, entering the password or fingerprint will be ineffective.
- The keypad's BLUE light will flash and the safe will emit beeping sounds during the lockout period.

6

3.1 LED TOUCH SCREEN



Touch the display screen area to wake it up. It can sense and display the real time, temperature, humidity and door lock status.

Battery Status:
Power Supply for the Display
The display supports three power supply methods:
1. Wireless Charging Adapter
2. 4 Alkaline AAA Batteries

Power Source Priority
Give priority to displaying the battery level of the wireless charging adapter. We recommend powering the safe using the wireless charging adapter, as this allows all functions of the safe to be used simultaneously.

Note: The Always-On Display feature is only available when the display is powered by the Wireless Charging Adapter. For optimal use, we recommend connecting the Wireless Charging Adapter upon receipt of the product. This enables the following features simultaneously:

- 1. Always-On Display Functionality
- 2. Wireless Charging Function for Mobile Phones
- 3. Wireless charging for headphones — Apple devices only.

7

