

SENCOR®

SBL 4871WH
SBL 4872BK



TABLE BLENDER

Translation of the original manual

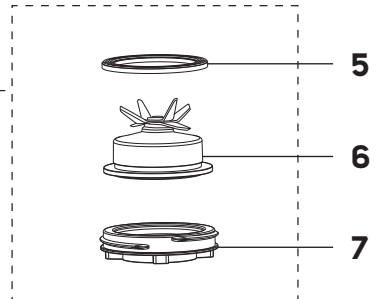
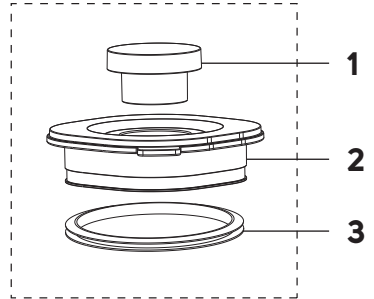
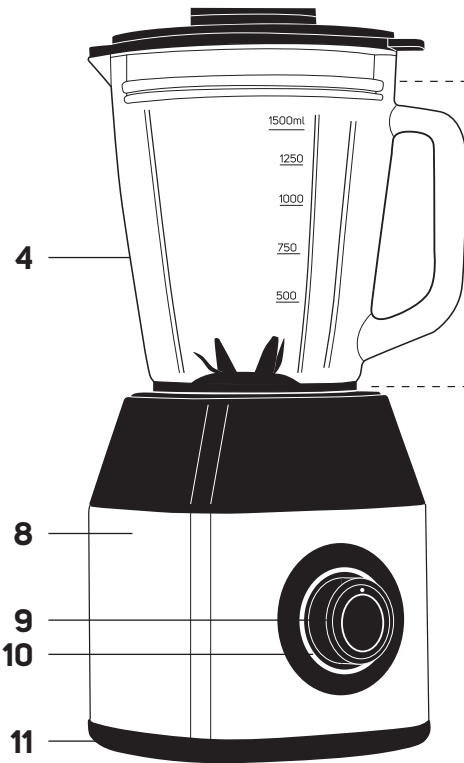


SENCOR®

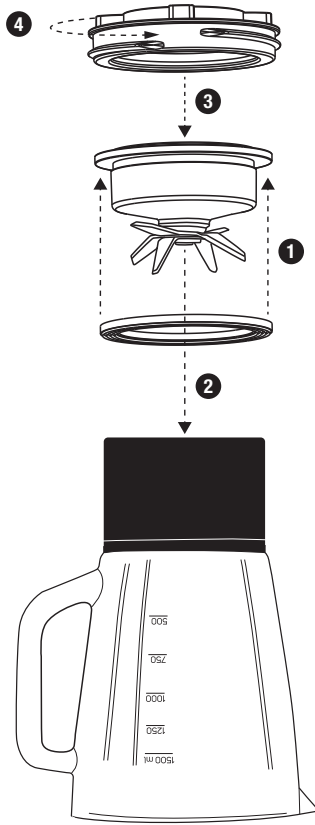
SBL 4871WH
SBL 4872BK



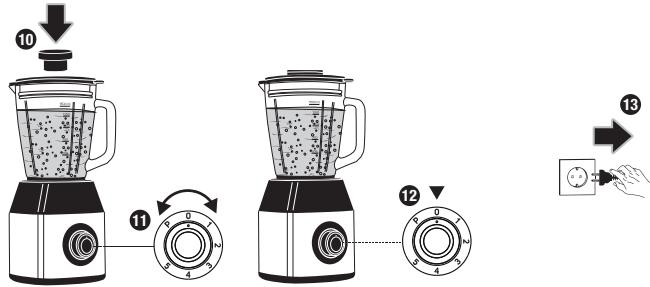
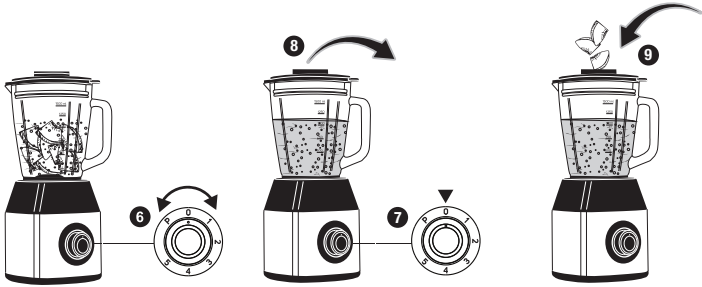
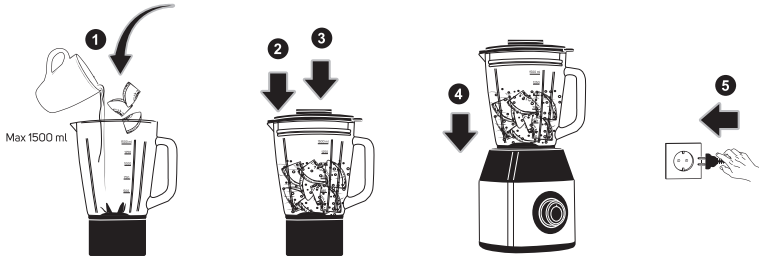
A



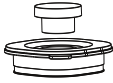
B



C



D



EN Table Blender

Important Safety Instructions

READ CAREFULLY AND STORE FOR FUTURE USE.

General Warnings

- Persons with reduced physical, sensory, or mental capabilities or with a lack of experience and knowledge may use this appliance only if they are supervised or have been instructed on how to use the appliance safely and understand the potential hazards.
- This appliance is not to be used by children. Keep the appliance and its supply out of the reach of children.
- Children must not play with the appliance.
- This appliance is designed for domestic use and similar premises, such as:
 - kitchenettes in shops, offices and other work environments;
 - agricultural farms;
 - in hotels, motels and other residential environments (in these facilities the appliance is intended for use by guests);
 - bed and breakfast establishments.
- This appliance is not intended for commercial use.

**Caution:**

To avoid danger due to sudden resetting of the thermal fuse, this appliance must not be powered via an external switching device such as a time switch, or connected to a circuit whose characteristic is that it switches on and off periodically.

- If the power cord is damaged, have it replaced in a professional service centre in order to prevent a dangerous situation. It is forbidden to use the appliance with the power cable damaged.
- To avoid injury from the chopping blades, take extra care when handling the blade unit, especially when assembling the appliance, emptying the container, removing the blade unit from the container and during cleaning.
- Take special care if you pour hot liquid into the blender container, as it may splash out of the appliance due to sudden evaporation.

**Warning:**

Improper or unintended use can lead to injury.

**WARNING:**

Always operate the blender with the lid in place, as described in this user's manual.

- Never place your hand in the blender container when placed on the motor unit.
- If you need to press down the food in the container, use a suitable kitchen utensil such as a kitchen spatula.

- The maximum operating time is 1.5 minutes. Allow the appliance to cool for at least 5 minutes before using it again. Do not exceed the maximum operating time and observe the cooling time of the appliance.
- Food processing times and speed settings are listed in the chapter QUICK GUIDE TO PROCESSING INGREDIENTS.
- Before replacing the accessories or accessible movable parts, please turn the appliance off and disconnect it from the power supply.
- Always disconnect the appliance from the power socket if you are leaving it unattended and before assembly, disassembly or cleaning.
- Clean the food contact surfaces of the appliance and its accessories according to the instructions in the chapter CLEANING AND MAINTENANCE.

Additional Important Safety Instructions for Use of the Appliance

- Use the appliance and its accessories in accordance with the instructions in this manual.
- The appliance is designed for mixing food and liquids. Never use the appliance for purposes other than those for which it was designed.
- The appliance is designed for indoor use. Do not use the appliance in an industrial environment or outdoors.
- It is forbidden to modify the surface of the appliance in any way, e.g. using self-adhesive foil, etc.
- Do not expose the appliance or its accessories to the outdoor environment, extreme temperatures, rapid temperature changes, direct sunlight or excessive dust.
- Always place the appliance on a clean, flat, dry and stable surface. Do not place it on the edge of the table to prevent it from falling.
- Do not place the appliance and its accessories on or near an electric or gas hob. Keep it at a sufficient distance from open fire, heating elements and other sources of heat. Do not place it or any part of it into the freezer.
- Before connecting this appliance to a power socket, make sure the rated voltage stated on the product's rating label corresponds to the voltage in your power socket.
- Do not place heavy objects on the power cord. Make sure the power cord does not hang over the edge of a table or that it does not touch a hot surface.
- The use of an extension cable is not recommended.
- Only use the appliance with original accessories from the manufacturer.



Warning:

The use of non-original accessories can lead to a dangerous situation.

- Before use, always make sure that no part of the appliance is damaged. Do not use the appliance if the motor unit, container, lid, blade unit or screw nut is damaged in any way.
- Do not overfill the blender container. The maximum capacity of the blender container is indicated by the 1,500 ml mark.
- To avoid a dangerous situation, never use the blender to process hard ingredients such as nutshells, bones, hard pits of apricots, peaches, mangoes, etc.
- This appliance is not intended for preparing dough or mashed potatoes, whipping egg whites or grinding raw meat, etc.
- Do not use the appliance to mix ingredients such as sparkling water, baking soda, baking powder, yeast, etc.
- Take extra care when handling hot liquids and food. Hot steam or splashes of hot liquids or food can cause scalding.

- The blender container is temperature resistant up to 70°C. Never put food into it or pour liquids at higher temperatures. There is a risk of scalding due to the container bursting. Placing hot food or pouring hot liquids into the blender container causes the surface to heat up. Avoid contact with hot surfaces. For added safety, allow hot liquids and foods to cool to room temperature before placing in the blender container.
- Use the handle for carrying the blender container. Move the blender container in a vertical position.
- Never mix hot foods or liquids. Allow them to cool down to room temperature before blending.
- Prior to connecting the appliance to a power socket, make sure that the appliance is properly assembled according to the instructions in this user's manual.
- The appliance is equipped with a safety lock that will not allow it to start if the container is not properly fitted to the motor unit.



Caution:

Do not use the appliance without the sealing ring of the blade unit or the screw nut that attaches the blade unit to the blender container.
Never run the blender without the lid properly attached to the blender container.



Warning:

Avoid contact with rotating parts of the appliance.
To avoid the risk of serious injury or damage to the appliance, never insert your hands, fingers, kitchen utensils or other objects into the blender container when it is attached to the motor unit.

- The appliance may vibrate during operation
- Do not turn on the appliance when it is empty. Incorrect use may negatively affect the appliance's lifetime.
- Always start the blender at the lowest speed before setting the desired speed.
- While blending, hold the lid of the container with one hand from above.
- The lid must be properly secured to the container for the entire time of operation. After removing the inner lid, food can be added to the blender container through the lid opening. Stop the blender before adding food. Add ingredients slowly in small doses. Do not add hot liquids or food. Do not go over the maximum mark. After adding food or liquids, return the inner lid back to its place.
- If food sticks to the blade unit or blender container, switch off the appliance and unplug it from the power socket. Make sure that the blade unit has stopped rotating. Carefully remove the container from the motor unit. Open the lid and use a spatula to clean the blade unit and the inside of the container. Check that only the ingredients intended for processing are in the container and close the lid properly again. Attach the container back to the motor unit. Connect the power cord to the power socket and continue blending.
- When making nut butters or processing other high-fat or thick foods, do not leave the appliance running for more than one minute after the blended mixture begins to circulate in the container. During prolonged operation, the appliance may overheat.
- If the appliance is overloaded or overheated, the motor will stop automatically. Set the speed dial to position 0, disconnect the appliance from the power socket and allow it to cool down for 30–60 minutes. The appliance can be used again once it has cooled down. Divide larger batches of food into several smaller batches or use food cut into smaller pieces.
- After use, set the speed dial to position 0 and disconnect the power cord from the power socket. Wait for the rotating parts to stop before removing the container from the motor unit.
- Unplug the appliance from the power socket by pulling the plug. Do not pull the power cord. Otherwise, damage to the power cable or the socket may occur.
- Do not connect or disconnect the power cord plug to or from the power socket with wet hands.
- None of the components of this appliance are intended for use in a microwave or electric oven, etc.
- The blender container is not designed for storing food.
- To avoid the risk of electric shock, do not immerse the motor unit, power cord or power cord plug in water or any other liquid, or wash these parts under running water.
- Do not use the appliance if it is not working properly, if the motor unit has been immersed in water or if it shows any signs of damage. Take it to an authorised service centre for inspection or repair.
- Do not make any adjustments to the appliance. Do not disassemble the motor unit.
- Do not repair the appliance yourself. All repairs should be carried out by an authorised service centre. Tampering with the appliance during the warranty period may void the warranty.
- Store the appliance in a dry and clean environment out of the reach of children and animals.

EN Table Blender

User Manual

- Thank you for purchasing our SENCOR product; we hope it will serve to your satisfaction.
- Prior to using this appliance, please read the user manual thoroughly, even in cases when you are already familiar with the use of similar types of appliances. Use the appliance only as described in this user manual. Keep the manual for future reference. If you pass the appliance on to another person, ensure that this user manual is included.
- Carefully unpack the appliance and make sure not to discard any part of the packaging material until you have found all its components. It is recommended to keep the original packaging, packing material, receipt and confirmation of the extent of the seller's liability or warranty certificate at least for the duration of the legal right of defective performance or quality guarantee. When transporting the appliance, we recommend packaging it again in the original box provided by the manufacturer.

DESCRIPTION OF THE TABLE BLENDER AND ITS ACCESSORIES (Fig. A)

A1	Inner lid	O – stopping the appliance operation
A2	Perimeter lid	gears 1–5 (1 – lowest speed, 5 – highest speed)
A3	Lid seal	P – PULSE mode to briefly start the blender at maximum speed
A4	Glass container with handle, max. filling capacity 1.5 l	A10 LED indicates the connection of the A8 motor unit to the power socket.
A5	Blade unit seal	A11 Feet with suction cups
A6	Blade unit with 6 chopping blades	
A7	Screw nuts for fixing the A6 blade unit to the A4 container	
A8	Motor unit	
A9	Speed dial	

THE PURPOSE OF USING THE TABLE BLENDER

- This table blender can be used to prepare smoothies, milkshakes, blending spreads, sauces, soups or baby food, making nut butters, crushing ice, etc.

BEFORE FIRST USE

- Take the appliance and its accessories out of the packaging materials.
- Remove the **A2** perimeter lid from the neck of the container. Remove the **A1** inner lid from the **A2** perimeter lid.
- Turn the **A4** blender container upside down and place it carefully on an even, dry and stable surface. Unscrew the **A7** nut in the clockwise direction and remove the **A6** blade unit from the **A4** container.
- Wash the **A4** blender container, the **A2** perimeter lid, the **A1** inner lid and the **A6** blade unit with warm water using a few drops of hand dishwashing detergent. Then thoroughly rinse everything under running water to remove any dishwashing detergent residue and wipe dry with a kitchen towel.



Caution:

When handling and cleaning the **A6** blade unit, take extra care not to cut yourself on the chopping blades. Do not touch the chopping blades.



Warning:

To avoid the risk of electric shock, do not immerse the **A8** motor unit, power cord or power cord plug in water or any other liquid, or wash these parts under running water.

ATTACHING THE BLADE UNIT TO THE CONTAINER (Fig. B)

- Turn the **A4** blender container upside down and place it carefully on an even, dry and stable surface. Place the **A6** blade unit in the **A4** container so that the blades face inside the **A4** container. Place the **A7** screw nut threaded down on the **A6** blade unit. Turn the **A7** screw nut counter-clockwise to attach the **A6** blade unit to the **A4** blender container. Tighten the **A7** nut with a reasonably large force. Pull the **A7** screw nut upwards to verify that the **A6** blade unit is properly attached to the container. Turn the **A4** blender container upside down.



Caution:

When handling the **A6** blade unit, take extra care not to injure yourself on the chopping blades. Do not touch the chopping blades. Do not use the **A6** blade unit without the **A5** seal or the **A7** screw nut.

FOOD PREPARATION

- Remove the peel from citrus fruits and fruits with inedible or too hard skin, such as pineapple, mango, etc. Remove the central part of the pineapple in addition to the peel.
- Fruit containing hard seeds or pits, such as apricots, peaches, mangoes, etc., should be pitted or seedless. Remove the cores and stems from fruits such as apples, pears, etc. Remove the stems and leaves from the strawberries. Remove the nuts from the shells.
- Cut the food into evenly sized pieces of approximately 2 cm.
- The size of frozen ingredients (ice cubes, banana, strawberries, mangoes, etc.) should also be around 2 cm.
- Ice cubes should be processed immediately after taking them out of the freezer.
- The blender is not intended for blending dried foods such as beans, pepper, coffee beans, dry corn kernels, etc., or other hard foods that cannot be cut with a knife.

USING THE TABLE BLENDER (Fig. C)

- Fill the **A4** blender container with prepared food and liquids. Do not overfill the **A4** container above the 1,500 ml mark, otherwise the **A2** lid could be loosened during operation and the ingredients could be splashed out of the **A4** container. If you are processing ingredients that gain volume during the course of blending (milk, etc.), fill the **A4** container up to a maximum of 1,000 ml. Separate larger amounts of ingredients into several smaller batches and process it gradually.
- Place the **A2** lid on the **A4** blender container. With one hand hold the **A4** container by the handle and with the other hand press the **A2** lid evenly down so that it adheres to the neck of the **A4** container around its entire circumference. Insert the **A1** inner lid into the **A2** perimeter lid and press it down to engage the **A2** perimeter lid.



Caution:

Always use the **A2** perimeter lid with the **A3** seal properly fitted.

- Ensure that the **A8** motor unit is disconnected from the power socket and the **A9** speed dial is set to 0.
- Make sure that the outer surface of the **A4** blender container is clean and dry. Place the assembled and filled container on the **A8** motor unit.



Note:

The safety lock will not allow the blender to start if the **A4** container is not properly fitted to the **A8** motor unit.

- Connect the power cord plug to a power socket. Connection of the **A8** motor unit to the power socket is indicated by the **A10** LED indicator lit.
- Adjust the speed using the **A9** speed dial. Set the speed to put the blender into operation. Start with the lowest speed setting, so that the ingredients are mixed first, and then gradually increase the speed to the desired level. Recommended speed settings and processing times are given in the chapter QUICK GUIDE TO PROCESSING INGREDIENTS.



Caution:

The maximum continuous operation time of the appliance is 15 minutes. Allow the appliance to cool for 5 minutes before using it again. Do not exceed the maximum operating time and observe the cooling time of the appliance.

- During operation, hold the **A2** lid from above with one hand. To add ingredients to the **A4** container, stop the blender and carefully remove the **A1** inner lid. Slowly add the ingredients to the **A4** container through the hole in the **A2** perimeter lid. Do not exceed the 1,500 ml mark

or add hot foods or liquids. Replace the **A1** inner lid and continue blending.

- To briefly start the blender at the highest speed, turn the **A9** speed dial to position P and hold it briefly in this position. After releasing, the **A9** speed dial will automatically return to position O. The pulse level is used to briefly and repeatedly start the blender at the highest speed, e.g. when crushing ice. Always hold the **A9** speed dial in the position P only at short intervals of a few seconds.
- Stop the blender operation by setting the **A9** speed dial to position O.
- After use, unplug the power cord from the power socket. Wait until the rotating parts stop rotating and remove the assembled container from the **A8** motor unit.
- Remove the **A2** lid and carefully empty the contents of the **A4** container.
- After each use, properly clean the parts that have come into contact with food according to the instructions in the chapter CLEANING AND MAINTENANCE.

QUICK GUIDE TO PROCESSING INGREDIENTS

Ingredients dishes drinks	Quantity	Speed selection	Recommended blending time
Smoothies and cocktails*	750 ml	4–5	30–40 s
Children's mixed dishes	250 g	3	15–20 s
Spreads	250 g	2–3	10–15 s
Dressings	250 ml	3–4	15–20 s
Soups and sauces	750 ml	3–4	30–40 s
Peanut butter	250 g	2–3	5x 30 s**
Hard pastry for breadcrumbs	2 rolls (approx. 90 g)	P (Pulse level)	5x 3s
Ice cubes	12 pcs	P (Pulse level)	4–5x 3s

* Use PULSE mode when mixing drinks with frozen fruit or ice cubes.

** Between each 30-second cycle, wipe the walls of the **A4** container with a kitchen spatula. Before cleaning the walls of the **A4** container, set the **A9** speed controller to position O, disconnect the power cord from the power socket and wait for the rotating parts to stop. Remove the container from the **A8** motor unit and only then, after removing the **A2** lid, clean the walls of the **A4** container. After the first cycle, add a tablespoon of peanut oil. Allow the blender to cool down for 5 minutes after the first 3 cycles.



Note:

The above table serves only as a recommendation.

CLEANING AND MAINTENANCE (Fig. D)

- Before any cleaning or maintenance, set the **A9** speed dial to position O (stop operation) and disconnect the power cord from the power socket. After stopping the rotating parts, remove the container from the **A8** motor unit.
- Never use thinners, metal or other dishwashers or abrasive cleaners for cleaning. The finish of the appliance and its accessories could be damaged.



Warning:

To avoid the risk of electric shock, do not immerse the **A8** motor unit, power cord or power cord plug in water or any other liquid, or wash these parts under running water.



Caution:

When handling and cleaning the **A6** blade unit, take extra care not to cut yourself on the chopping blades. Do not touch the chopping blades.

- Clean the appliance immediately after use. Do not store food in the **A4** blender container or allow food remains to dry in it. Dried food remains are more difficult to remove and may make it more difficult to remove the **A6** blade unit from the **A4** container.

- Remove the **A2** perimeter lid and the **A1** inner lid from the container. After emptying the **A4** container, remove the **A6** blade unit.
- Wash the **A4** glass container, the **A2** perimeter lid, the **A1** inner lid and the **A6** blade unit thoroughly with warm water using a few drops of hand dishwashing detergent. Then thoroughly rinse everything under running water to remove any dishwashing detergent residue and wipe dry with a kitchen towel.
- **A1** inner lid, **A2** perimeter lid and **A4** blender container (without **A6** blade unit) are suitable for washing in a dishwasher. Leave the **A1** inner lid and the **A2** perimeter lid to be washed in the dishwasher's upper basket. You can leave the **A4** blender container to be washed in the lower dishwasher basket.
- The **A4** blender container can also be cleaned by putting the blender into operation for 30–40 seconds according to the instructions in the chapter of USING THE TABLE BLENDER with the **A4** container filled with about 0.5 l of clean water with the addition of 1 to 2 drops of hand dishwashing detergent. This will release most of the food remains. After turning off and disconnecting the blender from the power socket, wait for the rotating parts to stop. Take the **A4** container off the **A8** motor unit. Remove the **A2** lid and empty the contents of the **A4** container. Disassemble the container into its individual parts. Rinse the **A4** glass container, the **A2** perimeter lid, the **A1** inner lid and the **A6** blade unit thoroughly under running water to remove any residual dirt and dishwashing detergent and wipe dry with a kitchen towel.



- Check that the **A3** lid seal and the **A5** blade unit seal are clean. Residual dirt can cause the seal not to perform its purpose properly.
- The **A7** screw nut can be washed under clean running water with a hand dishwashing detergent. After washing, wipe the **A7** nut dry.
- Use a slightly damp cloth to remove dirt from the **A8** motor unit. Wipe the cleaned surface of the **A8** motor unit dry with a soft cloth.

STORAGE

- Clean the blender and its accessories according to the instructions in the chapter CLEANING AND MAINTENANCE. Before storing, the blender and its accessories must be clean and dry.
- Store the blender and its accessories in a clean, dry place out of the reach of children and pets.

TROUBLESHOOTING

Problem	Possible Cause	Solution
The blender cannot be turned on. The power cord is connected to the power socket.	The A4 blender container is not properly attached to the A8 motor unit.	Set the A9 speed dial to position 0. Disconnect the power cord from the power socket. Attach the assembled container to the A8 motor unit properly.
There is a faint smell when first used.	This is a normal occurrence.	If the smell persists after several uses, please contact an authorised service centre.
The blender suddenly stopped.	Overheating or overload protection has been activated.	Set the A9 speed dial to position 0. Disconnect the power cord from the power socket. Let the blender cool for 30–60 minutes. Divide a larger batch of ingredients into several smaller batches and blend them in a blender gradually. If the blender fails to start after cooling down, contact an authorised service centre.
The A4 blender container is leaking.	The A4 blender container is cracked.	Stop using the cracked A4 container and replace it with a new container of the original type.
	The A6 blade unit is not properly attached to the A4 blender container.	Empty the contents of the A4 container and properly attach the A6 blade unit to the A4 blender container with the A7 screw nut.
	The A5 sealing ring does not extend around the perimeter to the A6 blade unit or is not fitted at all to the A6 blade unit.	Empty the contents of the A4 container. Unscrew the A7 nut. Remove the A6 blade unit from the A4 blender container. Align the A5 sealing ring so that it adheres to the A6 blade unit along the entire circumference or place it on the A6 blade unit and make sure that it adheres to it along the entire circumference. Attach the A6 blade unit to the A4 blender container with the A7 screw nut and tighten the A7 nut with a reasonably large force.
An unusual sound or an abnormal vibration can be heard during operation.	The A6 blade unit is not properly attached to the A4 blender container.	Set the A9 speed dial to position 0. Disconnect the power cord from the power socket. Wait until the rotating parts stop rotating. Take the assembled container off the A8 motor unit. Empty the contents of the A4 container and tighten the A7 screw nut properly.
	There are too many ingredients in the A4 blender container.	Set the A9 speed dial to position 0. Disconnect the power cord from the power socket. Wait until the rotating parts stop rotating. Take the assembled container off the A8 motor unit. Remove the A2 lid and remove some of the ingredients from the A4 container.
The A6 blade unit is jamming.	There are too many ingredients in the A4 blender container or the ingredients are cut into too large pieces.	Set the A9 speed dial to position 0. Disconnect the power cord from the power socket. Wait until the rotating parts stop rotating. Take the assembled container off the A8 motor unit. Remove the A2 lid and remove part of the ingredients from the A4 container or use ingredients cut into smaller pieces.

TECHNICAL SPECIFICATIONS

Rated voltage range.....	220–240 V
Rated frequency.....	50–60 Hz
Rated input.....	1250 W
Safety class (for electric shock protection).....	II
Noise level.....	85 dB(A)
Blender container capacity.....	1.5 l
Operating cycle.....	1.5 min
Cooling time.....	5 min

The declared noise emission level of the appliance is 85 dB(A), which represents a level A of acoustic power with respect to a reference acoustic power of 1 pW.

Glossary of technical terms

Safety Class for Electric Shock Protection:

Class II – Electric shock protection is provided by double or heavy-duty insulation.

EXPLANATION OF SYMBOLS PLACED ON THE PRODUCT OR IN THE ACCOMPANYING DOCUMENTATION



Read the user's manual.



Product with protection class II



The product meets all the basic requirements of the applicable EU directives.



This symbol on products or original documents means that used electric or electronic products must not be added to ordinary municipal waste.

INSTRUCTIONS AND INFORMATION ON DISPOSAL OF USED PACKAGING MATERIAL

Dispose of used packaging material at the location designated by the municipality for waste disposal.

DISPOSAL OF USED ELECTRICAL AND ELECTRONIC EQUIPMENT

Used electrical and electronic products must not be added to ordinary municipal waste. For proper disposal and recycling of these products, deliver them to designated collection points. Alternatively, in some European Union states or other European countries the products can be returned to the local retailer when buying an equivalent new product. By properly disposing of this product, you help preserve valuable natural resources and contribute to preventing potential negative impacts on the environment and human health resulting from improper waste disposal. For further details, contact your local authorities or the nearest collection point. Fines may be imposed for improper disposal of this type of waste in accordance with national regulations.

For Business Entities in European Union States

To dispose of electric or electronic equipment, request necessary information from your retailer or supplier.

Disposal in Other Countries Outside the European Union

This symbol is valid in the European Union. If you wish to dispose of this product, request the necessary information about the correct disposal method from the local council or from your retailer.

Changes to text and technical parameters are reserved.

FAST ČR, a.s.
U Sanitasu 1621
CZ-251 01 Říčany
www.sencor.eu