

# F110

## 快速入门指南 Quick Start Guide

型号/Model: KA5

## About FiiO

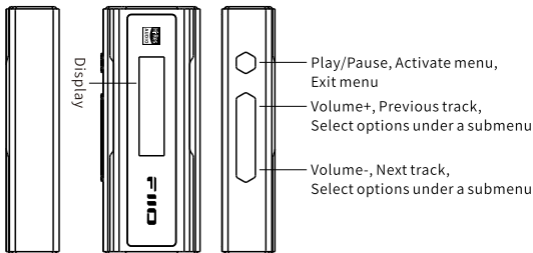
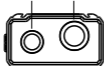
"JadeAudio" is a subsidiary brand of FiiO Electronics Technology Co., Ltd. It is a stylish, technological and youth-oriented brand aiming to provide high-quality yet cost-effective audio products with an excellent listening experience for the younger generation all around the world. The entity's Chinese name is derived from "翡声" (Fei Sheng), meaning "the sound of Jade". The name "JadeAudio" conveys our mission towards providing consumers with a crisp and pleasant listening experience while maintaining audio fidelity.

Guangzhou FiiO Electronics Technology Co., Ltd. is a high-tech enterprise focusing on researching and developing portable music products, with current main products being hi-res music players, portable headphone DAC/Amps and headphones/earphones. Including a core team with nearly 30 years of R&D experience in audio products development, FiiO is specialized in self-research and development, and sells FiiO-branded products through sales agents worldwide. By virtue of high quality products and great customer service, FiiO enjoys a high reputation in the industry and has received countless well-known awards.

FiiO is committed to its brand proposition "Born for Music" and ceaselessly pursues perfection in product design and manufacturing to supply users with the best audio products at the best prices.

## Buttons and Ports Labeled

3.5mm SE headphone out/  
SPDIF output



Display

Play/Pause, Activate menu,  
Exit menu

Volume+, Previous track,  
Select options under a submenu

Volume-, Next track,  
Select options under a submenu



Type-C input

★Note: Please do not plug in both the 3.5mm SE headphones and 4.4mm balanced headphones.

## Button Function Explained

### 1. Multifunction button:

short press once to play/pause music; short press twice to turn on/turn off the display; hold for 2s to activate/exit the settings menu.

### 2. Volume+ button:

A mode: short press once to increase the volume for 1 level; hold for 2s to play the previous track; page up on the settings menu.

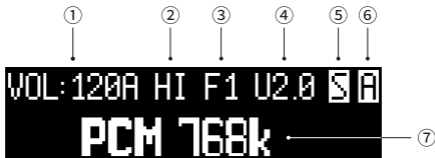
B mode: short press once to play the previous track; hold for 2s to continuously increase the volume; page up on the settings menu.

### 3. Volume- button:

A mode: short press once to decrease the volume for 1 level; hold for 2s to play the next track; page down on the settings menu.

B mode: short press once to play the next track; hold for 2s to continuously decrease the volume; page down on the settings menu.

## An Introduction to Display Information



1. Current volume: display the current volume level.
2. Current gain level: "HI" stands for high gain, "LO" stands for low gain.
3. Current digital filter: F1 to F5 respectively stand for 5 digital filters.
4. Current UAC version: "U2.0" and "U1.0" respectively stand for different UAC versions.
5. SPDIF working state: a displayed "S" character means the SPDIF out is enabled.
6. Current button control mode: A or B.
7. Music format/sampling rate display: display the format and sampling rate of the currently playing song.

## An Introduction to the Settings Menu

1. GAIN: select high or low gain.
2. FLT: digital filter, 5 filter levels are available.
3. VOL-CTL: volume level control, 120 levels for A mode, 60 levels for B mode.
4. DAC-OM: DAC output mode, ClassH and ClassAB modes are available.
5. SPDIF: after the SPDIF mode is enabled, you will get the SPDIF signal through the 3.5mm port with an adapter cable (purchased separately). Please keep this option disabled when using the analog output, such as when outputting to headphones.
6. ADJ-L/R: channel balance settings of the left/right channel.
7. H-DEPOP: display whether the hardware mute switch is on. You can set whether the hardware switch cuts off the output

- when switching songs to improve the POP sound problem that may exist when playing on some devices or Apps.
8. DIMMER: dimmer setting of the display.
  9. ROT-DISP: rotate the display. It can be set to rotate 180 degrees.
  10. OFF-DISP: the display can be auto-locked if there is no activity, and the time control can be chosen from 1 to 60 seconds. "NVR" means Never, i.e. the display will never be auto-locked.
    - ★Note: OLED display continuously on for a long time may lead to brightness differences. So when choosing the "NVR" option, it is suggested to double press the multifunction button to turn off the screen when you don't need to watch it.
  11. HID-KEY: choose the A/B mode of Volume+ and Volume- buttons.
  12. VERSION: firmware version display.
  13. RST-DEF: restore default settings.

## Decoding Function Explained

1. Use a USB Type-C or Lightning cable to connect the KA5 to a mobile phone, tablet PC, or other devices.
  - ★A compatibility issue may occur in certain mobile phones or music players due to system and hardware differences.
  - ★Some mobile phones are required to turn on the OTG function, so as to use the KA5 normally.
2. The KA5 runs driver-free on Windows 10 and above systems, as well as Mac OS. You can install the USB driver on your PC, so it can support the ASIO mode for a better user experience. Please download the USB driver on our official website: <https://www.jadeaudio.com/supports>
  - ★The USB-A to Type-C cable included in the package can be used when connecting through the USB-A port.
  - ★When connecting to a computer, please ensure the "FiiO KA5" is selected as the audio output device.
3. When it is working under the Exclusive USB Audio Access Mode, the volume control may be unavailable on some devices. Please ensure the volume level is appropriate before wearing headphones.
4. When the KA5 is disconnected and turned off, holding the multifunction button while connecting it to a UAC1.0 device, the KA5 will enter UAC1.0 mode.

## Notes and Precautions

1. If the KA5 is charged through the USB of mobile phones or computers, it will consume their power.
2. Since the KA5 features a high-performance DAC/Amp chip, it is normal that heating would occur during use.
3. Please adjust the volume to a suitable level before wearing headphones so as to protect your hearing.
4. Please do not wear headphones when plugging in or unplugging the headphones in case there may be a sudden impulse noise damaging your hearing.
5. Please do not repair or disassemble the product on your own and please keep it away from water.
6. For your safety, please avoid using headphones in dangerous environments.

## To Learn More

To learn more about the product, please visit our website:

[www.fiio.com/supports](http://www.fiio.com/supports)

[www.jadeaudio.com/supports](http://www.jadeaudio.com/supports)

Welcome to Scan the Following QR Code to Visit:



Fiio website



Fiio facebook



JadeAudio website



JadeAudio facebook

## WEEE Directive & Product Disposal



At the end of its serviceable life, this product should not be handed as household or general waste. It should be handed over to the applicable collection point for the recycling of electrical and electronic equipment, or returned to the supplier for disposal.

Hereby, Guangzhou FiiO Electronics Technology Co., Ltd declares that this device is in compliance with Directive 2014/30/EU. The full text of the EU declaration of conformity is available at: [www.fiiio.com/doc](http://www.fiiio.com/doc)



*Jade Audio*

广州飞傲电子科技有限公司

Guangzhou FiiO Electronics Technology Co.,Ltd