

## 1. Download & Connect

1) Download and install the “Memories” app on your smartphone. Search “Memories” in the app store or scan the QR code to download.



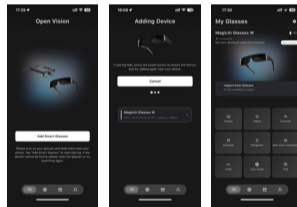
Currently available in the App Store, Google Play, and Official Website for Thailand, Japan, Macau China, Hong Kong China, Philippines, and Malaysia.  
Official Website: <https://whlmemories.com/>  
Service Hotline: 0852-31043175

## 2. Connect the Glasses

1) Power on the glasses: Press and hold the right button for 3 seconds until the startup tone sounds.

2) Open the “Memories” app, search for the device, and connect via the Bluetooth name of the glasses.

3) Successfully entered the interface (as shown below).



Startup

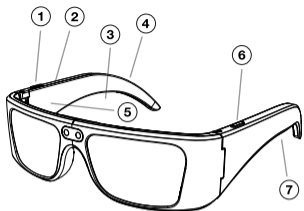
Loading

Finish

## 2. Button Definitions

Button	Action	Description
Left Button	Single Click	Wake AI Voice Assistant (when powered on)
	Single Click	(during AI playback): Interrupt and exit
	Long Press 10s	Hard reset
Right Button	Single Click	Take photo / Stop video / Stop recording / Answer call / Hang up
	Double Click	Start video / Reject call
	Triple Click	Start audio recording
	Long Press 3s	Power On/Off
Right Touch Area -Slider	Single Tap	Play/Pause music
	Double Tap	Next track
	Triple Tap	Previous track
	Swipe forward	Volume +
	Swipe backward	Volume -
Both Buttons (Left + Right)	Long Press 6s	Restore factory settings

No.	Product Button Instructions
1	Right Button
2	Right Touch Area - Slider
3	Right Speaker
4	Charging Port
5	Indicator Light
6	Left Button
7	Right Speaker



## 3. Indicator Light Instructions

Light Color	Flash Pattern	Meaning
Red Light	Flash 2 times	Power off
	Flash 5 times	Low battery
	Continuous flashing	Charging / Factory reset
Blue Light	Flash 2 times	Power on
	Quick flash 3 times	Connecting
	Always on	Fully charged / Firmware upgrade in progress
Fill Light	Flash 1 time	Photo taken
	Flash every 5 seconds	Video recording

## 4. Quick Voice Commands

No.	Scenarios	Voice Commands	
		Mandarin	English
1	Wake Word	Hey Magic	Hey Magic
2	Voice-activated Photo Capture	拍张照片	take a picture
3	Voice-activated Video Recording	打开录像	take a video
4	Voice-activated Audio Recording	打开录音	take a record
5	Voice-activated Call Answering	接听电话	Take the call
6	Voice-activated Call Hanging Up	我正在忙	I'm busy now
7	Volume +	声音大一点	Increase the volume
8	Volume -	声音小一点	reduce the volume

## 5. Basic Functions

- Photo Capture:** Take a photo by single-clicking the right button on the glasses.
- Video Recording:** Start video recording by double-clicking the right button.
- Audio Recording:** Start voice recording by triple-clicking the right button.
- Music Playback:** Supports playing music from the smartphone.

## 6. Highlight Features

- AI Image Recognition:** Wake the AI voice assistant and ask questions about what the glasses have captured. The AI will analyze and provide answers based on the visual content.
- Schedule Reminders:** You can set schedule reminders by waking the AI voice assistant, or through the app.

## 7. Special Features

- Meeting Assistant:** Instantly captures, organizes, and saves speech and text information during meetings or events.
- Simultaneous Interpretation:** Converts the speaker's language into the target language in real time and plays it back.
- One-Click Translation:** Quickly converts text or voice content into different languages, enabling easy communication across language barriers.
- Face-to-Face Translation:** Provides real-time translation for conversations.
- Bluetooth Network Sharing:** After connecting to a shared Bluetooth network, the device can independently access and interact with the AI model.

## 3.Voice Notifications:

- The glasses support voice prompts such as memory alerts, low battery warnings, and other system notifications.
- AI Voice Assistant:** Wake the AI voice assistant by briefly pressing the left button and interact with the AI model through conversation.
  - Smart Navigation:** Supports starting navigation by sending a destination through AI voice commands, or by setting an address in the app.

## Precautions

- Avoid using this product in high-temperature, humid, or strong magnetic environments to prevent performance issues or reduced lifespan.
- This product is a precision electronic device. Do not expose it to impacts, squeezing, or dropping, as such actions may damage internal components and affect normal use. Please store the glasses properly and avoid contact with hard objects.
- Keep the lenses clean. Use a clean, soft cloth to gently wipe them. Avoid using chemical solvents or rough materials to clean the lenses.
- Our company reserves the right to modify the contents of this manual without prior notice. Differences in features between software versions are normal.

## Basic Specifications

Product Type: Fashion Eyewear  
Product Name: MagicAI Glasses W  
Body Material: TR90  
Camera Resolution: 8MP  
Bluetooth: Bluetooth 5.2  
Built-in Storage: 16GB  
Battery Capacity: 265mAh  
Charging: 4PIN Magnetic Connector  
Charging Time: Approximately 4 hours

## Safety Warnings

- Do not charge the glasses in wet or humid environments.
- Ensure that the charging port of the glasses and the charger surface are clean and making full contact.
- When not in use, store the glasses in a dry and ventilated place, away from direct sunlight. Use a glasses case or protective pouch to prevent collisions, squeezing, or scratches and to reduce the risk of damage.
- Use the original charger to charge the glasses. Avoid using inferior chargers to prevent safety issues such as overheating or fire caused by improper charging. Avoid overcharging and over-discharging. Charge the device promptly when the battery level is below 20%, and unplug the charger once fully charged. Periodically perform a full charge and discharge to maintain battery performance.
- Keep the glasses away from strong magnetic fields and high-temperature environments, as they may interfere with the electronic components, affect normal operation, or damage the battery and internal parts. Avoid such environments during use and storage.
- Regularly check and update the software and firmware of the smart glasses to obtain new features, improve performance, and fix vulnerabilities. Ensure sufficient battery level and a stable network during updates to avoid interruptions that may cause device malfunction.



## Magic AI Glasses W – User Manual



This device complies with Part 15 of the FCC Rules. Operation is subject to the following two conditions: (1) this device may not cause harmful interference, and (2) this device must accept any interference received, including interference that may cause undesired operation.

Changes or modifications to this unit not expressly approved by the party responsible for compliance could void the user's authority to operate the equipment.

NOTE: This equipment has been tested and found to comply with the limits for a Class B digital device, pursuant to Part 15 of the FCC Rules. These limits are designed to provide reasonable protection against harmful interference in a residential installation. This equipment generates uses and can radiate radio frequency energy and, if not installed and used in accordance with the instructions, may cause harmful interference to radio communications. However, there is no guarantee that interference will not occur in a particular installation. If this equipment does cause harmful interference to radio or television reception, which can be determined by turning the equipment off and on, the user is encouraged to try to correct the interference by one or more of the following measures:

- Reorient or relocate the receiving antenna.
- Increase the separation between the equipment and receiver.
- Connect the equipment into an outlet on a circuit different from that to which the receiver is connected.
- Consult the dealer or an experienced radio/TV technician for help.

This device and its antenna(s) must not be co-located or operation in conjunction with any other antenna or transmitter.

#### Radiation Exposure Statement

The device has been evaluated to meet general RF exposure requirement in portable exposure condition without restriction.

