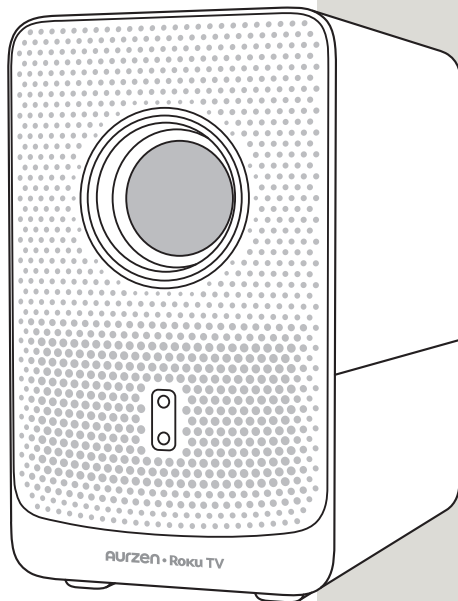


AURZEN • Roku TV

Dolby Audio



EAZZE D1R Cube USER MANUAL

CONTENTS

TROUBLESHOOTING GUIDE	01
WHAT'S IN THE BOX	03
PRODUCT OVERVIEW	03
QUICK START	05
PROJECTOR CONNECTION AND INPUT SOURCE	11
WIFI CONNECTION	13
SCREEN MIRRORING	13
BLUETOOTH CONNECTION	16
SETTINGS	18
PROJECTION DISTANCE AND SIZE	20
CONTROL BY ROKU MOBILE APP	21
SPECIFICATIONS	23

TROUBLESHOOTING

1. Connecting Bluetooth devices

- * Go to **Home > Settings > Remotes & devices** and follow the on-screen instructions to pair your device.

2. How do I improve the image clarity?

Auto Focus: You can move the projector or trigger auto focus by going to **Home > Settings > Projector settings** and selecting **Start auto-focus**.

Manual Focus: Go to **Home > Settings > Projector settings > Image correction > Manual focus** and follow the on-screen instructions to sharpen the image until it becomes clear.

3. What should I do if the image is not rectangular?

Auto Keystone Correction: Go to **Home > Settings > Projector Settings** and select **Start auto-keystone**. The projector will automatically correct keystone distortion.

Manual Keystone Correction: Go to **Home > Settings > Projector settings > Image correction > Manual keystone** and follow the on-screen instructions to adjust the image using four-point correction.

4. Roku TV Remote not working

- * Power your remote by inserting 2 AAA batteries (not included) carefully matching (+) and (-) indicated inside the battery compartment.
- * Always replace dead batteries with two new batteries from the same manufacturer and of the same kind. Never use damaged batteries. If your remote gets warm/hot during use, discontinue use and contact customer support immediately.

5. Upside-down image

- * Go to **Home > Settings > Projector settings > Orientation** to choose your preferred projection mode.

6. How to avoid audio lag when using Bluetooth?

- * To get rid of the lag, we suggest you mirror your device to the projector via a wired connection. Additionally, please move your BT device closer to the projector in order to minimize interference in the environment.

7. The image is blurry on the edges.

- * Please put the projector perpendicularly to the wall about 5.41 ft (no angle tilt), then the auto focus and auto keystone correction function will make 95% area clear.

Note: For LCD projectors, it's normal that 10% of the edges are not as clear as the center.

8. What should I do if the projector fails to power on or automatically shuts down?

- * Please check and ensure that the power cable is securely plugged into the power port to prevent any accidental disconnection or loosening when moving the projector.

9. How to install new apps on my projector?

- * Go to **Home > Streaming Store**, find and add your desired app, and it will appear on the home screen.

10. The content from Hulu and Disney+ can't be mirrored when connected with smartphones./Why is there audio but no video when streaming videos from my mobile phone to the projector via screen mirroring?

- * Copyrighted content from Hulu, Disney+, or other similar streaming services CANNOT be wirelessly mirrored or cast due to copyright restrictions. These apps are available for download in the Roku Channel store.

11. Factory reset

- * Go to **Home > Settings > System > Advanced system settings > Factory reset > Factory reset everything** to restore the projector to its original settings.

12. Other

- * Send an email to our customer service team for assistance. To see complete Roku TV User Manual - please visit <https://go.roku.com/tvmanual>.

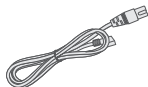
WHAT'S IN THE BOX



Aurzen Roku TV
Smart Projector



Remote Control
(Batteries not included)



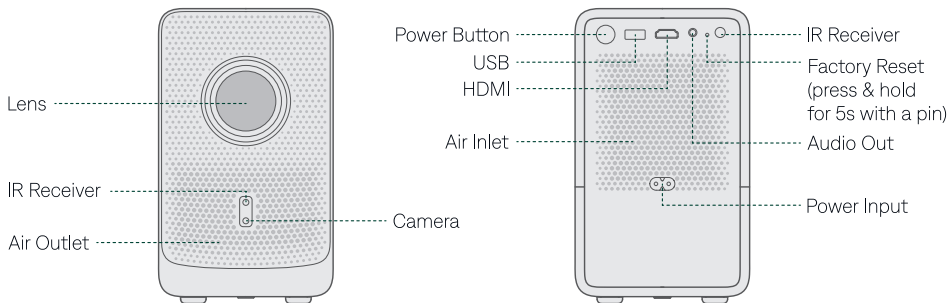
Power Cable

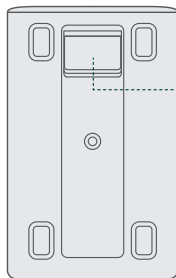
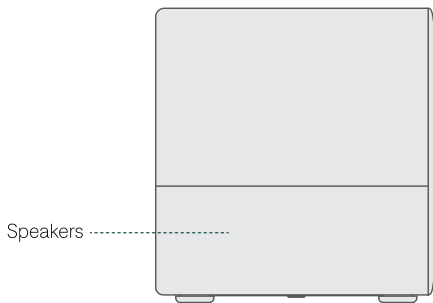


Quick Start Guide

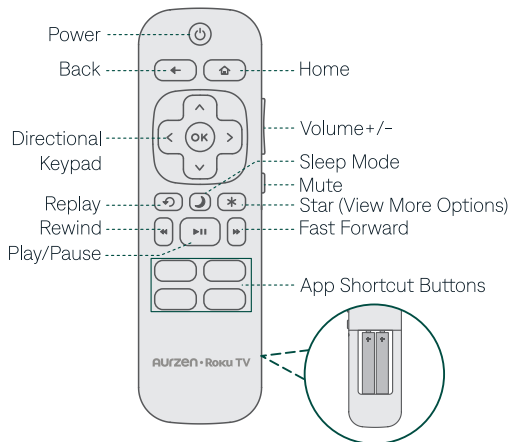
PROJECTOR OVERVIEW

Projector





Remote Control

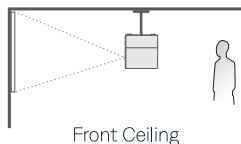
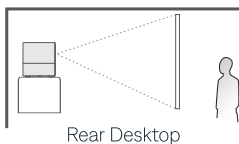
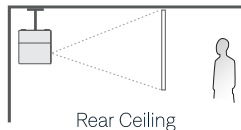
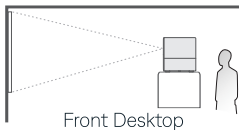


Tips:

1. Power your remote by inserting 2 AAA batteries (not included) carefully matching (+) and (-) indicated inside the battery compartment.
2. Always replace dead batteries with two new batteries from the same manufacturer and of the same kind. Never use damaged batteries. If your remote gets warm/hot during use, discontinue use and contact customer support immediately.

QUICK START

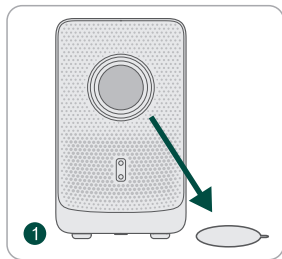
1. Projector Installation



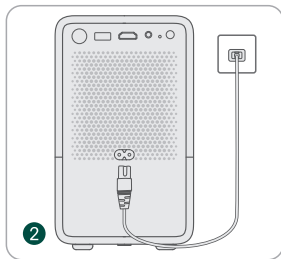
Tips:

- * Select the appropriate projection orientation during the guided setup process or via **Home > Settings > Projector settings > Orientation**.
- * Mounting Screw: 1/4" (not included).

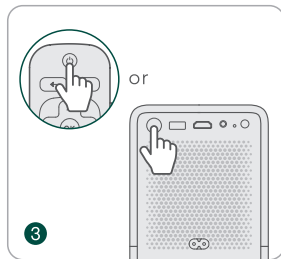
2. Powering On



Remove the protective film from the lens.



Plug the power cable into an outlet.

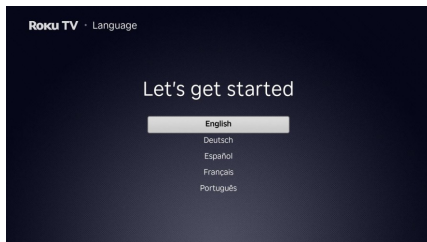


Press the **Power Button** to turn the projector on.

3. Setup Wizard

Follow on-screen setup instructions to activate your projector.

- Choose your language, location, and projection orientation.
- Connect to WiFi.



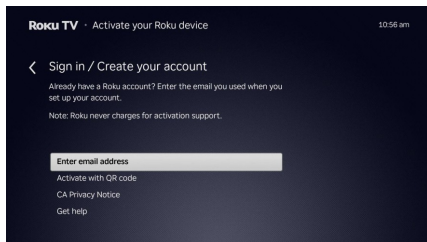
4. Activation

Activate your projector using one of the following methods:

Using email: Enter your email address when prompted.

Then check your inbox for an activation email and follow the instructions to complete activation.

Using QR code: Scan the on-screen QR code to go to the indicated link and follow the instructions to complete activation.

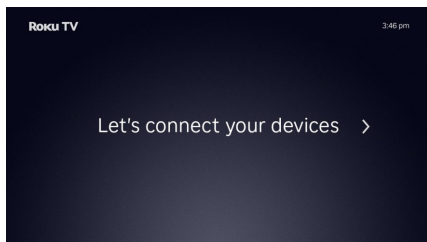


Tips:

- * A Roku account and internet connection are required for activation.
- * Roku never charges for activation.
- * You can rename the projector during the activation process.

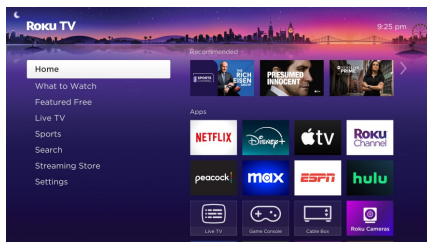
5. Device Connection

Follow the on-screen instructions to connect and set up external devices, such as a cable box, Blu-ray™ player, or game console. To skip this step, select **Do this later** when prompted.



6. Home Screen Setup

After completing the setup, the home screen will appear. Use the directional pad on the remote control to navigate between sections.



Note:

Resolution is based on Projector compatibility and varies by channel and content. Channels are subject to change, vary by region, and may require payment.

Tips:

- * Change the screen theme by going to **Settings > Theme**.
- * Hide or show items and options by going to **Settings > Home Screen**.

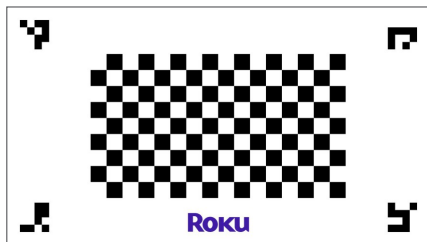
- * Find and add streaming apps from the **Streaming Store**. Newly added apps will appear on the home screen.
- * Arrange items (moving, removing, and more) by highlighting an item and pressing the **Star*** button on the remote control.

7. Image Adjustment

Focus

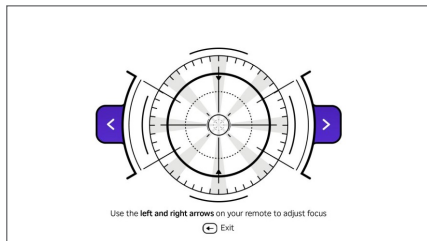
1. Auto Focus

The projector automatically adjusts image clarity when it detects shaking or rapid movement. You can also trigger Auto Focus by going to **Home > Settings > Projector settings** and selecting **Start auto-focus**.



2. Electric/Manual Focus

For manual adjustment, go to **Home > Settings > Projector settings > Image correction > Manual focus** and follow the on-screen instructions to sharpen the image until it becomes clear.

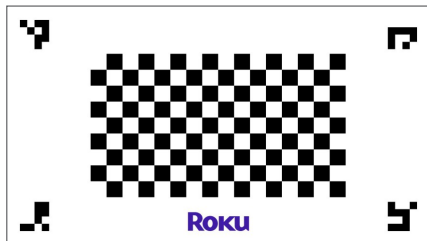


Keystone Correction

1. Auto Keystone Correction

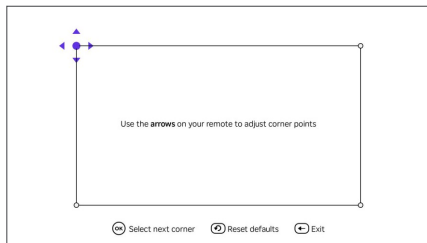
To activate the auto keystone feature, go to **Home > Settings > Projector Settings** and select **Start auto-keystone**. The projector will automatically correct keystone distortion.

Note: The automatic correction range is $\pm 15^\circ$ vertically and horizontally; beyond this range, manual adjustment is required.



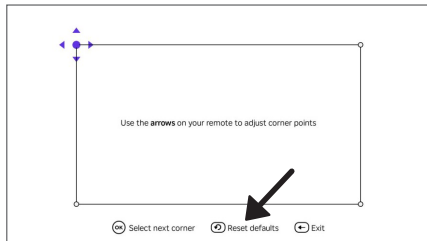
2. Manual Keystone Correction

For manual adjustment, go to **Home > Settings > Projector settings > Image correction > Manual keystone** and follow the on-screen instructions to adjust the image using four-point correction.

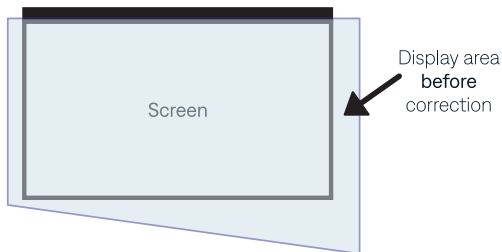


3. How to Fit into the Screen

Step 1: Press **Reset defaults** in the manual keystone menu.



Step 2: Adjust the position of the projector, and make sure the displayed area larger than the screen.



Step 3: Adjust the display area by using manual keystone and fit into the screen.

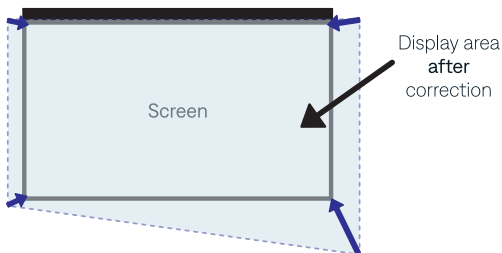
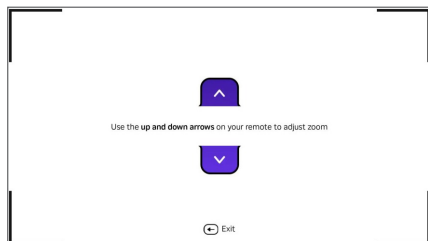


Image Scaling

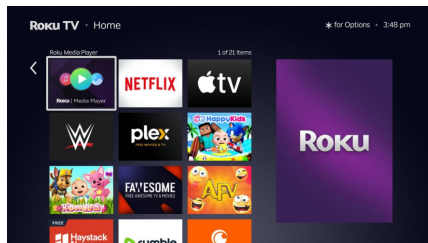
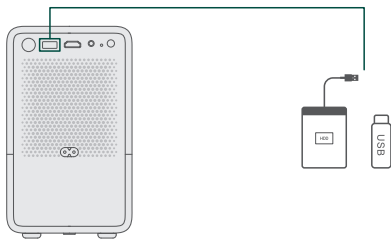
Adjust the image size by going to **Home > Settings > Projector settings > Image correction > Zoom**.



PROJECTOR CONNECTION AND INPUT SOURCE

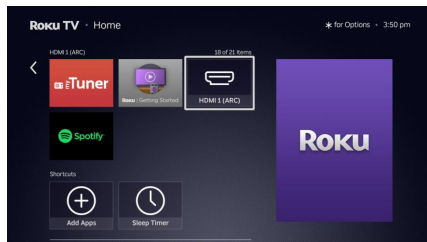
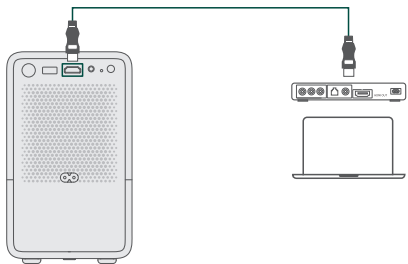
1. USB Connection

To play files from a USB media device, insert the disk into the projector's USB port. Follow the instructions when prompted to launch the **Roku Media Player** to locate and play your file. Or find and launch **Roku Media Player** on the Home screen.



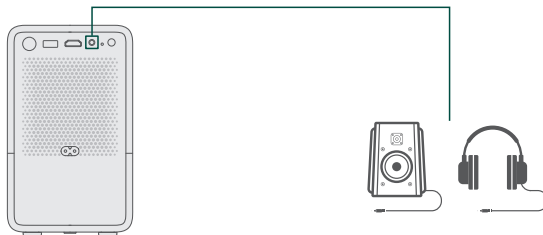
2. HDMI Connection

Use an HDMI cable (not provided) to connect a device with an HDMI output port to the projector's HDMI port. Then go to **Home > Settings > Picture settings** and select **HDMI 1 (ARC)**. Or find and select **HDMI 1 (ARC)** on the **Home** screen under **Apps & Inputs**.



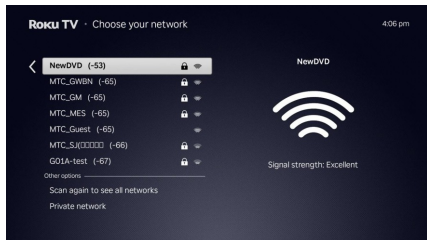
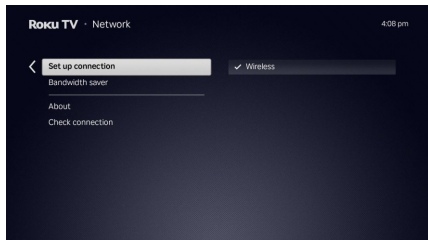
3. Wired Speaker and Headphones Connection

No input source selection is required.



WIFI CONNECTION

You can connect your projector to a WiFi network by going to **Home > Settings > Network > Set up connection > Wireless**. Only 2.4GHz or 5GHz bands are supported.



SCREEN MIRRORING

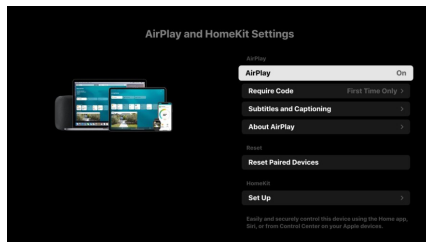
Important Note:

Copyrighted content from Hulu, Disney+, and similar streaming services CANNOT be wirelessly mirrored or cast due to copyright restrictions. These apps are available for download in the Roku Channel store.

For iOS Devices

Tip:

Ensure **AirPlay** is turned on by going to **Home > Settings > Apple Airplay and HomeKit**.

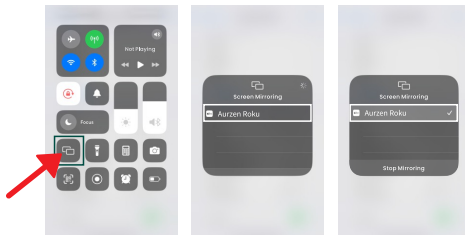


Step 1:

Connect the projector and your iOS device to the same WiFi network.

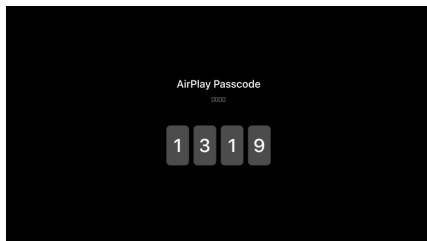
Step 2:

Open the **Control Center** on your iOS device and tap **Screen Mirroring** to search for the projector.



Step 3:

Choose **Aurzen Roku** (or the projector name if you have renamed it) from the list. For the first time, you'll need to enter the projector's on-screen passcode into your phone. Once connected, your iOS device's screen will be mirrored onto the projection screen or wall.



For Android Devices

Tips:

- * Ensure the screen mirroring mode is **not** set to **Never allow** by going to **Home > Settings > System > Screen Mirroring**.
- * Ensure your Android device supports **Multi-screen, Smart View, or Wireless Display** (names may vary by device).

Step 1:

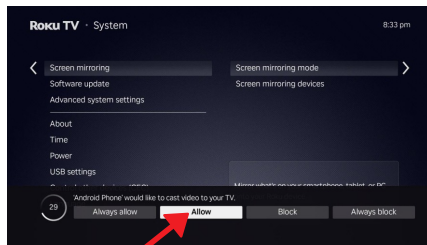
Turn on WiFi on your Android device (a successful WiFi connection is not required).

Step 2:

Activate the **Multi-screen/Smart View/Wireless Display** function on your Android device and search for the projector.

Step 3:

Choose **Aurzen Roku** (or the projector name if you have renamed it) from the list and confirm casting when prompted. Once connected, your Android device's screen will be mirrored onto the projection screen or wall.



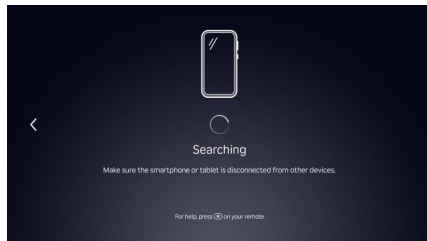
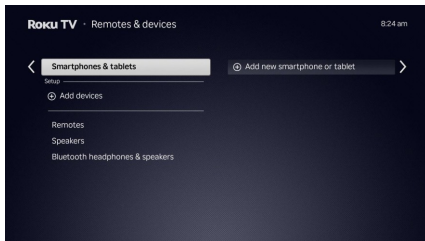
BLUETOOTH CONNECTION

1. Use as a Bluetooth Speaker

Turn your projector into a Bluetooth speaker by connecting it to your mobile device.

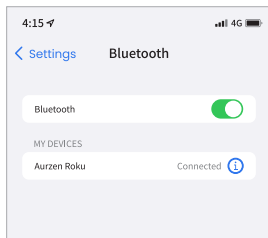
Step 1:

Go to **Home > Settings > Remotes & devices > Smartphones & tablets** and select **Add new smartphone or tablet**. Or, find and select **Bluetooth** on the **Home** screen under **Apps & Inputs**.



Step 2:

Access your mobile device's Bluetooth settings and activate Bluetooth. Search for **Aurzen Roku** (or the projector name if you have renamed it) in the available devices list and pair your mobile device with the projector.

**2. Connect to a Bluetooth Speaker or Headphones**

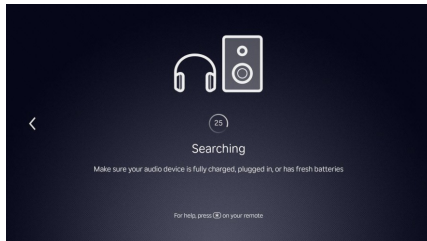
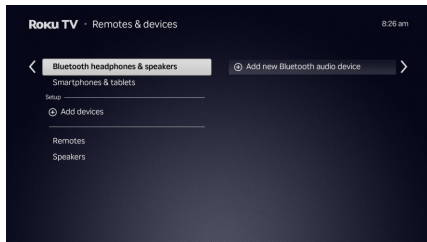
You can connect the projector to a wireless Bluetooth speaker or headphones.

Step 1:

Turn on your Bluetooth device and make it ready for a Bluetooth connection.

Step 2:

Go to **Home > Settings > Remotes & devices > Bluetooth headphones & speakers** and select **Add new Bluetooth audio device**. Search for available devices, then select and pair your device with the projector.



SETTINGS

Network

1. View info on the connected network.
2. Check the network connection status.
3. Set up a WiFi connection.
4. Enable/disable the bandwidth saver.

Remotes & devices

Connect the projector to external remotes, speakers, wireless headphones, smartphones, and tablets.

Theme

Personalize the projector's theme, including wallpaper, screensaver, sound and more.

Accessibility

Customize caption and screen reader settings.

Projector settings

1. Activate auto-focus & auto-keystone.
2. Adjust the focus manually.
3. Correct the keystone distortion manually.
4. Modify the image size.
5. Enable **auto-keystone & auto-focus** or **auto-focus only** upon movement.
6. Select the projection orientation for accurate image projection.

Picture settings

1. View input.
2. Customize picture settings such as brightness, contrast, sharpness, color, tint, and more.

Inputs

Rename and move input icons.

Audio

Set audio output, menu volume, preferred audio language, streaming format, and digital output format.

Guest Mode

Configure the guest mode to secure your account and personal data.

Home screen

Customize the home screen layout and settings.

Payment method

Add a payment method for subscriptions and purchases.

Apple AirPlay and HomeKit

Set up Apple AirPlay and HomeKit for seamless integration with Apple devices.

Privacy

Manage advertising preferences, voice interaction, and Smart TV experience settings.

Help

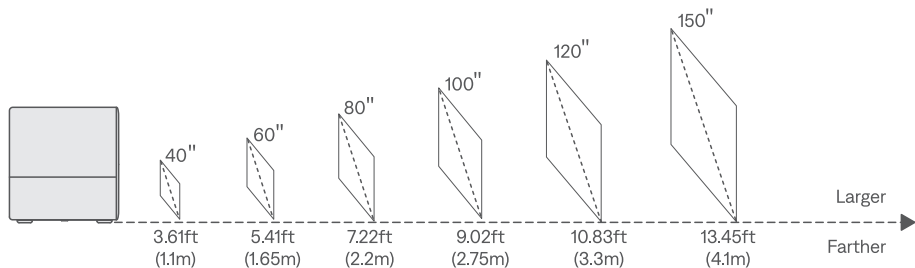
Access tutorial videos for tips and guidance.

System

1. View system info.
2. Set a ZIP code.
3. Configure sleep timer, time zone, and clock format.

4. Customize power settings, including power-on display, auto power savings, standby LED status, Fast TV start, and restart.
5. Set the auto-launch feature and launch app for USB media devices.
6. Search for and control CEC devices.
7. Choose device language.
8. Set screen mirroring mode and device control.
9. Update the software as needed.
10. Restore the projector to the factory settings.
11. Reset network connection.
12. Enable/disable device connections.
13. Choose mobile app control level.

PROJECTION DISTANCE AND SIZE



* For optimal image quality, we recommend a projection size of 60". Position the projector 5.41ft (1.65m) away from the wall or screen.

* The recommended projection distance varies with different projection content. Adjust the distance between the wall/screen and the projector as needed.

* Ambient darkness will improve the clarity of the projected images and may also improve auto focus and auto keystone functions.

CONTROL BY ROKU MOBILE APP

In addition to the remote control, you can use the Roku mobile app to control your projector.

Step 1:

Connect both your mobile device and projector to the same wireless network.

Step 2:

Download the Roku mobile app from App Store or the Google Play Store.



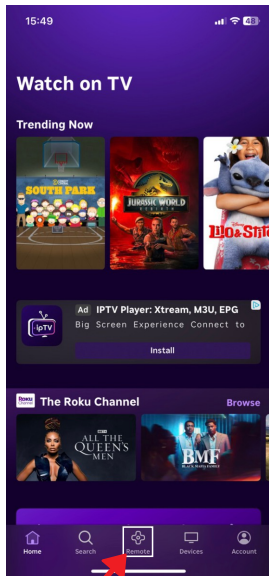
The Roku App (Official)
on the App Store (apple.com) for iOS.



The Roku App (Official) -
Apps on Google Play for Android OS.

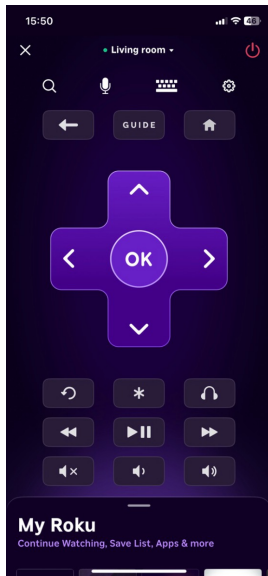
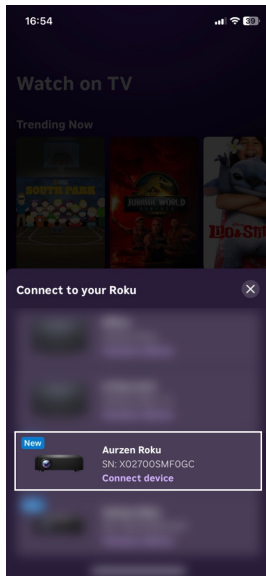
Step 3:

Launch the app and tap the Remote tab.



Step 4:

Choose **Aurzen Roku** (or the projector name if you have renamed it) from the device list to connect. Then the remote interface will appear.




SPECIFICATION

Display Technology	LCD
Light Source	LED
Optical Engine	Sealed
Input Signals	720i/720P/1080i/1080P
Aspect Ratio	4:3/16:9
Installation Type	Front/Rear/Ceiling
Power Supply	100-240V AC, 50/60Hz
Dimensions	7 x 7.4 x 7.8 inches (177.8 x 188.5 x 199mm)
Net Weight	4 lbs (1.83 kg)
Photo Format Supported	PNG/GIF/JPEG
Audio Format Supported	AC3/AAC/MP2/MP3/PCM/FLAC/OGG/AIFF
Video Format Supported	AV1/MKV(VP9)/MOV/MPEG1/MPEG2/MPEG4/H.264/XVID
Ports	HDMI x 1 / USB x 1 / Audio Out x 1
Mounting Screw	1/4"(not included)

CONTACT US

 **Email** | support@aurzen.com

 **Phone** | +1-667-218-4830 (Mon-Fri, 9:00 to 17:00 EST)

*If you need assistance outside these hours, please email us for assistance.