

V-TAC

Meaningful Innovation.

INSTRUCTION MANUAL LED GARDEN LIGHT

TECHNICAL DATA

MODEL	VT-84042
SKU	24286
POWER	3W
INPUT VOLTAGE	DC24V
USEFUL LUMENS	300 Lm (@SPHERE 360°)
BEAM ANGLE	360°
LIFE SPAN	20,000 Hours
ON/OFF CYCLE	>15,000 Time
UNIT COLOUR	Black
LED COLOUR	Warm White (3000K)
CRI	>80
IK RATING	IK07
DIMENSION	W 228 X H 1170 mm



02 YEAR
WARRANTY*
IP65
RATING

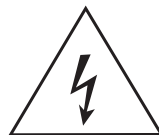
*This product contains a light source of energy efficiency class<F>, where <F> shall be replaced by the energy class of the contained light source.

INTRODUCTION & WARRANTY

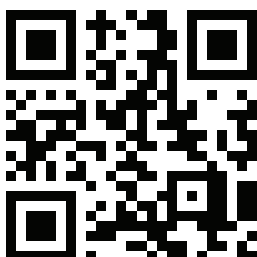
Thank you for selecting and buying V-TAC product. V-TAC will serve you the best. Please read these instructions carefully before starting the installation and keep this manual handy for future reference. If you have any another query, please contact our dealer or local vendor from whom you have purchased the product. They are trained and ready to serve you at the best. The warranty is valid for 2 years from the date of purchase. The warranty does not apply to damage caused by incorrect installation or abnormal wear and tear. The company gives no warranty against damage to any surface due to incorrect removal and installation of the product. The products are suitable for 10-12 Hours Daily operation. Usage of product for 24 Hours a day would void the warranty. This product is warranted for manufacturing defects only.



This marking indicates that this product should not be disposed of with other household wastes.



Caution, risk of electric shock.



MULTI-LANGUAGE MANUAL QR CODE

Please scan the QR code to access the manual in multiple languages.



FR

Cet appareil, ses accessoires et cordons se recyclent

À DÉPOSER EN MAGASIN



À DÉPOSER EN DÉCHÈTERIE



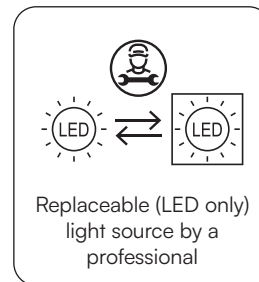
OU

Points de collecte sur www.quefairedemesdechets.fr
Privilégiez la réparation ou le don de votre appareil !

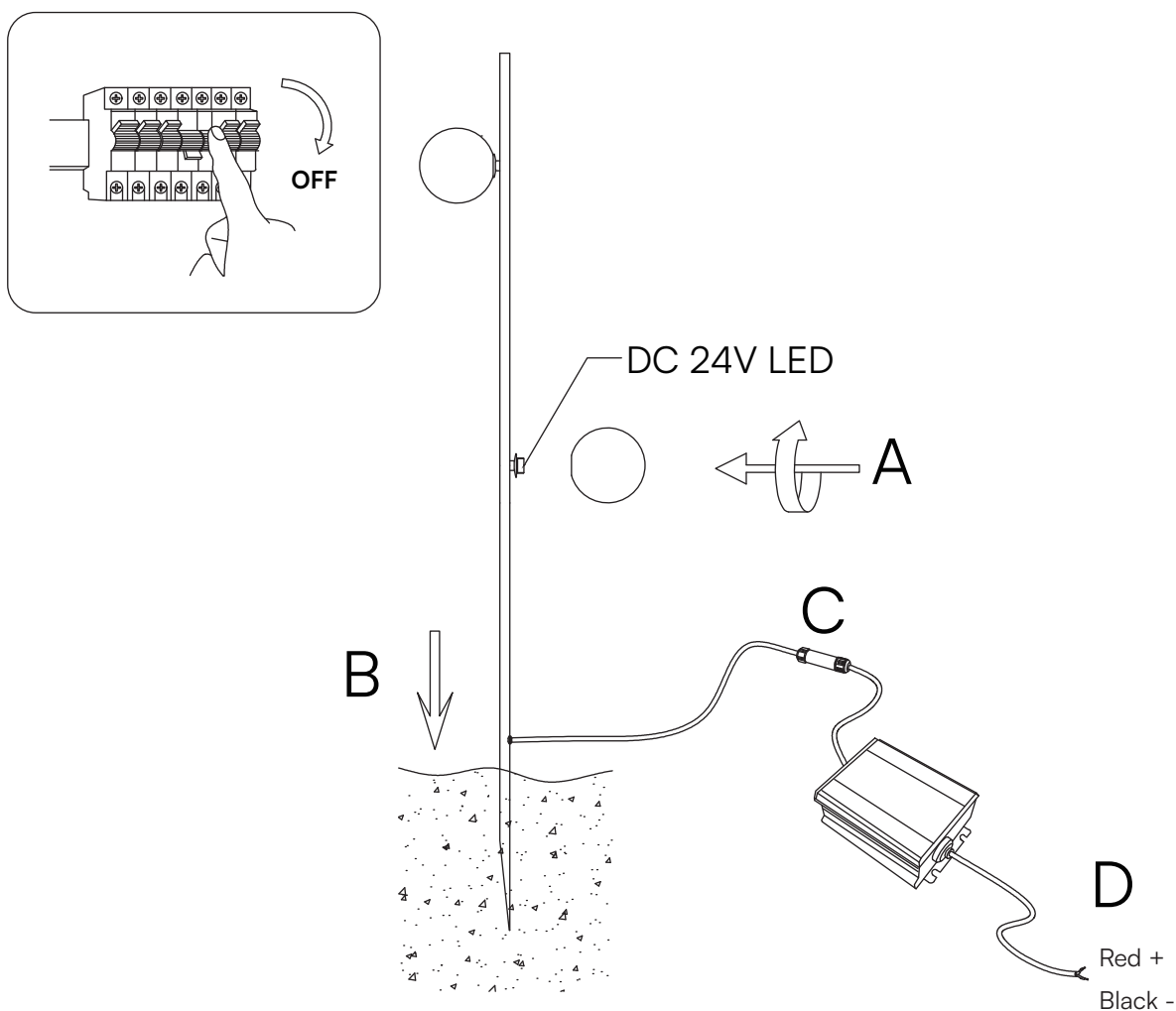
IN CASE OF ANY QUERY/ISSUE WITH THE PRODUCT, PLEASE REACH OUT TO US AT: SUPPORT@V-TAC.EU
FOR MORE PRODUCTS RANGE, INQUIRY PLEASE CONTACT OUR DISTRIBUTOR OR NEAREST DEALERS.
V-TAC EUROPE LTD. BULGARIA, PLOVDIV 4000, BUL.L.KARAVELOW 9B

WARNING

- Please make sure to turn off the power before starting the installation.
- Installation must be performed by a qualified electrician.
- The light source of this luminaire is not replaceable; when the light source reaches its end of life the whole luminaire shall be replaced.
- Proper grounding should be ensured throughout the installation.
- Terminal block not included.
- Must be connected to waterproof terminal box.



INSTALLATION DIAGRAM



WIRING DIAGRAM

— + — DC V + Red
— - — DC V - Black

RoHS



UK
CA



22
PAP

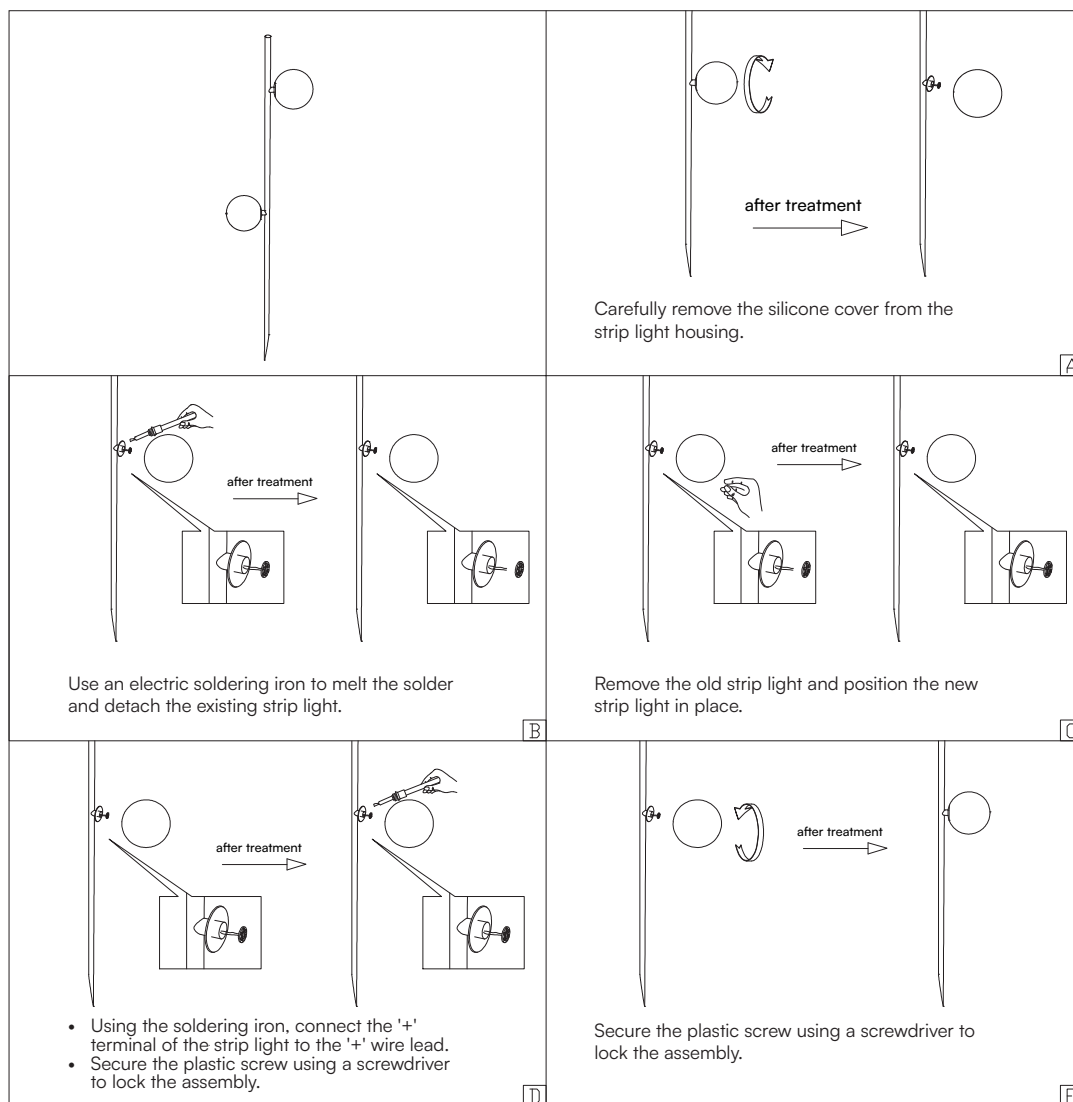
INSTALLATION INSTRUCTIONS

1. Switch off the power supply before starting the installation.
2. Connect the red wire to the DC V+ (positive) terminal of the driver.
3. Connect the black wire to the DC V- (negative) terminal of the driver.
4. Ensure no bare wire is exposed outside the terminal connections.
5. Confirm that all connections are secure and properly insulated.
6. Turn on the power once installation is complete.

This driver operates on DC 24V; polarity must be observed connect positive (+) and negative (-) correctly.

DISMANTLING INSTRUCTIONS

(For Market surveillance team only)



Note: Light source removal will void the warranty

V-TAC WEST EUROPE LTD. IN CASE OF ANY QUERY/ISSUE WITH THE PRODUCT, PLEASE REACH OUT TO US AT:
SUPPORT@V-TAC.EU FOR MORE PRODUCTS RANGE, INQUIRY PLEASE CONTACT OUR DISTRIBUTOR OR NEAREST DEALERS.
V-TAC WEST EUROPE LTD. GROUND FLOOR, 71 LOWER BAGGOT STREET, DUBLIN O2, IRELAND DO2 P593

V-TAC UK LTD. IN CASE OF ANY QUERY/ISSUE WITH THE PRODUCT PLEASE REACH OUT TO US AT
SUPPORT@VTACEXPORTS.COM V-TAC, 5A TUNGSTEN PARK, DOWNS ROAD, WITNEY, OXFORDSHIRE, OX29 OAX