



RSC904 / RSC904T / RSC906 / RSC906T / RSC908 / RSC908T  
**4A/6A/8A SMART  
BATTERY CHARGER AND MAINTAINER**

For all battery types, including lithium



  
**6V/12V**  
Voltage

  
Clamps

  
O-Ring  
connectors

  
IP65  
Weatherproof

  
Car

  
Motorcycle

**INNOVATION  
ON THE MOVE**

RSC904 / RSC904T / RSC906 / RSC906T / RSC908 / RSC908T

# 4A/6A/8A SMART BATTERY CHARGER AND MAINTAINER

For all battery types, including lithium

## Warnings

DANGER! BE AWARE, LEAD-ACID BATTERIES GENERATE EXPLOSIVE GASES DURING NORMAL BATTERY OPERATION. FOR THIS REASON, IT IS VERY IMPORTANT TO READ AND FOLLOW THESE INSTRUCTIONS CAREFULLY, EACH TIME YOU USE THE CHARGING EQUIPMENT.

WARNING! Modern vehicles contain extensive electronic systems. You are required to check with the vehicle manufacturer, for any specific instructions regarding the use of this type of equipment on each vehicle.

Charge in a well-ventilated area.

DO NOT operate near flammable liquids or gases.

DO NOT touch the clamps together or allow to touch the chassis.

DO NOT connect the clamps via another metallic object.

DO NOT cross connect power leads from charger to battery.

Ensure positive (+/RED) is connected to positive and negative (-/BLACK) is connected to negative.

DO NOT pull the cables or clamps from the battery terminals.

DO NOT pull or carry the charger by the power cable.

DO NOT pull the plug from the socket by the cable.

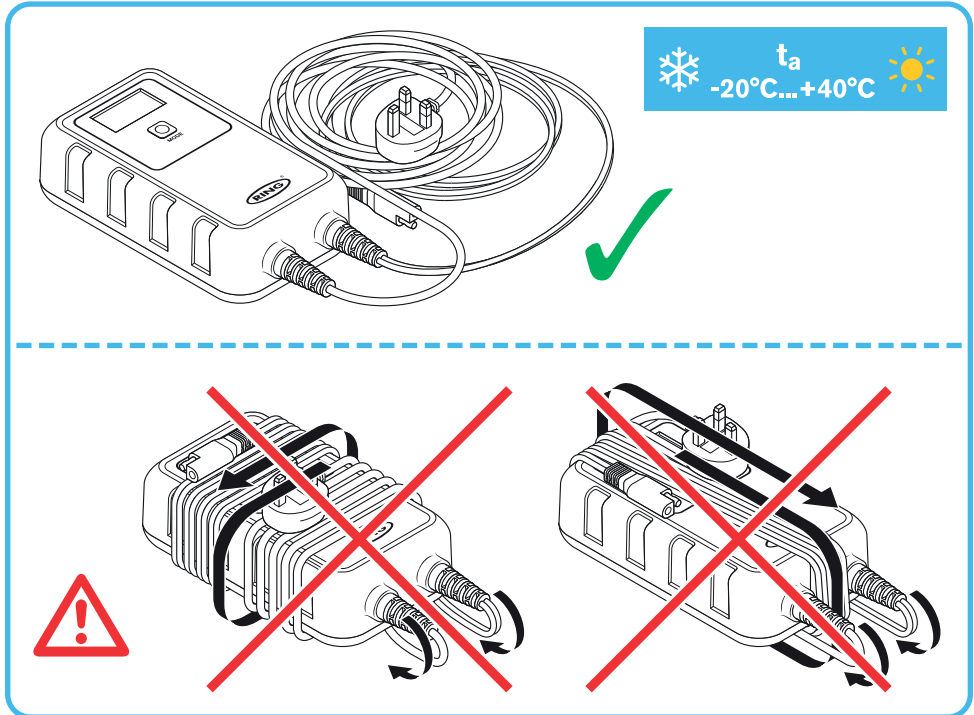
DO NOT use worn or damaged cables, plugs or clamps.

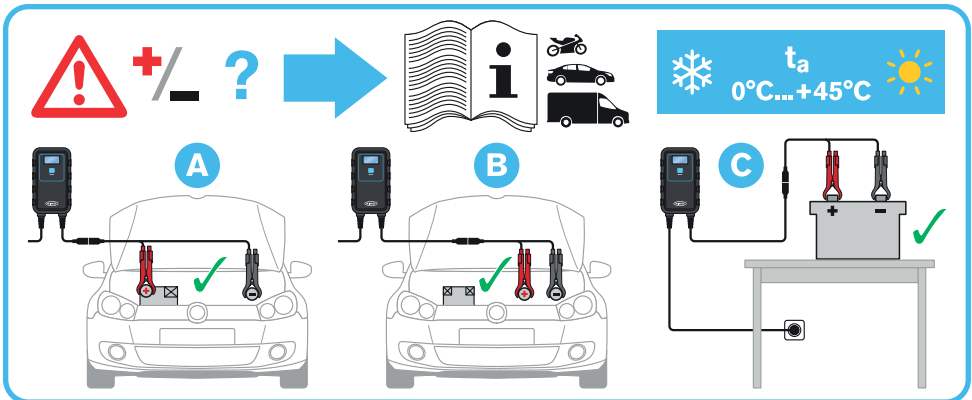
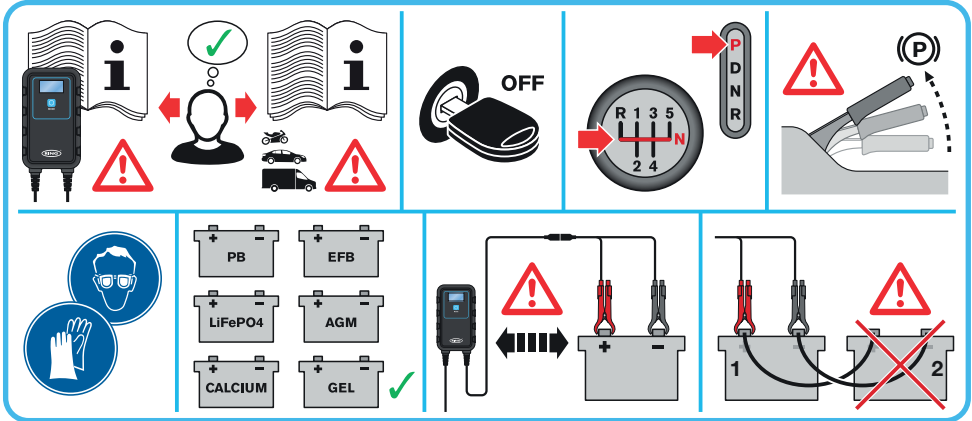
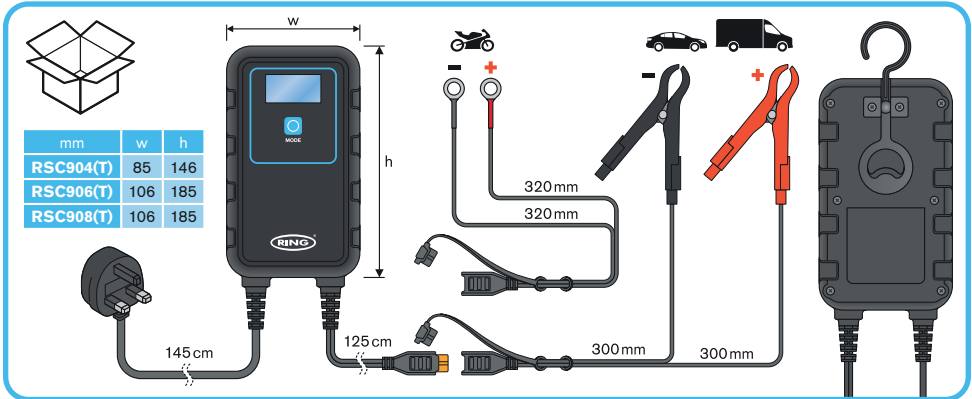
Any faulty item should be immediately repaired or replaced by a qualified technician.

DO NOT use the charger for a task for which it is not designed.

DO NOT cover or obstruct the charger ventilation louvres or fan.

DO NOT at the same time charge batteries of different capacities or discharge levels.

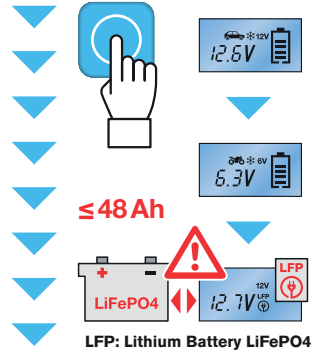




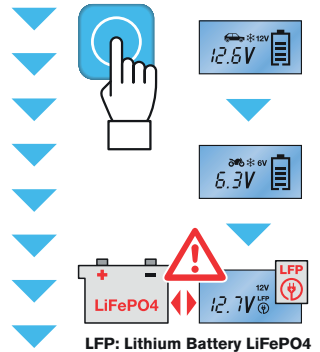


**6a: 4 A**
**RSC904(T)**

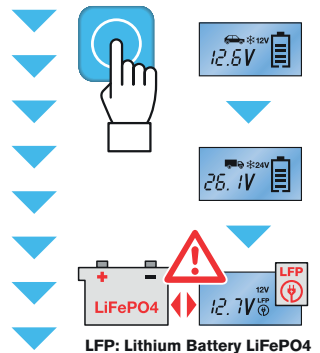

12 V	≤ 14.6 V	≤ 4 A
12 V  ❄️	≤ 14.8 V	≤ 4 A
12 V LFP	≤ 14.4 V	≤ 4 A
6 V	≤ 7.2 V	≤ 2 A
6 V  ❄️	≤ 7.4 V	≤ 2 A
6 V LFP	≤ 7.2 V	≤ 2 A
12 V	≤ 14.6 V	≤ 2 A
12 V  ❄️	≤ 14.8 V	≤ 2 A


**6b: 6 A**
**RSC906(T)**


12 V	≤ 14.6 V	≤ 6 A
12 V  ❄️	≤ 14.8 V	≤ 6 A
12 V LFP	≤ 14.4 V	≤ 6 A
6 V	≤ 7.2 V	≤ 3 A
6 V  ❄️	≤ 7.4 V	≤ 3 A
6 V LFP	≤ 7.2 V	≤ 3 A
12 V	≤ 14.6 V	≤ 3 A
12 V  ❄️	≤ 14.8 V	≤ 3 A


**6c: 8 A**
**RSC908(T)**

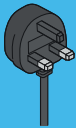


12 V	≤ 14.6 V	≤ 4 A
12 V  ❄️	≤ 14.8 V	≤ 4 A
12 V	≤ 14.6 V	≤ 8 A
12 V  ❄️	≤ 14.8 V	≤ 8 A
12 V LFP	≤ 14.4 V	≤ 8 A
24 V	≤ 28.8 V	≤ 4 A
24 V  ❄️	≤ 29.0 V	≤ 4 A
24 V LFP	≤ 28.8 V	≤ 4 A

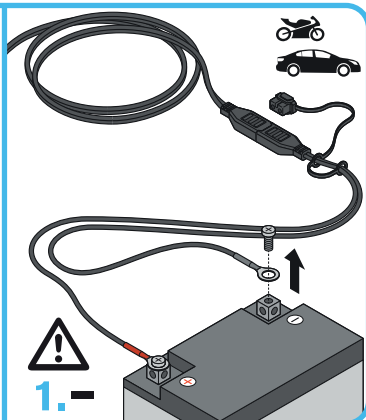
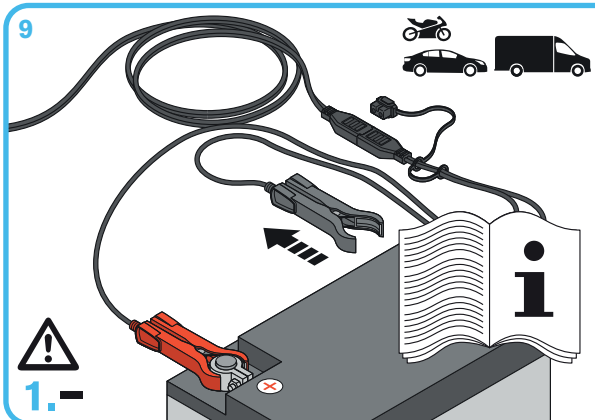
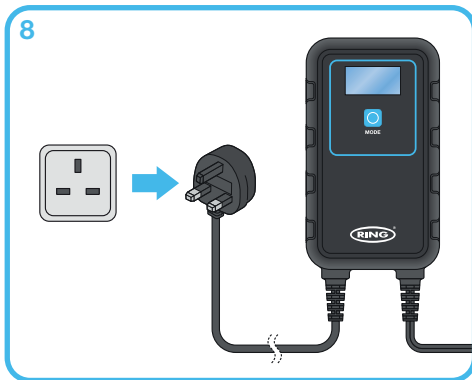
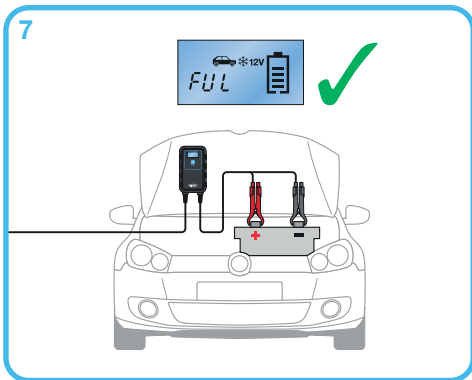


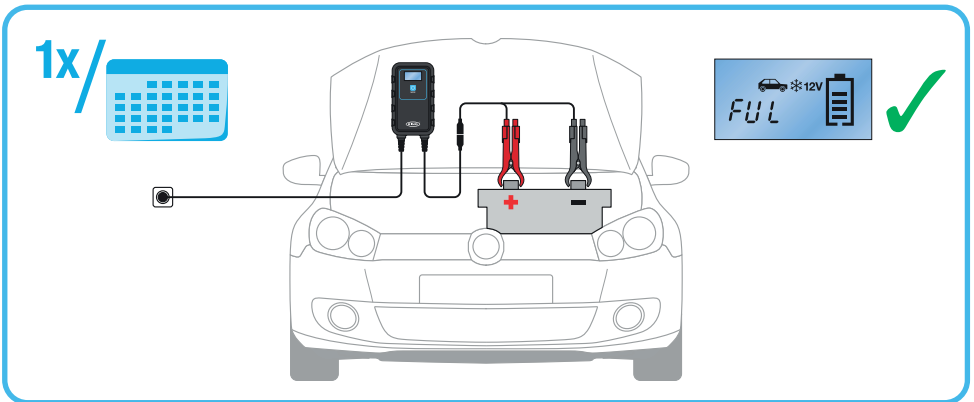
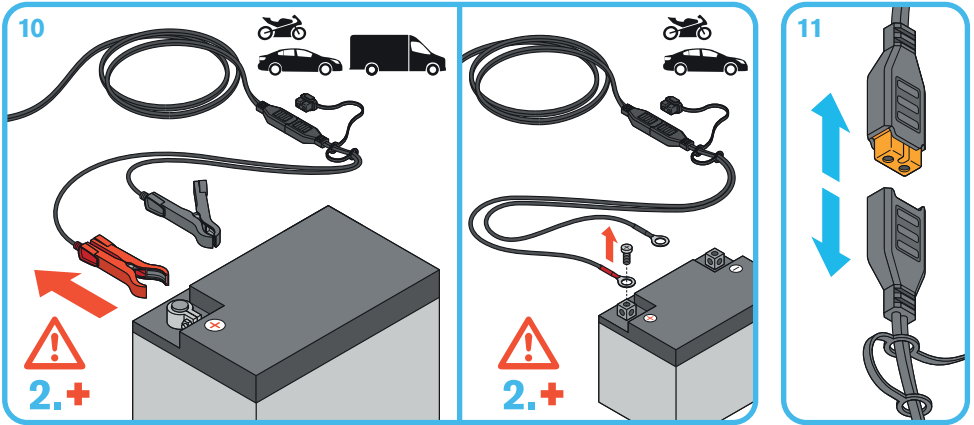
RSC904 / RSC904T / RSC906 / RSC906T / RSC908 / RSC908T

# 4A/6A/8A SMART BATTERY CHARGER AND MAINTAINER

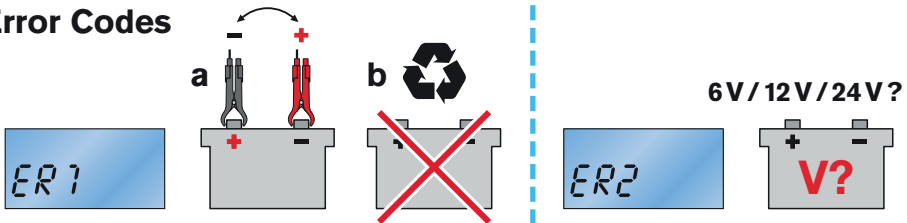
For all battery types, including lithium

	RSC904(T) (4A)		RSC906(T) (6A)		RSC908(T) (8A)	
	230V AC 50 Hz / ≤0.7A		230V AC 50 Hz / ≤1.1A		230V AC 50 Hz / ≤1.5A	
	6V: ≤7.4V	12V: ≤14.8V	6V: ≤7.4V	12V: ≤14.8V	12V: 14.8V	24V: 29.0V
	6V: ≤2A	12V: ≤4A	6V: ≤3A	12V: ≤6A	12V: ≤8A	24V: ≤4A
	6V: ≤40Ah	12V: ≤90Ah	6V: ≤50Ah	12V: ≤110Ah	12V: ≤150Ah	24V: ≤70Ah





### Error Codes



**ER1** (Error Code 1) appears when:

1. Battery clamps are connected incorrectly. The correct connection is Red Clamp to Positive, Black Clamp to Negative.
2. The charger is powered on before being connected to the battery (connect first, then power on).
3. The battery is completely flat. The charger requires at least 2V to add charge; below 2V, it will not charge.

**ER2** (Error Code 2) appears when:

1. A defective battery is connected. Cannot be charged.
2. The battery voltage does not match the selected charge mode (e.g., a 6V battery with a 12V setting).

RSC904 / RSC904T / RSC906 / RSC906T / RSC908 / RSC908T

# 4A/6A/8A SMART BATTERY CHARGER AND MAINTAINER



For all battery types, including lithium



Do not use in extreme heat



Do not use in extreme cold



No drinks/liquids



No smoking/vaping



Keep away from children



Do not drop



Do not expose to moisture



Do not charge a frozen battery



Do not touch clamps together



Keep away from tools and jewellery



Do not damage cables



Do not use with damaged cable



Keep cables away from moving parts



Do not carry by cables



Risk of fire



Risk of electric shock



Risk of hazardous materials



Use in a well ventilated area



Battery may emit fumes



Surrounding items may emit fumes

This appliance is not intended for use by persons (including children) with reduced physical, sensory or mental capabilities, or lack of experience and knowledge, unless they have been given supervision or instruction concerning use of the appliance by a person responsible for their safety. Children should be supervised to ensure that they do not play with the appliance. For indoor use only. Charging only rechargeable Batteries. Disconnect the supply before making or breaking the connections to the battery. WARNING: Explosive gases. Prevent flames and sparks. Provide adequate ventilation during charging, the battery must be placed in a well ventilated area. WARNING: Use of unauthorized parts or failure to follow maintenance Instructions may create a risk of electric shock or injury. File instructions for future reference. Store the manual in a safe place.



Refer to instructions



UK CA UK Conformity mark



CE EU Conformity mark

For list of General Power Tool Safety Warnings please scan the QR code or visit: [www.ringautomotive.com/en/product-safety-documents](http://www.ringautomotive.com/en/product-safety-documents)



WEEE (Waste Electrical and Electronic Equipment Directive)



Do not open



Do not cover

Imported in the EU by  
OSRAM GmbH  
Nonnendammallee 44  
13629 Berlin  
Germany  
[www.osram.com](http://www.osram.com)



C10449058  
G15140283  
14.04.25

Manufactured & Imported in the UK by  
Ring Automotive Limited  
Volvox House, Gelderd Road,  
LEEDS, LS12 6NA,  
UNITED KINGDOM  
Telephone +44 (0)113 213 2000  
Fax +44 (0)113 231 0266  
Email [autosales@ringautomotive.com](mailto:autosales@ringautomotive.com)  
[www.ringautomotive.com](http://www.ringautomotive.com)