



⚠ For installation help, missing or replacement parts -
PLEASE CONTACT KARRAN FIRST

1-866-452-7726
info@karran.com

Register Online:

www.karran.com/productregistration

Installation Guide

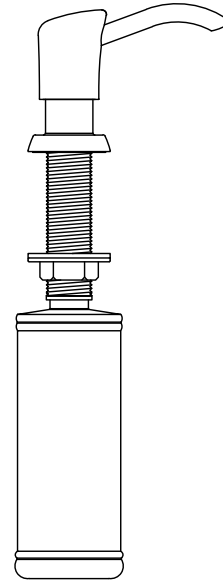


Image is for reference only

SOAP DISPENSER

SD45x, SD55X

MODEL	FINISH
SD45C	Chrome
SD45MB	Matte Black
SD45SFSS	Spot Free Stainless Steel
SD45SFCB	Spot Free Champagne Bronze
SD45SFGG	Spot Free Gunmetal Grey
SD45SFBG	Spot Free Brushed Gold

MODEL	FINISH
SD55C	Chrome
SD55MB	Matte Black
SD55SFSS	Spot Free Stainless Steel
SD55SFCB	Spot Free Champagne Bronze
SD55SFGG	Spot Free Gunmetal Grey
SD55SFBG	Spot Free Brushed Gold

Save this instruction sheet for future reference

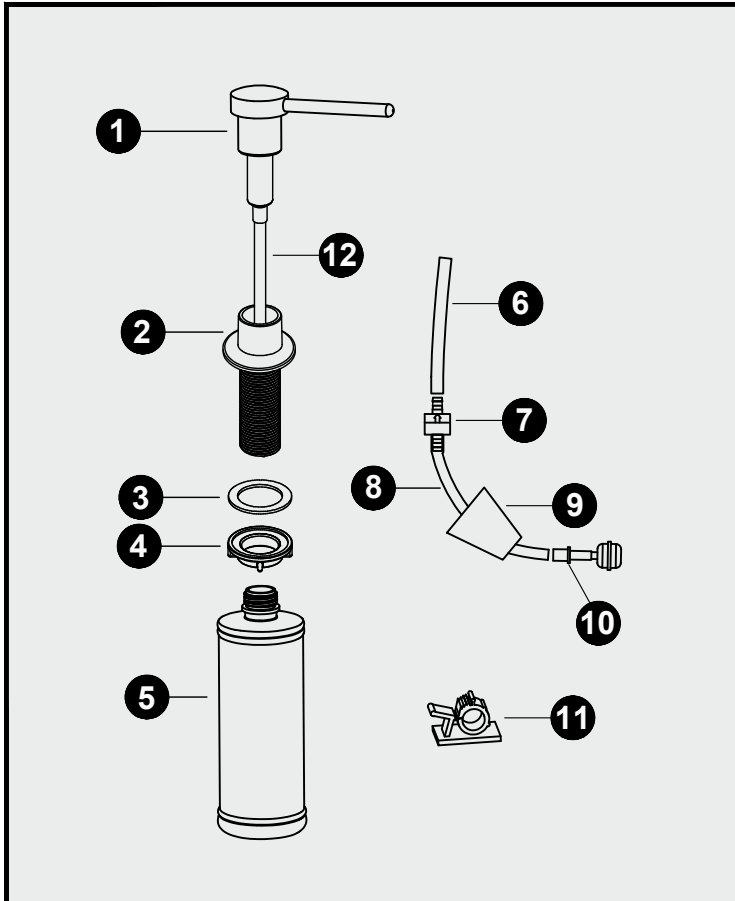
We reserve the right to update product installation instructions without notice. Please visit karran.com for the most current installation instructions.

REV. 07/02/2025

Karran USA - 1291 East Ramsey Rd, Vincennes, IN 47591 - T: 866.452.7726 F: 812.885.2440 - www.karran.com

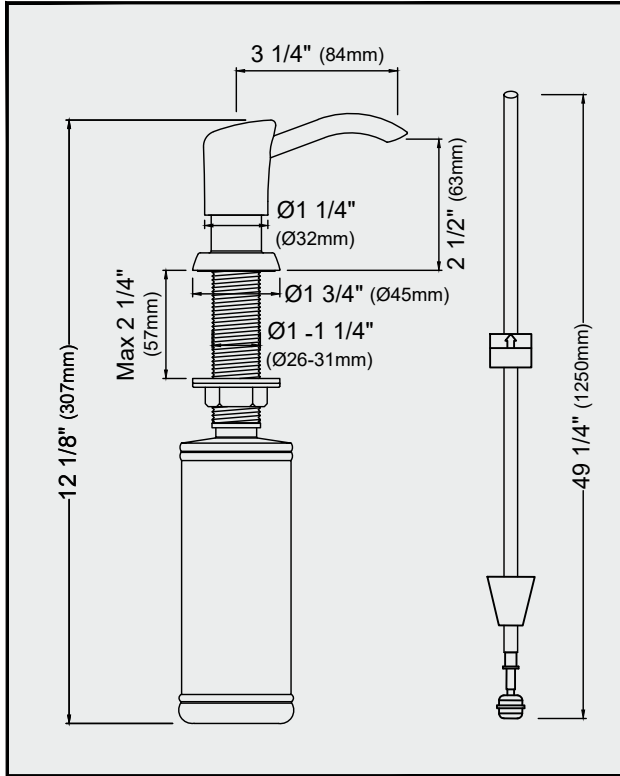


Parts List

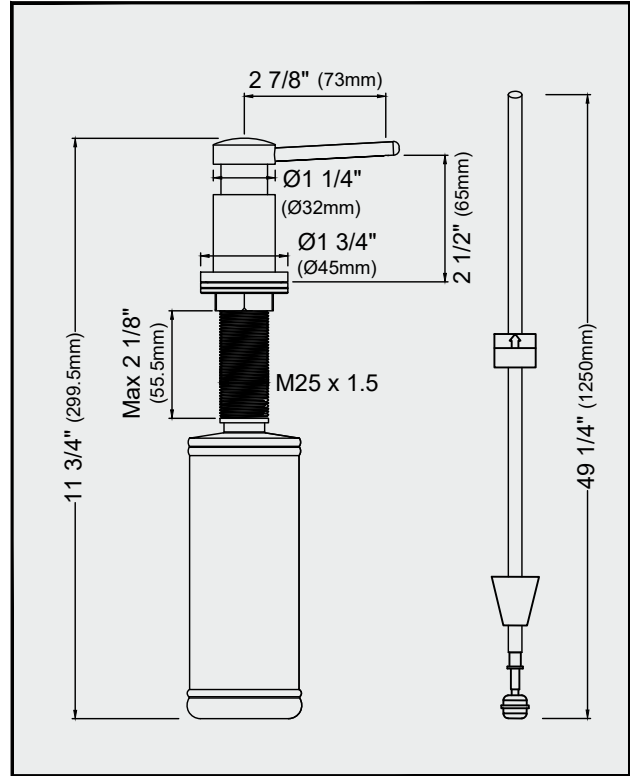


1. Pump
2. Dispenser Base
3. Washer
4. Mounting Nut
5. Dispenser Bottle
6. Extension Tube
7. Check Valve
8. Extension Tube
9. Cap
10. Weight
11. Clip
12. Plastic Tube

Technical Drawing



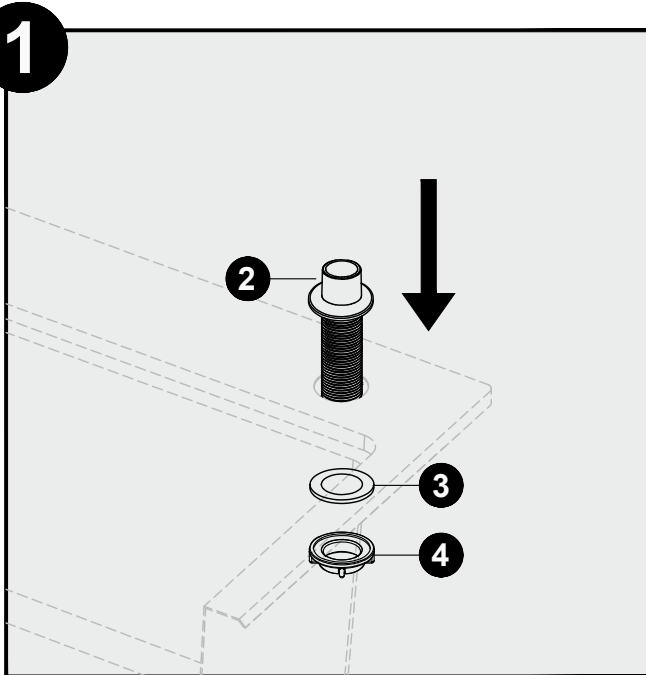
SD45



SD55

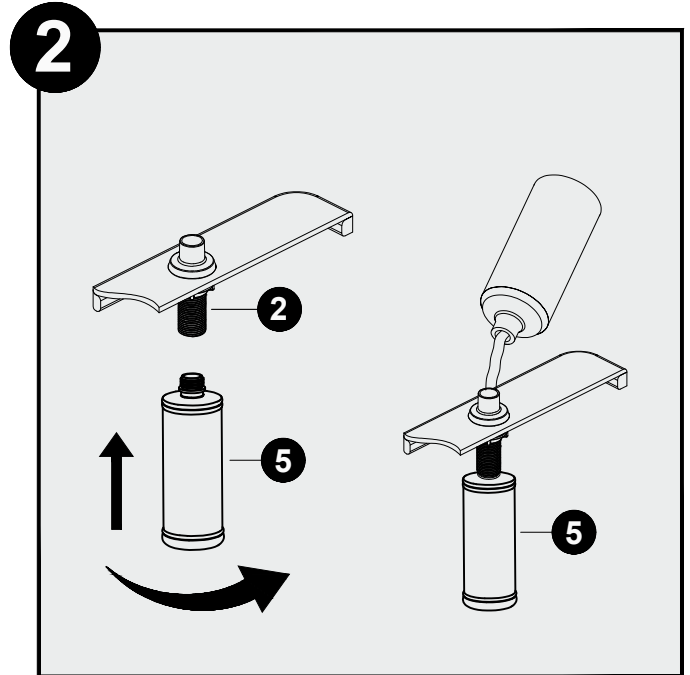
Installation Steps

There are 2 methods of installation, follow the option that best suits your installation needs.

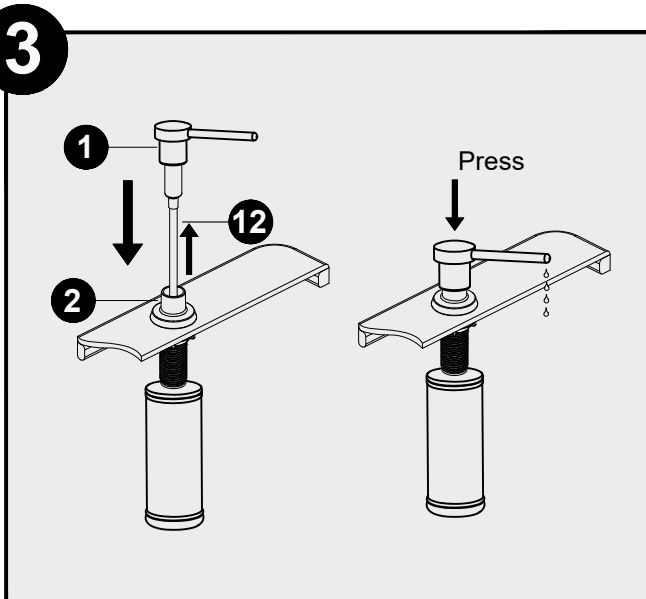


1. Install the dispenser base (2) with the washer attached into the hole in the countertop or sink. Install the washer (3) and mounting nut (4) on the dispenser base (2) from underneath the countertop or sink. Tighten the mounting nut (4) by hand.

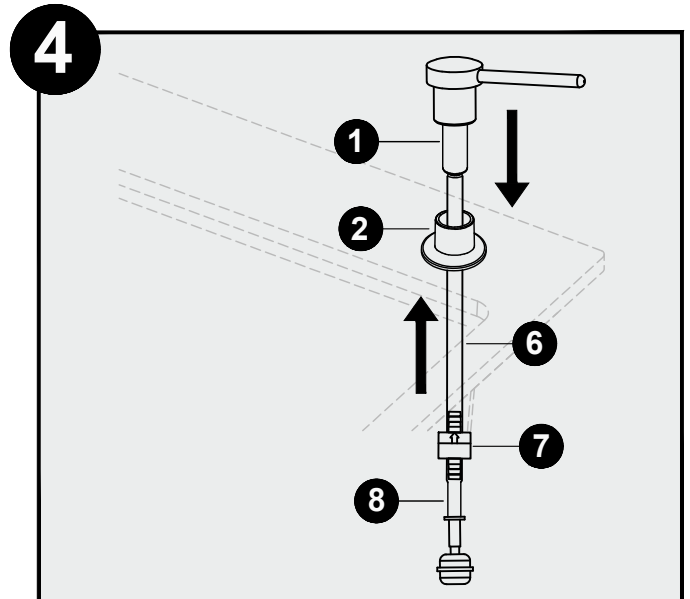
If installing the dispenser with the extension tube, please move to step 4.



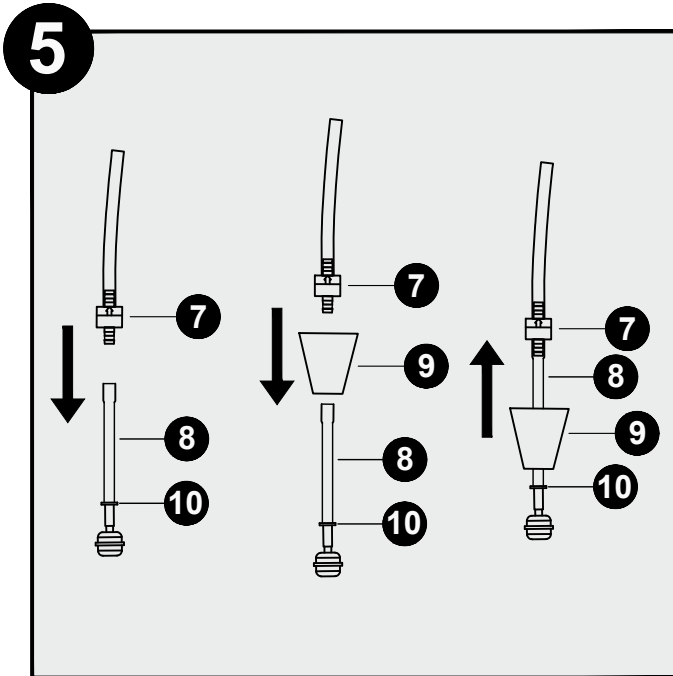
2. Screw the dispenser bottle (5) to the dispenser base (2) from underneath the countertop or sink. Tighten until snug. Fill the dispenser bottle (5) from the top with soap.



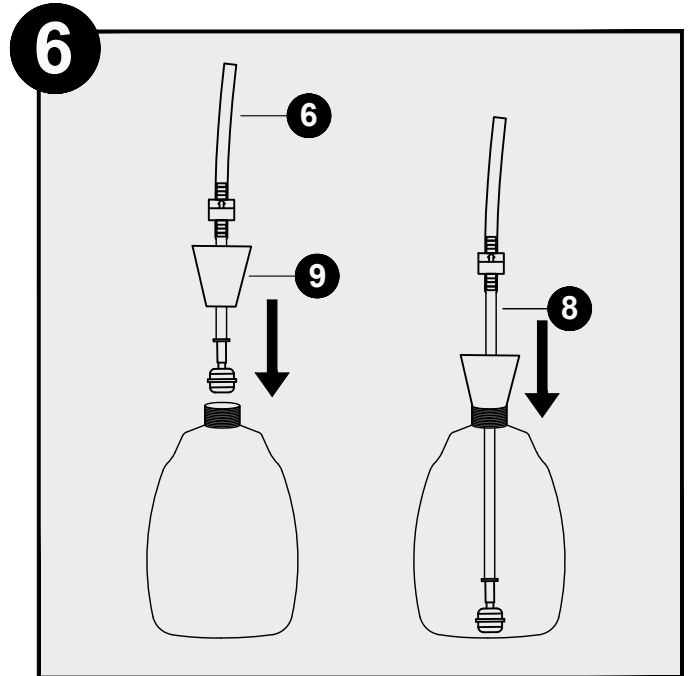
3. Connect the plastic tube (12) to the bottom of the pump. Reinsert the pump (1) with the plastic tube (12) attached into the dispenser base (2) from the top. Press the pump several times to make sure the soap is evenly distributed.



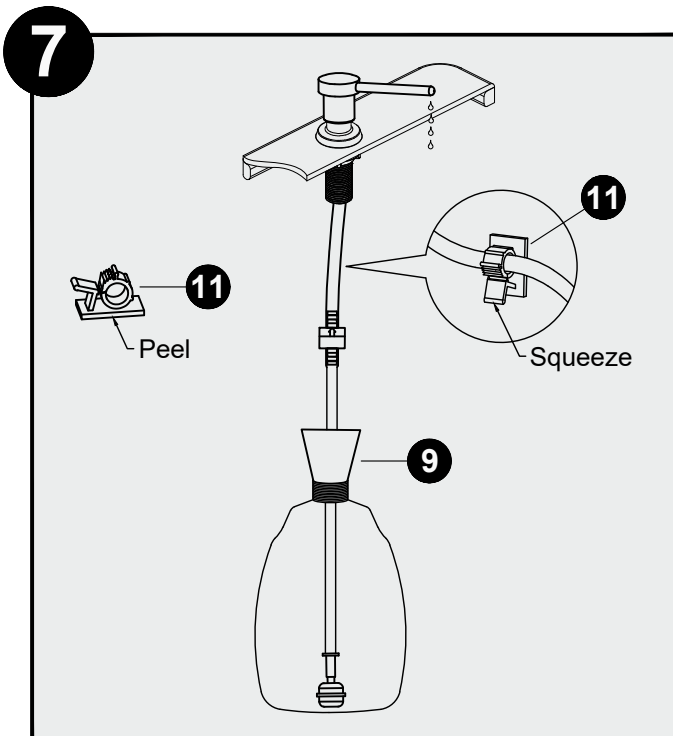
4. Insert the pump (1) into the dispenser base (2) from the top. Attach the extension tube (6) to the bottom of the pump (1) from below the countertop or sink.



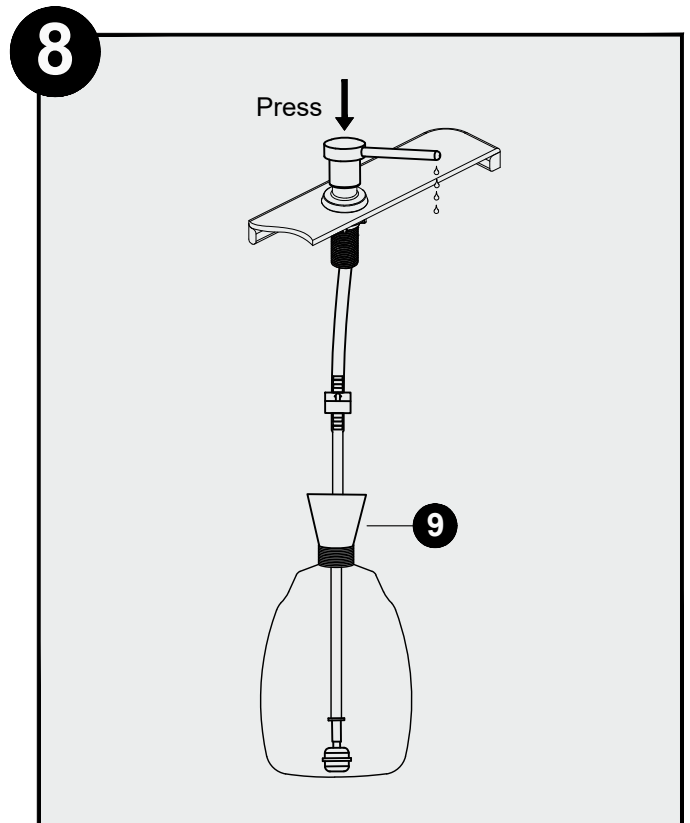
5. Remove the extension tube (8) from the check valve (7). Then insert the cap (9) onto the extension tube (8). Reattach the extension tube (8) to the check valve (7).



6. Place the weighted end of the extension tube (8) into the liquid soap bottle. Push the cap (9) into the bottle by hand.

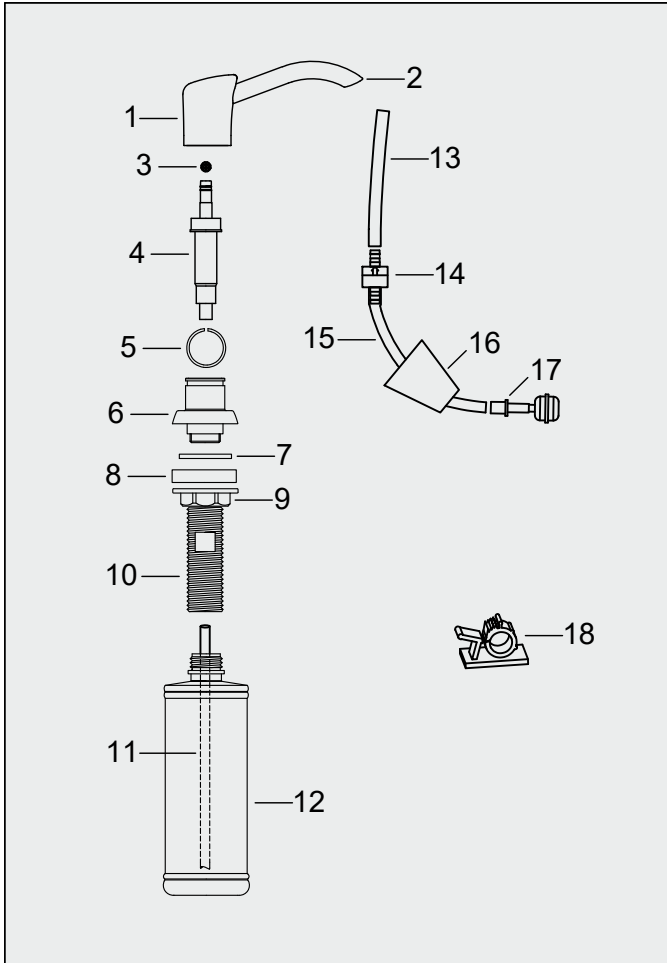


7. Use the supplied clip (11) to secure the tubing to the inside of your cabinet wall, outside of the kitchen sink bowl or as needed. Peel the paper off the flat side and stick it to the cabinet wall. Open the clip by squeezing and slide the tubing in.



8. Press the pump several times to make sure the soap is evenly distributed.

Replacement parts



Description	Finishes	Item No.
1. Head	SS, C, MB, SFCB, SFGG, SFBG, SFSS*	KPSDHE001
2. Spout	SS, C, MB, SFCB, SFGG, SFBG, SFSS*	KPSDSP001
3. Glass Ball		KPSDGB001
4. Pump		KPSDPL001
5. Locking Ring		KPSDLR001
6. Body	SS, C, MB, SFCB, SFGG, SFBG, SFSS*	KPSDBD001
7. Washer		KPSDWA002
8. Washer		KPSDWA001
9. Hex Nut		KPSDHN001
10. Stud		KPSDST001
11. Tube		KPSDTU003
12. Bottle		KPSDBO001
13. Extension Tube		KPSDTU002
14. Check Valve		KPSDCV001
15. Extension Tube		KPSDTU001
16. Cap		KPSDCA001
17. Weight		KPSDWT001
18. Clip		KPSDCL001

*Denotes soap dispenser component color options:

SFSS - Spot Free Stainless Steel

C - Chrome

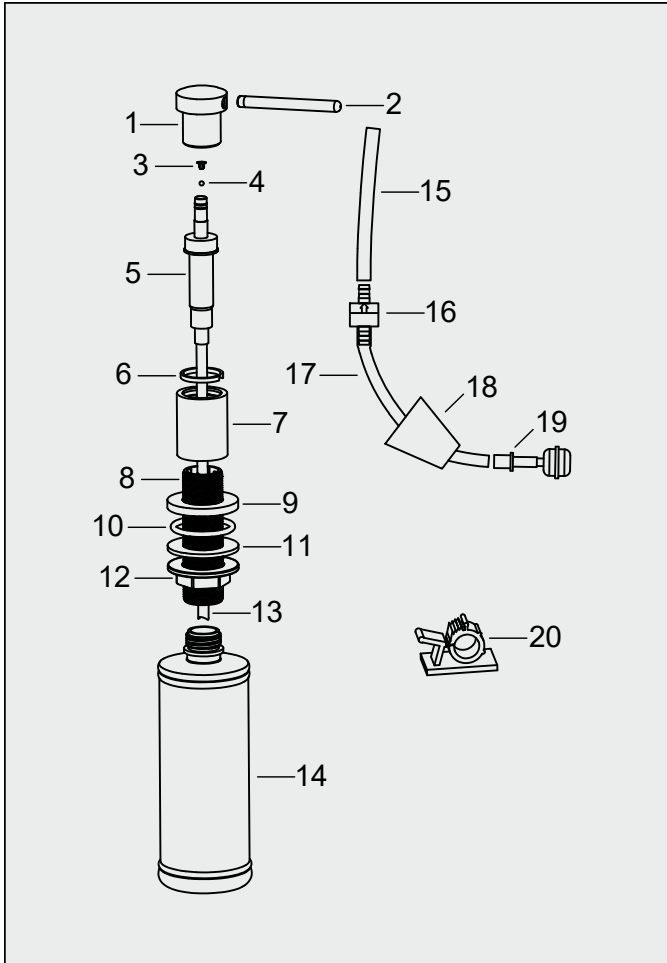
MB - Matte Black

SFCB - Spot Free Champagne Bronze

SFGG - Spot Free Gunmetal Grey

SFBG - Spot Free Brushed Gold

Replacement parts



Description	Finishes	Item No.
1. Head	SS, C, MB, SFCB, SFGG, SFBG, SFSS*	KPSDHE002
2. Spout	SS, C, MB, SFCB, SFGG, SFBG, SFSS*	KPSDSP002
3. Sleeve		KPSDSL001
4. Glass Ball		KPSDGB001
5. Pump		KPSDPL001
6. Locking Ring		KPSDLR001
7. Body	SS, C, MB, SFCB, SFGG, SFBG, SFSS*	KPSDBD002
8. Stud		KPSDST002
9. Flange		KPSDFL001
10. O-Ring		KPSDOR001
11. Washer		KPSDWA003
12. Hex Nut		KPSDHN001
13. Tube		KPSDTU003
14. Bottle		KPSDBO001
15. Tube		KPSDTU002
16. Check Valve		KPSDCV001
17. Tube		KPSDTU001
18. Cap		KPSDCA001
19. Weight		KPSDWT001
20. Clip		KPSDCL001

*Denotes soap dispenser component color options:

SFSS - Spot Free Stainless Steel

C - Chrome

MB - Matte Black

SFCB - Spot Free Champagne Bronze

SFGG - Spot Free Gunmetal Grey

SFBG - Spot Free Brushed Gold

Warranty

Products Subject to this One Year Warranty

This One Year Warranty applies only to manual soap dispensers manufactured and sold by Karran USA (the "Company") (the "Products").

Who is Entitled to this One Year Warranty

The Company grants this One Year Warranty solely in favor of the original purchaser of the Products (the "Original Purchaser"), but to no other person or entity whatsoever. No person or entity, other than the Original Purchaser, shall have any right to assert any claim under this One Year Warranty, or otherwise, in connection with the Products. This One Year Warranty is personal to the Original Purchaser and may not be transferred by the Original Purchaser to any other person or entity, by contract, operation of law, transfer of the property into which the Products are installed, or otherwise.

Commercial Warranty

The Company warrants its Products for a period of (1) year to commercial purchasers of Products used in industrial, commercial and business applications.

Length of this One Year Warranty

This One Year Warranty shall begin on the date the Products are purchased from an authorized Company dealer. The structure and finish of the product as well as the mechanical components such as but not limited to the actuator, piston, spring and ball valve of the product are warranted to be free from defects in material and workmanship under normal usage for a period of one (1) year from the date of purchase. THIS ONE YEAR WARRANTY IS IN LIEU OF ALL OTHER WARRANTIES, EXPRESS OR IMPLIED, INCLUDING BUT NOT LIMITED TO THE IMPLIED WARRANTIES OF FITNESS FOR A PARTICULAR PURPOSE AND MERCHANTABILITY.

Please note that some states/provinces (including Quebec) do not allow limitations on how long an implied warranty lasts, so the below limitations may not apply to you. TO THE MAXIMUM EXTENT PERMITTED BY APPLICABLE LAW, ANY IMPLIED WARRANTY, INCLUDING THE IMPLIED WARRANTIES OF MERCHANTABILITY AND OF FITNESS FOR A PARTICULAR PURPOSE, IS LIMITED TO THE STATUTORY PERIOD OR THE DURATION OF THIS WARRANTY, WHICHEVER IS SHORTER.

What is Warranted

Subject to the conditions and limitations set forth in this One Year Warranty, the Company warrants to the Original Purchaser that during the Warranty Period the Products will be free from manufacturing and design defects when used under normal conditions and maintained properly.

What the Company Will Do

In the event that any Product fails to comply with this One Year Warranty, the Company will free of any cost to you:

1. Provide a replacement part, or component that proves to be defective, or
 - a. If the product cannot be economically repaired, replace the product with the same or a comparable product, or
 - b. If the same or a comparable model product is not available, make a reasonable monetary adjustment, taking into account the age of the defective product; provided that
 - c. In no event will our liability exceed the price you paid for the product (including tax and shipping).
2. We will pay all shipping costs of returning a product to us for inspection (if we make that request) and of sending replacement parts, components, or products to you.

THE FOREGOING DESCRIBES THE COMPANY'S SOLE LIABILITY, AND THE ORIGINAL PURCHASER'S SOLE REMEDY, FOR ANY BREACH OF WARRANTY IN RESPECT OF THE PRODUCTS. THE COMPANY SHALL NOT BE LIABLE FOR, ANY SPECIAL, INCIDENTAL OR CONSEQUENTIAL DAMAGES (INCLUDING LABOR CHARGES TO REPAIR, REPLACE, INSTALL OR REMOVE THIS PRODUCT), WHETHER ARISING OUT OF BREACH OF ANY EXPRESS OR IMPLIED WARRANTY, BREACH OF CONTRACT, TORT, OR OTHERWISE.

How to Make a Claim

To make a claim under this One Year Warranty, the Original Purchaser must notify the Company in writing or by phone of any claimed defect in a Product. Such notice must be given promptly following discovery of the claimed defect. The Original Purchaser must submit with such notice proof of purchase and proof of the date of purchase of the Product claimed to be defective. Notification shall be provided to:

USPS
Karran USA
Attention: CLAIMS
PO Box 667
Vincennes, IN 47591

Email: warranty@karran.com
Phone: 866-452-7726

The Company shall then promptly inspect, by means of digital photography or video supplied by the customer, the claimed defect and if such examination does disclose a defect covered by this warranty, shall, within thirty (30) days after inspection provide replacement parts for the defective Product (as it shall elect in its sole and absolute discretion), subject to the terms set forth above.

Limitations

1. The Company shall not be liable under this One Year Warranty for any of the following:
 - A. Defects in or failure of the Products caused by accidents, physical abuse or misuse of the Products.
 - B. Defects in or failure of the Products caused by installation of the Products not in strict adherence with the written instructions of the Company.
 - C. Defects in or failure of the Products caused by improper care or maintenance of the Products abrasive cleaners such as powders, ammonia, alcohol or chlorine or chlorine or the use of abrasive pads, steel wool or wire brushes.
 - D. Breakage of the Product that is not due to a defect in the manufacture of the Products.
 - E. Any damage to the Products caused by impact of foreign objects, earthquake, or other acts of God or by fire, explosion or other casualty.
 - F. Defects in, failure of, or damage to the Products caused by materials adjacent to the Products.
 - G. Damage to the Products caused by alteration after completion of their installation by anyone who is not authorized by the Company in writing, whether such alteration be by structural additions, changes, replacements or by equipment installation.
 - H. Changes in the Products due to gloss reduction, scratching, staining or alkaline etching of the finish over time due to use, cleaning practices or water conditions, all of which are not manufacturing defects but are indicative of normal wear and tear.
 - I. This warranty does not cover Products that were discontinued when purchased or display Products, whether such Products were purchased at discount outlets, unauthorized dealers, and/or sold on clearance. This warranty does not cover any free gifts included with purchase.
2. IN NO EVENT SHALL THE COMPANY BE LIABLE FOR CONSEQUENTIAL OR INCIDENTAL DAMAGES OF ANY KIND, INCLUDING, BUT NOT LIMITED TO, ANY DAMAGE TO THE PROPERTY IN WHICH A PRODUCT IS INSTALLED, ITS CONTENTS OR ANY PERSON THEREIN. NO FIELD REPRESENTATIVE, DISTRIBUTOR OR DEALER OF THE COMPANY IS AUTHORIZED TO MAKE ANY CHANGE OR MODIFICATION TO THIS ONE YEAR WARRANTY. SOME STATES/PROVINCES (INCLUDING QUEBEC) MAY NOT ALLOW LIMITATIONS ON OR THE EXCLUSION OF INCIDENTAL OR CONSEQUENTIAL DAMAGES, SO THE ABOVE EXCLUSIONS MAY NOT APPLY TO YOU.

The invalidity, illegality or unenforceability of any one or more provisions of this One Year Warranty shall in no way affect or impair the validity, legality or enforceability of the remaining provisions, which shall remain in full force and effect.

Legal Remedies

This warranty gives you specific legal rights, and you may also have other rights which vary from state to state and province to province.

04-1-24