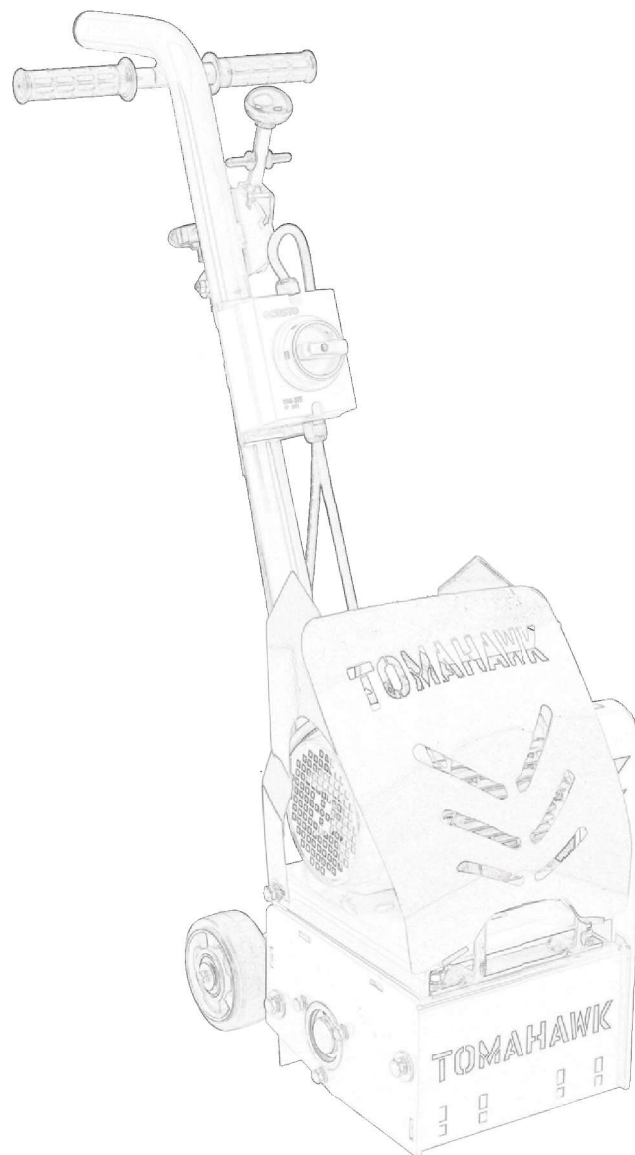


TOMAHAWK

ELECTRIC SCARIFIER

MODEL NUMBER: eTSCAR8

Operation Manual



To reduce the risk of injury, the user must read and understand the Operator's Manual before using this product. Save these instructions for future reference.

TABLE OF CONTENTS

1. SAFETY INFORMATION	4
1.1 Operating Safety	5
2. TECHNICAL PERFORMANCE	6
3. SPECIFICATIONS	6
3.1 Electric Scarifier Parts	6
3.2 Unpacking the Unit	7
4. STARTING	8
4.1 Motor Initial Servicing	8
4.2 Start Up	8
5. ADJUSTMENT	9
5.1 Emergency Shutdown	9
5.3 Stopping the Machine	9
6. OPERATION	9
7. TRANSPORTING	10
8. CUTTER DRUM REMOVAL AND REPLACEMENT	10
9. CUTTER DRUM MAINTENANCE	10
10. AFTER USE	11
10.1 Drive Belt Maintenance	12
10.2 Belt Tensioning	12
11. STORAGE	13
12. REPLACEMENT PARTS	13
13. MAINTENANCE RECORD	13
14. EQUIPMENT WARRANTY	14
15. SERVICE CENTERS	15
16. PARTS MANUAL	18

Register Your Equipment

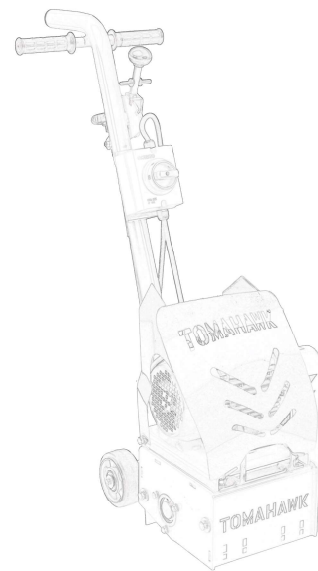
Thank you for purchasing TOMAHAWK equipment! Your product is covered by the TOMAHAWK Warranty policy, but in order to activate your warranty, we need you to register your product. In addition to activating your equipment warranty, product registration will grant you access to important product updates, streamlined customer service and more.

INCLUDED WITH YOUR REGISTRATION

- ✓ Equipment Warranty Activation
- ✓ Product Updates
- ✓ Streamlined Customer Service
- ✓ Exclusive Discounts and Sales

STEPS TO REGISTER YOUR EQUIPMENT

1. Visit www.tomahawk-power.com
2. Choose “Product Registration” at the bottom of the page
3. Enter your equipment’s serial number to get started
4. Provide all required information
5. Submit Registration



Equipment Resources

Tomahawk Customer Service doesn't stop at checkout. We understand to keep a job-site running smoothly - the proper equipment, spare parts, instruction manuals, and more are needed at the drop of a hat. Visit www.tomahawk-power.com to gain access to the incredible resources below.

How To Video Library

More of a visual person? Visit our Video Library for equipment assembly instructions, troubleshooting tips, and more!

Found on each product listing or the [Service Videos Page](#)

Manual and Assembly Guide Library

Visit our Manual Library if you are looking for a lost operations manual or a particular spare part?

Found on each product listing or the [Tomahawk Manuals Page](#)

Service Requests

In need of a quick fix or a service center referral? Submit a Service Request and a Tomahawk Technician will respond shortly to get you the help you need.

Choose “Service Request” at the bottom of www.tomahawk-power.com



This manual provides information and procedures to safely operate and maintain this equipment. For your own safety and protection from injury, carefully read, understand, and observe the safety instructions described in this manual.

Keep this manual or a copy of it with the equipment. If you lose this manual or need an additional copy, please contact Tomahawk Power, LLC or visit www.tomahawk-power.com. This equipment is built with user safety in mind; however, it can present hazards if improperly operated or serviced. Follow operating instructions carefully. If you have questions about operating or servicing this equipment, contact TOMAHAWK®.

The information contained in this manual is based on equipment's production at the time of publication. TOMAHAWK® reserves the right to change any portion of this information without notice.

No part of this publication may be reproduced in any form or by any means, electronic or mechanical, including photocopying, without express written permission from TOMAHAWK®.

Any type of reproduction or distribution not authorized by TOMAHAWK® represents an infringement of valid copyrights and will be prosecuted. We expressly reserve the right to make technical modifications, even without due notice, which aim at improving our machines or their safety standards.

1. SAFETY INFORMATION

This manual contains DANGER, WARNING, CAUTION, and NOTE callouts which must be followed to reduce the possibility of personal injury, damage to the equipment, or improper service.



This is the safety alert symbol. It is used to alert you to potential personal injury hazards. Obey all safety messages that follow this symbol to avoid possible injury or death.



DANGER indicates an imminently hazardous situation which, if not avoided, will result in death or serious injury.



WARNING indicates a potentially hazardous situation which, if not avoided, could result in death or serious injury.



CAUTION indicates a potentially hazardous situation which, if not avoided, may result in minor or moderate injury.

1.1 Operating Safety

Familiarity and proper training are required for the safe operation of equipment! Equipment operated improperly or by untrained personnel can be dangerous! Read the operating instructions contained in this manual and familiarize yourself with the location and proper use of all controls. Inexperienced operators should receive instruction from someone familiar with the equipment before being allowed to operate the machine.

1.1.1 NEVER allow anyone to operate this equipment without proper training. People operating this equipment must be familiar with the risks and hazards associated with it.

1.1.2 ALWAYS be safety-conscious by dressing appropriately during operation. Always wear protective footwear, safety glasses/eyewear, and a hard hat.

1.1.3 NEVER operate this equipment when not feeling well due to fatigue, illness or when medication.

1.1.4 NEVER operate this equipment under the influence of drugs or alcohol.

1.1.5 ALWAYS wear appropriate personal noise protection must be used. The scarifier may produce noise levels exceeding 90 dB(A).

1.1.6 DO NOT use the equipment for any purpose other than its intended purposes or applications.

1.1.7 ALWAYS clear the work area of any debris, tools, etc. that would constitute a hazard while the equipment is in operation.

1.1.8 ALWAYS use only the accessories or attachments recommended by the Tomahawk Power for this equipment. Using unapproved accessories or attachments can result in damage to the equipment and/or injury to the user.

1.1.9 ALWAYS stop the motor and raise the quick lift lever to ensure the cutter drum is lifted off the floor.

1.1.10 Do not remove the side plate or belt guard until the cutter drum has come to a complete stop.

1.1.11 Do not tip the machine backward until the cutters have fully stopped.

1.1.12 Never operate the machine outdoors in wet conditions, as the electrical components are not waterproof.

NOTE: Noise and vibration levels will vary depending on the attachments and the work being performed.



WARNING There is a risk of being crushed if the lifting devices fail.

2. TECHNICAL PERFORMANCE

The Tomahawk eTSCAR-8 Electric Scarifier is your ultimate solution for precision concrete work. Whether you're repairing trip hazards, cleaning floors, or preparing concrete surfaces, this scarifier is engineered to deliver unmatched efficiency and reliability. Powered by a robust electric motor, it effortlessly scarifies, levels, and smooths concrete surfaces at a rate of 350-500 sq. ft. per hour, achieving a depth per pass of 1/8 inch.

3. SPECIFICATION

eTSCAR8 ROLLER COMPACTOR		
Power		2.3HP
Amp		18
Production Rate		350 - 500 sq. ft. per hour
kW(PS)		1.5
Depth		1/8 in per pass
Hz		60
Max. Speed (rpm)		2800
Grinding Width		8 in. (20.32 cm)
Drive Train		Belt
Blade Speed (rpm)		2088
Weight	Lbs (kg)	137.12 lbs (62.2 kg)
	L (cm)	42 in. (106 cm)
	W (cm)	18 in. (45 cm)
	H (cm)	18 in. (45 cm)

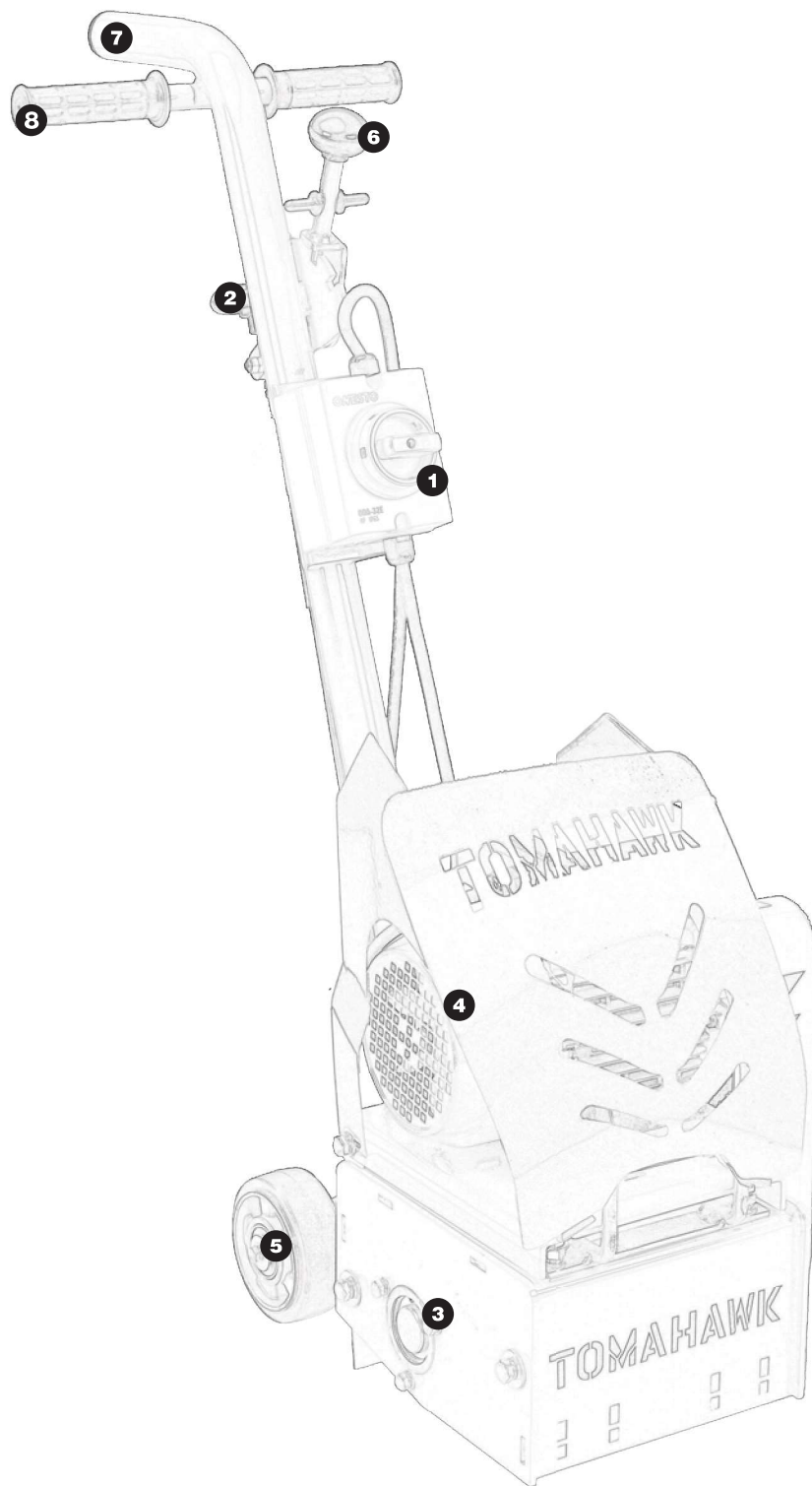
eTSCAR8 VIBRATION EMISSIONS	
Handle in Acceleration (m/s²)	5.2
Uncertainty k in Acceleration (m/s²)	1.5

eTSCAR8 NOISE EMISSIONS	
Measured Sound Power Level in dB(A)	86.7
Noise-sound power level in dB(A)	102.67
Uncertainty k in dB	3

NOTE: 1. Products are tested for sound pressure level in accordance with EN500-1:2006+A1:2009 EN500-2:2006+A1:2008.

3.1 Electric Scarifier Parts

1. Power Switch
2. Depth Crank
3. Drum Blade
4. Motor
5. Wheel Kit
6. Adjustment lever
7. Vacuum Outlet
8. Handles



3.2 Unpacking the Unit

Make sure to carefully remove all parts and accessories from the box. Ensure all parts listed in the manual are in the box. Do not throw away the packaging or packing material until you have inspected all parts and successfully operated the machine. Do not discard this operations manual.

If any parts are missing or damaged, please contact TOMAHAWK® customer support by email at support@tomahawk-power.com or call (866) 577-4476.

4. STARTING

4.1 Motor Initial Servicing

4.1.1 Before starting the machine, ensure :

- Condition of the cutter drum assembly
- Tightness of all bolts
- Condition and tension of the drive belt
- Condition of plugs and cables for any damage
- Oil lever position, which should be at 1/4 to 1/3 of the full travel range.

4.2 Start Up

- **Prepare the Cutter Drum:** Ensure the cutter drum assembly is clear of the ground by raising the quick lift lever. Adjust the handlebar to a comfortable height and position.
- **Connect the Dust Control Vacuum (if applicable):** If a dust control vacuum is being used, connect the vacuum hose to the dust port located at the top of the scarifier handle.
- **Begin Cutting:** To start cutting, move the oil lever to the full-speed position and gently lower the quick lift lever to bring the cutting drum back to the operational position. Use the fine height adjustment hand wheel to achieve the desired depth of cut. Use a 12 gauge extension cord.
- **Set Oil Lever:** Ensure the oil lever is set to the IDLE position to prevent the blade from rotating when starting.
- **NOTE: DO NOT** set the depth too low, as this can overload the machine. The cutters must "float" on the cutter shafts without excessive downward pressure. This allows the cutters to function as intended, acting as flails rather than grinders or picks. The machine should run smoothly with minimal vibration.

5. ADJUSTMENT

5.1 Set the “on-off” handle to the “on” position to ensure the blade is in working condition. **FIGURE 1.**

5.2 To adjust the cutting depth, rotate the set-screw handle until the desired depth is achieved. **FIGURE 2.**

5.1.2 Emergency Shutdown

5.1.2 In case of an emergency, press the Emergency Stop button immediately to halt the machine. **FIGURE 3.**

5.3 Stopping the Machine

5.3.1 Follow proper shutdown procedures when stopping the machine to ensure safety and prevent damage.

5.3.2 Turn the motor switch to the OFF position to cut off the power. **FIGURE 3.**

5.4 Braking

When braking is necessary, engage the braking bar on the wheel to safely stop the machine. **FIGURE 3.**

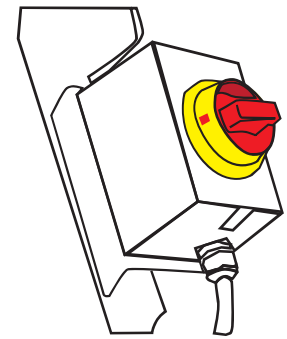


FIGURE 1

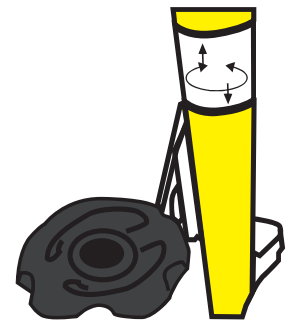


FIGURE 2

6. OPERATION

Excessive downward pressure on the cutters may provide a marginal improvement in work rate and finish; however, this leads to significantly increased wear on the cutter drum assembly, other machine components, and other can overload the motor.

NOTE: Two light passes are quicker and more cost-effective than one slow, heavy pass. Tests have conclusively shown that heavy downward pressure can reduce the life of the cutter and drum by over 50%.

NOTE: To effectively remove dust, connect an industrial dust collector or vacuum to the 50mm port at the rear of the machine. We recommend using CIMAR Dust Control units for nearly 100% dust control. If a dust control unit is not available, it is acceptable to spray water onto the surface or feed water down the vacuum port. Operating the machine in this manner can increase the life of the cutter drum assembly by approximately 10%.

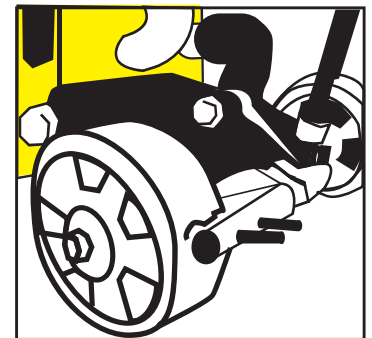


FIGURE 3



CAUTION Failure to follow proper lifting procedures may result in damage to the machine or personal injury. Always use appropriate lifting equipment and follow safety guidelines.



CAUTION There is a risk of being crushed if the lifting devices fail.

7. TRANSPORTING

- **Shutdown the Motor:** Always ensure the motor is turned off during transport.
- **Secure the Machine:** Lock the machine securely to prevent it from moving or toppling over during transport.
- **Qualified Operators:** Ensure that operators responsible for movement and installation hold a valid qualification certificate.
- **Use Proper Tools:** Move the press using appropriate, safe, and reliable tools.

8. CUTTER DRUM REMOVAL AND REPLACEMENT

8.1 To remove the cutter drum, first remove the side plate. The cutter drum will then slide off the drive shaft.

8.2 Installing a new cutter head is simply the reverse of the removal process. **FIGURE 4.**

NOTE: It is crucial to ensure that the four 8 mm set screws remain tight at all times.

9. CUTTER DRUM MAINTENANCE

- **Inspect Flail Shafts:** When changing the cutter drum, always check the flail shafts for excessive wear, particularly for pronounced grooves. Ensure that the centers of the cutters and spacers are not elongated or starting to mushroom.



FIGURE 4

- **Check End Plate Screws:** Ensure that the screws holding the drum end plates in position are tight and in good condition. Running the cutter drum components until they break is an expensive and false economy. Establish a routine for replacing wear parts before they cause significant problems. Remember, the drum assembly strikes concrete with great force approximately 1,800 times per minute.
- **Cost Management:** Anticipate expenditure on consumables and incorporate this into all job costing.
- **Inspect Drive Shaft and Bearings:** While changing the drum, check the condition of the drive shaft and side plate bearings. If you detect any roughness, side play, or grease leakage, replace the bearings. Lightly oiling the drive shaft can help prevent rust buildup, which could complicate future drum changes.
- **Drive Shaft Quality:** The drive shaft is made from high-quality steel and is heat-treated for special properties. It is extremely strong and virtually unbreakable when used correctly. However, exerting sideways pressure on the shaft while it is unsupported by the side plate bearing can cause it to bend.
- **Final Checks:** With the drum removed, check that the vacuum port is free from blockages and ensure that the dust skirt is in good condition.

10. AFTER USE

- **Motor Shut Down:** Ensure the motor is stopped during maintenance, cleaning operations, tool changes, and when transporting the machine using means other than its own power.
- **Cleaning:** Clean the machine to remove all dust and surface residue. When using a hose or pressure washer, avoid directing water onto electrical components and switches, as motors and switches are not waterproof.
- **Regular Checks:** Regularly check that all bolts and nuts are tightened, and retighten them if necessary.
- **Cooling Before Storage:** The motor must be completely cooled before storing the machine indoors or covering it.

- **Long-Term Storage:** If the machine will not be used for an extended period, refer to the specific instructions in this manual.
- **Safety Labels:** Maintain or replace safety and instruction labels as needed.
- **Use Original Parts:** Only use original spare parts or accessories. Using non-original parts or accessories will invalidate the warranty.
- **Silencer Maintenance:** Replace faulty silencers.
- **Braking:** Ensure the brake is engaged when necessary.
- **Height Adjustment Maintenance:** Clean and lightly oil the height adjustment thread. Periodically, remove the threaded section to clean and oil it regularly to ensure smooth height adjustments.

10.1 Drive Belt Maintenance

Following basic procedures will help ensure a long and trouble-free operating life for the drive belt.

- **Daily Checks:**
Inspect the drive pulleys for buildup of debris and trapped stones.
Check the belt and teeth for surface cuts and cracks. Once the belt surface is damaged, it will fail quickly.

Dirt buildup in the pulley teeth can lead to two problems: it can cause the belt to become too tight and prevent the teeth from fully meshing, resulting in power being transmitted only through the tips of the teeth, leading to negative outcomes.
- **Belt Tensioning:**
The drive belt is tensioned using two eye bolts at the front of the motor. Ensure the belt is not over-tensioned; it should be tight enough for all teeth to make full contact but still allow a bit of movement for self-alignment. Excessive tightness can cause serious damage to the drive shaft, drive shaft bearings, and drive motor. A tight belt may produce a low hum or whistle when the motor is running.

NOTE: That the Electric Scarifier should never be operated without a belt guard.

Component Checks: Check all components daily for tightness and verify that the drive belt tension is appropriate.

11. STORAGE

11.1 Wash off dirt and soil from every part of the machine with water. Be careful not to let water splash on the electric components.

11.2 Cover the machine to prevent dust and dirt buildup.

11.3 Store the machine in a dry area away from direct sunlight.

11.4 Do not leave the machine outdoors. Keep it indoors.

11.5 When using the machine after a long storage period, check the motor and drum before use.

12. REPLACEMENT PARTS

12.1 For replacement parts and technical questions visit www.tomahawk-power.com or scan the QR code on the front of this manual.

12.2 Not all equipment components are available for replacement. The illustrations within this manual are a convenient reference to the location and position of parts in the assembly sequence.

12.3 When ordering parts, the following may be required: equipment model number, serial number/lot, date code, and description. The manufacturer reserves the right to make design changes and/or improvements to equipment, parts, accessories, and manuals without notice.

13. MAINTENANCE RECORD

TOMAHAWK® tools are assembled with care and will provide years of service when properly maintained. Preventative maintenance and routine service are essential to the long life of your equipment. Adhere to reading through this manual thoroughly. You will find that you can do some of the regular maintenance yourself. However, when in need of parts or major service, be sure to contact a TOMAHAWK® Technician. For your convenience we have provided this space to record relevant data and maintenance schedule about your TOMAHAWK® equipment.

Invoice Number:		Type of Machine:	
Date Purchased:		Dealer Name:	
Serial Number:		Dealer Phone:	

REPLACEMENT PARTSUSED					MAINTENANCE LOG	
PART NO.	DESCRIPTION	QTY	COST	DATE	DATE	OPERATION

MAINTENANCE CHECKLIST				
Description	ACTION	DAILY: Every 8 hrs to 10 hrs	WEEKLY:	MONTHLY:
Cutters	CHECK	X	X	X
Flail Shafts	CHECK	X	X	X
Nuts And Bolts	CHECK	X	X	X
Belt Tension	CHECK	X	X	X
Plugs And Cables	CHECK	X	X	X
Air Filter	CHECK	X	X	X
Side Plate	CHECK		X	X
Drum	CHECK		X	X
Shaft Bearings	CHECK		X	X
Bush	CHECK		X	X
Shaft	CHECK		X	X
Support Wheels And Grease	CHECK		X	X
Strip Down Fully The Winding Mechanism	CHECK			X
Clean All Threads And Re-Grease	CHECK			X
Grease All Moving Parts On The Height Adjustment Mechanism	CHECK			X

14. EQUIPMENT WARRANTY

Your new TOMAHAWK® equipment is warranted to the original purchaser for a period of one-year (12 months) from the original date of purchase. The TOMAHAWK® warranty is against defects in design, materials and workmanship.

The following are not covered under the warranty:

14.1 Damage caused by abuse, misuse, dropping or other similar damage caused by or as a result of failure to follow assembly, operation or user maintenance instructions.

14.2 Alterations, additions or repairs carried out by persons other than TOMAHAWK® or their recognized agents.

14.3 Transportation or shipment costs to and from TOMAHAWK® or their recognized agents, for repair or assessment against a warranty claim, on any machine.

14.4 Materials and/or labor costs to renew, repair or replace components due to fair wear and tear.

14.5 TOMAHAWK® and/or their recognized agents, directors, employees or insurers will not be held liable for consequential or other damages, losses or expenses in connection with or by reason of or the inability to use the machine for any purpose.

Warranty Claims

Before submitting any warranty claim, you will need to register your new TOMAHAWK® equipment through www.tomahawk-power.com.

Follow the steps on page 3 or scan this QR codes to complete the equipment registration. After registration is complete, all warranty claims should firstly be directed to TOMAHAWK® through the online Service Request form found at www.tomahawk-power.com/pages/service-request.



15. SERVICES CENTERS

Our service centers are equipped to handle your equipment maintenance and repair needs efficiently. With a network of authorized local service locations, you can find expert support and genuine parts needed to keep your equipment running smoothly. All locations are listed on the webpage <https://tomahawk-power.com/pages/find-a-service-center>.



FAST TRACK YOUR FIXER U P P E R

Transform concrete surfaces faster with Tomahawk 10" Electric Floor Grinders! For big projects and busy schedules, remove surfaces up to 250 ft²/hour – perfect for grinding away imperfections, coatings, and leveling surfaces - leaving behind a smooth, textured, or polished finish.



Item #: TGDR10

**10" ELECTRIC FLOOR
G R I N D E R**

www.tomahawk-power.com 



FIX TRIP HAZARDS SAVE THOUSANDS

Tomahawk Scarifiers are perfect for sidewalk trip hazard repair, traffic line/marking removal, and more. Grind and level 350-500 ft²/hour at a depth 1/8" per pass!



Item #: TSCAR-8H

**GAS-POWERED
CONCRETE SCARIFIER**

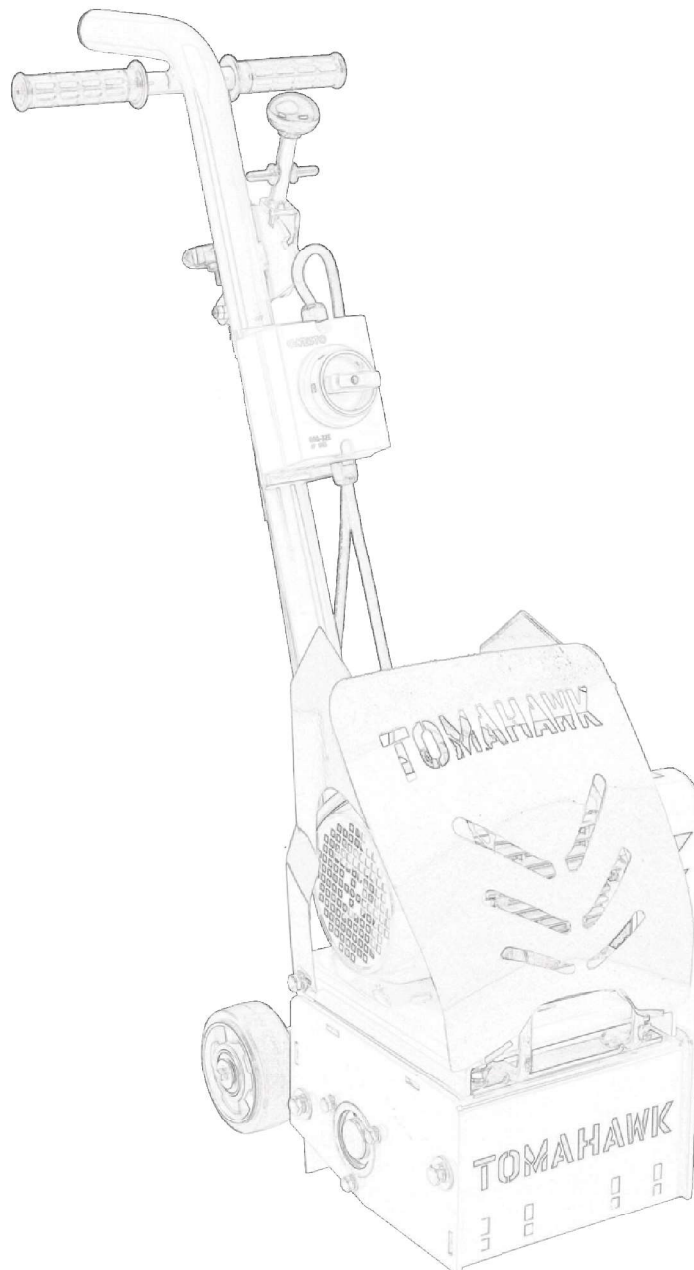
www.tomahawk-power.com 

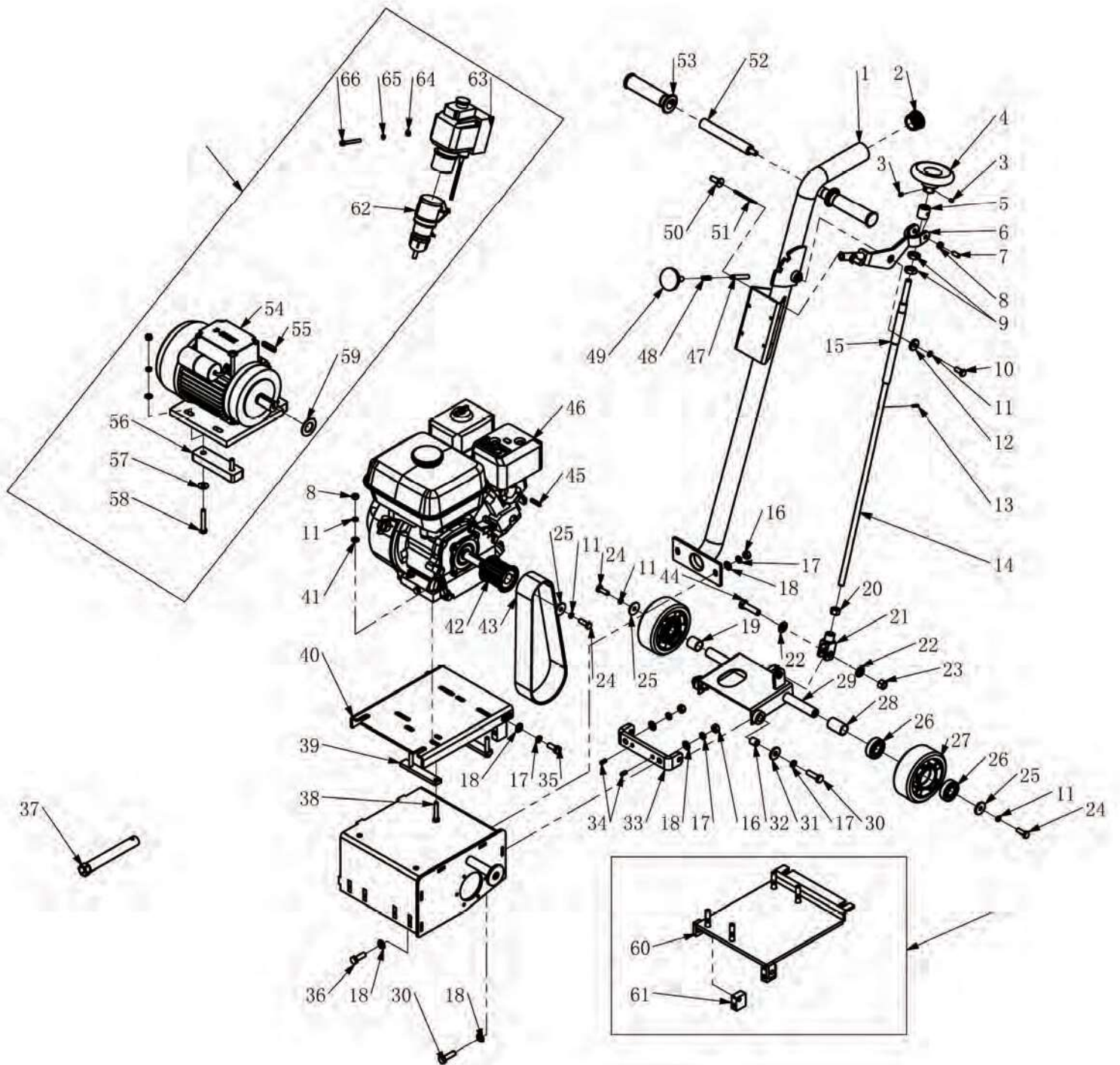
TOMAHAWK

ELECTRIC SCARIFIER

MODEL NUMBER: eTSCAR8

Parts Manual



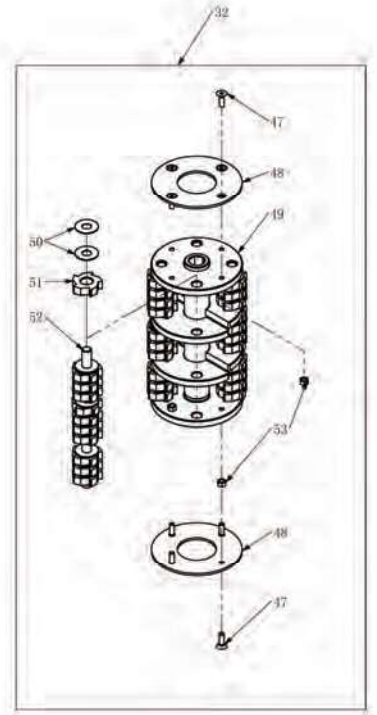
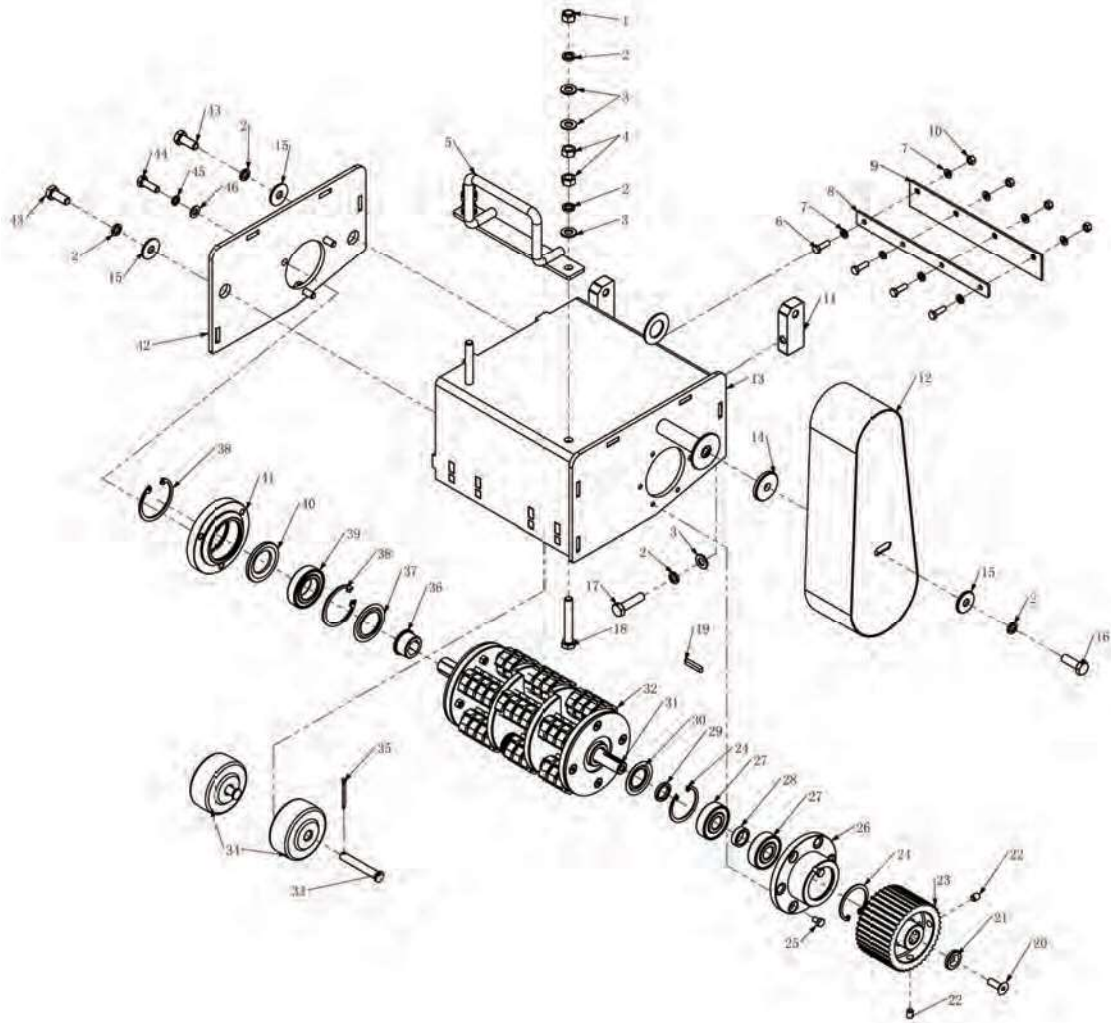


PARTS LIST

No.	Description	Drawing No.	Qty
1	Handle Bar Assy.	1001-09000-3	1
2	Vac Cap	1001-00024-4	1
3	Set Screw M6x8	16060805	2
4	Handle Wheel	1001-00027-4	1
5	Bushing	1001-00018-1	1
6	Lift-Off Handle	1001-10000-3	1
7	Set Screw M8x20	150802016	2
8	Nut M8	13080000	9
9	Nut M16	13160004	2
10	Bolt M8x20	15080200	1
11	Spring Washer M8	12080000	11
12	Washer M8x26x4	11082604	1
13	Spring Pin Φ 3x16	19031601	1
14	Adjustment Bar	1001-00017-1	1
15	Adjustment Tube	1001-02000-3	1
16	Nut M10	13100000	4
17	Spring Washer M10	12100000	8
18	Washer M10	11100000	10
19	Bushing	1001-00012-1	1
20	Nut M12	13120000	1
21	Fork Head	1001-00020-4	1
22	Washer M12	11120000	2
23	Lock Nut M12	13120001	1
24	Bolt M8x25	15080250	3
25	Washer M8x30x3	11083003	3
26	Bearing 6204	216204-2R	4
27	Wheel	24125501	2
28	Bushing (Long)	1001-00013-1	1
29	Wheel Shaft Assy.	1001-07000-3	1
30	Bolt M10x35	15100350	4
31	Washer M10x30x3	11103003	2
32	Washer	1001-00035-4	2
33	Wheel Balance Holder	1001-00003-2	1

PARTS LIST CONT.

No.	Description	Drawing No.	Qty
34	Spring Pin Φ 6x16	19061603	2
35	Bolt M10x25	15100250	2
36	Bolt M10x30	15100300	2
37	Wrench	89218-ZE1-000C	1
38	Bolt M8x45	15080450	4
39	Base Plate for Engine	1001-00015-2	2
40	Base Support for Engine	1001-00001-2	1
41	Washer M8	11080000	7
42	Gear	1001-06100-4	1
43	Belt	27HTD720-8M	1
44	Bolt M12x45	15120450	1
45	Key 5x30	12050530A	1
46	Engine	25160001	1
47	Fixation Pin	1001-00019-1	1
48	Spring	1001-00023-4	1
49	Knob M10x20	1001-00026-4	1
50	Finger Knob	1001-00025-4	2
51	Shaft for Finger Knob	1001-00022-4	1
52	Handle	1001-03000-3	2
53	Handle Grip	70220000	2
54	Electric Motor	25000019	1
55	Key 8x40	20080740A	1
56	Rubber Plate for Electric Motor	1001-00036-4	2
57	Washer M8x22x2	11082202	4
58	Bolt M8x55	15080550	4
59	Washer	1001-00050-2	1
60	Diesel Engine Plate	1001-15000-3	1
61	Support, Diesel Engine Plate	1001-00051-2	2
62	Wire Assy.	1001-14000-1	1
63	Safety Switch	1001-00045-4	1
64	Washer M6	11060000	2
65	Spring Washer M6	12060000	2
66	Allen Screw M6x55	16065503	2



PARTS LIST

No.	Description	Drawing No.	Qty
1	Lock Nut M10	13100001	2
2	Spring Washer M10	12100000	9
3	Washer M10	11100000	10
4	Nut M10	13100000	4
5	Handle Bar	1001-01000-3	1
6	Bolt M6x20	15060200	4
7	Washer M6	11060000	8
8	Wear Plate	1001-00014-2	1
9	Dust Skirt	1001-00030-4	1
10	Lock Nut M6	13060001	4
11	Base Plate Support	1001-00002-2	2
12	Belt Cover	1001-05000-3	1
13	Housing for Cutter	1001-08000-3	1
14	Washer M10x40x5	11104005	1
15	Washer M10x30x3	11103003	3
16	Bolt M10x30	15100300	1
17	Bolt M10x40	15100400	2
18	Bolt M10x70	15100700	2
19	Key 5x30	12050530A	1
20	Allen Screw M8x25	16082504	1
21	Washer	1001-00049-1	1
22	Set Screw M8x10	16081005	2
23	Shaft Gear	1001-00016-4	1
24	Circlip Φ 47	18470002	2
25	Bolt M6x10	15060100	6
26	Bearing Housing Left	1001-00004-4	1

PARTS LIST CON.

No.	Description	Drawing No.	Qty
26	Bearing Housing Left	1001-00004-4	1
27	Bearing 6303	216303-2Z	2
28	Collar (Long)	1001-00005-1	1
29	Collar (Short)	1001-00032-1	1
30	Spacer (Small)	1001-00033-4	1
31	Hexagon Shaft	1001-00009-4	1
32	Drum Assy.	1001-12000-1	1
33	Front Axle	1001-00010-1	2
34	Front Wheel	1001-00029-1	2
35	Pin 3x30	19032003	2
36	Hexagon Bushing	1001-00011-1	1
37	Spacer (Big)	1001-00034-4	1
38	Circlip $\Phi 55$	18550002	2
39	Bearing 6006	216006-2Z	1
40	Spacer	1001-00008-4	1
41	Bearing Housing Right	1001-00007-4	1
42	Housing Cover Right	1001-00006-2	1
43	Bolt M10x25	15100250	2
44	Bolt M8x25	15080250	3
45	Spring Washer M8	12080000	3
46	Washer M8	11080000	3
47	Allen Screw M6x20	16062004	8
48	Safety Plate Cover	1001-00021-2	2
49	Drum Body of Cutter	1001-04000-3	1
50	Washer 12x30x1	1001-00040-4	144
51	Cutter	1001-0004X-4	42/84
52	Cutter Shaft	1001-00031-4	4
53	Lock Nut M6	13060001	8

20
24

TOMAHAWK

Equipment Guide

COMPACTION



Wheel Kit Available



Rammers

Part#:	*Battery Powered Option Available
TR68H	3,550 lbs/sq ft, Honda GX120
JX60H	3,350 lbs/sq ft, Honda GX100
eJX60H	3,350 lbs/sq ft, Honda GXE2.0S



Wheel Kit Available



Forward Plate Compactors

Part#:	*Battery Powered Option Available
TPC80H	3,000 lbs/sq ft, Honda, 21"x17" Plate
TPC85H	3,200 lbs/sq ft, Honda, 23"x17" Plate
TPC90H	3,400 lbs/sq ft, Honda, 22"x20" Plate



Reverse Plate Compactors

Part#:	
TPC100H	3,500 lbs/sq ft, Honda, 19"x14" Plate
TPC170H	7,000 lbs/sq ft, Honda, 28"x20" Plate
TPC400H	11,690 lbs/sq ft, Honda, 32"x22" Plate

CONCRETE



Power Screens

Part#:	*Battery Powered Option Available
TVSA-H	6-16 ft Magnesium Blades Honda GX35, Adjustable Handles
eTVSA	6-16 ft Magnesium Blades 36V/5 Ah Battery, Adjustable Handles



Concrete Sprayers

Part#:	TCS6.5 Adjustable from 0-450 PSI
Handles 30% + Solids, 1.8 HP 2 Stroke Motor, 24" Brass Wand 0.5 GPM, Fan Nozzle Included, Spray 15,000 ft ² in 10 Minutes	



Early Entry Saws

Part#:	
TFS6H	6" Blade Diameter, Blade Compatibility, Honda GX120
TFS10H	10" Blade Diameter, Self Propelled, Blade Compatibility, Honda GX270/GX390

TROWELS



Porta-Trowels

Part#:	JXPT30T Lightweight at 40 lbs
Adjustable 18 ft Extension Bull Float Poles 30" Diameter, 4-Blade Assembly Adjustable Blade Pitch from 0-28°	



Walk Behind Trowels

Part#:	Items Listed Includes Combo Blades
TPT24H	2 ft Edger, Honda GX160, 0-28° Blade Pitch
TPT36H	3 ft, Honda GX160/GX270, 0-28° Blade Pitch
TPT46H	4 ft, Honda GX270/GX390, 0-28° Blade Pitch



Ride on Trowels

Part#:	
TRT46V	8 ft Hydraulic Steer, 35 HP Vanguard, CVT Clutch, 180 RPM
TRT60V	10 ft Full Hydrostatic, 74 HP Hatz Diesel

HAVE QUESTIONS?

Contact us. *We're here to help!*

(866) 577-4476

Email us at sales@tomahawk-power.com



20
24

TOMAHAWK

Equipment Guide

GENERATORS

QUIET INVERTER SERIES



58 db

2,000 - 3,300 Watt Series

TG2000i	2,200w Max / 2,000w Rated
TG3000i	3,300w Max / 3,000w Rated, 120/220V, 30 AMP Twist Lock
	Run Time 8 Hrs @ 50% Load CARB Compliant, GFCI 120v

QUIET INVERTER SERIES



62 db

4,500 - 5,500 Watt Series

TG4500i	4,500w Max / 3,800w Rated
TG5500i	5,500w Max / 5,000w Rated, 120/220V
	Run Time 8 Hrs @ 50% Load CARB Compliant, GFCI

QUIET INVERTER SERIES



62 db

10,500 Watt Series

TG9000i	10,500w Max / 8,500w Rated
	Voltage Selector, 120/220V
	Run Time 14.5hrs @ 25% Load
	CARB Compliant, GFCI, CO Detector

FLOORING

Assorted Blade Choices



Grinders and Scrapers

Part#:	
TGDR10	10" Disc, 120V, 1/32" Per Pass, 11 AMP, 1.5 HP, 1,725 RPM
TSCP8	8" Blade, 120V, 11 AMP, 3/4 HP, 1,725 RPM, Carpet & Tile Remover

Assorted Blade Choices



Concrete Scarifier

Part#:	TSCAR-8H	*Battery Powered Option Available
	Honda GX160 Engine, Scarifies 350 - 500ft ² /hr	
	OSHA Compliant Vacuum Port	
	8" Carbide Tungsten Drum Kit, 1/8" Per Pass	

Assorted Brush Choices



Floor Sweepers

Part#:		*Battery Powered Option Available
TOS38	38" Working Width, Triple Broom System, 14.5 Gallon	
eTOS30	30" Working Width, Battery Powered Triple Broom System, 13.5 Gallon	

OUTDOOR POWER

HONDA ENGINES



Trash Water Pumps

Part#:	
TW3H	3" Pump, Honda GX270, 375 GPM, Elevation: 89ft, Suction: 25ft
TW4H	4" Pump, Honda GX390, 581 GPM, Elevation: 92ft, Suction: 26ft



Power Buggy

Part#:	TBUGGY300e	48V-20Ah Battery
	Handles up to 8 cu ft or 660 lbs. Bucket Capacity	
	Hydraulic Bucket with 92° Tilt, 8 Hour Run Time	
	Snow Plow Attachment & Bucket Extender Available	

HONDA ENGINES



72 db

Welder Generators

Part#:	6010-7024 Rods Compatible	
TWG120A	120 Amp Welder, 60% Duty Cycle, 2000w, Includes Wheel Kit	
TWG210A	210 Amp Welder, 60% Duty Cycle, 2000w, Includes Wheel Kit	

ASSEMBLED IN THE
USA
PARTS SOURCED GLOBALLY

(866) 577-4476

www.tomahawk-power.com



Power Your World

Tomahawk understands to keep a job-site running smoothly the proper equipment and spare parts are needed at the drop of a hat. With same day shipping and faster delivery times, count on Tomahawk to keep you powered throughout the day! With long lasting parts and engines, Tomahawk equipment will be the star of your fleet for years to come. Visit www.tomahawk-power.com to get started today!

TOMAHAWK

TOMAHAWK®, LLC
San Diego, CA

Sales Support
(866) 577-4476
sales@tomahawk-power.com

Equipment Support
(866) 577-4476
support@tomahawk-power.com

www.tomahawk-power.com



FACEBOOK
facebook.com/TomahawkPowerUSA

YOUTUBE
youtube.com/TomahawkPower

INSTAGRAM
[@tomahawkpower](https://instagram.com/tomahawkpower)