



Installation Instructions

Front Mounting Faucet

Model 934GN-LF, 934-10LF, 934-6LF and 934DJ-LF



934GN-LF



Installation of Front Mounting Faucet



1. Check to make sure elbows are tight to faucet body. Attach flexible supply lines to elbows. Hand tighten and maximum 1/4 turn with wrench. Feed supply lines through mounting holes.



2. Feed brass elbows attached to faucet body through mounting holes.



3. Hold faucet body firmly against backsplash aligned with screw holes as shown.



4. Secure faucet body with screws.



5. Completed faucet body installation.



6. Install faucet cover gasket as shown.



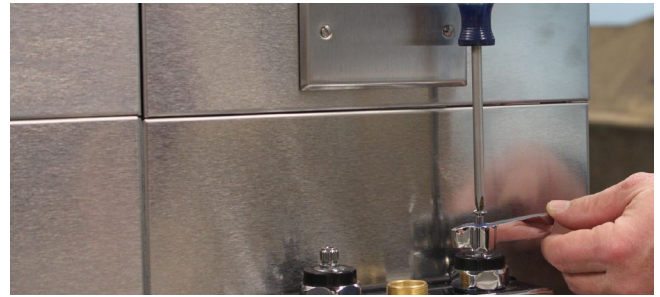
7. Insert top edge of cover into gasket groove. Align holes in top cover with openings in faucet body.



8. Press faucet cover into place so the faucet cover is fully seated within the rim in the gasket, as shown here.



9. Completed faucet cover installation. When seated correctly, the valve body threads protrude through cover as shown.



13. Secure faucet handles to the stem of the faucet valve assembly with screws provided. Red (Hot) on the left, Blue (Cold) on the right.



10. Faucet valve assembly. Turn handle stem to close the valve before installing. Attach handle to stem if needed to close valve.



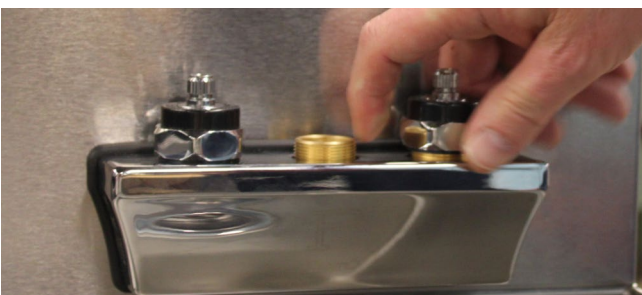
14. Insert the bottom of the spout (goose neck spout shown) into center opening of faucet body.



11. Insert hot water valve assembly in the left opening in the faucet body. Note: Hot and cold valves are identified with "Hot" or "Cold" stamped in valve body. Turn chrome nut on top of valve to tighten. Note: Torque spec is 25 ft. lbs.



15. Secure the goose neck spout by turning the threaded retention collar clockwise until snug. Finish tightening with an adjustable wrench or channel locks. Do not overtighten.



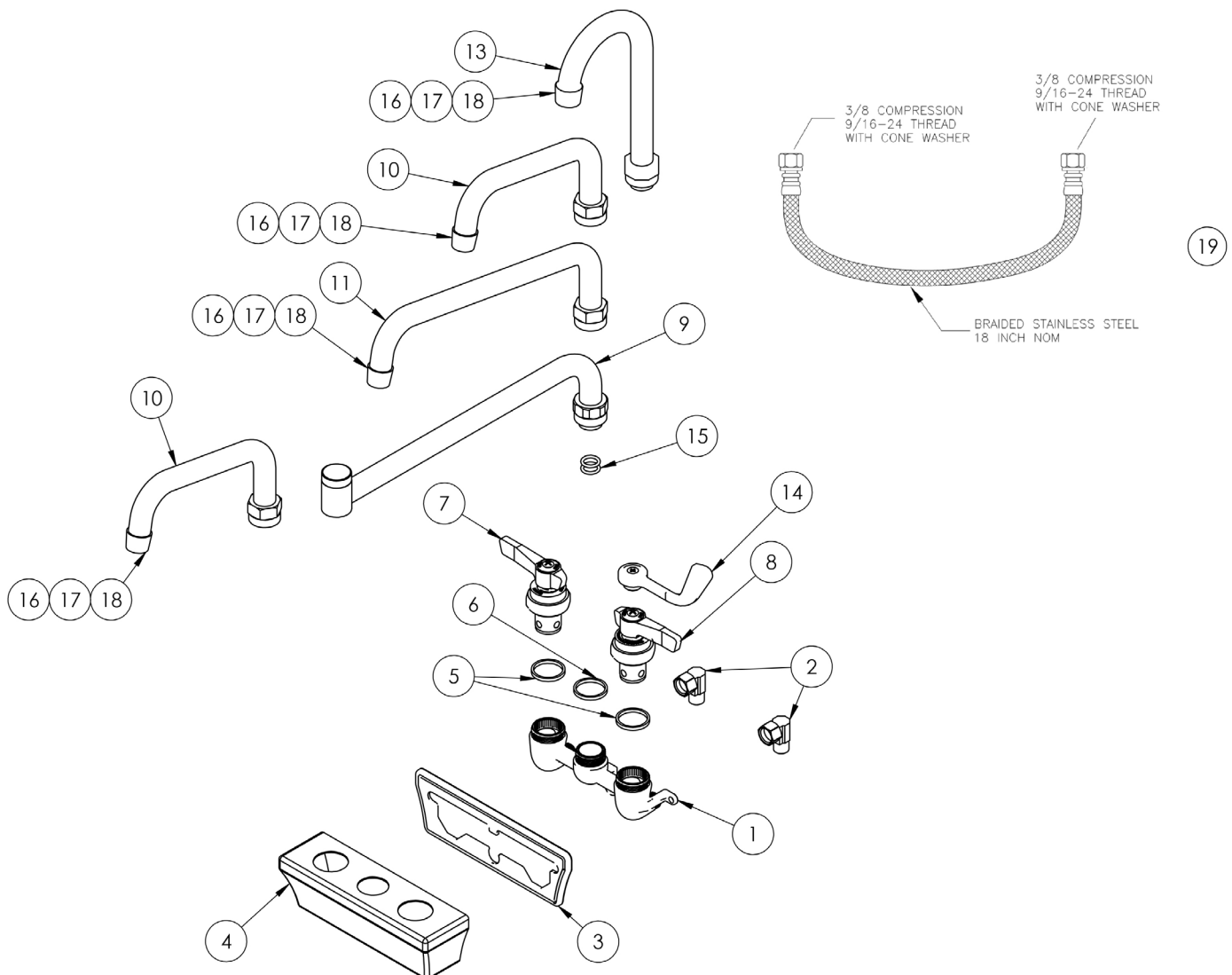
12. Note valve seal must be seated in valve nut before assembly. Insert cold water faucet valve assembly in the right opening in the faucet body. Turn chrome nut on top of valve to tighten. Note: Torque spec is 25 ft. lbs.



16. Stand back and admire your fine work. Well done!

Front Mounting Faucet Parts List

Part No.	Description	Items Included
69878	FAUCET	1, 2, 2, 3, 4, 5, 5, 6, 7, 8
69878EL	FAUCET ELBOW	2
69878CV	COLD VALVE	8, 5
69878HV	HOT VALVE	7, 5
69878SK	SEAL KIT	3, 5, 5, 6
69878CK	COVER KIT	3, 4, 5, 5, 6
43690	SPOUT ASSEMBLY GOOSE NECK	13, 15, 15, 16
40137-6	SPOUT ASSEMBLY 6"	10, 15, 15, 16
40137-10	SPOUT ASSEMBLY 10"	11, 15, 15, 16
40138	SPOUT EXTENSION ASSEMBLY 12"	9, 15, 15, 16
43705	WRIST BLADE HANDLE SET	14
43689	"O" -RING	15
43688	AERATOR 2.2 GPM	16
43688A	AERATOR 0.5 GPM	17
43688F	AERATOR 1.5 GPM	18
43638A	SUPPLY LINE FLEXIBLE	19





8300 West Good Hope Road • Milwaukee, WI 53223 •
Toll Free 800.558.5592 • Fax 414.353.7069 • www.perlick.com