



**We love that you are rocking JLab!  
We take pride in our products and fully stand behind them.**

JLAB®  
GO POP+  
EARBUDS



**YOUR WARRANTY**

All warranty claims are subject to JLab authorization and at our sole discretion. Retain your proof of purchase to ensure warranty coverage.



**CONTACT US**

Reach out to us at [support@jlab.com](mailto:support@jlab.com) or visit [jlab.com/contact](http://jlab.com/contact)

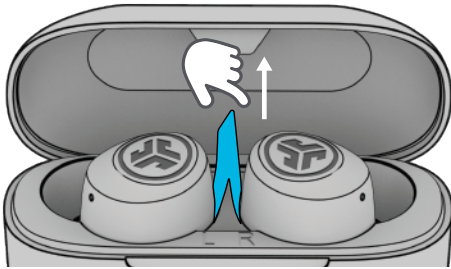
**REGISTER TODAY**

[jlab.com/register](http://jlab.com/register)

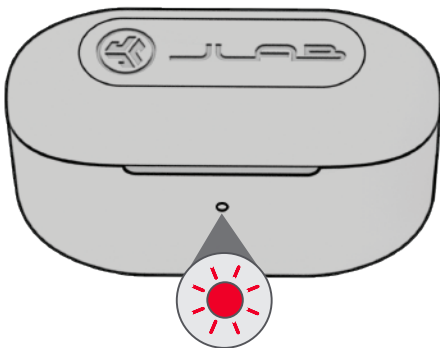
[Product updates](#) | [How-to tips](#)  
[FAQs & more](#)

**BLUETOOTH PAIRING**

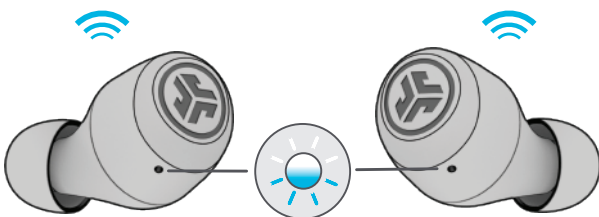
- 1 Remove tab and close door.



- 2 Red light on case indicates charge. Remove earbuds from case.

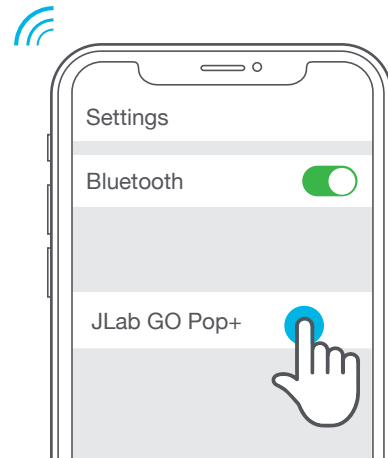
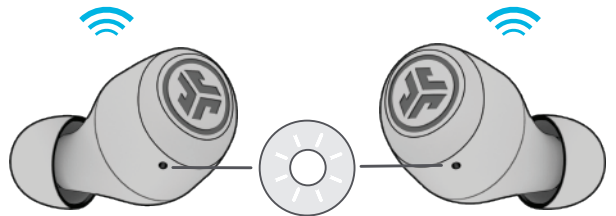


- 3 One earbud will blink blue/white indicating ready to pair to your device.



- 4 Select "JLab GO Pop+" in your device's Bluetooth settings to connect.

Voice prompt "You're connected" followed by **blinking white lights** will indicate you are connected.



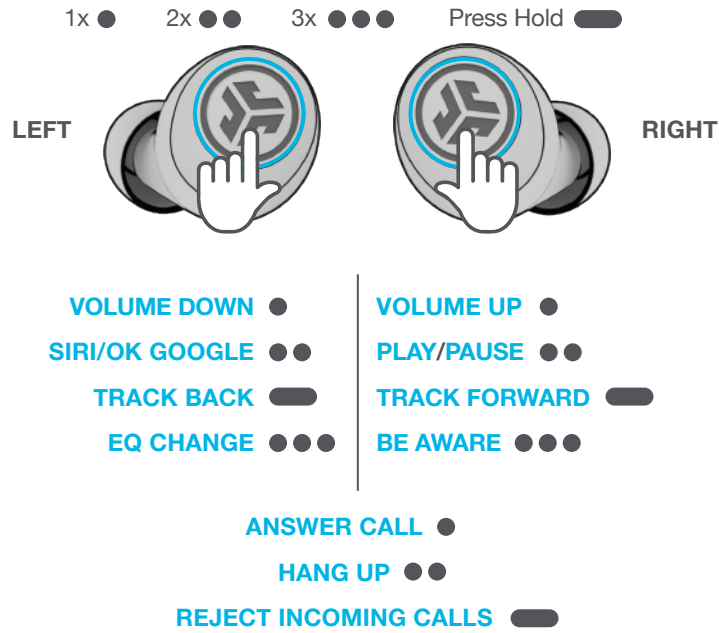
**ADDING NEW / ADDITIONAL BLUETOOTH DEVICES:**

**Turn OFF Bluetooth** from any previously connected device. **Turn ON Bluetooth** from new device.

Take earbuds out of the case. Earbuds will automatically enter Bluetooth Pairing.

Select "JLab GO Pop+" in device settings to connect.

## BUTTON FUNCTIONS



## CUSTOM EQ<sup>3</sup> SOUND MODES

Tap either the right or left earbud 3 times for different EQ settings (GO Pop+ will cycle 4 EQ settings).



**JLab SIGNATURE**  
JLab C3™ signature sound with amplified bass and vocals



**BALANCED**  
Even sound with no additional enhancements



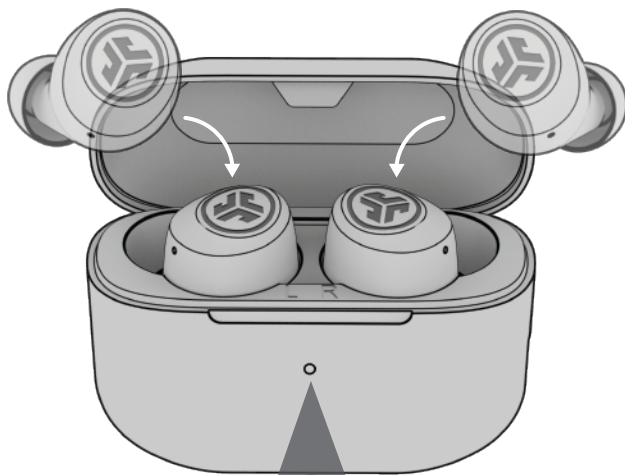
**BASS BOOST**  
Amplified bass and sub-bass



**CUSTOM**  
Personalize your EQ through the JLab App.

## CHARGING EARBUDS

**1** Earbuds will power off when placed in the case and start charging the earbuds.

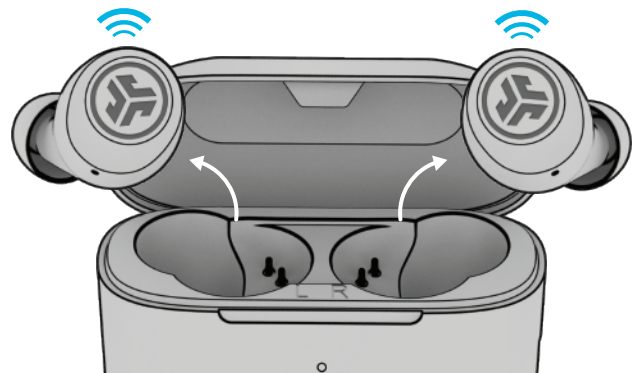


**Solid Red**  
Case 100-25%



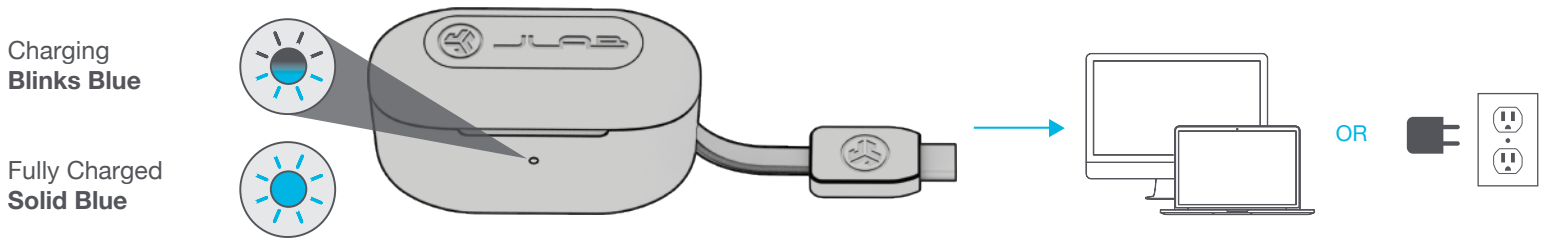
**Blinks 4x Red**  
Case less than 25% (charge case)

**2** Earbuds will auto power on and connect to your device when removed.

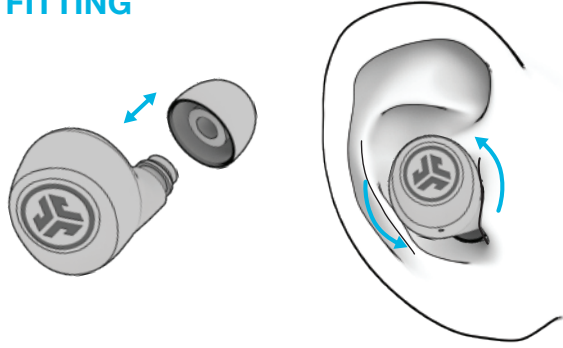


## CHARGING CASE

Connect the GO Pop+ into a computer or USB-C 5V 1A (or less) output device.



## FITTING



Try all ear tips for best fit and proper seal.

Place the earbud in the ear canal and slightly rotate to adjust for best fit.

## QUICK TIPS

- The left or right earbud can be used independently for music and phone calls. Simply choose one and take out of the case to connect.
- Only ONE Bluetooth device can be connected at a time. Turn off Bluetooth on unwanted devices and turn on Bluetooth on chosen device to connect.
- Fully dry off earbuds before putting in the charging case to avoid any damage to the case. The earbuds are sweat/water resistant but the case is not.

## WARNING

**Fully dry off the earbuds before putting in the charging case to avoid any damage to the case.**

The earbuds are sweat/water resistant but the case is not.



## TROUBLESHOOTING

**Connection failure or earbuds disconnected from each other (Manual Reset)**

- 1 Keep the earbuds in the charging case and forget “JLab GO Pop+” from your Bluetooth device settings.
- 2 Quick tap 7x on one earbud in charging case. Earbud blinks blue 4 times.
- 3 Quick tap 7x on other earbud in charging case. Earbud blinks blue 4 times.
- 4 Take both earbuds out of the charging case.  
One earbud will be solid white and other will blink blue/white indicating ready to pair to your device.

**Instructional videos at: [JLAB.COM/SUPPORT/GOPOPPLUS](https://www.jlab.com/support/gopopplus)**

## CAUTIONS

- Avoid extreme heat, cold, and humidity.
- Avoid dropping or crushing the earbuds.
- Wax may build up in the earbud tips, lowering the sound quality.  
Carefully remove the wax with a cotton swab or other small tool to improve the sound quality.
- If you experience discomfort or pain, try lowering the volume or discontinuing use temporarily.
- If you experience regular discomfort while using this product, discontinue use and consult your physician.
- We recommend you treat your earbuds as you would a nice pair of sunglasses and keep them in safe location when not in use.



[Shop products](#) | [Product alerts](#) | [Burn-in your headphones](#)

JLab Store + Burn-in Tool



[JLAB.COM](https://www.jlab.com)