

## MODEL: IM-100

### Instruction on Replacing The Fan:

1. Please remove the two screws that fix the side housing (IMG-01).
2. Remove the side housing and you will see the fan. Remove the two screws from the bottom of the ice maker. (IMG-02)
3. Remove the two screws on the back of the unit. One screw is covered by the label. (See IMG-03 and IMG-04).
4. There are two more screws at the bottom of this unit. Please unscrew them. (IMG-05).
5. After removing the back cover, also remove the six screws on the metal strip (IMG-06).
6. Take off the cover of the plastic box (IMG-07).
7. Remove fan, please note the fan has two wire connections to the control board – note the connection points. Install new fan and connect the 2 wires.
8. Reposition the housing.



<IMG-01>



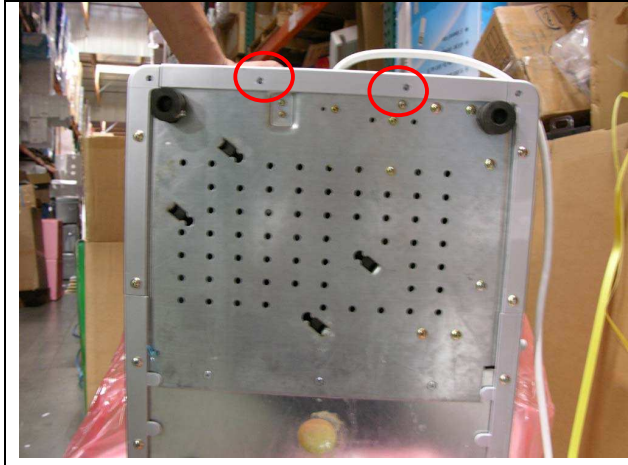
<IMG-02>



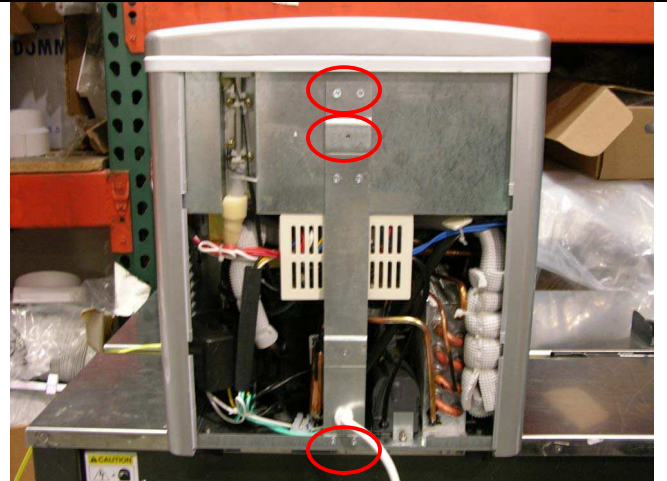
<IMG-03>



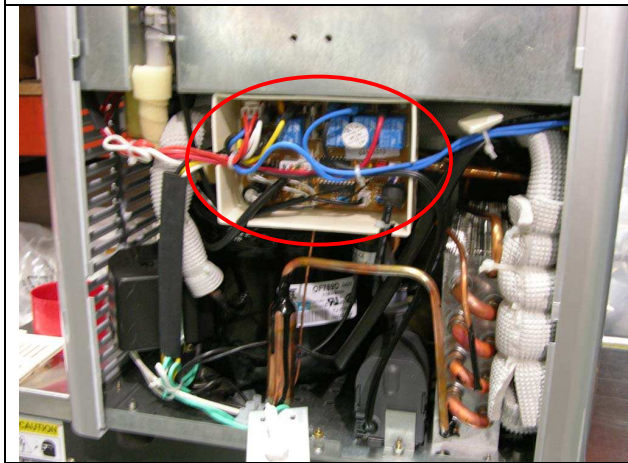
<IMG-04>



<IMG-05>



<IMG-06>



<IMG-07>