

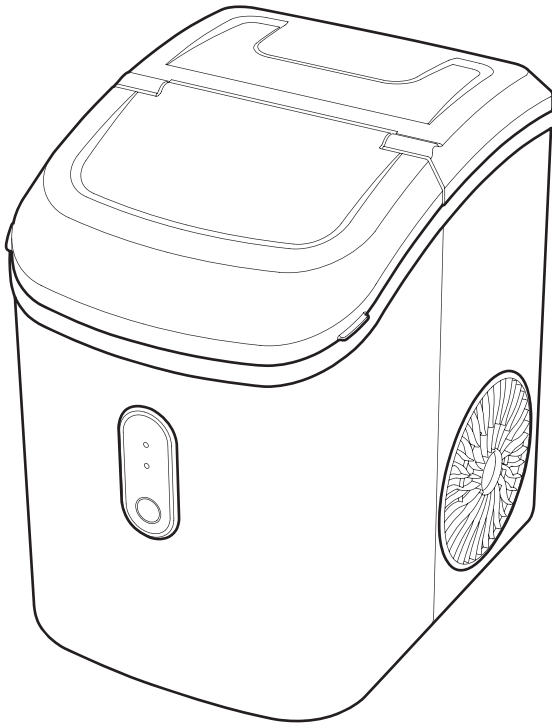
# INSTRUCTION MANUAL

# Silonn

Rev00(A)

---

**SLIM17B/SLIM17T/  
SLIM17G1/SLIM17G**



## Ice Maker

---

✉ [support@silonn.com](mailto:support@silonn.com)

☎ 877-546-8603

# PAGE CONTENT

IMPORTANT SAFETY INFORMATION .....	01
PRODUCT INTRODUCTION .....	03
CONTROL PANEL INTRODUCTION .....	04
USING YOUR ICE MAKER .....	05
CLEANING AND MAINTENANCE .....	07
PRODUCT SPECIFICATIONS .....	08
TROUBLESHOOTING .....	09
SHORT AND LONG-TERM WARRANTY INFORMATION .....	10

# IMPORTANT SAFETY INFORMATION

To reduce the risk of injury or property damage, please follow these safety precautions.

## WARNING



- Voltage power from outlet must match specifications on appliance nameplate.



- This appliance **must be** grounded.



- Using an extension cord may cause overheating and increase the risk of fire.

If an extension cord **MUST** be used:

- 1) **Only use an** extension cord with grounding plug.
- 2) The marked rating of an extension cord **must be** equal to or greater than the rating of this appliance.

- **Do not** operate if any component, including the cord or plug, is damaged.
- Unplug the unit before cleaning by hand.



- Only responsible and capable adults should operate the ice maker.
- **Do not** place the power cord where it could be pulled by children or pose a tripping hazard.
- Children should not be left unattended near the ice maker during operation.



- **Do not** use water that is micro-biologically unsafe or of unknown quality.



- **Do not** remove any safety, warning, or product information labels from the unit.



- **Do not** touch the evaporator with your hands while the ice maker is operating.

- **Do not** plug in or unplug the unit with wet hands.



- The unit **must be** placed and set up according to installation instructions before use. The unit is for indoor household use only.



- **Do not** store or use flammable vapors or liquids near the unit.
- **Do not** immerse any part of the unit in water.



- **Do not** attempt to disassemble, repair, modify or replace any part of the ice maker without permission from Silonn or its affiliates.

## WARNING



FIRE OR EXPLOSION HAZARD Flammable Refrigerant

This unit contains an isobutane refrigerant, also known as R600a, a natural gas with high environmental compatibility.

However, it is also combustible. Adhere to the warnings below to reduce the risk of injury or property damage.



1. When handling, installing, and operating the unit, care should be taken to avoid damage to the refrigerant tubing.



2. Only dispose of the unit according to Federal and Local Regulations. Contact your local authorities for the environmentally safe disposal of the unit.



3. Keep ventilation openings around the unit's enclosure clear of obstruction.



4. **Do not** place the unit near heat sources such as an oven.



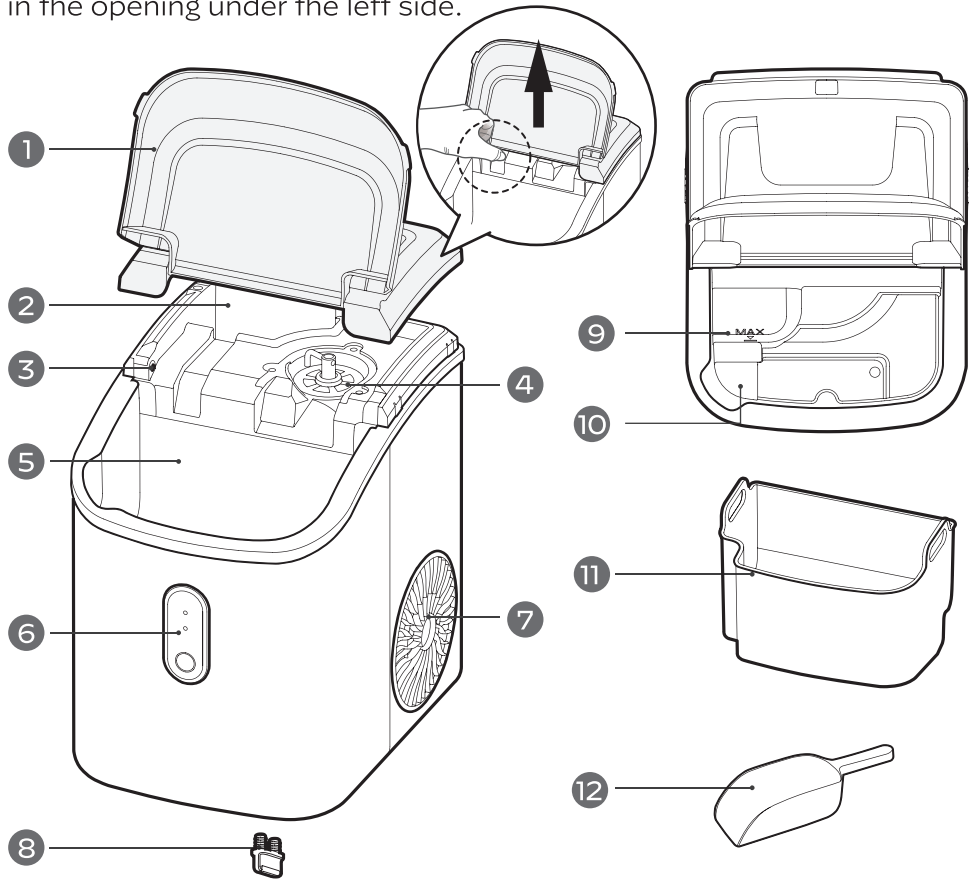
5. Ensure a minimum of three inches of clearance around the side and back walls of the unit for proper air circulation.



6. **Do not** place the unit in direct sunlight.

# PRODUCT INTRODUCTION

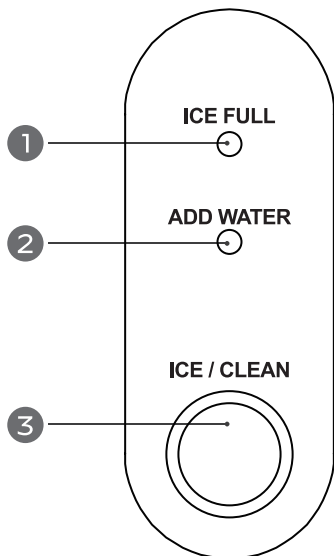
**Tip:** To pull off the cover, place your fingers in the opening under the left side.



- 1.** Removable Top Cover
- 2.** Secondary Water Reservoir
- 3.** Ice Full Sensor
- 4.** Ice Outlet
- 5.** Water Reservoir
- 6.** Control Panel

- 7.** Air Exhaust Fan
- 8.** Drain Plug
- 9.** Maximum Water Fill Line
- 10.** Filter
- 11.** Ice Basket
- 12.** Ice Scoop

# CONTROL PANEL INTRODUCTION



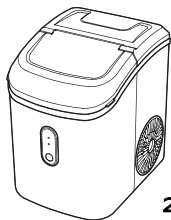
	Key (with indicator light)	Function
<b>1</b>	ICE FULL	The indicator light turns red when the ice basket is full.
<b>2</b>	ADD WATER	The indicator light turns red when the water reservoir needs water.
<b>3</b>	ICE/CLEAN	Short press the "ICE/CLEAN" button to turn on the ice maker and the ring indicator light turns white.
		Short press the "ICE/CLEAN" button to turn off the ice maker and the ring indicator light turns red.
		The ring indicator light turns red when the ice maker is in standby mode. In standby mode, long-press the "ICE/CLEAN" button for 5 seconds and the ice maker will switch to self-cleaning mode. The ring indicator light will flash in white consecutively.

# USING YOUR ICE MAKER

## BEFORE FIRST USE

1.

Stand upright for 24hrs.



24Hrs

Check for accessories.



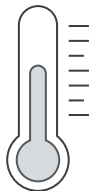
Missing parts?  
Contact us.



Customer Service

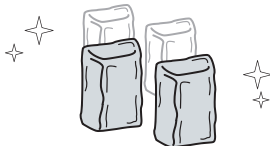
2.

Use in locations  
10°C ~ 32°C.



10°C ~ 32°C

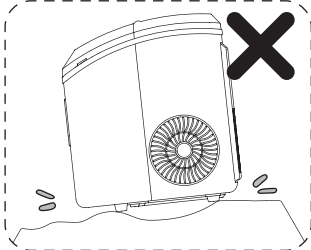
Perfect ice shape.



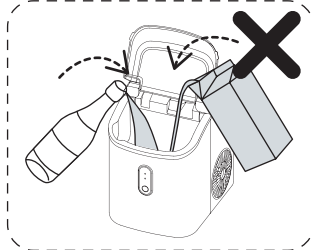
More Cycles = Perfect Shape

## 3. What Not To Do!

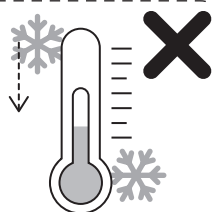
Unstable base.



No other liquids  
(Drinking water only).

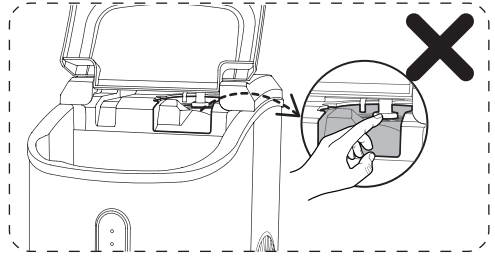


Do not use in  
high or low temps.



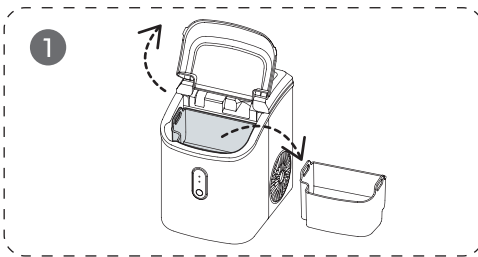
lower than 41°F/5°C

Do not put your fingers into the ice outlet. The ice maker will detect ice is full and stop working. Wait 3 mins before further operation.

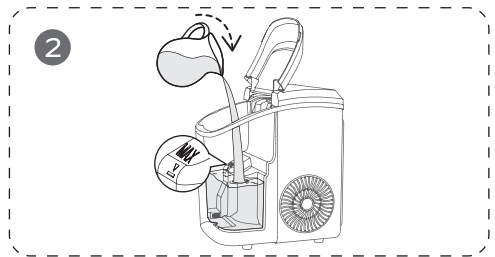


## HOW TO USE YOUR ICE MAKER

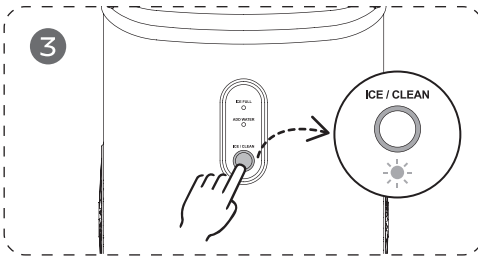
Open cover and remove basket.



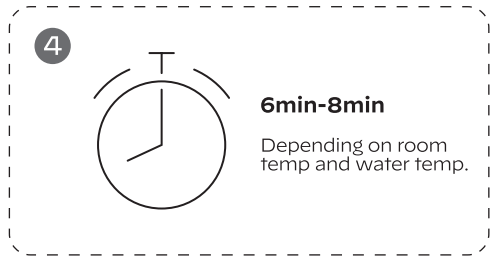
Pour water, do not exceed the "MAX" water mark.



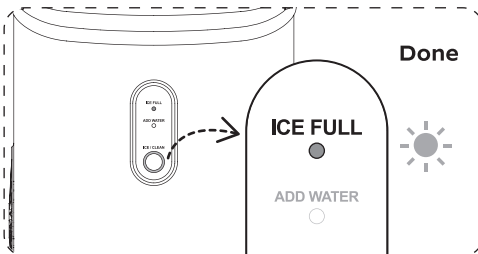
Press the "ICE/CLEAN" button.



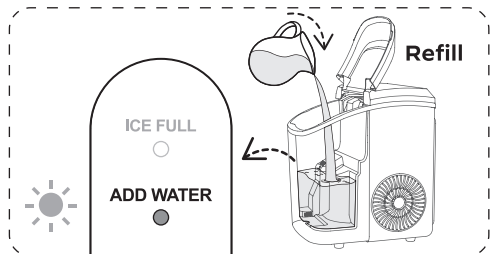
Wait 6min-8min.



Ice full and ready when "ICE FULL" indicator is on.



When "ADD WATER" indicator is red, add water and press "ICE/CLEAN".



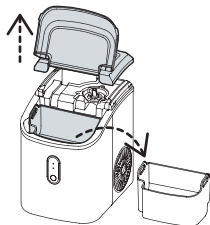
# CLEANING AND MAINTENANCE

To keep your ice tasting fresh and the unit looking great, we recommend cleaning the unit once per week.

## MANUAL CLEANING

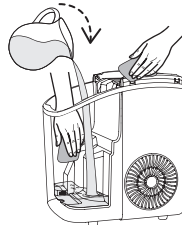
1

Remove the top cover and basket.

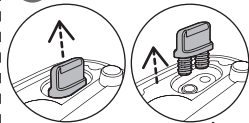


2

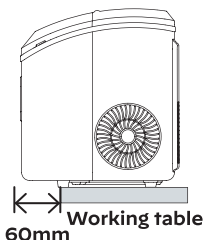
Clean both water reservoirs using a soft cloth dampened with warm water and vinegar, then rinse with clean water.



3 Drain Plug



Drain excess water over sink.



4

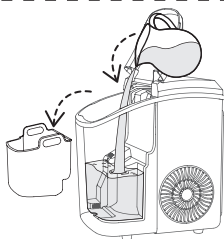
Clean exterior with cloth and mild dishwashing soap.



## SELF-CLEANING (15-MIN PROCESS)

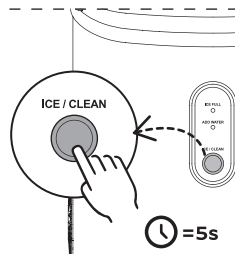
1

Remove the basket and add water up to the "MAX" water level.

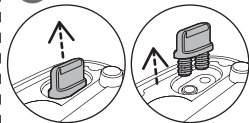


2

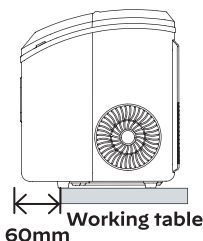
**In Standby Mode**  
Hold for 5 sec to start self-cleaning.



3 Drain Plug



Drain excess water over sink.



4

Clean exterior with cloth and mild dishwashing soap.



## **DO's & DON'Ts while cleaning and maintaining**

- **Do not** use organic solvent, boiled water, detergent, strong acid and strong alkali etc. for cleaning.
- When the unit is not to be used for a long duration, **drain** the water completely & dry the interior.
- **Store** in a well ventilated area.

## PRODUCT SPECIFICATIONS

<b>Model</b>	SLIM17B/SLIM17G1/ SLIM17G	SLIM17T
<b>Voltage/Frequency</b>	115V/60Hz	115V/60Hz
<b>Ice-making Current</b>	2.7A	2.7A
<b>Water Reservoir</b>	1.1L	1.1L
<b>Ice Basket Capacity</b>	1.76 lbs (0.8KG)	1.76 lbs (0.8KG)
<b>Ice-making Rate</b>	33 lbs per day	33 lbs per day
<b>Ice Shape</b>	Nugget	Nugget
<b>Material</b>	ABS, PP	ABS, PP, Stainless Steel
<b>Net Weight</b>	17.6 lbs (8KG)	17.6 lbs (8KG)
<b>Product Size</b>	11.3 x 8.66 x 12.68 inch (287 x 220 x 322mm)	11.3 x 8.66 x 12.68 inch (287 x 220 x 323mm)

# TROUBLESHOOTING

<b>Problem</b>	<b>Possible Causes</b>	<b>Solution</b>
<b>“ADD WATER” light is on.</b>	Low water level or not enough water.	Stop making ice, refill water, press “ICE/CLEAN”, then restart and try again.
<b>“ICE FULL” light is on.</b>	There is too much ice.	Remove some ice.
	If there are no ice cubes, there may be an obstruction or the inner wall needs cleaning.	Remove the obstruction inside or clean the inner wall of the ice storage.
<b>Ring indicator light flashes in red.</b>	The ambient temperature or the water temperature in the inner tank is too high.	Please run the ice maker when the ambient temperature is below 90°F and pour colder water into the tank.
	Refrigerant liquid leakage.	Press the ICE button twice to restart the ice-making program. If this problem shows up again. Please contact the customer service.
	The cover motor is broken.	
	The pipe in the cooling system is blocked.	
<b>Making Ice too slowly.</b>	Hot air outlet has been blocked by something.	Hot air outlet must be guaranteed to have more than 5.9 inches of ventilation distance.
	The water temperature in the inner tank is too high.	Water temperature requirement between 7°C - 32°C.
	Refrigeration system malfunctions.	Please contact customer service.

<b>Problem</b>	<b>Possible Causes</b>	<b>Solution</b>
<b>Water leakage.</b>	The drain plug is not in place.	Put the drain plug in place.
	Pipe joints in the appliance may loose.	Please contact customer service.
	The seal has reached the end of its service life.	

## **SHORT AND LONG-TERM WARRANTY INFORMATION**

### **30-DAY LIMITED WARRANTY**

To provide customers with a quality shopping and user experience, the unit can be replaced or returned for a full refund within the 30-day period from the date of purchase.

### **30-DAY TO 1-YEAR LIMITED WARRANTY**

After the 30-day warranty has expired, Silonn automatically activates a 1-year warranty from the date of purchase that covers product replacement.

### **30-DAY TO 1-YEAR WARRANTY LIMITATIONS**

This warranty does not cover:

- Any condition resulting from incorrect or inadequate maintenance or care.
- Damage resulting from misuse, abuse, negligence, accidents, or shipping damage.
- Dissatisfaction due to buyer's remorse.
- Normal wear and tear.
- Damages incurred after initial transportation.