

# Sanitaire® HydroClean™

EN  
ES  
FR

USER GUIDE  
Commercial Hard Floor Washer  
Model SC930

Important safety instructions . . . . .	2
What's in the carton . . . . .	3
How to identify parts . . . . .	4
How to assemble . . . . .	5
Cleaning and sanitizing formulas . . . . .	5
Filling the solution tank . . . . .	6
Cleaning hard floors . . . . .	7
Maintenance: Dirty water tank . . . . .	8-9
Maintenance: Self-cleaning function . . . . .	10
Maintenance: Electronic alerts . . . . .	11
Maintenance: Brush roll and chamber . . . . .	12
Troubleshooting . . . . .	13
Warranty and service information . . . . .	14
Spanish user guide . . . . .	15-28
French user guide . . . . .	29-42
How to order replacement parts . . . . .	43



# IMPORTANT SAFETY INSTRUCTIONS

## READ ALL INSTRUCTIONS BEFORE USING YOUR HARD FLOOR WASHER

When using an electrical appliance, basic precautions should be observed, including the following:



### WARNING TO REDUCE THE RISK OF FIRE, ELECTRIC SHOCK OR INJURY:

- Connect to a properly grounded outlet only. See grounding instructions. Do not modify the 3-prong grounded plug.
- Do not leave appliance when it is plugged in. Unplug from outlet when not in use and before servicing.
- Use indoors only.
- Do not allow to be used as a toy. Close attention is necessary when used by or near children.
- Do not use for any purpose other than described in this User's Guide. Use only manufacturer's recommended attachments.
- Do not use with damaged cord or plug. If appliance is not working as it should, or has been dropped, damaged, left outdoors, or dropped into water, have it repaired at an authorized service center.
- Do not pull or carry by cord, use cord as a handle, close a door on cord, or pull cord around sharp edges or corners. Do not run appliance over cord. Keep cord away from heated surfaces.
- Do not unplug by pulling on cord. To unplug, grasp the plug, not the cord.
- Do not handle plug or appliance with wet hands.
- Do not put any object into openings. Do not use with any opening blocked; keep openings free of dust, lint, hair, and anything that may reduce air flow.
- Keep hair, loose clothing, fingers, and all parts of body away from openings and moving parts.
- Turn off all controls before plugging or unplugging appliance.
- Use extra care when cleaning on stairs.
- Do not use to pick up flammable or combustible materials (lighter fluid, gasoline, kerosene, etc.) or use in areas where they may be present.
- Do not use appliance in an enclosed space filled with vapors given off by oil base paint, paint thinner, some moth proofing substances, flammable dust, or other explosive or toxic vapors.
- Do not use to pick up toxic material (chlorine bleach, ammonia, drain cleaner, etc.).
- Do not pick up anything that is burning or smoking, such as cigarettes, matches, or hot ashes.
- Use only cleaning products recommended for use with this appliance to prevent internal component damage. See the Cleaning and Sanitizing Formulas section of this guide.
- Do not immerse. Use only on surfaces moistened by the cleaning process.
- Keep appliance on a level surface.
- Always install float before any wet pick-up operation.
- Do not carry the appliance while in use.
- Do not use without filter in place.
- Plastic film can be dangerous. To avoid danger of suffocation, keep away from children.
- Do not use extension cords or outlets with inadequate current carrying capacity.

## SAVE THESE INSTRUCTIONS

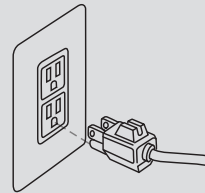
THIS MODEL IS FOR COMMERCIAL USE

### WARNING

Improper connection of the equipment-grounding conductor can result in a risk of electrical shock. Check with a qualified electrician or service person if you aren't sure if the outlet is properly grounded. DO NOT MODIFY THE PLUG. If it will not fit the outlet, have a proper outlet installed by a qualified electrician. This appliance is designed for use on a nominal 120-volt circuit, and has a grounding attachment plug that looks like the plug in the drawing to the right. Make certain that the appliance is connected to an outlet having the same configuration as the plug. No plug adapter should be used with this appliance.

### GROUNDING INSTRUCTIONS

This appliance must be connected to a grounded wiring system. If it should malfunction or break down, grounding provides a safe path of least resistance for electrical current, reducing the risk of electrical shock. The cord for this appliance has an equipment-grounding conductor and a grounding plug. It must only be plugged into an outlet that is properly installed and grounded in accordance with all local codes and ordinances.

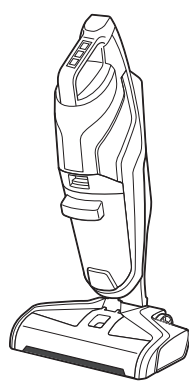


## WHAT'S IN THE CARTON

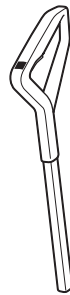
**⚠ WARNING**  
 Plastic film can be dangerous. To avoid danger of suffocation, keep away from babies and children.

**⚠ WARNING**  
 Do not plug in the Sanitaire® Floor Washer until you are familiar with all instructions and operating procedures.

**⚠ WARNING**  
 To reduce the risk of electric shock, turn power switch off and disconnect plug from electrical outlet before performing maintenance or troubleshooting checks.



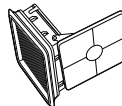
Body



Handle grip



Extension cord



Filter



Multi-surface brush roll

### Extension cords

When using an extension cord with your unit, refer to the following table to determine the required A.W.G. wire size. Make sure extension cord is in good condition and correct size. Use only three-wire extension cords that have three-prong grounding plugs and grounding receptacles that accept the appliance's plug.

	Length of extension cord			
	25 feet	50 feet	100 feet	150 feet
110V-120V	7.5 meter	15.25 meter	30.5 meter	45.7 meter
Amps	A.W.G. wire size			
0-6	18	16	16	14
7-10	18	16	16	14

**WARNING:** To reduce the risk of personal injury due to a loose electrical connection

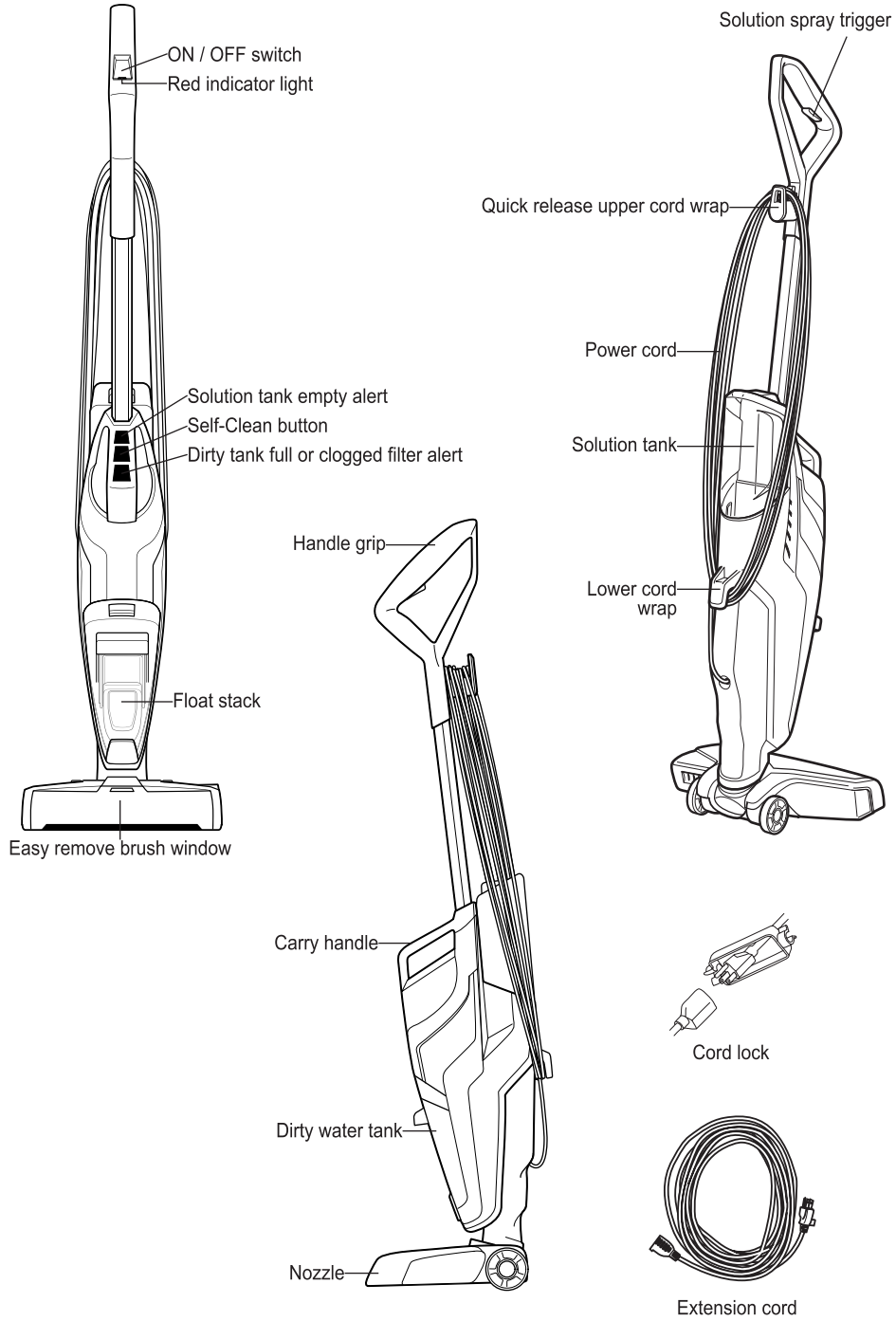
between the appliance's plug and extension cord, firmly and fully attach the appliance plug to the extension cord.

Periodically check the connection while operating to ensure it is fully attached. Do not use an extension cord that provides a loose connection. A loose connection may result in overheating, fire, and increases the risk of a burning.

To reduce the risk of disconnection of the appliance cord from the extension cord during operating, secure the extension cord to the appliance plug using the cord lock as shown in the assembly instructions.

**Maintain appliance with care** – Inspect extension cords periodically and replace if damaged.

# HOW TO IDENTIFY PARTS

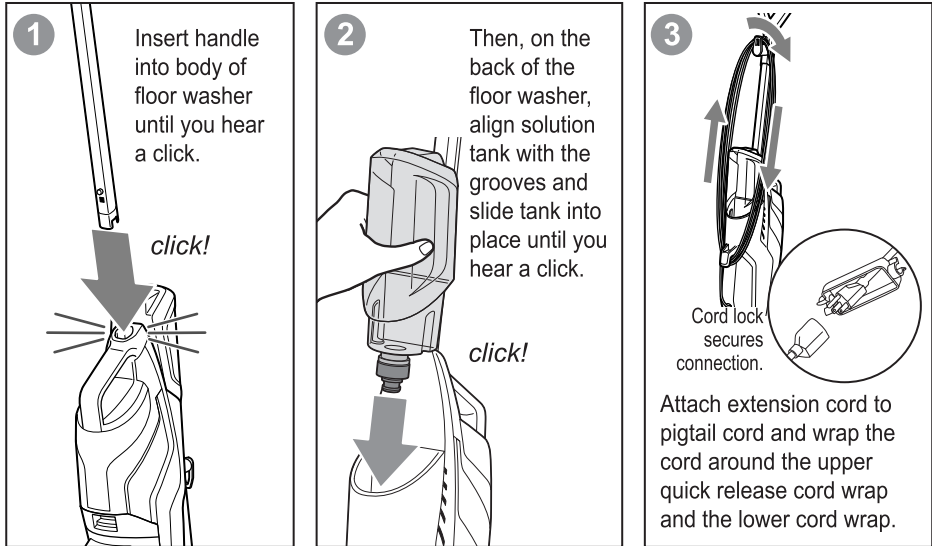


## HOW TO ASSEMBLE

The Sanitaire® Hard Floor Washer comes in four easy to assemble components and does not require any tools to assemble:

- Handle • Body • Solution tank • Extension cord

**⚠ WARNING**  
Do not plug in the Sanitaire® Hard Floor Washer until you are familiar with all instructions and operating procedures.



**NOTE:** To easily unwrap the cord for use, turn the quick release cord wrap downward to remove the cord from the cord wrap.

## CLEANING & SANITIZING FORMULAS

**⚠ WARNING**  
To reduce the risk of fire and electric shock due to internal component damage, use only recommended cleaning formulas intended for use with the floor washer.

**Recommended Sanitaire® formulas** – For a list of additional recommended formulas from other brands go to the **Sanitaire® HydroClean™ Hard Floor Washer** page on [www.sanitairecommercial.com](http://www.sanitairecommercial.com). Always use recommended formulas in your floor washer. Other solutions may harm the machine and void the warranty.

### Cleaning formula

	<b>Sanitaire® Hard Floor Cleaner</b>
	<b>For cleaning ALL sealed floors</b>
	Item no. 3135

### Sanitizing formula

	<b>Bissell® Hard Floor Sanitize</b>
	<b>For sanitizing ALL sealed floors</b>
	Item no. 2504L

## FILLING THE SOLUTION TANK

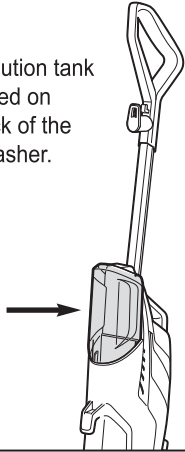


### WARNING

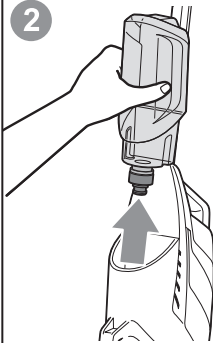
Fill with warm (140°F/60°C MAX) tap water and add the recommended formula.  
**DO NOT USE BOILING WATER. DO NOT HEAT WATER OR TANK IN MICROWAVE.**

1

The solution tank is located on the back of the floor washer.

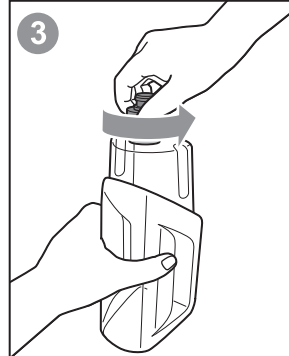


2



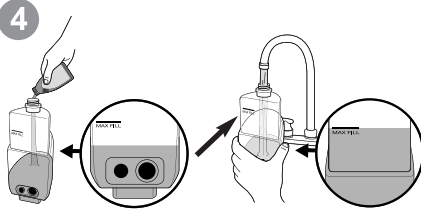
Lift the solution tank straight up to remove from the floor washer.

3



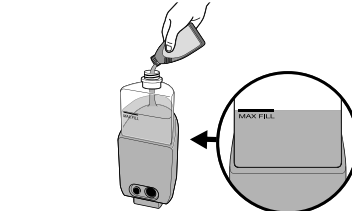
Unscrew the cap from the solution tank.

4



#### Only for Sanitaire solution:

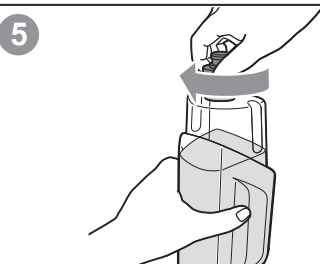
1. Fill solution tank with 5 ounces of Sanitaire cleaning or sanitizing solutions.
2. Fill the remainder of the solution tank with warm tap water to Maximum Fill Line. (Water to solution ratio = 6:1)



#### For other recommended solutions:

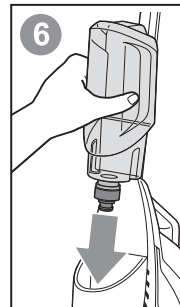
1. Fill solution tank with "ready to use" (pre-diluted) formula to Maximum Fill Line.
2. Follow manufacturers recommended solution ratio for cleaning and sanitizing hard floors.

5



Screw the cap back onto the solution tank.

6



On the back of the floor washer, align solution tank with the grooves and slide tank into place until you hear a click.

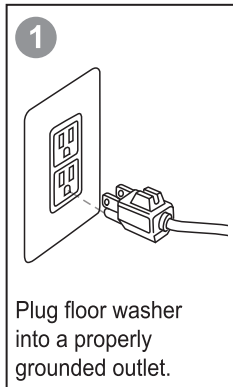
*click!*

## CLEANING HARD FLOORS

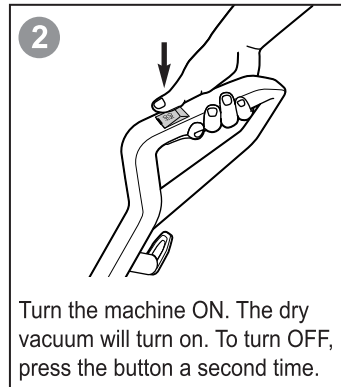


### WARNING

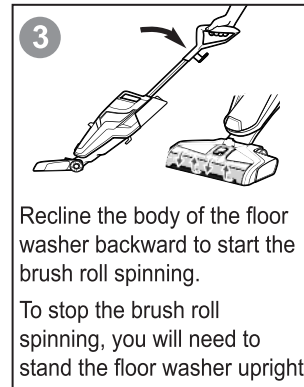
Do not plug in the Sanitaire® Hard Floor Washer until you are familiar with all instructions and operating procedures.



Plug floor washer into a properly grounded outlet.

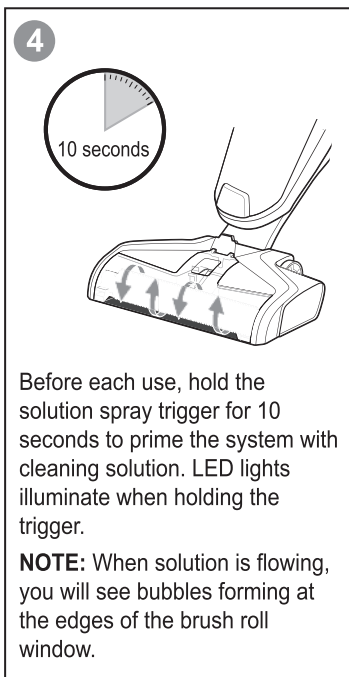


Turn the machine ON. The dry vacuum will turn on. To turn OFF, press the button a second time.



Recline the body of the floor washer backward to start the brush roll spinning.

To stop the brush roll spinning, you will need to stand the floor washer upright.

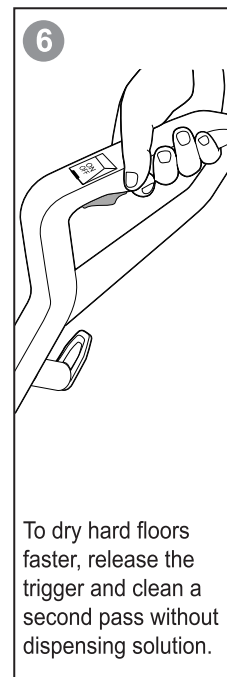


Before each use, hold the solution spray trigger for 10 seconds to prime the system with cleaning solution. LED lights illuminate when holding the trigger.

**NOTE:** When solution is flowing, you will see bubbles forming at the edges of the brush roll window.



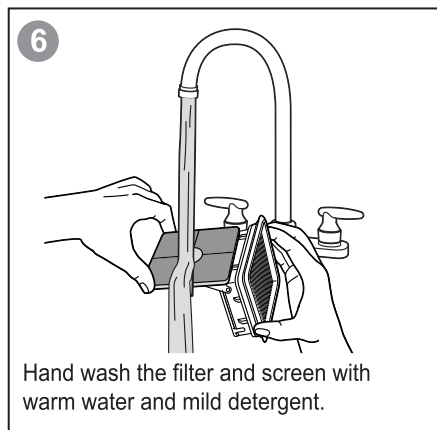
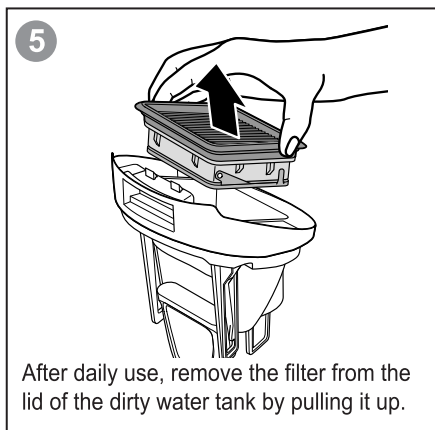
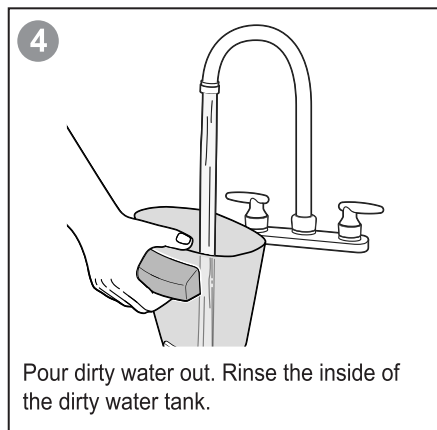
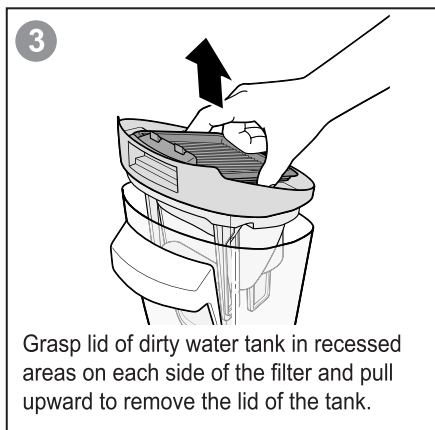
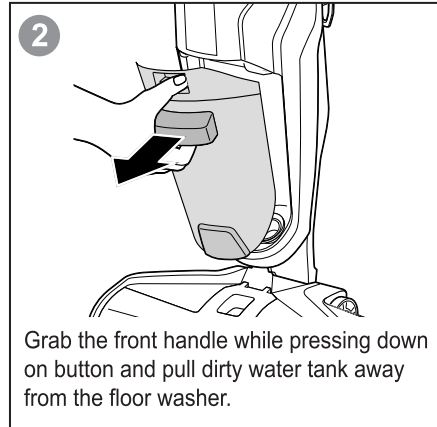
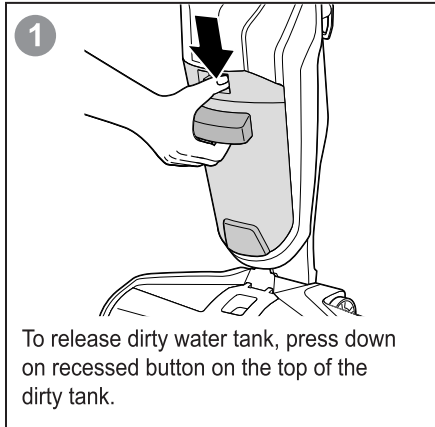
To clean, hold the solution spray trigger to apply solution on both forward and backward passes.

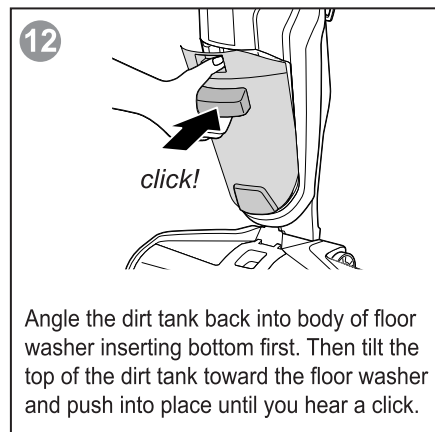
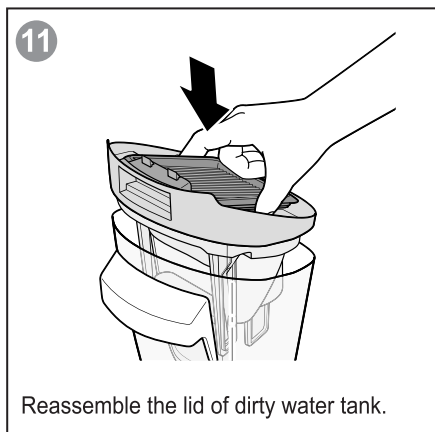
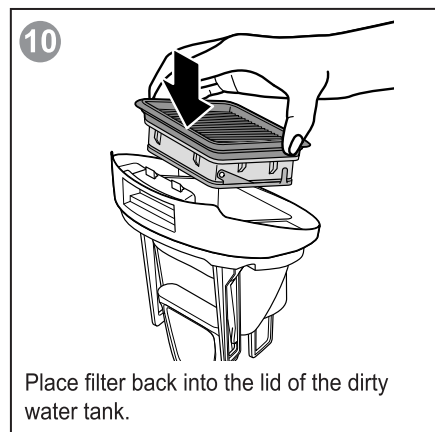
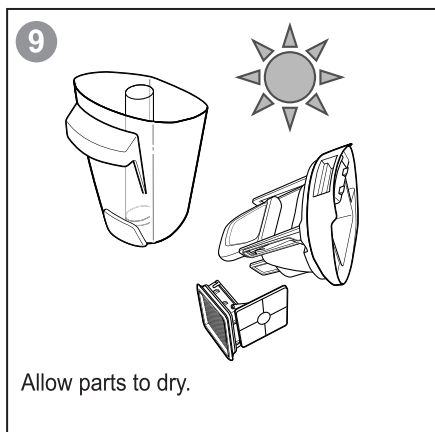
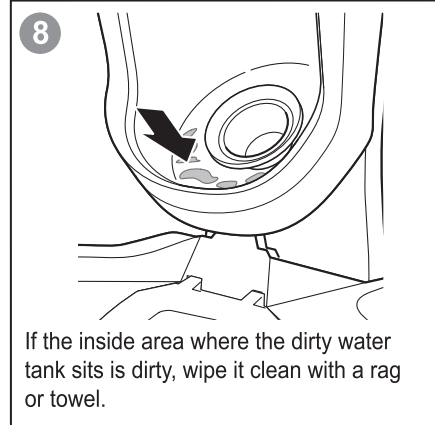
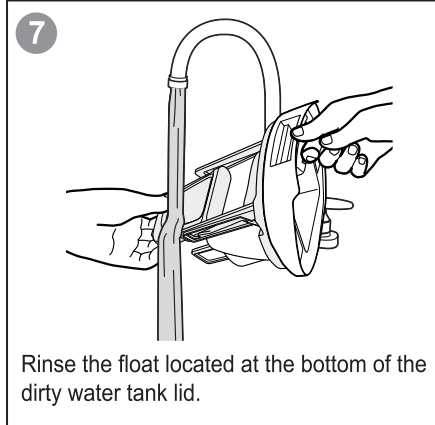


To dry hard floors faster, release the trigger and clean a second pass without dispensing solution.

**TIP:** For overly challenging and stuck-on messes on your hard floors, hold the Sanitaire® Hard Floor Washer over the mess. Using short passes while holding the trigger allows the multi-surface brush to go to work.

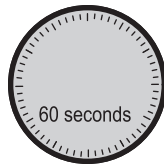
## MAINTENANCE: DIRTY WATER TANK



**MAINTENANCE: DIRTY WATER TANK (cont.)**

## MAINTENANCE: SELF-CLEANING FUNCTION

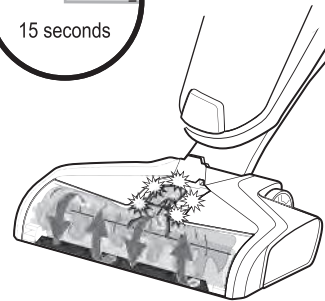
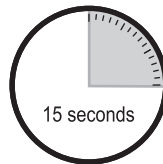
1



### Self-cleaning indicator

After use, turn power OFF, place the handle in upright position and depress the self-clean button. The indicator light will blink for 60 seconds while clean solution is dispensed on the brush roll and vacuumed back into the dirty water tank. Floor washer will shut off when cycle is complete. Repeat as necessary. Empty dirty water tank when finished.

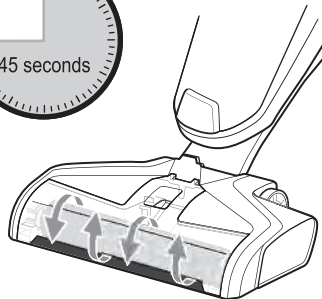
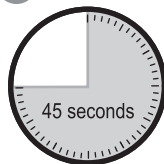
2



### 15 second wash cycle

Pump activation lights ON. Solution will flow on brush roll.

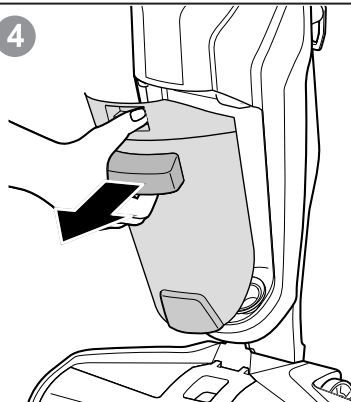
3



### 45 second dry cycle

Pump activation lights OFF. No solution flowing on brush roll.

4



### Empty dirty water tank

SEE MAINTENANCE: DIRTY WATER TANK, pages 8-9.

**NOTE:** Store floor washer in a protected, dry area. Since this product uses water, it must not be stored where there is a danger of freezing. **FREEZING WILL DAMAGE INTERNAL COMPONENTS AND VOID THE WARRANTY.**


## MAINTENANCE: ELECTRONIC ALERTS

Indicator lights to alert when dirty water tank is full, filter is clogged, solution tank is empty and improper installation of the filter or brush roll.

**1**

**Dirty water tank full indicators**


When dirty water tank is FULL, the full tank indicator located on carry handle will start blinking, then change to a solid amber color and floor washer will shut off. Go to MAINTENANCE: DIRTY WATER TANK, pages 8-9.



**2**

**Empty solution tank indicators**


When the solution tank is EMPTY, the empty solution tank indicator located on carry handle will start blinking, then change to a solid amber color. Turn floor washer off. Go to FILLING THE SOLUTION TANK, page 6.



**3**

**Incorrect or missing filter indicators**

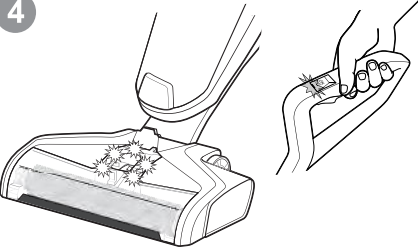
If filter is missing, incorrectly aligned or not a genuine Sanitaire replacement, the full tank indicator located on carry handle will start blinking, then change to a solid amber color and floor washer will not turn on.



**4**

**Incorrect or missing brush roll indicators**

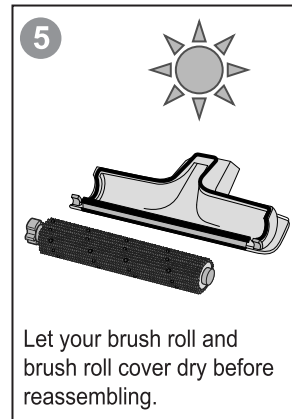
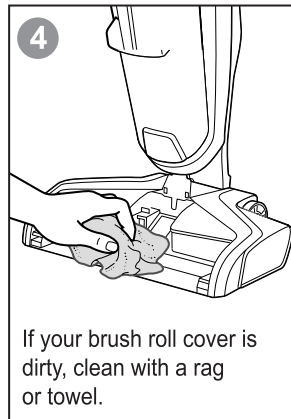
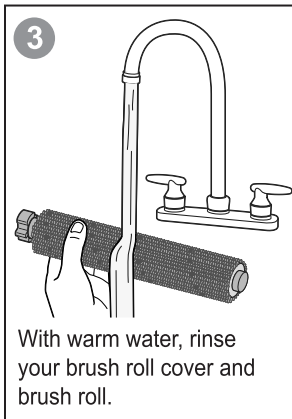
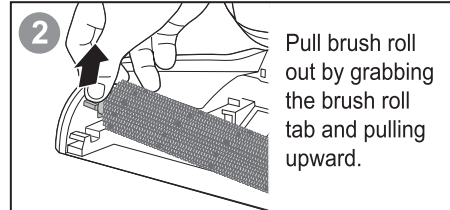
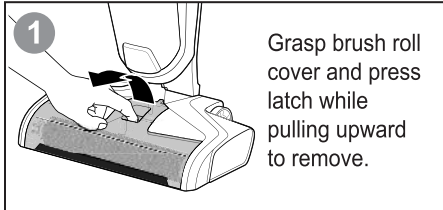
If brush roll is missing, incorrectly aligned or not a genuine Sanitaire replacement, the pump activation lights located in the nozzle will start blinking then change to solid white. A red indicator light will light on handle and floor washer will not turn on.



## MAINTENANCE: BRUSH ROLL AND CHAMBER

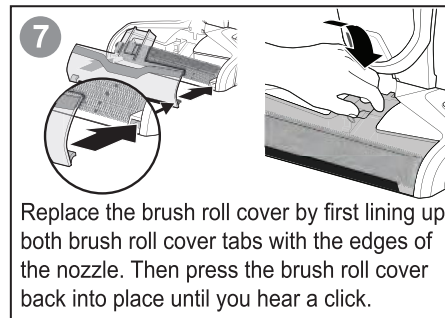
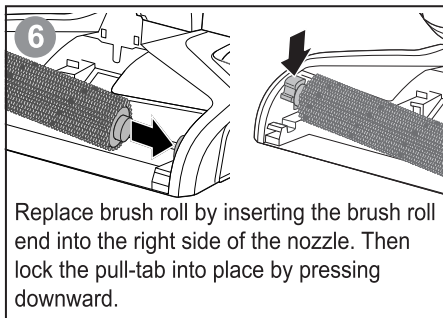
### WARNING

Brush may start unexpectedly. To reduce the risk of injury from moving parts, turn power OFF and unplug floor washer before cleaning or troubleshooting.



**TIP:** Running your floor washer with a wet brush roll will help the brush roll dry faster. The trigger should not be pressed.

**NOTE:** The brush roll is not dishwasher or automatic washing machine safe. Please follow cleaning instructions.



## TROUBLESHOOTING

### **WARNING**

To reduce the risk of fire, electric shock or injury, turn power OFF and disconnect plug from electrical outlet before performing maintenance or troubleshooting.

Problem	Possible causes	Remedies
<b>Reduced spray OR no spray</b>	Solution tank may be empty.	Refill tank.
	Solution tank may not be seated completely.	Turn power OFF / Remove and reseal tank.
	System isn't completely primed.	Hold trigger for 10 to 15 seconds. If no spray after 15 seconds, turn power OFF, unplug power cord, then plug back in. Turn power ON and repeat holding trigger for 10 seconds.
	Brush window is not latched in place.	Turn power OFF / Unplug floor washer and re-install brush window.
	Not holding trigger to spray solution.	Hold trigger continuously while using the floor washer.
	Spray tips on nozzle clogged.	Use a paper clip to clean the spray tips located underneath the brush roll window.
<b>Loss of suction power</b>	Tanks may not be seated properly.	Turn Power OFF / Remove both tanks and reseal them so they fit properly.
	Dirty tank has picked up maximum amount of dirty water and has reached full line.	Empty dirty tank and make sure to make slow cleaning passes back and forth while cleaning.
	Brush cover is not latched in place.	Turn Power OFF / Unplug floor washer and re-install brush cover.
	Debris channel in nozzle is clogged.	Clean the channel with a paper towel.
	Filter clogged by debris.	Remove debris clogging the filter screen and clean the filter.
<b>Brush roll is not turning</b>	Brush roll is not installed properly.	Turn Power OFF / Unplug floor washer and follow instructions on page 12 for replacing brush roll.
	Floor washer is standing upright.	Recline floor washer to make brush roll turn on.
	Obstruction has caused brush roll to stop.	Turn Power OFF / Unplug floor washer and remove brush window and brush roll cleaning hair and string off of brush ends.
	Obstruction has caused brush roll to stop and shut down floor washer.	Unplug floor washer to reset the system. While the machine is unplugged, remove the brush cover and brush roll cleaning hair and string off of brush ends.
<b>Floor washer won't turn on</b>	Handle not inserted properly into body of floor washer.	Remove the handle and re-insert into the body of the floor washer making sure to push down until you hear a "click."
	Brush roll is missing, misaligned or not a genuine Sanitaire replacement.	Make sure genuine Sanitaire brush roll is properly installed.
	Filter is missing, misaligned or not a genuine Sanitaire replacement.	Make sure genuine Sanitaire filter is properly installed.
	Dirty tank is full.	Empty tank.
	Filter is clogged.	Clean or replace filter.
<b>Floor washer is leaking</b>	Cap of clean water tank is not closed properly.	Remove the clean water tank and re-apply the cap.
<b>Floor washer is streaking</b>	Too much water applied.	Go over area without spraying down water.
	Previous floor care products used.	Contact product manufacturer regarding how to remove.
<b>Floor washer is not drying floor</b>	Brush roll cover not on tight.	Remove brush roll cover and reattach making sure latch clicks in place.
	Filter is clogged.	Remove filter and clean thoroughly. See EMPTY DIRTY WATER.
	Continuous use with solution trigger depressed.	Release solution trigger and use an additional forward and reverse stroke over area cleaned.

## WARRANTY

This warranty gives you specific legal rights, and you may also have other rights which may vary from state to state. If you need additional instruction regarding this warranty or have questions regarding what it may cover, please contact Sanitaire® Customer Service by E-mail, telephone or regular mail as described below.

### Limited Two-Year Warranty

Subject to the \*EXCEPTIONS AND EXCLUSIONS identified below, upon receipt of the product Sanitaire will repair or replace (with new, refurbished, lightly used, or remanufactured components or products), at Sanitaire's option, free of charge from the date of purchase by the original purchaser, for two years any defective or malfunctioning part.

See information below on "If your Sanitaire product should require service". This warranty does not apply to fans or routine maintenance components such as filters, belts or brushes. Damage or malfunction caused by negligence, abuse, neglect, unauthorized repair, or any other use not in accordance with the user guide is not covered.

**Some states do not allow the exclusion or limitation of incidental or consequential damages, so the above limitation or exclusion may not apply to you.**

### \*EXCEPTIONS AND EXCLUSIONS FROM THE TERMS OF THE LIMITED WARRANTY

THIS WARRANTY IS EXCLUSIVE AND IN LIEU OF ANY OTHER WARRANTIES, EITHER ORAL OR WRITTEN. ANY IMPLIED WARRANTIES WHICH MAY ARISE BY OPERATION OF LAW, INCLUDING THE IMPLIED WARRANTIES OF MERCHANTABILITY AND FITNESS FOR A PARTICULAR PURPOSE, ARE LIMITED TO THE TWO-YEAR DURATION FROM THE DATE OF PURCHASE AS DESCRIBED ABOVE.

Some states do not allow limitations on how long an implied warranty last so the above limitation may not apply to you.

**NOTE:** Please keep your original sales receipt. It provides proof of date of purchase in the event of a warranty claim.

## SERVICE INFORMATION

### If your Sanitaire product should require service

You will find the nearest Sanitaire Authorized Service Center in your area online at [sanitairecommercial.com](http://sanitairecommercial.com) under service locator or contact Sanitaire Customer Service.

If you need information about repairs or replacement parts, or if you have questions about your warranty, contact Sanitaire Customer Service.

#### Website:

[www.sanitairecommercial.com](http://www.sanitairecommercial.com)

#### Call:

Sanitaire Customer Service  
1-800-800-8975