



Text 1-812-652-2525  
(US and Canada only, carrier fees may apply)



Visit [www.maxicosi.com](http://www.maxicosi.com)



Call 1-800-544-1108



Email [support@djgusa.com](mailto:support@djgusa.com)



Learn More

©2025 Dorel Juvenile Group, Inc. (800) 544-1108 [www.maxicosi.com](http://www.maxicosi.com). Styles, colors, and labeling may vary. Made in CHINA. Distributed by Dorel Juvenile Group, Inc., 2525 State St., Columbus, IN 47201-7494. Dorel Juvenile Canada, 2233 Argentia Road, Suite 110, Mississauga, ON L5N 2X7. Representante exclusivo en Chile: DOREL JUVENILE CHILE S.A. Av. del Parque 4161, oficina 602 A, Huechuraba, Santiago, Chile - Fono: 56 2 24971500 - [www.infanti.cl](http://www.infanti.cl) - [www.dorel.cl](http://www.dorel.cl). Importado y distribuido en Perú por: COMEXA COMERCIALIZADORA EXTRANJERA S.A. SUCURSAL DEL PERÚ - Los Libertadores 455, San Isidro, Lima 27, Lima, Perú RUC 20431062870 - Fono: 4413029 - [www.infanti.com.pe](http://www.infanti.com.pe). En Centro América, Caribe y Ecuador por: Best Brands Group S.A. - Av. Balboa, Bay Mall Plaza, Planta Baja, local 9, Panamá. - Fono: (507) 300 2884. En Colombia por: Baby Universe S.A.S. - Vía 40 No. 77-29, Barranquilla, Colombia - Fono: (575) 353 1110 Importador: DJGM, S.A. DE C.V. Gabriel Mancera 1041 Col. Del Valle, Benito Juárez C.P. 03100 México, Ciudad de México R.F.C. DJG140305GN9 Tel. (55) 67199202



**MAXI-COSI®**

## Sabine Motorized Bassinet

BT136



4358-8790 01.08.26



## Table of Contents

Parts List.....	6
Assembly .....	8
Navigating the Touch Panel .....	12
Care and Maintenance.....	16
Warranty .....	18
FCC Statement.....	19

For indoor use only. Suitable for infants up to 20 lb (9.1 kg).

Read all instructions before assembly and use of product. Keep instructions for future reference.

### **WARNING**

Failure to follow these warnings and the instructions could result in serious injury or death.

## **SUFFOCATION HAZARD** Babies have suffocated:

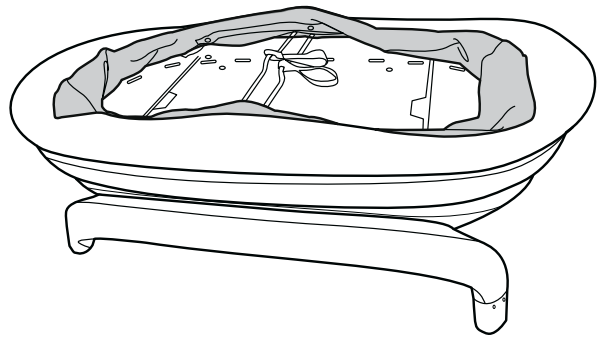
- on pillows, comforters, and extra padding
- In gaps between a wrong size mattress, or extra padding and product sides
- **NEVER** add soft bedding or padding
- Use **ONLY** mattress provided by the manufacturer
- Always place baby on back to sleep to reduce the risk of SIDS and suffocation.

**FALL HAZARD**—To help prevent falls, **DO NOT** use this product when the infant begins to push up on hands and knees or has reached 20 lb (9.1 kg), whichever comes first.

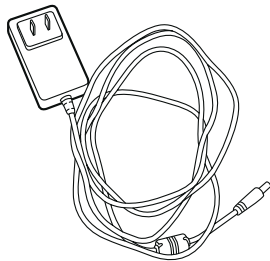
- If a sheet is used with the pad, use only the one provided by the product manufacturer or one specifically designed to fit the dimension of the product mattress.
- **Strings can cause strangulation! DO NOT** place items with a string around a child's neck, such as hood strings or pacifier cords. **DO NOT** suspend strings over a product or attach strings to toys.
- **DO NOT** use if any part of the bassinet is broken, torn, or missing. Contact Consumer Care for replacement parts and instructional literature if needed.
- To reduce the risk of fire or electrical shock, **DO NOT** expose this product to water or moisture.
- This monitor function is not intended to be used as a medical monitor and its use should not replace proper adult/parental supervision. You should check your child's activity at regular intervals as this monitor will not alert parents to the silent activities of a child.
- **NEVER** attempt to disassemble the product. This is dangerous and will void the warranty.
- Test monitor function periodically when in use and changing locations.
- Use only the adapter supplied with this product. Incorrect adapter polarity or voltage can seriously damage the product.
- To prevent entanglement and overheating, **DO NOT** use extension cords.
- The adapter and device may become slightly warm to the touch during operation. This is normal.
- **ALWAYS** unplug the AC adapter from the wall during extended periods of non-use.

- Check to make sure wall outlet plates are not unusually hot to the touch. If they are, immediately unplug cords from these outlets.
- Check that all outlet connections are in good condition so that adapter is not loose or that no wiring is exposed. Have a qualified, licensed electrician check the wiring as soon as possible.
- **DO NOT** place adapter/wall plug under a window where a child might use it to step on and/or to reach something that might be dangerous.

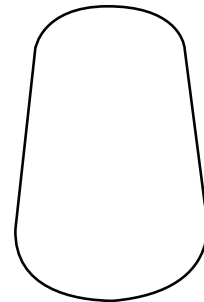
## Parts List



Bassinet basket



Power cord



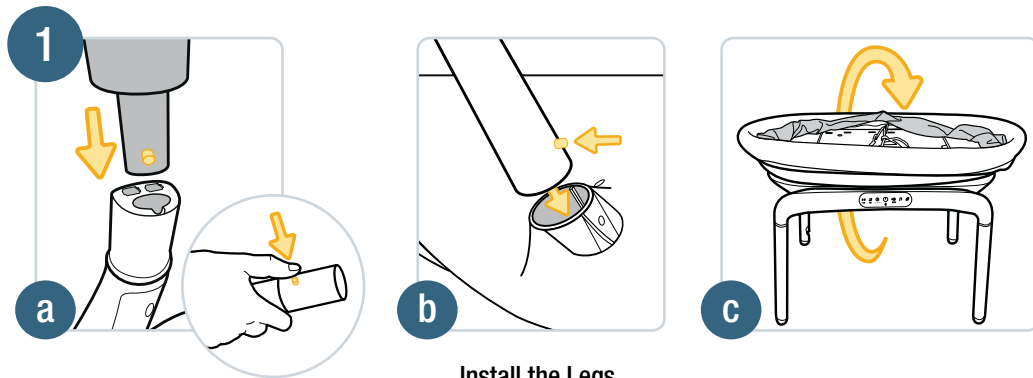
Mattress pad and cover



Legs (including leg with electrical plug)

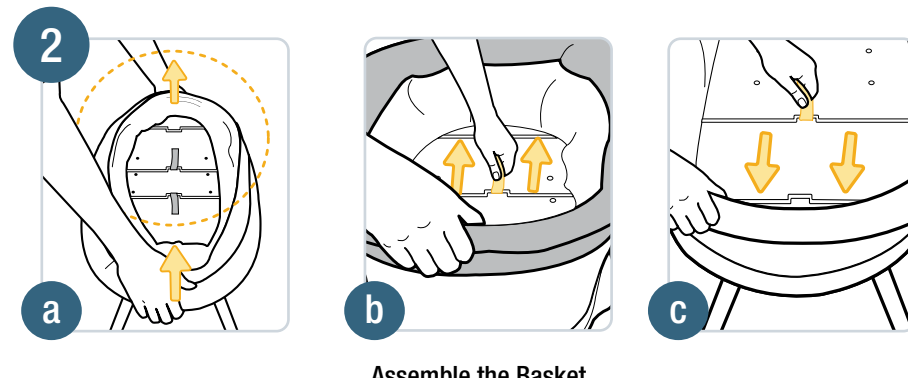
Lay out and identify all the parts. Adult assembly required. No tools required.

## Assembly



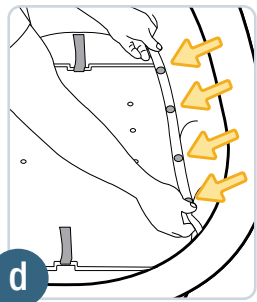
### Install the Legs

- On a flat, clean surface, turn the bassinet upside down. Press in the pin on the leg with the electric plug while inserting it into the leg opening with the metal extension until the pin clicks into position. Pull gently on the leg to make sure it is attached securely.
- Repeat this process to insert the other three legs in any of the three remaining leg openings.
- Once all four legs are in place, turn the bassinet right side up.

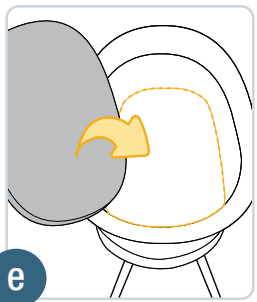


### Assemble the Basket

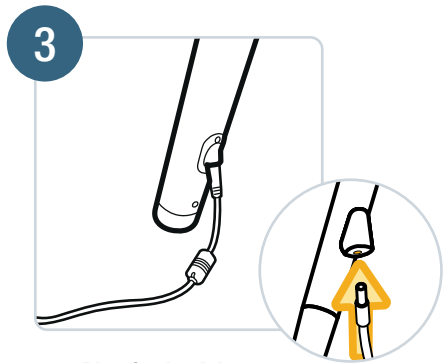
- Lift the rim of the bassinet up with both hands.
- While holding the rim with one hand, pull one tab toward the end of the bassinet with the other hand until the bar enters the slot.
- Repeat this process with the other tab. Confirm that both tabs are securely in place by pushing the rim down and ensuring the bassinet does not collapse.



d. On each side of the bassinet, snap the bottom of the mesh sides to the base.



e. Place the mattress pad with cover into the bassinet.



### Plug in the Adapter

Insert the adapter into the leg with the electrical plug. Plug the power cord into a nearby wall outlet.



### Power adapter:

Input: 110 VAC 50/60 Hz

Output: 12 VDC 2A (Bassinet input)

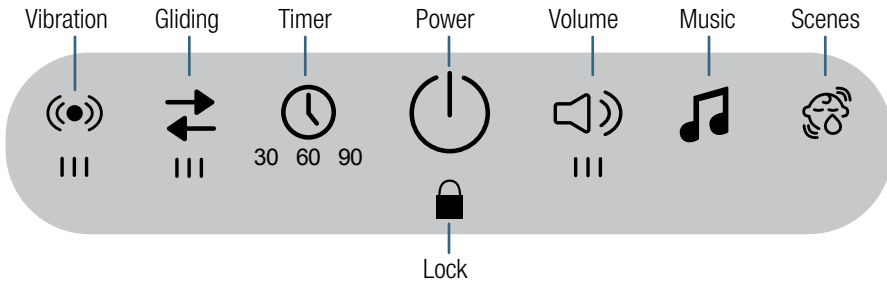
## ⚠ WARNING



### STRANGULATION HAZARD

- Children have **STRANGLED** in cords.
- Keep this cord out of the reach of children (more than 3 ft (0.9 m) away).

## Navigating the Touch Panel



### Power

When plugged in, the bassinet's Power icon will remain lit and all other icons will be dark when the bassinet is off. Tap the Power icon to turn the bassinet on. All other icons will light up when turned on.

Tap the Power icon again to turn the bassinet off. All functions will stop and the bassinet will automatically return to its default position.

**DO NOT** turn the bassinet off by unplugging it; unplug the power cord only after turning the bassinet off via the Power button.



### Lock

To lock the bassinet, tap and hold the Lock icon for five seconds. While locked, no other features of the bassinet can be changed. Gliding, vibration, volume, and music cannot be changed while the bassinet is locked. The power button is also disabled while the lock is active.

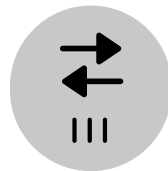
To unlock the bassinet, tap and hold the Lock icon for five seconds.



### Vibration

The bassinet has three levels of vibration, indicated by the three bars below the icon. Tap the Vibration icon once to start the vibration at the lowest level, then tap the icon again to raise the level.

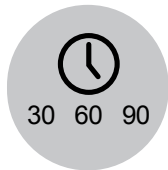
To stop the vibration, tap the Vibration icon when it is at its highest level (when all three bars are lit) or tap and hold the Vibration icon for two seconds.



### Gliding

The bassinet has three levels of gliding, indicated by the three bars below the icon. Tap the Gliding icon once to start the motion at the lowest level, then tap the icon again to raise the level.

To stop the gliding, tap the Gliding icon when it is at its highest level (when all three bars are lit) or tap and hold the Gliding icon for two seconds.



### Timer

When the bassinet is being used for gliding, vibration, and/or music, tap the Timer icon to set a timer for the bassinet to automatically turn off. Tap the Timer icon once to set a timer for 30 minutes, twice for 60 minutes, and three times for 90 minutes. The selected time will light up and blink for the duration.

To turn the timer off, tap the Timer icon when it is at its highest level (when set for 90 minutes) or tap and hold the Timer icon for two seconds.



### Volume and Music

Tap the Music icon to start playing one of five built-in sounds. Each tap of the Music icon will cycle through the five sound selections. The five built-in sounds are white noise, heavy rain, beach waves, classical melody, and soft piano. Tap and hold the Music icon for two seconds to turn it off.

While music is playing, tap the Volume icon to increase the volume. There are three levels of volume available.

To turn Volume and Music off, tap the Volume icon at its highest level (when all bars are lit) or tap and hold the Volume icon for two seconds.



### Cry Detection

Tap the Cry Detection icon to enable the cry detection feature. While active, this feature will initiate the lowest level of gliding and vibration if the bassinet detects one minute of sustained crying. If crying continues for one more minute, the speed or vibration will increase to max speed. If crying continues for a total of five minutes, all motions, vibrations, and sounds should stop.

Alternatively, you can store a specific set of settings, referred to as a 'scene', to automatically play when the Cry Detection icon is tapped. To set a scene, select the desired level of gliding, vibration, and music. Tap and hold the Cry Detection icon for three seconds while these settings are enabled to save these settings as a scene. A chime will sound to confirm the scene has been saved. When a scene has been set, it will play automatically if sustained crying is detected. To delete the saved scene, tap and hold the Cry Detection icon for three seconds while the unit is not moving or playing any sounds.

## Care and Maintenance

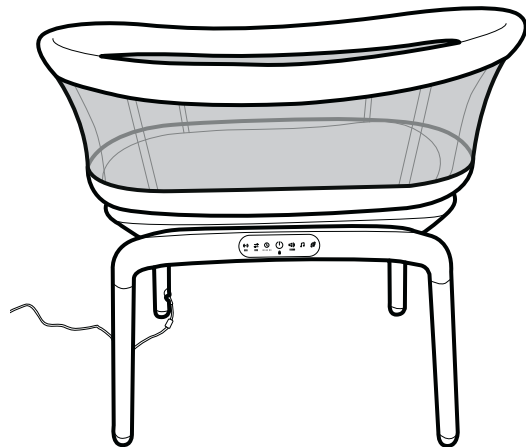
### Cleaning the Bassinet Basket

Unplug the power cord before spot cleaning. Spot clean only the fabric and base board using a damp cloth. **DO NOT** use harsh cleaning products.

### Cleaning the Bassinet Base

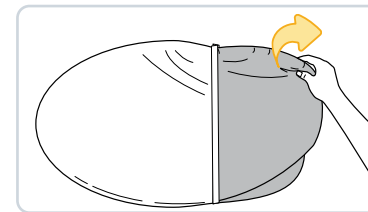
Clean with a slightly damp cloth or with an anti-static cloth. **ALWAYS** unplug the base from the electrical outlet before cleaning. **NEVER** use cleaning agents or abrasive solvents. **DO NOT** clean any part of the product with thinners or other solvents and chemicals—this may cause permanent damage to the part, which is not covered by the warranty. Keep product away from hot, humid areas or strong sunlight, and **DO NOT** let it get wet.

Every effort has been made to ensure high standards of reliability of your product. However, if something does go wrong, please do not try to repair it yourself—contact Consumer Care for assistance.



### Washing the Mattress Cover

Remove the cover from the mattress pad. Machine wash the pad on a cold, gentle cycle, then line dry.



### Replaceable Parts

- Bassinet legs (including leg with electrical plug)
- Power cord
- Mattress pad and cover

If a part is missing or damaged or you have any questions about this product, contact Consumer Care. Do not return to the place of purchase. Call 1-800-544-1108, text 1-812-652-2525, visit maxicosi.com, or email support@djgusa.com. Have the model number ready (BT136), the product serial number (found on the bassinet under the mattress pad), and a brief description of the part.

### Disposal

At the end of the product life cycle, you should not dispose of this product with normal household waste. Take this product to a collection point for the recycling of electronic equipment in accordance with your local laws. Some of the product materials can be reused if you take them to a recycling point. By reusing some parts or raw materials from used products, you make an important contribution to the protection of the environment.



Dorel Juvenile Group, Inc. warrants to the original purchaser that this product (Sabine Motorized Bassinet) is free from material and workmanship defects when used under normal conditions for a period of two (2) years from the date of purchase. Should the product contain defects in material or workmanship, Dorel Juvenile Group, Inc. will repair or replace the product, at our option, free of charge. Purchaser will be responsible for all costs associated with packaging and shipping the product to Dorel Juvenile Group Consumer Care Department at the address noted on back cover and all other freight or insurance costs associated with the return. Dorel Juvenile Group will bear the cost of shipping the repaired or replaced product to the purchaser. Product should be returned in its original package accompanied by a proof of purchase, either a sales receipt or other proof that the product is within the warranty period. This warranty is void if the owner repairs or modifies the product or the product has been damaged as a result of misuse. This warranty excludes any liability other than that expressly stated previously, including but not limited to, any incidental or consequential damages.

SOME STATES DO NOT ALLOW THE EXCLUSION OR LIMITATION OF INCIDENTAL OR CONSEQUENTIAL DAMAGES, SO THE ABOVE LIMITATION OR EXCLUSION MAY NOT APPLY TO YOU. THIS WARRANTY GIVES YOU SPECIFIC LEGAL RIGHTS, AND YOU MAY ALSO HAVE OTHER RIGHTS THAT MAY VARY FROM STATE TO STATE.

### IC Information

This device complies with Industry Canada license-exempt RSS standard(s). Operation is subject to the following two conditions: (1) this device may not cause interference, and (2) this device must accept any interference, including interference that may cause undesired operation of the device.

Under Industry Canada regulations, this radio transmitter may only operate using an antenna of a type and maximum (or lesser) gain approved for the transmitter by Industry Canada. To reduce potential radio interference to other users, the antenna type and its gain should be so chosen that the equivalent isotropically radiated power (e.i.r.p.) is not more than that necessary for successful communication. This Class B digital apparatus complies with Canadian ICES-003.

This device complies with part 15 of the FCC Rules. Operation is subject to the following two conditions:

1. This device may not cause harmful interference, and
2. This device must accept any interference received, including interference that may cause undesired operation.

### RADIO AND TELEVISION INTERFERENCE:

This equipment has been tested and found to comply with the limits for a Class B digital device, pursuant to part 15 of the FCC Rules. These limits are designed to provide reasonable protection against harmful interference in a residential installation. This equipment generates, uses and can radiate radio frequency energy and, if not installed and used in accordance with the instructions, may cause harmful interference to radio communications. However, there is no guarantee that interference will not occur in a particular installation. If this equipment does cause harmful interference to radio or television reception, which can be determined by turning the equipment off and on, the user is encouraged to try to correct the interference by one or more of the following measures:

1. Reorient or relocate the receiving antenna.
2. Increase the separation between the equipment and receiver.
3. Connect the equipment into an outlet on a circuit different from that to which the receiver is connected.
4. Consult the dealer or an experienced radio/TV technician for help.

**Note:** Changes or modifications not expressly approved by Dorel Juvenile Group can void your authority to operate this equipment under Federal Communications Commission's rules.

Use of other accessories may not ensure compliance with the FCC exposure guidelines.

FCC Radiation Exposure Statement: This equipment complies with FCC radiation exposure limits set forth for an uncontrolled environment. This transmitter must not be co-located or operating in conjunction with any other antenna or transmitter.