

Ice Maker



SLIM43



IMPORTANT SAFETY INFORMATION	01
PRODUCT INTRODUCTION	04
CONTROL PANEL INTRODUCTION	06
USING YOUR ICE MAKER	08
CLEANING AND MAINTENANCE	13
PRODUCT SPECIFICATIONS	16
TROUBLESHOOTING	17
WARRANTY INFORMATION	21

IMPORTANT SAFETY INFORMATION

To reduce the risk of injury or property damage, please follow these safety precautions.



WARNING



- Voltage power from outlet must match specifications on appliance nameplate.



- This appliance **must be** grounded.



- Using an extension cord may cause overheating and increase the risk of fire.

If an extension cord **MUST** be used:

- 1) **Only use an** extension cord with grounding plug.
- 2) The marked rating of an extension cord **must be** equal to or greater than the rating of this appliance.

- **Do not** operate if any component, including the cord or plug, is damaged.
- Unplug the unit before cleaning by hand.



- **Do not** use water that is micro-biologically unsafe or of unknown quality.



- **Do not** remove any safety, warning, or product information labels from the unit.



- **Do not** touch the evaporator with your hands while the ice maker is operating.

- **Do not** plug in or unplug the unit with wet hands.



- **Never** put flammable, explosive and corrosive articles into the ice maker.



- The unit **must be** placed and set up according to installation instructions before use. The unit is for indoor household use only.



- **Do not** store or use flammable vapors or liquids near the unit.
- **Do not** immerse any part of the unit in water.



- **Do not** attempt to disassemble, repair, modify or replace any part of the ice maker unless permitted by the manufacturer.



- This appliance is not intended for use by children, and persons with reduced physical, sensory or mental capabilities, or lack of experience and knowledge, unless they have been given supervision or instruction concerning use of the appliance by a person responsible for their safety.
- **Do not** place the power cord where it could be pulled by children or pose a tripping hazard.
- Children should not be left unattended near the ice maker during operation.
- Children should be supervised to ensure that they do not play with the appliance.
- Keep cartons, plastic bags, and any exterior wrapping material away from children to avoid the risk of suffocation.



WARNING

FIRE OR EXPLOSION HAZARD Flammable Refrigerant

This unit contains an isobutane refrigerant, also known as R600a, a natural gas with high environmental compatibility. However, it is also combustible. Adhere to the warnings below to reduce the risk of injury or property damage.

WARNING: When positioning the appliance, ensure the supply cord is not trapped or damaged.

WARNING: Do not locate multiple portable socket-outlets or portable power supplies at the rear of the appliance.



1. When handling, installing, and operating the unit, care should be taken to avoid damage to the refrigerant tubing.



2. Keep ventilation openings around the unit's enclosure clear of obstruction.



3. **Do not** place the unit near heat sources such as an oven.



4. Ensure a minimum of 6" of clearance around the side and back walls of the unit for proper air circulation.



5. **Do not** place the unit in direct sunlight.



6. Risk of fire or explosion. Flammable refrigerant used. **Do not** use mechanical devices to defrost the unit. Do not puncture or damage refrigerant tubing.



7. Only dispose of the unit according to Federal and Local Regulations. Contact your local authorities for the environmentally-safe disposal of the unit.

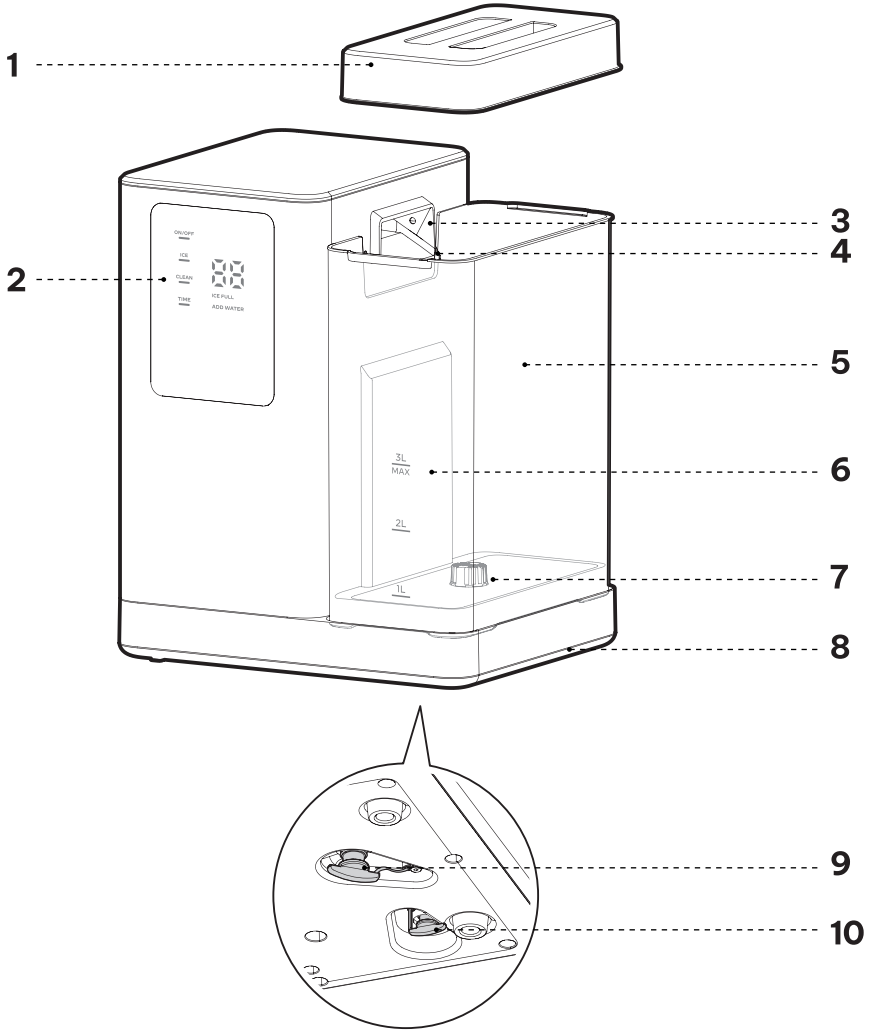


ATTENTION

- The ice maker parts should be replaced with parts that have the same specifications and the maintenance should be done by authorized service personnel, to minimize the risk of fire hazards due to incorrect parts or improper operation.
- The ice maker should be installed in accordance with the Safety Standard for Refrigeration Systems, ASHRAE 15.
- The ice maker should not be installed in hallways or corridors of public buildings.

SAVE THESE INSTRUCTIONS.

PRODUCT INTRODUCTION



1. Water Tank Lid

2. Control Panel

3. Ice Full Sensor

4. Ice Outlet

5. Removable Water Tank

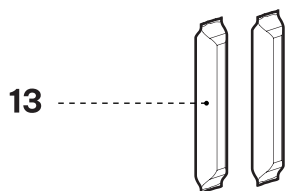
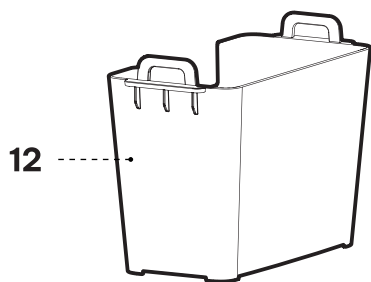
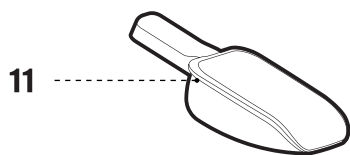
6. Water Fill Line

7. Water Filter

8. Condensation Water Tray

9. Main Drain Plug

10. Condensation Water Tray Drain Plug

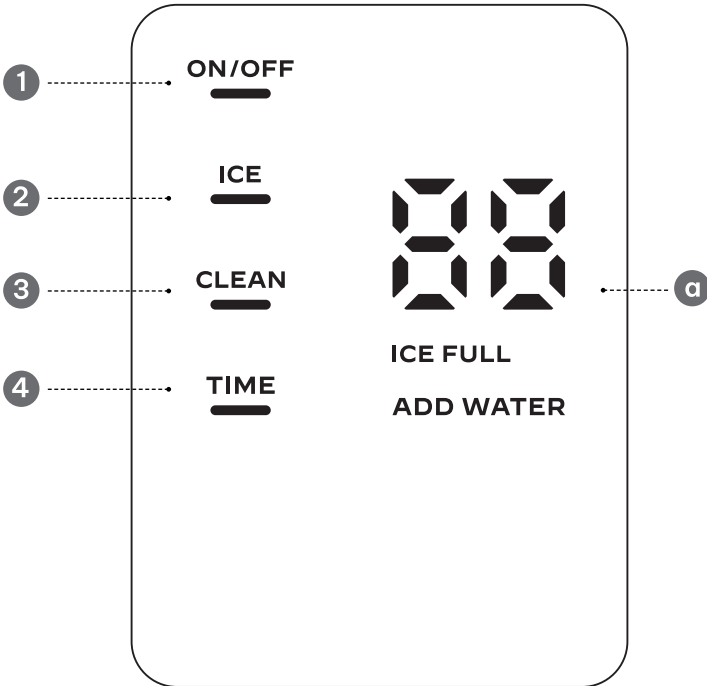




11. Ice Scoop

12. Ice Basket

13. Ice Maker Cleaner

CONTROL PANEL INTRODUCTION



	Button/ Icon	Function
1	<p>ON/OFF</p> 	<p>After plugging into power, press this button to enter standby mode.</p> <hr/> <p>In standby mode, press this button to turn the machine off.</p>
2	<p>ICE</p> 	<p>In standby mode, press this button to start making ice.</p> <hr/> <p>In ice-making mode, press this button to stop making ice.</p>

	Button/ Icon	Function
3	CLEAN 	In standby mode, press this button to enter self-cleaning mode. The countdown for self-cleaning is 5min . When the self-cleaning cycle finishes, the machine automatically enters standby mode. Note: In ice-making mode, the self-cleaning program cannot be started.
4	TIME 	In standby mode, press this button to set the timer. The machine will start making ice an hour before the preset time and continue working until the ice basket is full. <hr/> In ice-making mode, press this button to program the machine should stop making ice.
a		Timer Display (H): When a number is displayed, it indicates when the ice maker should start or stop making ice.
	ON/OFF +	ON/OFF remains lit & displayed: In standby mode
	ON/OFF + ICE	Remain lit: In ice-making mode <hr/> Slow flash: In machine freezing warning state
	ON/OFF + CLEAN	Remain lit: In self-cleaning mode
	ON/OFF + ICE FULL	Remain lit: Ice is full and ready. Remove ice from the machine.
	ON/OFF + ADD WATER	Remain lit: Water tank is low on water. Add water to the machine.

USING YOUR ICE MAKER

BEFORE FIRST USE

1.

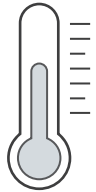
Verify all parts and ice maker accessories were received.
Missing parts? Contact Customer Service.



Stand upright
for 24hrs.



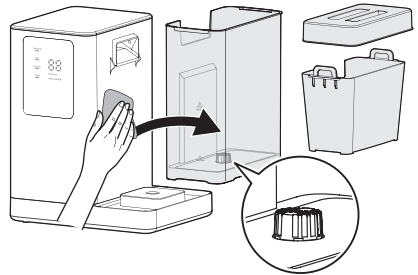
Use in locations
53°F ~ 90°F
(12°C ~ 32°C).



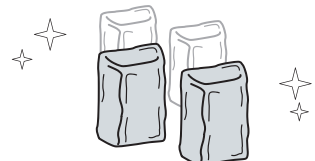
2.

Carefully **remove the protective film** and clean the ice maker thoroughly before first use.

Note: Make sure the drain plug is installed in place.



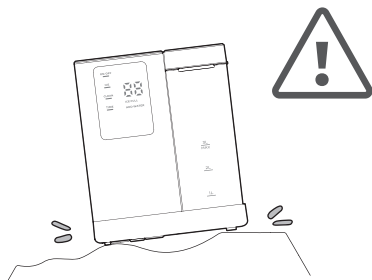
Due to temperature variations and other factors, ice quality should become stable after 5 minutes of continuous ice cube release.



More Cycles = Perfect Shape

3. What Not To Do!

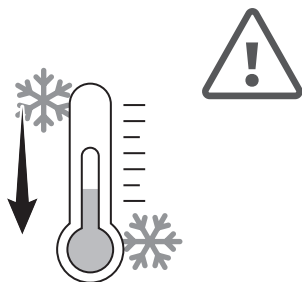
Unstable base.



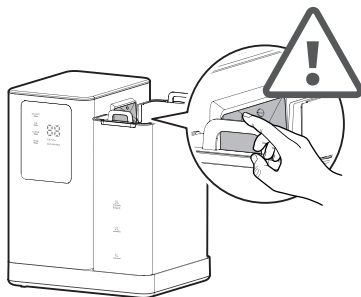
No other liquids
(Drinking water only).



Do not use in high or low temps,
especially **lower than 41°F/5°C.**



Keep fingers away from the ice
outlet. The ice maker will detect
ice is full and stop working. Wait 5
minutes before further operation.

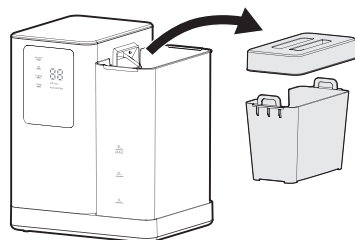


HOW TO USE YOUR ICE MAKER

1.

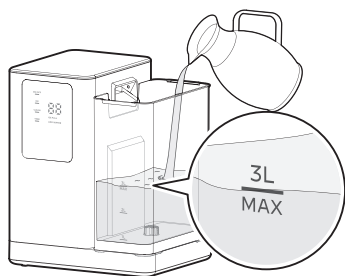
Remove the water tank lid and the
ice basket.

Note: Ensure the water tank is
installed in place.

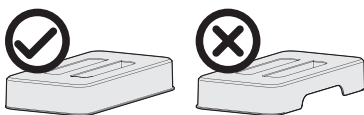


2.

Add water. Do not exceed the “MAX” water line. Then put the ice basket and the lid back into the machine.

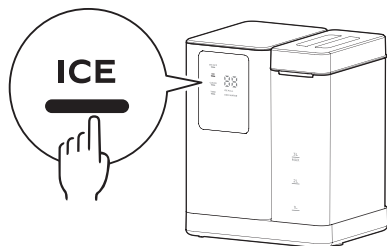


Note: The notch should face the ice outlet.



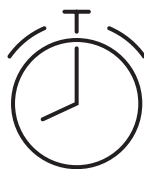
3.

Press the **ICE** button.



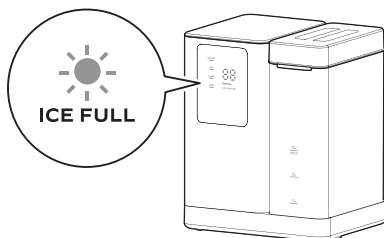
4.

Wait **10min**. The ice-making time depends on room temp and water temp.



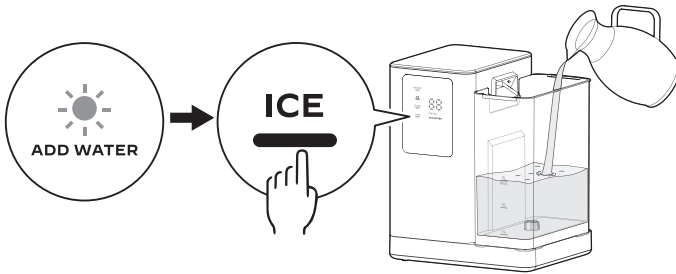
DONE:

The **ICE FULL** indicator light turns on when the ice basket is full.

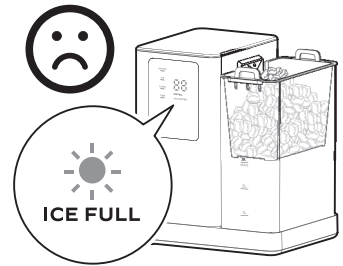


REFILL:

When the ADD WATER indicator light turns on, ice-making will stop. Refill water, then press the **ICE** button to restart the machine.

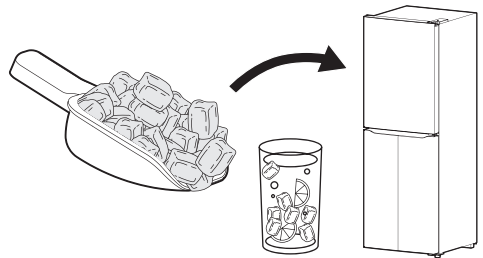


To avoid an ice full false alarm, remove the ice promptly or spread it evenly in the basket to allow normal ice production.



Remove ice cubes before they start to melt.

Some water may drip out when removing the ice basket. Use a dry towel to keep water from dripping on surfaces.

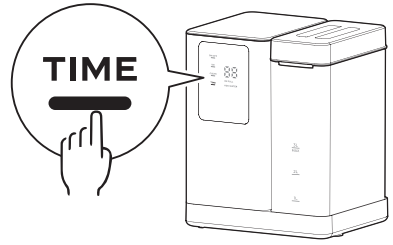


Note:

1. If you restart the machine after an accidental power-off, the compressor protection process will take 5 minutes. In this case, water will come out of the ice outlet. This is normal, so please wait patiently.
2. If the machine works continuously for over 4.5 hours, the 6-minute self-cleaning program will be triggered automatically.

TIMER FUNCTION

Press the **TIME** button to set a timer duration up to 12 hours. Use the button to increase or decrease the timer by 1 hour with each press.



IN STANDBY MODE:

If you set the timer in standby mode, the machine will start making ice an hour before the preset time and stop automatically when the ice basket is full.

Note: The default display is 00. The timer increases by an hour with each press. The setting will be saved after three flashes.

IN ICE-MAKING CYCLE:

If you set the timer in ice-making mode, the machine will stop making ice after the countdown is finished.

Note: The default display is 12. The timer decreases by an hour with each press. The setting will be saved after three flashes.

CLEANING AND MAINTENANCE

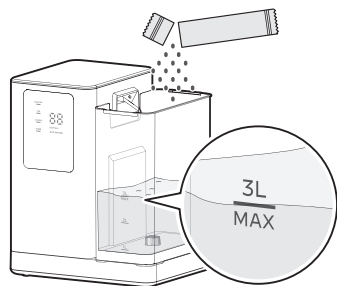
To keep your ice tasting fresh and the unit looking great, we recommend cleaning the unit once per week.

SELF-CLEANING (5-MIN PROCESS)

1.

Mix ice maker cleaner with water following the instructions, then add it to the water tank. Put the ice basket and the water tank lid back into the machine.

Note: Water or water/vinegar mixture in a ratio of 5:1 works too. In areas with hard water, leave the detergent in the machine for 12 hours.

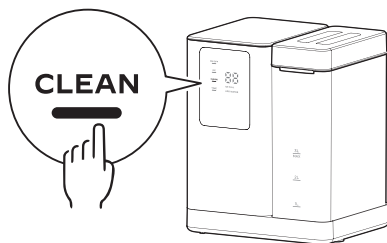


2.

IN STANDBY MODE:

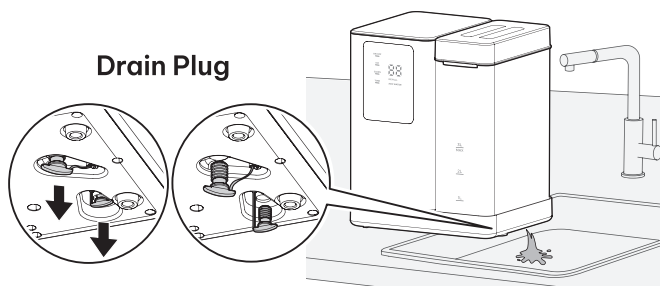
Press the **CLEAN** button to start self-cleaning.

Properly place the ice basket before starting self-cleaning mode. Otherwise, water leakage may happen during cleaning.



3.

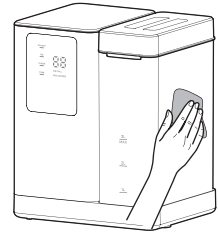
Drain any excess water over the sink. Then repeat the process several times using clean water to ensure the machine is thoroughly cleaned.



4.

Clean the ice basket with warm water, then put it back into the machine.

Wipe the exterior with a cloth using mild dishwashing soap.

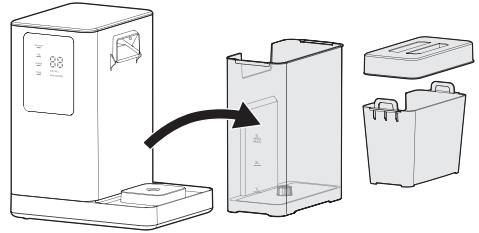


MANUAL CLEANING

Turn off the unit and disconnect from power before cleaning.

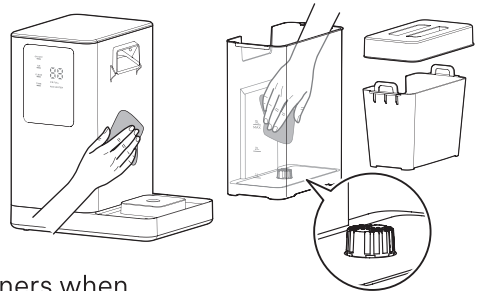
1.

Remove the lid, the ice basket, and the water tank.



2.

Add water/vinegar mixture in a ratio of 5:1, then leave in the water tank for a period of time. Clean the water filter, the ice outlet, the ice basket, and other small corners to prevent dirt buildup.

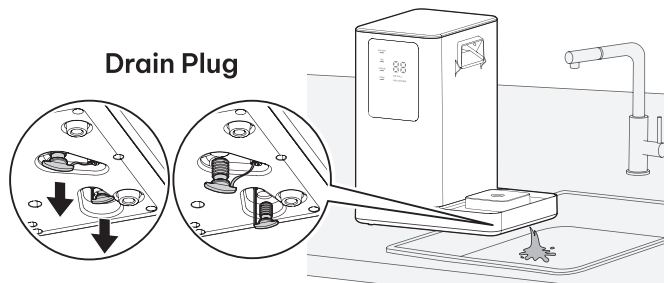


Water Filter

Note: Do not use the supplied cleaners when performing manual cleaning.

3.

Drain any excess water over the sink. Then repeat the process several times using clean water to ensure the machine is thoroughly cleaned.



Drain Plug

4.

Put the parts back into the machine.
Wipe the exterior with a cloth using mild dishwashing soap.



! DO's & DON'Ts while cleaning and maintaining

- **Do not** use organic solvent, boiled water, strong acid and strong alkali etc. for cleaning.
- Considering the wide range of water quality across different regions, it is recommended to perform regular manual cleaning.
- Limescale can easily form if the ice basket is submerged in water for a long period of time. Drain water if the machine is not in use.
- If the machine has been running for **more than 100 hours**, the **CLEAN** indicator light will flash slowly for a self-cleaning reminder. In this case, we recommend running the self-cleaning cycle to **turn off** the indicator.
- It is recommended to **drain the water tank** and **the condensation water tray** at least once every three days.
- When the unit is not to be used for a long duration, **drain** the water completely & dry the interior.
- **Store** in a well-ventilated area.

PRODUCT SPECIFICATIONS

Voltage/Frequency	120V~ 60Hz
Ice-Making Current	1.5A
Working Power	130W
Water Tank	0.8 gal (3L)
Ice Basket Capacity	1.8 lbs (0.8kg)
Ice-Making Rate	40 lbs (18kg) per Day
Ice Shape	Nugget
Material	ABS, PP, Stainless Steel
Net Weight	20.5 lbs (9.3kg)
Product Size	12.3 x 9.9 x 15" (314 x 252 x 380mm)

TROUBLESHOOTING

Problem	Possible Causes	Solution
“ADD WATER” indicator light turns on.	Low water level or not enough water.	Refill water, press the ICE button, then restart and try again.
	If the ice maker has not been cleaned for a long time, a residue may form around the inlet of the water pump.	Run the self-cleaning cycle using professional ice maker detergent and leave the detergent in the machine for 12 hours to remove scale.
	Float switch malfunction. This may cause the indicator light to turn on even if there is water.	Please contact customer service.
	Water pump is damaged.	
“ICE FULL” indicator light turns on.	There is too much ice, or there is ice blocking the ice outlet.	Remove the ice promptly or spread it evenly in the basket.
	Infrared sensors do not work.	Wipe clean the infrared sensors. Contact customer service if the infrared sensors still don't work.
The ON/OFF indicator light turns on, and the ICE indicator light flashes slowly.	The ice-making system is defrosting.	This is normal. The machine will return to work after 30-45 minutes.

Problem	Possible Causes	Solution
The ON/OFF and the ICE indicator lights flash slowly.	Machine freezing warning due to prolonged working.	Power off. Leave the machine to rest for an hour, then restart and use it.
The ON/OFF, ICE FULL and ADD WATER indicator lights flash alternately.	Waterway malfunction.	Please contact customer service.
Unshaped ice appears.	The added water temperature is higher than the existing water, leading to machine overload.	Remove the ice cubes from the ice basket. Pause the ice maker for 15-30 minutes, then restart it.
	The hot air outlet has been blocked.	Maintain 6" (15cm) of distance between the hot air outlet and the wall.
	Refrigerant leak.	Please contact customer service.
The CLEAN indicator light flashes slowly.	The machine has been running for more than 100 hours.	In this case, the CLEAN indicator light will flash for a self-cleaning reminder, which is normal.

Problem	Possible Causes	Solution
Making ice too slowly.	The hot air outlet has been blocked.	Maintain 6" (15cm) distance between the hot air outlet and the wall.
	The water temperature in the inner tank is too high.	The water temperature should be 45°F - 90°F.
	The refrigeration system is not functioning properly.	Please contact customer service.
Water comes out of the ice outlet.	The machine works continuously for over 4.5 hours.	In this case, the 6-minute self-cleaning cycle will be triggered automatically, which is normal.
	The machine has suffered an accidental power-off.	In this case, the 5-minute compressor protection process will be triggered if the machine is restarted. This is normal.
Water leakage.	The ice basket is not properly placed during the self-cleaning process.	Properly place the ice basket in the designated slot.
	The drain plug is not in place.	Reinstall the drain plug in place.
	The condensation water tray is full.	Unplug the condensation water tray drain plug for water drainage.
	Pipe joints in the appliance may be loose.	Please contact customer service.
	The seal has completed its service life and needs to be replaced.	

Problem	Possible Causes	Solution
Ice maker creating loud noise.	If the ice maker has not been cleaned for a long time, a sticky residue may form around the inlet of the water pump.	Run the self-cleaning program using professional ice maker detergent and leave the detergent in the machine for 12 hours to remove scale. <hr/> Clean every week using mild cleaning agents.
	There is air in the water hose when the machine is trying to pump.	Unplug the drain plug to remove the air.
	Lack of water to pump will create noise when pumping water.	Add more water.
	Machine overload.	The water temperature should be 45°F - 90°F.
		Maintain 6" (15cm) distance between the hot air outlet and the wall.
	The water hoses freeze due to the lower machine temperature.	Remove the ice promptly.
	Fan or ice maker is damaged.	Please contact customer service.
	Water pump is damaged.	

WARRANTY INFORMATION

30-DAY LIMITED WARRANTY

To provide customers with a quality shopping and user experience, the unit can be replaced or returned for a full refund within the 30-day period from the date of purchase.

30-DAY TO 1-YEAR LIMITED WARRANTY

After the 30-day warranty has expired, a 1-year warranty from the date of purchase that covers product replacement is automatically activated. Please note that proof of purchase is required for all warranty claims.

30-DAY TO 1-YEAR WARRANTY LIMITATIONS

This warranty does not cover:

- Any condition resulting from incorrect or inadequate maintenance or care.
- Damage resulting from misuse, abuse, negligence, accidents, or shipping damage.
- Dissatisfaction due to buyer's remorse.
- Normal wear and tear.
- Damages incurred after initial transportation.

Thank You

for Choosing Us!

860-04060-00 V3

