



JLAB  
EPIC  
MOUSE

We love that you are rocking JLab!  
We take pride in our products and fully stand behind them.



### YOUR WARRANTY

All warranty claims are subject to JLab authorization and at our sole discretion. Retain your proof of purchase to ensure warranty coverage.



### CONTACT US

Reach out to us at [support@jlab.com](mailto:support@jlab.com) or visit [jlab.com/contact](http://jlab.com/contact)

## REGISTER TODAY

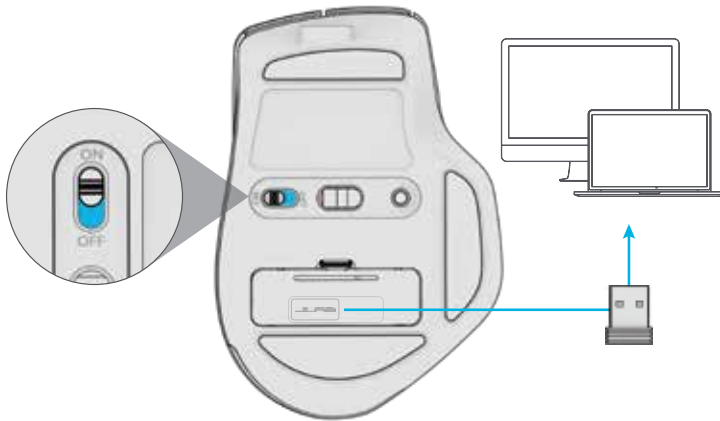
[jlab.com/register](http://jlab.com/register)

Product updates | How-to tips  
FAQs & more

## 1 SETUP

### 2.4 Connect

Plug in the USB dongle to computer and turn on.  
The Epic Mouse will auto connect to device.

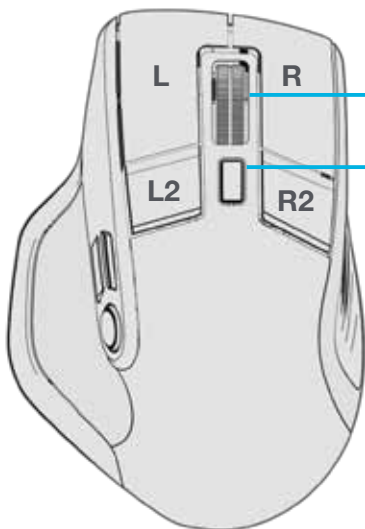


## 2 Bluetooth Connect

**Quick Press** to toggle between 2.4, 1, and 2.  
Then **Press and hold** to enter Pairing Mode.  
Select "JLab Epic Mouse" in device settings



## INTERFACE

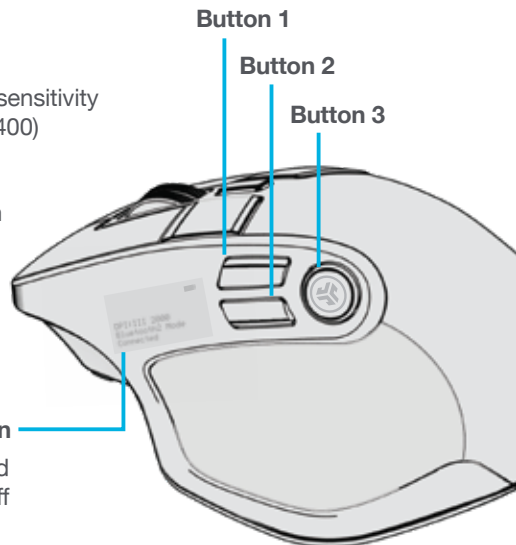


Scroll + Middle Button

DPI Button

**Quick Press:**  
Toggle press mouse sensitivity  
(1200, 1600, 2000, 2400)

**Press and hold:**  
Button customization



OLED Screen

**Press and hold** DPI Button and  
Button 3 to toggle screen on or off

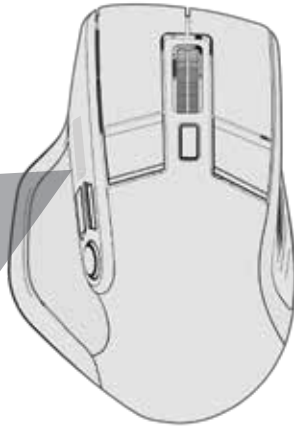
## CHARGING

Connect the Epic Mouse to computer or USB 5V 1A (or less) to charge.



battery life indicator ▼

DPI:III 2000  
Bluetooth2 Mode  
Connected



## CUSTOMIZATION

Download the JLab App (for Mac and PC) to fully customize the Epic Mouse at: [JLAB.COM/SOFTWARE](https://www.jlab.com/software)



(2.4 dongle needs to be plugged in for customizing software)



[Shop products](#) | [Product alerts](#) | [Burn-in your headphones](#)

JLab Store + Burn-in Tool

