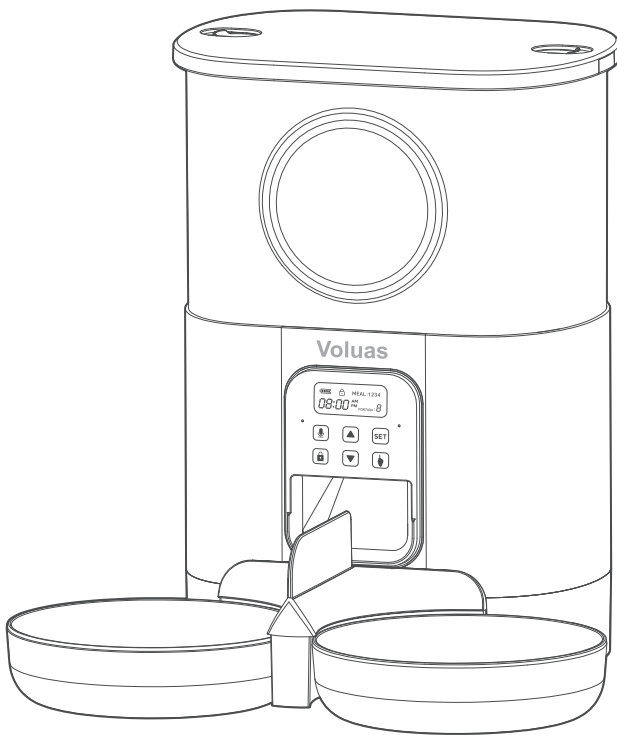


# Automatic Pet Feeder

## User Guide

### (Generic)



Please Read This Guide Before Beginning.

# 1. Warranty

This Product has a 1 year limited manufacturer's warranty. Complete details of this product's warranty and full terms can be found at [www.voluas.com](http://www.voluas.com). For any questions please contact us at [support@voluas.com](mailto:support@voluas.com). We will replay as soon as possible.



Scan For More Details  
[www.voluas.com](http://www.voluas.com)

## 2. Important Safety Information



This is the safety alert symbol. It is used to alert you to potential personal injury hazards.

Obey all safety messages that follow this symbol to avoid possible injury or death.

**WARNING:** Indicates a hazardous situation which, if not avoided, could result in death or serious injury.

**CAUTION:** Used without the safety alert symbol, indicates a hazardous situation which, if not avoided, could result in harm to your pet.

**NOTICE:** Is used to address safe use practices not related to personal injury.



### **WARNING:**

- DO NOT immerse control panel in water. Base unit should NOT be submerged in water at any time, as this may damage electronic components.
- DO NOT place anything on top of the pet feeder. The unit starts automatically. Keep clear.
- Dispose of all packaging materials properly. Some items may be packed in polybags; these bags could cause suffocation; keep away from children and pets.
- DO NOT allow small children to play with, in or around pet feeder.
- To reduce the risk of injury, close supervision is necessary when an appliance is used by or near children.
- Intended for use with dogs or cats only.
- DO NOT use this pet feeder with puppies, kittens, dogs or cats not able to reach the food tray or with any physical disability.
- DO NOT use outdoors. FOR INDOOR HOUSEHOLD USE ONLY. Check operation frequently to be sure the pet feeder is dispensing properly.
- For dry food use only.
- DO NOT use wet, canned or moist food.
- Pet feeder should be placed on a level surface.
- Before leaving for extended time, always replace batteries with new batteries.
- DO NOT place any foreign object in the pet feeder.
- DO NOT disassemble the pet feeder other than components as instructed in this operating guide.
- To protect against electric shock, if using power cord do not place power cord or plug in water or other liquids.
- Only use attachments recommended or sold by the manufacturer.
- DO NOT unplug by pulling on power cord. To unplug, grasp the plug, not the power cord.

- DO NOT operate any appliance if it has a damaged power cord or plug, or if it is malfunctioning or has been damaged. Call the Customer Care Center immediately for further instructions.
- For a portable appliance - To reduce the risk of electrical shock, do not place or store an appliance where it can fall or be pulled into a tub or sink.
- Always unplug any appliance when not in use, before putting on or taking off parts and before cleaning. Never pull on the electrical power cord to remove the plug from the wall outlet.
- DO NOT use an appliance for anything other than its intended use.
- If the plug of this device gets wet, turn off the electricity to that wall outlet. Do not attempt to unplug.
- Examine this appliance after installation. Do not plug in if there is water on the Power Cord or plug.
- To avoid tripping, always position power cord out of the way of foot traffic.



**CAUTION:**

Do not allow pets to chew on or swallow any parts. If you are concerned about the power cord, purchase a cord conduit (a hard plastic protector) at any hardware store to protect the power cord.

## 3. Components

Note: Bowl and bowl holder are shipped inside feeder.

Note: Power Supply method:

- (1). DC 5.0V Power adapter & USB cable
- (2). 3 D-cell alkaline batteries Required. Batteries NOT Included.

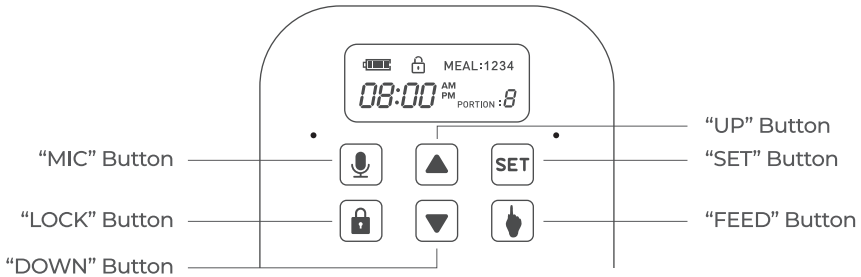
### **WHATS IN THE BOX**

- |                         |                             |
|-------------------------|-----------------------------|
| 1. Automatic Pet Feeder | 6. Base Bracket             |
| 2. Power Adapter        | 7. Stainless Steel Bowl x 2 |
| 3. USB Power Cable      | 8. Bowl Holder x 2          |
| 4. Desiccant Bag        | 9. User Manual              |
| 5. Meal Divider         |                             |



## Feeding Schedule Setup:

Panel Instruction









## 4.1 Specifications

Power	DC 5V power adapter; 3 x alkaline D batteries
Power Adapter	AC100-240V Input, DC 5V output
Working Current	Avg. 80 mA
Operating Temperature	-20° C - 85° C / -4° F - 185° F
External Socket	53mm power socket

## 4.2 Key Definitions

6 Button Navigation	6 button control panel with up arrow, down arrow, mic button, lock button, set button and feed button on the Navigation LCD screen are used to program feeder.
Battery Compartment	Located on bottom of feeder base. Holds 3 D-cell alkaline batteries.
Battery Cover	Covers and protects the battery compartment.
Battery Indicator	Shows a visual readout of battery level.
Button Lock	The 6-Button Navigation panel automatically locks after 20 secs of inactivity and the lock icon appears on LCD screen.
Button Lock Indicator	Shows a visual indication of lock status.
Control Panel	Contains LCD screen and 6 Button Navigation Panel.
Desiccant Carrier	Load desiccant.
Feeder Base	Holds food tank and bowl. Main part of feeder with the control panel.
Food Chute Outlet	Opening in feeder base and conveyor where dispenses into stainless steel bowl.
Food Tank	Container for dry pet food.
Food Tank Buckle	Secures food tank can allowed to detachment for cleaning.
LCD Screen	Liquid crystal display screen to visually display text and images to easily program the pet feeder. Located on the control panel on the hopper base.
Lid	Serves as the closure or seal of the food tank.
Lid Release Button	Allows lid to be removed for adding pet food.
Low Battery/Mic Indicator	Visually displays battery level and Mic status.
Meal Number	Indicates which meal is being programmed. Up to 40 meals can be scheduled.
Unit Conversion	1 Serving = 2.5 Teaspoons; 12 Servings = 30 Teaspoons = 0.625 Cups; 1 Cup = 48 Teaspoons = 19.2 Servings =1.6 Meals; 5L=21 Cups.
Meal Size	Indicates portion size of meal being programmed or portion for next scheduled meal.
MIC Button	Allows for voice recording.
Removable Bowl Holder	Removable plastic piece which attaches to feeder hopper base and secures steel bowl.
Removable Stainless Steel Bowl	Catches dry pet food when dispensed from feeder food chute.
Speaker	Plays voice recordings.
Time Indicator	Displays the current time or time of next scheduled meal.
USB Power Connector	For connecting the pet feeder to the power adapter (Included).

## 6-BUTTON NAVIGATION QUICK GUIDE

BUTTON	DESCRIPTION	SETUP MODE FUNCTION
	MIC	Record Voice Message.
	LOCK	Displays when 6-Button Navigation is Disabled. Buttons Automatically Lock When Not in Use.
	UP	Increases Selection
	DOWN	Decreases Selection
	SET	Parameter Modification
	FEED	Manual Feeding Mode

### 4.3 Quick Programming Guide

**Note:** Please ensure the feeder machine is powered on with DC 5.0V power adapter and USB power cable or 3 D-cell alkaline batteries.

**Note:** Please ensure the control panel is unlocked.




**Note:** INDOOR HOUSEHOLD USE ONLY.

#### 4.3.1 LOCK button.

Press “” button to unlock the control panel, the icon will indicate the unlock standby state. The 6-Button Navigation automatically locks after 20secs of inactivity and the lock icon appears icon appears on LCD screen.






#### 4.3.2 MIC Button.

When enter the unlocked state and standby, pressing and holding this key “” for 2 seconds then the “Low Battery/Mic” Led will turn red and speaker ring once, which prompts to start recording. When you release the “” button, the recording ends. At the same time, your recording will be replayed. (Please keep pressing the key “” during the whole recording process.)

#### 4.3.3 SYSTEM TIME SETTING

##### A. Hour Setting.

In the unlocked state, press the “” button to set the “hour” of the system, the number of “hour” will flash. At this time, press the “” key or the “” key to adjust the “hour”. Press and hold to quickly increase or decrease to desired hour.



## B. Minute Setting.

Press the “**SET**” button again to set the “minute” of the system, the number of “minute” will flash. At this time, press the “**▲**” key or the “**▼**” key to adjust the “minute”. Press and hold to quickly increase or decrease to desired minute. (Displays the current system time or time of scheduled meal.)



## 4.3.4 MEAL TIME SETTING

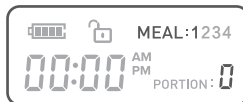
A. Press the “**SET**” button to set the “hour” of feeding time of the 1st meal, the number of “Meal 1” and “hour” will flash. At this time, press the “**▲**” key or “**▼**” key to adjust the “hour” of the first meal feeding time. Press and hold to quickly increase or decrease to desired hour.



B. Press the “**SET**” button to set the “minute” of feeding time of the 1st meal, the number of “Meal 1” and “minute” will flash. At this time, press the “**▲**” key or “**▼**” key to adjust the “minute” of the first meal feeding time. Press and hold to quickly increase or decrease to desired hour.

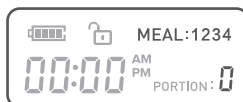


C. Press the “**SET**” button to set the “Portion” for the 1st meal, the number of “Meal 1” and “Portion” will flash. At this time, press the “**▲**” key or “**▼**” key to adjust the “Portion” of the first meal. Press and hold to quickly increase or decrease to desired Portion.



## D. Cancel the Meals.

Set the portion to 0, the meal will be canceled. And the canceled meal sign will be blank when it back to standby state.




E. Repeat process for additional meals.

F. Press and hold the “” button until it return to the unlocked standby state.


Tips: In the above steps 1-14, if you press and hold the button for a long time, it will directly return to the unlock standby state.

#### **4.3.5 UP&DOWN BUTTON**

A. UP Button. (“”)

Short press the “” key once, the set number will increase by 1. Long press to quickly increase selection.

DOWN Button. (“”)

Short press the “” key once, the set number will decrease by 1. Long press to quickly increase selection.

#### **4.3.6 FEED BUTTON**

A. FEED Button. (“”)

In the unlocked state, short press once to manually feed a meal manually feed a meal.

#### **4.3.7 Note:**

(1). There is a Low Battery indicator on the left side of the control panel. When you go out for extended period, check if the voltage indicator light is on. If there is a light or flashing light, please replace the battery to prevent your pet from starvation.

(2). DO NOT put your fingers into the machine at any time.

(3). This product uses 3 x D alkaline batteries.

(4). Please dispose of old batteries in accordance with national regulations (pay attention to environmental protection). When the feeder is not in use for extended periods, please remove the battery to prevent leaking battery fluid.

Do not add semi-dry or wet pet food, this product can only use dry pet food.

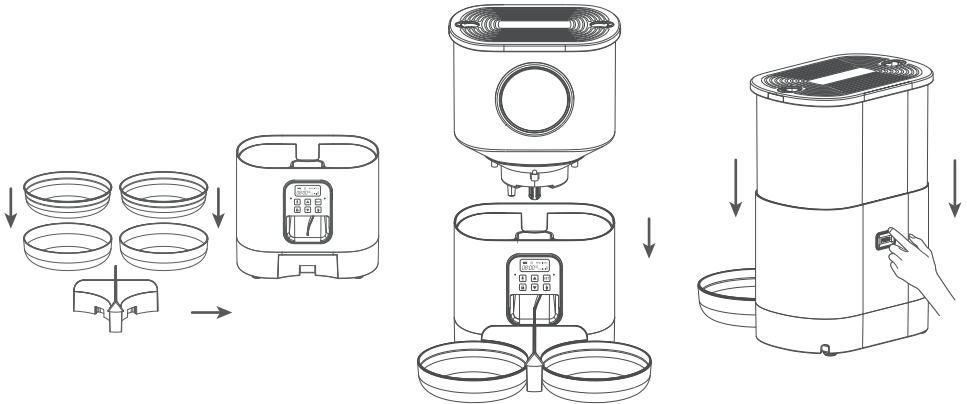
## 5.Prepare and Assemble Feeder

### 5.1 Assembling Bowl Holder& the Bowl

Pull the bowl holder out from the feeder food tank and install the bowl into holder. Connect the holder and bowl to the machine.

**Note:**

For a better antioxidant effect, tear off the sealing film outside the small package only when you use it.



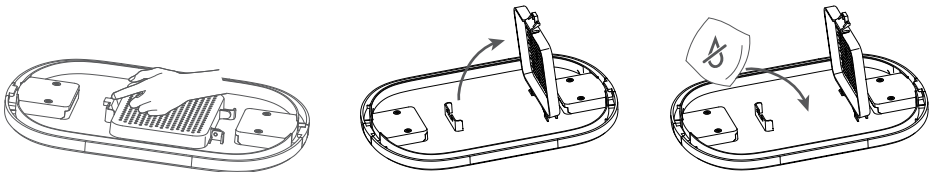
### 5.2 Placing Desiccant Bag

The desiccant bag can remove the moisture or odor inside the tank, protect the pet food from oxidation damage, and preserve freshness.

**Note:**

It's recommended to change desiccant bag every 15 days to prevent mold. Please remove the desiccant bag before cleaning the lid.

For a better antioxidant effect, tear off the sealing film outside the small package and use immediately.



### 5.3 Connecting Power

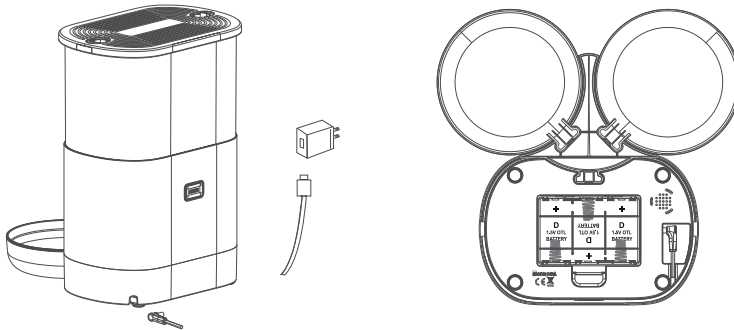
- Insert the 5V power adapter into a wall socket, Plug in the power socket of the feeder.
- Open the battery compartment at the bottom of the unit, and install 3 alkaline D batteries (not included) in case of outage.
- The LCD display will light up automatically indicating the feeder is on.

**Note:**

Battery NOT included.

Before connecting to power, make sure all parts are clean and completely dry.

The battery should power with an output of 4-5V; the battery level icon on the display blinks on a low battery level(<4V).



### 5.4 Feeding Schedule Setup

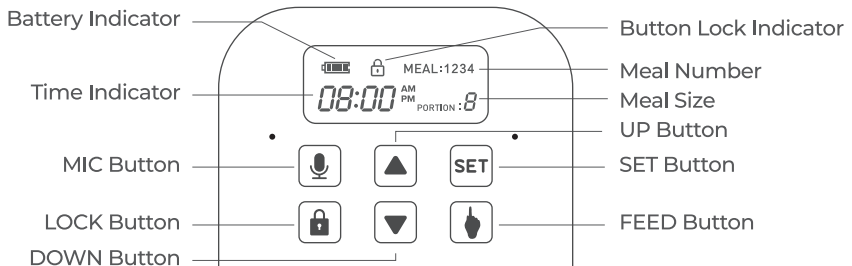
(Refers to No.4.3 steps)

- Fill food tank with dry pet food. Close the lid and it will snap into place due to gravity;
- Set the portion to 0, the meal will be canceled.

**Note:**

Do NOT use canned, wet or moist pet food.

Recommend kibble size ranging from 2-10mm/ 0.07-0.4in in diameter.



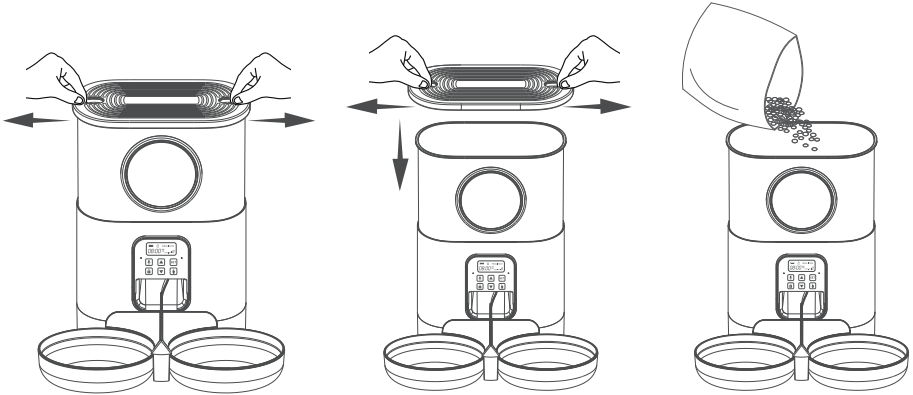
### 5.5 Filling Food Tank

-Fill food tank with dry pet food. Close the lid and it will snap into place due to gravity.

**Note:**

Do NOT use canned, wet or moist pet food.

Recommend kibble size ranging from 2-10mm/ 0.07-0.4in in diameter.



### 5.6 Recording A Meal Call

- Press and hold the “🎤” button, start recording after beep.
- Release the button when finished, 2 beeps indicate it's successfully saved.10 second maximum recording length.

### 5.7 Manually Feeding Your Pet

Press the “🔥” button and one portion (2½ tsp/125ml) will be fed each time.

**5.8 Note:**

The normal schedule and portion will not be affected.

## 6. Troubleshooting

The answers to these questions should help you solve most problems you may have with the pet feeder.

PROBLEM	SOLUTION
6-Button Navigation is locked/ buttons do not work.	Buttons automatically lock after 2 minutes of inactivity. To unlock 6-Button Navigation Panel, press "LOCK" Button.
The food won't come out.	Please be sure to fill ONLY with dry food; kibble size should range from 2-10mm/0.07-0.4in in diameter. Check for foreign objects inside disassemble the food tank and check the chute and food outlet for blockage. Check for low battery level/power adapter is connected properly.
Why is the amount of food from my feeder inaccurate, the number on the display is not clear, or the function is not working properly?	This is likely due to a low battery. Replace 3 D-cell alkaline batteries.
How to clean the feeder?	This product cannot be placed outdoors or exposed to rain. When cleaning, use a damp cloth to clean exterior while preventing water from going inside the machine. If you need to disassemble the food storage bucket, please follow the instructions from "Product Assembly and Use" . The storage tank, bucket lid, and feeding basin can be hand- cleaned with water.

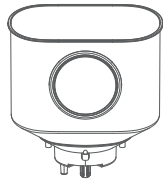
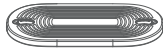
# 7. Replacement Parts and Accessories

## 7.1 Cleaning parts

It's recommended to clean the feeder regularly for the continued good health of your pet. The washable parts of the auto pet feeder are as follows:

1. Food tank.
2. Food tray.
3. Lid (without desiccant bag);

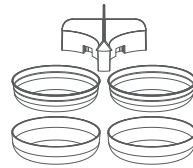
They can be submerged in water. Clean **ONLY** by hand-washing using cool or warm soapy water.



Washable



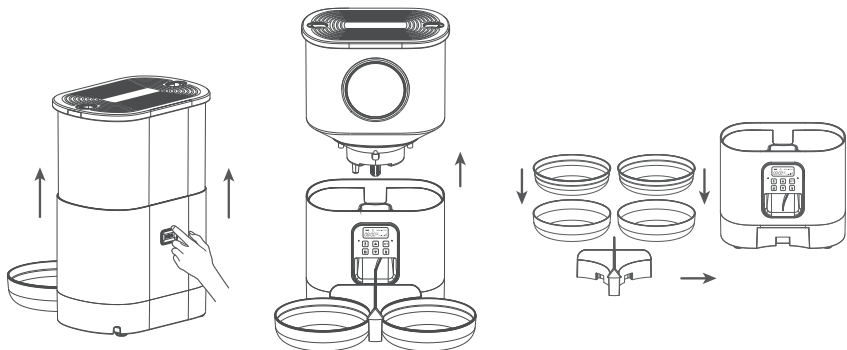
Not washable



Washable

## 7.2 Disassembling the food tank



If you have food inside the tank or chute outlet, press the Unlocked button on both sides of the machine and the press Feed button a few times to empty firstly. Press the food tank buckles with your thumbs and push the tank upward to disassemble.



# Voluas<sup>®</sup>



Scan For More Details  
[www.voluas.com](http://www.voluas.com)

 @voluas  
 @voluas  
 @voluas  
 @voluas  
 @voluas\_petsupplies



Made in China