

Manual

Product Overview

Model: T24A2

FCC ID:2BSP4-T24A20000002

Date:March 30, 2026

Description: T24A2 is a portable hardware product designed for quick item search. It communicates with the base station via the proprietary 2.4GHz protocol. The base station can control it, provide audio and visual cues, and offers 7 different lighting colors to choose from.

FCC Compliance Information

FCC Compliance Statement

This equipment complies with Part 15 of the FCC Rules. Operation is subject to the following two conditions:

- 1.This device may not cause harmful interference, and
- 2.This device must accept any interference received, including interference that may cause undesired operation.

Caution : Any changes or modifications not expressly approved by the party responsible for compliance with the FCC rules could void the user's authority to operate the equipment under the FCC rules.

This equipment has been tested and found to comply with the limits for a Class B digital device, pursuant to part 15 of the FCC Rules. These limits are designed to provide reasonable protection against harmful interference in a residential installation. This equipment

generates, uses and can radiate radio frequency energy and, if not installed and used in accordance with the instructions, may cause harmful interference to radio communications. However, there is no guarantee that interference will not occur in a particular installation. If this equipment does cause harmful interference to radio or television reception, which can be determined by turning the equipment off and on, the user is encouraged to try to correct the interference by one or more of the following measures:

- Reorient or relocate the receiving antenna.
- Increase the separation between the equipment and receiver.
- Connect the equipment into an outlet on a circuit different from that to which the receiver is connected.
- Consult the dealer or an experienced radio/TV technician for help.

RF Exposure :

This equipment complies with FCC radiation exposure limits set forth for an uncontrolled environment. This transmitter must be operated with the designated antenna and at a separation distance of at least 20cm from the body of all persons to ensure compliance.

Industry Canada (IC) Compliance :

This device complies with Industry Canada license-exempt RSS standards. Operation is subject to the following two conditions:

1. This device may not cause interference.
2. This device must accept any interference received, including interference that may cause undesired operation.

Technical Specifications

Radio Frequency Parameters

Parameter	Value
Operating Frequency	2.41-2.48 GHz
Modulation Type	GFSK
Channel Bandwidth	1 MHz
Maximum Output Power	6.29dBm
Antenna Type	PCB antenna
Antenna Gain	-4.41 dBi
Minimum Separation Distance	20cm from body

Environmental Parameters

Parameter	Value
Operating Temperature	-20°C to +60°C
Storage Temperature	10°C to +25°C
Operating Humidity	15% to 75% RH
Storage Humidity	15% to 75% RH

Operation Modes

Active mode

1. Every 8 hours, actively transmit the light strip number and lighting status information to the base station.

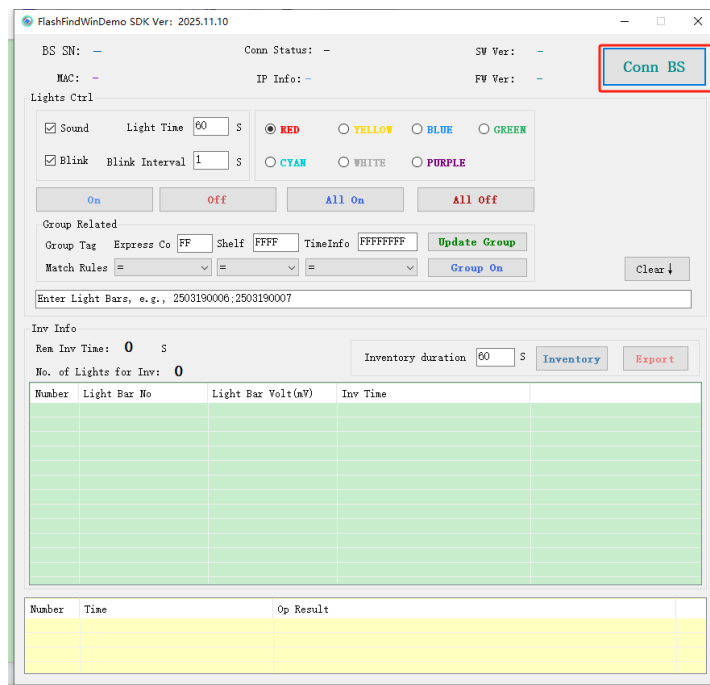
Controlled mode

1. The base station controls the lighting strips through our proprietary protocol, enabling operations such as turning the lights on and off.

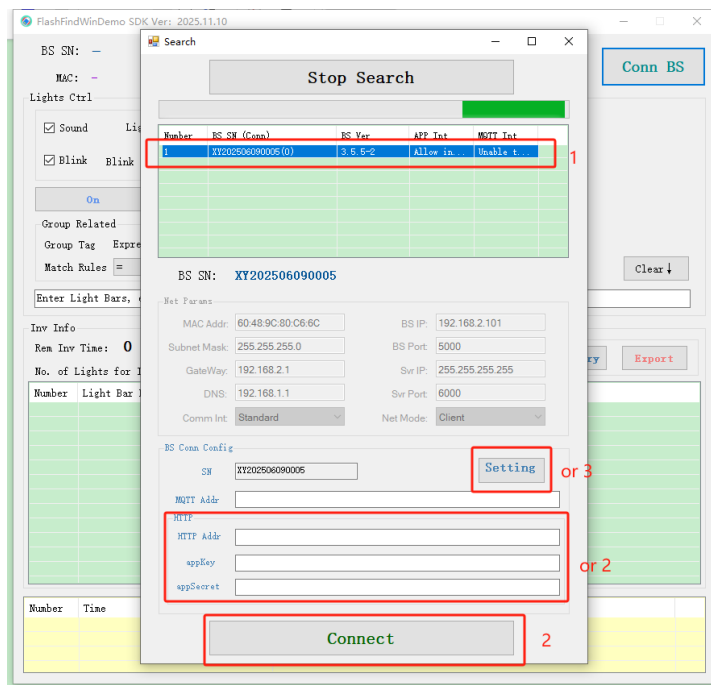
Installation and Operating Instructions

1. **installation:** Just clip the device onto the items that need to be managed.

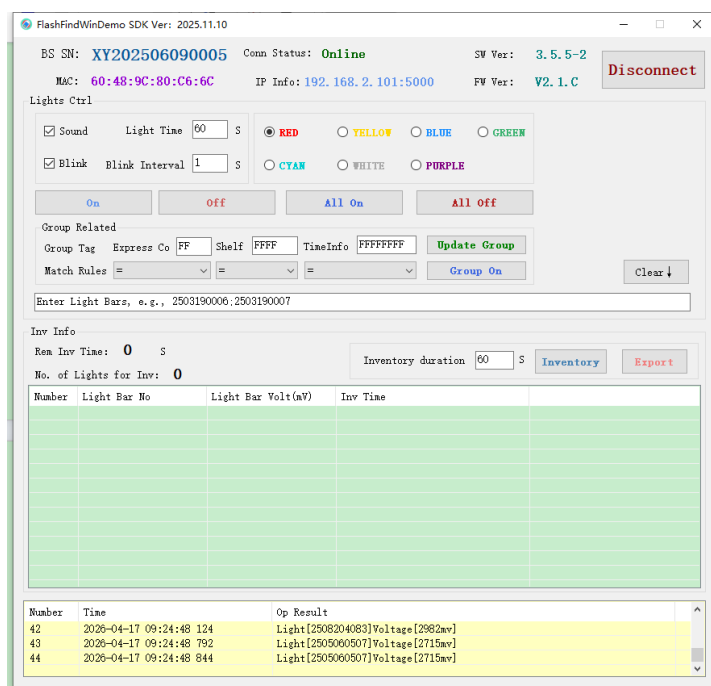
2. **Operating Instructions:** Open our demo tool, On the main interface (Figure 1), click the "Conn BS" button to enter the device search interface.



Enter the search interface, after clicking on the "Select Device" option, you can configure the connection parameters for HTTP, MQTT, or directly select the "Connect" button to establish a TCP connection with the device.



After the equipment is connected, you can view the relevant parameters of the equipment and operate the light strips.



The configuration can include whether the light strips should flash, make sounds, have specific lighting colors, be activated individually or all at once, and be stopped individually or all at once.

Safety Precautions

1. **RF Exposure:** Maintain a minimum distance of 20cm between the device antenna and human body during operation.

2. **Environmental Conditions:** Do not operate the device outside the specified temperature and humidity ranges.

3. **Antenna Use:** Only use the designated internal antenna. Unauthorized changes or modifications to the antenna could void the user's authority to operate the equipment.

4. **Modifications:** Unauthorized modifications to the device may void the user's authority to operate the equipment.