

APP



Google Play and the Google Play logo are trademarks of Google Inc.



Apple and the Apple logo are trademarks of Apple Inc.

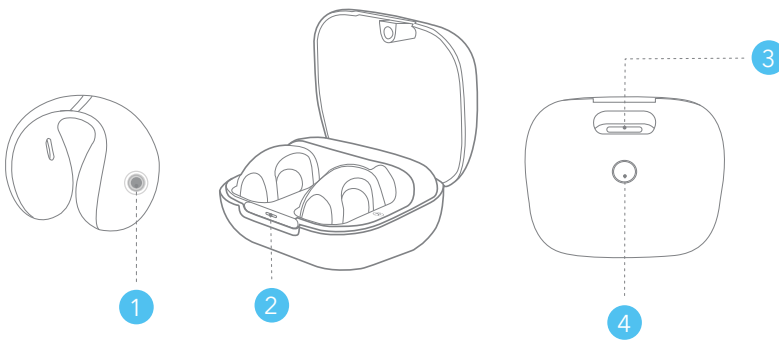


Download the soundcore app to check battery level of the earbuds, customize controls, update firmware and explore more exciting features.

If your earbuds cannot connect with the soundcore app, re-install the app or update it to the latest version in your mobile app store.

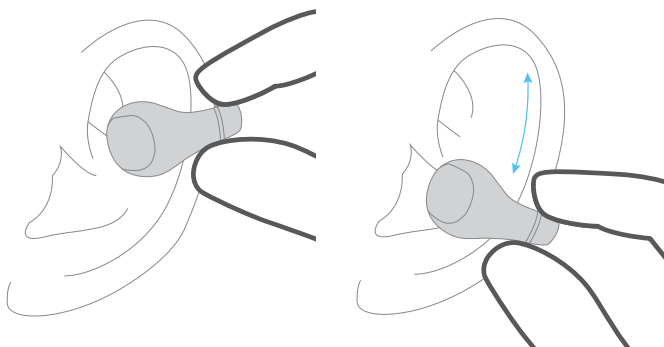
Click this link to download: <http://dl-soundcore.soundcore.com/qcdl?flow=soundcore>.

OVERVIEW



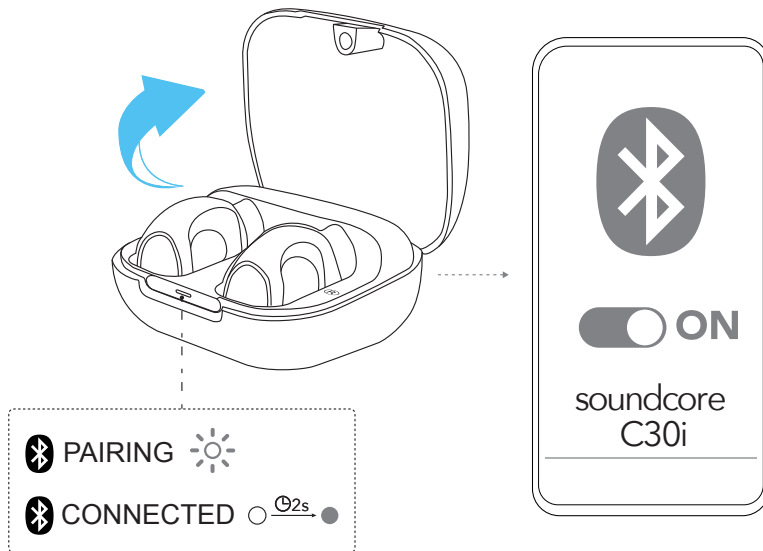
1. Touch Control Area
2. LED Indicator
3. USB-C Charging Port
4. Charging Case Button

WEARING



1. Hold your ears with one hand, and gently clamp the earbuds onto the upper part of your auricles. **Make sure the front side faces your ear canal and the back side with touch control rests behind your ear.**
2. Move the earbuds upwards or downwards until the earbuds fit securely and you can hear the sound well.

POWERING ON & PAIRING

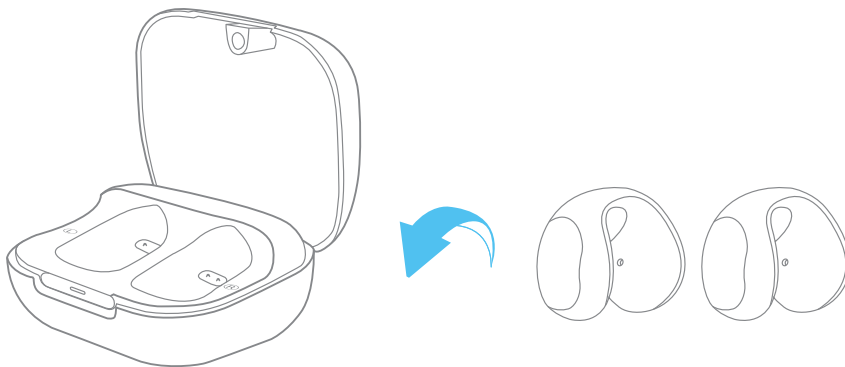


Open the charging case, the earbuds will automatically power on and enter Bluetooth pairing mode when connecting for the first time. Select "**soundcore C30i**" from your device's Bluetooth list.

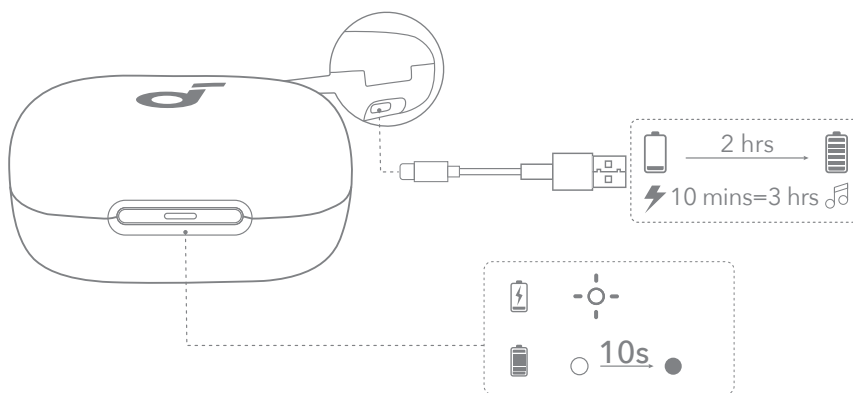
• When pairing, the LED indicator will start flashing white. After the pairing is successful, the LED indicator will stay on for 2 seconds and then go off.

CHARGING

1



2



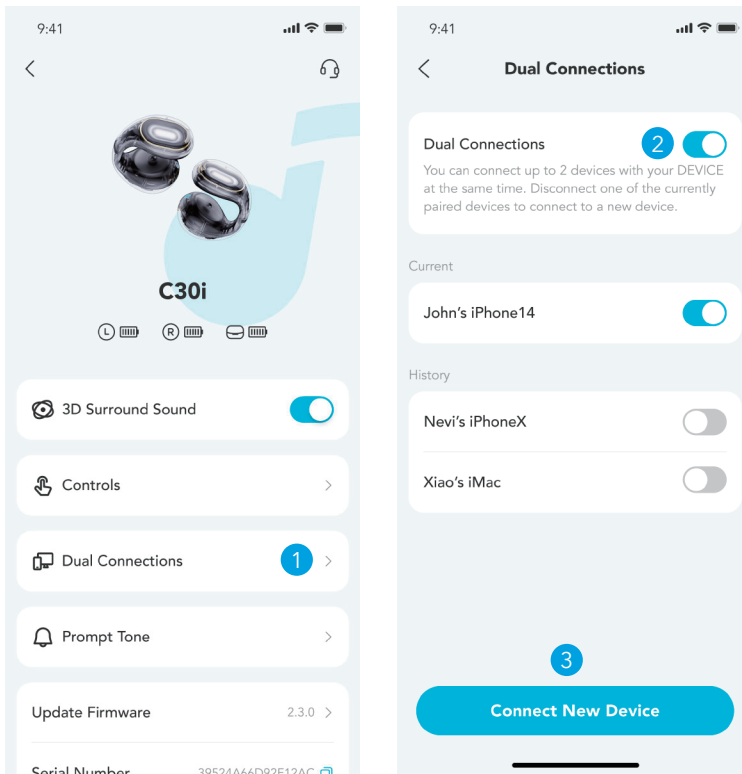
1. Place the earbuds in the charging case and close it.

• Fully dry off the earbuds and the USB-C charging port before charging.

2. Connect the charging case to a power supply by using the provided USB-C charging cable.

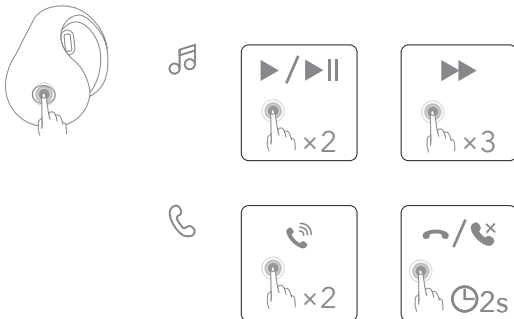
*A full battery recharge takes about 2 hours, and 10 minutes of charging offers 3 hours of playtime.

DUAL CONNECTIONS



To connect the earbuds with two Bluetooth devices at the same time, first open the soundcore app, go to settings and select **Dual Connections > Enable Dual Connections > Connect New Device**.

CONTROLS

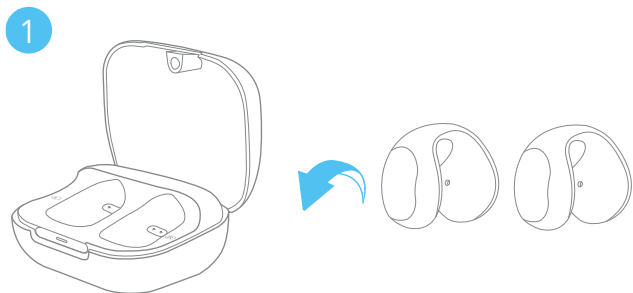


x1: Tap once x2: Tap twice 2s: Tap and hold for 2 seconds

*You can also customize controls in the soundcore app.

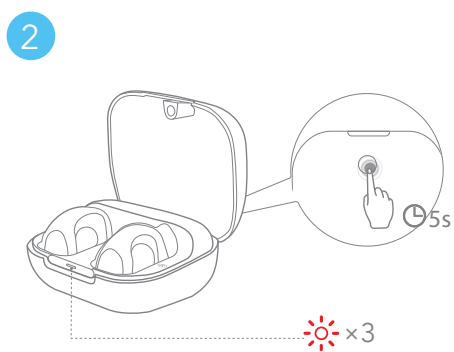
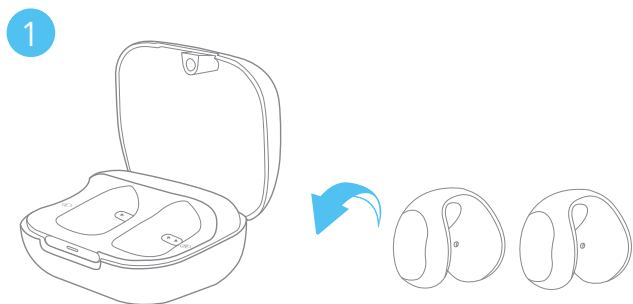
🎵	Play / Pause	Tap twice
	Next track	Tap three times
☎️	Answer a call	Tap twice
	Hang up	Tap and hold for 2 seconds
	Reject a call	Tap and hold for 2 seconds

POWERING OFF



To power off, return the earbuds to the charging case and close the case.

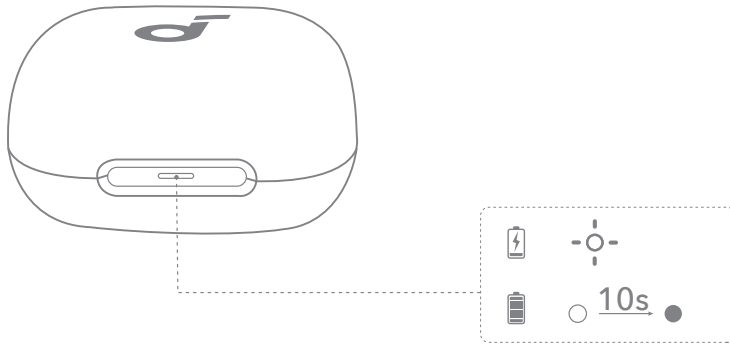
RESET



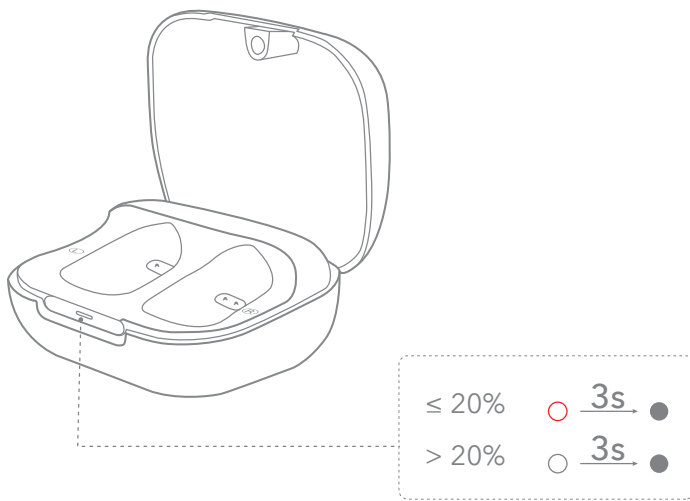
Place the earbuds in the charging case and leave the case open. Press and hold the charging case button for 5 seconds until the LED indicator flashes red slowly three times.

LED LIGHT GUIDE

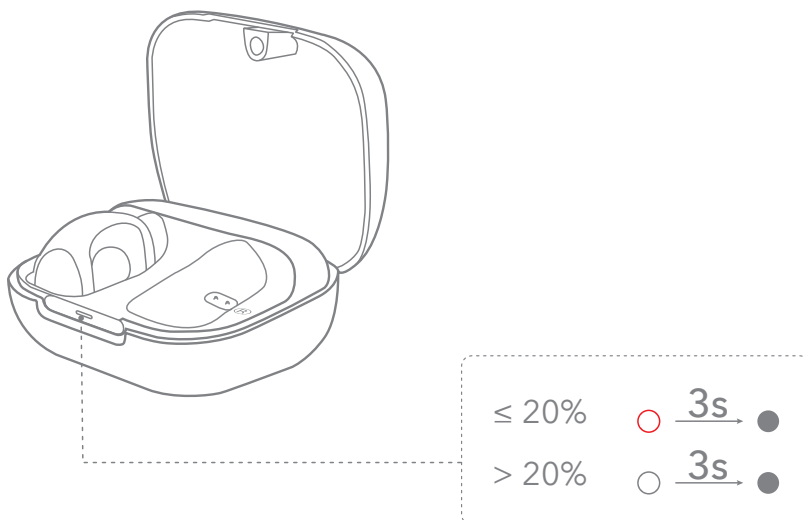
When you connect the charging case with a power source:



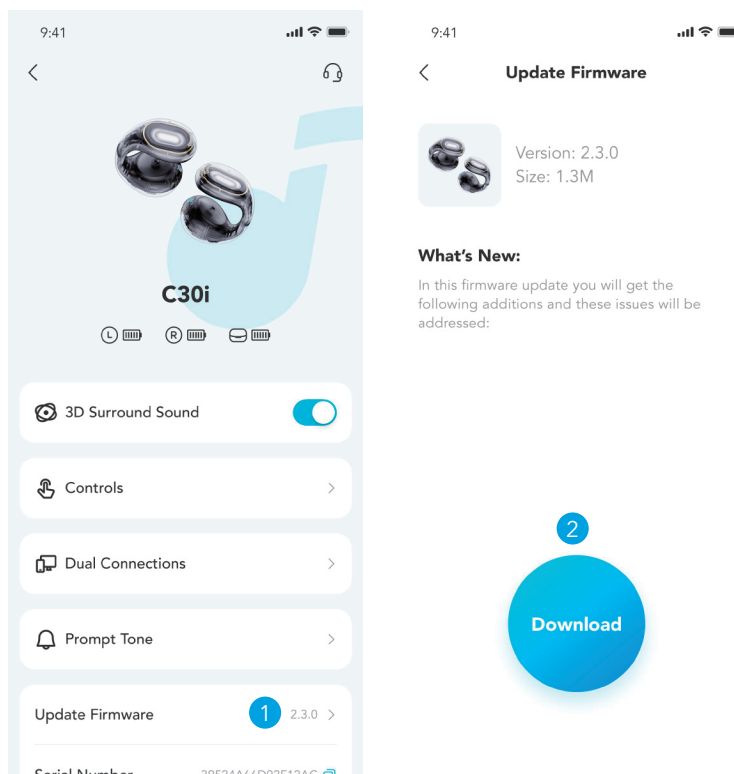
When both earbuds are out of the charging case, press the button underneath to check the battery of the charging case:



When either earbud is in the charging case, press the button underneath to check the battery of a single earbud:



FIRMWARE UPDATE



You will be informed once a new firmware version is detected when you connect the earbuds to the app. Ensure the earbuds are placed in the charging case and the case remains open until the firmware update is complete. During the update, ensure the earbuds are being charged and avoid any usage.

SPECS

Specifications are subject to change without notice.

Input	5V $\overline{\text{---}}$ 0.37A
Output	5V $\overline{\text{---}}$ 0.25A
Battery capacity	Earbud: 65mAh Charging Case: 470mAh
Playtime	10 hours / 30 hours
Charging time	2 hours
Driver unit	12mm & 17mm
Frequency response	20Hz~20kHz
Impedance	16 Ω
Waterproof rating (earbuds)	IPX4
Bluetooth version	5.3
Bluetooth range	15 m

Customer Service



service@soundcore.com
support.mea@soundcore.com (For Middle East and Africa Only)



support@anker.com (日本)
+1 (800) 988 7973 (US/Canada)
+44 (0) 1604 936200 (UK)
+49 (0) 69 9579 7960 (DE)
03 4455 7823 (日本)
+86 400 0550 036 (中国)
+82 02-1661-9246 (한국)
+971 529750842 (Middle East & Africa)
+971 8000320817 (UAE)
+966 8008500030 (KSA)
+965 22069086 (Kuwait)
+20 8000000826 (Egypt)
+61 3 8331 4800 (Australia)
+90 (850) 460 14 14 (Türkiye)
+8 (800) 511-86-23 (Russia)
+91 18003138831 (India)

Regulations and Compliance Information

Hereby, Anker Innovations Limited declares that this device is in compliance with The Product Security and Telecommunications Infrastructure (Security Requirements for Relevant Connectable Products) Regulations 2023. For the Statement of Compliance, visit the website: <https://uk.soundcore.com/pages/psti-related>.

Note: The 'x' of SN Code: xxxxxxxxxxxxxxxx is a variable, see below table.

Variable 'x'	Range of variable	Content
Seventh	0-9 or A-F	Denotes the hardware version which is not effected on the safety compliance.
Eighth	8,9,A,B,C...	Denotes the year, 8 means 2018, 9 means 2019, A means 2020, B means 2021, C means 2022, and so on.
Ninth and tenth	01,02,03...	Denotes weeks, 01 means the first week in this year, 02 means the secondary week in this year, and so on.
Eleventh	1-7	Denotes date, 1 means Monday, 2 means Tuesday..., 7 means Sunday and so on.
The last five	00001-99999	Denotes serial No.

1. Power consumption in standby mode: $\leq 0.5W$
2. Powermanagement: $\leq 20min$
3. Information of applicable adapter:
Brand: ANKER
Manufacturer: Anker Innovations Limited
Model: A2337
Input: 100-240Vac, 1A, 50-60Hz
Output: 5V \equiv 3A / 9V \equiv 3A / 12V \equiv 2.5A / 15V \equiv 2A / 20V \equiv 1.5A (30W Max)

Default Open Port: Classic Bluetooth

Port Description: After the device is powered on, Classic Bluetooth visibility (or pairing mode) is automatically enabled, providing Bluetooth pairing (or control) services. The Bluetooth service is disabled when the device is powered off.