



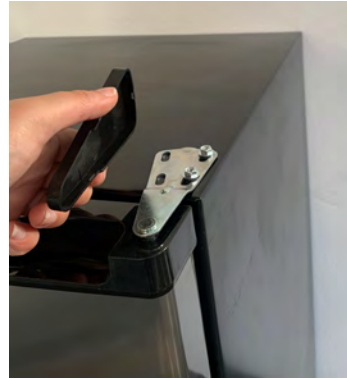
Renaissance Cooking Systems

Installation Instructions
SSFDLB / SSFDLRB Door Upgrade on REFR1A



RCSGasGrills.com
800 833-5998

1. Remove cap from hinge.



2. Unscrew and set aside 2 phillips head screws.



3. Carefully open fridge door and lift fridge door upward off of bottom hinge.

If needed set door to the side on soft surface.



4. Carefully unpack door upgrade and handle and place on soft surface.

5. Unscrew the 2 screws on handle (1a), one on each end. Locate 2 holes on door upgrade (2a), line up handle holes and door holes and screw in each screw from the inside of the door upgrade. (3a)



1a

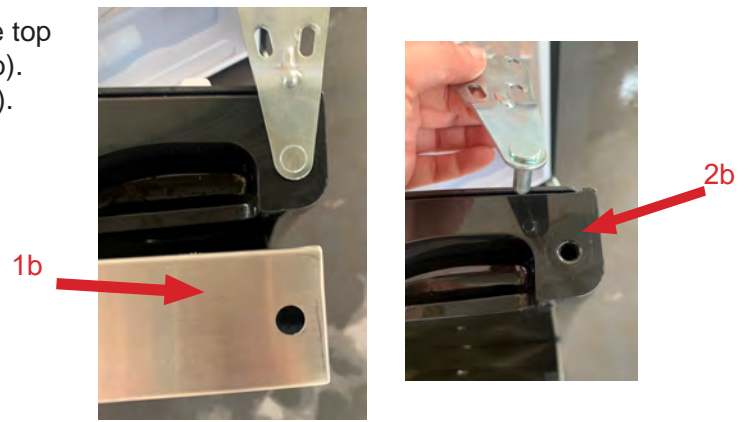


2a

3a



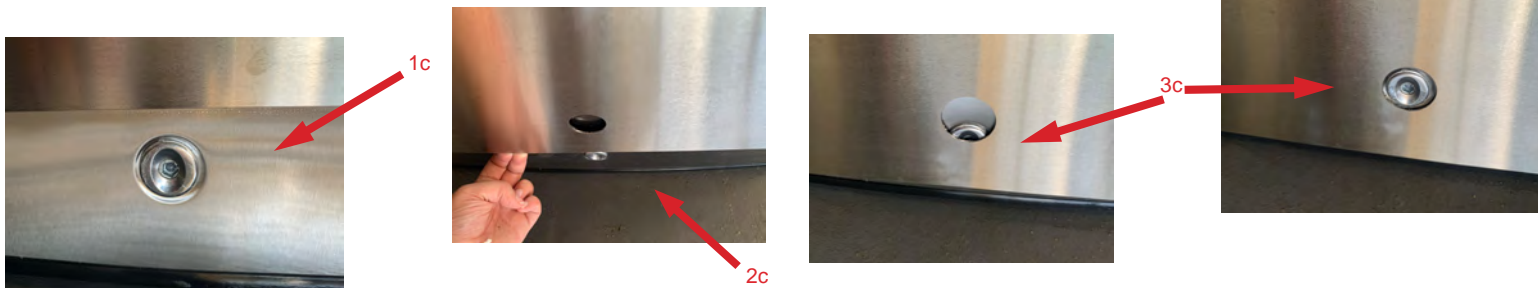
6. Once handle is attached to the door upgrade locate the top of the door upgrade (this will have a hole for the hinge (1b)). Remove hinge from top of original door and set aside (2b).



7. Line up bottom of door upgrade to top of original door. Slowly slide door upgrade down over original door. (If needed lay door down on soft surface)



8. As the door upgrade reaches the bottom of the door (1c) you will slightly pull door upgrade outward (2c) to slide over lock and bottom of black plastic (3c).



9. Once door upgrade has completely covered the original door slide back onto bottom hinge (1d) and close fridge. Reattach top hinge by sliding removed hinge (step 6) into hole on top of door (2d). Screw in the 2 phillips head screws (3d) and place plastic cap back on hinge (4d).

