

APP



Google Play and the Google Play logo are trademarks of Google Inc.



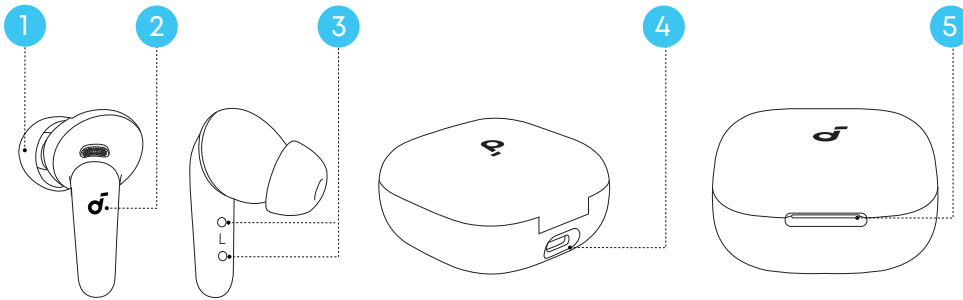
Apple and the Apple logo are trademarks of Apple Inc.



Download the soundcore app to experience ambient sound modes, EQ settings, Spatial Audio, LDAC, AI Translation, HearID sound, firmware updates, and more exciting features.

If your earbuds cannot connect to the soundcore app, try re-installing the app or updating it to the latest version available in your mobile app store.

OVERVIEW



1. Ear Tip

- M-sized ear tips come attached to the earbuds.

2. Touch Control Area

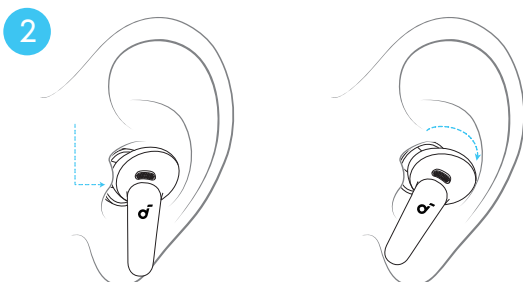
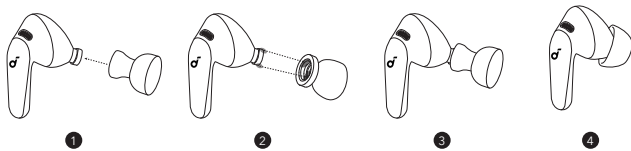
- Tap the control area on the earbud stems to manage different functions.

3. Earbud Charging Contacts


4. USB-C Charging Port

5. LED Light Strip

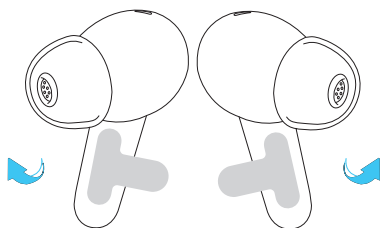
WEARING GUIDE



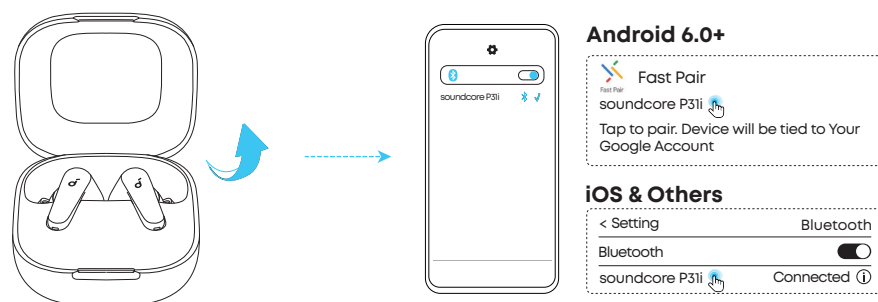
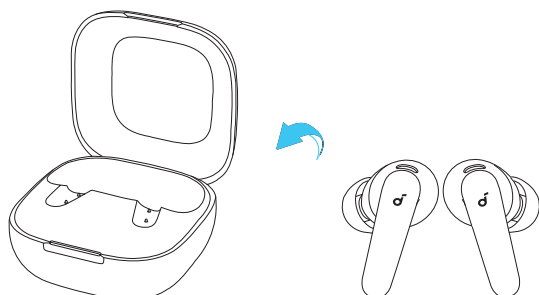
1. Try different ear tips for better fit, comfort, and stability.
Note: M-sized ear tips come attached to the earbuds.
2. Gently place the earbuds into your ear canal and rotate them for a snug fit.
3. Take a fit test in the soundcore app to ensure you get the best active noise cancelling performance.

 Dust, earwax, or other debris can accumulate in the earbuds. To maintain optimal sound quality, regularly clean your earbuds. Use a cotton swab slightly moistened with rubbing alcohol to gently wipe the metal mesh filter under the rubber ear tips. Ensure the alcohol on the metal mesh filter has completely dried before using the earbuds again.


POWERING ON AND PAIRING



1. Remove the protective films on the earbuds.

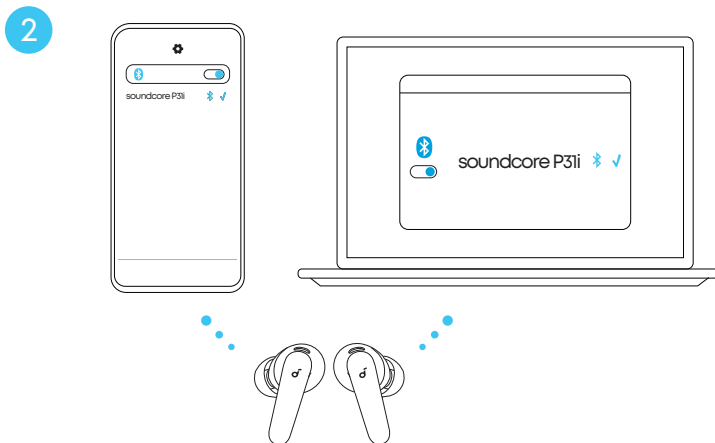
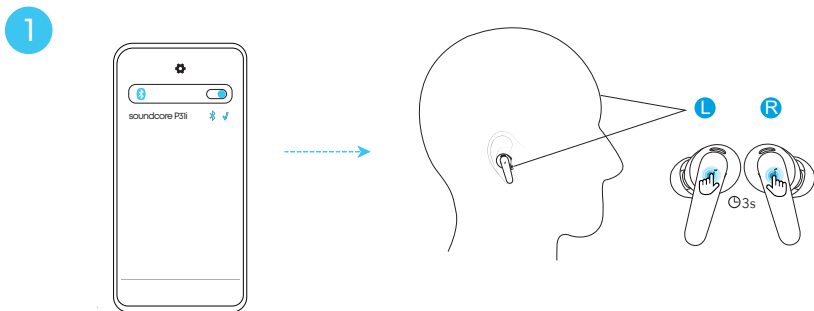


2. Place the earbuds back in the charging case and close the case. Then open the lid. The earbuds will automatically power on and enter Bluetooth pairing mode. Select "**soundcore P31i / R60i NC**" from your device's Bluetooth list.

 Product names vary in different sales regions.

Google Fast Pair Supported: Enjoy instant pairing with your Android smartphone (running Android 6.0 or above) using Google Fast Pair.

DUAL CONNECTIONS & MANUAL PAIRING



Dual Connections is enabled by default.

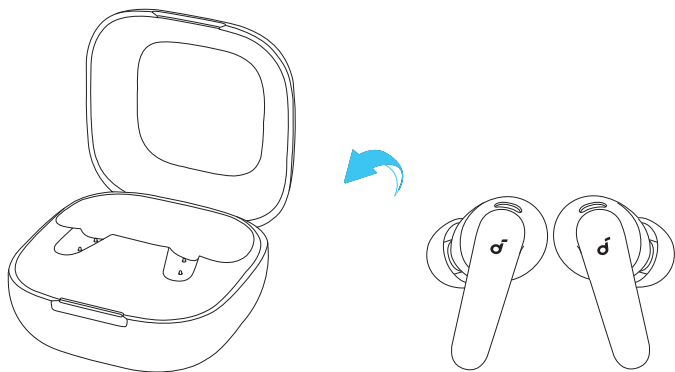
To connect a second device while one device is already connected, tap and hold the control area on both earbud stems for 3 seconds until you hear a voice prompt indicating the earbuds are in pairing mode. You can then proceed to pair with the second device.



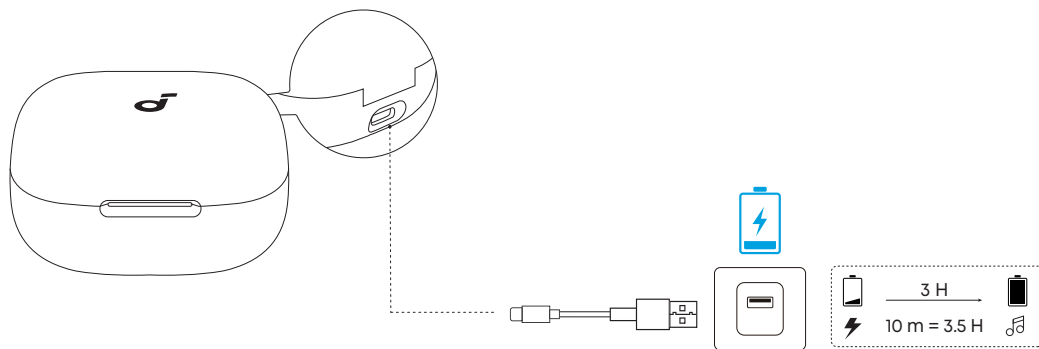
Manual pairing and Dual Connections pairing follow the same procedure.

Dual Connections can be disabled in the soundcore app. Tap the gear icon in the upper-right corner to access **Settings**, then tap the toggle switch for **Dual Connections** to turn it off.

CHARGING



1. Place the earbuds in the charging case and close it.
Fully dry off the earbuds and the USB-C port before charging



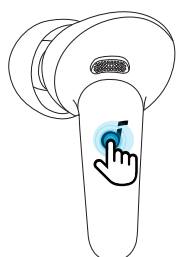
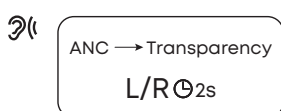
2. Connect the charging case to a power supply using the provided USB-C charging cable.



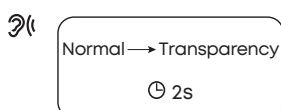
Fully charging the case with the earbuds inside takes about 3 hours via cable. A quick 10-minute charge in the case gives the earbuds up to 3.5 hours of playtime.

CONTROLS

TWS



MONO



AMBIENT SOUND

You can select from Noise Cancellation, Normal, or Transparency modes in the soundcore app.

- **Noise Cancellation:** Optimizes noise cancellation by adjusting to your ears and environment.
- **Normal:** Enjoy balanced sound without noise cancellation.
- **Transparency:** Stay aware of your surroundings while listening to music.

AI ASSISTANT

Before Use:

- Uninstall any previous versions of the soundcore app on your device and download the latest version.
- To use the AI assistant, download the soundcore app and keep it connected to your earbuds. On Android devices, adjust system settings to allow the app to run in the background.



- The AI assistant prioritizes your privacy and data security.
- AI-generated responses are for reference only and may contain inaccuracies, especially regarding political or sensitive topics. Please use your discretion.
- The images provided are for illustration purposes only.

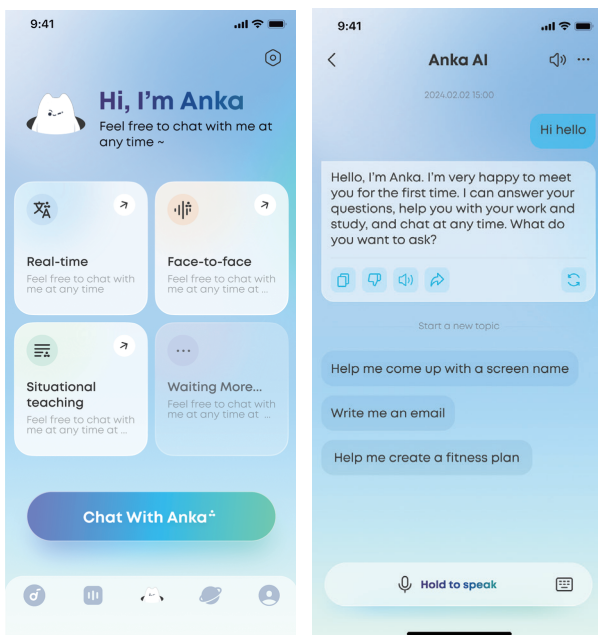
What Anka Can Do for You

| Function | What It Does | Example Command (Say the following to Anka after activating with "Hey Anka") |
|-------------------------|--|---|
| Answering Questions | Acts as your portable encyclopedia—ask any question anytime. | "Why do giraffes have such long necks?" |
| Casual Conversation | Chats with you like a friend would and helps you relax. | "Tell me a joke." |
| Information Aggregation | Provides you with daily news and updates. | "Tell me the latest tech news for today." |
| Information Lookup | Checks the weather, the latest match scores, and more. | "What's the weather like in New York today? Will I need an umbrella when I go out?" |



Some voice commands may not work due to app limitations.

How to Access the Feature



In the soundcore app, go to **Anka Page > Chat With Anka**.

AI TRANSLATION



Note: Feature paths and interface visuals may change with software updates. For the most accurate guidance, please refer to your latest app version.

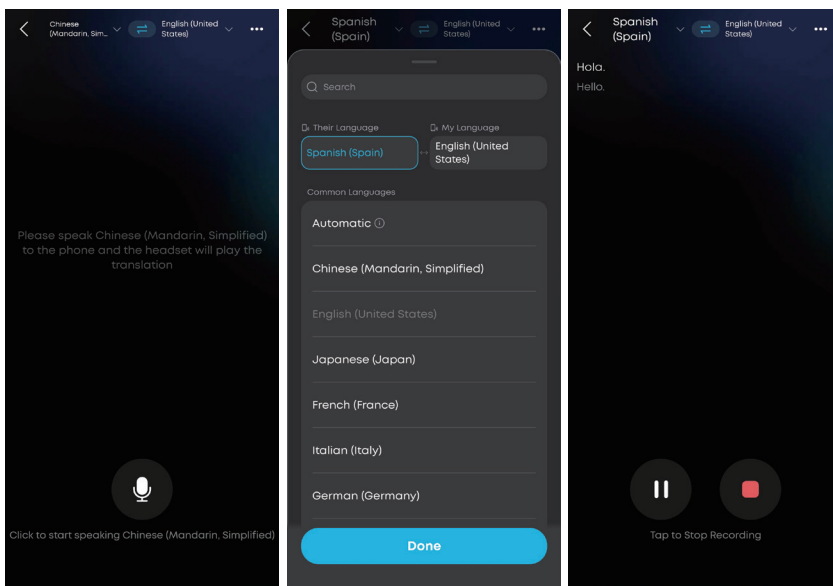
Before Use:

- Please upgrade to the latest version of the soundcore app and ensure that your earbuds are connected to the app.
- Disable Dual Connections.

Real-Time Translation

In settings where you're exposed to content in a foreign language for extended periods (e.g., lectures, classes), real-time translation delivers continuous text display and audio playback of the translated content with almost no lag.

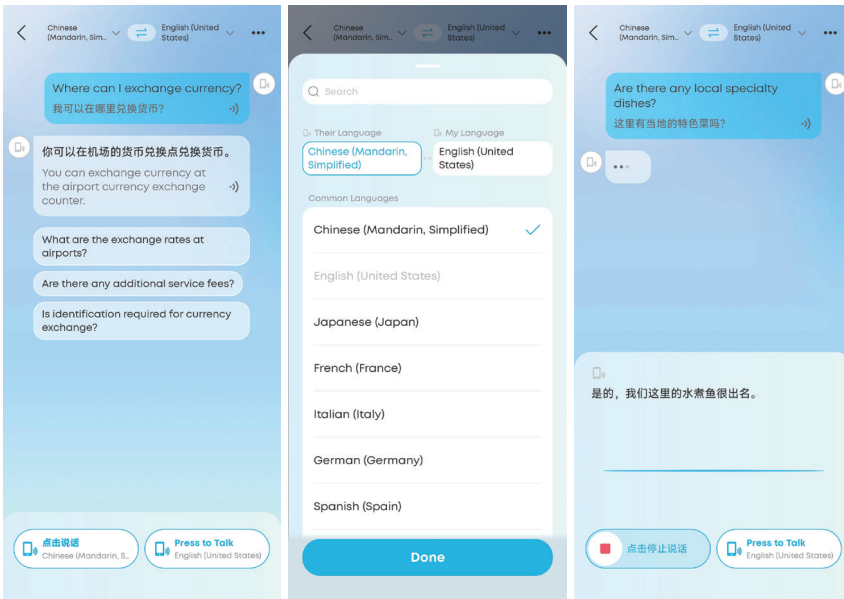
In the soundcore app, go to ***Anka page***, then tap ***Real-Time Translation***. Make sure your earbuds are connected to the app.



1. Tap **Real-Time Translation**.
2. Tap the language section at the top of the page, then select **Their Language** and **My Language**.
3. Tap the microphone button to start recording.

Face-to-Face Translation

In the soundcore app, go to ***Anka page***, then tap ***Face-to-Face Translation***.



When your earbuds are connected to the app, follow the steps below to try out Face-to-Face Translation.

1. Tap the language section at the top of the page, then select **Their Language** and **My Language**.
2. Tap the bottom-right button and speak into your earbuds. The translation will play from your phone.
3. Tap the bottom-left button and speak into your phone. The translation will play from your earbuds.



This feature works even if your earbuds aren't connected to the app. Just speak into your phone, and the translation will play through its speaker.

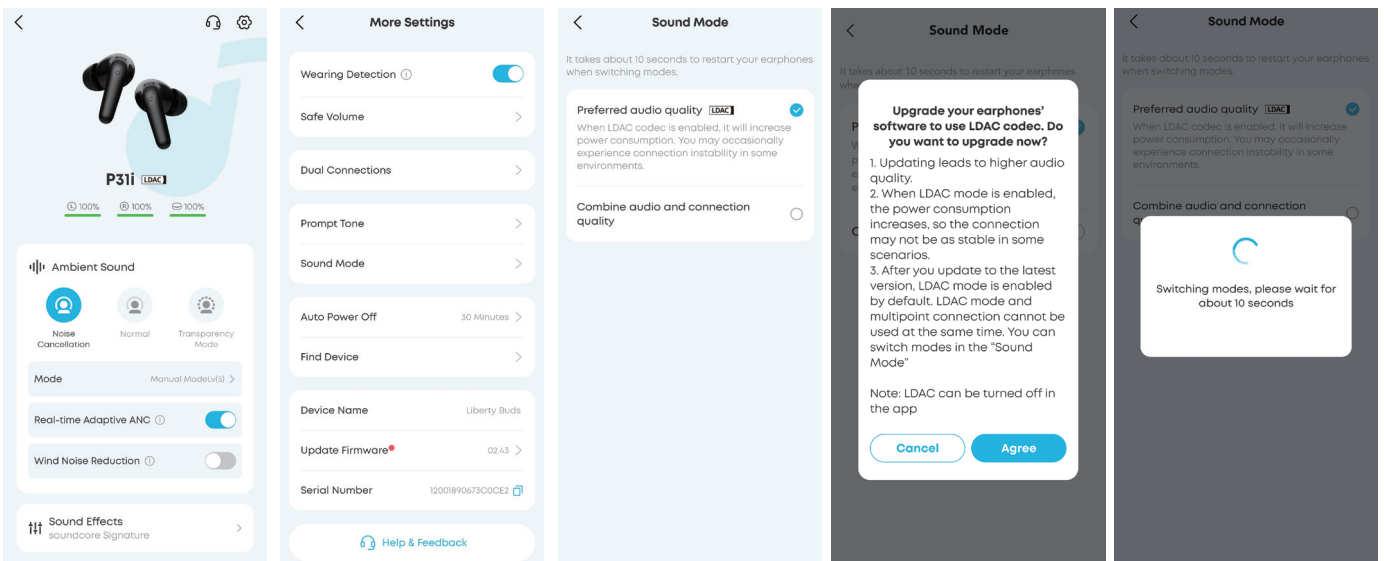
LDAC

To use the LDAC codec, your device must be running Android 8.0 or higher.

LDAC offers higher sound quality but uses more power, which may reduce battery life.

For a stable Bluetooth connection, enable LDAC in low-interference environments.

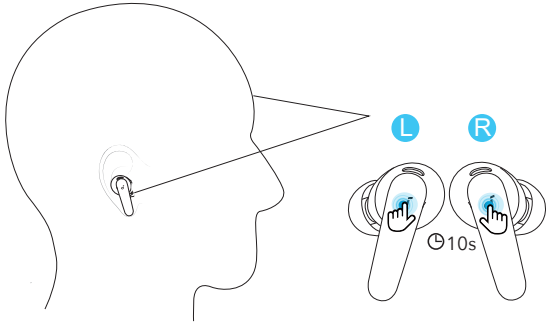
Note: UI images are for illustrative purposes only; actual display may vary by software version. LDAC is only available on Android devices.



In the soundcore app:

1. Select **Sound Mode**.
2. Tap **Preferred audio quality**.
3. Tap **Agree** to proceed.
4. Switching audio codecs takes about 10 seconds. You may be prompted to update the firmware if a new version is available.

RESET

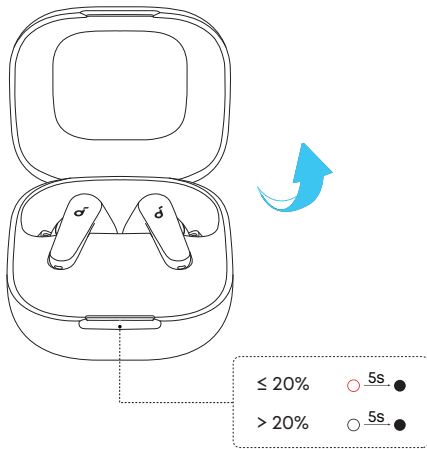


You might need to reset the earbuds if you experience connectivity issues.

Tap and hold the touch control area on both earbuds for 10 seconds until you hear a prompt tone.

LED BEHAVIOR

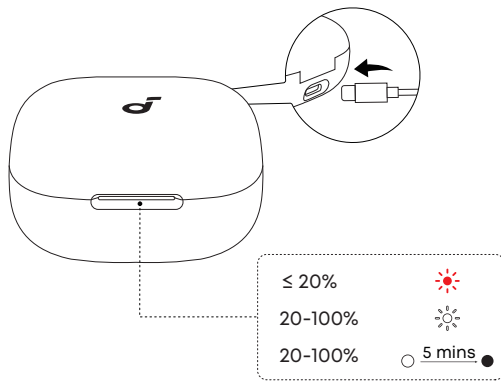
Check the Battery Level



The LED light strip shows the battery level whenever you open the charging case.

| Battery Level | LED Behavior |
|---------------|--|
| 0-20% | The LED light strip turns solid red for 5 seconds and then goes off. |
| 20-100% | The LED light strip turns solid white for 5 seconds and then goes off. |

Charging



When charging, the LED behavior varies as the battery reaches different levels.

| Battery Level | LED Behavior |
|---------------|--|
| 0-20% | The LED light strip breathes red. |
| 20-100% | The LED light strip breathes white. |
| 100% | The LED light strip turns solid white for 5 minutes and then goes off. |

FIRMWARE UPDATE

When you connect your earbuds to the app, you'll be informed if a new firmware version is available. Ensure the earbuds are placed in the charging case and the lid remains open until the firmware update is complete. During the update, ensure the earbuds are being charged and refrain from using them.

SPECS

Specifications are subject to change without notice.

| | |
|--|--|
| Input | Earbud (Single): 5V \pm 0.18A Charging Case: 5V \pm 0.5A |
| Output | Charging Case: 5V \pm 0.36A |
| Battery Capacity | Earbud (Single): 60mAh Charging Case: 800mAh |
| Playtime (with ANC Off) | 10H / 50H |
| Playtime (with ANC On) | 8H / 40H |
| Charging Time | Full Charging Time for Earbuds: 1H Full Charging Time for Charging Case: 3H |
| Driver Unit | 11 mm |
| Frequency Response | 20~20kHz |
| Impedance | 14.2 Ω |
| Waterproof & Dustproof Rating (Earbuds Only) | IP55 |
| Bluetooth Version | 6.1 |
| Bluetooth Range | 10 m |

CUSTOMER SERVICE

service@soundcore.com

uk.support@soundcore.com (UK)

ie.support@soundcore.com (Ireland)



support.india@anker.com (India)

support.mea@anker.com (For Middle East and Africa Only)

support@anker.com (日本)

support.kr@anker.com (한국)

ced-cn@anker.com (中国)

+1 (800) 988-7973 (US/Canada)

+44 (0) 1604 936 200 (UK)

+49 (0) 69 9579 7960 (DE)

03 4455 7823 (日本)

+86 400 0550 036 (中国)



+82 1666-8470 (한국)

+971 8000 320 817 (UAE)

+966 8008 500 030 (KSA)

+965 22069086 (Kuwait)

+20 8000 000 826 (Egypt)

+90 (850) 460 1414 (Türkiye)

+91 8000 504 414 (India)

Note: The 'x' of SN Code: xxxxxxxxxxxxxxxx is a variable, see below table.

| Variable 'x' | Range of variable | Content |
|--------------------|-------------------|---|
| Eighth | 0-9 or A-F | Denotes the hardware version which is not effected on the safety compliance. |
| Ninth | 8,9,A,B,C... | Denotes the year, 8 means 2018, 9 means 2019, A means 2020, B means 2021, C means 2022, and so on. |
| Tenth and Eleventh | 01,02,03... | Denotes weeks, 01 means the first week in this year, 02 means the secondary week in this year, and so on. |
| Twelfth | 1-7 | Denotes date, 1 means Monday, 2 means Tuesday..., 7 means Sunday and so on. |
| The last five | 00001-99999 | Denotes serial No. |

Hereby, Anker Innovations Limited declares that this device is in compliance with The Product Security and Telecommunications Infrastructure (Security Requirements for Relevant Connectable Products) Regulations 2023. For the Statement of Compliance, visit the website: <https://uk.soundcore.com/pages/psti-related>.

Default Open Port: Classic Bluetooth

Port Description: After the device is powered on, Classic Bluetooth visibility (or pairing mode) is automatically enabled, providing Bluetooth pairing (or control) services. The Bluetooth service is disabled when the device is powered off.