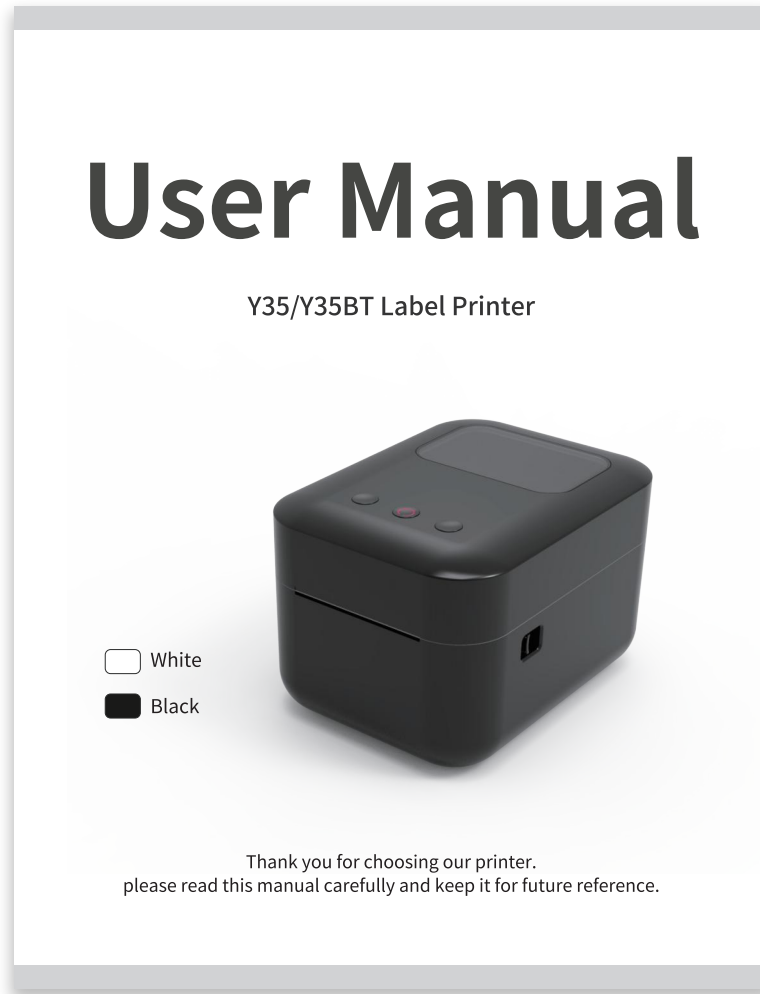


公差等级	基本尺寸分段(mm) GB/T1800.3-1998 (基本尺寸的标准公差)										
	≤3	>3~6	>6~10	>10~18	>18~30	>30~50	>50~80	>80~120	>120~180	>180~250	>250~315
IT8	0.014	0.018	0.022	0.027	0.033	0.039	0.046	0.054	0.063	0.072	0.081
IT9	0.025	0.03	0.036	0.043	0.052	0.062	0.074	0.087	0.10	0.115	0.13
IT10	0.04	0.048	0.058	0.07	0.084	0.10	0.12	0.14	0.16	0.185	0.21
IT11	0.06	0.075	0.09	0.11	0.13	0.16	0.19	0.22	0.25	0.29	0.32
IT12	0.10	0.12	0.15	0.18	0.21	0.25	0.30	0.35	0.40	0.46	0.52
IT13	0.14	0.18	0.22	0.27	0.33	0.39	0.46	0.54	0.63	0.72	0.81
IT14	0.25	0.30	0.36	0.43	0.52	0.62	0.74	0.87	1.00	1.15	1.30

标记	处数	变更内容	变更人	变更日期
①				
②				
③				



技术要求:

- 1、尺寸: 100*130mm
- 2、材质: 120铜板彩印_骑马订
- 3、颜色:
- 4、产品字体印刷清晰、无破损、脏污、缺页等不良现象;
- 5、此页为技术要求及图框说明, 不需要印刷;

签核	日期	比例	1:1	产品型号	Y35
设计	张泽民	20250923	图纸	A4	零件名称
校对	陈仰贤	20250923	单位	mm	零件图号
审核	潘锦全	20250923	版本	1.0	零件材质
批准	李海洪	20250923	视角		表面处理

厦门印向未来科技有限公司



User Manual

Y35/Y35BT Label Printer



White

Black

Thank you for choosing our printer.
please read this manual carefully and keep it for future reference.

Directory

1. Quick Setup Guide.....	01
2. Packing list	02
3. Printer connection	03
4. Label loading and calibration	05
5. Make Windows Settings via USB.....	07
5.1. Driver Installation	07
5.2 Printer Preferences.....	09
6. Set up your MAC via USB.....	11
6.1. Driver Installation	11
6.2. Printer Preferences.....	13
7. Set up the Chromebook via USB.....	15
8. Settings of smartphone applications	17
9. User Prompt	20
10.LED status	21
11. Instructions for the feeding button	22
12. Safety Precautions	23
13. Maintenance.....	23
14. Specification Description.....	24
15. Disposal	25
16. Please note.....	25
17. Contact us	26
18. FCC WARNING	27

Quick Setup Guide

Congratulations on purchasing our printer. We are your loyal business partner, providing commercial solutions for batch label printing.

Please take some time to read this user guide, as improper operation may lead to poor print quality, a decline in user experience, and even damage to your printer or cause personal injury.

The Y35 is a thermal label printer that uses thermal label media and does not require ink, toner or ribbons. It can print various labels and is suitable for uses such as logistics, pricing, barcodes, QR codes, shipping labels, badges, etc.

Please read all the instructions in the original manual of the thermal label printer carefully before operation. We reserve the right to interpret the user manual. The appearance of the product shall be subject to the product you receive. Please excuse us. If there are any technical or software updates to our products, we will no longer notify you.

Packing list

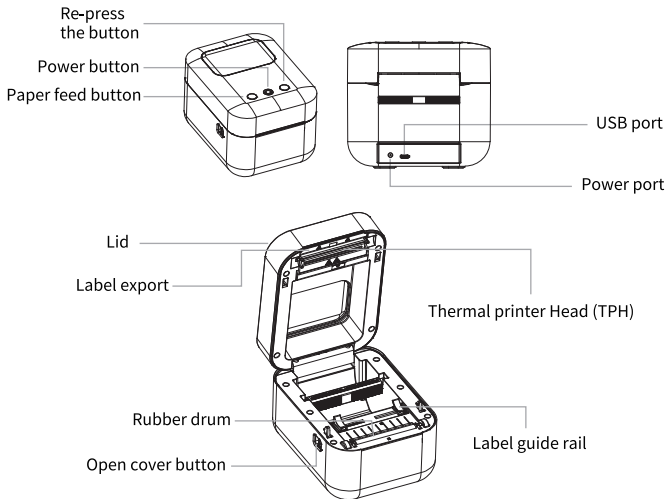
Packing list:

1x label printer

1x User Guide

1x USB printer cable

1x power cord and adapter

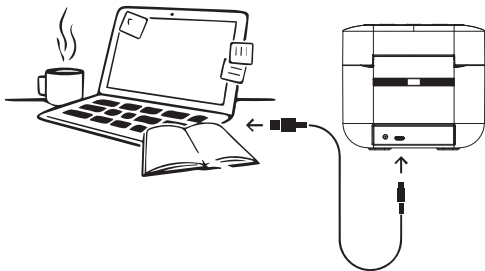


After the printer finishes printing, the thermal print head (TPH) may be very hot. Do not touch the print head or the components around it after printing.

Printer connection

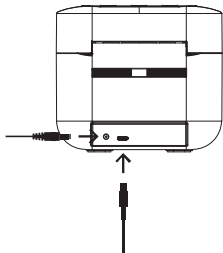
1. Connect the USB cable.

(Special note: For Windows users, please connect to the same USB port on your computer to avoid unnecessary printer duplicates in the system.)

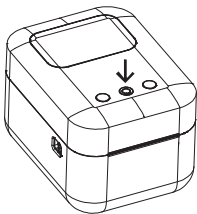


Note: For Mac users, you can purchase the USB-C to USB adapter at a discounted price in our store.

2. Make sure the power adapter is securely connected, and then connect the power cord to the power port and socket of the printer.



3. Press and hold the power button for 3 seconds. You will hear a beep, indicating that the device has been turned on, and at the same time, the indicator light will flash



Label loading and calibration

Y35 can handle labels of various sizes, and you need to learn your label attributes before using it for the first time.

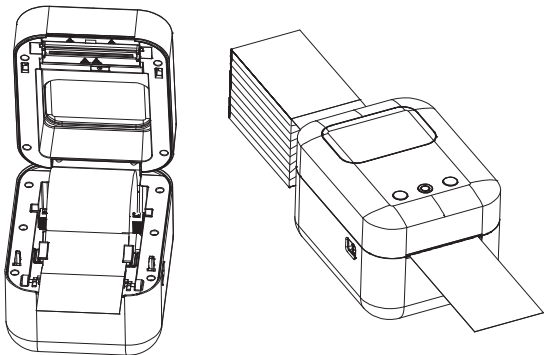
To start automatic label loading and run intelligent label calibration, please follow the steps below

1. Start up

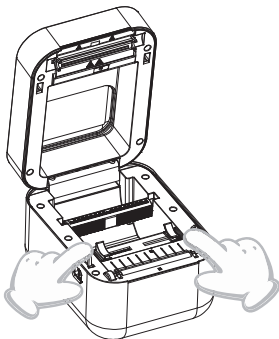
Press the power button for three seconds and hear a beep. Then wait for about five seconds until the printer initialization is complete.

2. Automatic label loading

Insert the label from the back of the printer or put the roll of paper into the printer and close the lid. The printer will load the label and move forward and backward, then stop when the green light comes on. Throughout the entire process, no labels will be wasted.

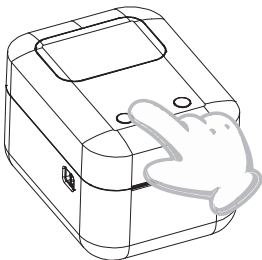


It is recommended that before the label is pushed in, if necessary, the label rail be adjusted to match the width of the label.



3. Smart label calibration

Press and hold the paper feed button for about 3 seconds until you hear a beeping sound, then release it. The label will move back and forth several times to calibrate the label size. After that, you can start printing.



Since the printer needs to measure the length of the thermal paper, at least three labels are required to complete this process.

Set up Windows via USB

5.1 Install Windows via USB

1. Before installation, please ensure that the printer is turned on and the USB cable is connected to your computer.
2. Scan qr code or visit <https://help.flashlabel.com> to download drivers and watching video installation.

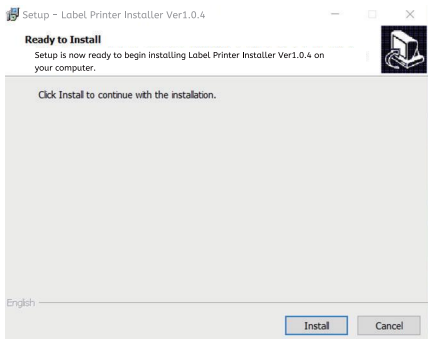


Scan the QR code to download the Windows driver

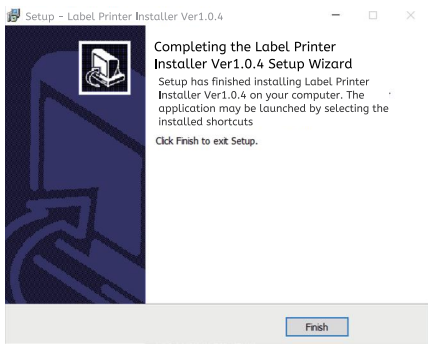
3. Follow the steps below to complete the driver installation on Windows
 - 1) Open the "LabelPrinter-Windows-Driver-Latest.exe" file and double-click to start the installation process.

If the file name is "Labelprinter-Windows-driver-Latex.zip", you need to extract it to the.exe file.

- 2). Click "Install" and follow the instructions on the screen.



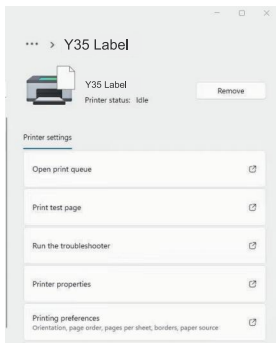
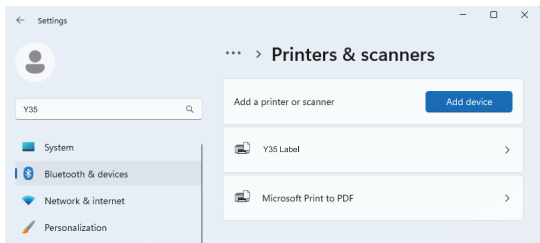
3).Click "Next" and "Finish" to complete the driver installation.



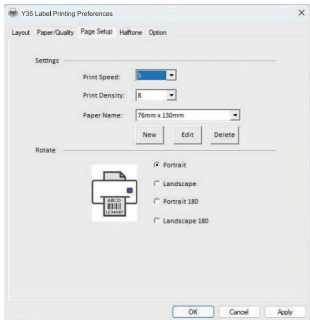
5.2 Printer Preference Settings

Take Windows 11 as an example:

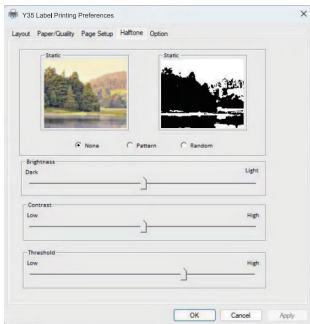
1. Enter the "Settings" -> "bluetooth and equipment" -> "printers and scanners, find and click on the printer" y "->" print preferences"



2. Click the "Page Settings" TAB, and you can change the paper size, print speed, print density and rotation.



3. Click on the "Halftone" page, and you can change the image dithering algorithm to make your image or the "COD" letters print clearly.



Set up your MAC via USB

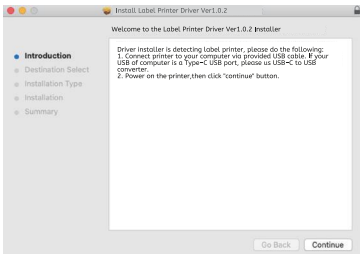
6.1 Macos is installed via USB

1. Before installation, please ensure that the printer is turned on and the USB cable is connected to your computer.
2. Scan qr code or visit <https://help.flashlabel.com> to download drivers and watching video installation.



Scan qr code or visit <https://help.flashlabel.com> to download drivers and watching video installation.

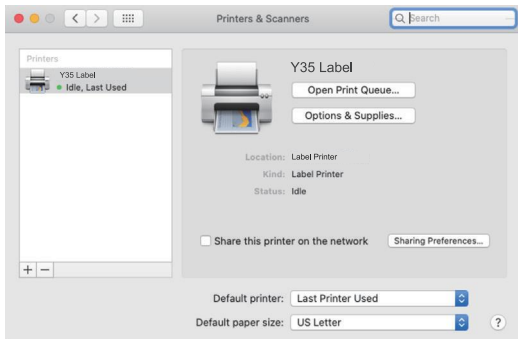
3. Follow these steps to complete the driver installation on Macos:
 - 1) Double-click the file "LabelPrinter-Mac- Driver - Latest Version.pkg".
 - 2) Click "Continue" and follow the instructions on the screen to complete.



4).Open "System Preferences" and click on "Printers and Scanners".

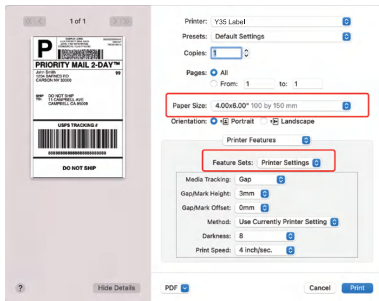


5).Turn on the printer power. You can see "Y35 Label" in the list. Now you can print the label.

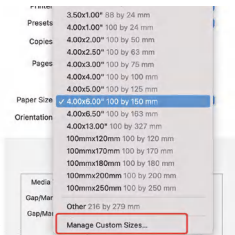


6.2 Printer Preference Settings

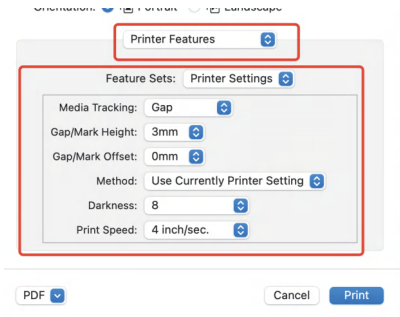
1. Open the PDF file with preview -> Click "File" -> "Print" -> Select the printer "Y35 Label".



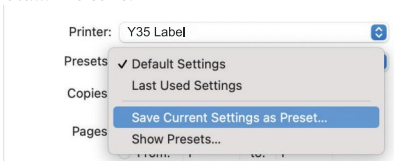
2. Click "Paper Size" -> Select the corresponding paper size according to the size of the loaded label. If the required size is not listed in the list, please click "Manage Custom Sizes", enter the width and height, and then click "OK" (if you want to change the loaded label size to another size before printing, please press the button to calibrate first.)



3. Click "Preview" -> "Printer Functions", and then you can change the printer's Settings, such as speed, darkness and rotation.



4. After changing the Settings, you need to click "Save current Settings as default...." To save.



5. Click "Print" to start printing.

Set up the Chromebook via USB

7.1 Set up the Chromebook via USB

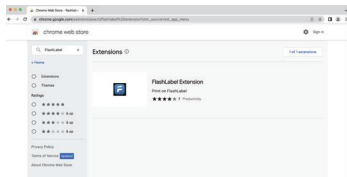
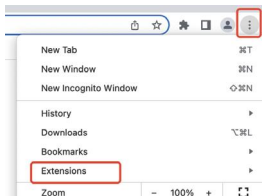
1. Before installation, please ensure that the printer is turned on and the USB cable is connected to your computer.
2. Scan qr code or visit <https://help.flashlabel.com> to download drivers and watching video installation.



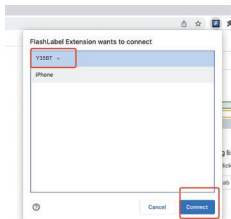
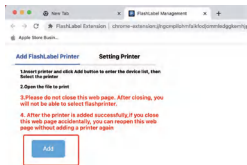
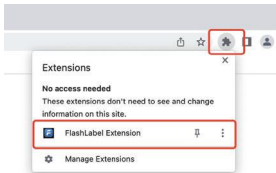
Scan the QR code to watch the video on installing the ChromeBook driver

3. Follow the steps below to complete the driver installation on Chrome OS

1). Search for and add the "Flashlabel" extension in the Chrome Web Store.



2).Click the expansion icon ->
Select 'FlashLabel '-> Click "Add"
-> Select "Y35" -> Click "Connect"



2).Open a PDF file with Chrome Browser-> Choose "FlashLabel" and your paper size-> Click "Print".



Smartphone application Settings

Wireless function



Scan this QR code to learn how to set up the APP on iPhone or iPad



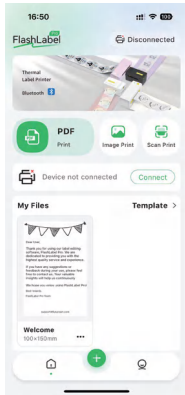
Scan this QR code to learn how to set up the application on Android

Before using the printer, please install the "FlashLabel Pro" app from the AppStore or Google Play. You can also scan the QR code below to install the "FlashLabel Pro" application page

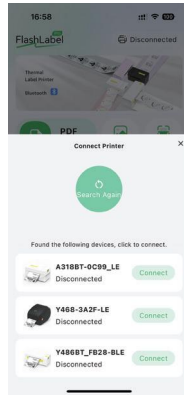


*On the home page of the "FlashLabelPro" application, after clicking on the templates, you will obtain a vast number of templates.

2. Open "FlashLabel Pro", run the application and click the red printer icon in the upper right corner to use the wireless device.



3. Connect wireless devices for pairing



► **Note:**

Android users need to enter "0000" in the Bluetooth settings for Bluetooth pairing before connecting to the printer.
(Setting < Bluetooth < Choose the printer < Pair)



4. Load files for printing (PDF, photos, custom labels can be printed)

User prompt

1. When you load the label, the peel surface should face upwards. Otherwise, it will result in blank printing.



2. Make sure there are no particles on the label surface to avoid damaging the TPH (thermal printer head).

3. For Windows users, please continue to use the same USB port on your computer to avoid generating unexpected copies of the printer on your computer.

4. The default label size of the Y35 printer is 76mmx130mm. Each time you change the label size, please run the intelligent label calibration process before printing.

5. If labels keep popping up unexpectedly, simply press the paper feed button on the far left to pause the printer and clear the print task from your computer.

6. If there are white spots on the printed label, it indicates that the printer head needs to be cleaned. Please stop printing and clean the TPH (hot printer head) after it has cooled down to avoid burns.

7. When the label gets stuck unexpectedly, please open the cover and then remove the stuck label slowly and patiently. The printer will resume normal operation after cleaning.

LED status

Lighting status	Description	Solution
green	Normal	Ready to print
blue	Wireless connection	Get ready to use wireless printing
Rapidly flashing red (once per second)	This happens when the lid is not closed	Close the lid correctly
Slowly flashing red (once every two seconds)	This is caused by the shortage of paper. Incorrect paper size	Reload the tag; Run the automatic label calibration
Flashing Red and Green(Every second)	This occurs when the print head overheats.	When it cools down, the printing task will resume automatically.
The lights turned off and the buzzer sounded	Low voltage	Switch to the 24-volt adapter

If you have any questions, please feel free to contact us at any time. You can search more common problems on our website: <https://help.flashlabel.com>
Or send an email to Help@FlashLabel.com



Scan the QR code to visit help.flashlabel.com

Instructions for the supply button

1. Left paper feed button: Enter blank page/Pause/continue

(1) When the printer is ready and there are no tasks to be processed, press the paper feed button once, and the printer will automatically feed a blank page.

(2) When the printer is running, pressing the paper feed button once will pause the task, and pressing it again will resume the task. Although this is not a recommended practice, if you urgently need to stop an unnecessary printing task, you might as well simply turn off the power and don't forget to cancel the corresponding printing task on your computer.

(3) Press and hold the paper feed button for about 3 seconds until you hear a beeping sound. The printer will then execute the intelligent label calibration process. We suggest carrying out this process every time the label size is changed.

(4) Press and hold the paper feed button for about 5 seconds until you hear two beeping sounds. The printer will print a test page. If the test page looks normal, it indicates that the printer head is working properly.

(5) Press and hold the paper feed button for about 15 seconds until you hear five beeps. This will restore the printer to its factory Settings. This process is harmless to the printer and can be used to try to recover the printer from an unknown error.

2. Press and hold the middle power button for about 3 seconds (to turn on/off)

(1) When the device is off, press and hold for about 3 seconds to turn it on

(2) When the device is on, press and hold for about 3 seconds to turn it off

3. Briefly press the re-print button on the right to print the content of the most recent print. If no content is printed after the device is turned on, it will be invalid.

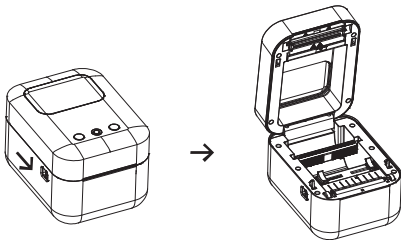
Safety Precautions

1. Do not touch the printer nozzle after use.
2. Do not disassemble or repair the equipment by yourself.
3. Only use approved accessories.
4. Keep the printer away from water, fire or other objects that may damage the components.
5. Keep the printer away from children.
6. If any abnormal situation that may cause electric shock or fire is found, do not use the printer.
7. When not in use for a long time, please unplug the power supply.

Maintenance

Printer nozzle cleaning steps:

- (1) Please ensure that the printer has been powered off and cooled down before cleaning
- (2) Push the lid opening buttons on both sides simultaneously;



- (3) Gently wipe the thermal print head with a printer nozzle cleaning wet wipe (do not use water or other liquids).

Specification description

Model	Y35
Printing method	Direct thermal
Interface	USB cable, Bluetooth (optional)
Resolution	203dpi
Maximum printing speed	150mm/s
Input power	24V \approx 1.5A
Net weight	790g
Weight	1145g \pm 5g
TPH print life	50km
Maximum paper holding width (including backing paper)	84mm
Paper thickness	0.06-0.25mm
Height of a single label paper	300mm
The maximum outer diameter of the paper roll	100mm
Storage environment	Temperature :-20 to 80°C Humidity :5 to 95%(Non-condensing)
Operating environment	Temperature :0 to 45°C Humidity :10 to 90%(Non-condensing)
Machine size	150x130x200mm

Disposal

This product must comply with the provisions of the European Directive 2012/19/EU. Products marked with the cross symbol of wheeled trash cans indicate that they need to be collected separately for garbage within the European Union. This regulation applies to products marked with this symbol and all related accessories. Products marked with this symbol must not be discarded together with ordinary household garbage but must be sent to dedicated collection points for the recycling and processing of electrical and electronic equipment.



Please note

Please note: This device complies with Part 15 of the FCC rules. Its operation needs to meet the following two conditions:

- (1) This equipment must not cause harmful interference
- (2) The device must accept all received interferences, including those that may cause unexpected operations.

Contact us

Enjoy your printing!

If you have any questions, concerns or worries about this product, please contact our support team.



Scan the QR code to visit
helpflashlabel.com



Scan this QR code with
WhatsApp Camera to add us

Website: Help.FlashLabel.com

Email: Help@FlashLabel.com

Manufacturer: Xiamen Yinxiang Future Technology Co., LTD.

FCC WARNING

This device complies with part 15 of the FCC Rules. Operation is subject to the following two conditions: (1) this device may not cause harmful interference, and (2) this device must accept any interference received, including interference that may cause undesired operation. Any changes or modifications not expressly approved by the party responsible for compliance could void the user's authority to operate the equipment.

NOTE: This equipment has been tested and found to comply with the limits for a Class B digital device, pursuant to Part 15 of the FCC Rules. These limits are designed to provide reasonable protection against harmful interference in a residential installation. This equipment generates, uses and can radiate radio frequency energy and, if not installed and used in accordance with the instructions, may cause harmful interference to radio communications. However, there is no guarantee that interference will not occur in a particular installation. If this equipment does cause harmful interference to radio or television reception, which can be determined by turning the equipment off and on, the user is encouraged to try to correct the interference by one or more of the following measures:

- Reorient or relocate the receiving antenna.
- Increase the separation between the equipment and receiver.
- Connect the equipment into an outlet on a circuit different from that to which the receiver is connected.
- Consult the dealer or an experienced radio/TV technician for help.

To maintain compliance with FCC's RF Exposure guidelines, This equipment should be installed and operated with minimum distance between 20cm the radiator your body: Use only the supplied antenna.