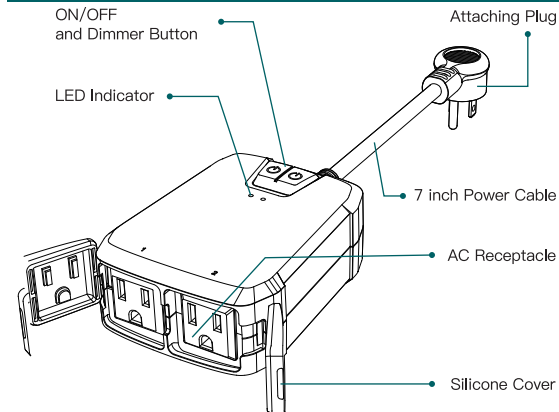


SMART DIMMER PLUG WITH 2 SOCKETS

PRODUCT OUTLINE



INDICATOR LIGHT STATUS

Light Color	Light Status	Switch Status
Red	Steady (For 3 minutes)	Low power initial state
	Blink rapidly (2 times per second)	Ready for default configuration mode / Ready for Bluetooth mode
	Blink slowly (once every 3s)	Ready for AP (Access Point) configuration mode
White	ON	Power ON
	OFF	Power OFF

ATTENTION

- Please read these instructions carefully:
- Securely connect the power interface and avoid installing the socket where it may be exposed to water. Install it in a location sheltered from rain and direct sunlight to prolong its lifespan.
 - This device works only with the 2.4GHz frequency, not 5GHz.
 - Network pairing must be completed within 3 minutes; re-pairing is required beyond this time.

- Supported bulb types: Dimmable LED/CFL-up to 150W; Incandescent -up to 300W.
- Non-dimmable bulbs cannot be adjusted. Not compatible with smart or remotely controlled lights.
- Up to 300ft WiFi range.
- Install the device where your Wi-Fi router covers for uninterrupted performance. Unstable signals may cause issues like frequent disconnections and functionality problems.

BUTTON DEFINITION

- Press the on/off button 3 times continuously, the red indicator light blinks rapidly (twice/1s) to initiate default configuration mode.
- In default configuration mode, press the on/off button 3 times continuously to initiate AP mode.
- Short press the on/off button to turn the light on/off.
- Long press the on/off button to increase the brightness of your light. Stepless dimming (1% to 100% brightness completed in 5.5s)
- Long press the on/off button to decrease the brightness of your light. Stepless dimming (100% to 1% brightness completed in 5.5s)

ADD DEVICES

- Download the TreatLife APP



Please scan the QR code or search "Treatlife" on the Apple APP Store / Google Play to download the APP.

- Registration or Log In

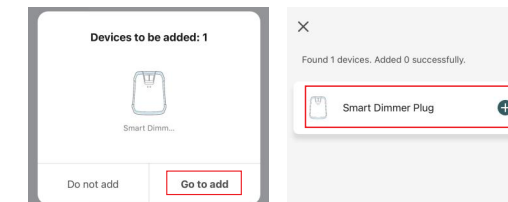
- Download the "TreatLife" Application.
- Enter the Register/Login interface; Tap "Register" to create an account by entering your Email Address to get verification code and "Set password". Choose "Log in" if you already have a TreatLife account.

- Configure the Dimmer Plug on the APP

Preparation: Ensure the dimmer plug is power on, ensure your phone has connected to the WIFI router and is able to connect to the 2.4GHz network.
Note: This dimmer plug only supports 2.4GHz network. If you have connected to 5Ghz network, please disconnect 5Ghz network firstly.

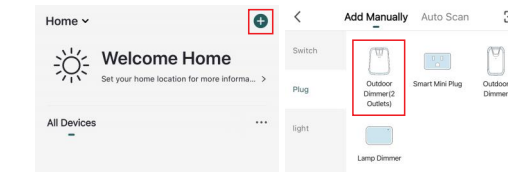
3.1 Bluetooth Mode (Automatic Mode)

- First, turn on the smartphone's Bluetooth.
- Plug in the device and ensure it is power on.
- Press the on/off button 3 times continuously, the red indicator light blinks rapidly (2 times per second).
- Open the "TreatLife" APP and it will find the Treatlife plug automatically.
- If the plug is not automatically discovered, click the "+" at the top right list and select "Auto Scan" to automatically search for the plug.
- Follow the steps in the APP to complete the pairing.



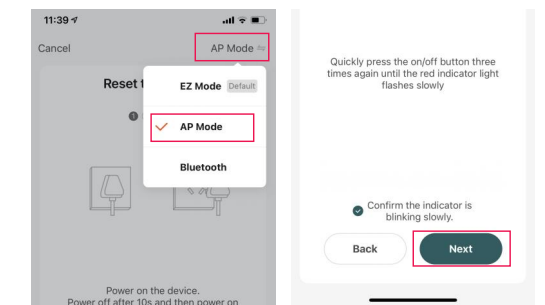
3.2 Default Configuration Mode (EZ Mode)

- Tap the icon "+" on the top right corner to add device; Choose "Dimmer Plug(WIFI)".
- Press the on/off button 3 times continuously, red indicator light blinks rapidly (2 times per second).
- Tap "Confirm the indicator is blinking rapidly"; Enter WIFI Password; Wait for the connection to complete.
- Devices have been added successfully.



3.3 AP Mode

- If you cannot configure successfully with the default mode (EZ Mode), please try to connect with AP Mode.
- Tap "AP Mode" on the top right corner.
- In AP mode, press the on/off button 3 times continuously, the red indicator light blinks slowly (once every 3 seconds)
- Tap "Confirm the indicator is blinking slowly".



- Enter Wi-Fi Password.
- Open WLAN settings; Connect with "TreatLife-xxxx".
- Back to the App and continue to add the device and wait for the connection to complete.

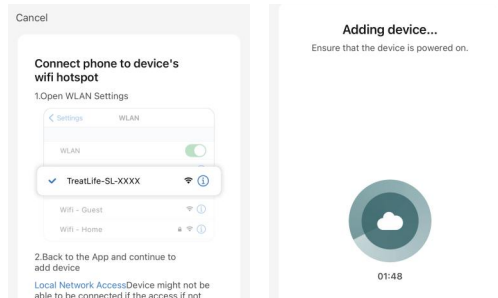
Note:

- Please complete the pairing process within 3 minutes after the dimmer plug is reset.
- Please use one of the following pairing methods if the automatic mode above did not work.



THANK YOU

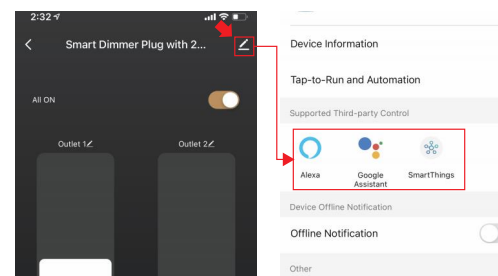
✉: Support@treatlife.tech
 Tech Support: www.treatlife.tech/pages/support



Link "TreatLife" to Alexa / Google Assistant / SmartThings

- Go to TreatLife > >More for instructions to link Alexa/ Google Assistant, SmartThings.

Note: Please log in with your TreatLife account.



Key Steps to Link the Alexa Skill

- Sign in with Amazon, tap on "Skills & Games" in the Alexa menu;

- Search for the "TreatLife", and tap "Enable" to enable the skill.
- Enter the "TreatLife" APP with your account and password, then tap "Link Now" to enable the skill.

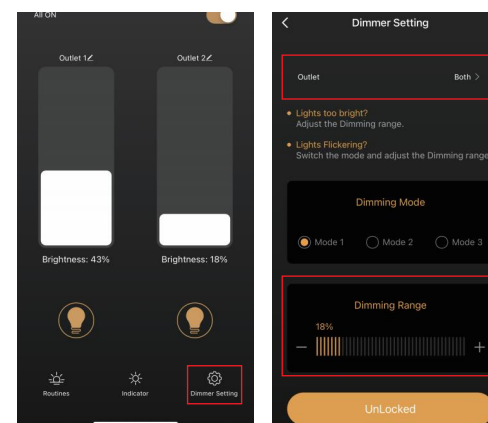
Lights are too bright though dimming to the minimum level

- Go to Dimmer Setting to adjust dimming range to desired brightness.



Lights are flickering

- Go to Dimmer Setting to switch mode and adjust dimming range until it stops flickering.



SPECIFICATION

Model	DP12
Input Voltage	120VAC/60Hz
Wireless Frequency	2.4GHz WIFI
Wireless Standard	IEEE802.11b/g/n
Support system	Android 4.1 and above or IOS 8.0 and above
Applicable load	600W INC (300W/outlet)
	300W CFL (150W/outlet)
	300W LED (150W/outlet)

FCC CAUTION

This device complies with part 15 of the FCC Rules. Operation is subject to the following two conditions:
 (1) This device may not cause harmful interference;
 (2) The device must accept any interference received, including interference that may cause undesired operation.
 Any changes or modifications not expressly approved by the party responsible for compliance could void the user's authority to operate the equipment.

Note: This equipment has been tested and found to comply with the limits for a Class B digital device, pursuant to part 15 of the FCC Rules. These limits are designed to provide reasonable protection against harmful interference in a residential installation. This equipment generates uses and can radiate radio frequency energy and, if not installed and used in accordance with the instructions, may cause harmful interference to radio communications. However, there is no guarantee that interference will not occur in a particular installation. If this equipment does cause harmful interference to radio or television reception, which can be determined by turning the equipment off and on, the user is encouraged to try to correct the interference by one or more of the following measures:

- Reorient or relocate the receiving antenna.
- Increase the separation between the equipment and receiver.
- Connect the equipment into an outlet on a circuit different from that to which the receiver is connected.
- Consult the dealer or an experienced radio/TV technician for help.

This equipment complies with FCC radiation exposure limits set forth for an uncontrolled environment. This equipment should be installed and operated with minimum distance 20cm between the radiator & your body.

ISED/C WARNING

This device complies with Innovation, Science, and Economic Development Canada's licence-exempt RSS standard(s). Operation is subject to the following two conditions:

- The device may not cause interference;
 - The device must accept any interference, including interference that may cause undesired operation of the device.
- Le présent appareil est conforme aux CNR d'Innovation, Sciences et Développement économique Canada applicables aux appareils radio exempts de licence.

L'exploitation est autorisée aux deux conditions suivantes :

- l'appareil ne doit pas produire de brouillage, et
- l'utilisateur de l'appareil doit accepter tout brouillage radioélectrique subi, même si le brouillage est susceptible d'en compromettre le fonctionnement.

The device is compliance with RF exposure guidelines, users can obtain Canadian information on RF exposure and compliance. The minimum distance from body to use the device is 20cm.

Le présent appareil est conforme Après examen de ce matériel aux conformités ou aux limites d'intensité de champ RF, les utilisateurs peuvent sur l'exposition aux radiofréquences et la conformité et compliance d'acquiescer les informations correspondantes. La distance minimale du corps à utiliser le dispositif est de 20cm.