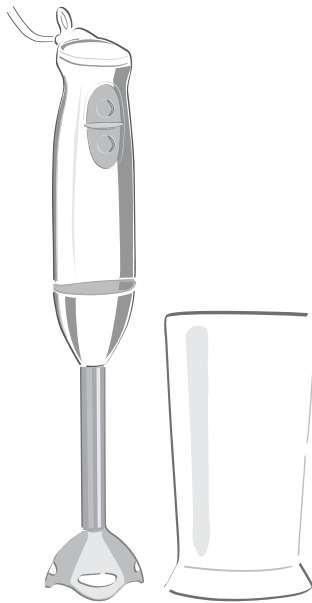


# Hand Blender

Instruction Manual

EN




**SENCOR®**

SHB 4356

Before first use, please read user's manual carefully, even if you already have an experience with using similar equipment. Use blender only in accordance with the instructions included in this manual. Save manual for future reference.



Save the cardboard box, packaging material, cushioning, prove of purchase receipt and the warranty policy at least for the duration of the warranty period. In case you need to ship the appliance back, use the original packaging.

## Important safety instructions

- This appliance is not intended for use by persons (including children) with reduced physical, sensory or mental capabilities, or lack of experience and knowledge, unless they have been given supervision or instruction concerning use of the appliance by a person responsible for their safety.  
Children should be supervised to ensure that they will not play with the appliance.
- Before connecting the power cord to the wall outlet, make sure that the voltage is compatible with the voltage shown on the label on the blender.
- Never use the blender close to water, bathroom, swimming pool or showering room. 
- Never use accessories that are not originally supplied with your product or accessories that are not designed to be used with your product.
- Do not place the blender on window ledge.
- Make sure that the power cord or the power cord plug are not in contact with water or are wet before connecting it to the wall outlet.
- Place the blender on even and flat surface.
- Do not pour water or any other liquids into the appliance.
- Always disconnect the appliance from the supply if it is left unattended and before assembling, disassembling or cleaning.
- Your blender has been designed for household use only. It is able to handle regular amounts of food.
- Do not use the blender for commercial purposes or outdoors!
- Do not use any spray bottles around the blender.
- Do not allow children to use the blender without supervision.
- If you are not using the blender, always disconnect the power cord from the wall outlet. Store away from children.
- Do not place the blender on hot surfaces such as electric or gas oven. Also do not place it close to heat producing equipment or close to an open fire.
- Do not use damaged blender or if it is not working properly. Do not use if the power cord or the power cord plug are damaged.
- If you discover damaged power cord or power cord plug, have it repaired by authorized service centre only.
- Never attempt to repair the appliance yourself. There is a risk of electrical shock. Have all repairs and adjustments done by an authorized service centre or repair shop. Any attempt to perform repair or adjustment during the warranty period will void the warranty.
- Do not place the power cord close to or on hot surfaces. Do not place on sharp objects. Do not place heavy objects on the power cord. Place the power cord in such way, so no one will step on it or trip over it. Make sure that the power cord is not hanging down from a table. Make sure it is not touching hot surfaces.
- When disconnecting the power cord from the wall outlet, do not pull it by the cord. You may damage the cable or the wall outlet. Instead, hold the power cord plug and pull it out of the wall outlet.
- Use the blender only for purposes for which it has been designed.
- Make sure that the appliance is switched off and unplugged before attaching the removable part to the motor unit or its removing.
- Do not switch on the appliance unless the removable part is properly attached to the motor unit. Do not switch on the appliance idly. Improper use could adversely affect the life of the appliance.
- Do not place your hands inside the mixing container while the device is operating.
- Do not place inside the mixing container items that you do not wish to be mixed.
- Use extreme caution when blending hot foods or hot items. Use only small portions. Hot mix may spill out and cause severe burns. If the items to be blended are very hot, allow them to cool down to a temperature at least 60 °C.
- Never use the blender for mixing or blending foods that are being cooked on an electric or gas stove.
- The operation time is 1 min. After one minute of use, let it rest for at least 20 minutes. If you are using the blender for mixing heavy or hard food items, we recommend taking a break every 20 – 30 seconds.
- **Caution!** The cutting knives are very sharp. Never attempt to touch the spinning knives.

## How to use your blender

Remove all packaging materials. Attach the lower removable part to the motor unit.

During the assembly observe the symbols  - showing the direction for locking and  showing the direction for releasing. Symbols are located on the rear side of the blender.

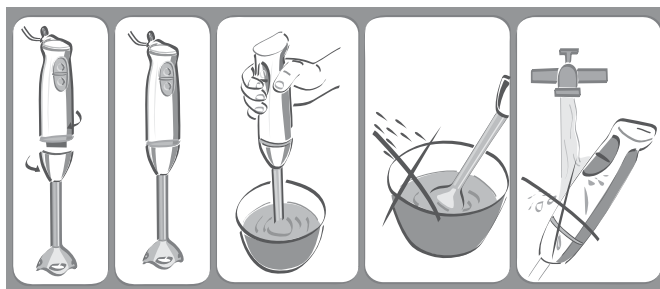
Before first use, please clean the mixing container with hot water and mild detergent. When finished rinse thoroughly under running water.

# Hand Blender

SHB 4356

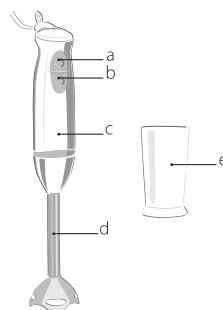
EN

During washing and cleaning, you may submerge in water only the removable part (D). Do not submerge in water or any other liquid the motor unit of the blender.



## Part description

- a - Switch (speed I)
- b - Switch (speed II)
- c - Motor unit
- d - Lower removable part
- e - Mixing container



This hand blender is suitable for the following operations:

- Mixing of cooked ingredients – e.g. preparation of mixed baby formulas
- Mixed drinks – e.g. preparation of milk cocktails, fruit drinks, sauces etc.
- Mixing of soft ingredients – e.g. preparation of bread spreading, mayonnaise etc.

## Ingredients processing guide

Ingredients	Volume in g	Speed	Mixing time
Mixed baby formulas, sauces	100 - 300	1	45 s
Mixed drinks	100 - 500	2	30 s
Fruits and vegetables	100 - 200	1	45 s
Cheese	50 - 100	1	30 s

The shown mixing times are for you reference only. The actual mixing time depends on how fine mix you want to achieve.

## Cleaning

Before cleaning, always disconnect the power cord from the wall outlet.

Clean the he blender cover (the motor unit) with soft and wet cloth. Never submerge this part in water or any other liquid.

Other parts, such as the mixing container and the removable lower part with the cutting knives may be washed in a regular dishwasher.

You may also clean the knives by submerging them in hot water with soap and by switching the blender on. In this case, you must have the blender connected to the wall outlet.

Do not use abrasive or aggressive cleaning products, such as paint thinners or benzene.

## Technical parameters:

Voltage 220 – 240 V ~ 50/60 Hz, 400 W

Electrical safety class: II (double insulation)

Noise level: 53 dB(A)

The declared noise emission level for this appliance is 53 dB(A), which represents level A of the acoustic power relative to the reference acoustic power of 1 pW.

## INSTRUCTIONS AND INFORMATION REGARDING THE DISPOSAL OF USED PACKAGING MATERIALS

Dispose of packaging material at a public waste disposal site.

### DISPOSAL OF USED ELECTRICAL AND ELECTRONIC APPLIANCES



The meaning of the symbol on the product, its accessory or packaging indicates that this product shall not be treated as household waste. Please, dispose of this product at your applicable collection point for the recycling of electrical & electronic equipment waste. Alternatively in some states of the European Union or other European states you may return your products to your local retailer when buying an equivalent new product. The correct disposal of this product will help save valuable natural resources and help in preventing the potential negative impact on the environment and human health, which could be caused as a result of improper liquidation of waste. Please ask your local authorities or the nearest waste collection centre for further details. The improper disposal of this type of waste may fall subject to national regulations for fines.

#### For business entities in the European Union

If you wish to dispose of an electrical or electronic device, request the necessary information from your seller or supplier.

#### Disposal in other countries outside the European Union

If you wish to dispose of this product, request the necessary information about the correct disposal method from local government departments or from your seller.



This product meets all the basic EU regulation requirements that relate to it.

Changes to the text, design and technical specifications may occur without prior notice and we reserve the right to make these changes.