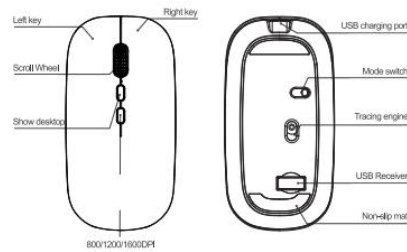


M1LBS

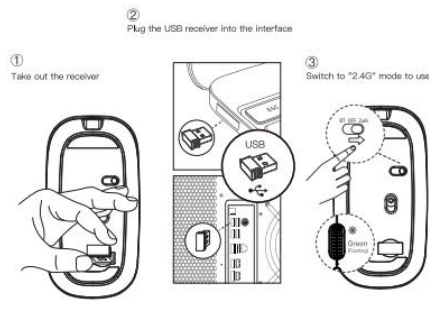
### Wireless Dual-mode Mouse

#### KEY DESCRIPTION

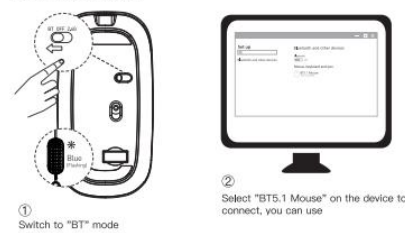


Please note: There is only one USB receiver for each device, please keep it safe.

#### 2.4G connection :

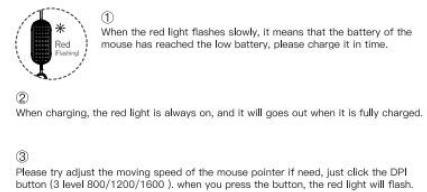


#### Bluetooth connection :



(Note: When connecting a new device, please clear the connection record of your previous device. Otherwise, the mouse will be connected to your device by auto, and it will unable to be found in your new device connection list)

#### Tips :



#### ENGLISH

#### PACKAGE CONTENTS

- Wireless Mouse
- USB Receiver
- Charging Cable
- Rechargeable Battery (included)
- User manual

#### HOW TO USE

##### Bluetooth connection :

- Step1: Push the switch on the bottom of the mouse to the side of the Bluetooth logo, the blue light in the gap of the mouse wheel flashes, that's mean it has entered Bluetooth mode.
- Step2: Turn on the Bluetooth function of your device, search and select the connection named "BT5.1 Mouse" to connect, the mouse will be successfully connected and can be used normally.

##### 2.4G connections :

- Step1: Push the switch to the side of the USB logo, the green light flashes, indicating that the mouse has entered 2.4G mode.
- Step2: Take out the receiver from the bottom of the mouse and insert it into your device. When the green light flashes quickly, it means that the mouse has been successfully connected.

#### TECHNICAL PARAMETERS

- Product Number: M1LBS
- Max acceleration: 14 inches/second
- Scroll Wheel (Y/N): Yes
- Wireless operating distance: 10 m
- Wireless technology: BT 5.1/2.4G
- Battery type: Li-polymer battery rechargeable battery
- Battery capacity: 500mAh
- Built-in battery voltage: 3.7V
- Rated operating current: <10mA
- Tracking System: Optical tracking

#### OPERATING SYSTEM

- Windows Vista, Windows 7, Windows 8, Windows 10
- Mac OS X 10.4 or later
- Chrome OS
- Linux kernel 2.6+