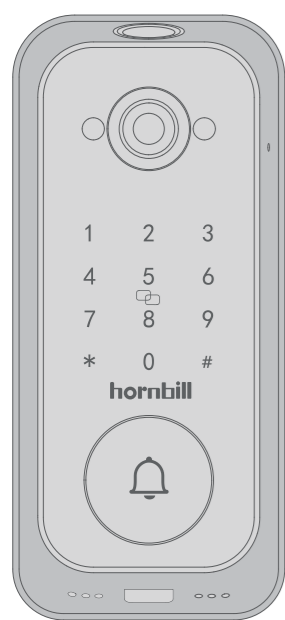


Installation and Setup Guide



Customer Service

Toll free:
1-888-352-7966

Service Hours:
Monday to Sunday: 11:00-24:00 (EST)

Email:
support@hornbilllock.com

Scan Me

WhatsApp

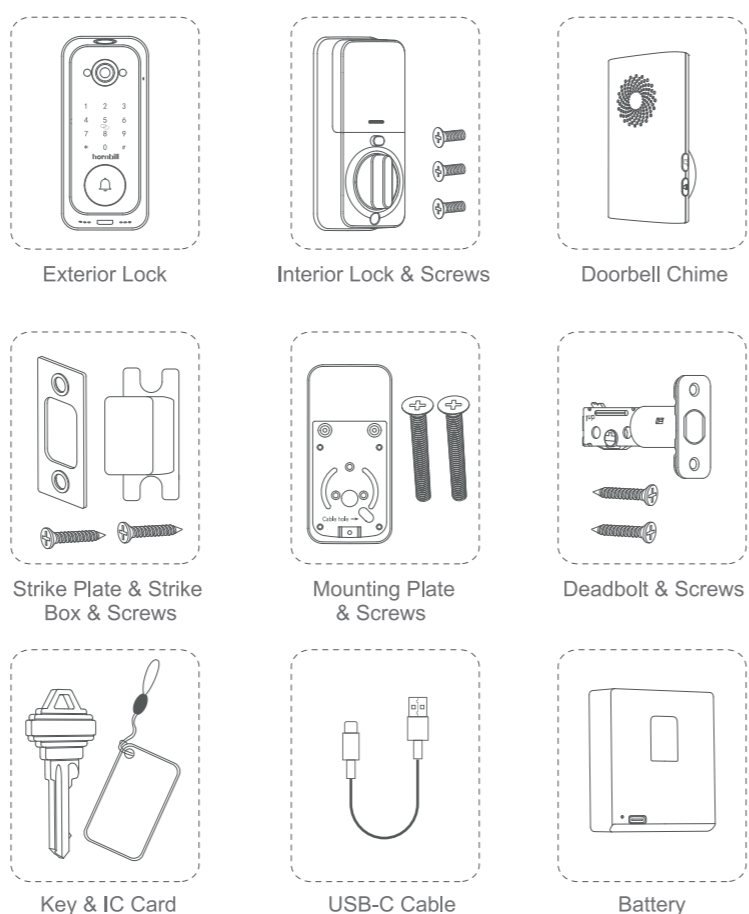
User Guide Video



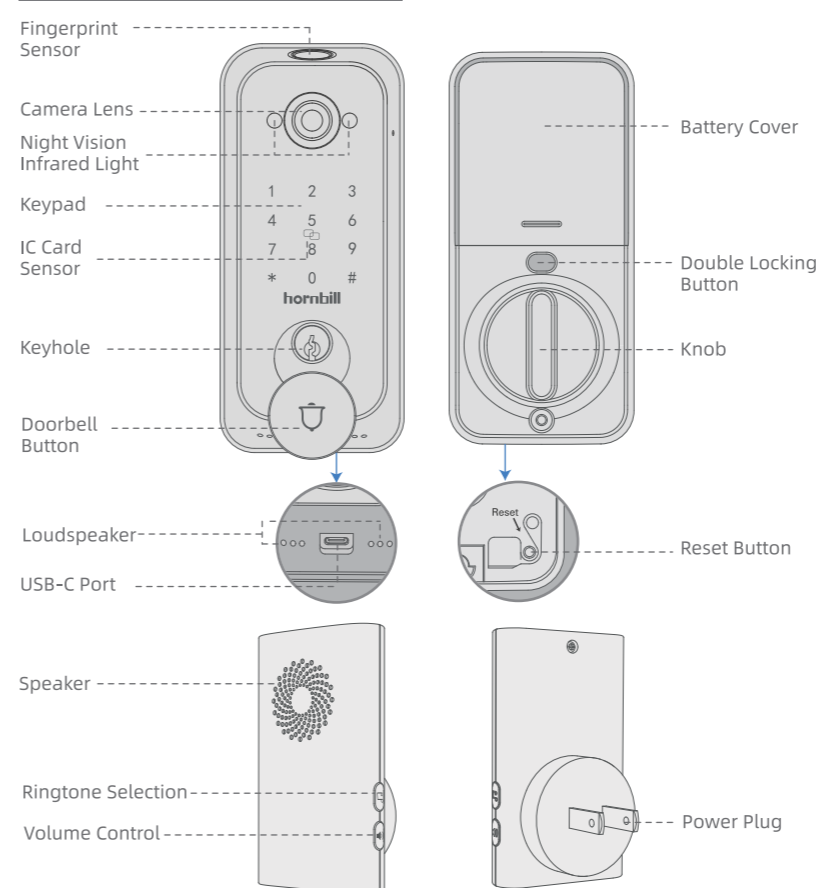
V3.0-2025

Model: T1

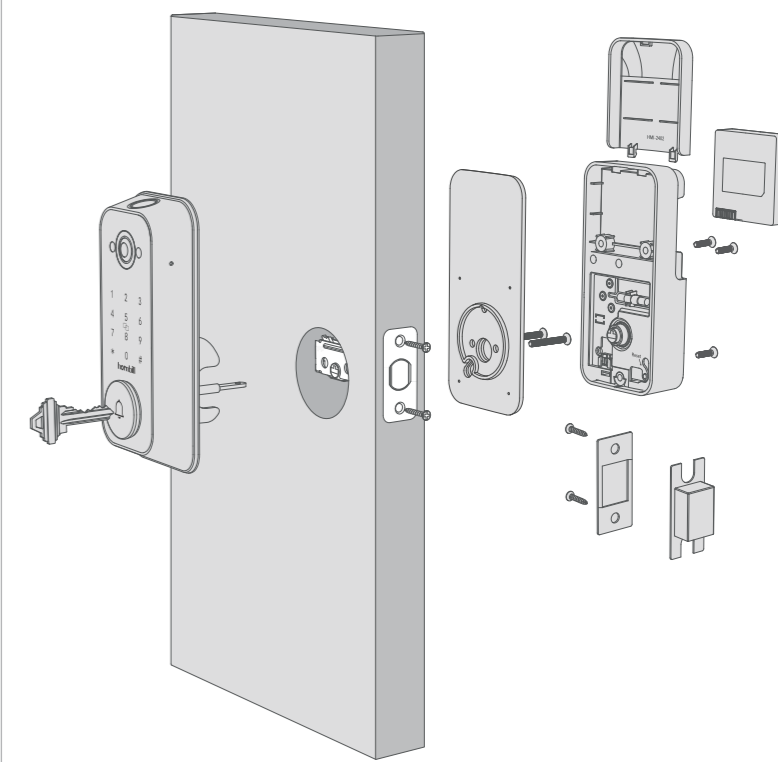
In the box



Product Overview

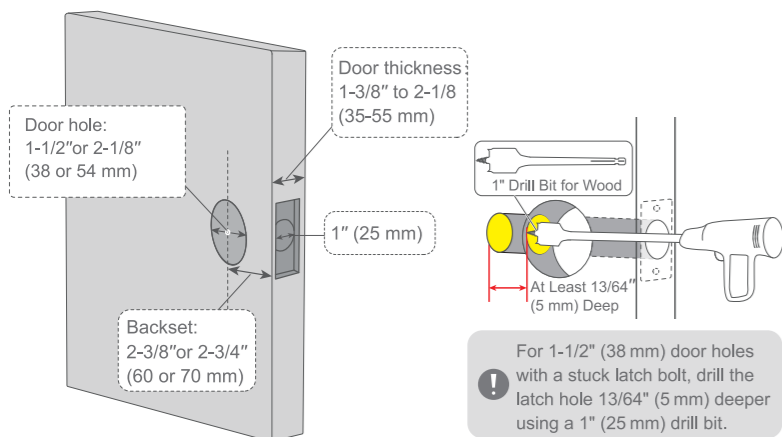


Explosive View



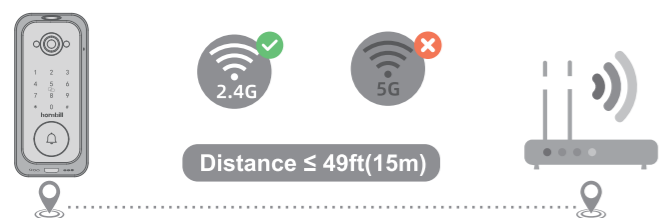
Preparations

(1) Compatible Door Dimensions

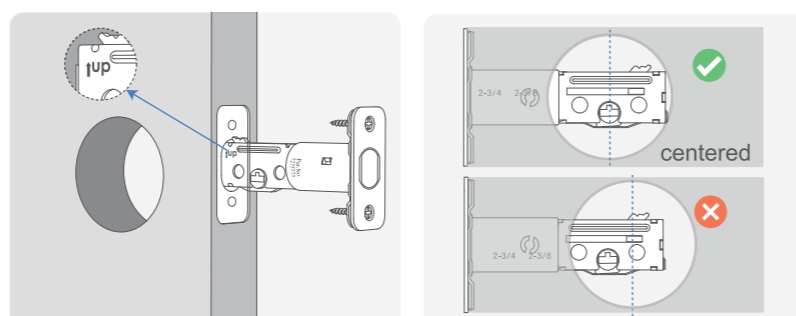


(2) Location Guide

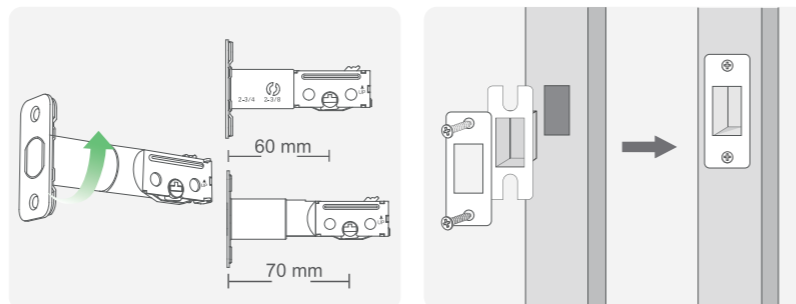
The video smart deadbolt and Wi-Fi router should be on the same floor to ensure enhanced connectivity.



Step 1. Adjust and Install the Deadbolt



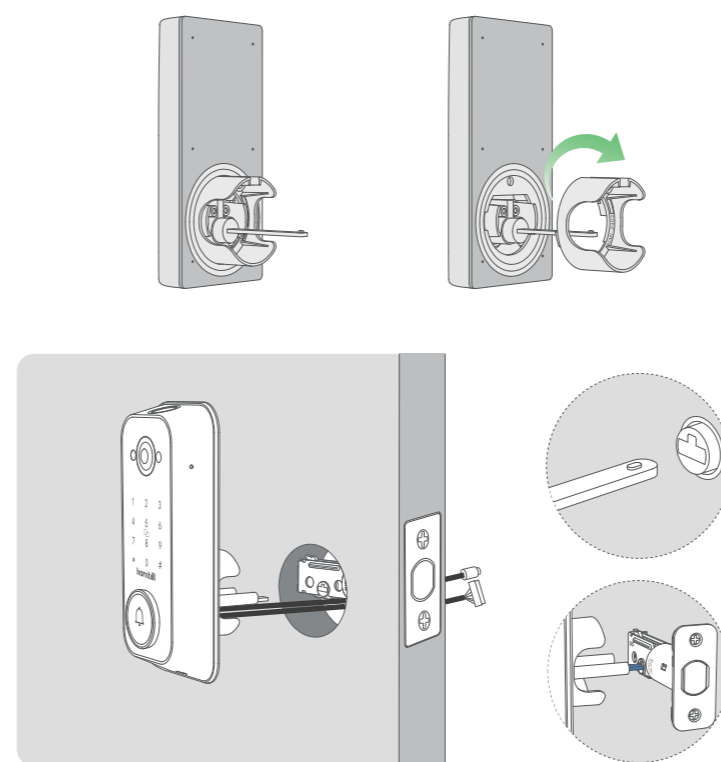
(1) Ensure the word "UP" on the deadbolt faces upward. Keep the deadbolt in the retracted position (unlocked), then insert it into the door frame.



(3) Deadbolt Adjustment (only when needed).

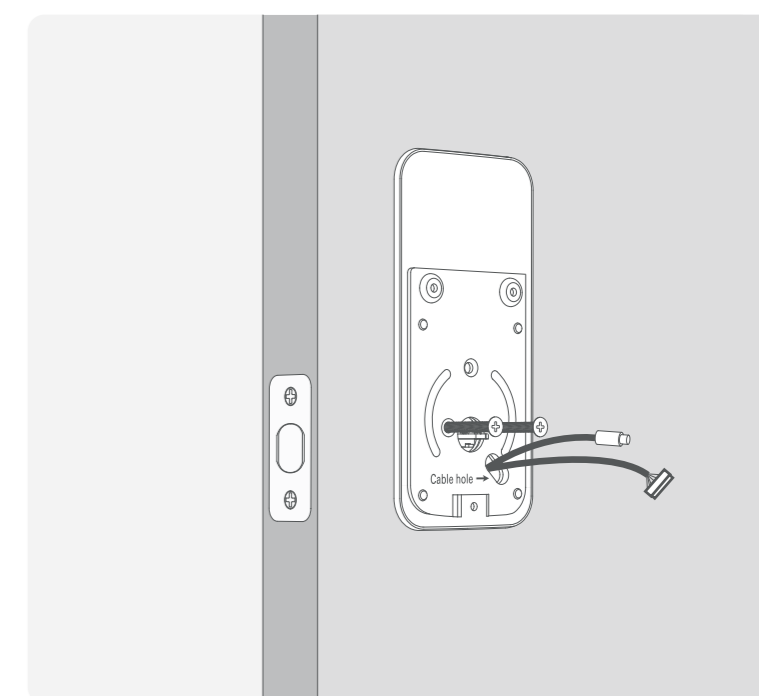
(4) Secure the deadbolt with screws. Install the strike plate.

Step 2. Install the Exterior Lock



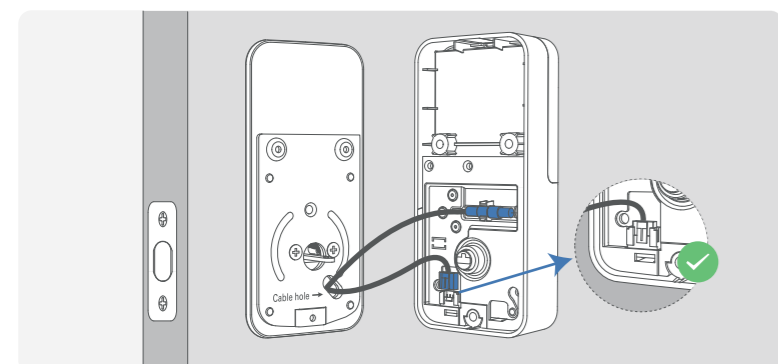
(2) Place the lock spindle with the protrusion facing up, test the deadbolt movement, and ensure the lock spindle remains horizontal while passing the IC wire and Wi-Fi cable under the deadbolt.

Step 3. Install the Mounting Plate

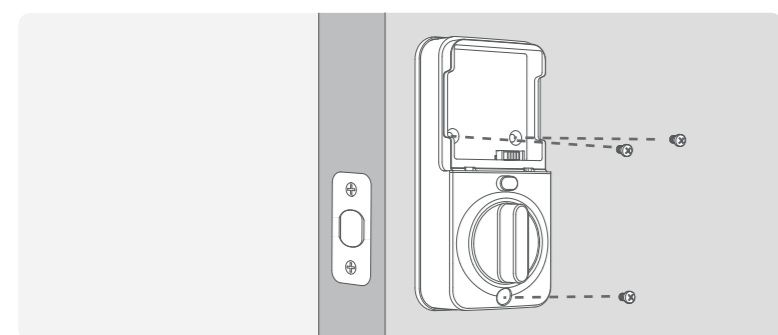


Pass the lock spindle through the central hole, feed the IC wire and Wi-Fi cable through the right-side hole, then secure the mounting plate with two screws, ensuring proper alignment and flush installation.

Step 4. Install the Interior Lock

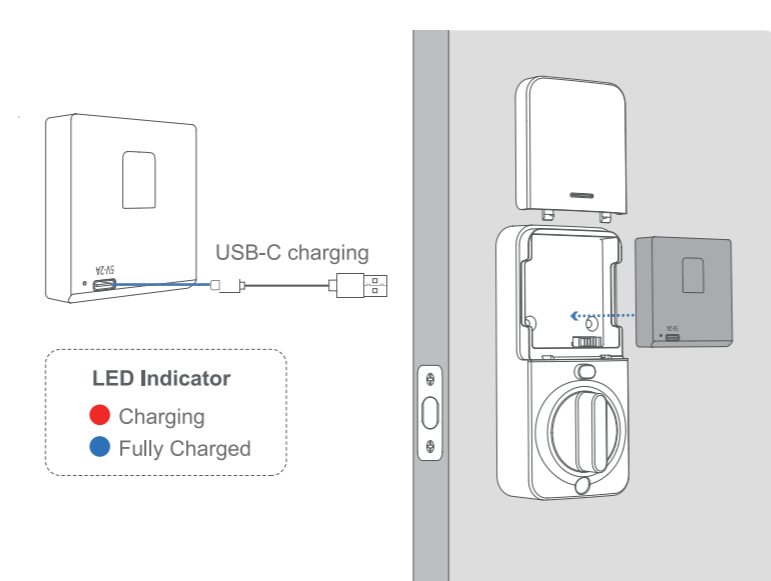


(1) Connect the IC wire and Wi-Fi cable to their respective ports, align the lock spindle with the knob groove, and insert it. Tuck excess wires into the mounting plate hole for neatness.



(2) Remove the battery cover and secure the interior lock in place with screws.

Step 5. Install the Battery

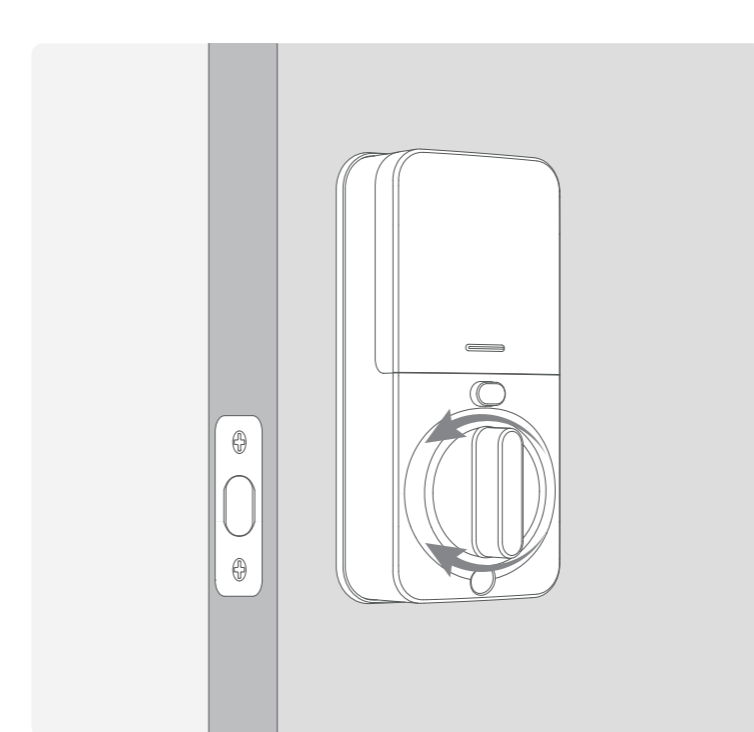


(1) To install the battery, align the groove with the port in the bottom right corner of the battery compartment.

(2) It's recommended to fully charge the battery with a 5V-2A charger (not provided) before first use. Charging takes 5-6 hours, indicated by a red light (charging) and blue light (fully charged).

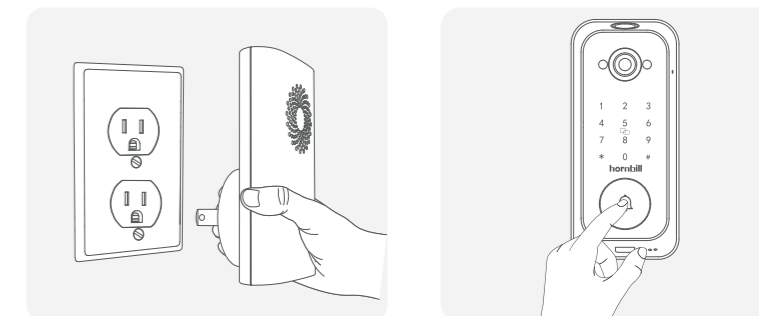
Do not charge the battery while it's installed in the lock, as it may overheat and affect performance.

Step 6. Test the Lock



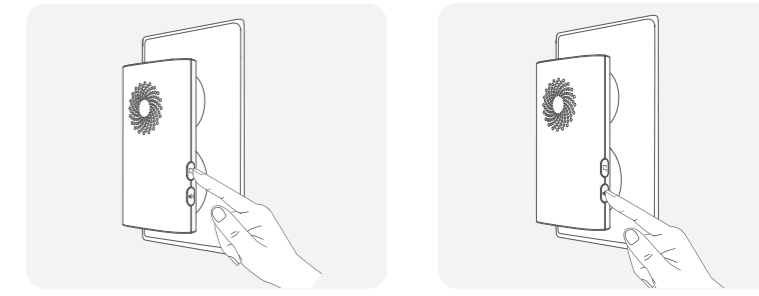
Keep the door open, turn the knob to check smooth deadbolt movement, and ensure the knob is vertical when unlocked and horizontal when locked.

Step 7. Pair the Doorbell Chime



(1) Plug in the chime and hold the [Mute] button until you hear one beep.

(2) Press the [Volume] button. Two beeps confirming success, then press any button on the chime to exit.



(3) Press the [Ringtone] button on the doorbell chime to select ringtones.

(4) Press the [Volume] button on the doorbell chime to adjust volume.

When the doorbell chime is re-powered on, the ringtone volume will reset to the default maximum level.

Using the Lock

Unlock the Door	Option 1: Light up the keypad first, then enter the password you've set and touch the #key to unlock the door. For example:123456#
	Option 2: Unlock the door with your fingerprint.
	Option 3: Swipe the IC card to unlock the door.
	Option 4: Unlock the door with the mechanical key.
	Option 5: Unlock your door with voice commands using Alexa or Google Home.
	Option 6: Unlock the door via App.

Lock the Door

- Option 1: Press the # key for 2s to lock the door.
- Option 2: Use the mechanical key.
- Option 3: Lock the door via App.
- Option 4: Enable auto-lock in the App, the door automatically locks after the set time.

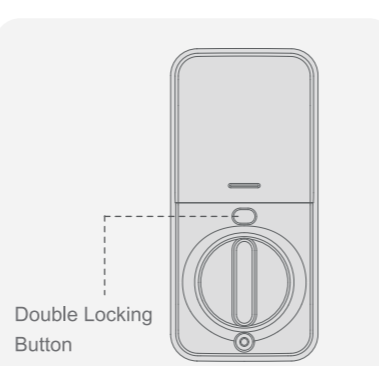
Reset the Lock

Option 1

Step 1: Light up the keypad, remove the battery for 5 secs, then reload it.

Step 2: Press the double-lock button for 10-15 secs until prompted for the initialization passcode.

Step 3: Enter 000#, you'll hear a confirmation message.



Option 2

Step 1: Remove the battery cover, take out the battery, and unscrew the interior lock.

Step 2: Reload the battery.

Step 3: Hold the reset button for 5 secs until prompted for the initialization passcode.

Step 4: Enter 000# to confirm the reset.



If option 1 or 2 doesn't work, please contact our customer service for help.

Troubleshooting

The deadbolt does not operate smoothly after installation.	Make sure the deadbolt is adjusted to the proper length and in right position. Refer to "Adjust and Install the Deadbolt".
Keypad not responding.	① Make sure the battery is properly installed and has sufficient charge. Replace it if necessary. ② Make sure the IC wire is well-connected to the port and is not damaged.
Lockset is unable to lock/unlock by the keypad.	① Make sure you enter the right code. ② Make sure the battery is charged. ③ Make sure the IC wire is well-connected to the port and is not damaged. ④ Make sure the deadbolt is installed correctly.
I cannot remove my key unless the door is in the locked position	Uninstall the lockset. Before you reinstall it, please refer to installation section above. ① Make sure the deadbolt is installed correctly. ② Do not insert any key in lock hole during installation. ③ Make sure the spindle is placed in right position.
If the above steps don't resolve your problem, please contact our customer service for help.	

Warranty and Customer Service

Product Warranty Support

At Hornbill, we are committed to ensuring your satisfaction with every product experience. From the date of purchase, your device is covered by a one-year free replacement service. To request warranty support, please contact our customer service team within one year of your purchase. After this period, while free replacements will no longer be available, we remain dedicated to assisting you through paid repair options or extended warranty recommendations tailored to your needs.

Hornbill pledges to address every request with fairness and care. Our team will evaluate each case individually to provide flexible solutions aligned with your circumstances. For warranty details, product inquiries, or personalized assistance, our customer service team is available 24/7 and will respond within 24 hours.

Thank you for choosing Hornbill. Your trust inspires us to continually improve.

Customer Service

Toll free:
1-888-352-7966

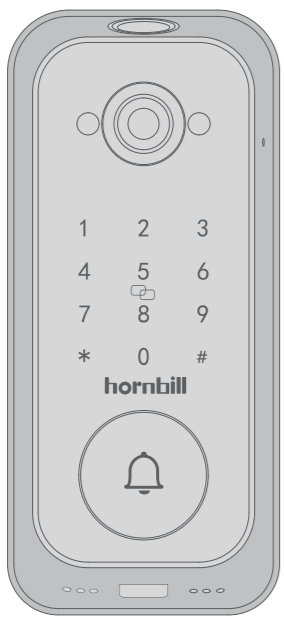
Service Hours:
Monday to Sunday: 11:00-24:00 (EST)

Email:
support@hornbilllock.com

WhatsApp



App Guide

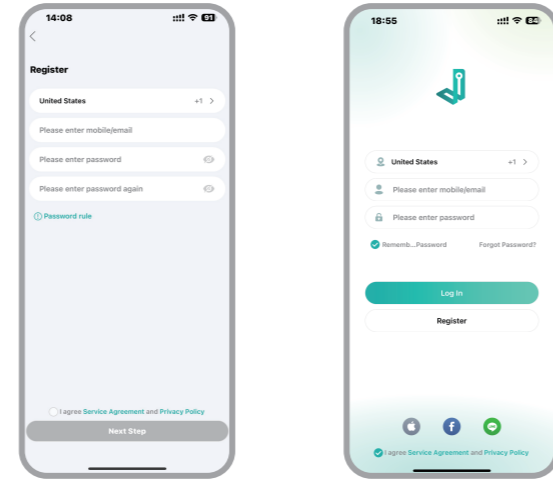
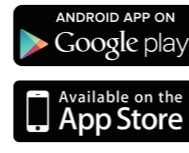


V1.0-2025

Model: T1

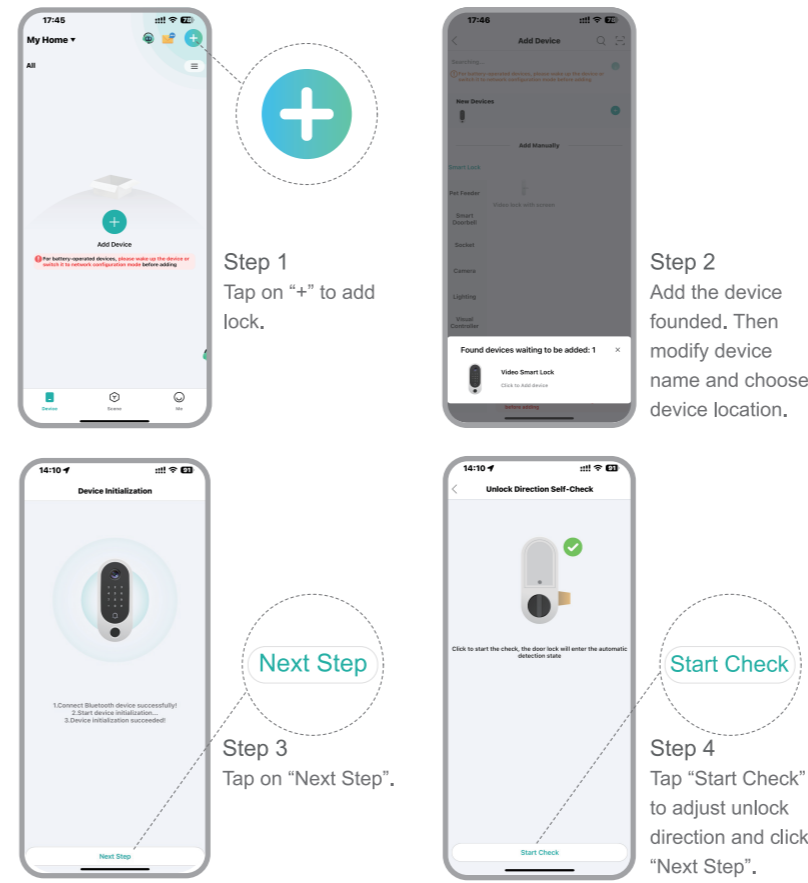
Register an Account

Search iCSee Home and download the App on Google Play/App Store or scan the QR code provided.

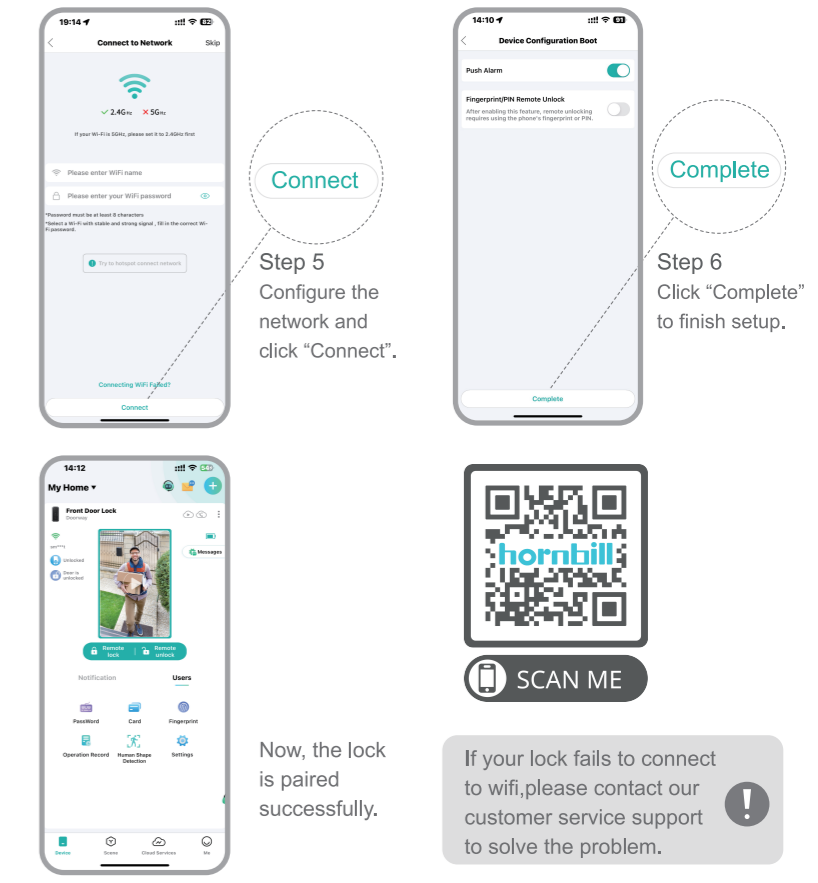


The iCSee Home app is needed to use this lock. Make sure this step is performed by the homeowner.

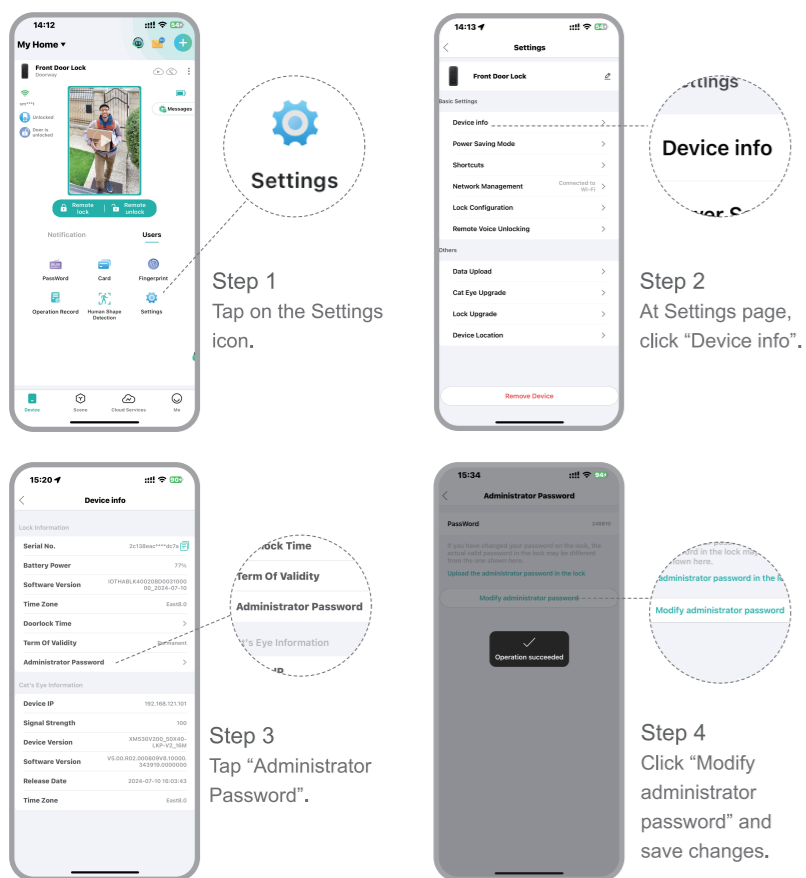
Pair the Lock



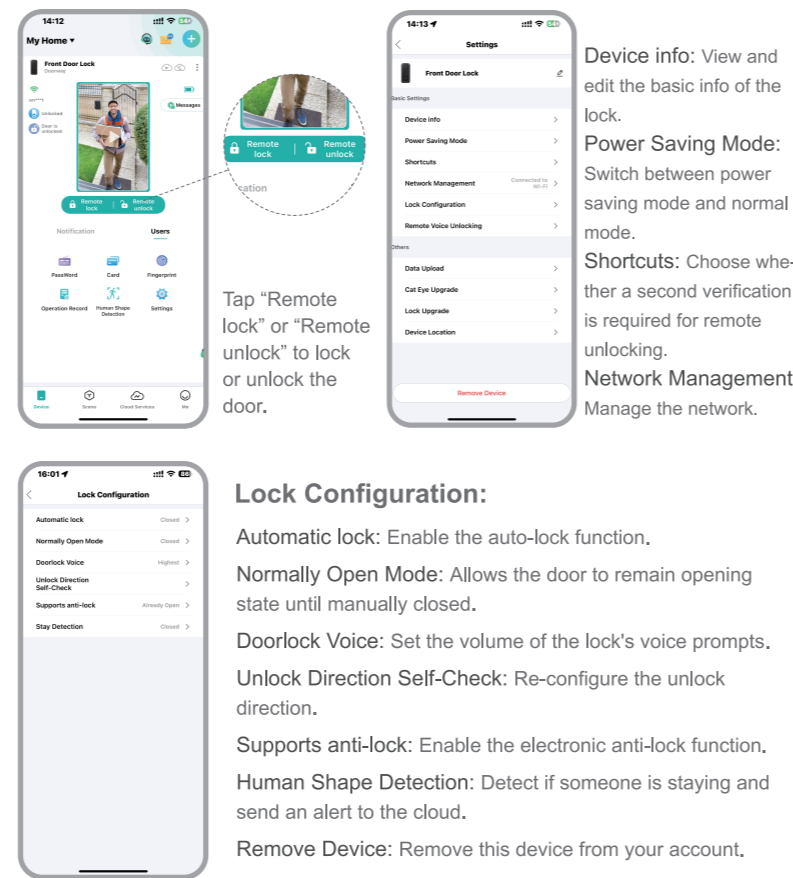
Pair the Lock



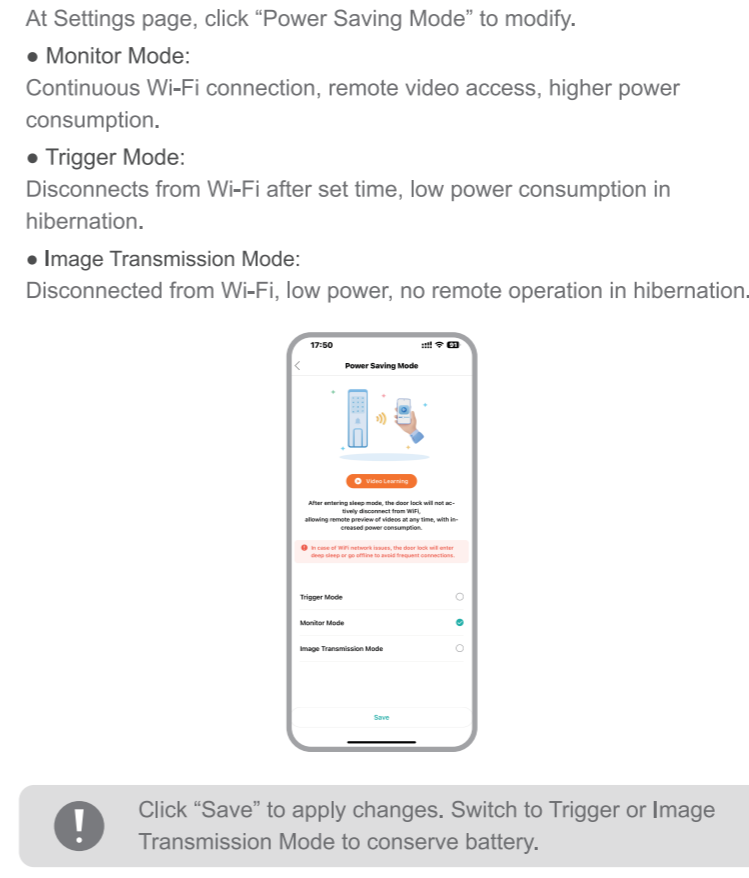
Modify the Administrator Password



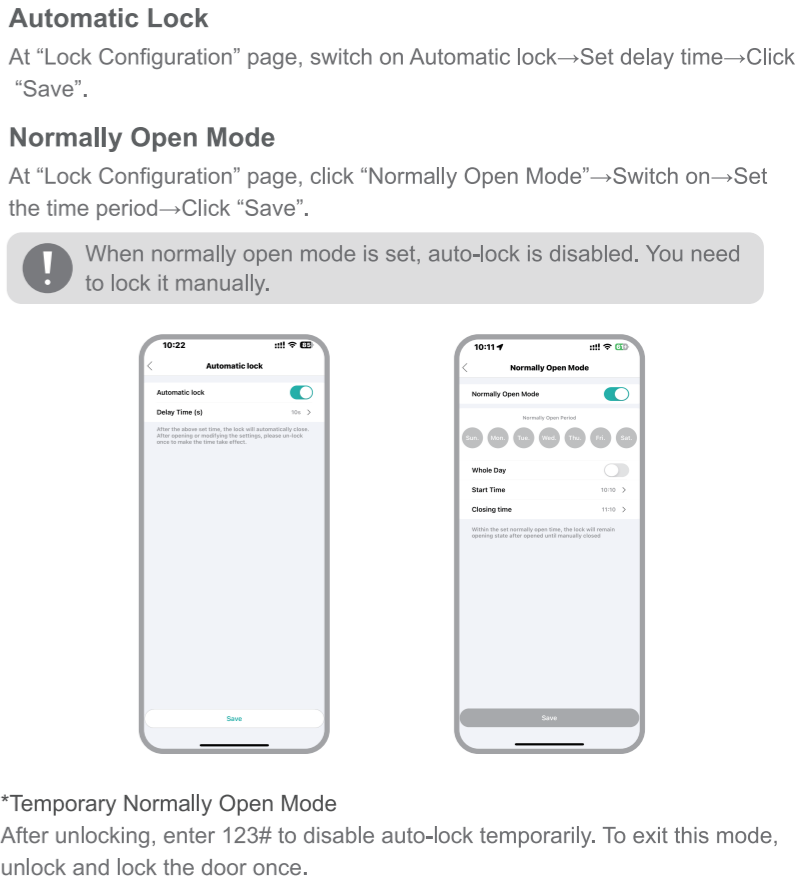
Unlock/Lock by the App & Lock Settings



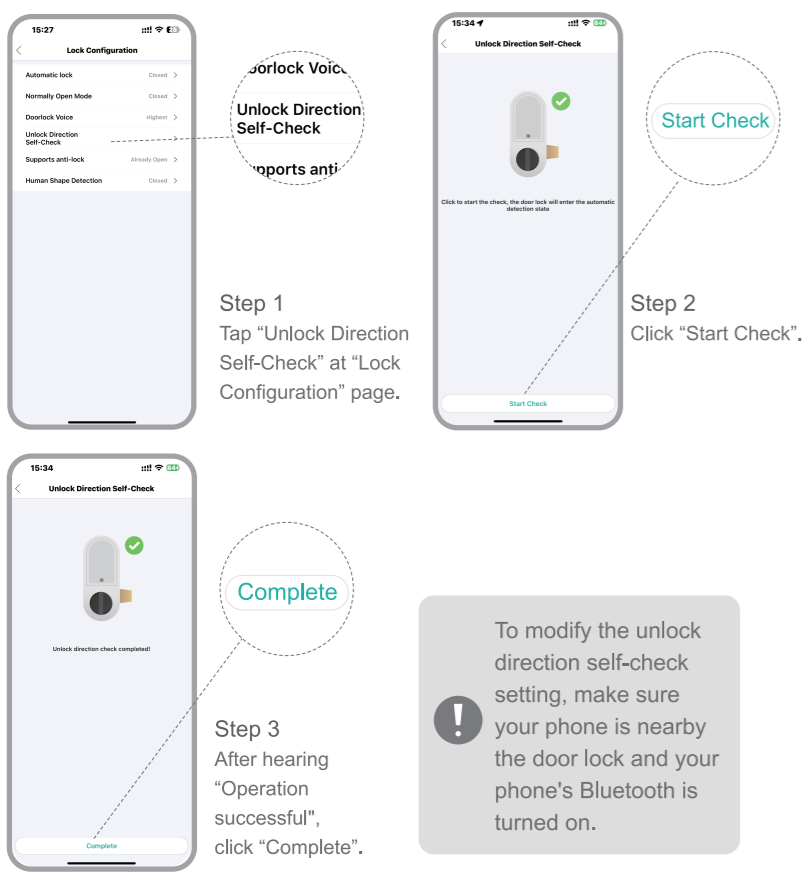
Power Saving Mode



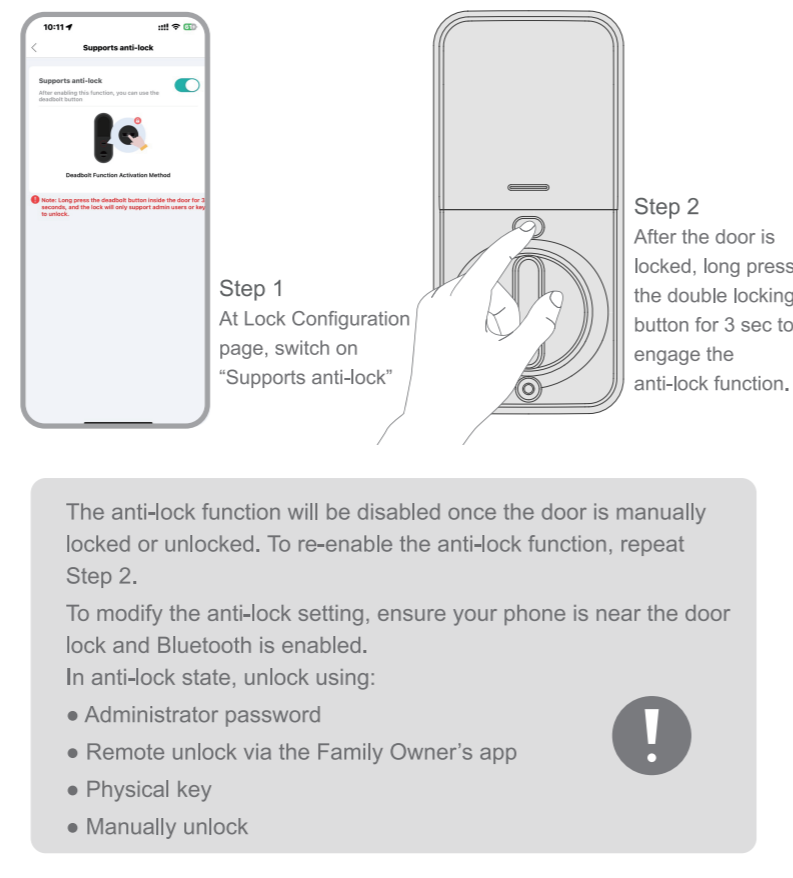
Automatic Lock & Normally Open Mode



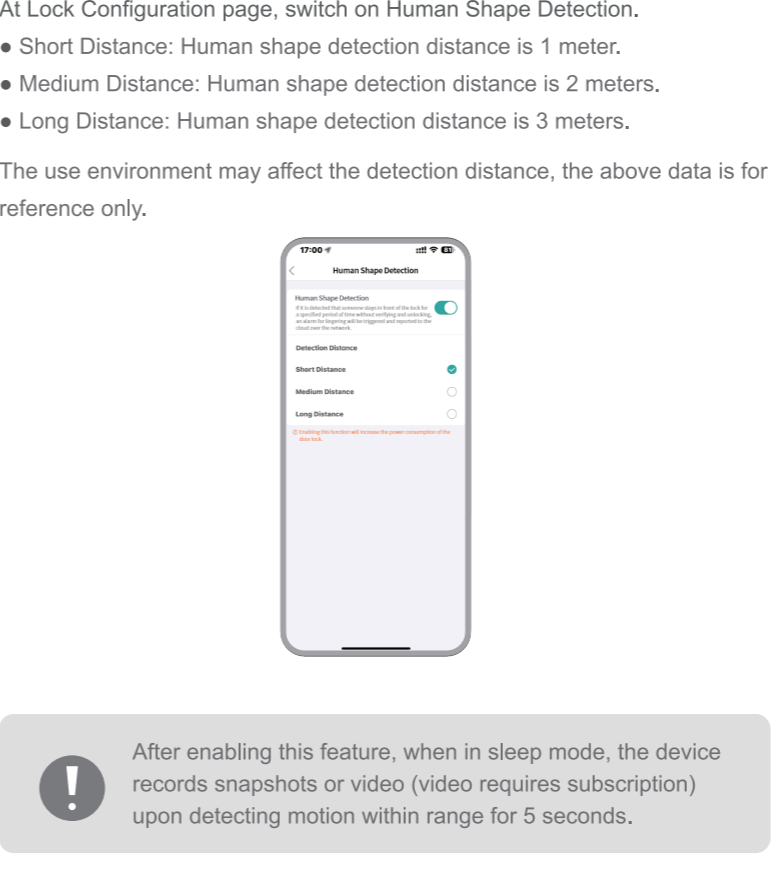
Unlock Direction Self-Check



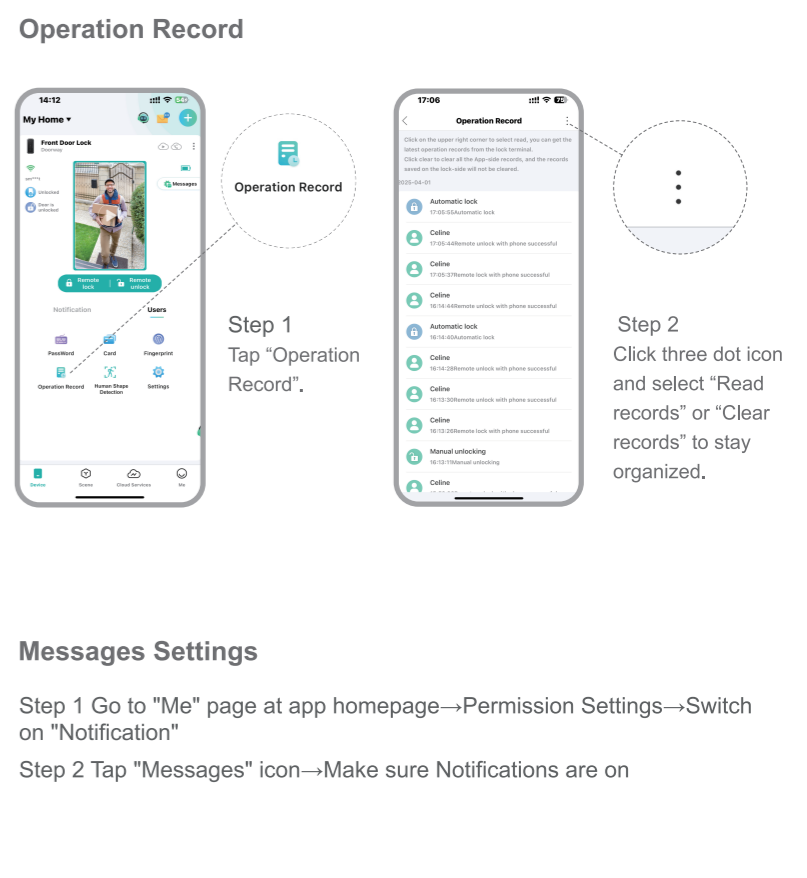
Anti-Lock Setting



Human Shape Detection



Operation Record & Messages Settings

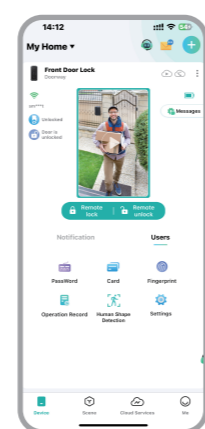


How to Share the Lock with Others

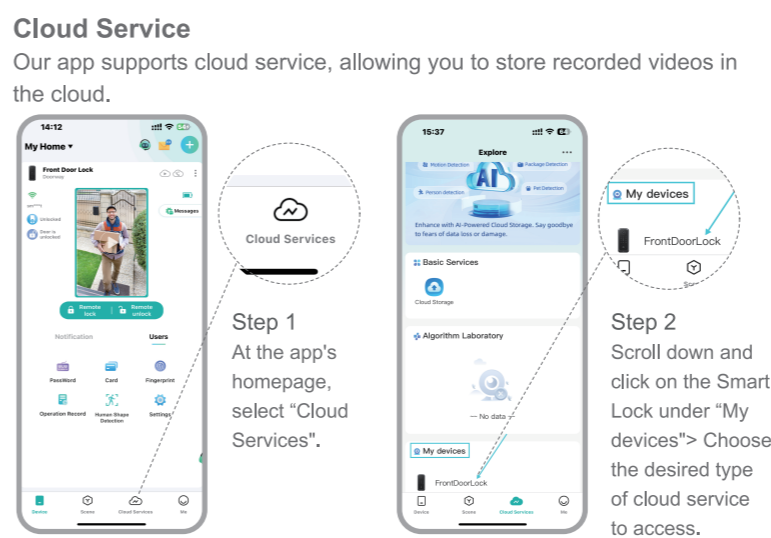
- Family Management & Sharing Family**
You can set the permissions for a specific member to join your family as either an admin or user. The invited member can have access to all devices in the family. For more detailed on how to invite, please scan the QR code.
- Device Management**
You can view the sharing status of each device. If you want to revoke a user's access to the device, simply tap on the user's account and confirm. For more detailed on how to do this, please scan the QR code.
- Sharing Device**
You can share a specific device to a member as either an admin or user. The member can only have access to this device. For more detailed on how to invite, please scan the QR code.

Set Passwords/IC Cards/Fingerprints

Click Passwords / Card / Fingerprint icon at homepage and follow the instructions on App to finish settings. For detailed instructions, please scan the QR code.



Cloud Service & Smart Home Integration



Smart Home Integration
Our locks work with both Amazon Alexa and Google Assistant.



With more to come in the future. For detailed instructions on how to enable the Amazon Alexa and Google Assistant, please scan the QR Code for details.



FAQs

- | | |
|--|--|
| Why can't the app control the lock when it's anti-locked? | Only administrators can control the lock through the app when it's anti-locked. |
| Can the door lock voice be muted or turned down? | Launch the app → At "Settings" page, tap "Doorlock Voice" → Turn it off or select lock volume. |
| I shared the lock with my friends, but he/she couldn't use the code I send, why? | Make sure the recipient's account location is the same as the administrator's. |
| How can I cancel anti locking? | ① Short press the double locking button.
② Turn the manual knob.
③ Unlock with the administrator password.
④ Unlock remotely through the Family Owner's app.
⑤ Unlock with the physical key. |
| How can I check the unlock direction? | Launch the app → At "Settings" page, tap "Unlock Direction Self-Check" → Click "Start Check". |
| Scan the QR code to explore our constantly updating FAQ for T1 Video Smart Deadbolt. | |

