

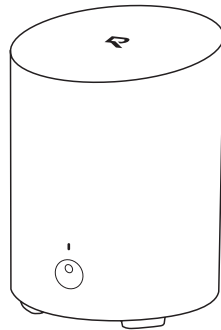
REOLINK INNOVATION LIMITED  
FLAT/RM 705 7/F FA YUEN COMMERCIAL BUILDING 75-77 FA YUEN STREET  
MONG KOK KL HONG KONG

# Reolink

Item No. : Hub 1 Lite

## Reolink Home Hub Mini

Operational Instructions



**PAP 22**  
Raccolta Carta



**FR**  
Cet appareil,  
ses accessoires  
et cordons  
se recyclent

À DÉPOSER  
EN MAGASIN



OU

À DÉPOSER  
EN DÉCHÈTERIE



Points de collecte sur [www.quefairedemesdechets.fr](http://www.quefairedemesdechets.fr)  
Privilégiez la réparation ou le don de votre appareil !

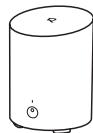
58.03.010.0083

  @ReolinkTech <https://reolink.com>

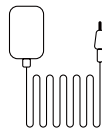
## Content

01	What's in the Box	2
02	Device Overview	3
03	Connection Diagram	4
04	Access Home Hub via Smartphone	5
05	Connect Devices to Home Hub	7
06	Specifications	8
07	Important Safety Instructions	9
08	Legal Disclaimer	10
09	Notification of Compliance	12

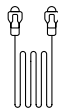
## 01 What's in the Box



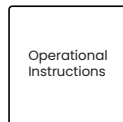
Home Hub



Power Adapter

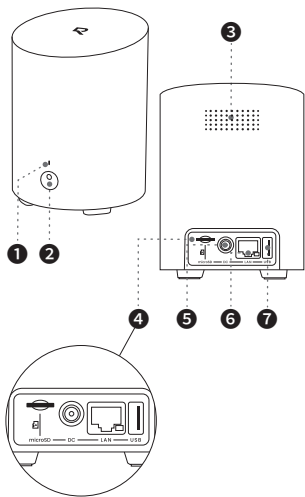


1m Ethernet  
Cable



Operational  
Instructions

## 02 Device Overview



- 1 Indicator Light
- 2 Button\*
- 3 Cooling Holes
- 4 microSD Card Slot
- 5 DC Input Port
- 6 LAN Port
- 7 USB Port

Reset Note: Power off the device to reset it. While powered off, press and hold the device button, then reconnect the power until you hear a beep.

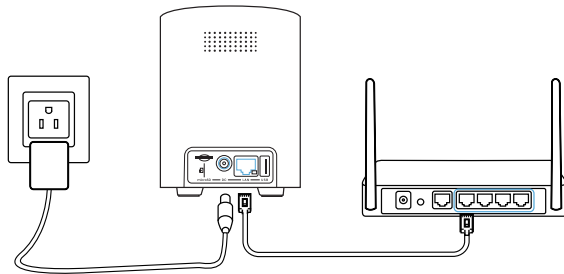
## 03 Connection Diagram

### Step 1:

Plug in the Home Hub and connect it to your home router using the Ethernet cable provided.

### Step 2:

Connect your phone to the same router that the Home Hub is connected to.



## 04 Access Home Hub via Smartphone

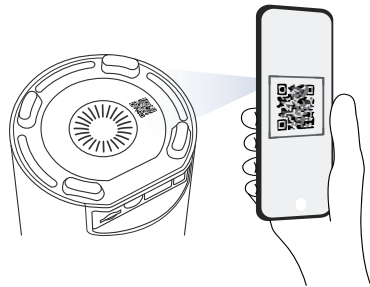
### Step 1:

Scan to download the Reolink App from the App Store or Google Play store



### Step 2:

Launch the App, click " + " at the top right, and scan the QR code on your Home Hub to add it.



### Step 3:

Once the setup is complete, the LED indicator light will turn blue.

## 05 Connect Devices to Home Hub

There are two ways to add Reolink devices to your Home Hub:

1. If your device is already set up, click the “+” button at the top right and choose to “add from device list” or “add from LAN.”
2. If your device is not set up yet, click the “+” button at the top right and choose to “scan UID code.”

\*You can also directly add devices to the Hub while adding devices to the app.



**Attention:** When inserting the SD card into the slot, make sure the side with the numbers is facing up and push it gently inward until it clicks into place.

## 06 Specifications

Operating Temperature:  $-10^{\circ}\text{C}\sim+45^{\circ}\text{C}$  (14°F to 113°F)

Size:  $\phi 94*127.8$  mm

Weight: 220 g

For more specifications, please visit <https://reolink.com/>.

## 07 Important Safety Instructions

Please read the instructions carefully before using the device.

1. Replace only with the same or equivalent type of accessories recommended by Reolink.
2. Do not use the device in an environment that exceeds the recommended temperature range.
3. Do not use the device in an environment that exceeds the recommended humidity range.
4. Do not attempt to disassemble, repair, or alter the device by yourself.
5. Always follow the local safety laws and regulations when using the device.
6. The device contains (or comes with) small components, small plastic elements, and other small parts that may cause choking hazards. Keep the device and its accessories out of reach of children. Consult a physician immediately if small parts are swallowed.
7. The device contains (or comes with) cables or cords that may cause strangulation hazards. Keep the device and its accessories out of reach of children.

## 08 Legal Disclaimer

To the maximum extent permitted by applicable law, this document and the product described, with its hardware, software, firmware, and services, are delivered on an "as-is" and "as-available" basis, with all faults and without warranty of any kind. Reolink disclaims all warranties, express or implied, including but not limited to, warranties of merchantability, satisfactory quality, fitness for a particular purpose, accuracy, and non-infringement of third-party rights. In no event will Reolink, its directors, officers, employees, or agents be liable to you for any special, consequential, incidental or indirect damages, including but not limited to damages for loss of business profits, business interruption, or loss of data or documentation, in connection with the use of this product, even if Reolink has been advised of the possibility of such damages.

To the extent permitted by applicable law, your use of the Reolink products and services is at your sole risk and

you assume all risks associated with internet access. Reolink does not take any responsibilities for abnormal operation, privacy leakage or other damages resulting from cyber attacks, hacker attacks, virus inspections, or other internet security risks. However, Reolink will provide timely technical support if required.

The laws and regulations related to this product vary by jurisdiction. Please check all relevant laws and regulations in your jurisdiction before using this product to ensure that your use conforms to the applicable law and regulation. During the use of the product, you must comply with relevant local laws and regulations. Reolink is not responsible for any illegal or improper use and its consequences. Reolink is not liable in the event that this product is used with illegitimate purposes, such as third-party rights infringement, medical treatment, safety equipment, or other situations where the product failure could lead to death or personal injury, or for weapons of mass destruction, chemical and biological weapons, nuclear explosion, and any unsafe nuclear energy uses or anti-humanity purposes. In the event of any conflicts

between this manual and the applicable law, the latter prevails.

## 09 Notification of Compliance

### FCC Statement

This device complies with Part 15 of the FCC Rules. Operation is subject to the following two conditions:

- (1) This device may not cause harmful interference, and
- (2) This device must accept any interference received, including interference that may cause undesired operation. Changes or modifications not expressly approved by the party responsible for compliance could void the user's authority to operate the equipment. This equipment has been tested and found to comply with the limits for a Class B digital device, pursuant to Part 15 of the FCC Rules. These limits are designed to provide reasonable protection against harmful

interference in a residential installation. This equipment generates uses and can radiate radio frequency energy and, if not installed and used in accordance with the instructions, may cause harmful interference to radio communications. However, there is no guarantee that interference will not occur in a particular installation. If this equipment does cause harmful interference to radio or television reception, which can be determined by turning the equipment off and on, the user is encouraged to try to correct the interference by one or more of the following measures:

- Reorient or relocate the receiving antenna.
- Increase the separation between the equipment and receiver.
- Connect the equipment into an outlet on a circuit different from that to which the receiver is connected.
- Consult the dealer or an experienced radio/TV technician for help.

### **FCC Radiation Exposure statement**

This equipment complies with FCC radiation exposure limits set forth for an uncontrolled environment. This equipment should be installed and operated with minimum distance 20cm between the radiator & your body.

### **ISED Statement**

This device complies with Industry Canada licence-exempt RSS standard(s). Operation is subject to the following two conditions:

(1) this device may not cause interference, and (2) this device must accept any interference, including interference that may cause undesired operation of the device."

This equipment should be installed and operated with a minimum distance of 20 cm between the radiator and your body.

Le présent appareil est conforme aux CNR d'Industrie Canada applicables aux appareils radio exempts de

licence. L'exploitation est autorisée aux deux conditions suivantes :

- (1) l'appareil ne doit pas produire de brouillage, et
- (2) l'utilisateur de l'appareil doit accepter tout brouillage radioélectrique subi, même si le brouillage est susceptible d'en compromettre le fonctionnement."

Cet équipement doit être installé et utilisé avec une distance minimale de 20 cm entre le radiateur et votre corps.

**MODIFICATION:** Any changes or modifications not expressly approved by the grantee of this device could void the user's authority to operate the device.

Toute modification non approuvée explicitement par le fournisseur de licence de l'appareil peut entraîner l'annulation du droit de l'utilisateur à utiliser l'appareil.

This Class B digital apparatus complies with Canadian ICES-003.

Cet appareil numérique de la classe B est conforme à la norme NMB-003 du Canada.

Operation of 5150-5350 MHz is restricted to indoor use only.

Le fonctionnement de 5150-5350 MHz est limité à une utilisation en intérieur uniquement.

Hereby, REOLINK INNOVATION LIMITED declares that this device is in compliance with Cyber Security (Security Standards for Smart Devices) Rules 2025. For the Statement of Compliance, visit the Web site <https://reolink.com/product-compliance/>

### Limited Warranty

This product comes with a 2-year limited warranty that is valid only if purchased from Reolink Official Store or a Reolink authorized reseller. Learn more: <https://reolink.com/warranty-and-return/>.

**NOTE:** We hope that you enjoy the new purchase. But if you are not satisfied with the product and plan to return, we strongly suggest that you reset the camera

to factory default settings and take out the inserted SD card before returning.

### **Terms and Privacy**

Use of the product is subject to your agreement to the Terms of Service and Privacy Policy at [reolink.com](https://reolink.com)

### **Terms of Service**

By using the Product Software that is embedded on the Reolink product, you agree to the terms&conditions between you and Reolink. Learn more: <https://reolink.com/eula/>.

### **Technical Support**

If you need any technical help, please visit our official support site and contact our support team before returning the products, <https://support.reolink.com>.

### **Trademarks Acknowledgement**

“Reolink” and other Reolink’s trademarks and logos are the properties of Reolink. Other trademarks and logos mentioned are the properties of their respective owners.